



visaaya

Vastu+ premium living



RERA WEBSITE:
WWW.RERA.WB.GOV.IN

RERA No.:
WBRERA/P/KOL/2024/001349

WELCOME TO
THE WORLD OF

Visaaya

IN SANSKRIT AND HINDI, THE WORD 'VISAAYA' CAN REPRESENT 'ABODE,' 'DOMINION' & THE SYMBOLIC NAME FOR '5.' THE 5 ELEMENTS – FIRE, AIR, EARTH, WATER & SPACE – ARE CRUCIAL IN DETERMINING VASTU FOR ANY HOME. OUR PROJECT IS HIGHLY VASTU COMPLIANT, MAKING IT THE PERFECTLY HARMONIOUS HOME TO RESIDE IN.

So get ready to experience global living rooted in local sensibilities, only at Visaaya.



ENJOY THE
TRADITION OF
vastu +
living
AT A MODERN
ADDRESS

PROPER VASTU ATTRACTS POSITIVE ENERGY FOR
PERSONAL & PROFESSIONAL SUCCESS.

VASTU SHASTRA LINKS EVERYTHING IN THE
UNIVERSE WITH THE 5 ELEMENTS – FIRE FOR SOLAR
ENERGY, AIR FOR WIND ENERGY, WATER FOR
GRAVITATIONAL ENERGY, EARTH FOR GEOMAGNETIC
ENERGY & SPACE FOR COSMIC RADIATION.

VASTU-COMPLIANT HOMES HARMONISE THESE
ELEMENTS, SPREADING POSITIVITY AND ENHANCING
VARIOUS ASPECTS OF LIFE.

ENJOY
CONVENIENCE
WITH A

fire+ home

FIRE IS ASSOCIATED WITH
STRENGTH, ACTIVITY & LIFE
FORCE. A FIRE+ HOME
PLACES A KITCHEN IN THE
RIGHT 'AGNEYA' DIRECTION.

ITS CORRECT ALIGNMENT
ALSO ALLOWS ABUNDANT
SUNLIGHT TO FILTER INTO
OUR PREMISES, RADIATING
POSITIVE ENERGY.

RENEWED
REJUVENATION
WITH AN

earth + home

EARTH'S GRAVITATIONAL &
MAGNETIC QUALITIES INFLUENCE
FERTILITY & GROUNDEDNESS.

AN EARTH+ HOME ENSURES
STABILITY & BALANCE. PLANTING
TREES & KEEPING EARTHEN
ACCESSORIES IN THE RIGHT
DIRECTION CREATES A
HARMONIOUS SPACE.

WELCOME
ABUNDANCE WITH A

space+ home

THE SKY IS KNOWN AS THE
'BRAHMASTHAN', AN OPEN
SPACE. IN OUR HOMES, THIS
CENTRAL SPACE IS THE HEART
OF THE HOME.

A SPACE+ HOME IS BEREFT
OF OBSTACLES, AIDING THE
UNISON OF ALL 5 ELEMENTS,
TO INVITE PROSPERITY INTO
OUR LIVES.





HARNESS
FLUIDITY WITH A

water⁺ home

THE FLOW OF WATER
REPRESENTS CONSCIOUSNESS,
PURITY & MOVEMENT. FLOWING
WATER ENCOURAGES ACTIVITY,
WHILE STILL WATER AIDS FOCUS.

A WATER⁺ HOME STRATEGICALLY
PLACES WATER ELEMENTS LIKE
PONDS OR AQUARIUMS TO
HARNESS POSITIVE VIBRATIONS.

EXPERIENCE
COMFORT
WITH AN

air+ home

AIR AS AN ELEMENT AFFECTS ALL OUR
SENSES VIA TEMPERATURE, HUMIDITY,
FLOW & PRESSURE.

AN AIR+ HOME ENSURES PROPER
VENTILATION VIA THE RIGHT
PLACEMENT OF WINDOWS, DOORS &
BALCONIES.





visaaya

UPGRADE TO A LUXURY+ LIFESTYLE AT VISAAYA

REGAL, SPACIOUS & PREMIUM,
VISAAYA BRINGS YOU LUXURIOUS
LIVING WITH VASTU-COMPLIANT
HOMES AT A PRIME LOCATION IN
NORTH KOLKATA. ADD TO THAT A
HOST OF INCREDIBLE AMENITIES FOR
A LAVISH LIVING.

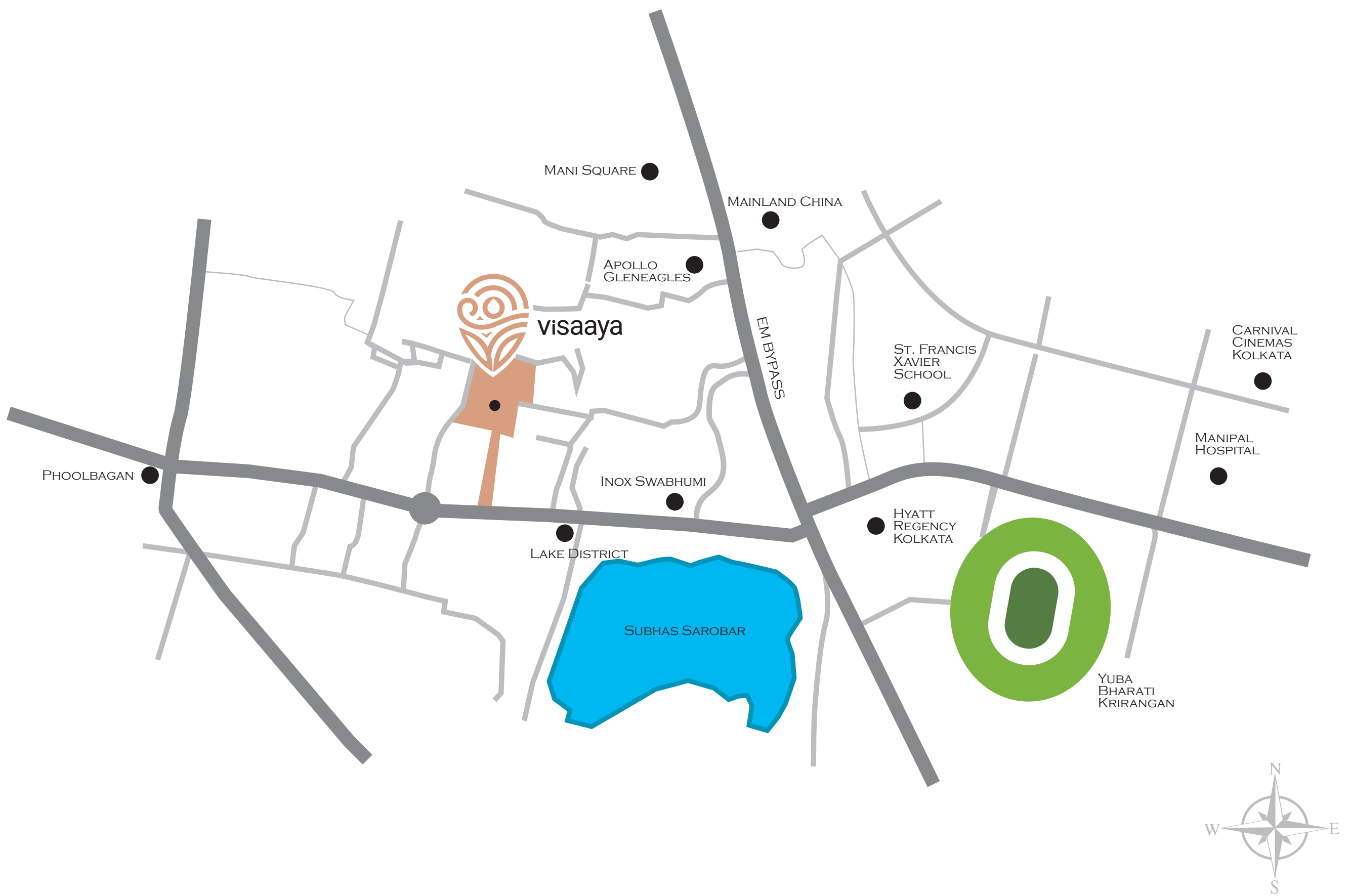
COME, EMBRACE A HIGH-FLYING
LIFESTYLE, WITH THE CHOICEST
OFFERINGS RIGHT AT HOME.



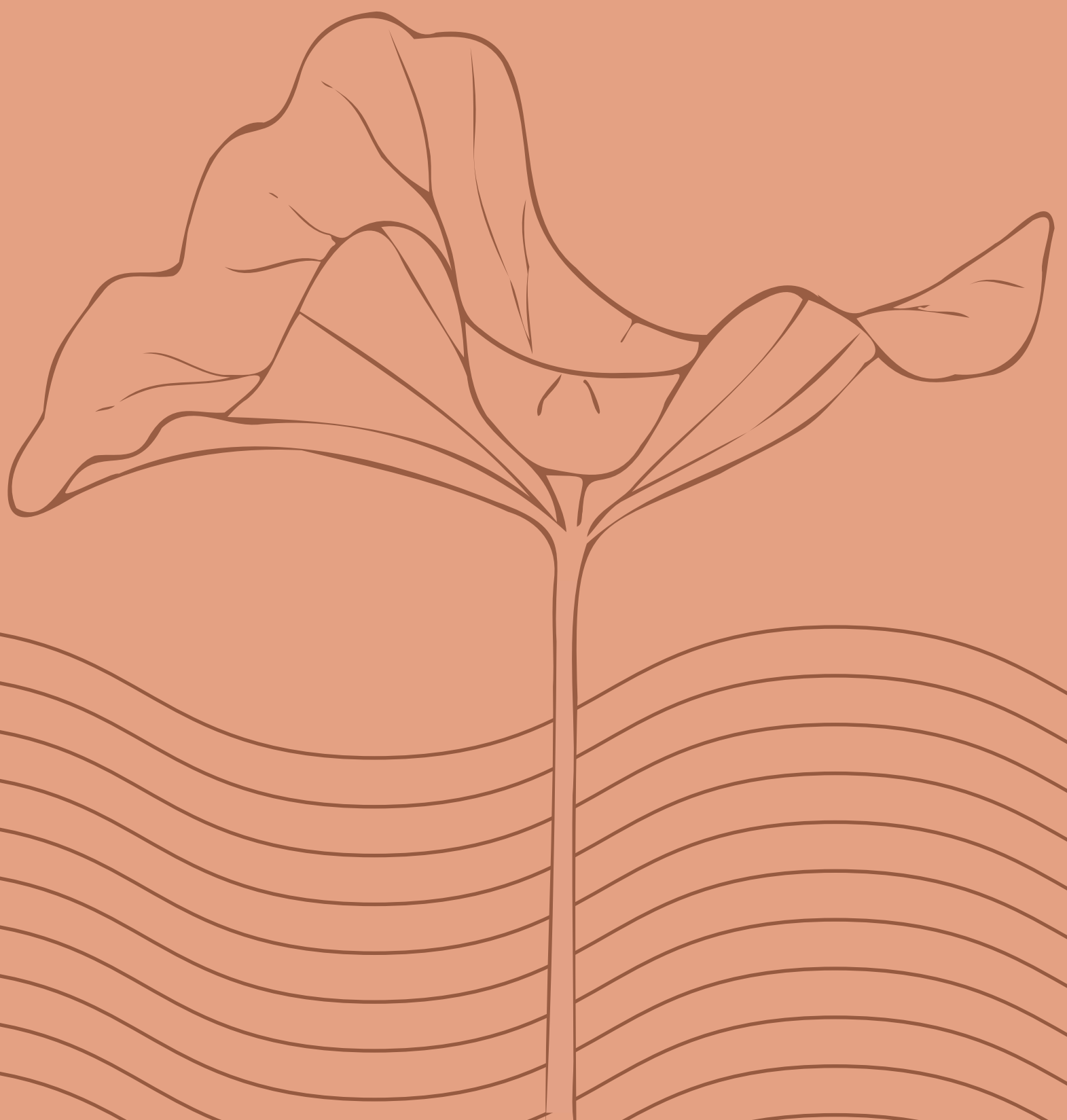


YOUR *vastu*⁺
address

AT A PRIME LOCATION



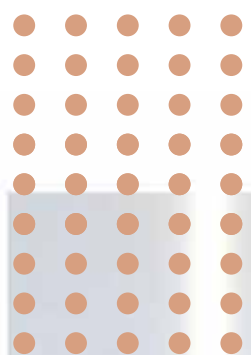
amenities



dive into freshness+

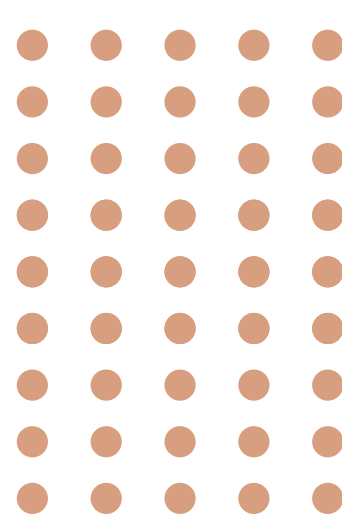
COOL OFF WITH A DIP IN THE SWIMMING POOL, BE IT AFTER A LONG DAY AT WORK OR JUST BEFORE TAKING ON THE WORLD IN THE MORNING. REJUVENATE YOUR SENSES WITH FACILITIES LIKE STEAM MASSAGE AND A HEALTH AND WELLNESS ROOM. AND FOR THE LITTLE ONES, THERE'S A KIDS' POOL FOR A SPLASH OF FUN AND FROLIC!





celebrate *with fun*+

MARK YOUR BIG MOMENTS
WITH SPLENDOUR AND
LUXURY AT THE BANQUET
HALL WITH PARTY LAWN,
MAKING EVERY CELEBRATION
A MEMORY TO CHERISH.





unwind *together* with *leisure+*

MAKE GATHERINGS WITH FRIENDS
AND FAMILY LIVELY AND FUN AT THE
INDOOR GAMES ROOM, THAT
COMES WITH THE FACILITIES TO
PLAY BILLIARDS, TABLE TENNIS AND
CARDS, AMONG OTHER THINGS.



smash into *activity*+

TEAM UP AND CAUSE A
RACKET WITH YOUR
SKILL SETS, AT THE
BADMINTON COURT.



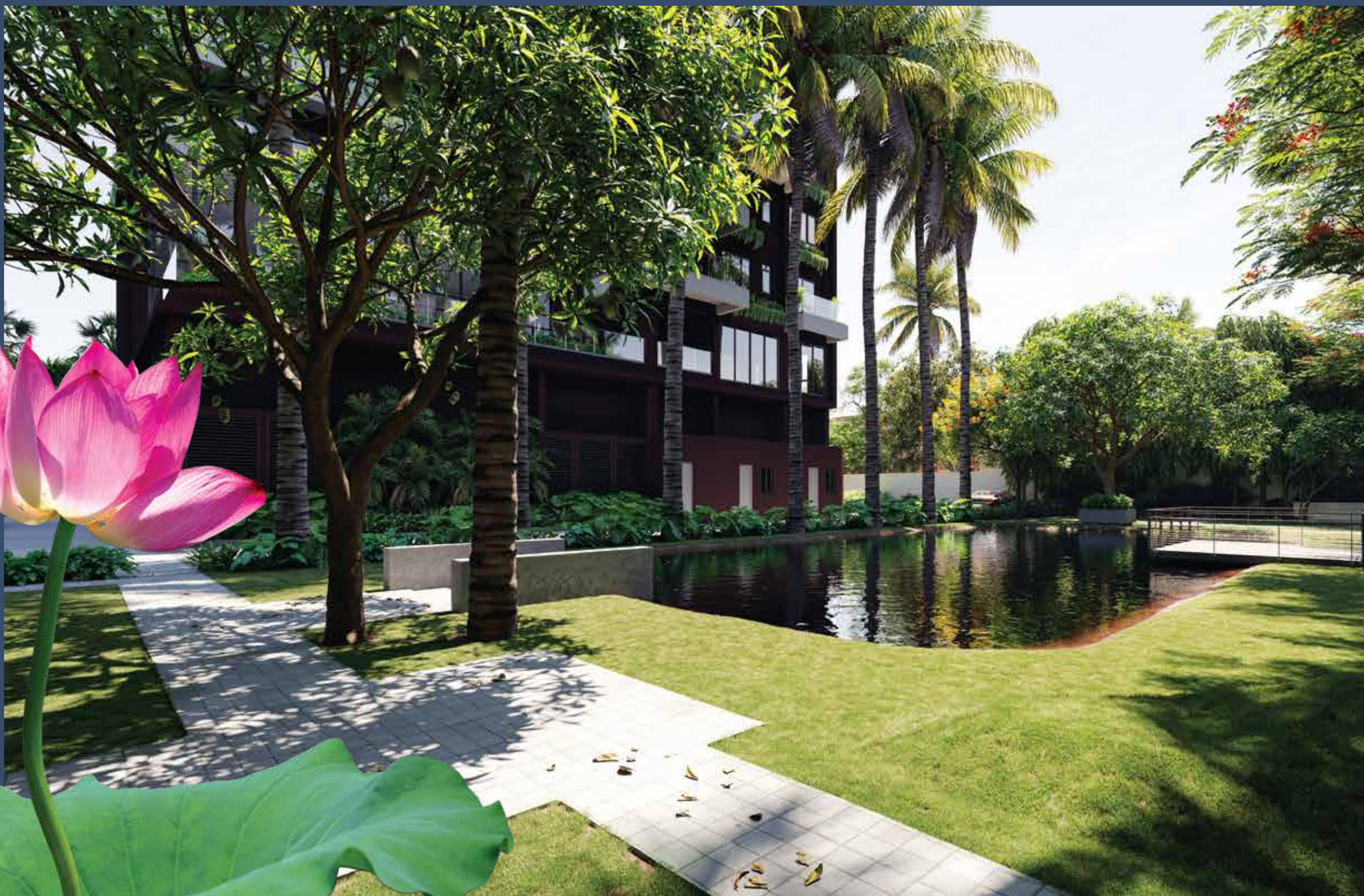


walk into lavishness+

IMPRESS YOUR GUESTS WITH
THE OPULENCE OF A GRAND
ENTRANCE AND LOBBY, LEADING
TO THE VASTNESS OF YOUR
PREMIUM ABODE.

stroll around. serenity+

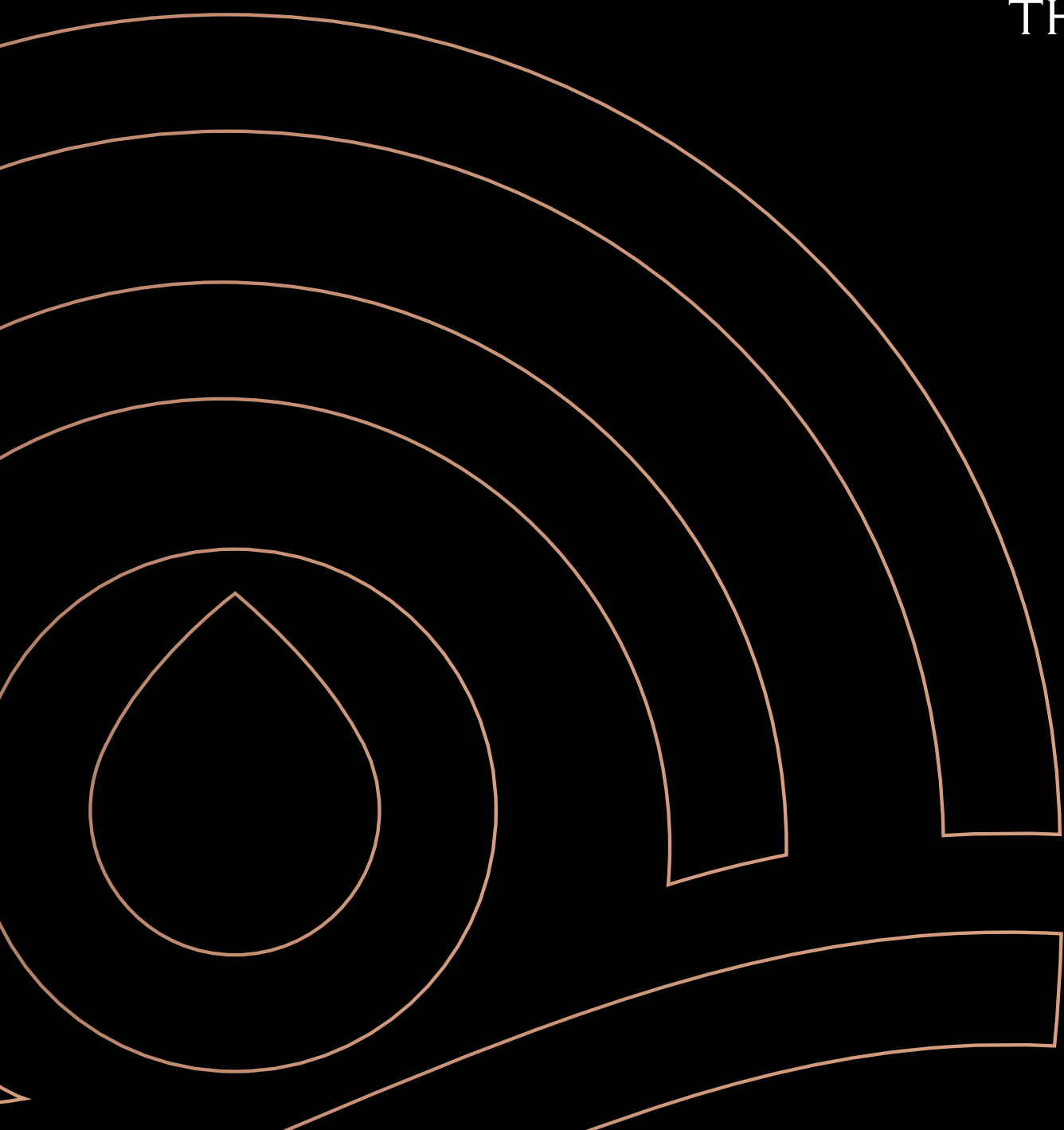
EMBRACE THE CALMNESS OF
NATURE WITH A WALK AROUND
THE GARDEN WITH A QUAIN
LITTLE POND, SITUATED WITHIN
YOUR EXCLUSIVE PREMISES.





workout for *power*+

REALIGN YOUR CHAKRAS, REGAIN
YOUR SENSE OF BALANCE AND
EMANATE STRENGTH WITH A
POWER-PACKED ROUTINE, EITHER AT
THE GYM OR THE YOGA ROOM!



Specifications

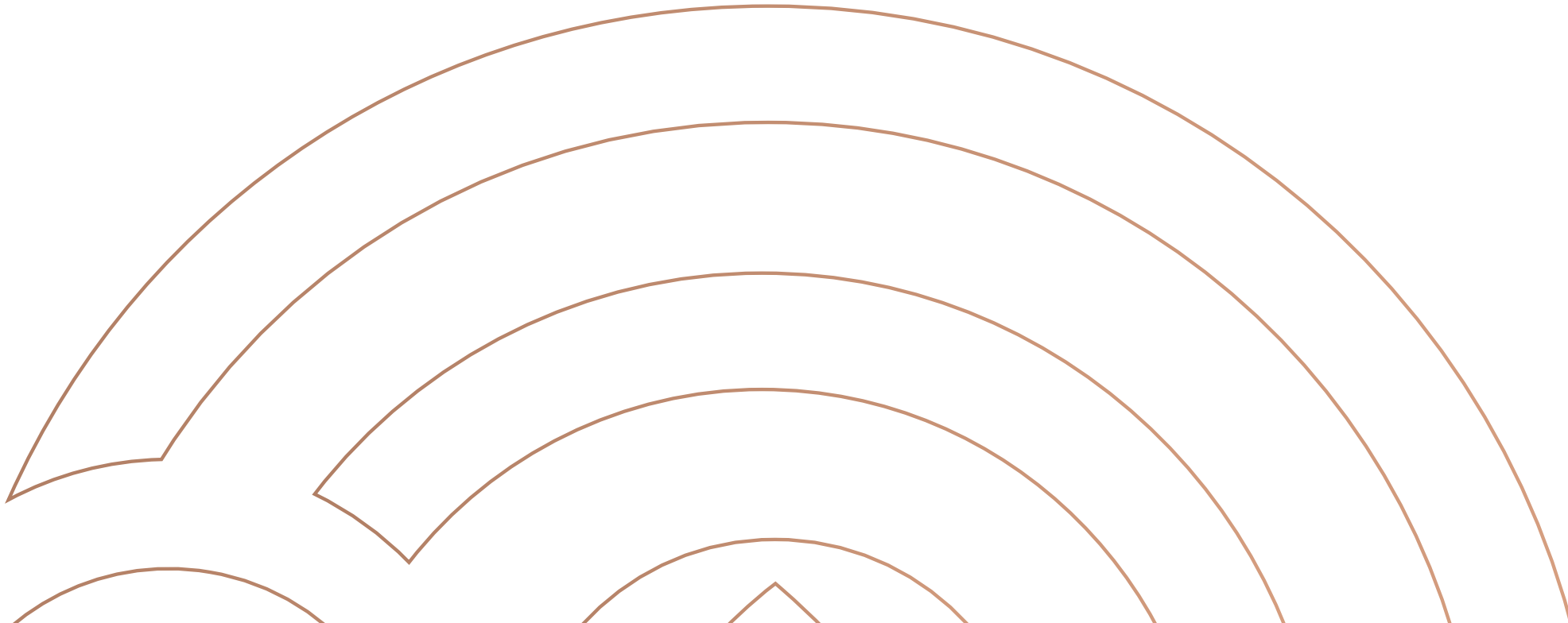
WALL FINISHING		
1	INSIDE FLAT	PUTTY/GYPSUM PLASTER
2	TOILET	CERAMIC TILES ON THE WALL UP TO FRAME HEIGHT
3	KITCHEN	CERAMIC TILES DADO UPTO 2 FEET FROM THE PLATFORM

FLOORING		
1	MASTER BEDROOM	IMPORTED MARBLE
2	BEDROOMS	IMPORTED MARBLE
3	LIVING & DINING	IMPORTED MARBLE
4	KITCHEN	ANTI-SKID CERAMIC TILES
5	TOILETS	ANTI-SKID CERAMIC TILES
6	BALCONY/ TERRACE	ANTI-SKID CERAMIC TILES

OTHER FINISHES		
1	KITCHEN COUNTER	RCC CASTED WITH CUTOUT FOR SINK PROVISION FOR HOT AND COLD WATER

DOOR & WINDOWS		
1	DOOR	WOODEN FRAMES FLUSH DOOR (ONLY ON THE MAIN DOOR WITH LOCK)
2	WINDOWS	ALUMINIUM/UPVC WINDOW
3	ELECTRICAL	PROVISION FOR INTERNET IN LIVING/DINING PROVISION FOR TV POINTS IN ALL THE BEDROOMS & LIVING/DINING
4	TOILETS	CONCEALED COPPER WIRING WITH MODULAR SWITCHES SANITARY/BASIN, COMMODE & BRANDED CP FITTIN PROVISION FOR GEYSER AND EXHAUST FAN IN ALL THE TOILETS

FOR THE STORE ROOM & TOILET		
1	FLOOR	CERAMIC TILE
2	WALL DADO - TOILET	CERAMIC IN THE TOILET UP TO 7 FEET HEIGHT
3	WINDOW	ALUMINIUM/UPVC WINDOW
4	DOOR FRAME	WOODEN FRAME
5	DOOR SHUTTER	FLUSH DOOR SHUTTER WITH COMMERCIAL FACE





Call: 9674244066

Email: info@mdproperties.co