

SIDDHA

where
blù
is ultra
luxe





blù

AT **SIDDHA SKY**

Escape the polluted city life and experience the luxurious, spacious and modern apartment at **blù**.

With its breathtaking city views, you can take in everything the city has to offer from the comfort of your own home.

Don't miss out on this unique opportunity to elevate your quality of living.



located just
off EM Bypass
and Phoolbagan
Crossing, blù will
soon become
the epitome of
excellence



the conveniences are located just a stone's throw away!

Nearby Places

Phoolbagan Metro

2 kms | 6 mins

Kankurgachi Pantaloons

2.3 kms | 7 mins

ITC Royal Bengal/Sonar

2.3 kms | 7 mins

JW Marriott

2.3 kms | 7 mins

Hyatt Regency/
Salt Lake Stadium

2.5 kms | 8 mins

Kankurgachi Jain Mandir

2.4 kms | 9 mins

Apollo Gleneagles Hospital

3 kms | 10 mins

Sealdah Station

3.1 kms | 10 mins

Mani Square

3.2 kms | 10 mins

NSC Bose

International Airport
12.5 kms | 30 mins



the modern definition of luxury



The imagery shown in this e-booklet is indicative and representational (not actual) and is only for the purpose of illustrating/indicating a possible elevation of the project building. The promoter may alter/modify the elevation and other features of the project building in terms of sanctioned plan.

view from the apartment

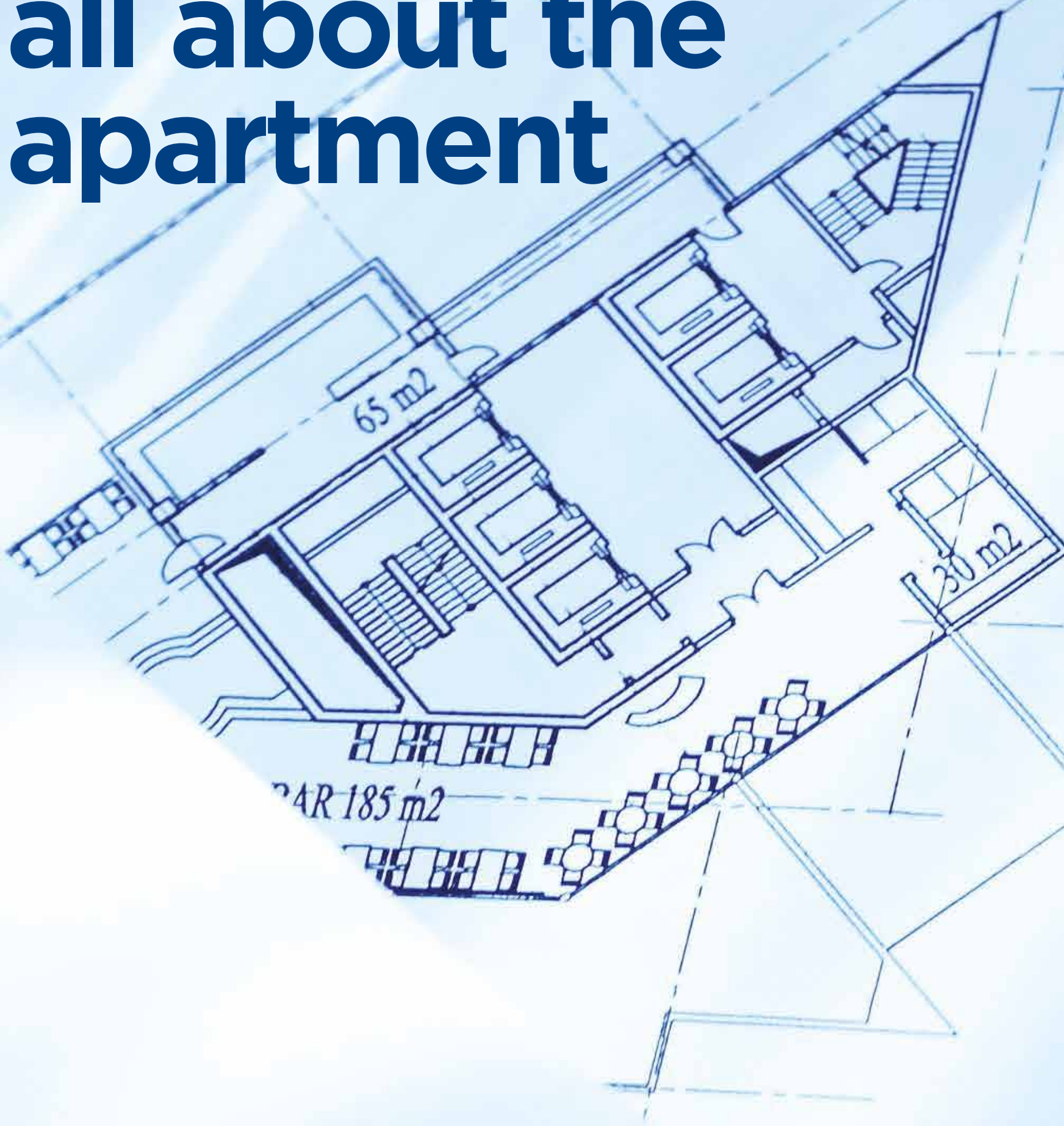


Actual view from **blù**

more than just lavish



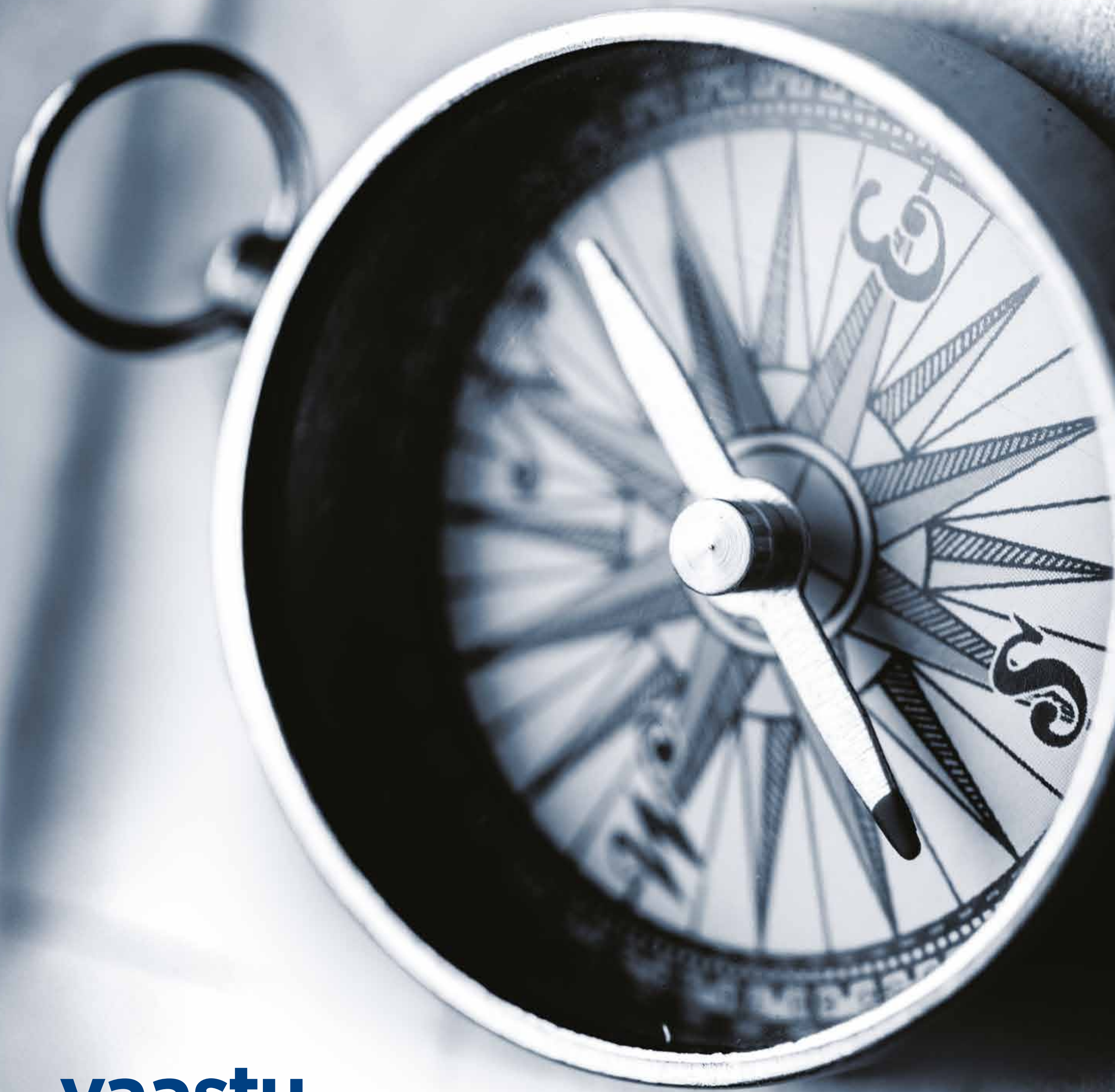
all about the apartment



There are 3 apartments on each floor.

Option of 3.5, 4, 4.5 BHK and Duplex.

The floor-to-floor height will be 3.3 metres.



vaastu compliance

Every apartment is fully vaastu compliant so that peace prevails in your abode, while you have financial prosperity, improvement in health, better bonding in relationships and harmonise positive energy that flows within living spaces.

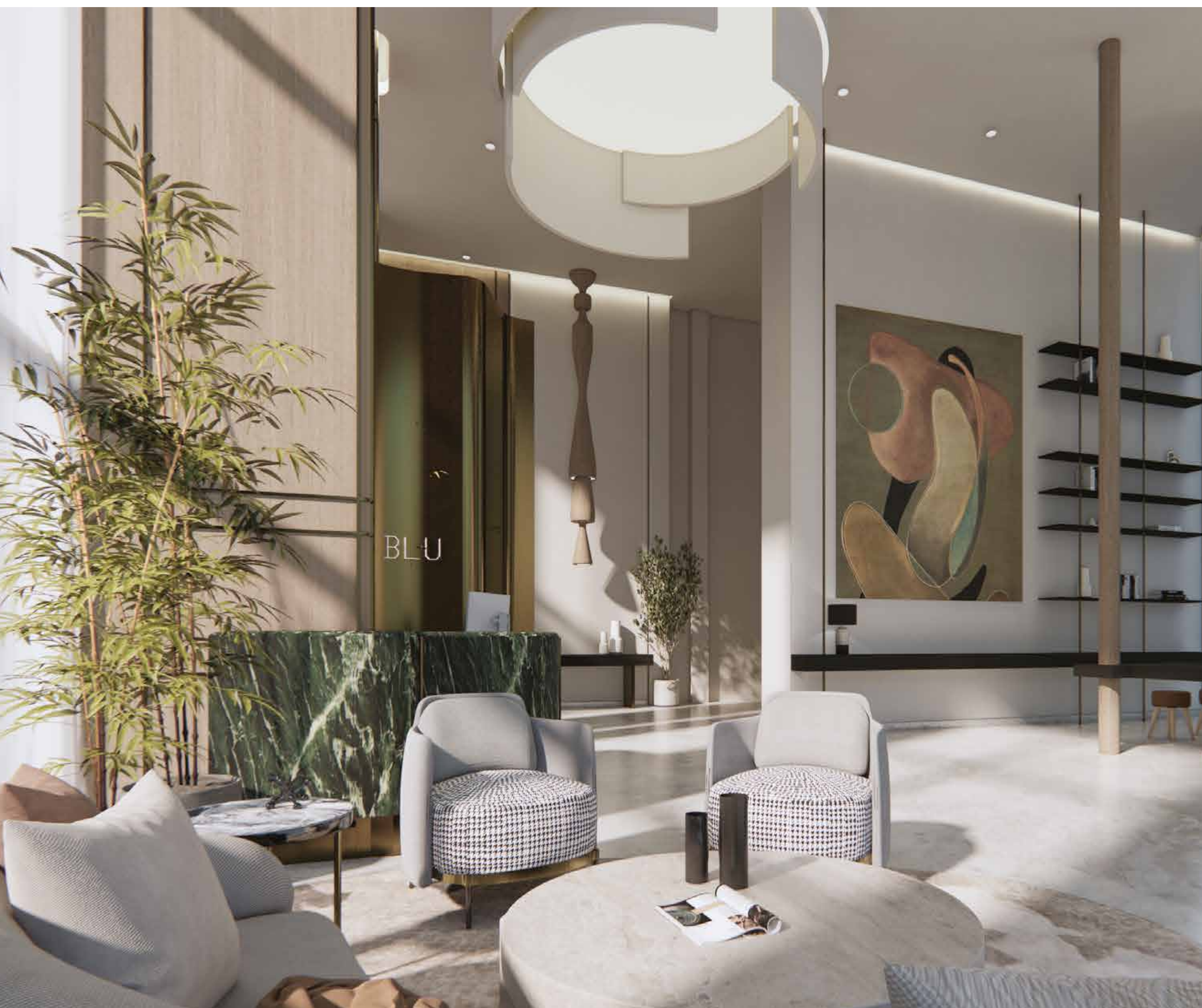
live the lavish way



Enjoy the little pleasures of life as you look over the city from your 3-sides-open luxurious apartment. Cherish the opulence of grand living.



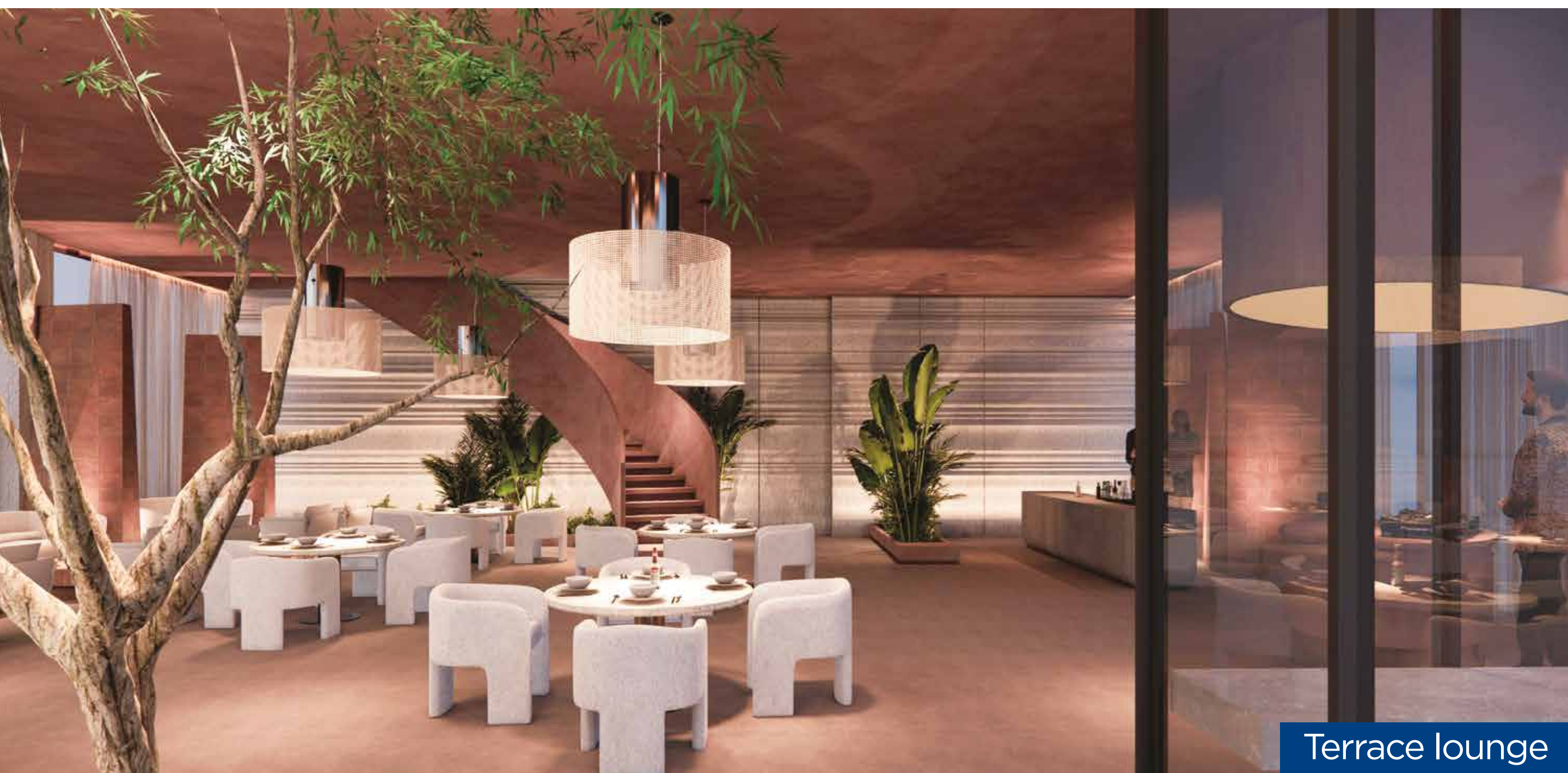
not just an ordinary but a double-height lobby



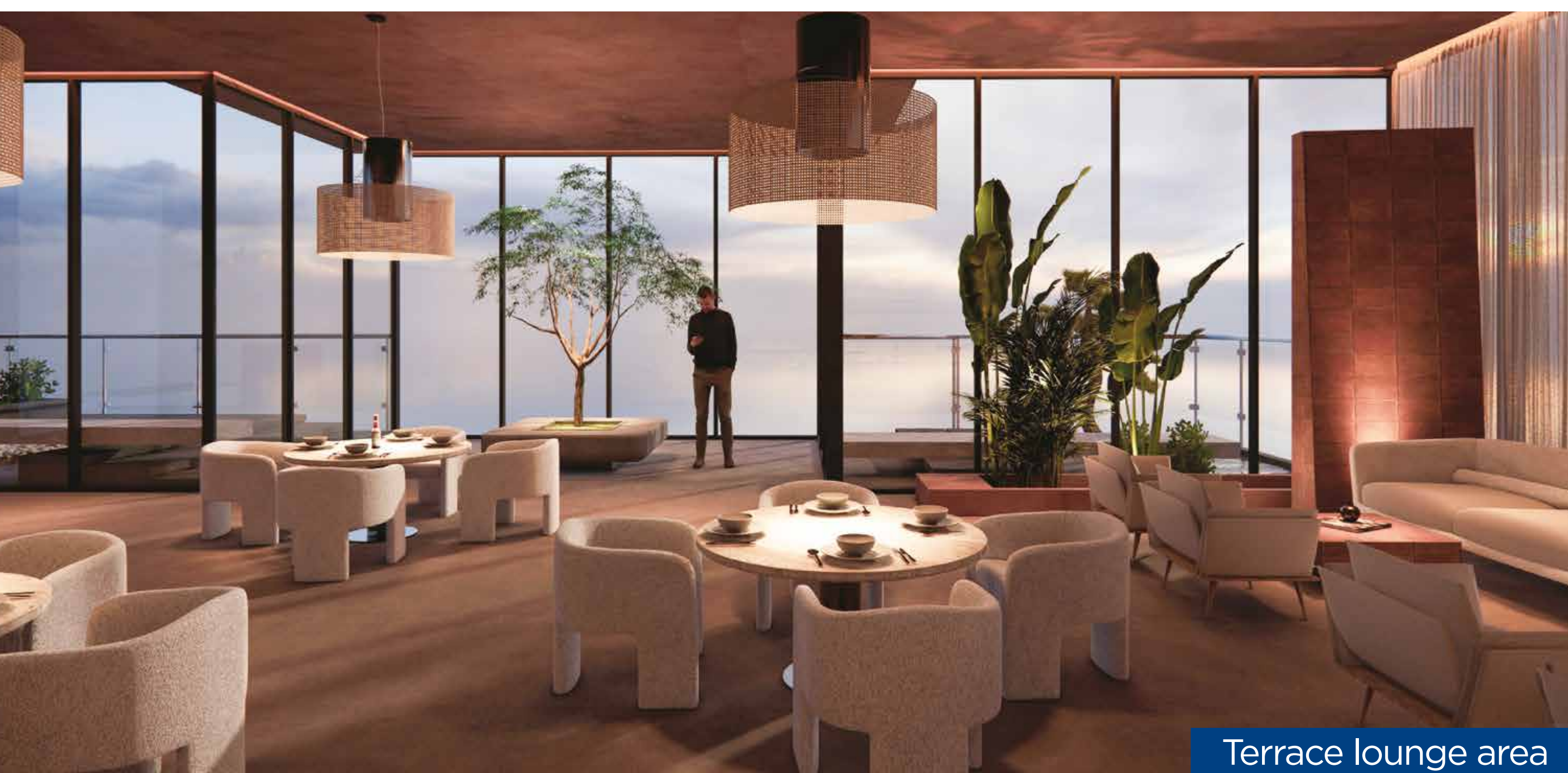
your first impression magnified at our double-height lobby



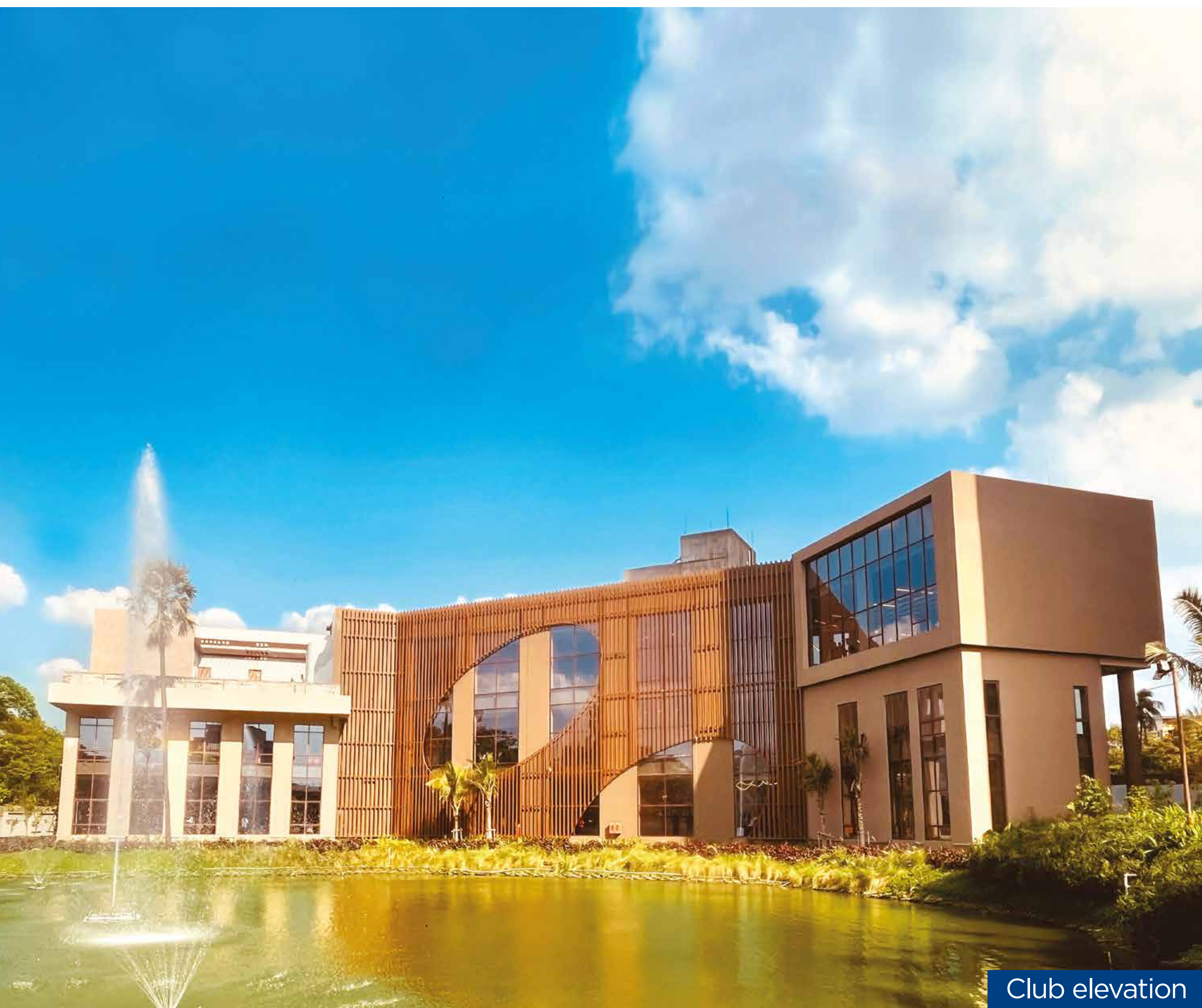
where luxury meets the horizon



Your rooftop rendezvous awaits,
filled with breathtaking
views and exquisite delights.

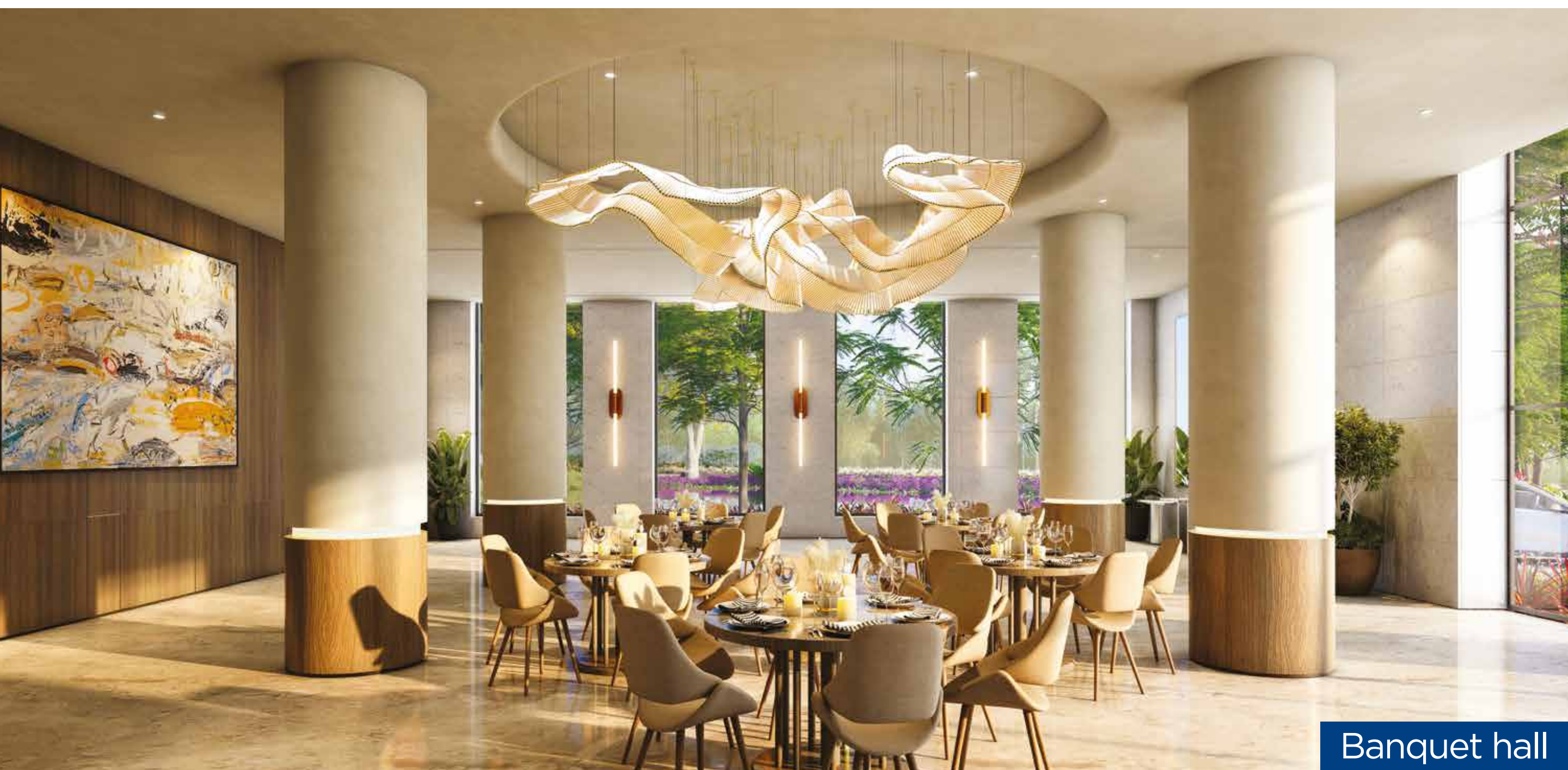


a new height of luxury



Club elevation

the club



Banquet hall

Residents can avail the plush club with all modern amenities at **blù**.



Club reception area

highlights of the club



Swimming pool
with deck

Mini theatre

Crèche

Business lounge

Multipurpose hall

Gymnasium

Indoor games

Cafeteria at
business lounge

Banquet hall

Pre-function room

Squash court

Conference room

Meeting rooms



the rooftop skywalk

The unique Rooftop Skywalk, which is the tallest in Central Kolkata, is an unprecedented bonus.

The sky and you commune together here, amid a lovely walkway and thoughtful amenities that relax the mind and body.

what all one can experience on the skywalk

Kids' play area

Skyplex

Floral garden

Sit-out plaza

Artificial lawn

Outdoor lounge

Senior citizens' area

Yoga and meditation zone

Tot lot

Fitness zone

Adda zone

facilities

Lounge

Intercom network

Rainwater harvesting system

Fire-fighting system

Cable TV and broadband point

24/7 water supply

High-speed elevators

24/7 security and surveillance

Landscaped garden

Water filtration plant

Solar lighting in common areas

Power back-up for common areas

Sewage treatment plant

specifications

Structure

Super Structure ~ Earthquake resistant RCC framed structure with Monolithic concrete

Internal Walls ~ RCC/ACC wall overlaid with White cement putty

Doors

Main Door ~ Paneled Teakwood main door with Timber frames

Windows

Aluminium frames with fully glazed shutters and quality fittings

Flooring

Rooms (including living & dining) ~ Vitrified tiles

Kitchen

Floor ~ Anti-skid tiles

Counter Tops ~ Granite with Steel sink

Dados ~ Ceramic tiles up to a height of 2' (two) feet from the counter top

Toilet

Vitrified/Ceramic tiles

Floor ~ Anti-skid tiles

Dados ~ Ceramic tiles

Sanitary Ware

Accessories ~ Premium sanitary ware of higher grade, Chromium-plated fitting

Telephone Wiring

Central distribution console networked with all apartments

Exterior

Weatherproof exterior finish of the highest quality

Lift Facia

Granite/Marble/Vitrified tiles/Veneer/Laminate finish

Lift Lobby

Granite/Marble/Vitrified tiles

Air Conditioning

VRV/VRF

Lift

Reputed make

Fire-fighting

Fire alarm and detection system as per NOC of Fire Department

blù at a glance

- 3.5, 4 and 4.5 BHK spacious apartments; option of Duplex apartments
- Floor-to-floor height ~ 3.3 metres
- 3-sides-open apartments facing South and/or waterbody and/or East and/or Central landscaped greens
- Fully vastu compliant
- Access to Rooftop Skywalk
- Ultra-modern clubhouse
- Triple-height balcony with all apartments
- 3 strategically positioned balconies with 4 BHK apartments
- 2 strategically positioned balconies with 3.5 BHK apartments
- Cross-ventilated living/dining hall with balcony at both ends
- Living/dining hall up to 500 sq ft
- Lavish bedrooms up to 270 sq ft
- Box room with bedrooms (4 BHK only)
- Puja space (4 BHK only)
- Powder room (guest restroom for 4 BHK only)
- Servants' quarter with all apartments
- High-speed elevators
- Grand double-height ground lobby
- Breathtaking panoramic views from all apartments

SIDDHA

As the pioneer of Rooftop Skywalks in India, we at Siddha are proud of our achievements.

The faith of more than 7000 happy families has translated into us winning the 'Most Trusted Real Estate Brand in East India', awarded by CNBC.

We have delivered over 1 crore sq ft of residential and commercial spaces in Kolkata, Mumbai and Jaipur.



SIDDHA sky
A SEJAL-SIDDHA PROJECT
Phase 1
EM Bypass Kolkata
siddhasky.com
HIRA/P/KOL/2018/000118
hira.wb.gov.in



SIDDHA SERENA
A Sejal-Siddha Project
New Town Kolkata
siddhaserena.in
WBRERA/P/NOR/2023/000638
WBRERA/P/NOR/2024/001015
rera.wb.gov.in



SIDDHA sky
A SEJAL-SIDDHA PROJECT
Sion NX Mumbai
siddhaskymumbai.com
MAHA RERA: P51900021031
maharera.mahaonline.gov.in



SIDDHA SEABROOK
A Sejal-Siddha Project
Kandivali (West) Mumbai
siddhaseabrook.com
MAHA RERA: P51800008859
maharera.mahaonline.gov.in

architect

ingrain



Abhay Bhonsale

Abhay Bhosale of Ingrain is an accomplished architect and urban designer.

He is one of the founding partners of Ingrain, a leading comprehensive architectural consulting firm based out of Mumbai.

The firm has delivered cutting-edge designs through their major projects across contexts, locations and scales.

Abhay is known for his iconic designs, skilful command in the master planning ideas, as well has a keen eye for detail.

blù at Siddha Sky is a product of his passion, commitment and aspiration towards creating one of the most unique projects of Kolkata.

landscape architect

LAYERS
DESIGN STUDIO



Dwaipayan Bhattacharya

LAYERS Design Studio is a boutique design firm with experience of over 14 years offering specialised professional services in landscape architecture and environmental planning.

It is a team of young and energetic group of professionals headed by partners Dwaipayan Bhattacharya and Joyita Das, exercising their core area of knowledge individually as well as collaboratively and are working nationwide for varied range of projects like, Institutional campus, residential complex, individual boutique villa, commercial projects and urban spaces.

here blu is limitless



SIDDHA

Corporate Office

Siddha Esplanade
6 Jawaharlal Nehru Road
Kolkata 700013 India
P +91 33 4007 1515
E info@siddhagroup.com
W siddhagroup.com

Site

33A Canal South Road
Off EM Bypass and Phoolbagan
Kolkata 700015 India
P 8048 767 767
E siddhaskyblu@siddhagroup.com
W siddhaskyblu.com

All features, specifications, amenities, layout images and other aspects of the apartments/building(s)/complex mentioned in this e-booklet are only representational and informative. The same may be subject to change/revision/alteration in terms of approvals, orders, directions and/or regulations of the concerned/relevant authorities, and/or compliance with laws/regulations in force from time to time. This e-booklet is not a legal offer or document.

Project
Financial Assistance

TATA CAPITAL
HOUSING FINANCE LIMITED

WBRERA/P/KOL/2023/000767 | rera.wb.gov.in