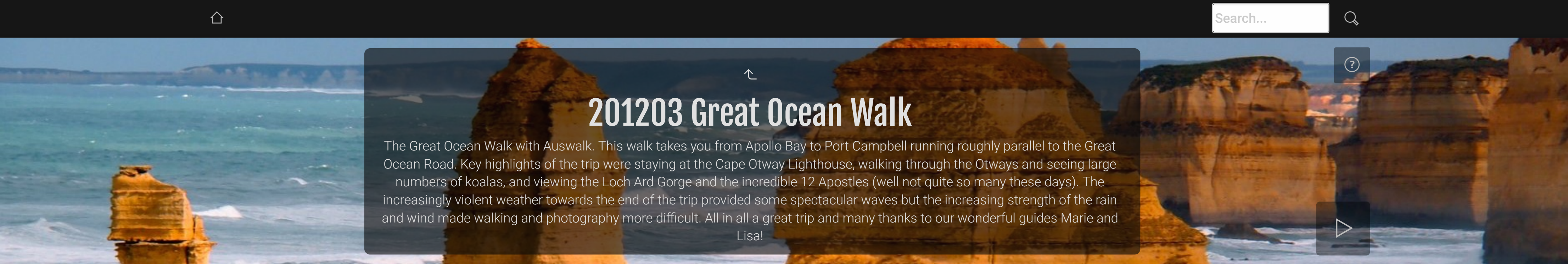




201203 Great Ocean Walk

The Great Ocean Walk with Auswalk. This walk takes you from Apollo Bay to Port Campbell running roughly parallel to the Great Ocean Road. Key highlights of the trip were staying at the Cape Otway Lighthouse, walking through the Otways and seeing large numbers of koalas, and viewing the Loch Ard Gorge and the incredible 12 Apostles (well not quite so many these days). The increasingly violent weather towards the end of the trip provided some spectacular waves but the increasing strength of the rain and wind made walking and photography more difficult. All in all a great trip and many thanks to our wonderful guides Marie and Lisa!





201203 Great Ocean Walk

The Great Ocean Walk with Auswalk. This walk takes you from Apollo Bay to Port Campbell running roughly parallel to the Great Ocean Road. Key highlights of the trip were staying at the Cape Otway Lighthouse, walking through the Otways and seeing large numbers of koalas, and viewing the Loch Ard Gorge and the incredible 12 Apostles (well not quite so many these days). The increasingly violent weather towards the end of the trip provided some spectacular waves but the increasing strength of the rain and wind made walking and photography more difficult. All in all a great trip and many thanks to our wonderful guides Marie and Lisa!



Day 1 Apollo Bay to Shelley Beach

Melbourne Airport to Apollo Bay, walk starts at Marengo (southern end of Apollo Bay) along beach and then heading inland through tall eucalypt forest and...

14 images



Day 2 Shelley Beach to Cape Otway

Back to Shelley Beach through mountain ash forest to Blanket Bay then through coastal forests and cliff top heathlands to Parker Inlet. The track continues...

17 images



Day 3 Cape Otway to Castle Cove

From Cape Otway we walk to Station Beach and Rainbow Falls with rocky coastal platforms below. The track continues along the turbulent ocean beach and some...

24 images



Day 4 Castle Cove to Milanesia Beach

From Castle Cove we enjoy spectacular coastal views with wildflowers, colourful heathlands and numerous grass trees. The track takes us along the long, white...

8 images



Day 5 Milanesia Beach to The Gable

From Milanesia Beach we continue along the cliff tops with views back to the lighthouse - the high sea cliffs provide breathtaking views. We continue through...

17 images



Day 6 The Gable to The 12 Apostles

From The Gable the track continues through a grove of casuarinas to Wreck Beach (with the remains of 2 shipwrecks). We then head to Gellibrand River and...

10 images

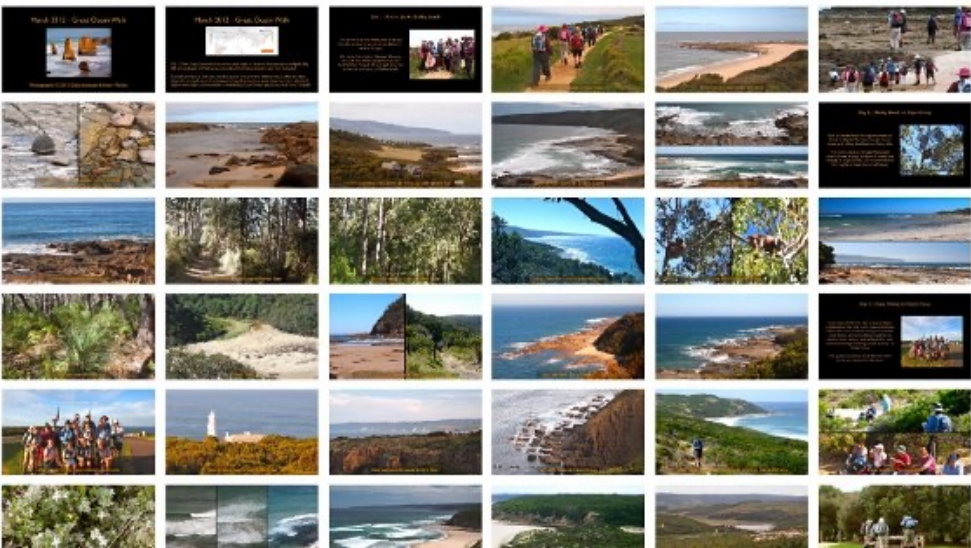


Day 7 Loch Ard Gorge Walk

From Port Campbell we headed back for our walk at Loch Ard Gorge and enjoyed the spectacular scenery (with really wild seas). Then we returned to the 12...

38 images

201203 Great Ocean Walk Contact Sheet



201203 Great Ocean Walk Contact Sheets

Thumbnail images of all slides in Fotomagico presentation.

3 images



Great Ocean Walk itineraries map

Click for itineraries is not active

Day 1 Apollo Bay to Shelley Beach

Melbourne Airport to Apollo Bay, walk starts at Marengo (southern end of Apollo Bay) along beach and then heading inland through tall eucalypt forest and patches of rainforest to Shelley Beach picnic area - accomodation in Apollo Bay



Start of the Great Ocean Walk at Marengo
[Guide photo]



We're off on the Great Ocean Walk



Down to the sea, rocks and sand



Exploring the wavecut rock platform



Wavecut rocks with boulder being eroded



Exploring the rocks and sand



Wavecut rocks and plants



Protected natural harbour and beach



Wavecut rocks showing varying stages of erosion



Looking back towards Marengo and Apollo Bay



Looking back towards Marengo and Apollo Bay



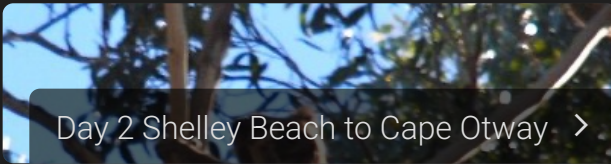
Looking west towards Shelley Beach



Seascape near Shelley Beach



Seascape near Shelley Beach



Day 2 Shelley Beach to Cape Otway >



Day 2 Shelley Beach to Cape Otway

Back to Shelley Beach through mountain ash forest to Blanket Bay then through coastal forests and cliff top heathlands to Parker Inlet. The track continues through Manna gum forests (home to large numbers of koalas) and emerges at Cape Otway - accommodation for 2 nights at Cape Otway Lighthouse.



Leaving the coast at Shelly Beach



Elliot River Track up towards Parker Spur



Elliot River Track up towards Parker Spur



Elliot Road up towards Parker Spur



Elliot Road up towards Parker Spur



Coastal view from the Blanket Bay Track



Koalas on the Blanket Bay Track



Koalas on the Blanket Bay Track



Blanket Bay seascape



Blanket Bay seascape



Grasstrees near Blanket Bay



Parker Inlet



Parker Inlet



Parker Inlet



Stringybark Track near Parker Inlet



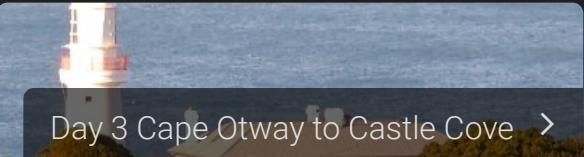
Seascape near Point Franklin



Seascape near Point Franklin



< Day 1 Apollo Bay to Shelley Beach



Day 3 Cape Otway to Castle Cove >



Day 3 Cape Otway to Castle Cove

From Cape Otway we walk to Station Beach and Rainbow Falls with rocky coastal platforms below. The track continues along the turbulent ocean beach and some cliff top heathland to the Aire River estuary and wetlands. The walk continues through stunning coastal scenery to Castle Cove.



Our group at Cape Otway Lighthouse

[Guide photo]



View of Cape Otway Lighthouse



View westwards towards Aire River



Sea cliffs west of Cape Otway



View westwards along Station Beach towards Aire River



Track down to Rainbow Falls



Track down to Rainbow Falls



Dave waiting patiently near track down to Rainbow Falls



Flowering plants (White Correa) west of Rainbow Falls



Seascape Station Beach



Seascape Station Beach



Seascape Station Beach



Seascape Glenaire Beach and Aire River



Aire River



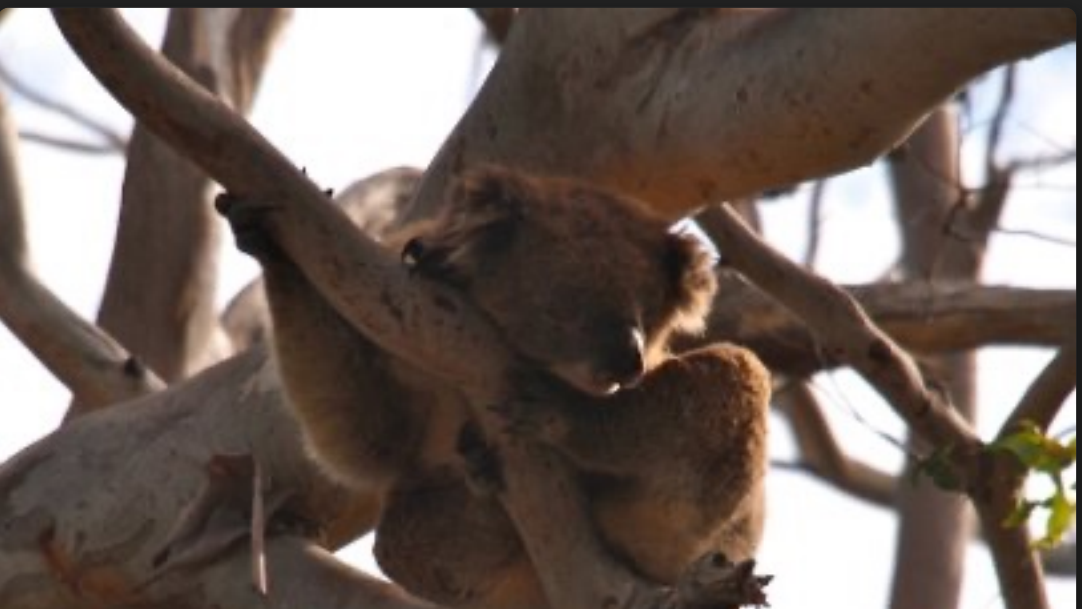
Aire River campsite and bridge



Aire River picnic ground



Koala in Manna gums near Cape Otway Lighthouse



Koala in Manna gums near Cape Otway Lighthouse



Koala in Manna gums near Cape Otway Lighthouse



View east from Cape Otway Lighthouse



Automatic light at Cape Otway Lighthouse



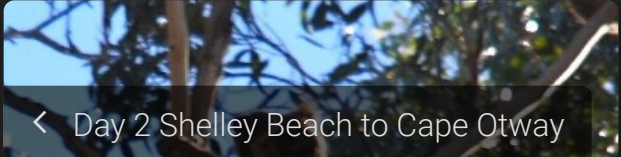
View west from Cape Otway Lighthouse



Cape Otway Lighthouse buildings - cafe and our accommodation



View west from near Cape Otway Lighthouse



< Day 2 Shelley Beach to Cape Otway



Day 4 Castle Cove to Milanesia Beach >



Day 4 Castle Cove to Milanesia Beach

From Castle Cove we enjoy spectacular coastal views with wildflowers, colourful heathlands and numerous grass trees. The track takes us along the long, white sandy Johanna Beach. The track continues to Milanesia Beach - accommodation at Port Campbell for remainder of the walk.



View east from near Castle Cove



Fungus on tree stump



View west from near Castle Cove



View west from above Johanna Beach - note white caps as wind is building up



View west from above Johanna Beach



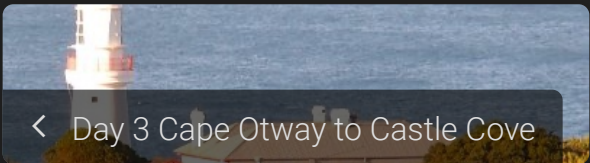
"The hills are alive to the sound of music" from Old Coach Road near Johanna Lookout



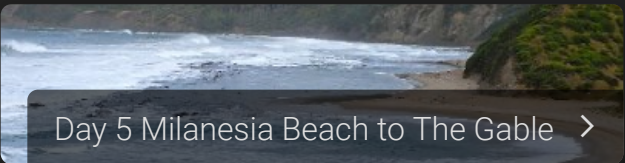
View to the east from Old Coach Road near Johanna Lookout



Ever-eager boatman near to Johanna Carpark



< Day 3 Cape Otway to Castle Cove



Day 5 Milanesia Beach to The Gable >



Day 5 Milanesia Beach to The Gable

From Milanesia Beach we continue along the cliff tops with views back to the lighthouse - the high sea cliffs provide breathtaking views. We continue through coastal forests and a few steep hills to Moonlight Head and then on to Wattle Hill. The walk continues to The Gable Lookout above a high sea cliff.



View westwards along Milanesia Beach



Seascape Milanesia Beach



View westwards along Milanesia Beach towards Moonlight Head



Seascape Milanesia Beach



Curious feature in beachside sandy cliff



Bowler Point with Cape Volney behind



Eastwards along Milenasia Beach



Bowler Point



View towards Ryans Den and Cape Volney



From near Ryans Den campsite



From near Ryans Den campsite towards Cape Volney



Ryans Den Lookout and campsite



Rest spot on Wattle Hill
[Guide photo]



View from rest spot on Wattle Hill



A kangaroo apple (used as a womans contraceptive) near Moonlight Head Cemetery



A curious rock pillar near Moonlight Head



A curious rock pillar near Moonlight Head



< Day 4 Castle Cove to Milanesia Beach



Day 6 The Gable to The 12 Apostles >



Day 6 The Gable to The 12 Apostles

From The Gable the track continues through a grove of casuarinas to Wreck Beach (with the remains of 2 shipwrecks). We then head to Gellibrand River and wetlands. The track descends the Gibson Steps to the 12 Apostles. However the deteriorating weather conditions made us abort that section of the track.



Port Campbell estuary with wild seas



Port Campbell estuary with wild seas



Port Campbell estuary with wild seas



Wild weather along the track towards Devil's Kitchen



Wild weather at the Apostles



Weather at the Apostles



Dave and Anne at the Apostles

[Guide photo]



Near to the Apostles



Anne walking along the track near to the Apostles



End of the Great Ocean Walk - very wet and windy

[Guide photo]

Day 7 Loch Ard Gorge Walk

From Port Campbell we headed back for our walk at Loch Ard Gorge and enjoyed the spectacular scenery (with really wild seas). Then we returned to the 12 Apostles enjoying the views and still quite wild weather (some intrepid walkers took a helicopter flight !!). We then returned to Melbourne via the Apostle Whey Cheese Factory (great metal sculptures and cheese) north of Princetown and a short stop at Birregurra.



Loch Ard Gorge



Loch Ard Gorge



Loch Ard Gorge



Head of Loch Ard Gorge



Head of Loch Ard Gorge



Head of Loch Ard Gorge



Loch Ard Gorge from the beach



Loch Ard Gorge from the beach



Loch Ard Gorge map



Waves around Loch Ard Gorge



Waves around Loch Ard Gorge



Waves around Loch Ard Gorge



Waves and stacks around Loch Ard Gorge



Waves around Loch Ard Gorge



Stacks and the Razorback at Loch Ard Gorge



Waves around Loch Ard Gorge



The Razorback at Loch Ard Gorge



The Apostles



The Apostles



East from the Apostles



East from the Apostles



The Apostles



The Apostles



The Apostles



The Apostles



The Apostles



Recent landslide at the Apostles



One of the Apostles



The Apostles



The Apostles



The Apostles



12 Apostles map



Waiting at the Apostles



Sculptures at the Apostle Whey Cheese Factory



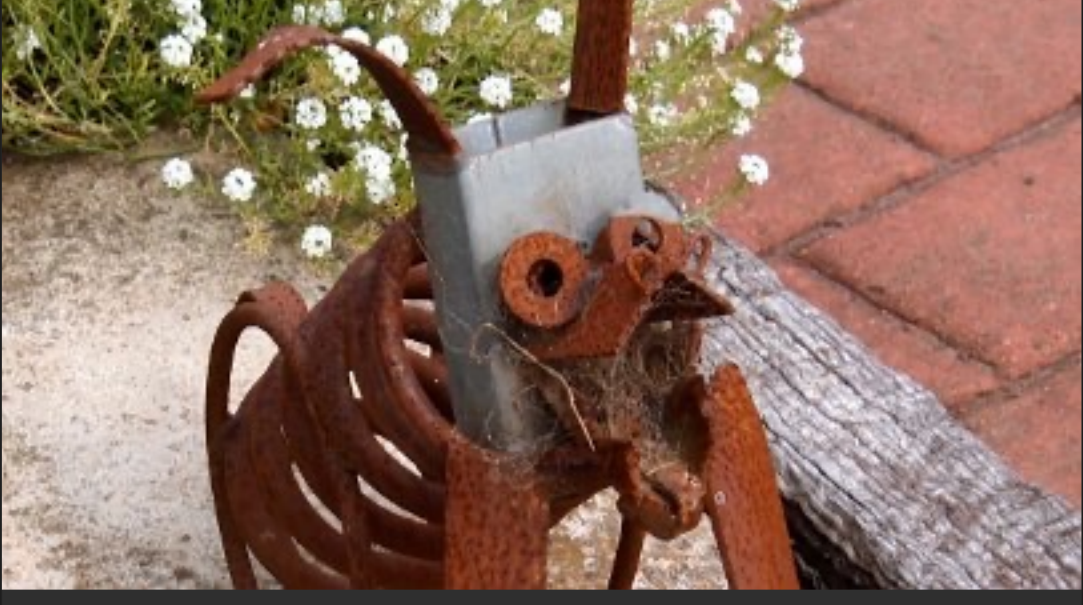
Nessie at the Apostle Whey Cheese Factory



Sculpture at the Apostle Whey Cheese Factory



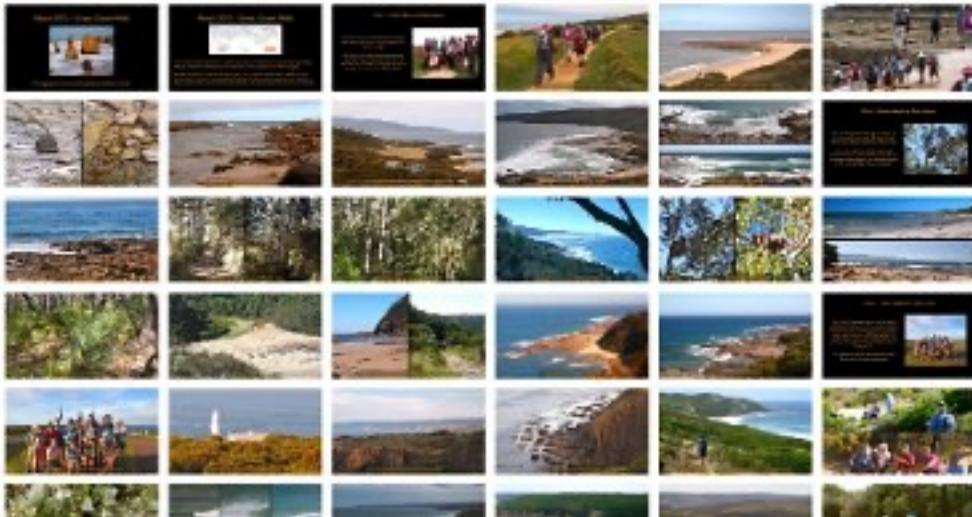
Sculpture at the Apostle Whey Cheese Factory



Sculpture at the Apostle Whey Cheese Factory



201203 Great Ocean Walk Contact Sheet



201203 Great Ocean Walk Contact Sheet 1



201203 Great Ocean Walk Contact Sheet 2

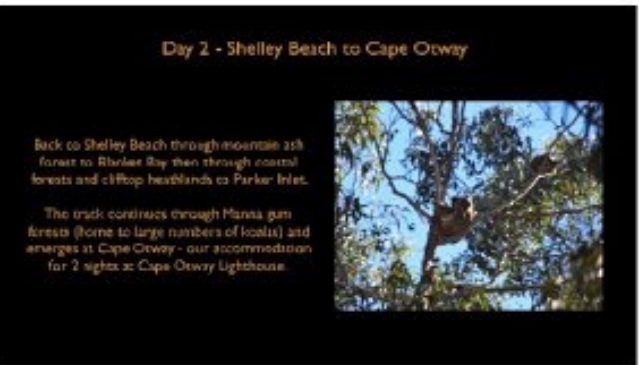
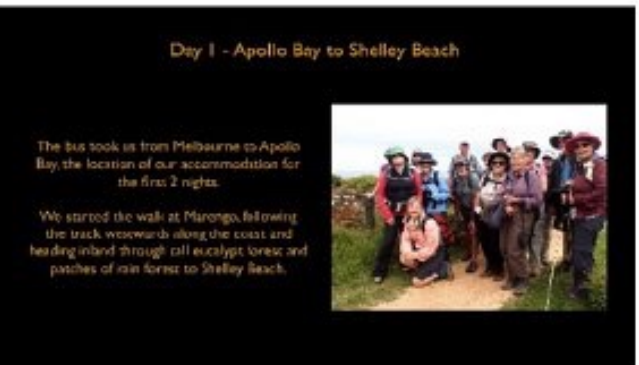
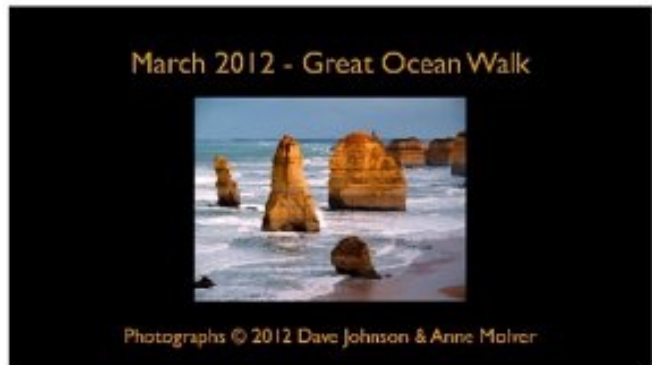


201203 Great Ocean Walk Contact Sheet 3



< Day 7 Loch Ard Gorge Walk

201203 Great Ocean Walk Contact Sheet





Koalas in the forest near Cape Otway Lighthouse



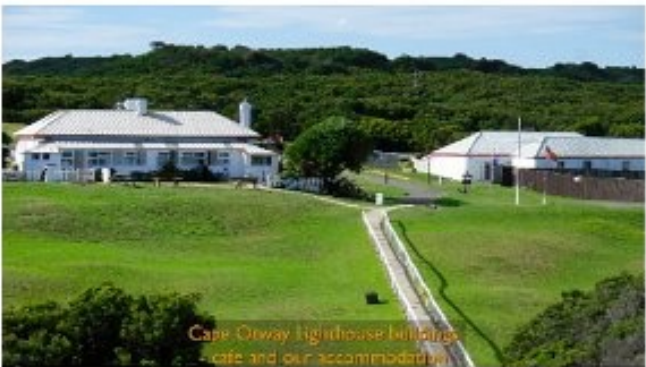
Koala in the forest near Cape Otway Lighthouse



View east from Cape Otway Lighthouse



Aerial view of Cape Otway Lighthouse and surrounding coastline



Cape Otway Lighthouse building and surrounding landscape



Day 4 - Castle Cove to Milnesia Beach

From Castle Cove we enjoy spectacular coastal views with soft, rolling hills and numerous grass trees. The track takes us along the long, sandy Jovanna Beach.

The track continues to Milnesia Beach - where we take the bus to our accommodation for the remainder of the walk at Port Campbell.



View east from near Castle Cove



A person walking on a tree stump



View west from near Castle Cove



View west from above Jovanna Beach - rain clouds as wind is building up



View west from above Jovanna Beach



A group of people walking along a path



View east from Old Coach Road near Jovanna Lagoon



A person walking on a path



Day 5 - Milnesia Beach to The Gable

From Milnesia Beach we continue along the 11F track with views back to the lighthouse - the high sun offers possible breathtaking views.

We continue through coastal forests and a few steep hills to Port Phillip Head and then on to Wattle Hill.

The walk continues to The Gable Lookout above a high sea cliff.



View west from along Port Phillip Head



View west from along Port Phillip Head



View west from along Port Phillip Head



Bowling Point with Cape Volney in the background



View from near Port Phillip Head



View from near Port Phillip Head



A group of people walking along a path



View from near Port Phillip Head



A group of people walking along a path



A rock pillar near Mount the Head



Day 6 - The Gable to The 12 Apostles

From The Gable the track continues through a series of coastal hills with views back to the lighthouse. We then head to Gellibrard Head and its wetlands.

The track descends the Gibson Steps to the 12 Apostles but as the weather conditions continued to deteriorate we had to short cut this section of the track.



A group of people walking along a path



A group of people walking along a path



A group of people walking along a path



A group of people walking along a path



A group of people walking along a path



A group of people walking along a path



Day 7 - Loch Ard Gorge Walk, return to Melbourne

From Port Campbell we headed back for our walk at Loch Ard Gorge and enjoyed the spectacular scenery with rocky cliffs and sea stacks.

Then we returned to the 12 Apostles enjoying the views and still quite wild weather (some steep misters took a helicopter flight).

We then returned to Melbourne via the Apollo Bay Cruise Factory (with great metal sculptures and chess) north of Port Phillip and a short stop at Geelong.



LOCH ARD GORGE

There is a full time boat service to the gorges and across all the port gorges - caught between land and sea.



A group of people walking along a path



A group of people walking along a path



A group of people walking along a path



A group of people walking along a path



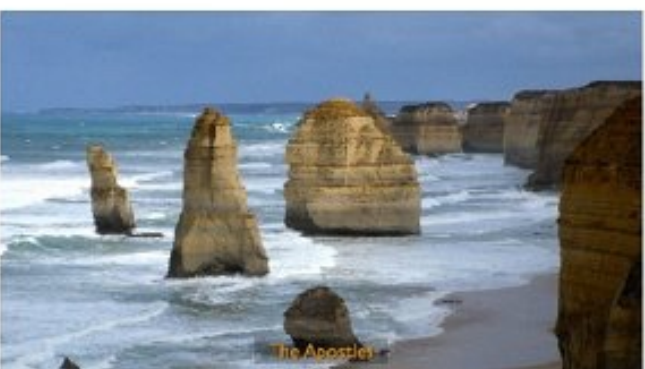
A group of people walking along a path



A group of people walking along a path



A group of people walking along a path



A group of people walking along a path



The Apostles



View from the Apostles



The Twelve Apostles Map



Sculptures at the Apostles Visitor Centre



That's all folks !!
A great trip and many thanks
to our wonderful guides
Marie and Lisa, the Auswalk
team and fellow walkers.



