



201208f Canada (west)

The Rocky Mountaineer train trip from Vancouver to Banff with an overnight in Kamloops was, as they say, "a trip of a lifetime". Incredible scenery, engineering, and comfortable train with excellent host who served great meals. After reaching Banff we took a Tour on a small bus from Banff to the Columbia Icefields - a spectacular experience the highlight of which was climbing up on to the glacier in enormous vehicles - as well as plenty of wildlife and a great driver/guide.



201208f Canada (west)

The Rocky Mountaineer train trip from Vancouver to Banff with an overnight in Kamloops was, as they say, "a trip of a lifetime". Incredible scenery, engineering, and comfortable train with excellent host who served great meals. After reaching Banff we took a Tour on a small bus from Banff to the Columbia Icefields - a spectacular experience the highlight of which was climbing up on to the glacier in enormous vehicles - as well as plenty of wildlife and a great driver/guide.



Day 1 Rocky Mountaineer Vancouver to Kamloops

After leaving Vancouver the Rocky Mountaineer travelled up the side of the Fraser River which is wide and slow moving at first. Further upstream the river was...

46 images



Day 2 Rocky Mountaineer Kamloops to Banff

After our overnight stop in Kamloops the Rocky Mountaineer travelled past several large lakes before making its way across mountain passes with spectacular...

50 images

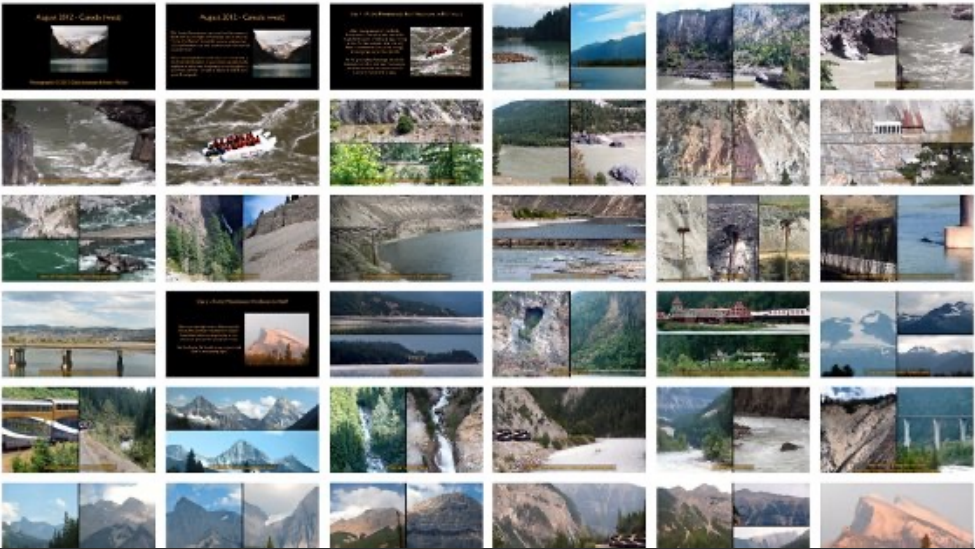


Day 3 Banff Tour to Columbia Icefields

While in Banff we took a small bus tour north on the Icefields Parkway to see the Columbia Icefields. Lake Louise was very picturesque and we saw many more...

42 images

201208f Canada (west) Contact Sheet



201208f Canada (west) Contact Sheets

Thumbnail images of all slides in Fotomagico presentation.

2 images

Search...

?

Day 1 Rocky Mountaineer Vancouver to Kamloops

After leaving Vancouver the Rocky Mountaineer travelled up the side of the Fraser River which is wide and slow moving at first. Further upstream the river was faster and narrower as it passes through several gorges (great for rafters!). As we approached Kamloops the terrain became much drier and less mountainous but there were lots of Osprey nests on convenient poles and bridges.



Fraser River



Fraser River



Rocky Mountaineer entering Fraser River Canyon



Fraser River Canyon



Fraser River Canyon



Fraser River Canyon



Fraser River Canyon



Fraser River Canyon



Hell's Gate with Rafters



Hell's Gate with Rafters



Hell's Gate showing Flood Level



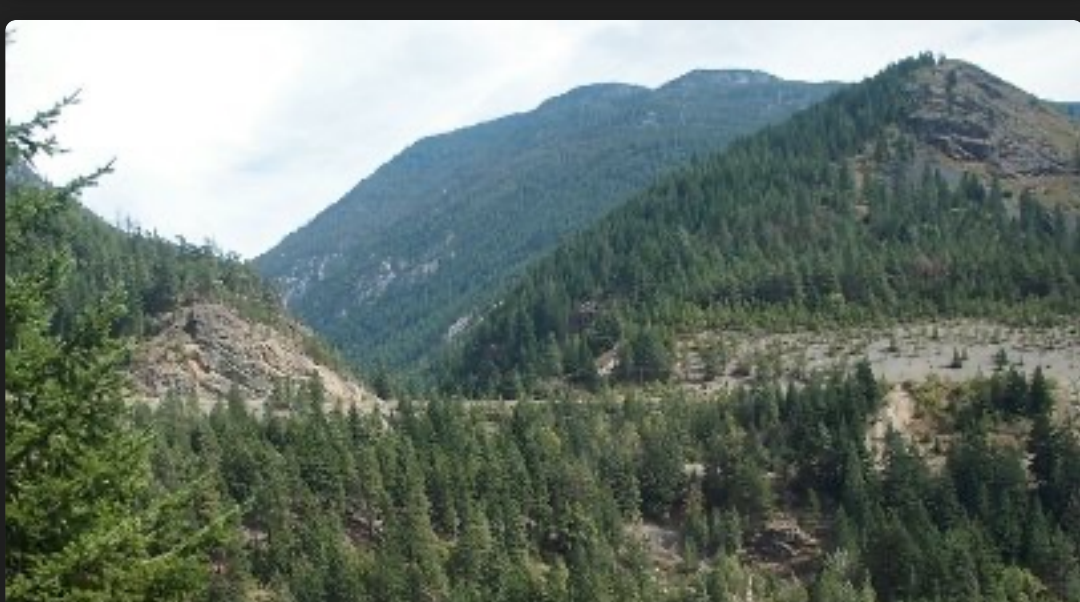
Hell's Gate Rafters



Another Rocky Mountaineer



Thompson River



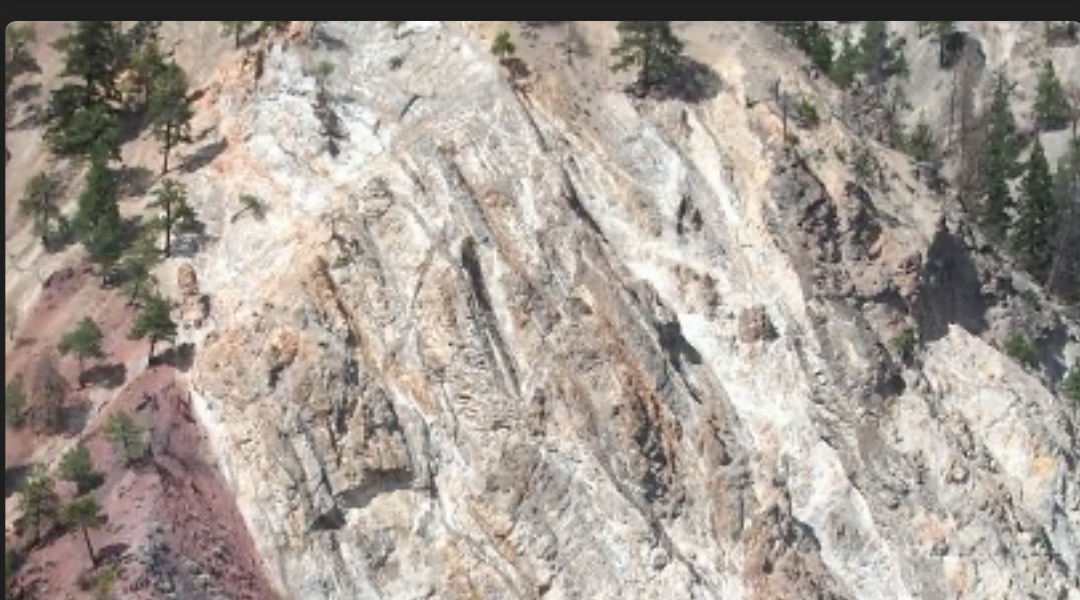
Thompson River



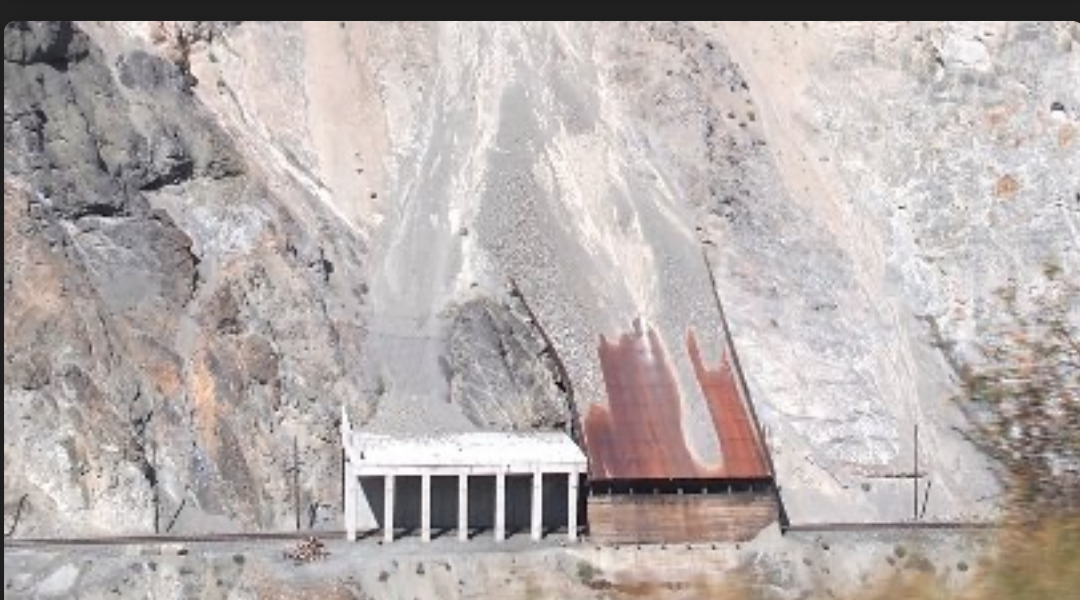
Thompson River



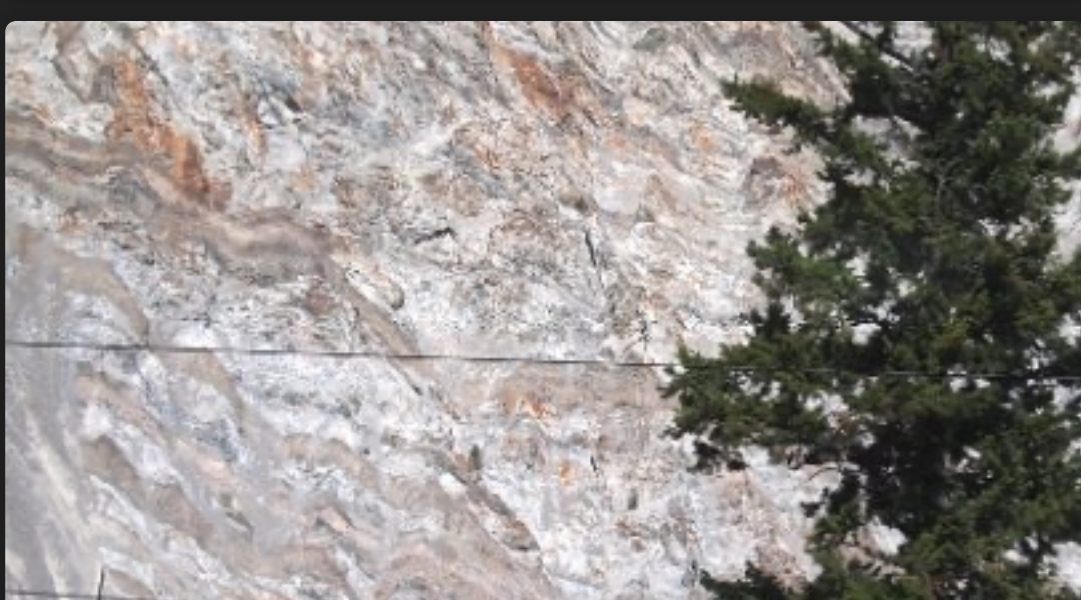
Rainbow Canyon



Rainbow Canyon



Avalanche Alley



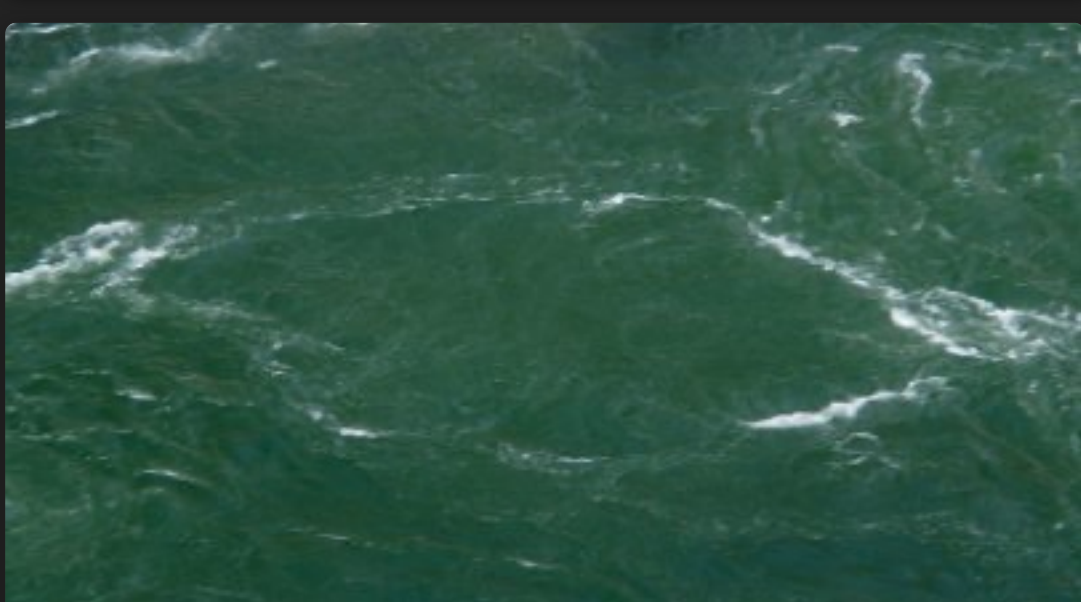
Avalanche Alley



Jaws of Death Gorge



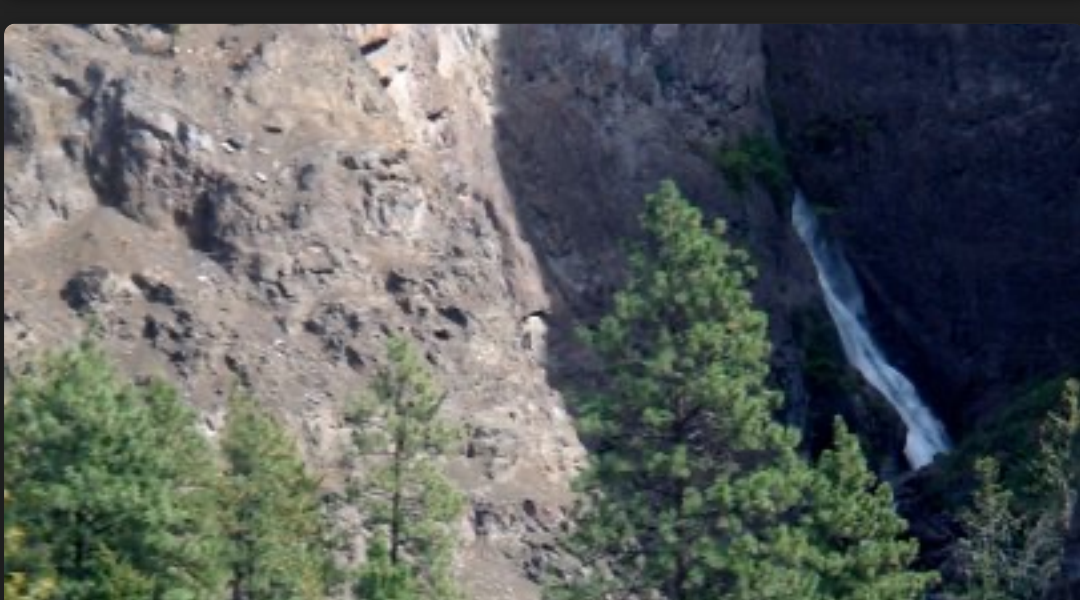
Jaws of Death Gorge



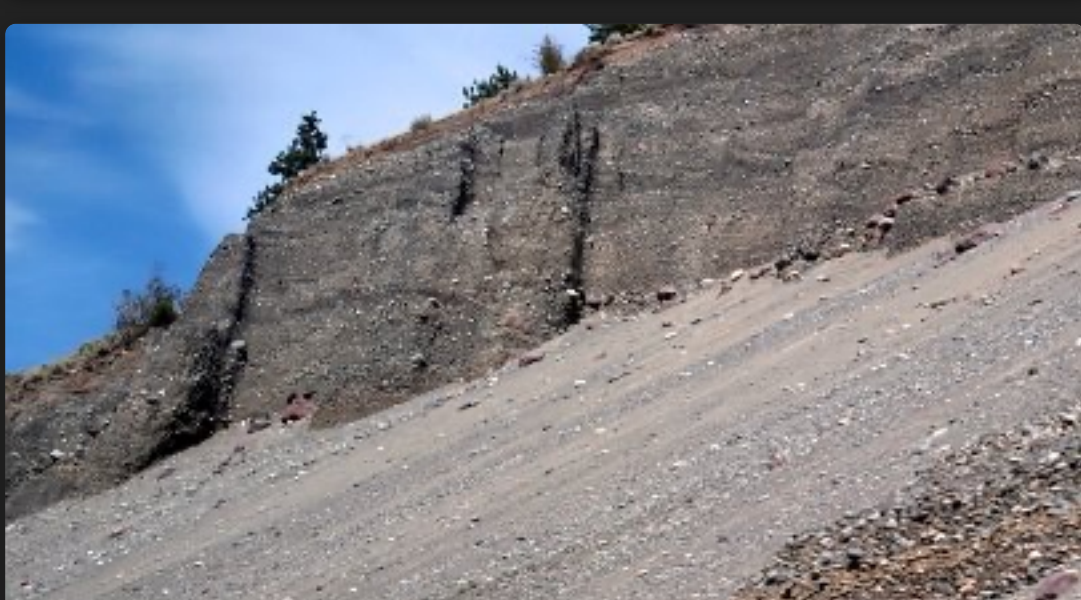
Jaws of Death Gorge



Jaws of Death Gorge - The Frog



Black Canyon



Black Canyon



Thompson River



Thompson River



Rocky Mountaineer on the Thompson River



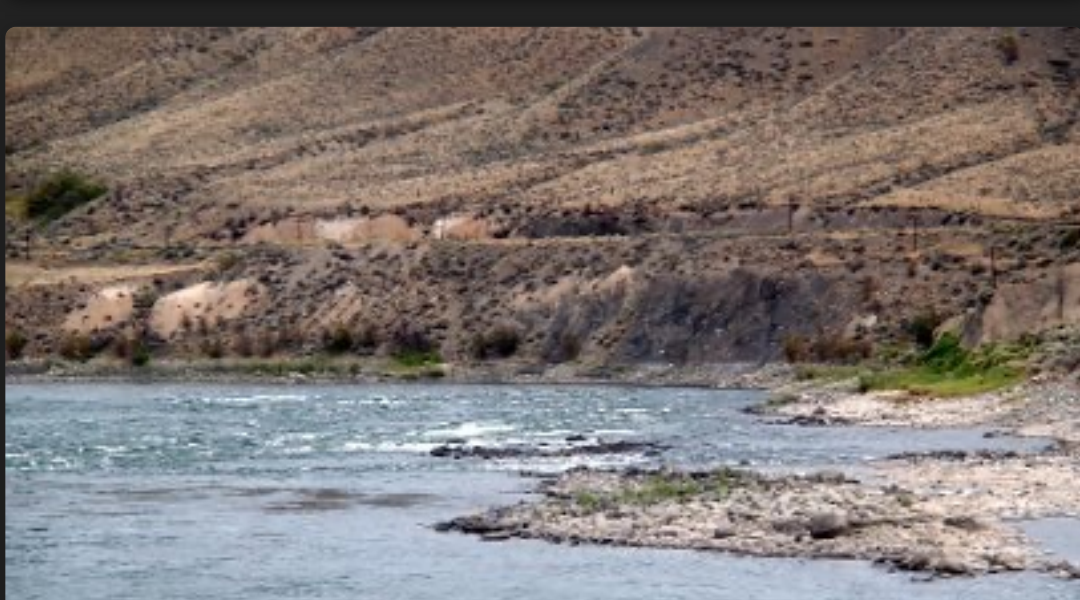
Thompson River



Thompson River



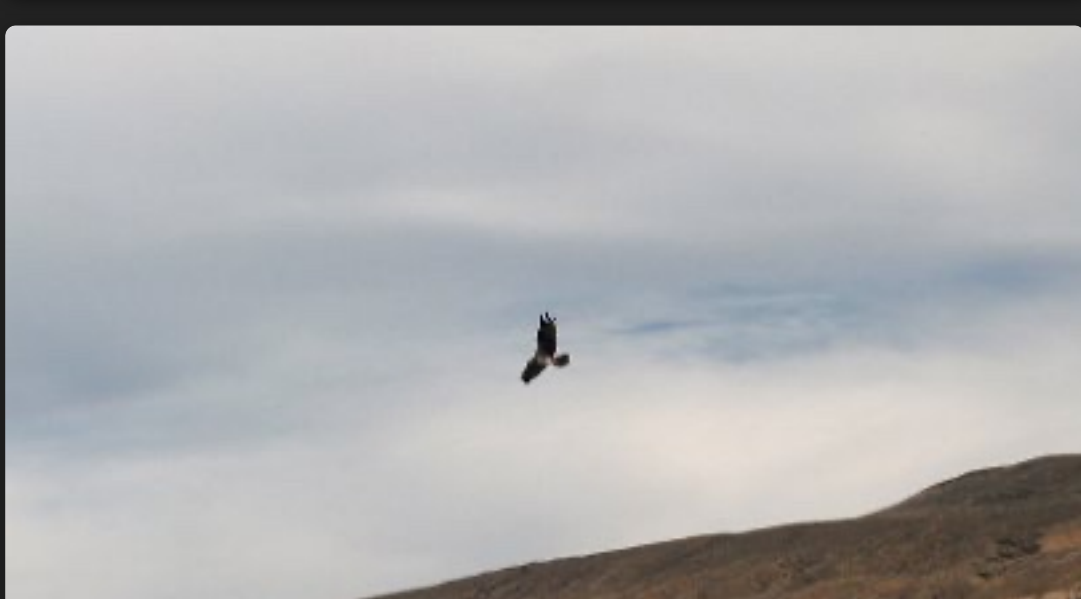
Thompson River



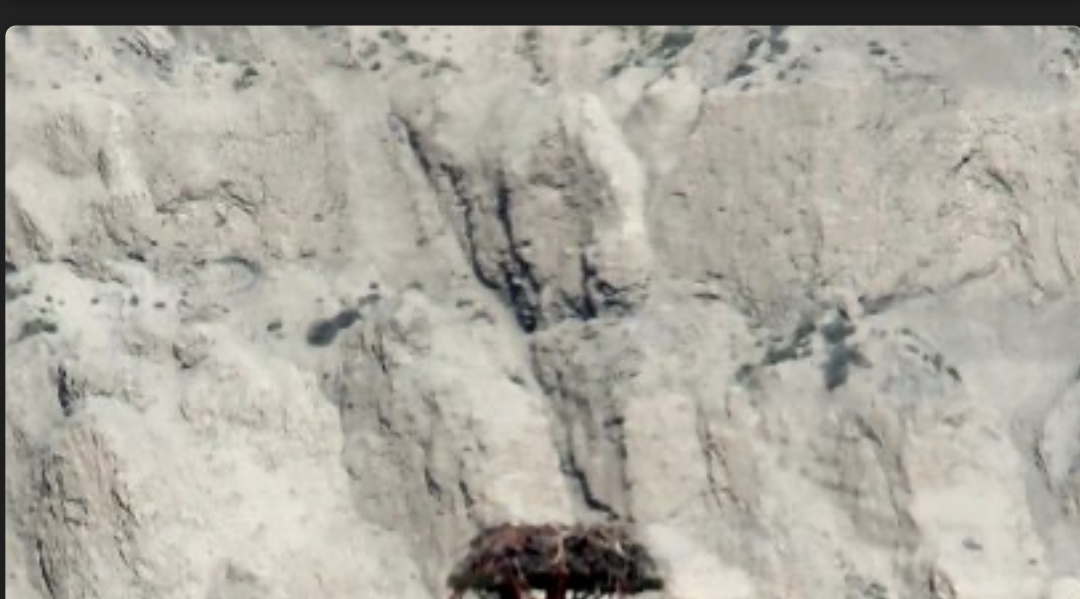
Thompson River



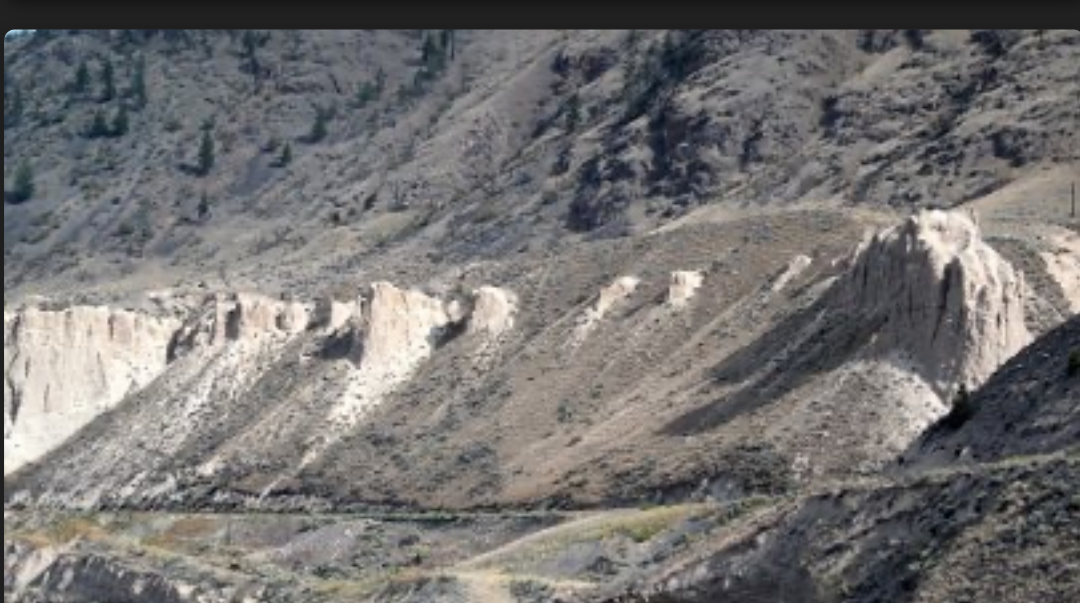
Rocky Mountaineer on the Thompson River



Bird of Prey



Osprey Nest



Thompson River



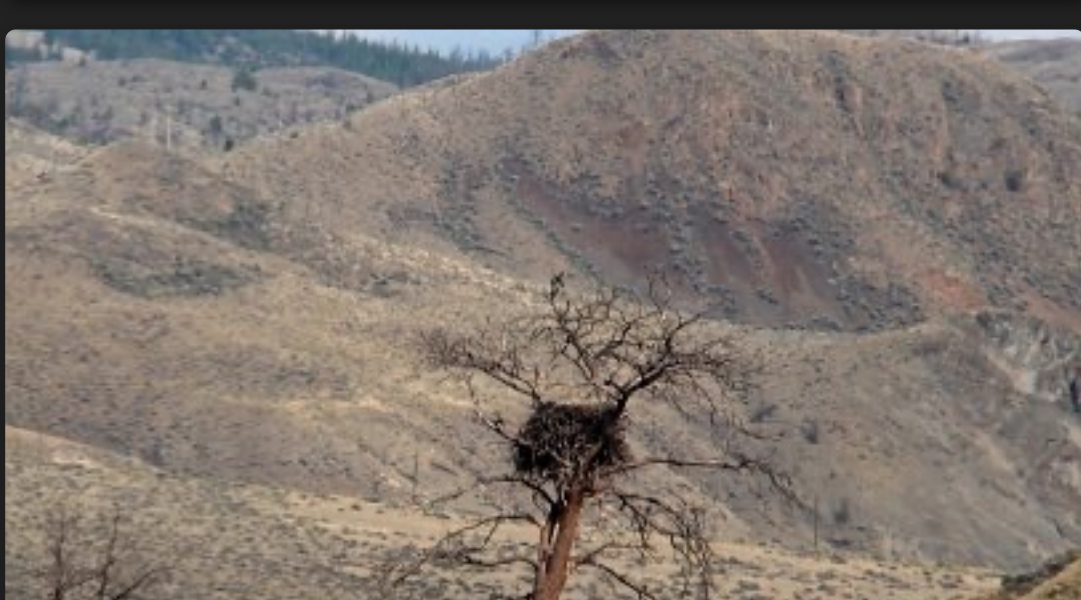
Thompson River



Thompson River - Good Fishing Spot



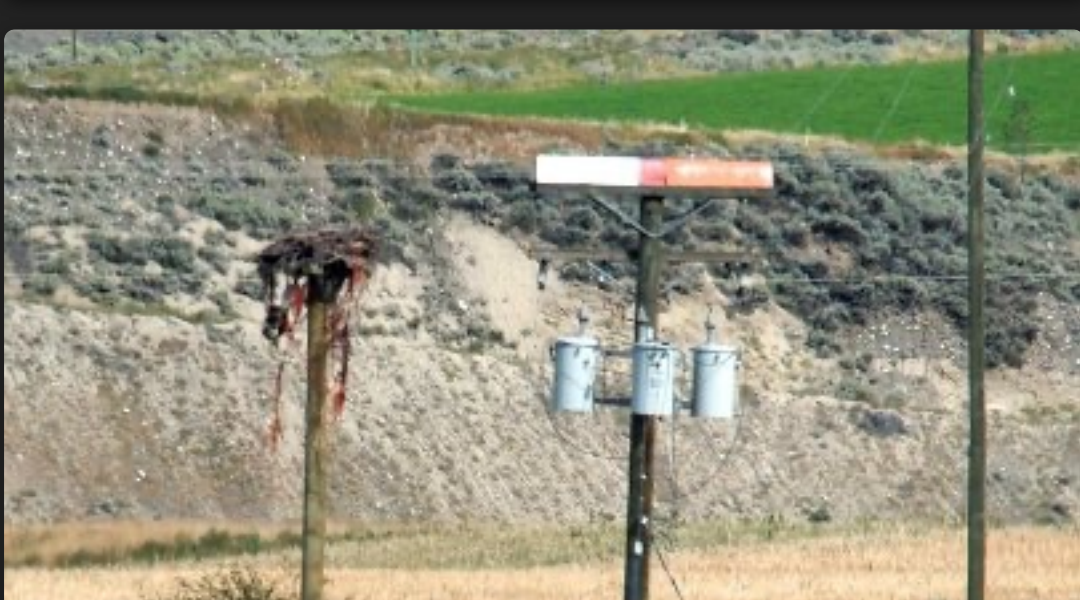
Bird of Prey



Osprey Nest



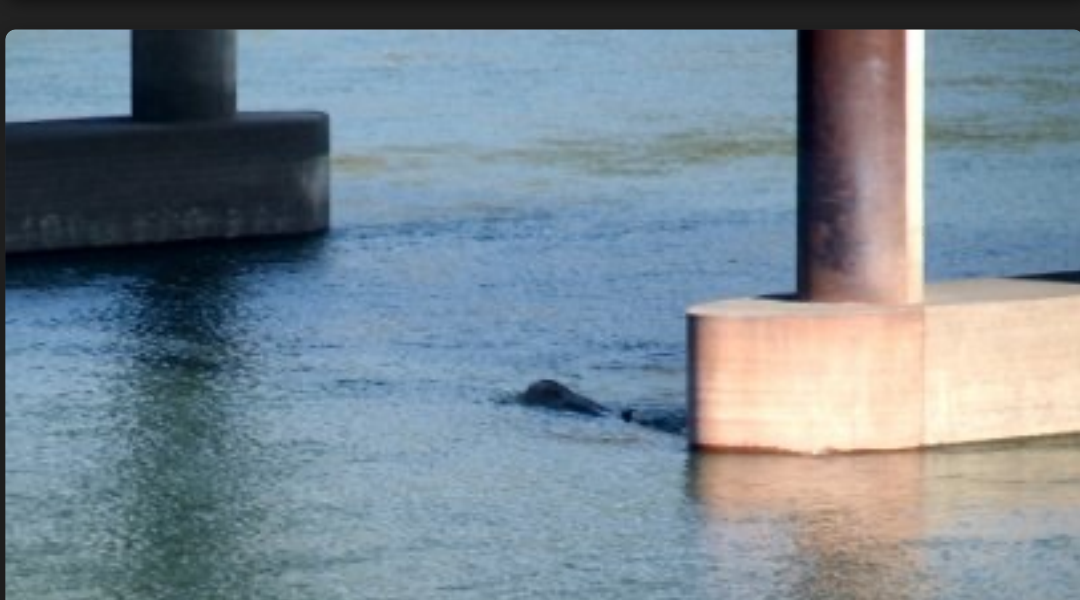
Osprey Nest



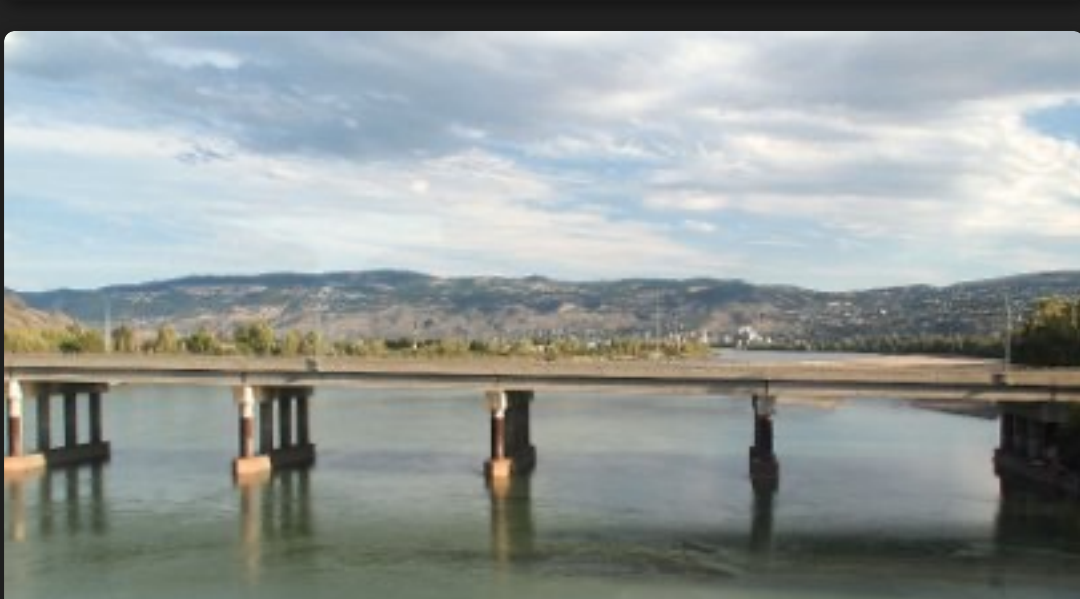
Osprey Nest on Power Pole



Osprey Nest on Bridge



Bridge near Kamloops (with beaver activity)

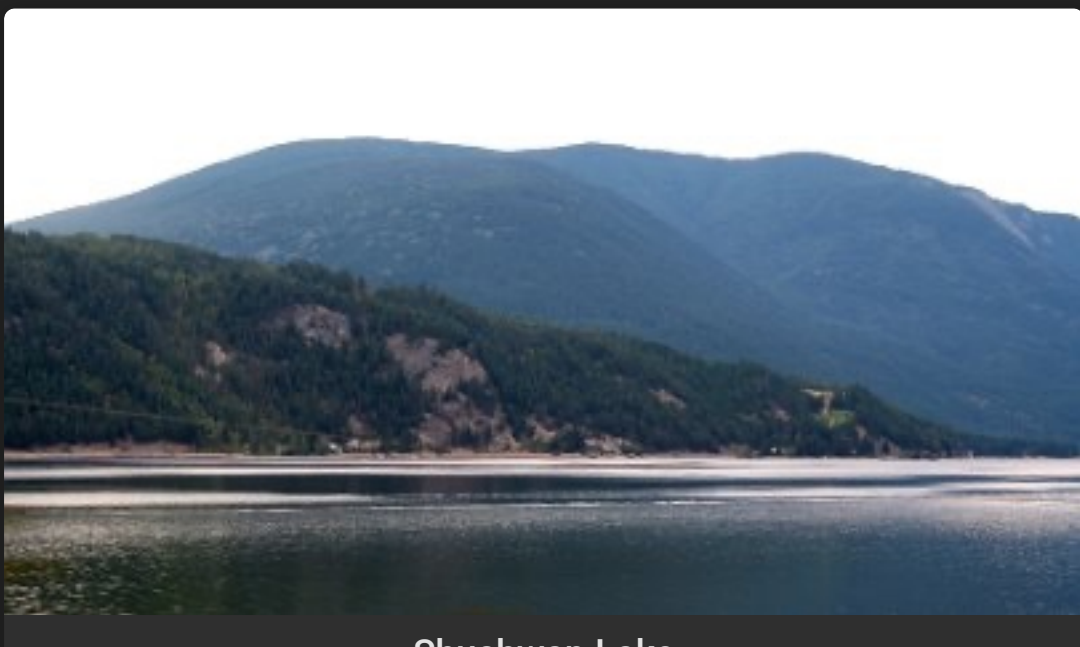


Bridge near Kamloops (in background)

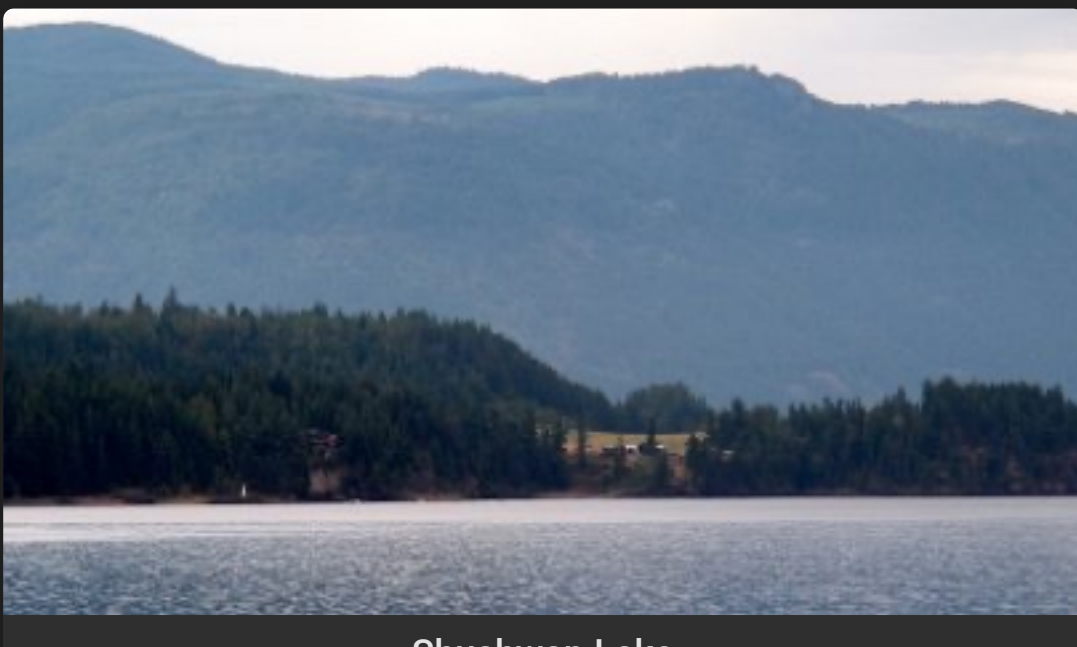
Day 2 Rocky Mountaineer Kamloops to Banff >

Day 2 Rocky Mountaineer Kamloops to Banff

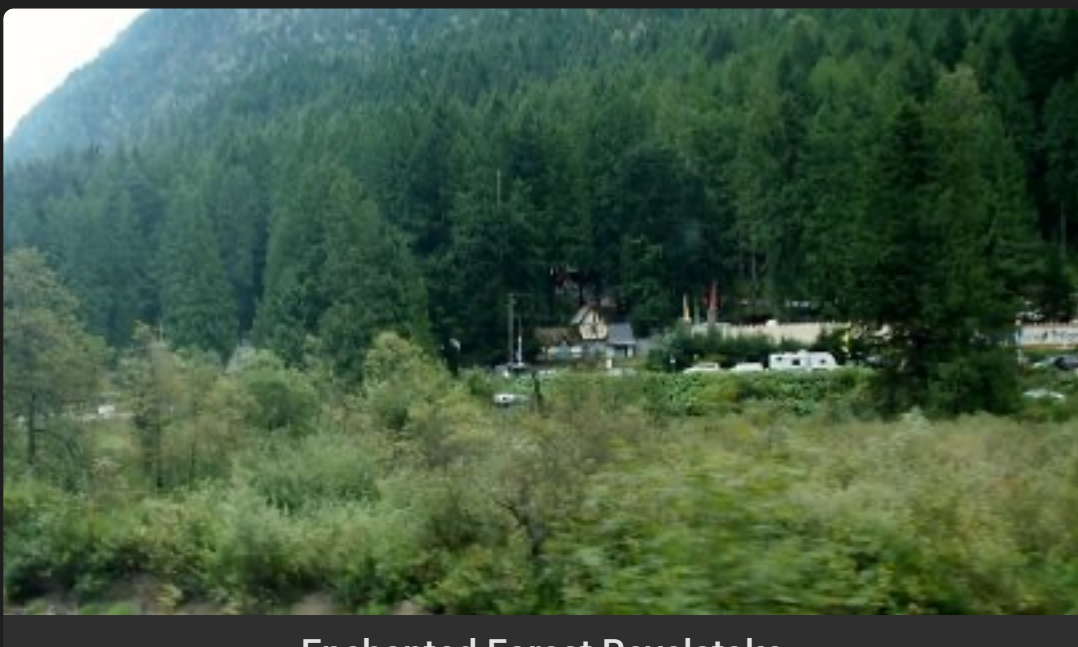
After our overnight stop in Kamloops the Rocky Mountaineer travelled past several large lakes before making its way across mountain passes with spectacular views. We finally saw Mt Rundle as we approach Banff in the evening light.



Shushwap Lake



Shushwap Lake



Enchanted Forest Revelstoke



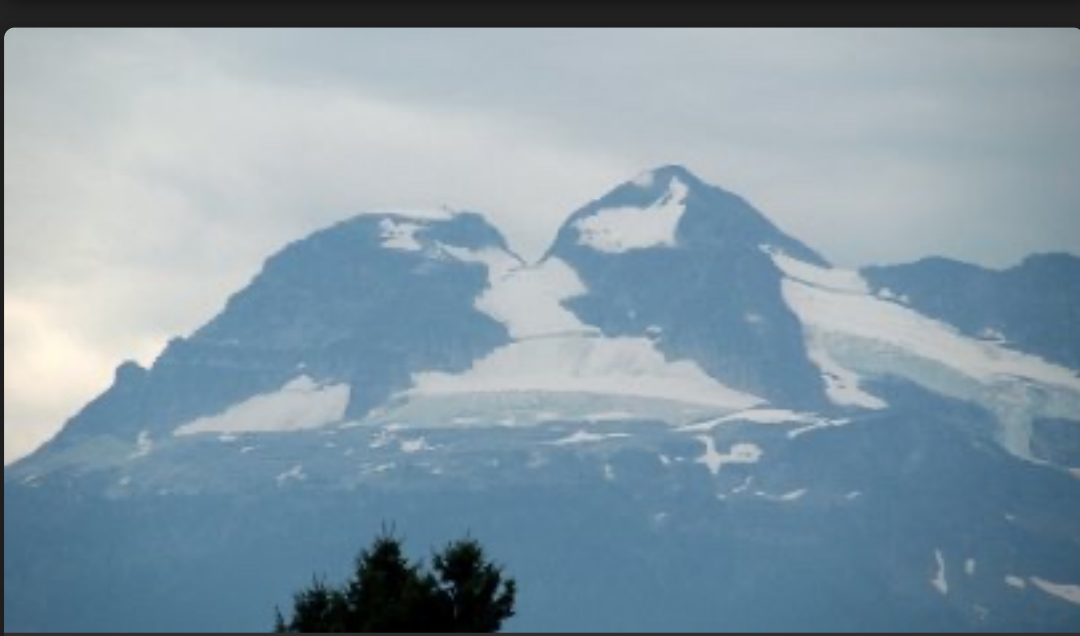
Near Revelstoke



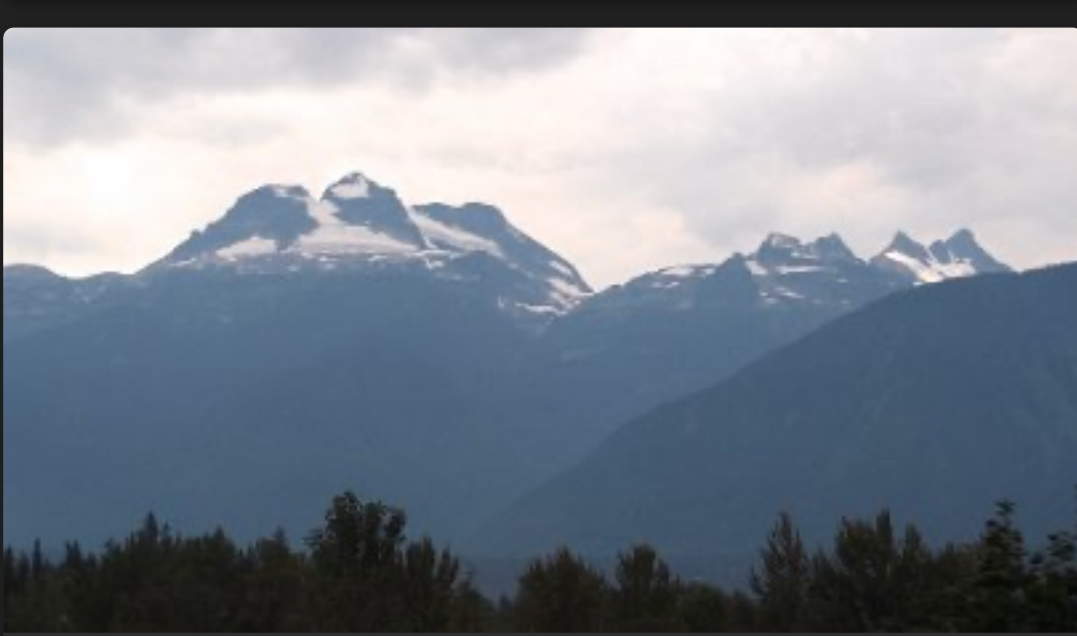
Near Revelstoke



Three Valley Gap Resort near Revelstoke



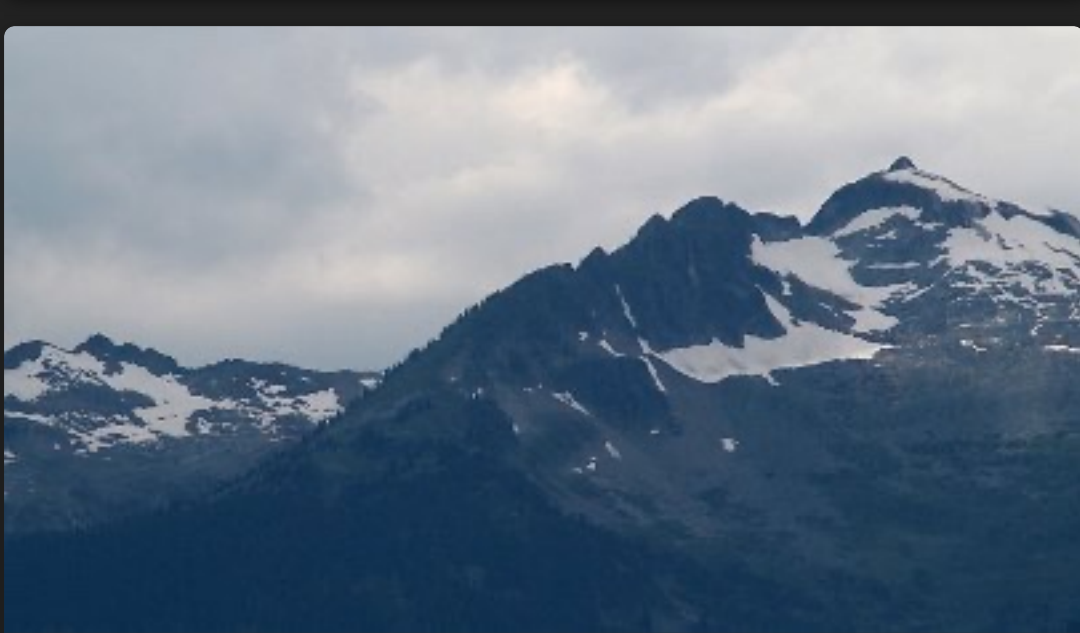
Mountain View near Revelstoke



Mountain View near Revelstoke



Landslides near Revelstoke



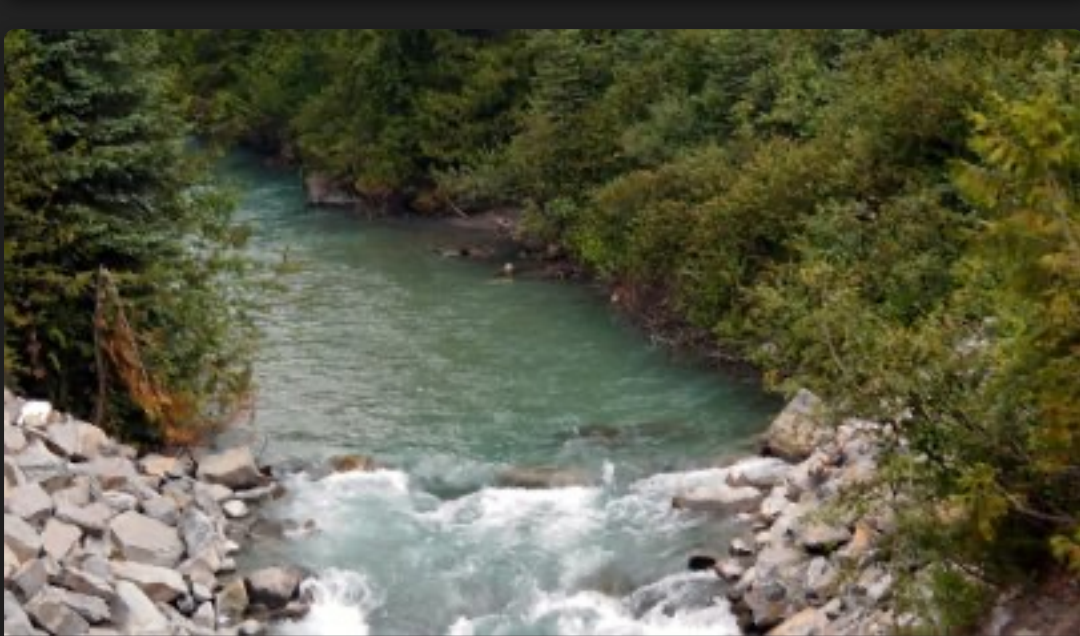
Mountain View near Revelstoke



Rocky Mountaineer at Roger's Pass



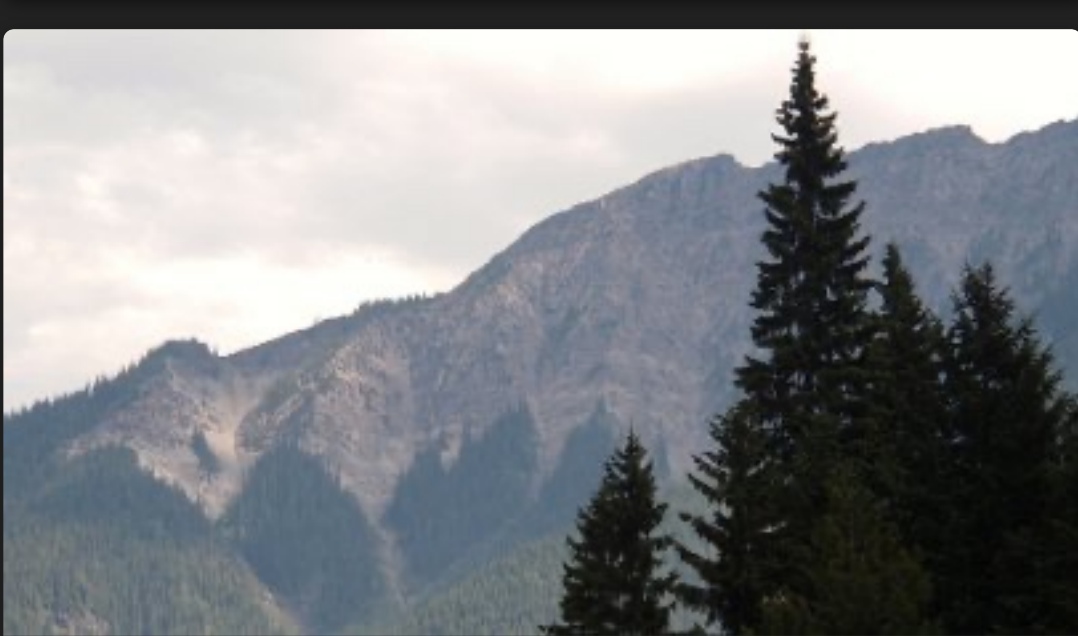
Roger's Pass



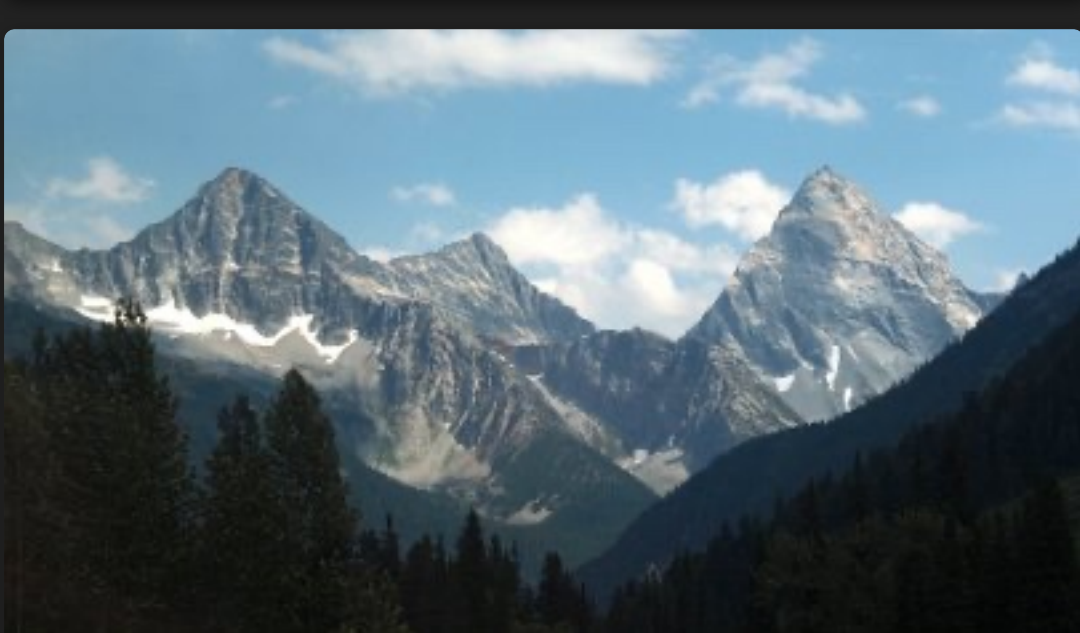
Roger's Pass



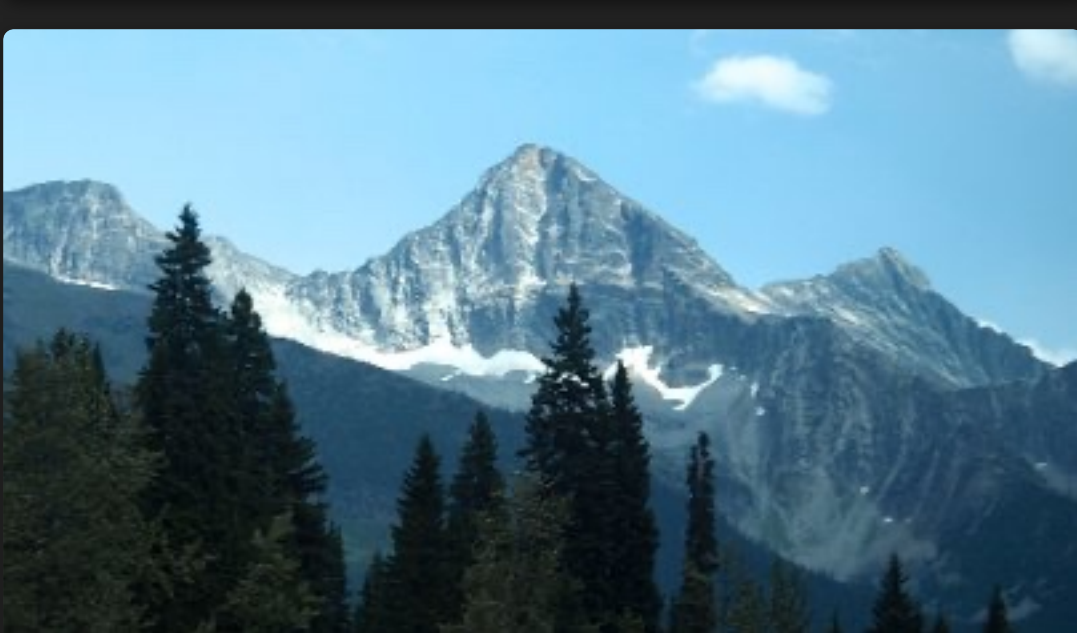
Rocky Mountaineer at Roger's Pass



Mountain View at Roger's Pass



Mt Sir Donald from Roger's Pass



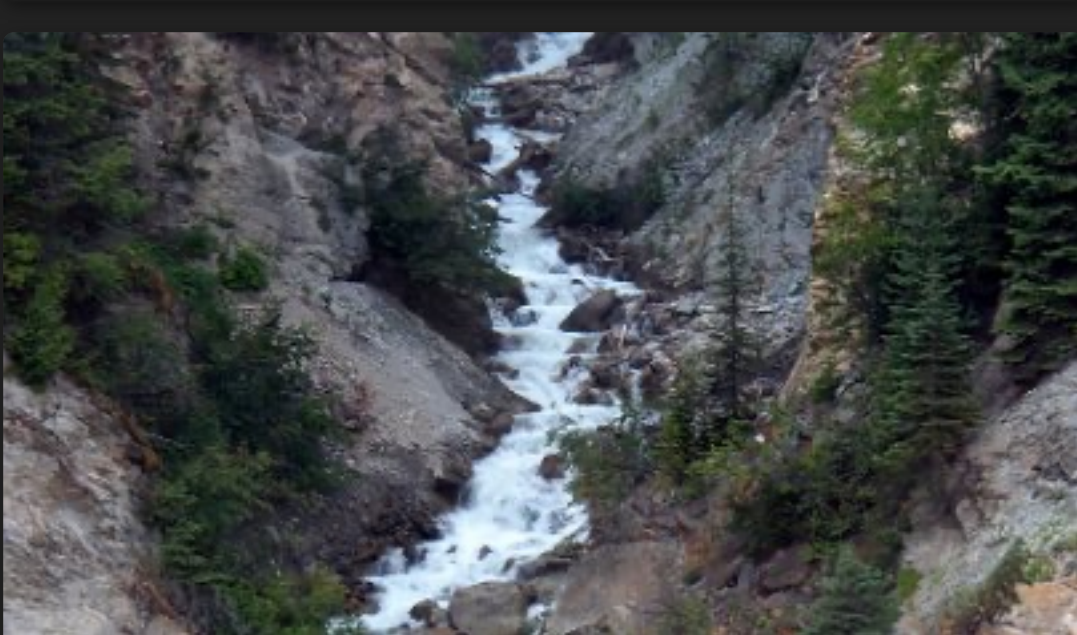
Mountain View at Roger's Pass



Forest Fires at Roger's Pass



Creek at Roger's Pass



Stoney Creek at Roger's Pass



Forest Fires at Roger's Pass



Near Donald



Landslide near Kicking Horse Canyon



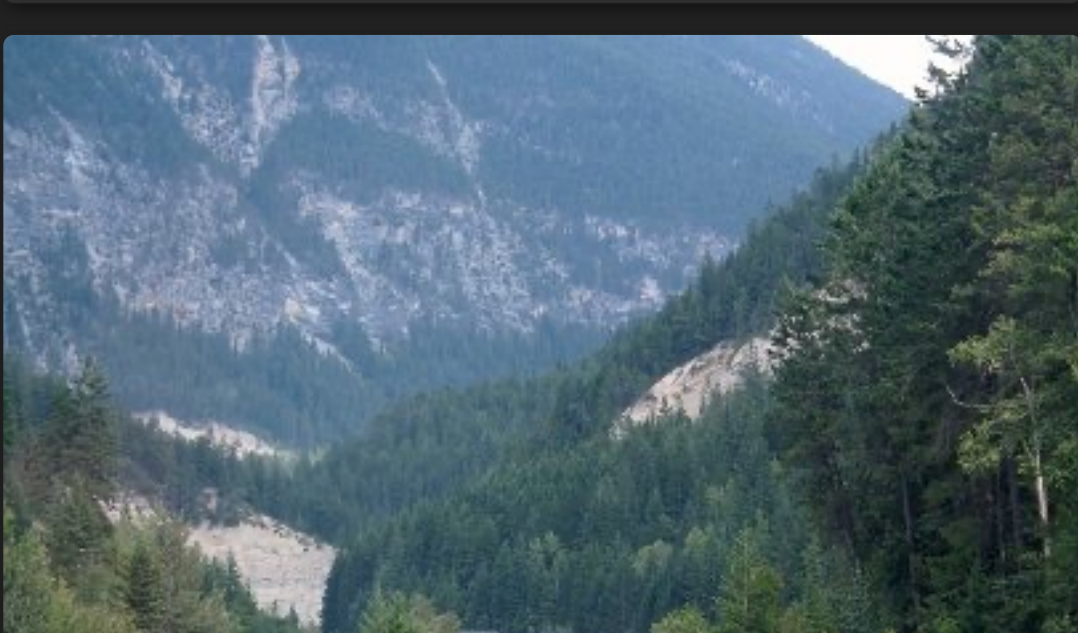
Rocky Mountaineer in Kicking Horse Canyon



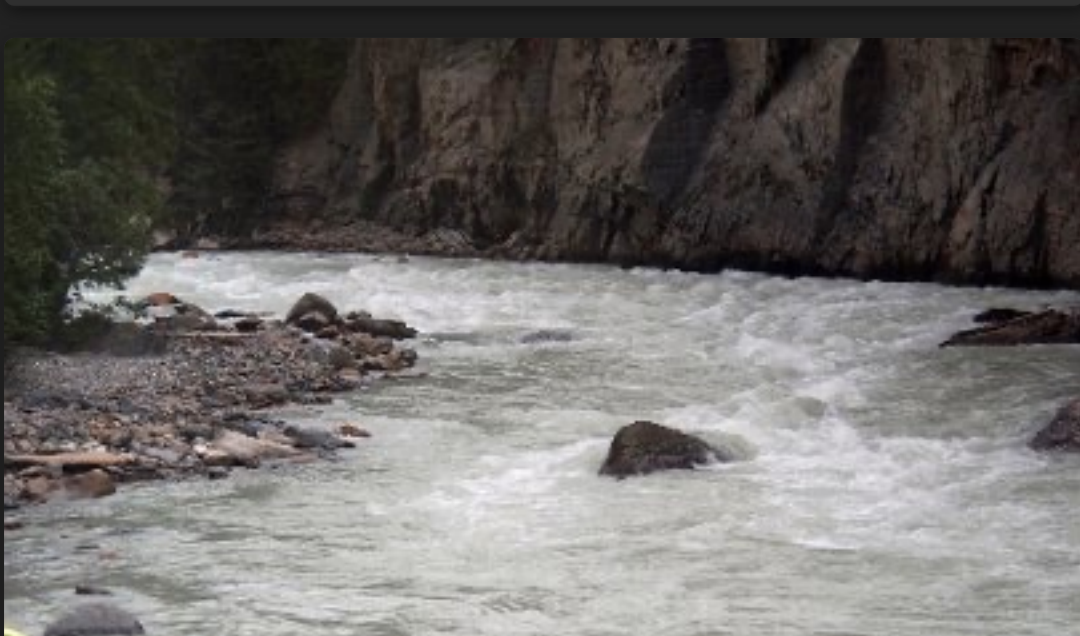
View from Kicking Horse River



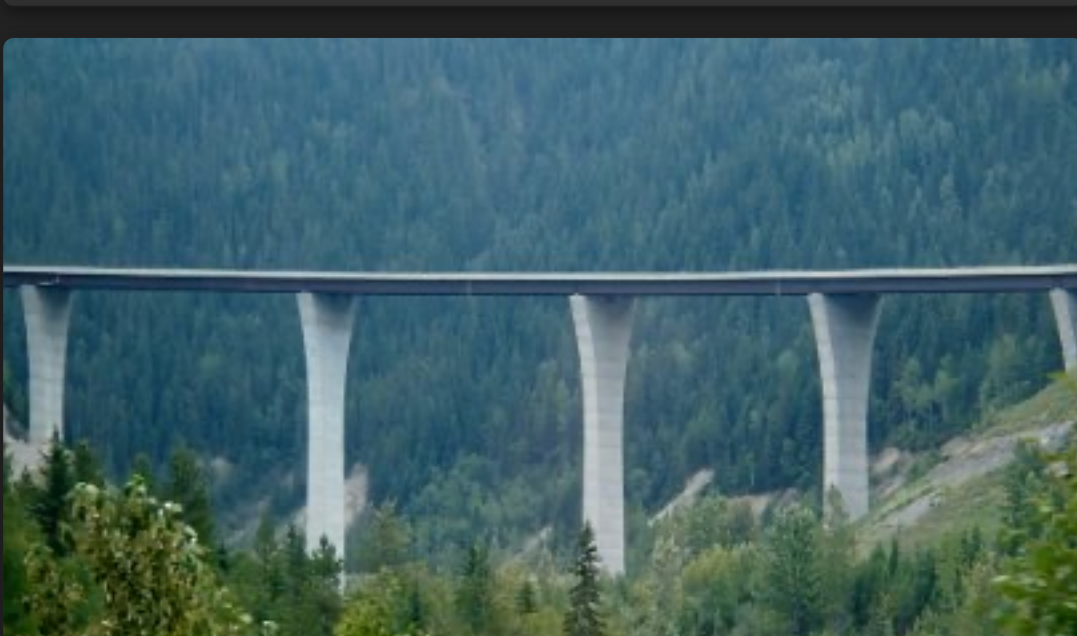
View from Kicking Horse River



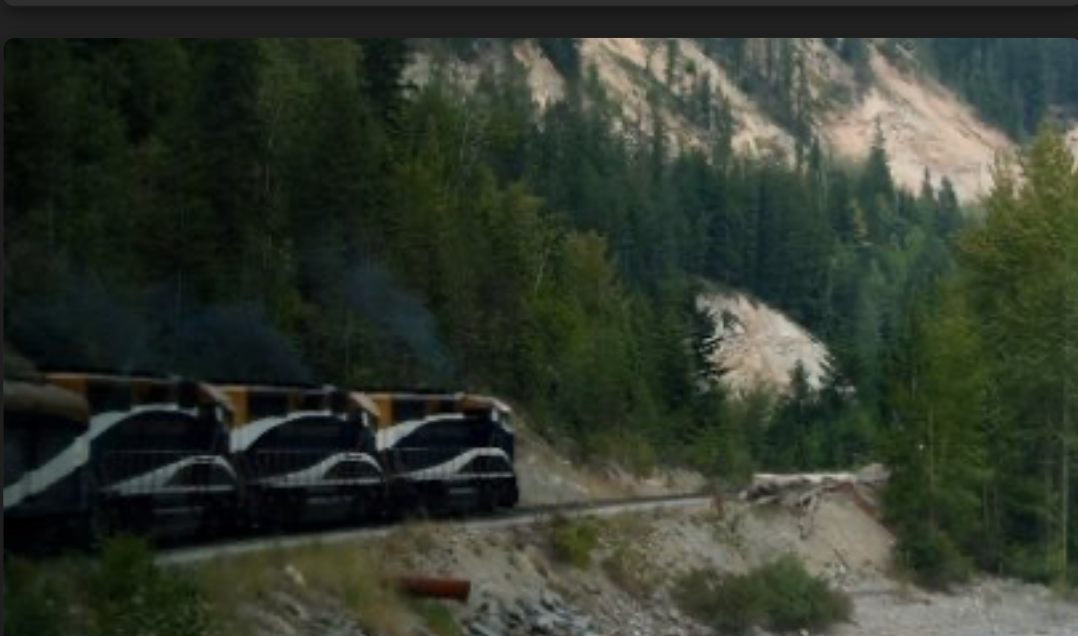
Kicking Horse River



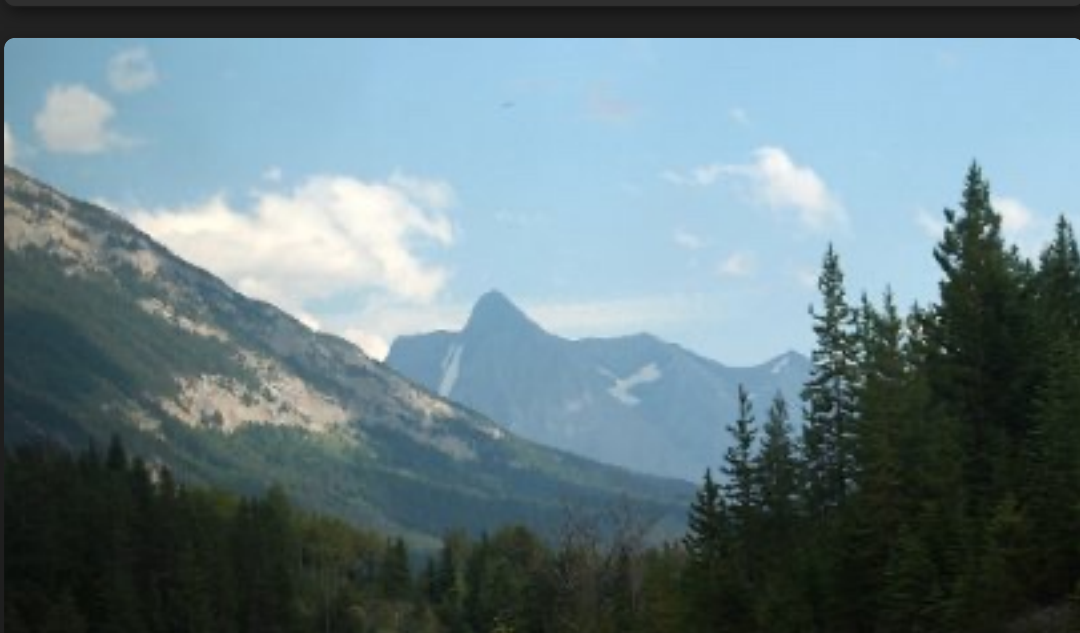
Kicking Horse River



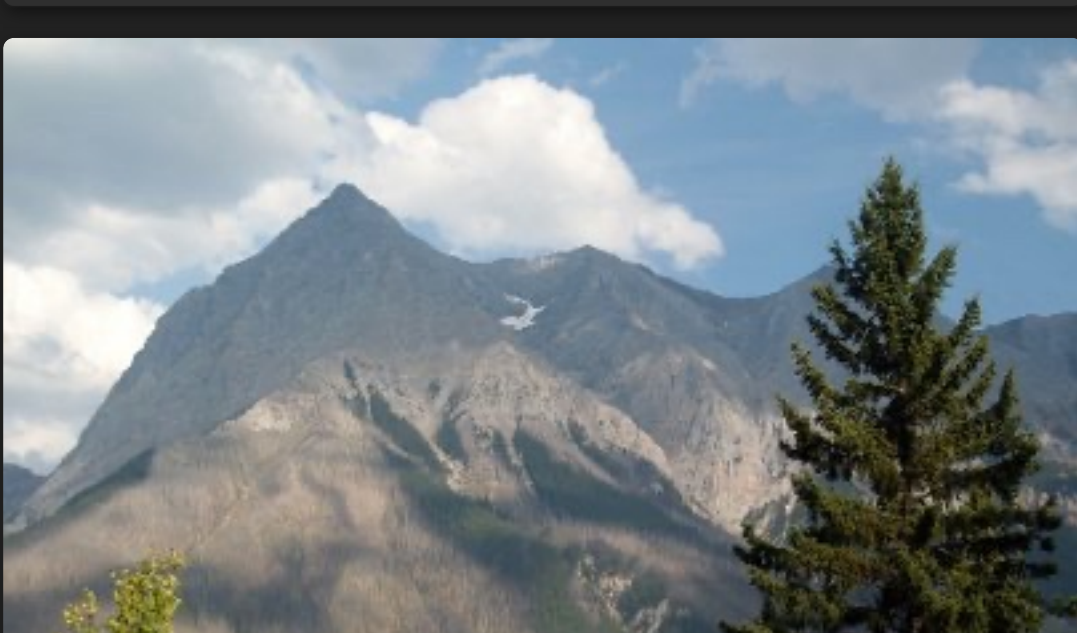
New Bridge near Golden over Kicking Horse River



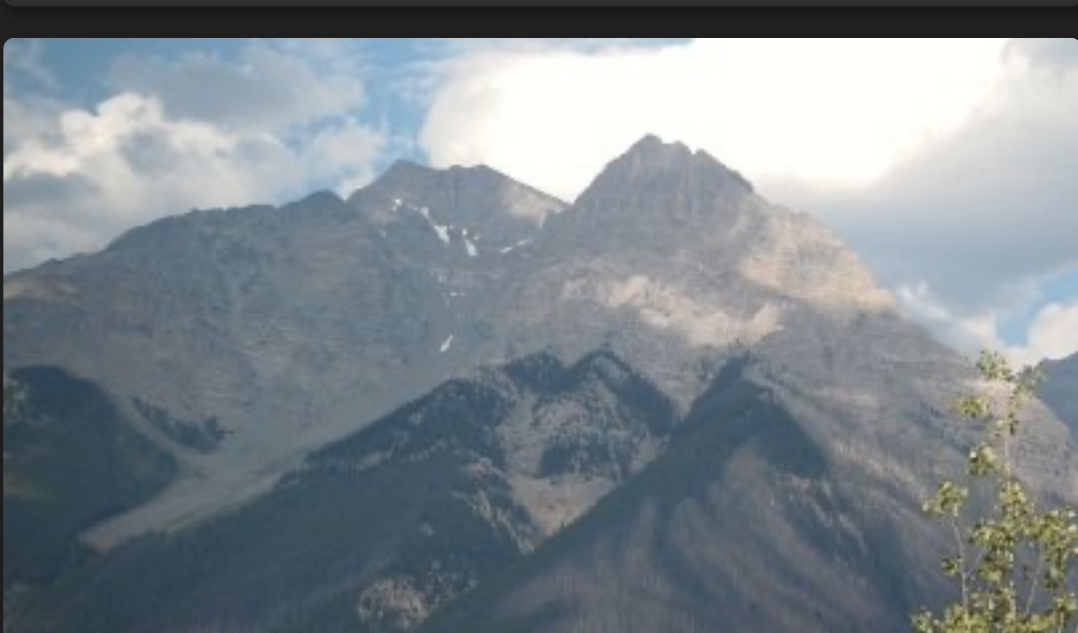
Rocky Mountaineer beside Kicking Horse River



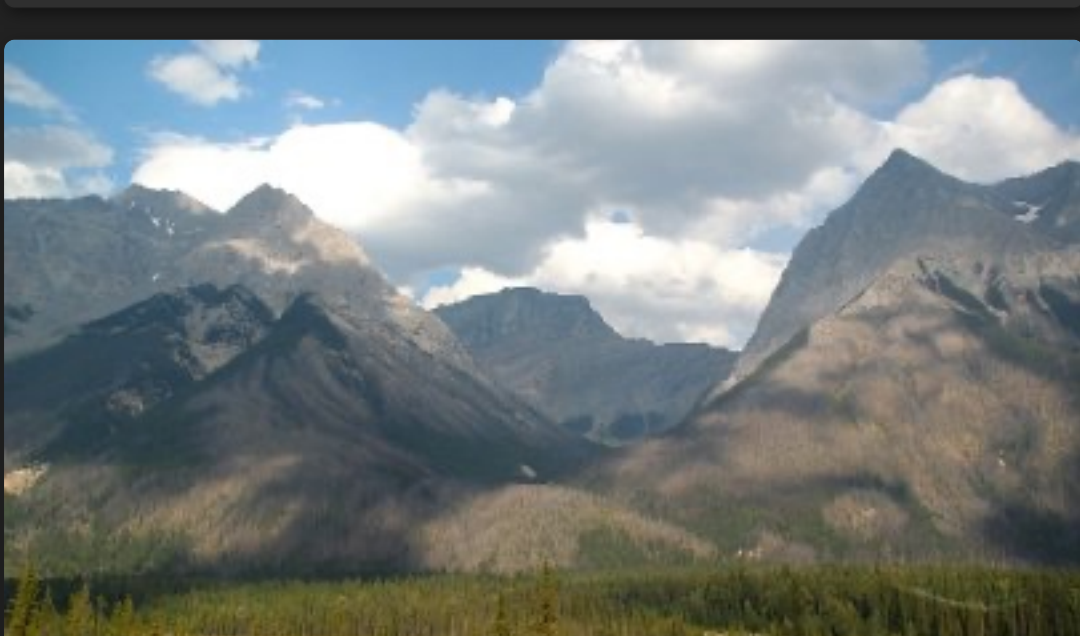
Mt Vaux from Kicking Horse River



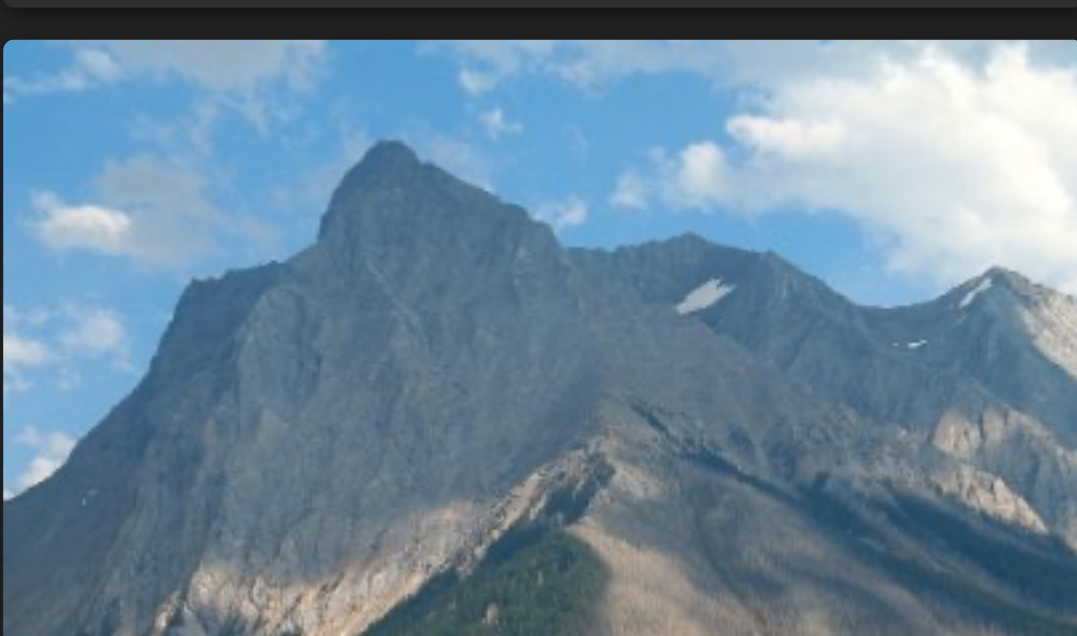
View from Kicking Horse River



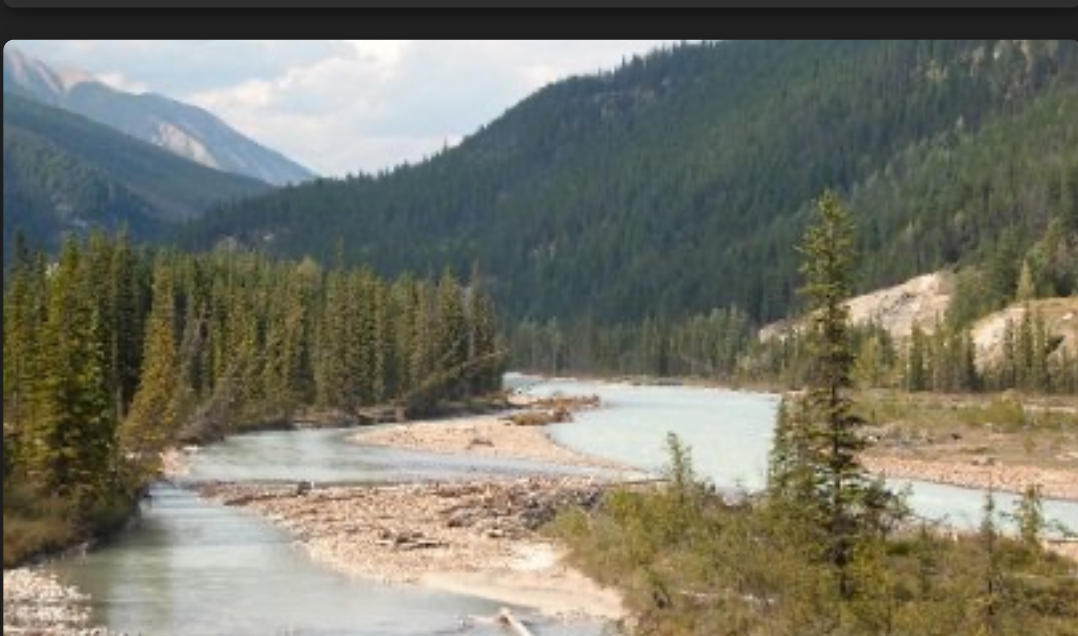
View from Kicking Horse River



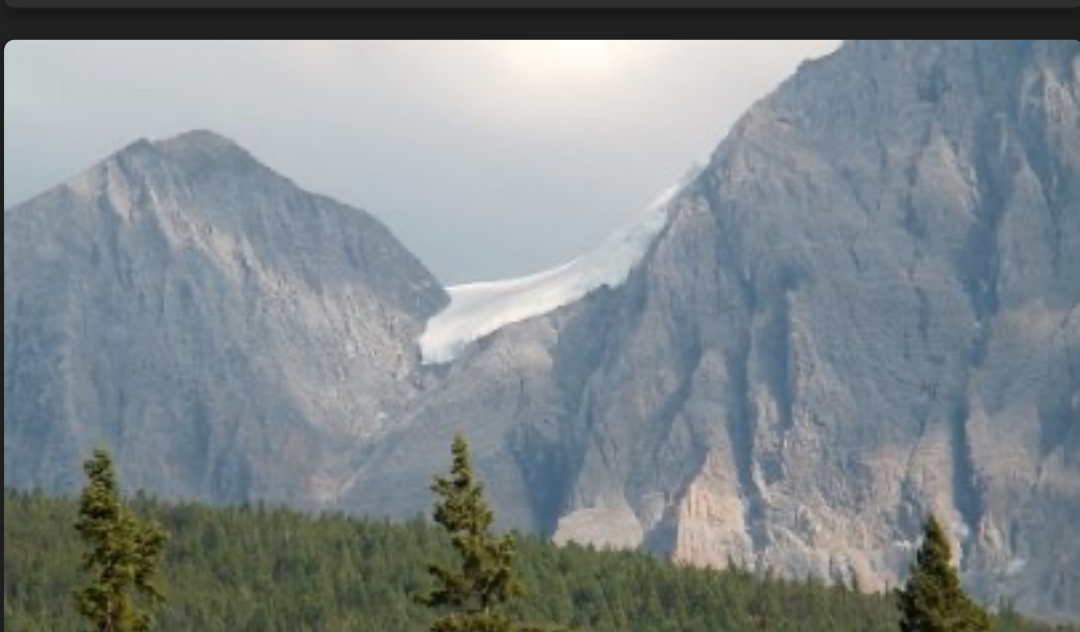
View from Kicking Horse River



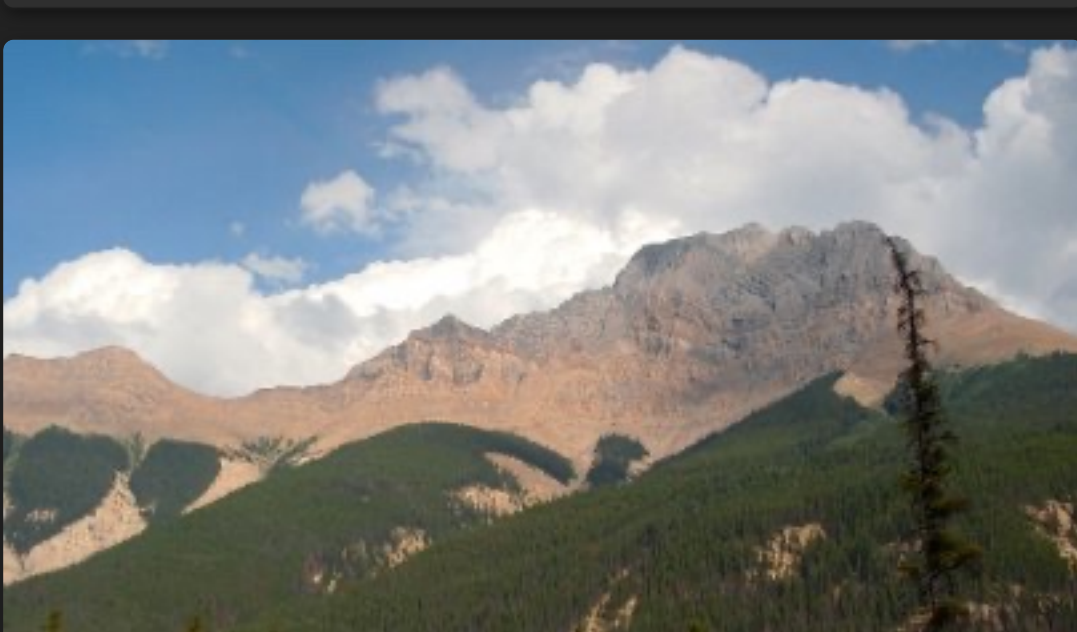
Mt Vaux from Kicking Horse River



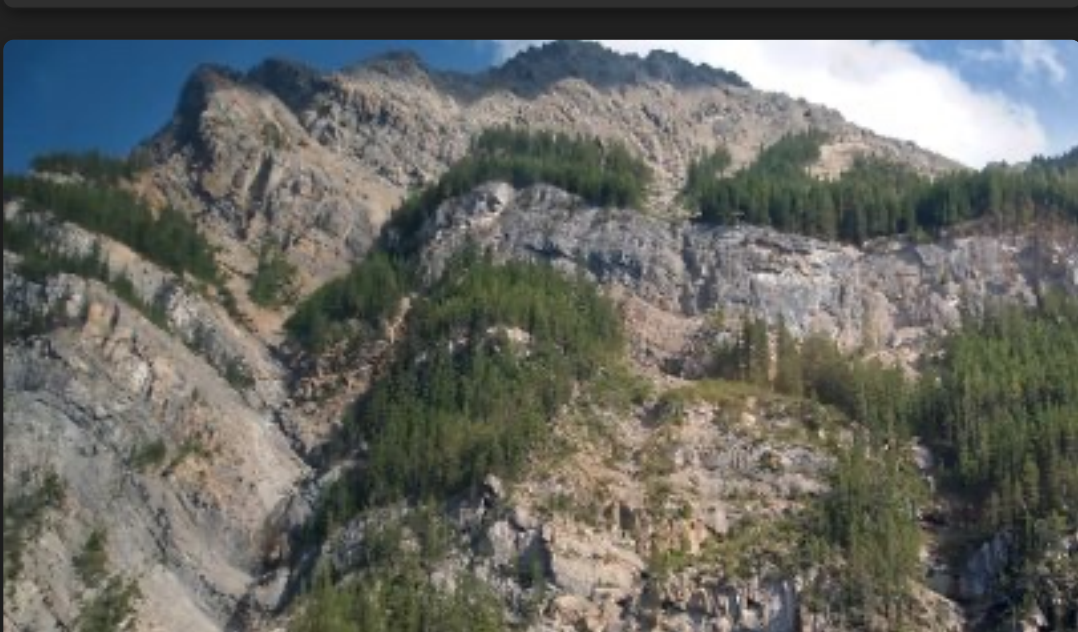
Kicking Horse River



Mt Vaux Glacier



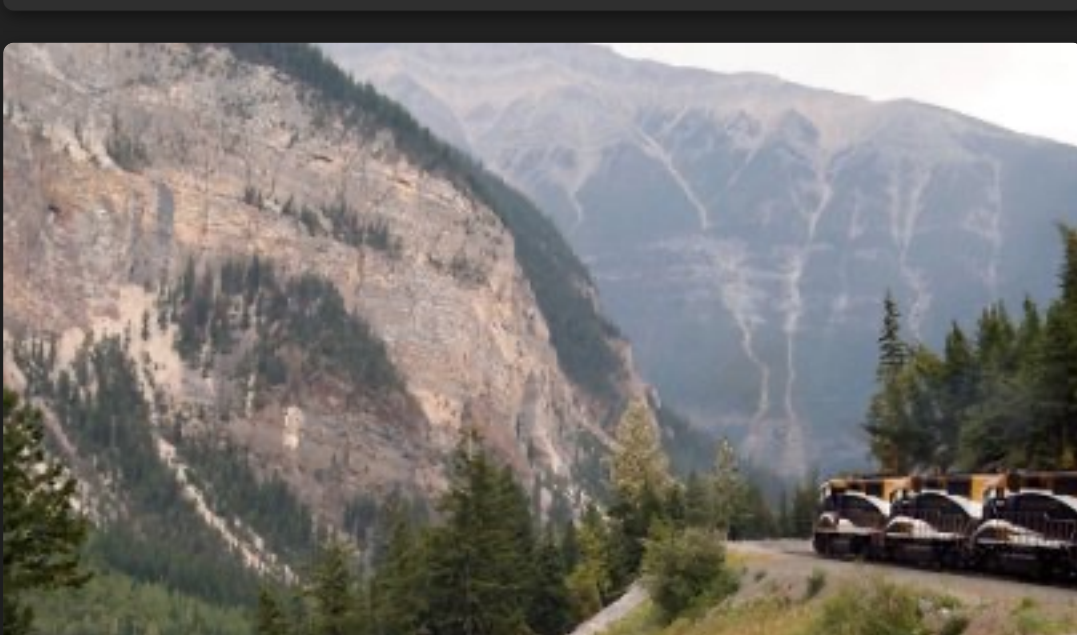
Mt Hurd



Mt Stephen near Field



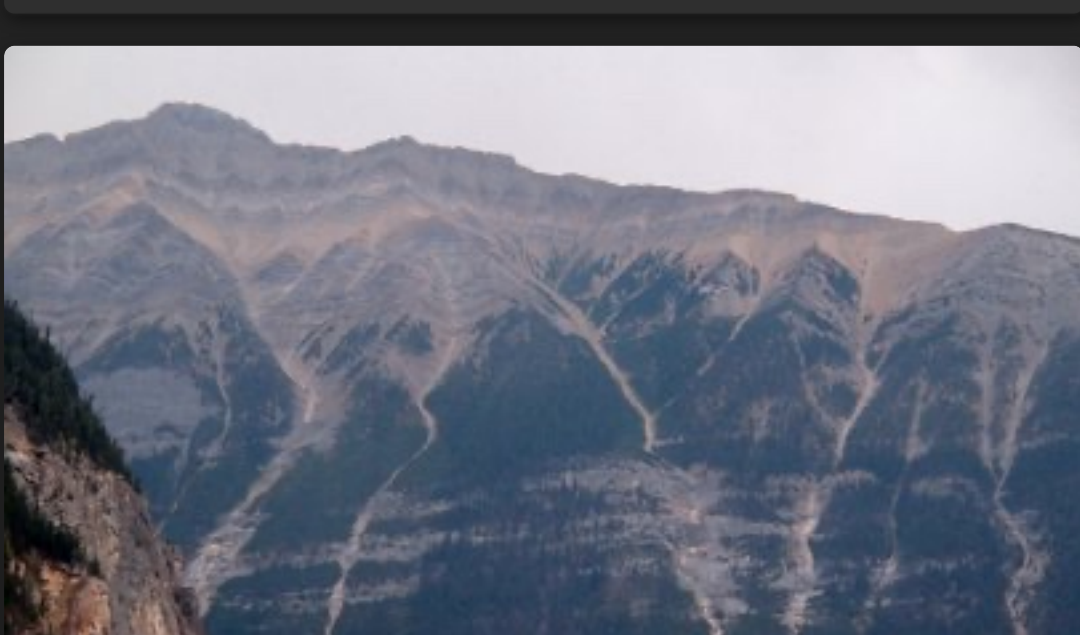
Mt Stephen near Field



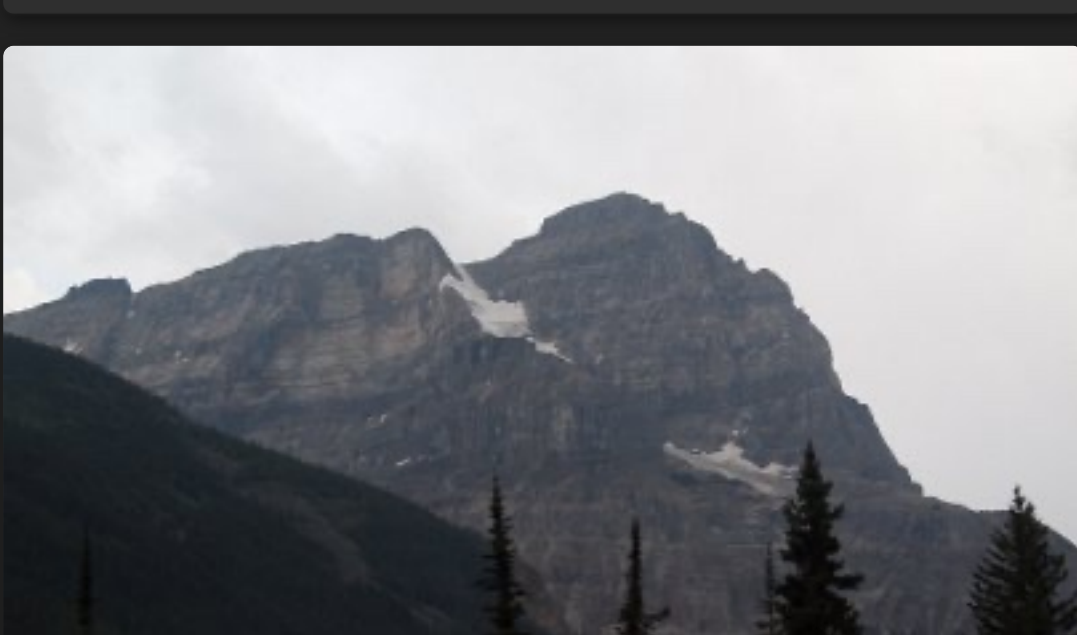
Rocky Mountaineer and Bow River View



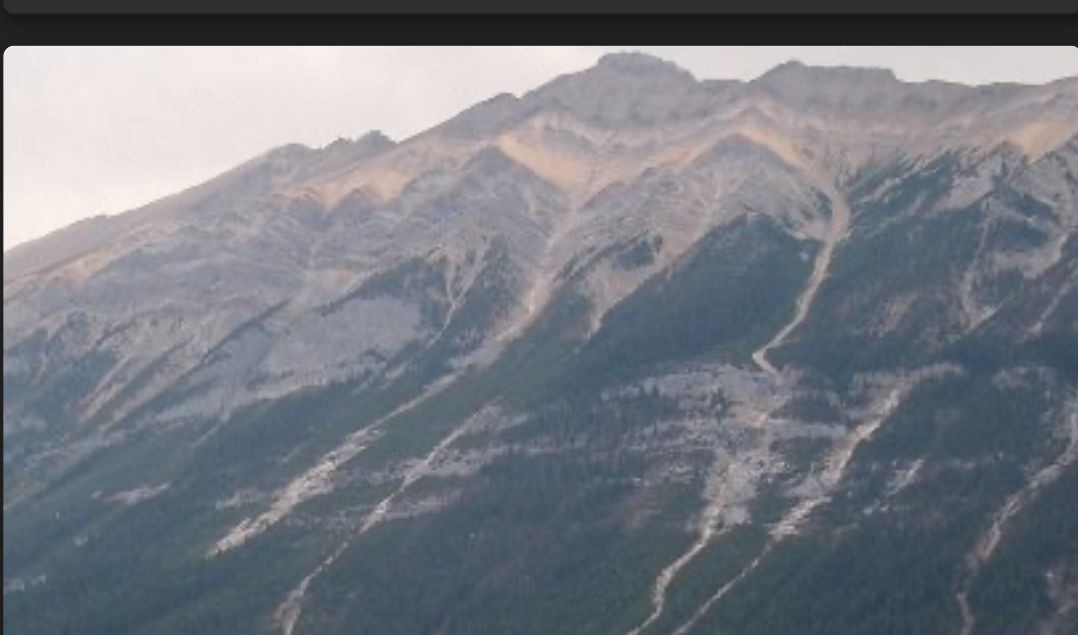
Bow River View



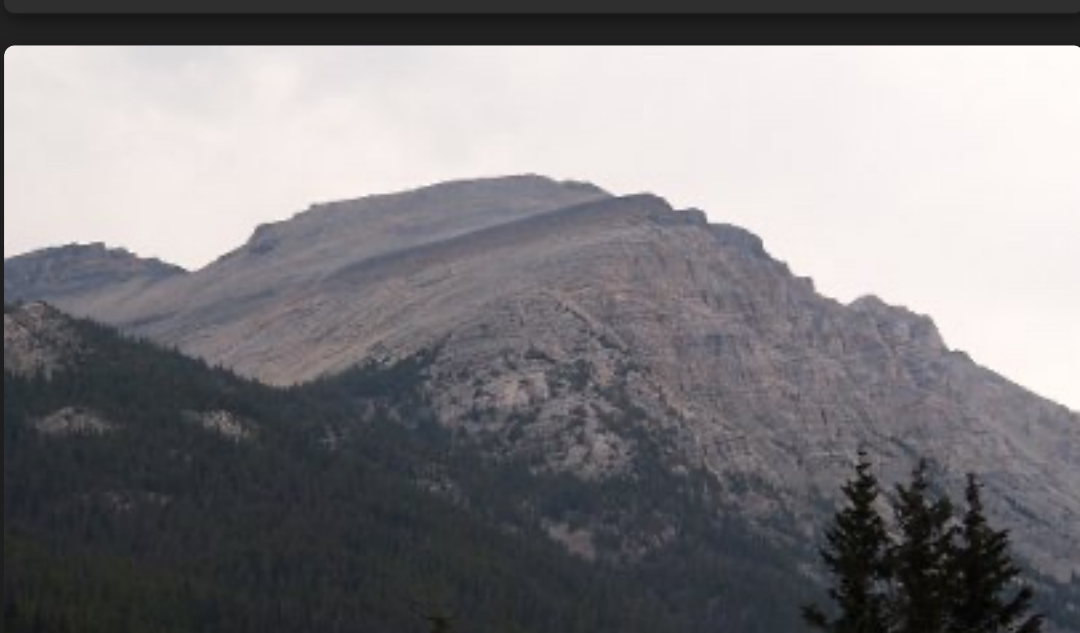
Bow River View



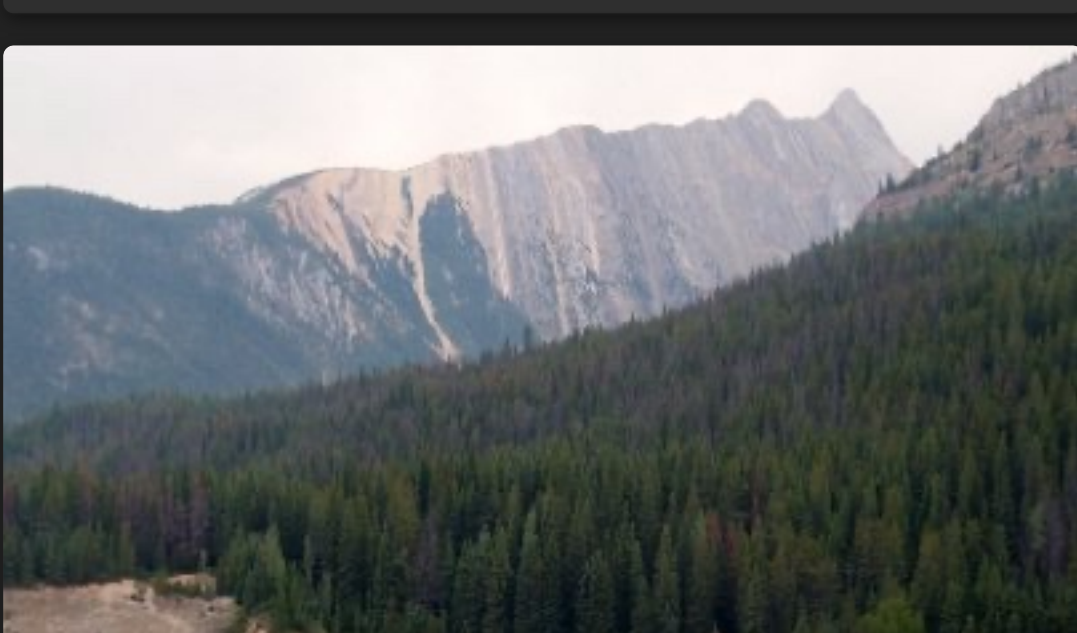
Bow River View



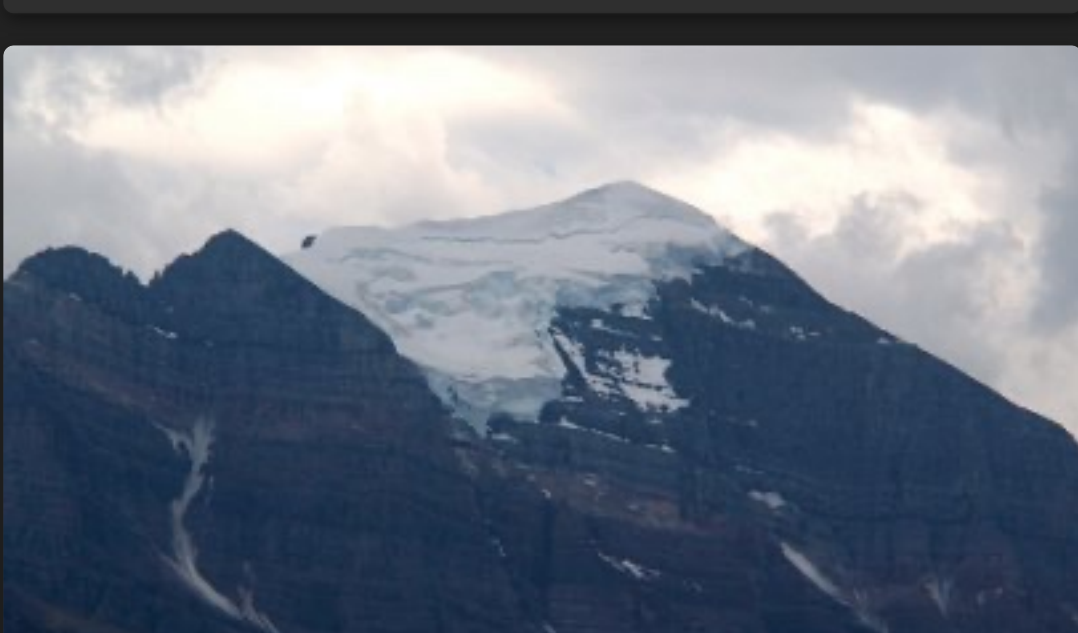
Bow River View



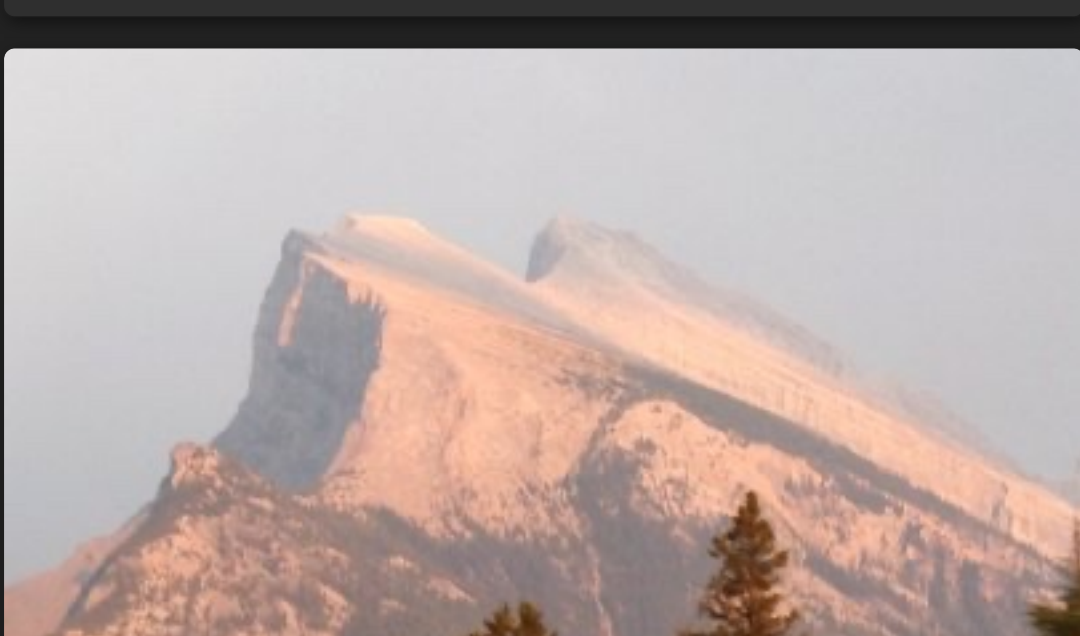
Bow River View



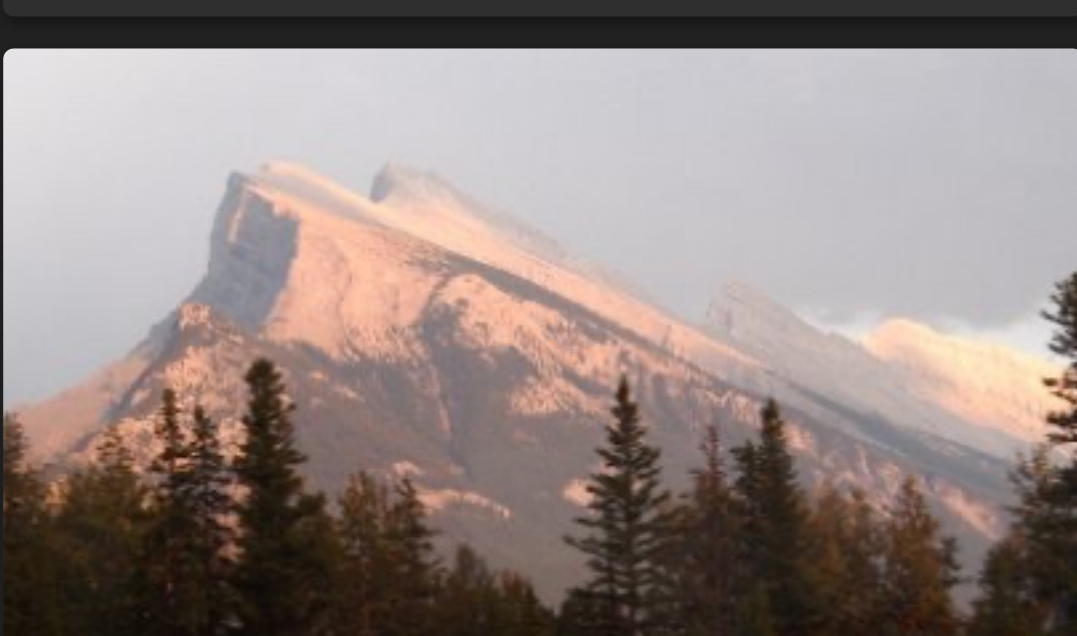
Bow River View



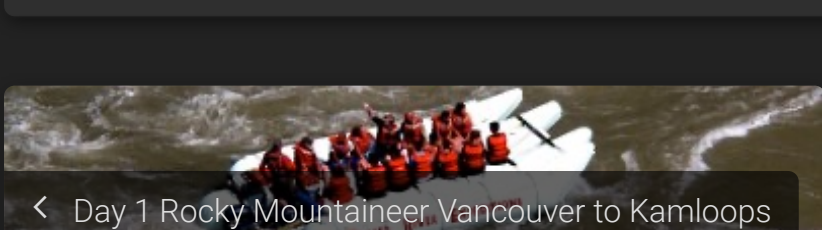
Bow River View



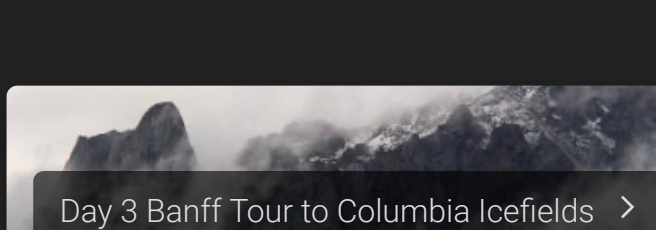
Mt Rundle near Banff



Mt Rundle near Banff



Day 1 Rocky Mountaineer Vancouver to Kamloops



Day 3 Banff Tour to Columbia Icefields

↶

Day 3 Banff Tour to Columbia Icefields

While in Banff we took a small bus tour north on the Icefields Parkway to see the Columbia Icefields. Lake Louise was very picturesque and we saw many more beautiful sights from the road. Our transport on to the Athabasca Glacier was a Columbia Icefield Explorer, large buses which are able to negotiate very steep gradients and can move around on the ice. The weather wasn't the best but probably very representative of the normal climate. On the way back to Banff we saw some black bears eating near to the Parkway.



Misty Mountains on Icefields Parkway



Misty Mountains on Icefields Parkway



Castle Mountain



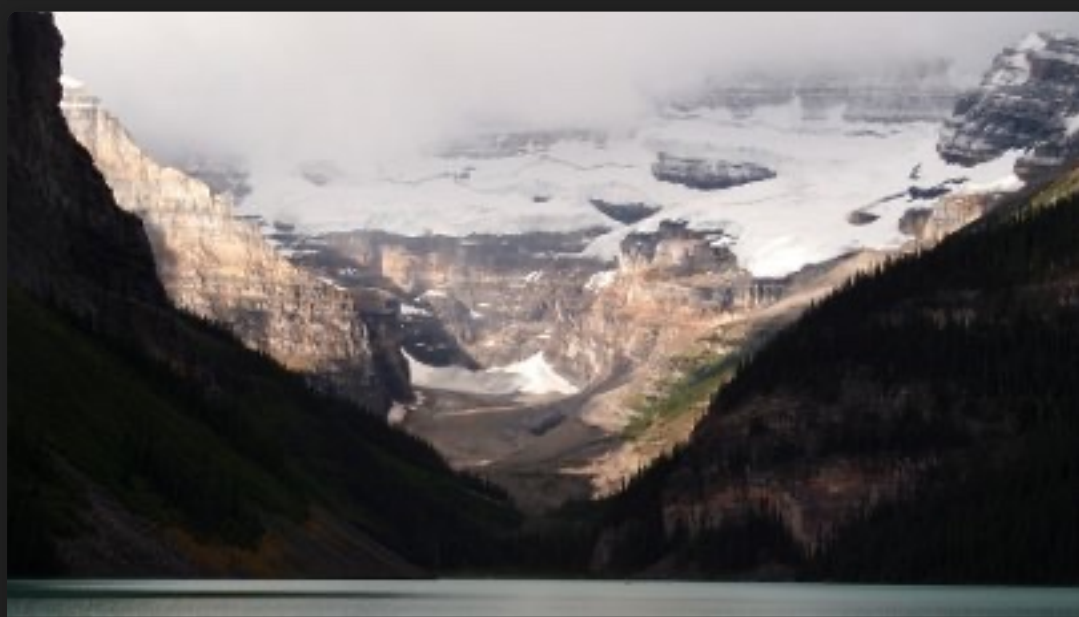
Lake Louise Chateau



Lake Louise



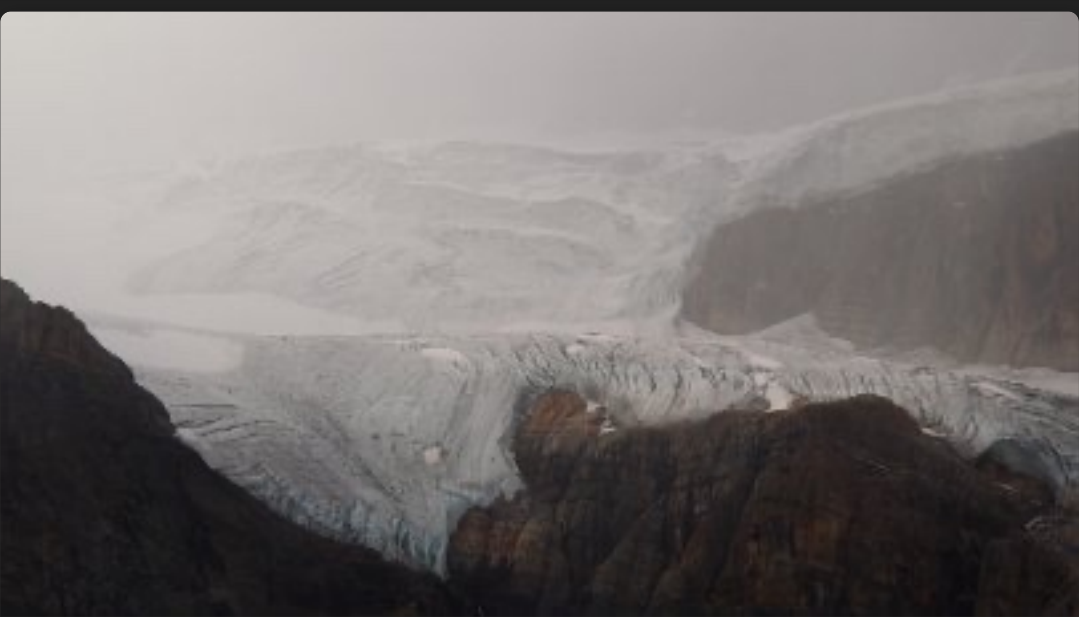
Head of Lake Louise



Lake Louise



Head of Lake Louise



Crowfoot Glacier



Bow Glacier and Waterfall



Bow Lake and Glacier



View from Saskatchewan Crossing Resort



View from Saskatchewan Crossing Resort



View from Saskatchewan Crossing Resort



Near Cirrus Mountain Viewpoint



Near Cirrus Mountain Viewpoint



Spider at Cirrus Mountain Viewpoint



View from Big Bend



Mt Andromeda



Mt Athabasca



Athabasca Glacier and Columbia Icefield



Columbia Icefield Explorer



Mt Kitchener



Solo Glacier Walker on Athabasca Glacier



Anne with Columbia Icefield Explorers on the Athabasca Glacier



Meltwater Channels on the Athabasca Glacier



Meltwater Channels on the Athabasca Glacier



Columbia Icefield Explorer leaving the Athabasca Glacier



Mt Athabasca



Weather on the Athabasca Glacier



Columbia Icefield Explorers on the Athabasca Glacier



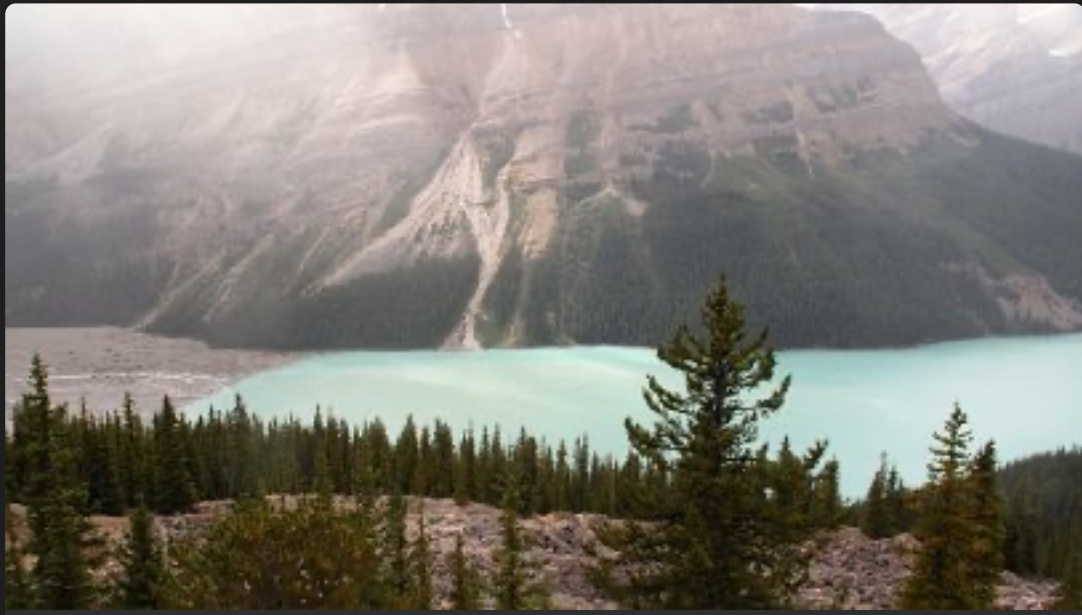
Mt Andromeda



Weather on the Athabasca Glacier



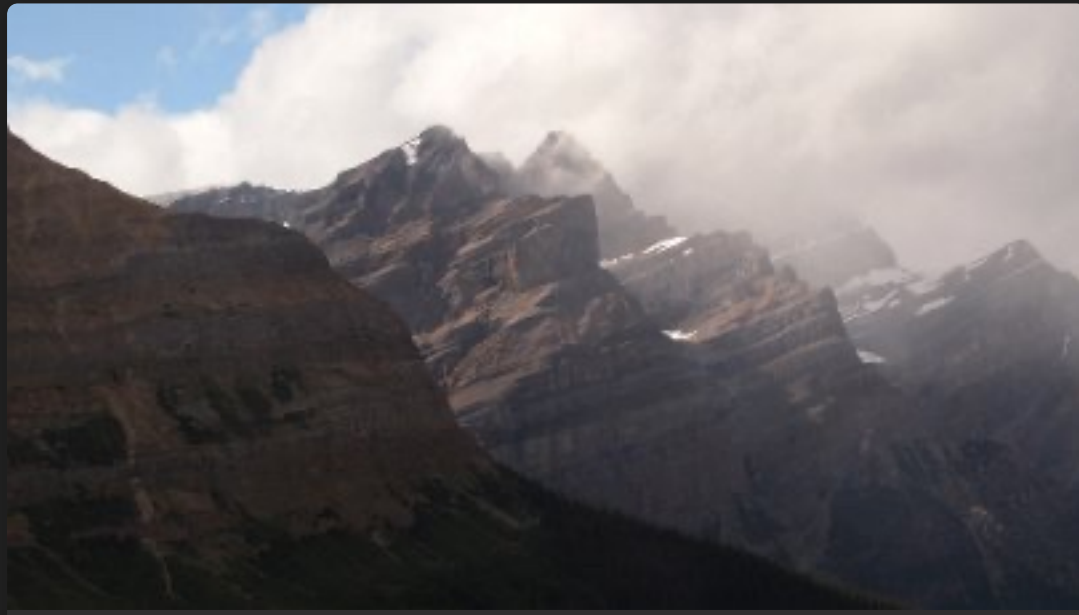
View from Bow Pass Viewpoint



Peyto Lake from Bow Pass Viewpoint



Peyto Lake from Bow Pass Viewpoint



Peyto Lake from Bow Pass Viewpoint



Peyto Lake from Bow Pass Viewpoint



Peyto Lake from Bow Pass Viewpoint



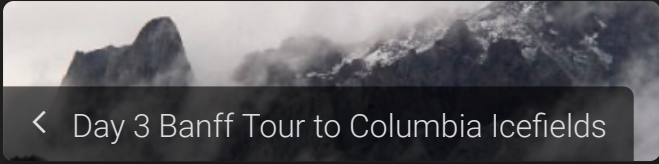
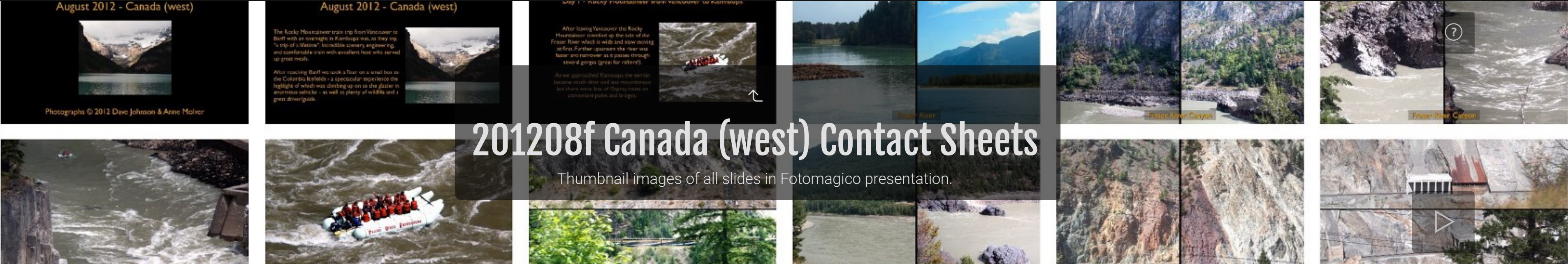
Black Bear on Icefields Parkway



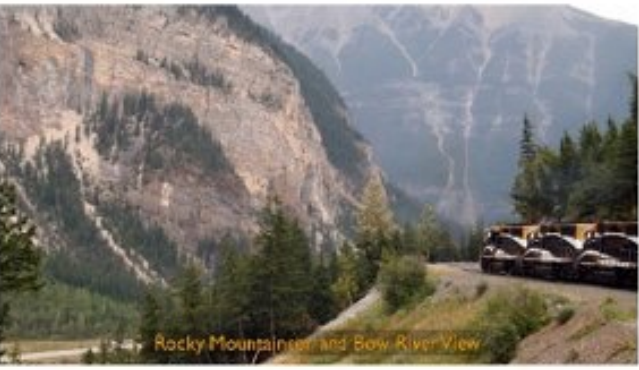
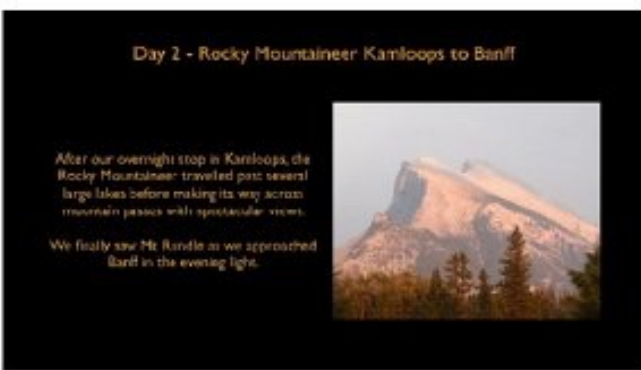
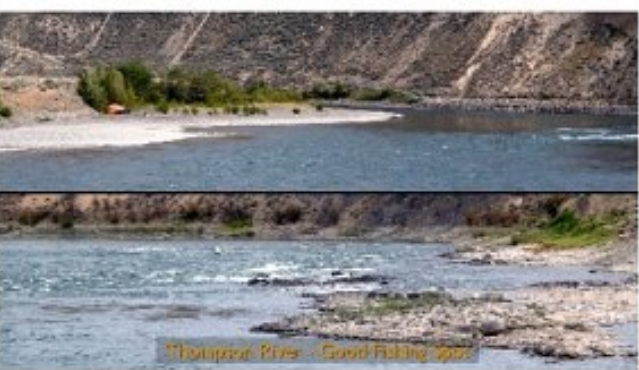
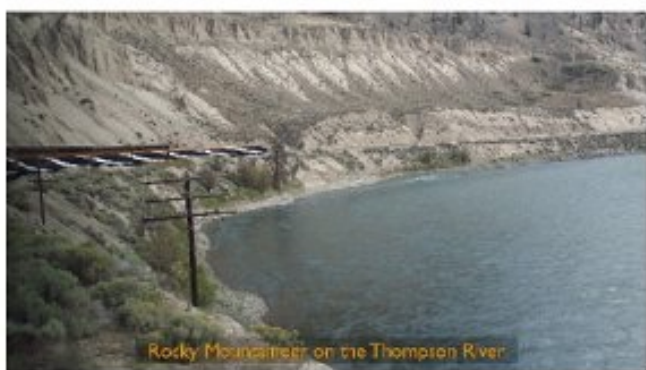
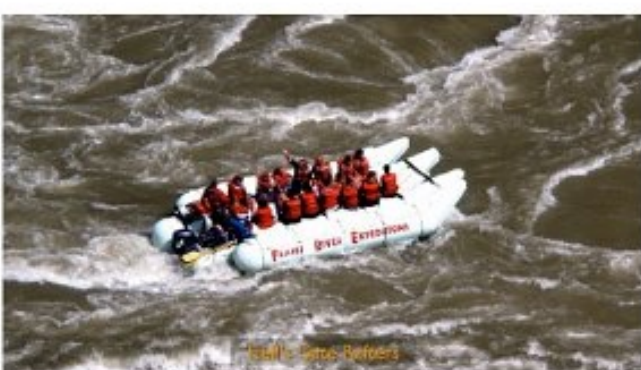
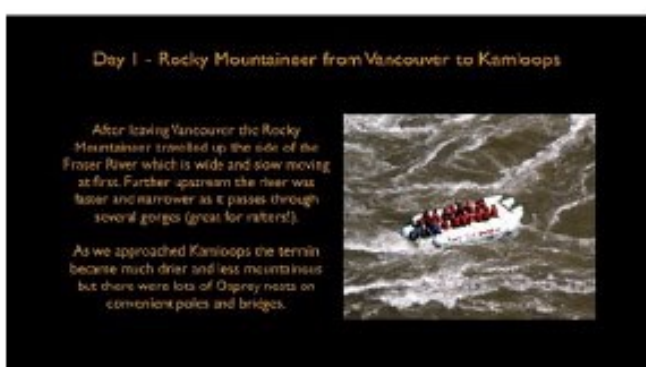
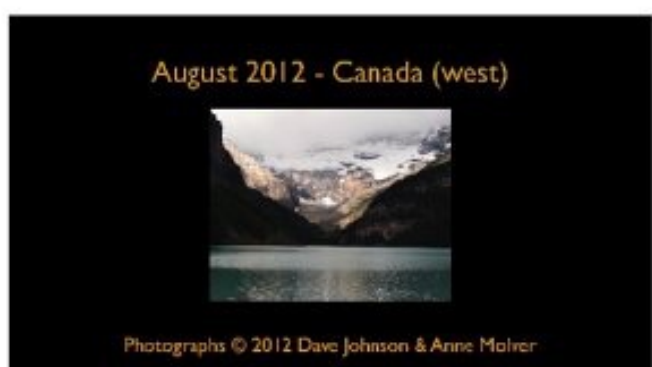
Black Bear on Icefields Parkway



Black Bear on Icefields Parkway



201208f Canada (west) Contact Sheet




Day 3 - Banff Tour to Columbia Icefields

While in Banff we took a small bus tour north on the Icefields Parkway to see the Columbia Icefields.

Lake Louise was very picturesque and we saw many more beautiful sights from the road.

Our transport on to the Athabasca Glacier was a Columbia Icefield Explorer, large buses which are able to negotiate very steep gradients and can move around on the ice. The weather wasn't the best but probably very representative of the normal climate.

On the way back to Banff we saw some stark forests along the Parkway.



That's all folks !!



The cabin-in-a-frame trip on the Rocky Mountaineer lived up to its wonderful reputation - very comfortable, good views, scenic scenery and great photo ops (when the cross wasn't in the way).

Our one-day Columbia Icefield excursion from Banff was really worth the early morning start.

Many thanks also to the team at FotoMagico



Photo with FotoMagico