

Twill Cotton "CHIEF C" Coverall - Ameriza



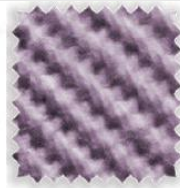
Item No: B0202

Colour:

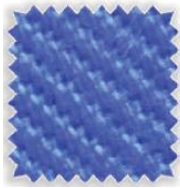
Grey, Petrol Blue, Navy Blue, Khaki



Navy Blue



Grey



Petrol Blue



Khaki

Sizes:

Small — 5XL

Description

100% twill cotton coveralls.

Features

2 inches 6 sides reflective tapes. Adjustable Velcro cuff. 2-way HD zipper with metal snap. Elasticated waist band for extra comfort. 3 chest pockets with Velcro flap. 1 pen pocket on left arm, 2 front swing pockets, 2 back pockets in trouser with button.

Sanforised, Pre-shrunk & mercerized. Fabric Weight: 195gsm.

Application

Mechanical workshop, construction sites, crane, forklift. Protection from UV light. Welding & grinding works.

Certificates CE EN Cat. I

| Packet Packaging | Carton Packaging | Origin | Carton Net Weight | Carton Gross Weight | Carton Dimensions | CBM per Carton | HS Code |
|------------------|------------------|--------|-------------------|---------------------|-------------------------|----------------|----------|
| 1 Piece | 25 Pieces | China | 19kgs | 20.38kgs | L*W*H 51cmX39cmX33cm | 0.0653 | 62113290 |

CHIEF C - Design & Specifications

| Size | S | M | L | XL | 2XL | 3XL | 4XL | 5XL |
|----------------------|-------|-------|-------|-------|-------|-------|-------|-------|
| Chest (inch) | 45-46 | 47-48 | 49-50 | 51-53 | 54-55 | 56-57 | 58-59 | 60-61 |
| Waist (inch) | 40-42 | 43-44 | 45-46 | 47-48 | 49-50 | 51-52 | 53-54 | 55-56 |
| Sleeve Length (inch) | 28.9 | 29.3 | 29.7 | 30.1 | 30.5 | 30.9 | 31.3 | 31.7 |
| Full Length (inch) | 62 | 62.4 | 63.3 | 64 | 65.2 | 65.6 | 66.7 | 67.9 |

