



B360°

360 Degrees of Construction Solutions

WWW.BU-360.COM

WE ARE Build 360° CONTRACTING COMPANY

We are a company specialized in the field of Fitout . Our expertise lies in the planning, design, construction, and maintenance of various physical structures and systems.

The logo features the letters 'B360°' in a bold, 3D font. The 'B' is silver with a brushed metal texture, while the '360°' is a vibrant red. The characters are set against a dark blue-grey background with a subtle grid pattern of thin white lines. The lighting creates a sense of depth and shadow beneath the letters.



VISION & MISSION



VISION & MISSION

Our vision Our vision is to create a non-stop solution provider for Fitout, project management ,and renovation services for all types of constructions .

■ QUALITY IS OUR CULTURE

Our ultimate goal is to ensure the services we provide are up to the best possible standards, committed to strive their very best to meet, and to always exceed client expectations by actively communicating their thoughts and ideas.

SAFETY IS OUR BEHAVIOR.

■ COMMITMENT IS OUR EXCELLENCE



WHY CHOOSE US

360°
mb

Well-seasoned, highly experienced and most respected professionals in each of their respective craft. They oversee the activities of the company. They are our company's decision-making body, which is in charge of all affairs as well as the representation of the company to potential clients and business partners.

1

*EFFICIENCY AND ORGANIZATIONAL SPIRIT
The inclination towards team work is the competitive advantage that allows **B360** to satisfy customers' request and to exceed the offer of more and more qualified competitors.*

2

*The lack of hierarchical barriers, the sharing of information and the taking on of men's responsibility who feel an integral part of the enterprise allow us to quickly react to the market boost and to renew the quality of the offered products and services, since the total satisfaction of commercial partners is the target that measures **B360** intelligences, creativity and the team spirit every day.*

3

*SUSTAINABILITY CERTAINTYQUALITY
B360 partners acquired the prestigious certificate that embodies all the specifications for quality, environment and safety. The production of these partners contributes to the preservation of the environment and the Lead Certification Project through the use of recycled materials, recyclability of the product, and low VOC emissions*



OUR TEAM

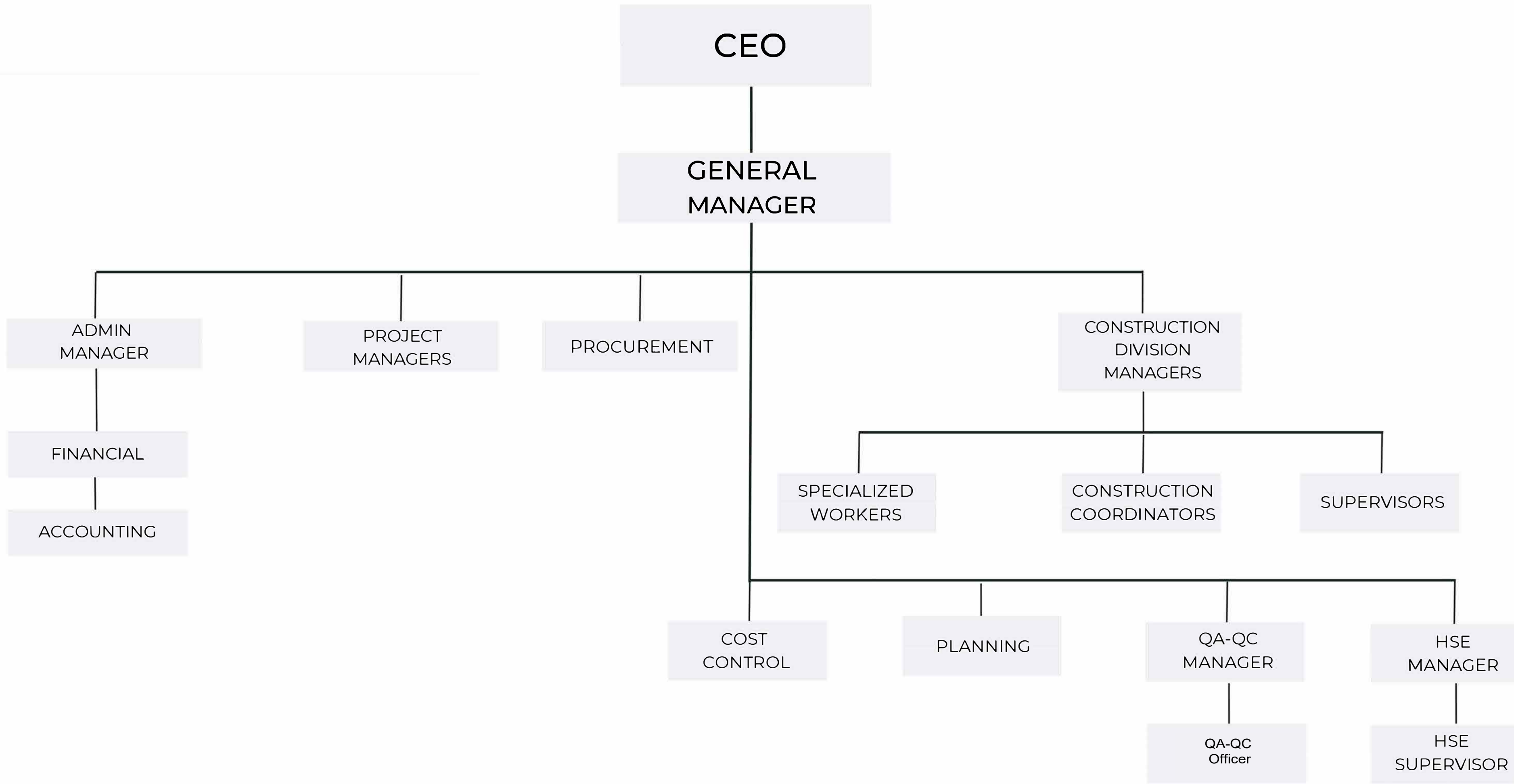
360°
m

MEET OUR TEAM

Our company specializes in fit-out and finishing services, delivering high-quality interior solutions for commercial, residential, and hospitality spaces. We offer a comprehensive range of services including interior design, space planning, partitioning, flooring, ceiling systems, wall finishes, joinery, and MEP (mechanical, electrical, and plumbing) works.

With a team of skilled professionals and craftsmen, we transform empty shells into fully functional and aesthetically refined environments tailored to our clients' visions and operational needs. Our commitment to quality, attention to detail, and timely delivery ensures that every project meets the highest standards of craftsmanship and functionality.

We aim to enhance the built environment by creating inspiring and efficient interior spaces that reflect the identity and values of our clients.





OUR SERVICES



OUR SERVICES

ENGINEERING

- DESIGN DEVELOPMENT
- BIM MODELING
- DESIGN CONCEPT
- CIVIL MODELING
- VR MODELING

EASY BUILD

- FITOUT WORKS
- MEP WORKS
- FURNITURE FABRICATION
- MAINTENANCE



OUR CLIENTS



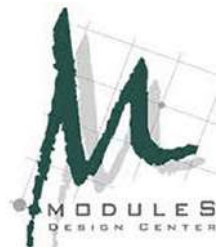
OUR CLIENT



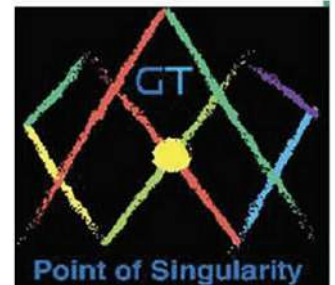
ST REGIS



OUR PARTNER



MODULES
DESIGN CENTER



TUNTEX™





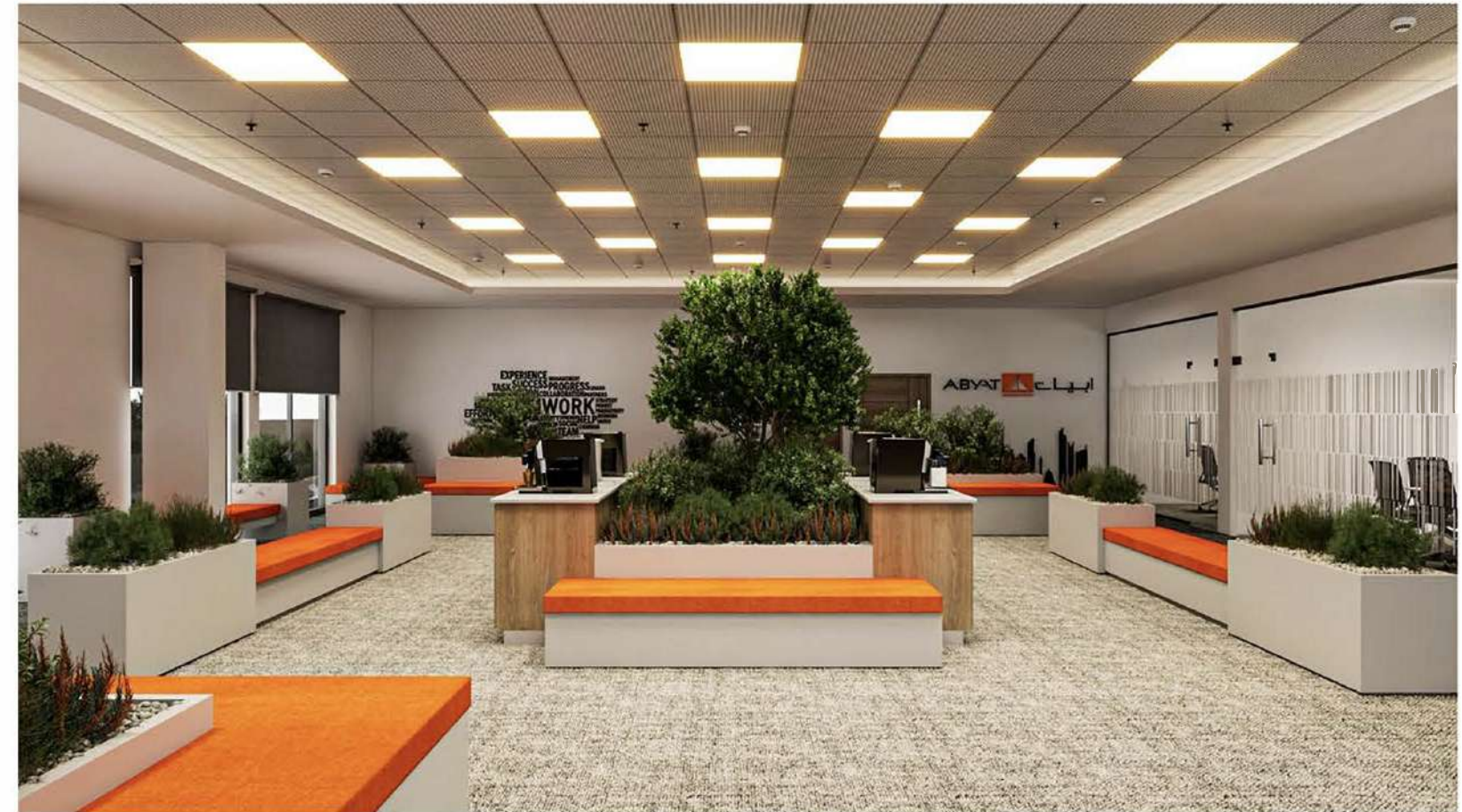
OFFICE SPACE

360°
RE

ABYAT SEMINAR HALL

 RIYADH- KSA

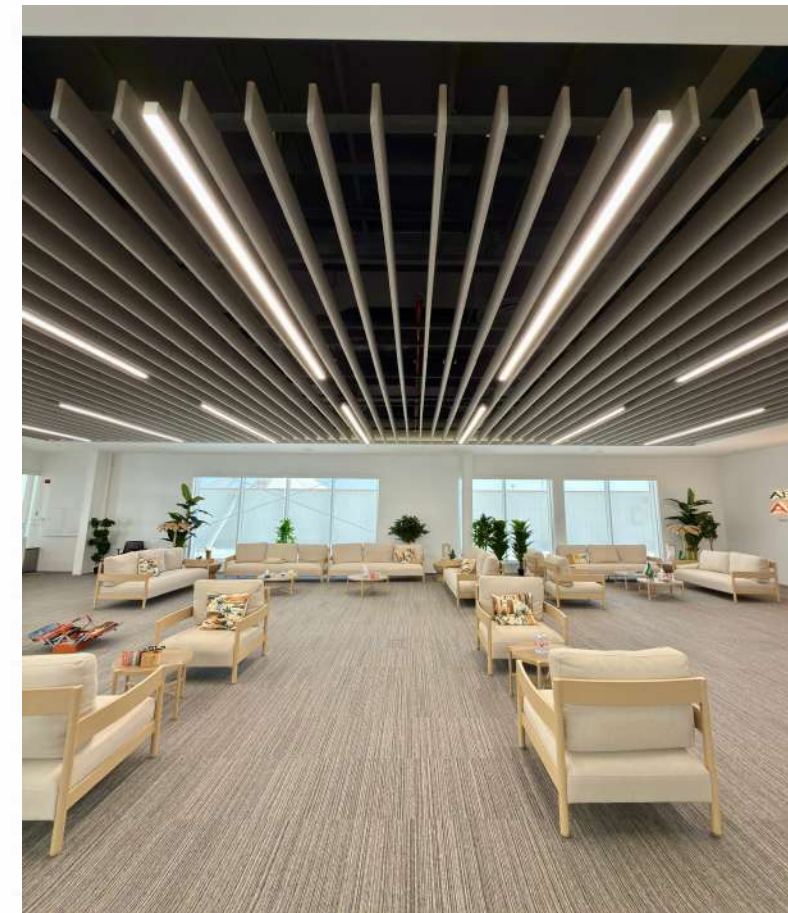
Design & Fitout



ABYAT SEMINAR HALL

📍 RIYADH- KSA

Design & Fitout



ADNOC

 ABU DHABI- UAE

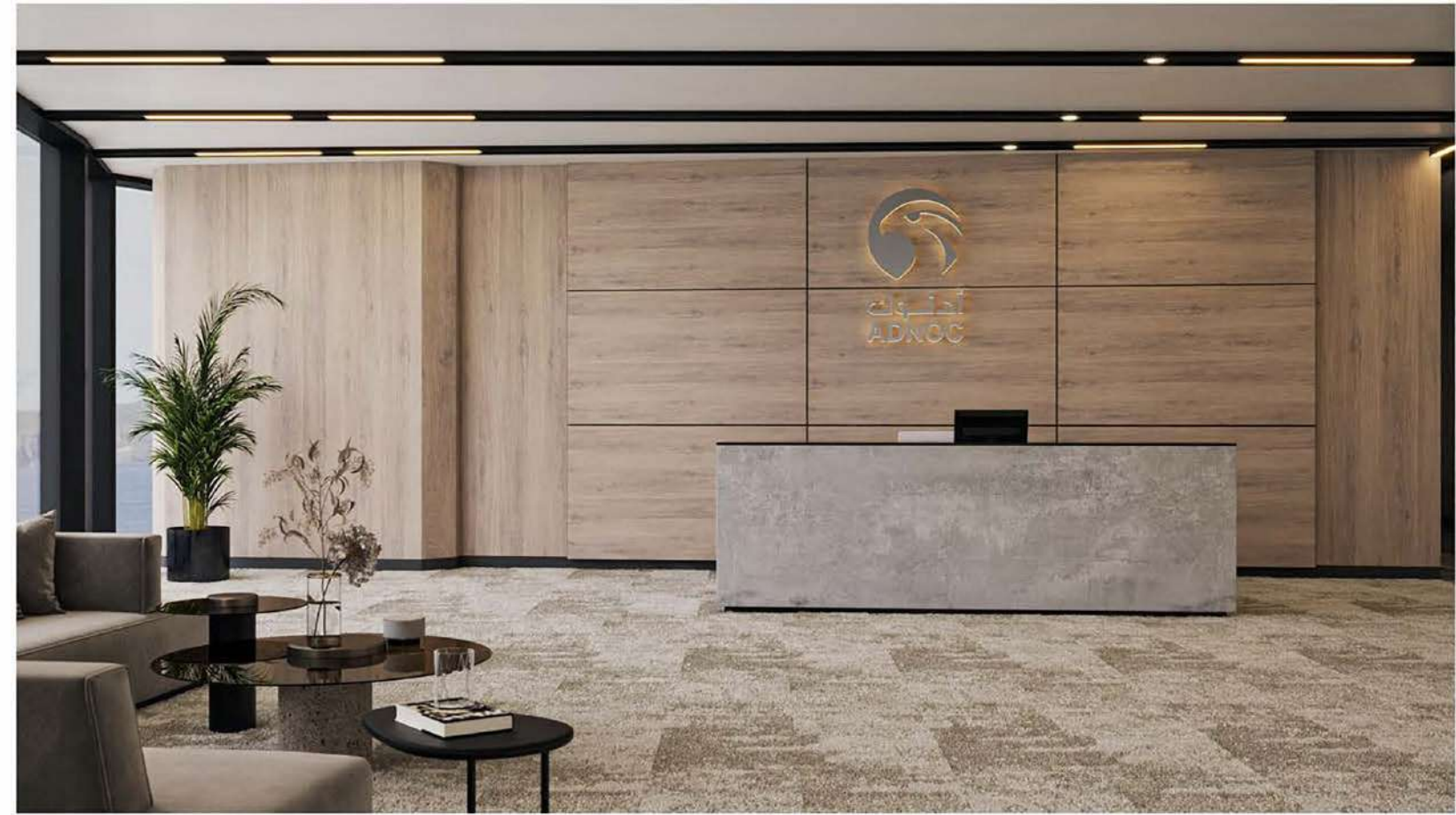
Design & MEP



ADNOC

📍 ABU DHABI- UAE

Design & MEP



SHORY.

 RIYADH -KSA

Design & FITOUT



FIS OFFICE

📍 RIYADH- KSA

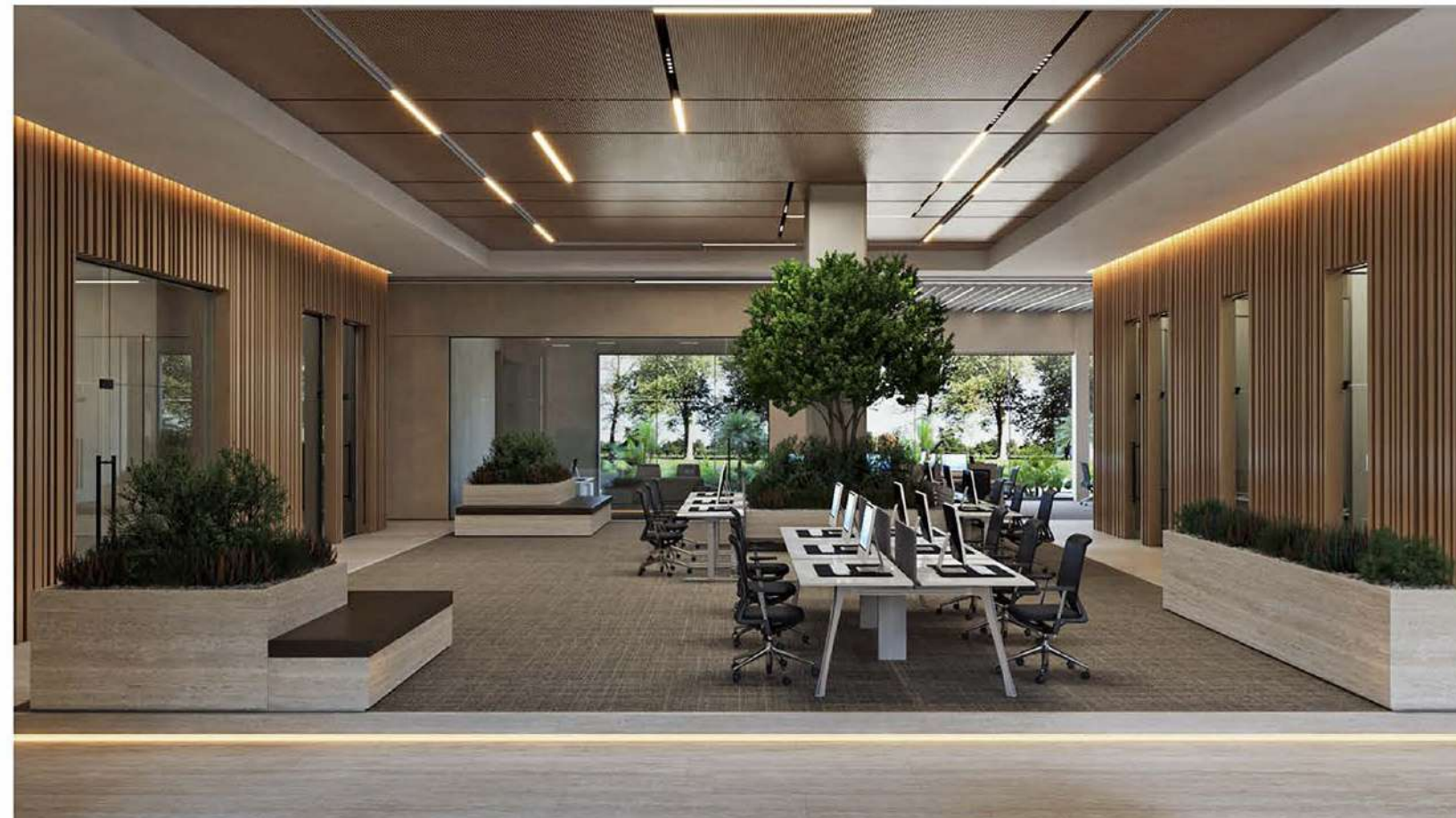
Design & Fitout



PRIVATE OFFICE

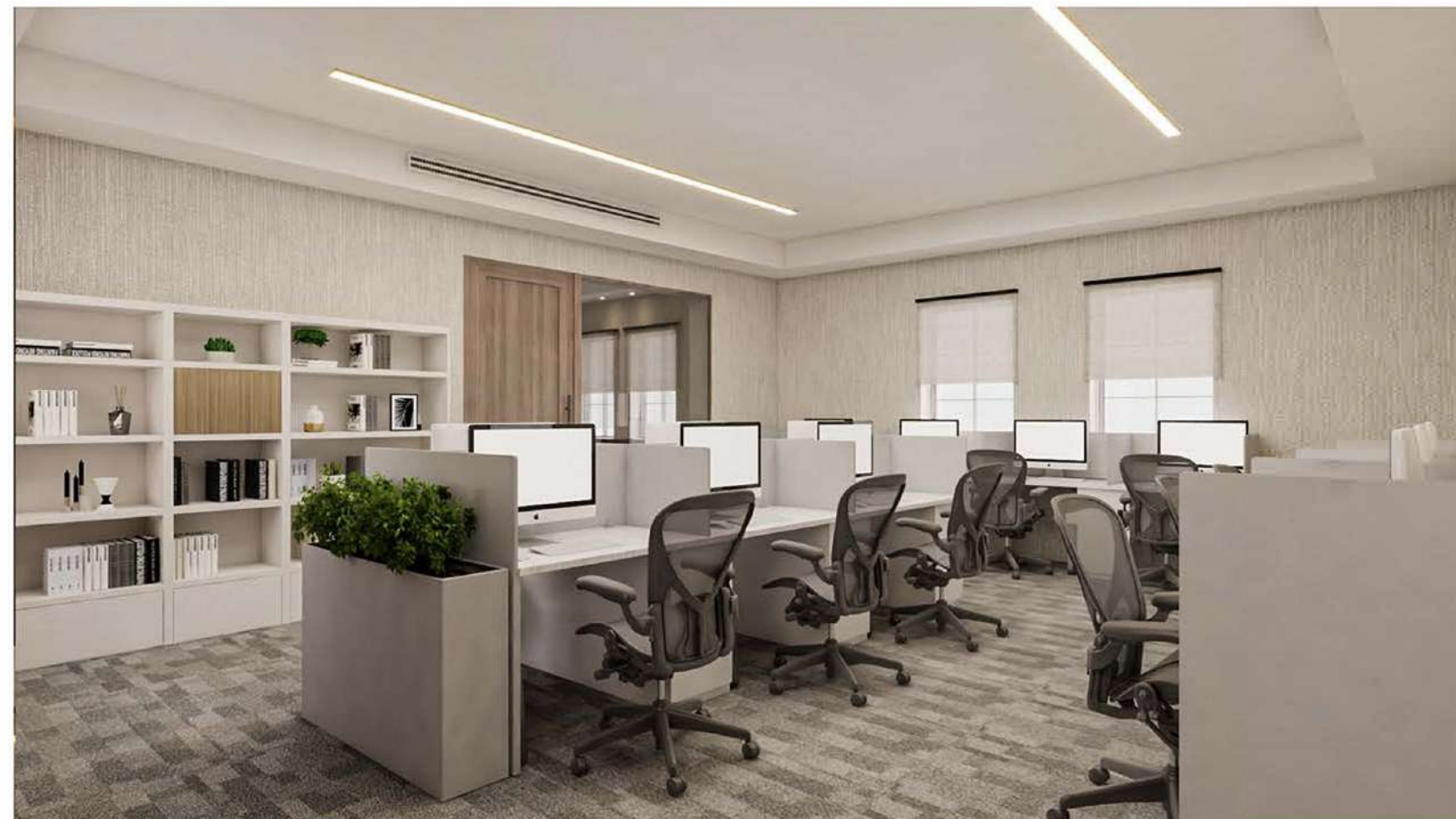
📍 RIYADH- KSA

Design & Fitout



PRIVATE OFFICE

📍 RIYADH- KSA
Design & Fitout



AL-ZAMIL

RIYADH- KSA

Design & Fitout



TAMINI OFFICE

📍 RIYADH- KSA

MEP WORKS

MEP WORKS



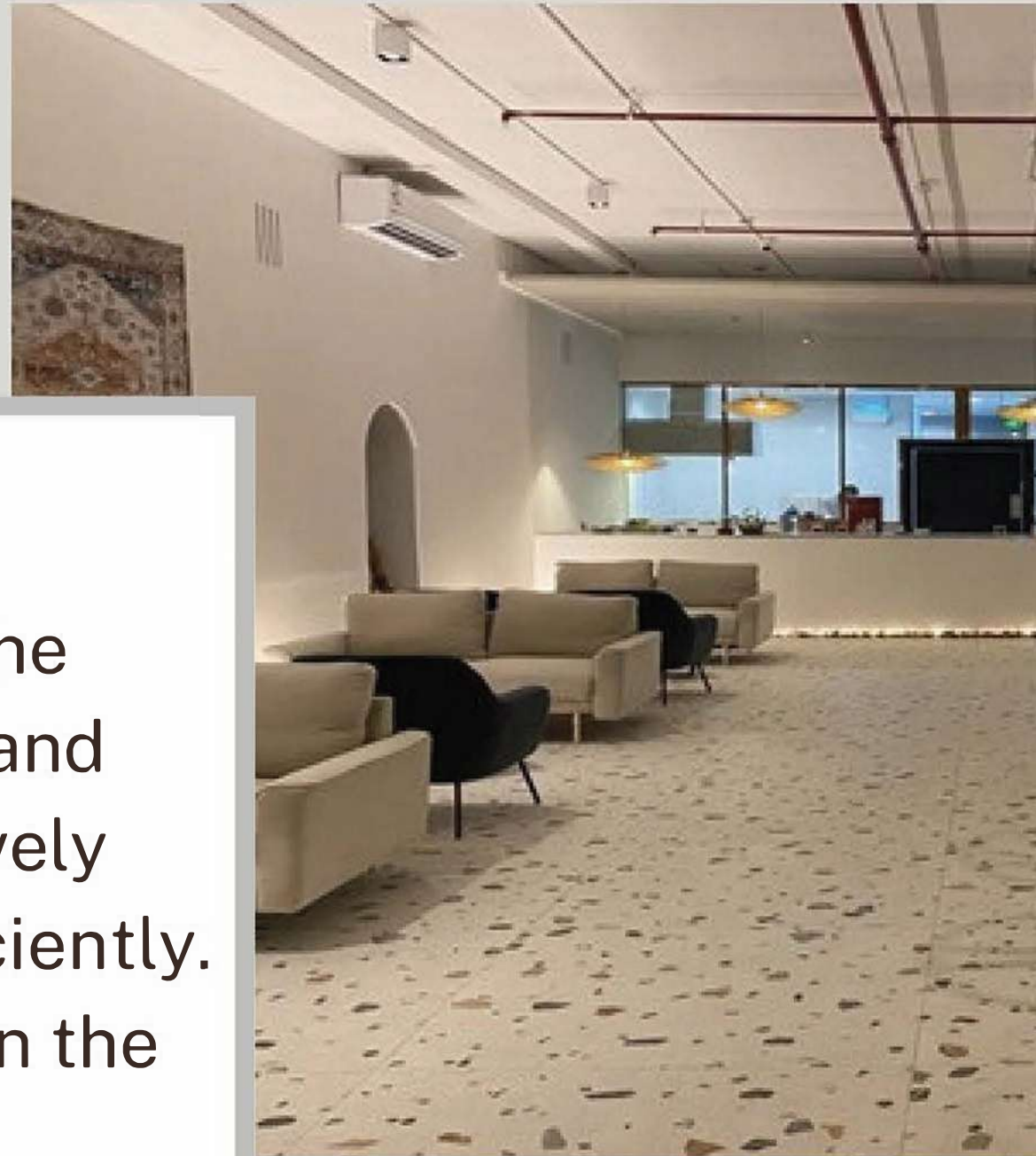


RESTAURANTS

m
360°

Restaurants Space

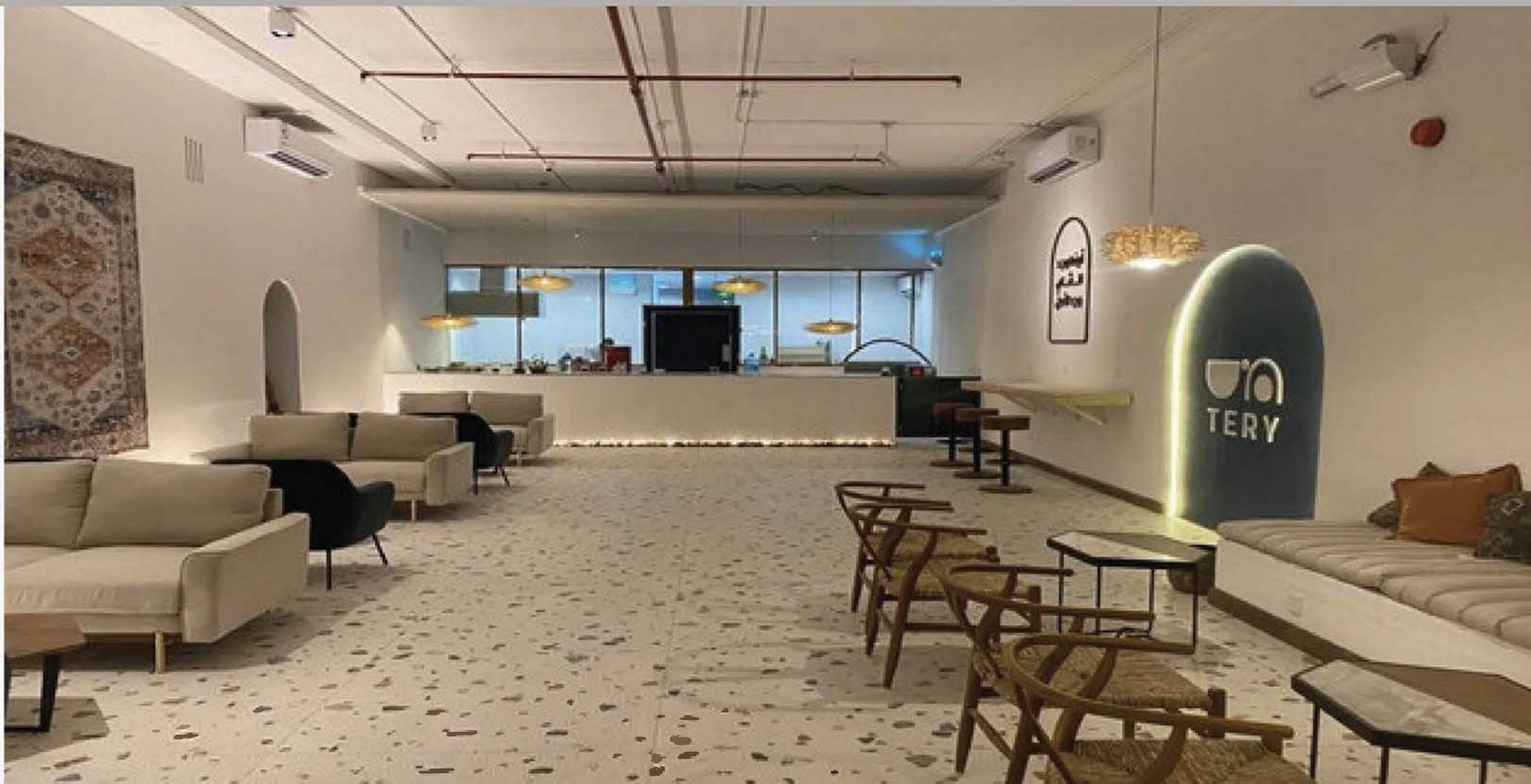
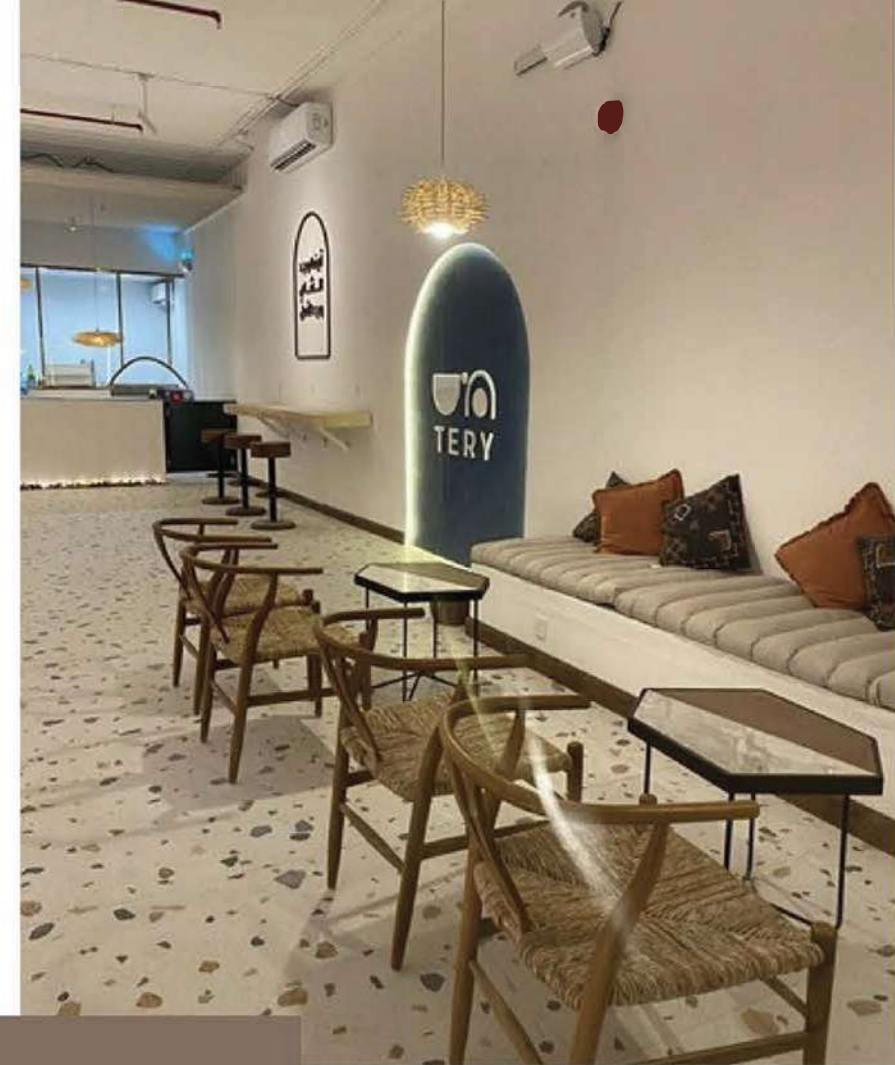
Restaurants space planning is the process of organizing furniture and office functions to work effectively together while using space efficiently. Consider the workgroup function the building codes and regulations, lighting, teaming requirements, inter communication, and storage to make the best use of available space.



TERY

📍 RIYADH - KSA

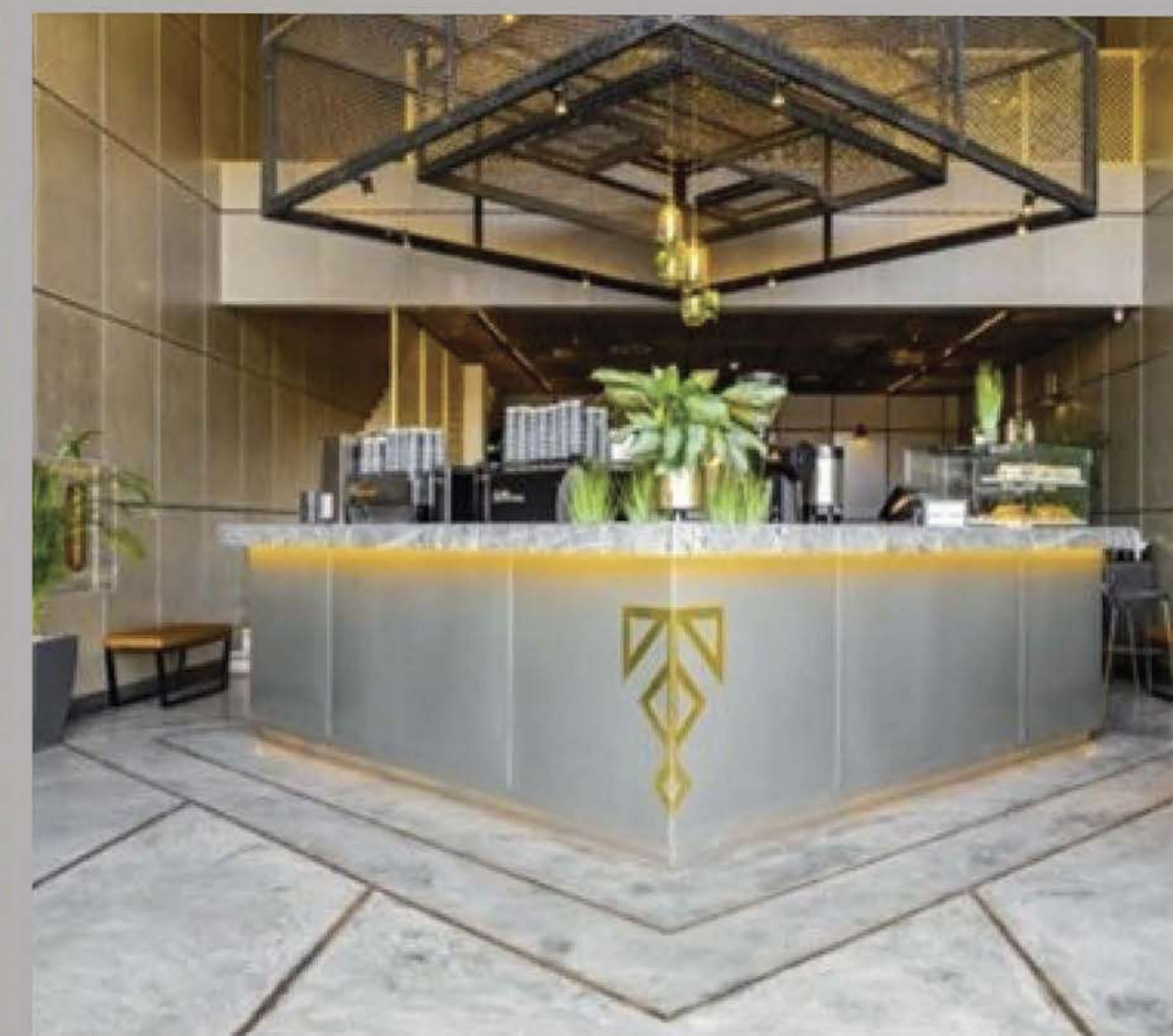
DESIGN & FIT OUT



TRIESTE

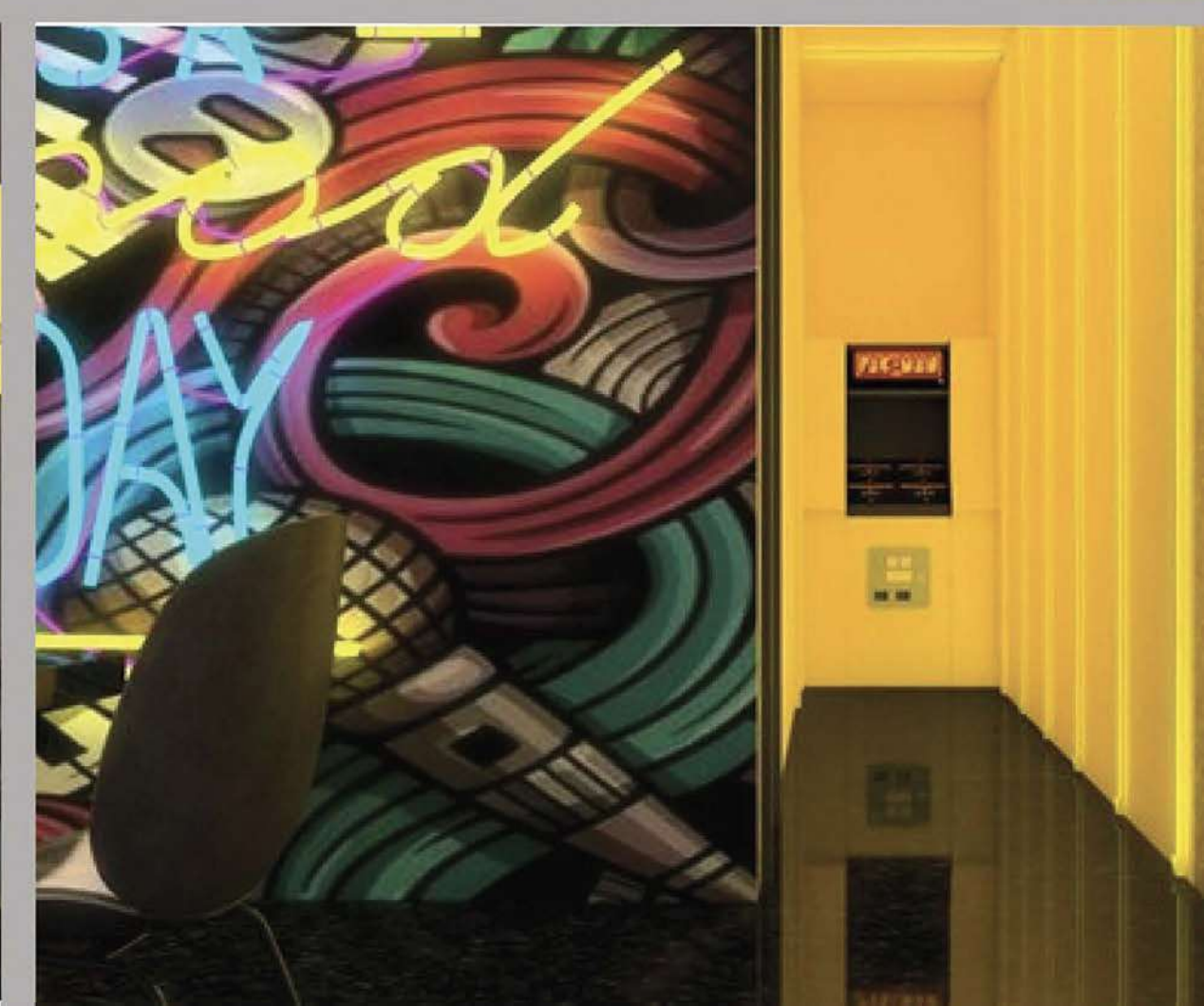
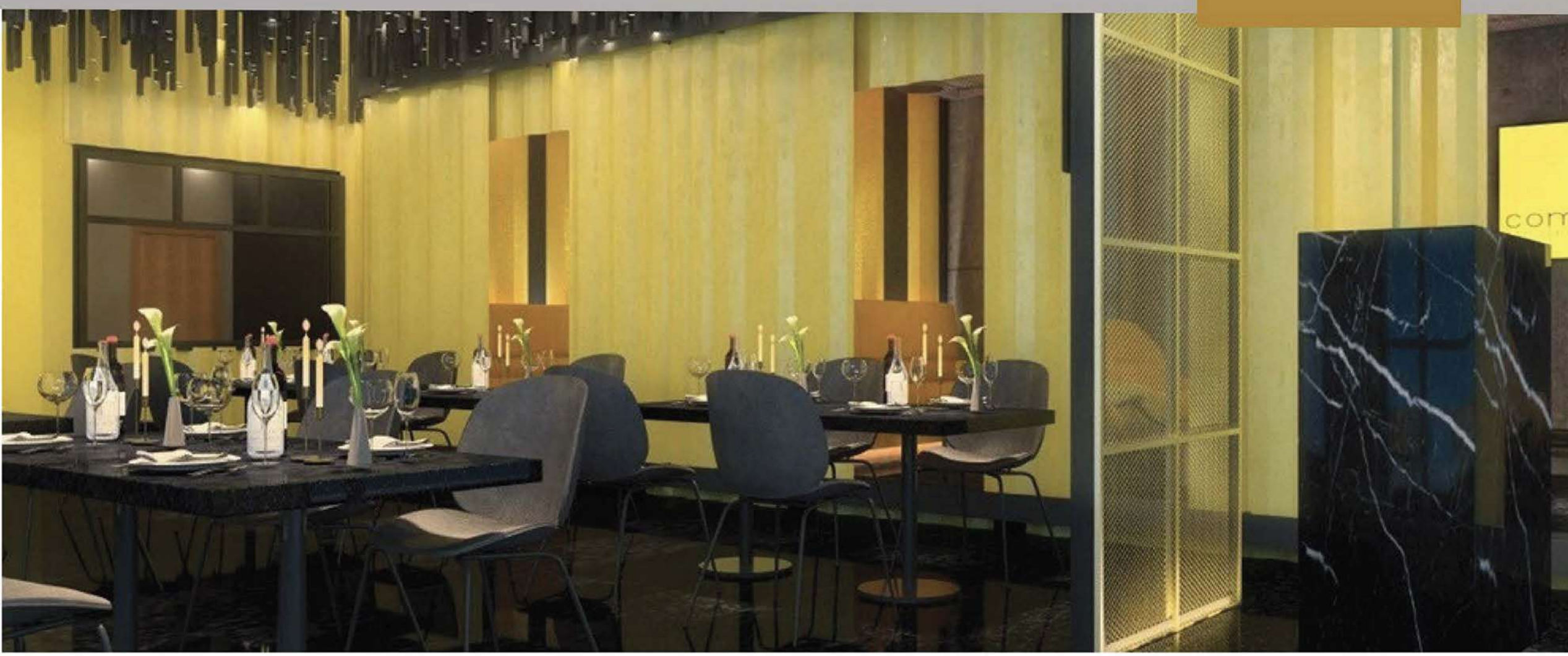
📍 RIYADH - KSA

DESIGN & FIT OUT



YELLOW

 DAMMAM - KSA
DESIGN & FIT OUT



CILICIA

RIYADH - KSA

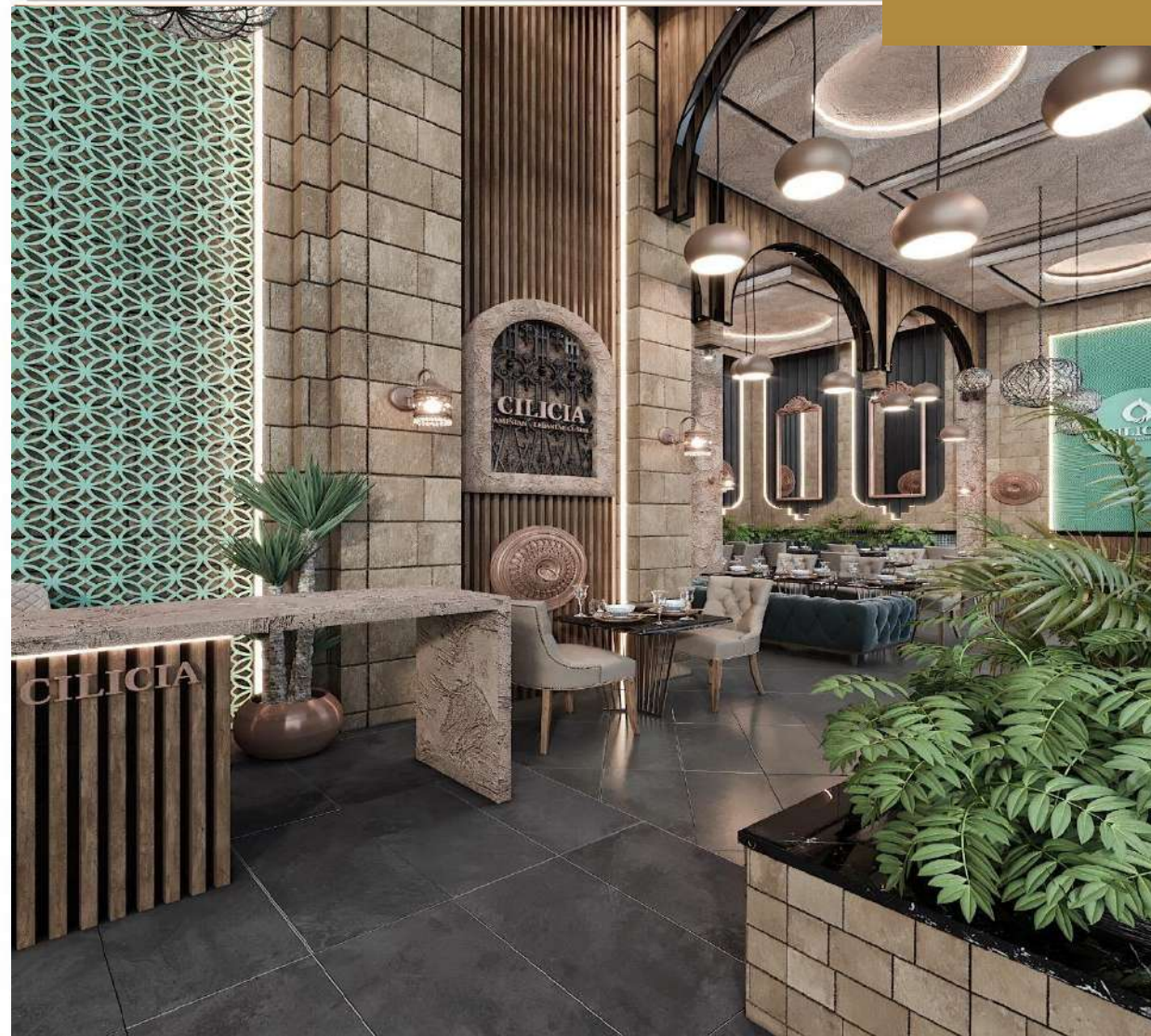
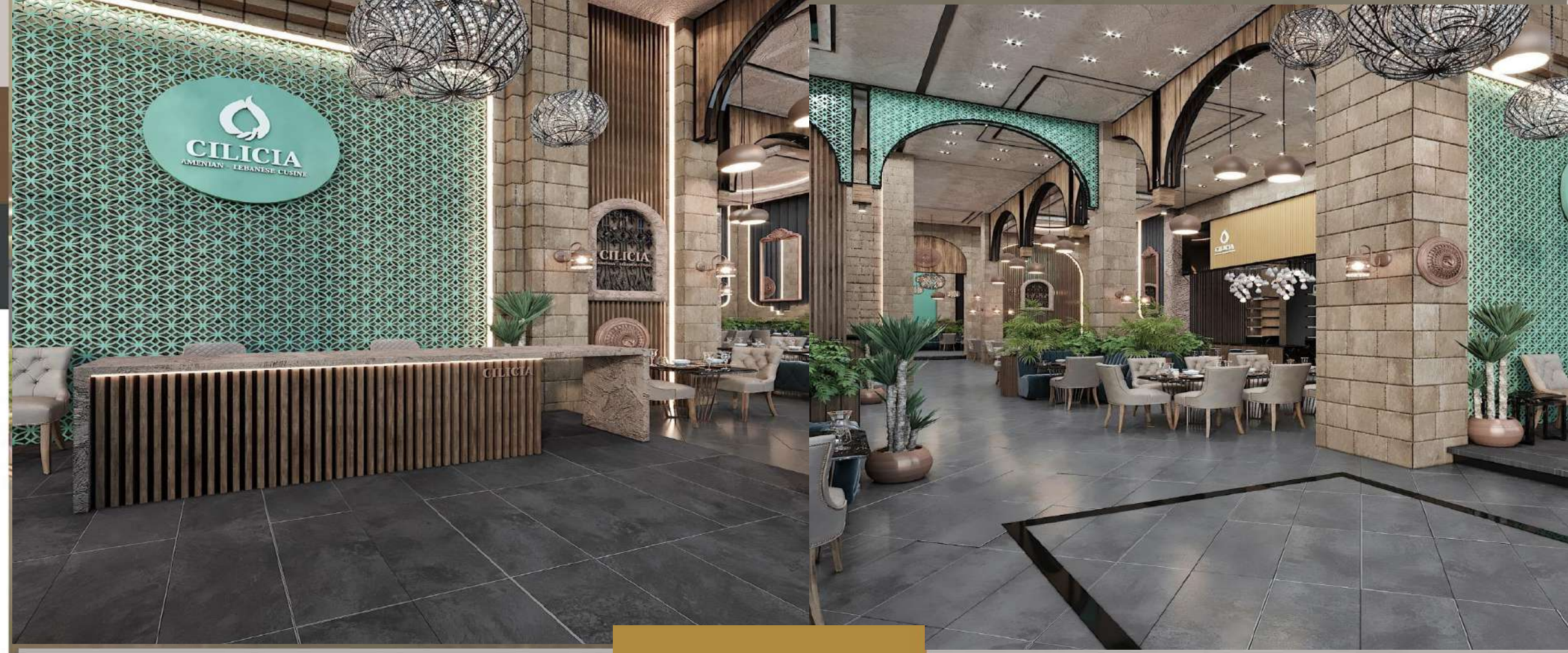
DESIGN & FIT OUT



CILICIA

RIYADH - KSA

DESIGN & FIT OUT



BAYAZ

📍 RIYADH - KSA

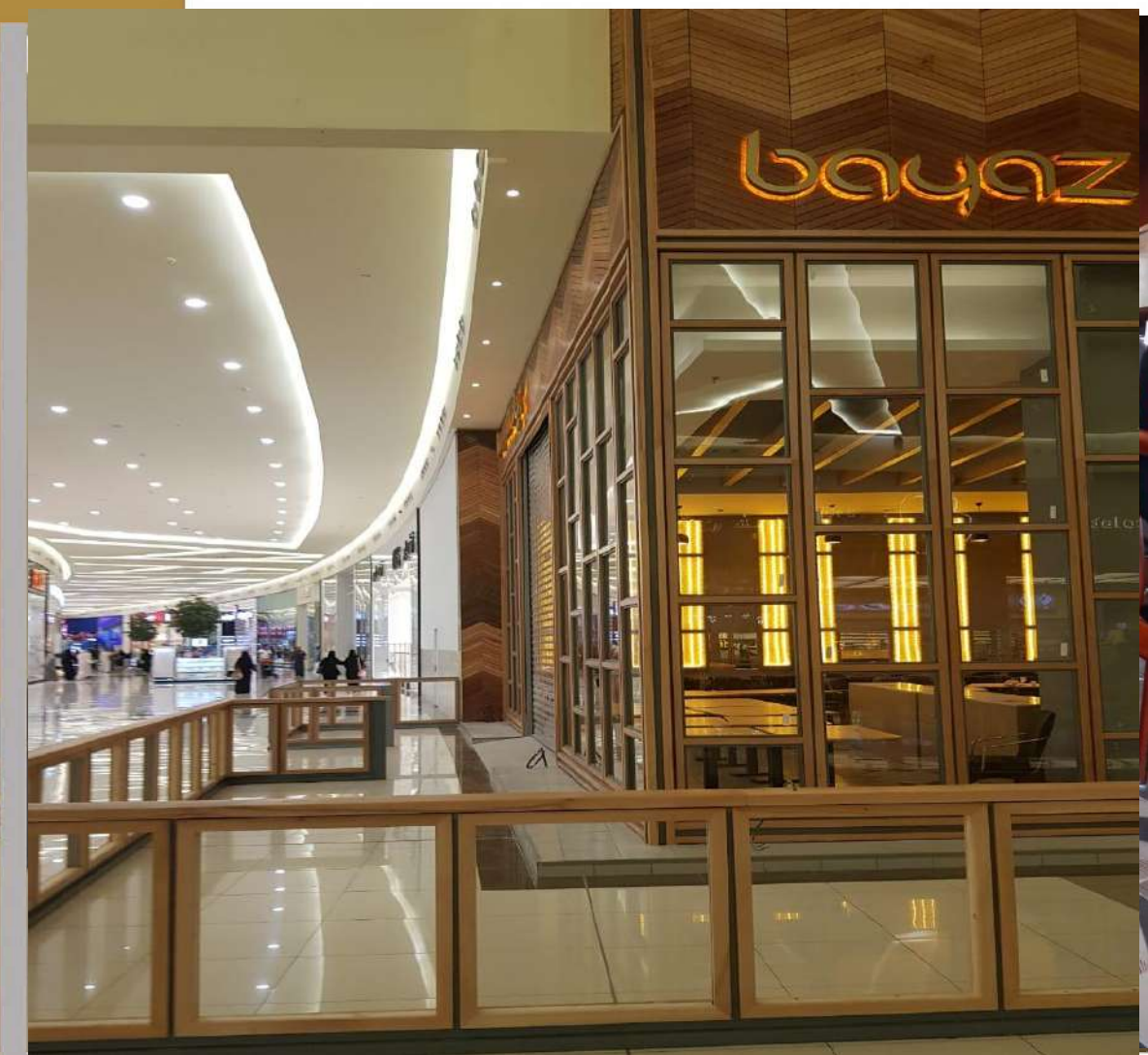
DESIGN & FIT OUT



BAYAZ

 JEDDAH- KSA

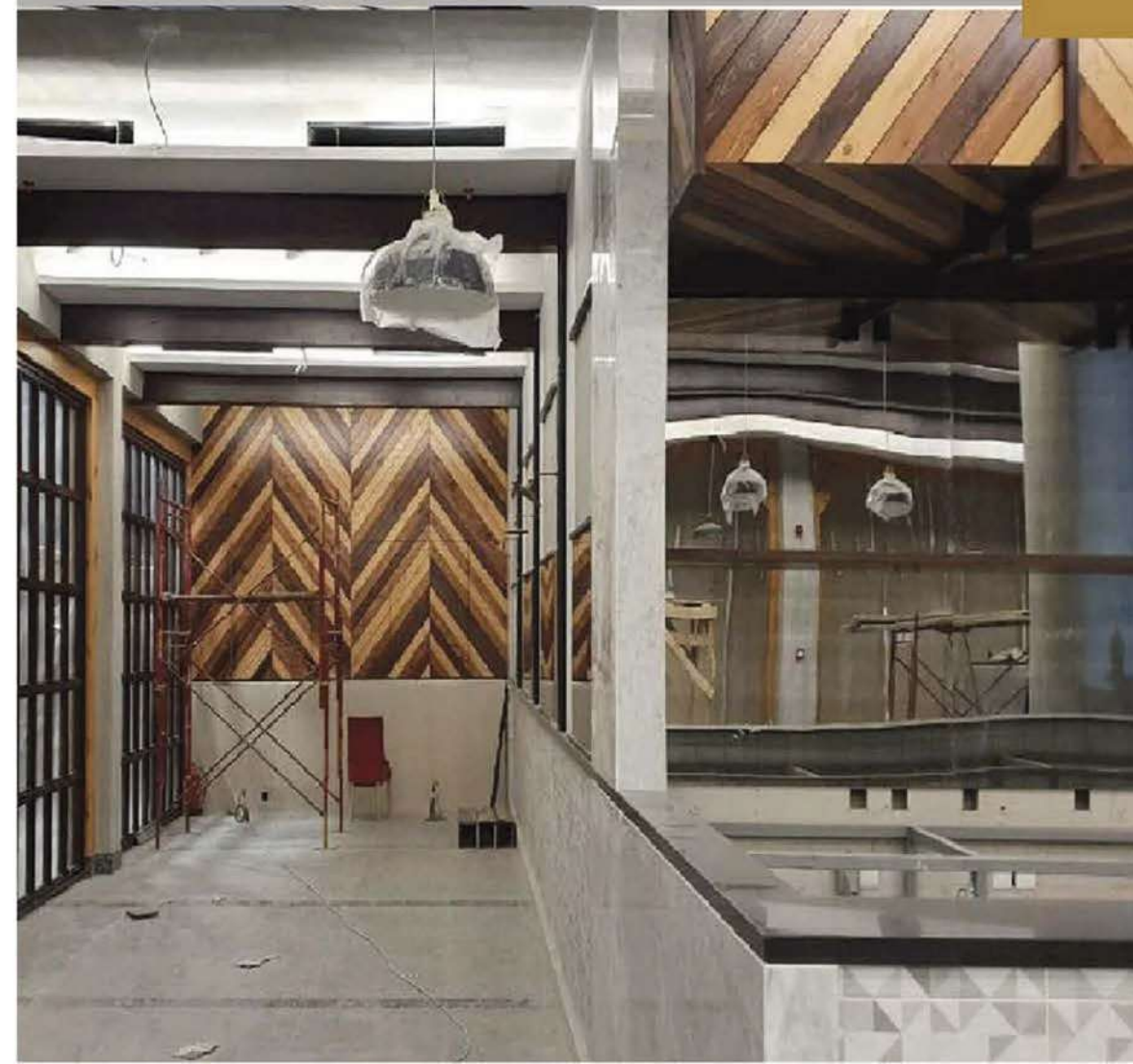
DESIGN & FIT OUT



BAYAZ

RIYADH - KSA

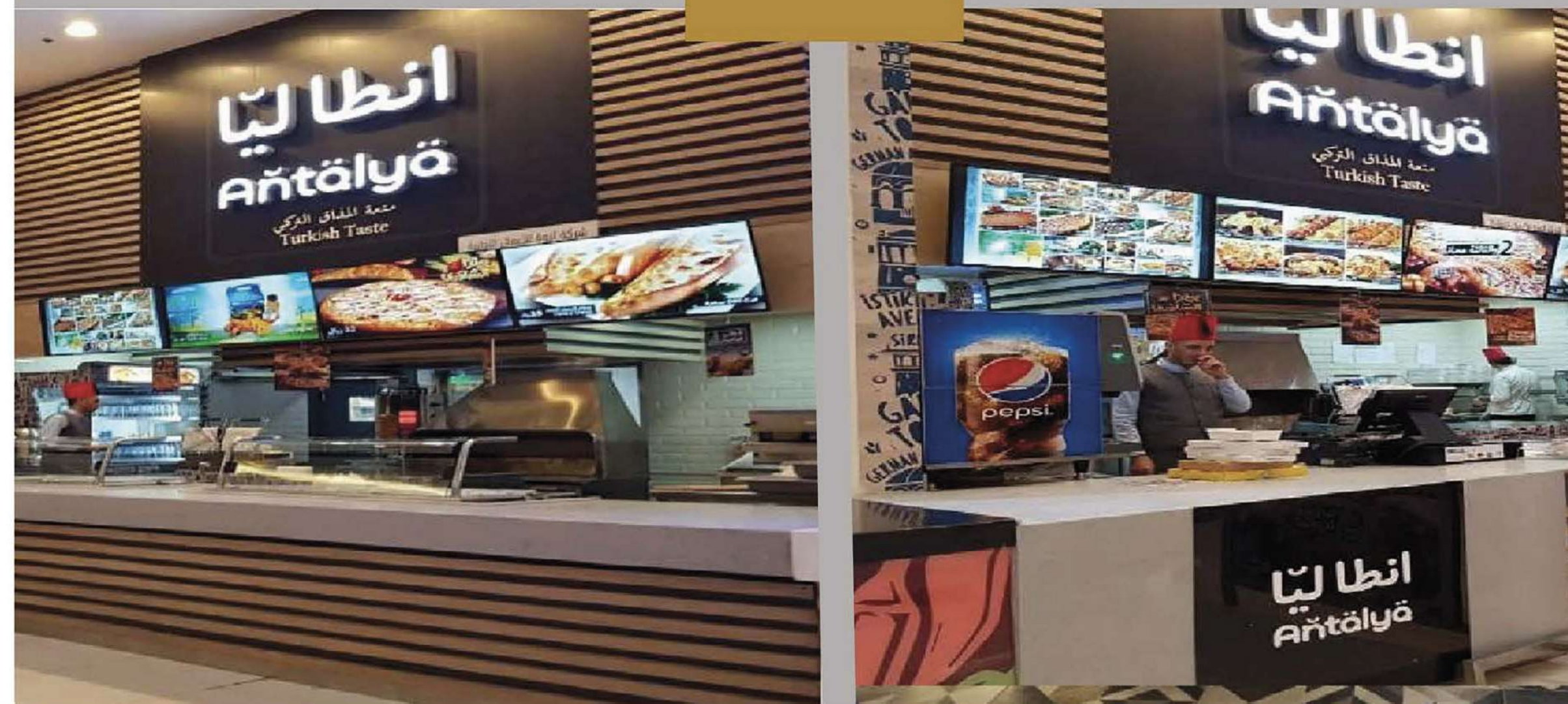
DESIGN & FIT OUT



ANTALYA

📍 RIYADH - KSA

DESIGN & FIT OUT





MEP WORK

m
360°

GULF SEAL

RIYADH-KSA

Description

removing the old chillers and installation of new chillers including the civil works (foundation), and supply and installation of stainless steel network pipes with all accessories, also we make a new filtering system for the old and new fabrication lines including all civil and electrical works that related to our scope

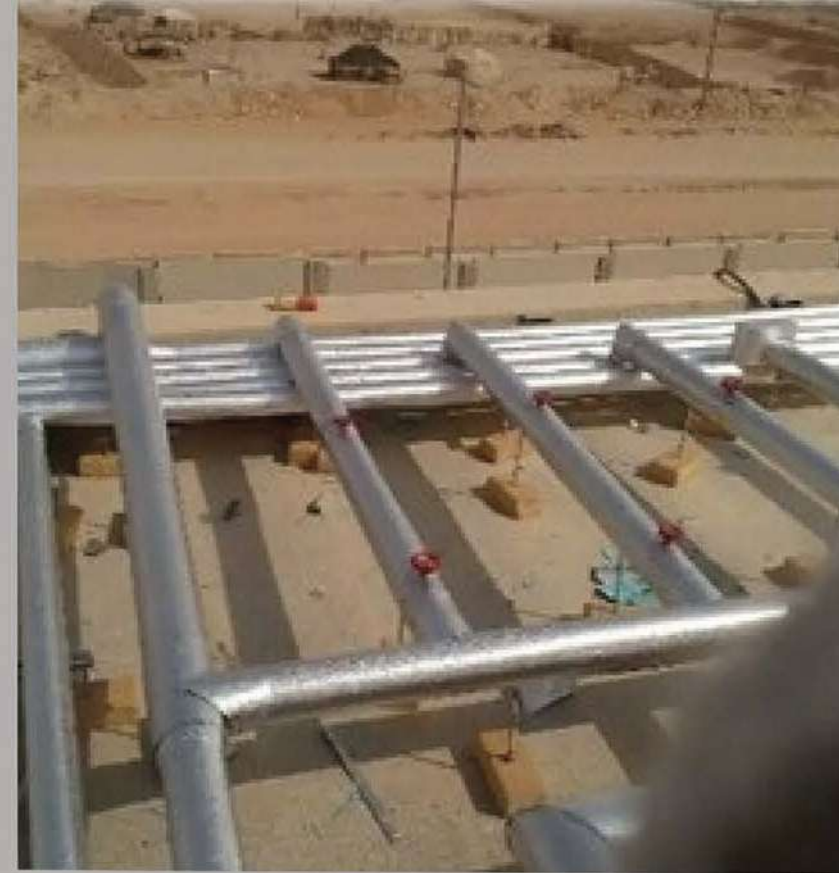


ALRIMAL

 RIYADH-KSA

DESCRIPTION

Chilled water installation and insulation



SOFITEL HOTEL

 RIYADH-KSA

DESCRIPTION
Plumbing works



QASIM JAIL

 QASIM-KSA

DESCRIPTION
Full MEP work





RESIDENTIAL SPACE

m
360°

PRIVATE VILLAS

📍 RIYADH - KSA

Drawings- Arch ,MEP & 3D



PRIVATE VILLAS

📍 RIYADH - KSA

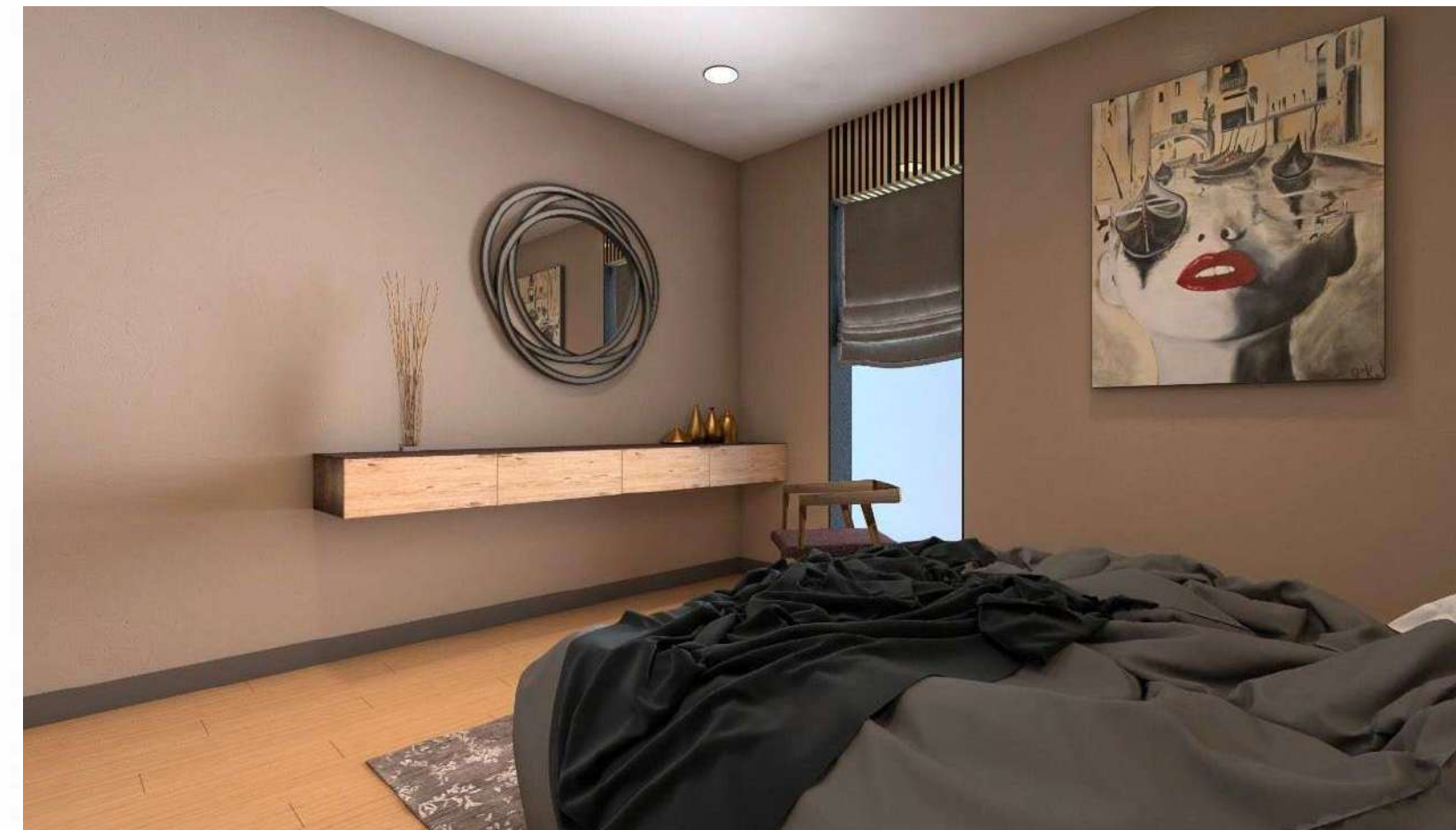
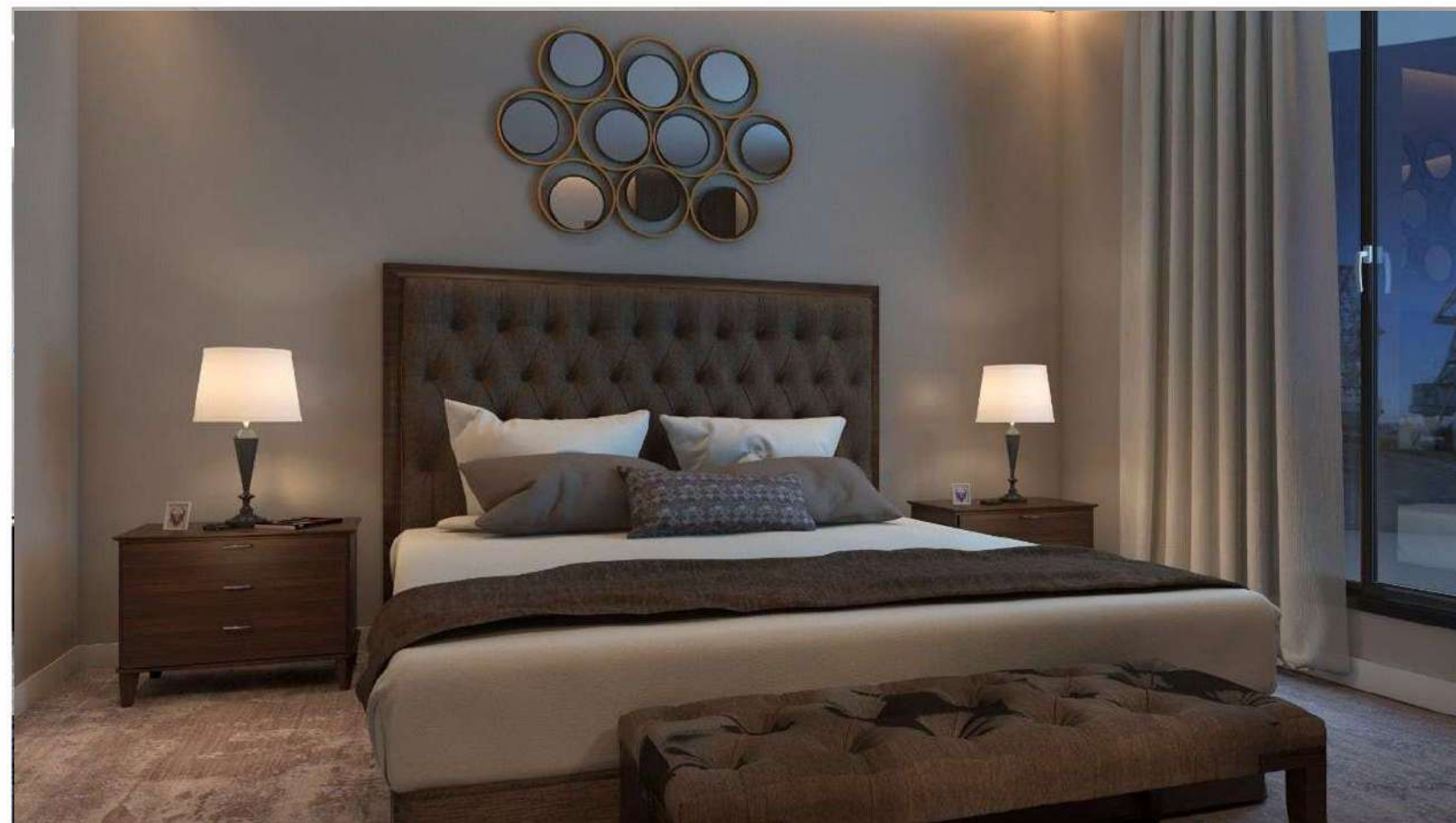
Drawings- Arch ,MEP & 3D



PRIVATE VILLAS

📍 RIYADH - KSA

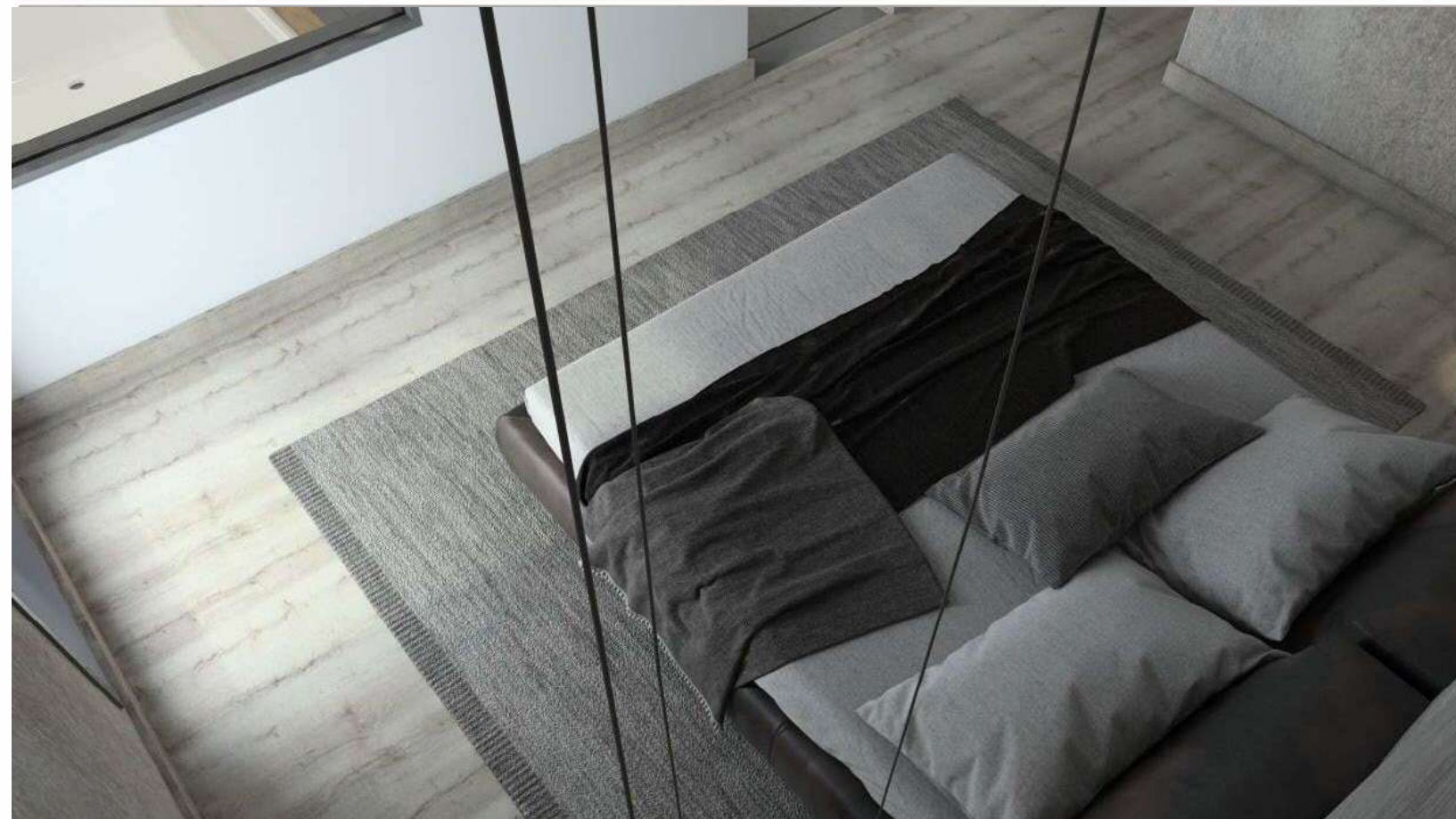
Drawings- Arch ,MEP & 3D



PRIVATE VILLAS

📍 RIYADH - KSA

Drawings- Arch ,MEP & 3D



PRIVATE VILLAS

📍 RIYADH - KSA

Drawings- Arch ,MEP & 3D

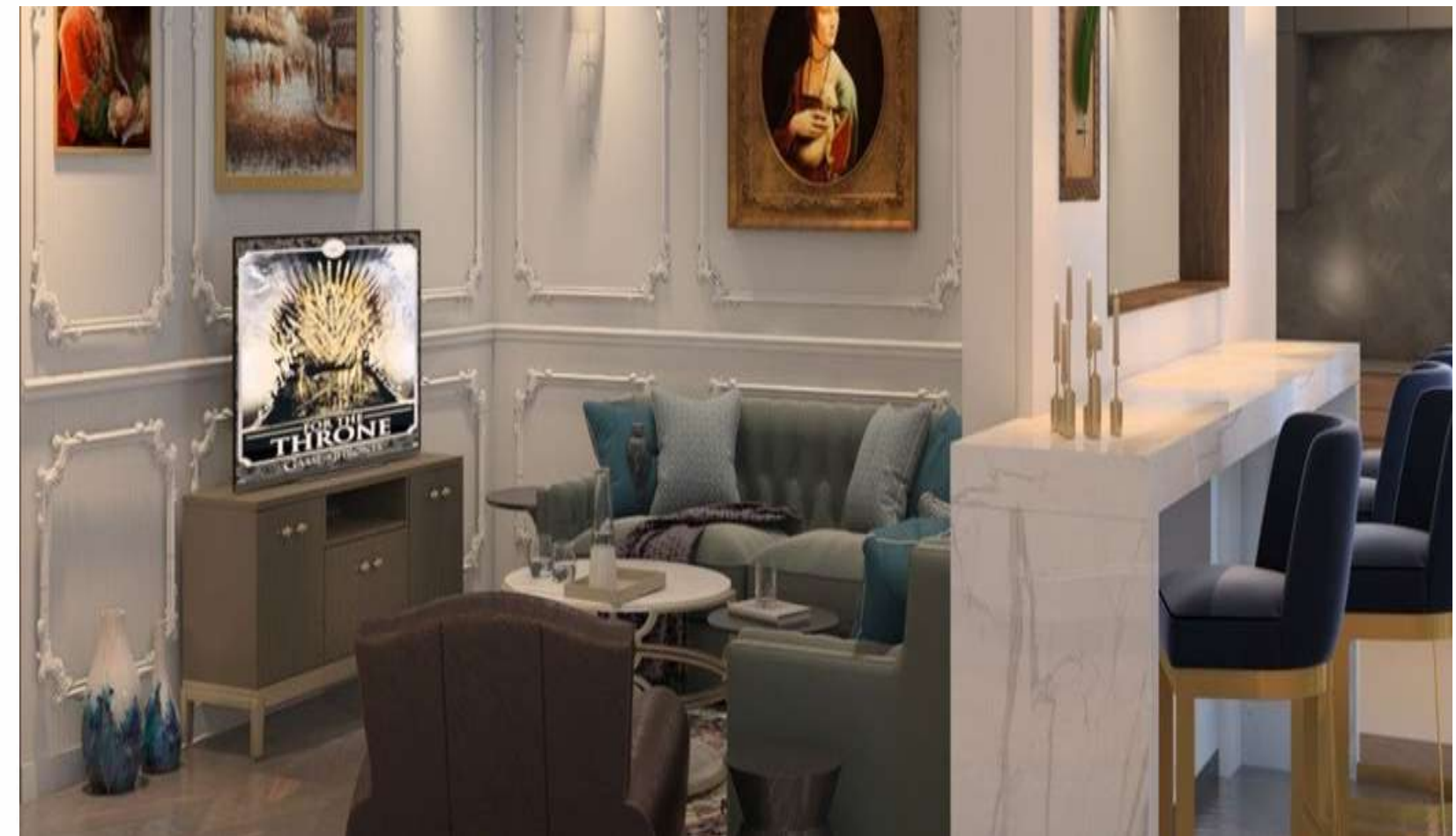


PRIVATE VILLAS

📍 RIYADH - KSA

Drawings- Arch ,MEP & 3D

© 2023 All Rights Reserved



PRIVATE VILLAS

📍 RIYADH - KSA

Drawings- Arch ,MEP & 3D

3D Renderings - Saudi 3D



FUTURE PLAN

Business plans are a lot like maps. If the organizational journey is proceeding smoothly, you may believe you don't need one. Indeed, there's a school of thought

backed by certain research — that says starting out with a formal plan is no predictor of success and it's better to get out there and test your concept in a real-world environment.

These naysayers argue that most business plans are theoretical, unrealistic and go out the window the first time the entrepreneur encounters an unforeseen hurdle



Work With Us

Join us as we are specialists in the field of infrastructure. Our company is dedicated to providing top-notch services in the design, construction, and maintenance of various infrastructure projects. With a strong focus on quality and innovation, we strive to deliver exceptional results that meet the needs of our clients and exceed industry standards.

By working with us, you'll have the opportunity to be part of a dynamic and collaborative team that is committed to excellence. Together, we can make a significant impact on the development and improvement of infrastructure, contributing to the growth and prosperity of communities we serve.

LET'S CONNECT



www.bu-360.com



info@bu-360.com



+966-59-555-3835

+966-59-266-7716



Business Gate , Riyadh

B360°