



ASI is a global leader in biomedical imaging with a comprehensive product portfolio for Karyotyping, H&E, IHC and FISH analysis. The Company's advanced technology provides Pathology, Cytogenetics and Research laboratories with end-to-end solutions from slide scanning, high-resolution Whole Slide Imaging (WSI), quantitative analysis, reporting, and all the way to LIS connectivity.

HiBand

Digital Chromosome Analysis
Automated scanning | Digital Karyotyping



HiFISH

Digital FISH Diagnostics
On-Screen Digital FISH Analysis
Automated Scanning



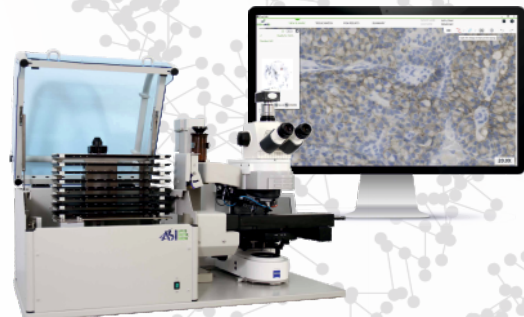
PathFusion

H&E | IHC | FISH | Full Digital Imaging
Automated FISH analysis | Digital Tissue Matching
Whole Slide Imaging



HiPath Pro

Advanced Digital Pathology
IHC Scoring
Whole Slide Imaging



Unit # 7, 407 Gage Avenue,
Kitchener, ON, Canada. N2M 5E1

+1(236) 838-3923
+1(226)808-0795



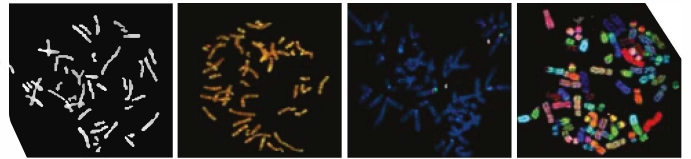
www.pgplifescientific.com



www.spectral-imaging.com



ISO 13485 CMDCAS Medical Devices
ISO13485 Medical Devices - ISO 9001

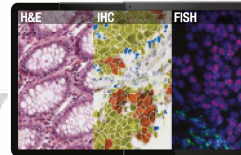
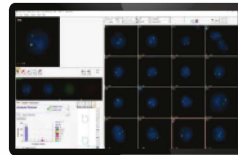
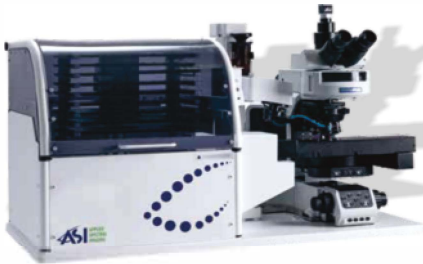


Q-Band

R-Band FL

FISH

Spectral



R-Band



G-Band

Applied Spectral Imaging

Advanced Digital Pathology

H&E | IHC | CISH | HIBAND | HIFISH | HIPATH PRO | PATHFUSION

A unique Brightfield imaging & analysis system for a variety of histopathology needs, including Quantitative IHC Scoring and Whole Slide Imaging of H&E/IHC samples. Through precise computer-assisted analysis and exceptional image quality, HiPath Pro provides uncompromising results standardization and enhances collaboration.

Authorized Sales Territories:

Turkey, Iraq, UAE, Qatar, Kuwait, Bahrain, Saudi Arabia, Oman, Armenia, Azerbaijan, Georgia, Turkmenistan, Tajikistan, Uzbekistan, Kazakistan, Afghanistan, Egypt, Sudan