

The five core elements of the Aboriginal and Torres Strait Islander Child Placement Principle

PREVENTION

Protecting children's rights to grow up in family, community and culture by supporting families to care safely for their children.



PARTNERSHIP

Ensuring the participation of community representatives in service design, delivery and individual case decisions.



CONNECTION

Maintaining and supporting connections to family, community, culture and country for children in out-of-home care.



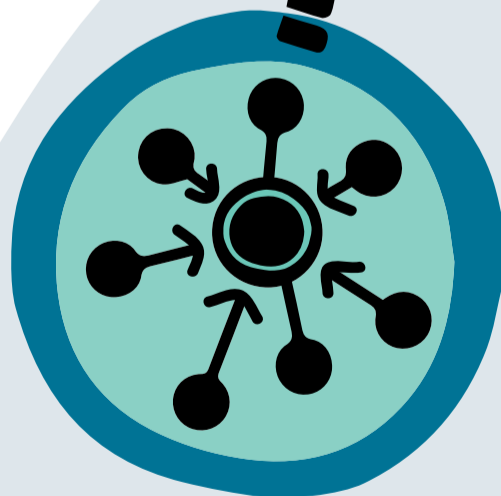
PLACEMENT

Placing children in out-of-home care in accordance with the established ATSICPP placement hierarchy.



PARTICIPATION

Ensuring the participation of children, parents and family members in decisions regarding the safety belonging and wellbeing of their children.



ChildProtectionPeak



SNAICC
National Voice for our Children



Queensland
Government