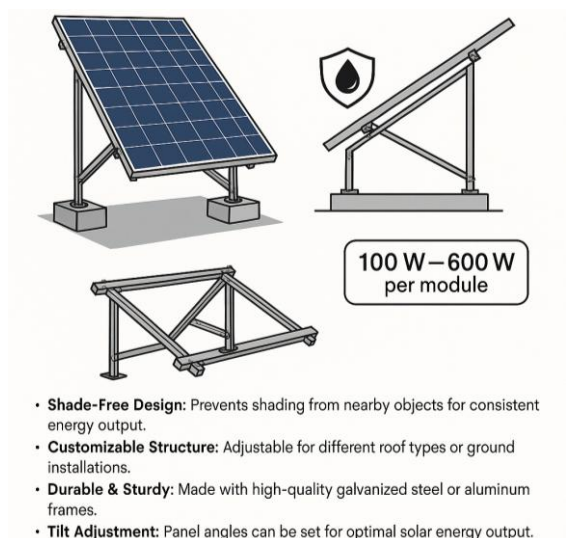


Elevated Solar Mounting System

Our elevated mounting system is designed to position solar panels above the roof or ground, ensuring maximum sunlight exposure throughout the day. By lifting the panels, it allows for better air circulation, which improves efficiency and helps keep the panels cool. Maintenance becomes hassle-free as cleaning and inspections can be done easily without disturbing the setup. The elevated design also prevents shading from nearby objects, ensuring consistent energy production. Flexible and sturdy, this system can be customized to fit different roof types or ground installations. It is ideal for flat rooftops, commercial buildings, and areas prone to dust or water accumulation. With this solution, you get a safe, durable, and high-performing solar installation that maximizes your energy output.

Features & Technical Info

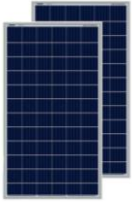
- **Optimized Sunlight Exposure:** Panels are mounted at an elevated height for maximum sunlight throughout the day.
- **Better Air Circulation:** Improved airflow keeps panels cool and boosts efficiency.
- **Easy Maintenance:** Cleaning and inspection are simple and hassle-free.
- **Shade-Free Design:** Prevents shading from nearby objects for consistent energy output.
- **Customizable Structure:** Adjustable for different roof types or ground installations.
- **Durable & Sturdy:** Made with high-quality galvanized steel or aluminum frames.
- **Tilt Adjustment:** Panel angles can be set for optimal solar energy output.
- **Weather Resistant:** Corrosion-resistant materials suitable for all weather conditions.
- **Panel Capacity:** Supports standard PV modules (100 W – 600 W per module).
- **Installation Type:** Bolted or ballast-supported; non-penetrative option available.





Bellwether Energy Pvt. Ltd.
Empower every household with the energy of the sun

Main Components of Solar Power System:



Module Solar Panel



Inverter



ACDB Box



DCDB Box



Lithium-Ion-Battery

Lightning Protection System:



Lightening Rod



Earthing Electrode

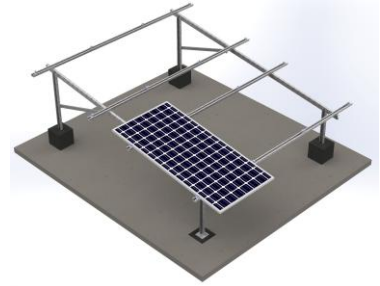


Earthing Pit Cover



Bentonite Powder

Rooftop Mounting Structure:



Explore the Key Components of Our Solar Mounting System:



Purlin



C-Channel



Strut Base Plate



Mid-Clamp



End-Clamp



Allen-Bolt



Spring Nut



Allen Head
Full Thread Bolt uses



Nut bolt with washer



Anchor Bolt



SS Nut bolt – M6 X 40mm
for Earthing rod uses



Mid-Clamp uses



End-Clamp uses



Structure Uses



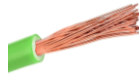
CABLES, CONNECTOR & WIRING ESSENTIALS:



DC-Cable



AC-Cable



Earthing Cable -1



Earthing Cable -2



DC-Cable



RPVC Conduit



T-Joint



PVC Bend



L-Joint



PVC Saddle with Nail



PVC Cable Tray



Flexible PVC Pipe



MC4 Connector



MC4 2 in 1 Connector



DTH Screw Kit



Ring Types Lugs



Pin Types Lugs



Screw



Pvc Gitty



Cable Tie



Insulation Tape

Concrete-Based Solar Mounting System:



Cement



Aggregate



Sand