

BUILDING SPACES, MANAGING EXCELLENCE, DELIVERING **WISDOM**

ARCHITECT & CIVIL CONTRACTOR | FACILITY MANAGEMENT
PROJECT MANAGEMENT | DEMANDS & SUPPLY.



INDEX

YOUR GATEWAY TO OUR WORLD OF EXPERTISE

CONTENT.

INTRODUCTION A MESSAGE FROM THE
FOUNDER.

MANAGEMENT AND ADVISORY BOARD.

GO WISDOM.

OUR VALUES, VISION, MISSION &
HISTORY.

SERVICES.

OUR SCOPE OF SERVICES

CLIENTS.

A WELL-KNOWN-NATIONAL COMPANIES
FROM ALL SECTORS.





WELCOME

A WARM WELCOME TO GO WISDOM A PARTNERSHIP BUILT ON TRUST & RESULTS

AT GO WISDOM WE ARE A TEAM OF DEDICATED PROFESSIONALS DRIVEN BY EXCELLENCE AND INTEGRITY.

OUR CORE MISSION IS TO BUILD ENDURING TRUST—ACROSS CLIENTS, VENDORS, AND OUR INTERNAL TEAMS—THROUGH CONSISTENT PERFORMANCE AND TRANSPARENT TO ACHIEVE OUR DELIVERABLES WITH PRECISION AND RELIABILITY, WE INTEGRATE CUTTING-EDGE TECHNOLOGIES AND STREAMLINED PROJECT MANAGEMENT SYSTEMS. THIS ENSURES TIMELY, QUALITY-DRIVEN EXECUTION ACROSS EVERY PHASE—ALIGNED WITH CLIENT EXPECTATIONS AND INDUSTRY BENCHMARKS..



Welcome to GO WISDOM

AT GO WISDOM, WE BELIEVE IN BUILDING MORE THAN JUST INFRASTRUCTURE—WE BUILD TRUST, PARTNERSHIPS, AND LASTING IMPACT. SINCE OUR INCEPTION IN 2017, WE HAVE BEEN COMMITTED TO DELIVERING EXCELLENCE ACROSS EVERY PROJECT, DRIVEN BY INNOVATION, PROFESSIONALISM, AND A CLIENT-FIRST APPROACH.

OUR JOURNEY HAS BEEN SHAPED BY A DEEP UNDERSTANDING OF THE EVOLVING NEEDS OF THE INFRASTRUCTURE AND ENGINEERING INDUSTRY. WITH PROVEN EXPERTISE IN CIVIL, ELECTRICAL, PLUMBING, AND FABRICATION SERVICES, WE PROVIDE TURNKEY SOLUTIONS TAILORED TO MEET THE HIGHEST STANDARDS OF QUALITY, SAFETY, AND TIMELY EXECUTION.

WHETHER IT'S A RESIDENTIAL TOWNSHIP, A CORPORATE WORKSPACE, OR A COMMERCIAL FACILITY, WE BRING THE SAME PASSION AND PRECISION TO EVERY PROJECT WE UNDERTAKE. BACKED BY A SKILLED TEAM AND A CULTURE OF INTEGRITY, GO WISDOM CONTINUES TO GROW AS A TRUSTED NAME IN INFRASTRUCTURE DEVELOPMENT.

WE WELCOME YOU TO EXPLORE OUR SERVICES AND EXPERIENCE THE RELIABILITY AND COMMITMENT THAT DEFINE EVERYTHING WE DO.



ABOUT US

FROM VISION TO REALITY, OUR JOURNEY OF EXCELLENCE

FOUNDED IN 2017, GO WISDOM BEGAN ITS JOURNEY WITH A STRONG VISION TO CONTRIBUTE MEANINGFULLY TO THE INFRASTRUCTURE DEVELOPMENT SECTOR. OVER THE YEARS, WE HAVE STEADILY DIVERSIFIED INTO VARIOUS DOMAINS OF INFRASTRUCTURE AND ALLIED SERVICES, EARNING A REPUTATION FOR RELIABILITY, QUALITY, AND COMMITMENT.

AT GO WISDOM, WE HAVE PROGRESSIVELY BUILT SPECIALIZED EXPERTISE IN DELIVERING MEP (MECHANICAL, ELECTRICAL & PLUMBING) SERVICES ON A TURNKEY BASIS, ENSURING SEAMLESS INTEGRATION ACROSS ENGINEERING DISCIPLINES.

OUR TEAM BRINGS HANDS-ON EXPERIENCE ACROSS A BROAD SPECTRUM OF PROJECTS—INCLUDING RESIDENTIAL AND COMMERCIAL DEVELOPMENTS, LARGE-SCALE MANUFACTURING UNITS, RESIDENTIAL TOWNSHIPS, AND MISSION-CRITICAL DATA CENTERS. FROM CONCEPT TO COMMISSIONING, WE ARE EQUIPPED TO DELIVER COMPLEX PROJECTS WITH PRECISION, SAFETY, AND ON-TIME EXECUTION

CERTIFICATIONS & ACCREDITATIONS

- CIN - U82990PN2025PTC244860
- REGISTERED TRADEMARK
- ISO CERTIFICATION
- UDYAM REGISTRATION (MSME – GOVERNMENT OF INDIA)
- GOVERNMENT LICENSE HOLDER

CHAIRMAN

SHRI B. B. GAISAMUDRE

IS RETIRED FROM WATER RESOURCES DEPARTMENT (WRD), PALAM, PARBHANI (DIST.) MAHARASHTRA. HE WAS ENTRUSTED WITH THE GOVERNMENT WORK OF COLONY MAINTENANCE, CONSTRUCTION/REPAIR AND IRRIGATION MANAGEMENT ETC. ALSO, HE HAS COMPLETED THE CIVIL ENGINEERING IN ASSISTANT DEPARTMENTAL TRAINING IN AURANGABAD BEFORE THE YEAR 1990-94.

ALSO, ALONG WITH THE SAID TRAINING, HE HAS TAKEN TRAINING ON THE SUBJECT OF PERSONALITY DEVELOPMENT AT AURANGABAD UNDER THE AUSPICES OF ENGINEERING COLLEGE NASHIK FROM 26/9/94 TO 29/9/94.

SHRI B.B. GAISAMUDRE HAS PERFORMED GOVERNMENT WORK EXCELLENTLY AND HAS BEEN RECOMMENDED BY THE EXECUTIVE ENGINEER AS A SPECIAL MATTER FOR INCLUSION IN THE POST OF CIVIL ENGINEERING ASSISTANT.

SHRI B.B. GAISAMUDRE WHILE DOING GOVERNMENT WORK, HAS SOLVED THE DRINKING WATER PROBLEM IN THE GOVERNMENT PALAM COLONY THROUGH PUBLIC SUBSCRIPTION.



MANAGEMENT

MR. KUNAL GAISAMUDRE

DIRECTOR

HE LEADS A PASSIONATE AND RESULTS-DRIVEN TEAM COMMITTED TO DELIVERING COMPREHENSIVE TURNKEY SOLUTIONS. WITH OVER A DECADE OF HANDS-ON EXPERIENCE, HE SPECIALIZES IN MANAGING LARGE-SCALE RESIDENTIAL, COMMERCIAL, CORPORATE, AND INDUSTRIAL PROJECTS FROM CONCEPT TO COMMISSIONING.

AT GO WISDOM, THE CORE STRENGTH LIES IN DESIGN INNOVATION, OPERATIONAL TRANSPARENCY, AND PROJECT INTEGRITY.



ADVISORY BOARD



ARUN SONWANE

TECHNICAL HEAD - PROJECTS

GUJARAT



SIBU MATHEW

IT & INFRASTRUCTURE MANAGEMENT

DELHI

OUR HISTORY

ESTABLISHED IN 2017, WISDOM WAS FOUNDED WITH THE VISION TO CONTRIBUTE TO INDIA'S FAST-EVOLVING INFRASTRUCTURE LANDSCAPE. STARTING WITH CORE CIVIL AND ELECTRICAL SERVICES, WE HAVE RAPIDLY EXPANDED INTO TURNKEY MEP, FABRICATION, AND SPECIALIZED INFRASTRUCTURE WORKS. OVER THE YEARS, WE HAVE DELIVERED DIVERSE PROJECTS ACROSS RESIDENTIAL, COMMERCIAL, INDUSTRIAL, AND DATA CENTER DOMAINS, EARNING TRUST AND CREDIBILITY THROUGH PERFORMANCE.

OUR VISION

TO BE A LEADING FORCE IN THE INFRASTRUCTURE AND ENGINEERING SECTOR BY CONSISTENTLY DELIVERING SERVICE EXCELLENCE AND QUALITY-DRIVEN SOLUTIONS THAT EXCEED CLIENT EXPECTATIONS AND CONTRIBUTE TO NATION-BUILDING.

OUR MISSION

TO DRIVE SUSTAINABLE GROWTH BY BUILDING TRUST-BASED PARTNERSHIPS, EMBRACING INNOVATION, AND ENSURING TIMELY AND RELIABLE PROJECT DELIVERY ACROSS ALL OUR SERVICE VERTICALS.

CORE VALUES

INTEGRITY

WE OPERATE WITH TRANSPARENCY, HONESTY, AND ACCOUNTABILITY.

EXCELLENCE

WE STRIVE FOR THE HIGHEST STANDARDS IN EVERY ASPECT OF OUR WORK.

INNOVATION

WE EMBRACE MODERN TECHNOLOGIES AND SMART PRACTICES.

COMMITMENT

WE ARE DEDICATED TO OUR CLIENTS, PARTNERS, AND TEAM.

COLLABORATION

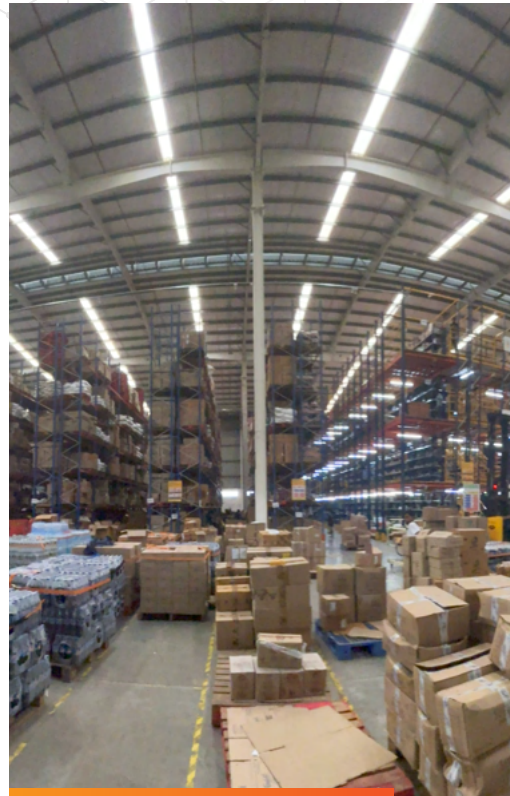
WE BELIEVE IN GROWING TOGETHER—WITH OUR CLIENTS, VENDORS, AND EMPLOYEES.

SERVICES

COMPREHENSIVE SOLUTIONS UNDER ONE ROOF



INFRASTRUCTURE
DEVELOPMENT



ELECTRICAL
SERVICES



PLUMBING & PHE
SERVICES



FABRICATION
SERVICES



INFRASTRUCTURE SERVICES

OUR CAPABILITIES INCLUDE:

- End-to-end construction of residential buildings, villas, and apartments
- Corporate office interiors and civil works
- Commercial complexes, malls, showrooms & retail fit-outs
- Site development and land grading for building construction
- Foundation, RCC works, blockwork & finishing
- External development: paving, compound walls, landscaping
- Drainage, stormwater & rainwater discharge systems
- Construction of boundary walls, guard rooms, and entry gates
- Fire escape staircases, ramps, and access infrastructure
- Internal roads and parking infrastructure for residential/commercial premises



EXECUTION STRENGTHS:

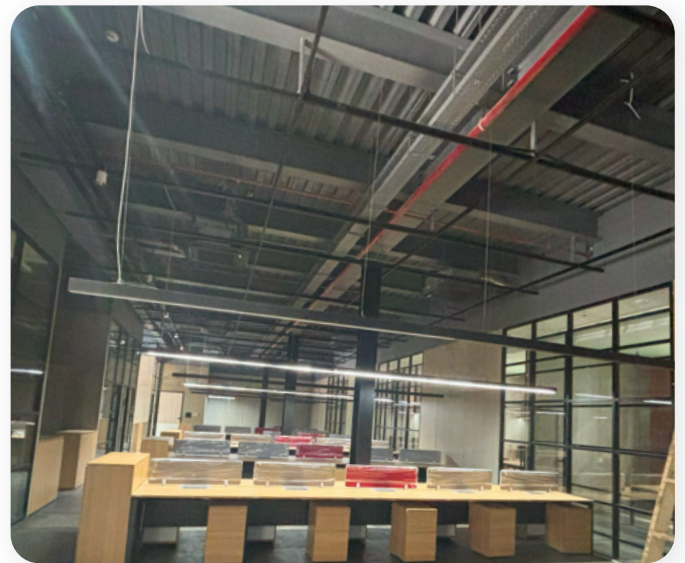
- Turnkey project delivery from concept to handover
- In-house architectural, civil, and MEP coordination
- Skilled workforce and advanced construction techniques
- Strict adherence to safety norms and quality benchmarks
- Timely handover with structured progress tracking



ELECTRICAL SERVICES

OUR CAPABILITIES INCLUDE:

- HT & LT panel installation and commissioning
- Power distribution and cabling (HT/LT/ELV)
- Substation erection (up to 33kV/66kV)
- Internal and external electrification for large campuses
- Street lighting and area illumination
- UPS, DG synchronization & power backup systems
- Energy audits and power factor improvement solutions
- BMS, fire alarm, PA, access control & surveillance integration



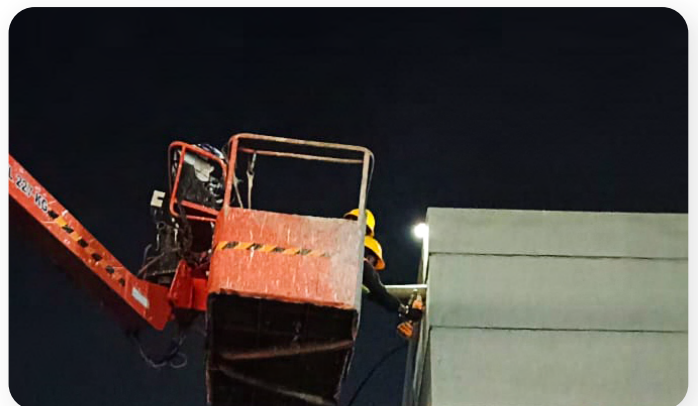
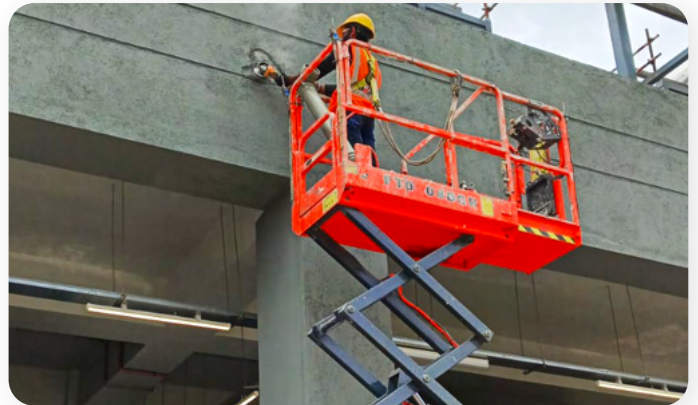
EXECUTION STRENGTHS:

- Industrial Plants & Warehouses
- Commercial Buildings & Data Centers
- Residential Townships
- Infrastructure Utilities (Airports, Metro, Rail)

PLUMBING & PHE SERVICES

OUR CAPABILITIES INCLUDE:

- Internal & external water supply systems
- Drainage and sewerage networks
- Overhead/underground tanks and pump rooms
- Rainwater harvesting systems
- Water treatment and effluent treatment plants (WTP/ETP)
- Firefighting piping and hydrant system installations
- Solar hot water systems & pressure boosting systems



COMPLIANCE & STANDARDS

- NBC, CPHEEO, and local municipal norms
- Green building plumbing practices

FABRICATION SERVICES

OUR CAPABILITIES INCLUDE:

- Structural steel fabrication and erection (PEB, industrial sheds)
- Pipe racks, equipment supports, platforms & walkways
- Custom panels, GI/SS ducting, exhaust & ventilation systems
- Skids, frames, staircases, guard rails
- MS/SS process piping fabrication
- Welding: TIG, MIG, Arc—QA/QC certified personnel



FACILITY STRENGTHS:













- CNC cutting, shearing & bending machines
- In-house blasting, painting & galvanizing
- On-site & workshop-based fabrication
- ISO 9001:2015 / AWS-D1.1 certified practices



**OUR WORK SPEAKS THROUGH
OUR VALUED CLIENTS**

CLIENTS

TRUSTED BY INDUSTRY LEADERS,
CHOSEN FOR EXCELLENCE

SERVING YOU ACROSS STRATEGIC LOCATIONS NATIONWIDE

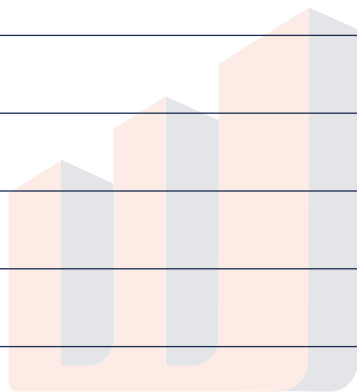


WE ARE LOCATED ACROSS INDIA IN MAHARASHTRA (PUNE, MUMBAI), GUJARAT (AHMEDABAD), KARNATAKA (BENGALURU), TAMIL NADU (CHENNAI), LUCKNOW (LUCKNOW), TELANGANA (HYDERABAD), WEST BENGAL (KOLKATA), DELHI, AND BIHAR (PATNA), ENSURING WIDESPREAD REACH AND ACCESSIBILITY.



NOTES

LET'S BUILD SOMETHING
GREAT TOGETHER






GO WISDOM SOLUTIONS PVT. LTD.

ARCHITECT & CIVIL CONTRACTOR | FACILITY MANAGEMENT
PROJECT MANAGEMENT | DEMANDS & SUPPLY.

CONTACT

-  +91 7499539343
-  info@gowisdom.in
-  gowisdom.in

HEAD OFFICE:

-  RAMA EQUATOR, OFFICE
NO.902, MOREWADI,
PIMPRI-CHINCHWAD,
PUNE, MAHARASHTRA,
PIN - 411018