



# ALBERTA TARP SYSTEMS, LTD CARGO CATALOG

---

**AUTHORIZED DEALER  
OF SIOUX CITY TARP**



**Alberta Tarp Systems, Ltd.**

#7 Main Street, Haynes  
Alberta, Canada

Owner: Larry Cocks

Toll Free: 1-866-374-9548

Local Call/Text: 1-403-304-3934

[info@albertatarpsystems.com](mailto:info@albertatarpsystems.com)

[www.albertatarpsystems.com](http://www.albertatarpsystems.com)

**1. Straps & Corner Protector** 04-14

**2. Buckle** 15-26

**3. Cargo Hook** 27-36

**4. E Track & Accessories** 37-50

**5. Transport Chain & Hook & Binder** 51-56

**6. Winch & Winch Bar** 57-62

**7. Tarpaulin & Accessories** 63-66

**8. Headache Rack & Tool Box** 67-76

**9. Banner & Flag** 77-80

**10. Truck Light** 81-84

**11. Labor Protection Appliance** 85-88

# 1. Straps & Corner Protector



## Winch Straps & Ratchet Straps Winch Straps



**SCKWS001**  
2"×27'  
B.S. 10,000LBS



**SCKWS002**  
2"×30'  
B.S. 10,000LBS



**SCKWS003**  
3"×27'  
B.S. 10,000LBS



**SCKWS004**  
3"×30'  
B.S. 16,200LBS



**SCKWS005**  
4"×27'  
B.S. 16,200LBS



**SCKWS006**  
4"×30'  
B.S. 16,200LBS



**SCKWS007**  
4"×27'  
B.S. 16,200LBS



**SCKWS008**  
4"×30'  
B.S. 16,200LBS



**SCKWS009**  
60MM×20M  
B.S. 15,000LBS

**Ratchet Straps**



**SCKRS001**  
2"×30'  
B.S. 10,000LBS



**SCKRS002**  
3"×30'  
B.S. 16,200LBS



**SCKRS003**  
4"×30'  
B.S. 16,200LBS

**Cam Buckle Straps**



**SCKCS001**  
25MM  
B.S. 250KGS



**SCKCS002**  
25MM  
B.S. 500KGS



**SCKCS003**  
25MM  
B.S. 350KGS



**SCKRS004**  
2"×30'  
B.S. 10,000LBS



**SCKRS005**  
3"×30'  
B.S. 16,200LBS



**SCKRS006**  
4"×27'  
B.S. 16,200LBS



**SCKCS004**  
25MM  
B.S. 450KGS



**SCKCS005**  
35MM  
B.S. 800KGS



**SCKCS006**  
50MM  
B.S. 1,350KGS

**Overcenter Buckle Strap**



**SCKRS007**  
2"×27'  
B.S. 10,000LBS



**SCKRS008**  
2"×27'  
B.S. 10,000LBS



**SCKRS009**  
2"×27'  
B.S. 10,000LBS



**SCKOS001**  
50MM  
B.S. 2,000KGS



**SCKOS002**  
50MM×1M  
B.S. 1,000KGS



**SCKOS003**  
45MM×70CM  
B.S. 1,200KGS

**Ratchet Lashing**



**SCKOS004**  
45MM×70CM  
B.S. 800KGS



**SCKOS005**  
50MM×70CM  
B.S. 800KGS



**SCKOS006**  
45MM×70CM  
B.S. 800KGS



**SCKRL001**  
25MM×6M  
B.S. 800KGS



**SCKRL002**  
25MM×6M  
B.S. 1,000KGS



**SCKRL003**  
28MM×6M  
B.S. 1,500KGS



**SCKOS007**  
50MM×70CM  
B.S. 1,200KGS



**SCKOS008**  
45MM×70CM  
B.S. 1,200KGS



**SCKOS009**  
50MM×4M  
B.S. 800KGS



**SCKRL004**  
35MM×6M  
B.S. 2,000KGS



**SCKRL005**  
38MM×6CM  
B.S. 3,000KGS



**SCKRL006**  
50MM×10M  
B.S. 5,000KGS



**SCKOS010**  
50MM×4.25CM  
B.S. 1,000KGS



**SCKRL007**  
50MM×10M  
B.S. 5,000KGS



**SCKRL008**  
50MM×10M  
B.S. 5,000KGS



**SCKRL009**  
75MM×10M  
B.S. 10,000KGS

Strap Winder



SCTKWA001



SCTKWA002



SCTKMS004



SCTKKS201



SCTKWA003



SCTKKS301



SCTKKS302

Other Straps



SCTKMS002



SCTKMS003

## Corner Protectors



**SCTKCP001**  
PE 175×130×60mm  
For 50mm Webbing  
N.W.: 180g



**SCTKCP002**  
PE 110×135×135mm  
For 100mm Webbing  
N.W.: 57g



**SCTKCP003**  
PE 265×110×110mm  
For 100mm Webbing  
N.W.: 200g



**SCTKCP010**  
PE 50×135×135mm  
For 50mm Webbing  
N.W.: 60g



**SCTKCP011**  
PE 45×45×65mm  
For 30mm Webbing  
N.W.: 10g



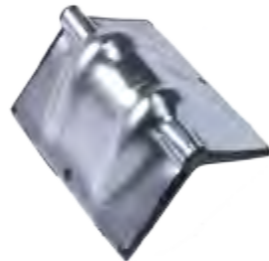
**SCTKCP012**  
PE 40×40×50mm  
For 19mm Webbing  
N.W.: 16g



**SCTKCP004**  
PE 100×100×135mm  
For 100mm Webbing  
N.W.: 88g



**SCTKCP005**  
Steel  
For 50mm Webbing  
N.W.: 550g



**SCTKCP006**  
Steel & Rubber  
For 50mm Webbing  
N.W.: 850g



**SCTKCP013**  
PE  
For 50mm Webbing  
N.W.: 60g



**SCTKCP014**  
PE  
8"×12"  
N.W.: 442g



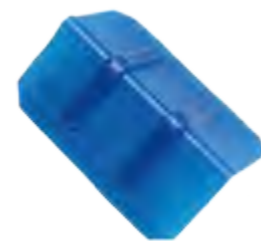
**SCTKCP015**  
PE  
8"×24"  
N.W.: 967g



**SCTKCP007**  
PE 395×85×85mm  
For 100mm Webbing  
N.W.: 57g



**SCTKCP008**  
PE 100×100×80mm  
For 50mm Webbing  
N.W.: 47g



**SCTKCP009**  
PE 65×65×145mm  
For 38mm Webbing  
N.W.: 56g



**SCTKCP016**  
PE  
8"×36"  
N.W.: 1.6kgs



**SCTKCP017**  
PE  
8"×48"  
N.W.: 2.43kgs



**SCTKCP018**  
PE  
N.W.: 65g



**SCTKCP023**  
PE 165×125×65mm  
For 50mm Webbing  
N.W.: 200g



**SCTKCP024**  
PE 180×135×70mm  
For 50mm Webbing  
N.W.: 230g



**SCTKCP025**  
ABS 190×160×65mm  
For 50mm Webbing  
N.W.: 265kgs



**SCTKCP026**  
PE 190×140×95mm  
For 75mm Webbing  
N.W.: 214g



**SCTKCP027**  
PVC 120×60mm  
For 35 or 25mm Webbing  
N.W.: 20g



**SCTKCP028**  
PU 4×100×280mm  
For 50mm Webbing  
N.W.: 122g



**SCTKCP101**  
PE 265×110×110mm  
For 100mm Webbing  
N.W.: 3.8kgs





# 2. Buckle



## Ratchet Buckle



**SCTKRB001**  
1", 25MM  
B.S. 10,000KGS  
3,330LBS



**SCTKRB002**  
1", 25MM  
B.S. 800KGS  
1,760LBS



**SCTKRB003**  
1", 25MM  
B.S. 800KGS  
1,760LBS



**SCTKRB004**  
1", 25MM  
B.S. 800KGS  
1,760LBS



**SCTKRB005**  
1", 25MM  
B.S. 800KGS  
1,760LBS



**SCTKRB006**  
1", 25MM  
B.S. 800KGS  
1,760LBS



**SCTKRB007**  
1", 25MM  
B.S. 800KGS  
1,760LBS



**SCTKRB008**  
1", 25MM  
B.S. 800KGS  
1,760LBS



**SCTKRB009**  
1", 25MM  
B.S. 800KGS  
1,760LBS



**SCTKRB010**  
1", 25MM  
B.S. 800KGS  
1,760LBS



**SCTKRB011**  
1", 25MM  
B.S. 800KGS  
1,760LBS



**SCTKRB012**  
1", 25MM  
B.S. 800KGS  
1,760LBS



**SCTKRB012**  
1", 25MM  
B.S. 1,000KGS  
2,200LBS



**SCTKRB014**  
1-1/16", 28MM  
B.S. 1,500KGS  
3,300LBS



**SCTKRB015**  
1-1/16", 28MM  
B.S. 1,500KGS  
3,300LBS



**SCTKRB030**  
2", 50MM  
B.S. 2,000KGS  
4,400LBS



**SCTKRB031**  
2", 50MM  
B.S. 5,000KGS  
11,000LBS



**SCTKRB032**  
2", 50MM  
B.S. 5,000KGS  
11,000LBS



**SCTKRB018**  
1-1/2", 35MM  
B.S. 2,000KGS  
4,400LBS



**SCTKRB019**  
1-1/2", 35MM  
B.S. 2,000KGS  
4,400LBS



**SCTKRB022**  
1-1/2", 35MM  
B.S. 3,000KGS  
6,600LBS



**SCTKRB033**  
2", 50MM  
B.S. 5,000KGS  
11,000LBS



**SCTKRB034**  
2", 50MM, L=330MM  
B.S. 5,000KGS  
11,000LBS



**SCTKRB035**  
2", 50MM, L=350MM  
B.S. 5,000KGS  
11,000LBS



**SCTKRB023**  
1-1/2", 35MM  
B.S. 3,000KGS  
6,600LBS



**SCTKRB024**  
1-1/2", 35MM  
B.S. 3,000KGS  
6,600LBS



**SCTKRB025**  
1-1/2", 35MM  
B.S. 3,000KGS  
6,600LBS



**SCTKRB036**  
2", 50MM  
B.S. 5,000KGS  
11,000LBS



**SCTKRB037**  
2", 50MM  
B.S. 5,000KGS  
11,000LBS



**SCTKRB038**  
2", 50MM  
B.S. 5,000KGS  
11,000LBS



**SCTKRB027**  
1-1/2", 35MM  
B.S. 2,500KGS  
5,500LBS



**SCTKRB028**  
2", 50MM  
B.S. 6,000KGS  
13,200LBS



**SCTKRB029**  
2", 50MM  
B.S. 5,000KGS  
11,000LBS



**SCTKRB039**  
2", 50MM  
B.S. 5,000KGS  
11,000LBS



**SCTKRB040**  
2", 50MM  
B.S. 5,000KGS  
11,000LBS



**SCTKRB041**  
2", 50MM  
B.S. 5,000KGS  
11,000LBS



**SCTKRB042**  
2-5/8", 65MM  
B.S. 15,000KGS  
33,000LBS



**SCTKRB043**  
3", 75MM  
B.S. 10,000KGS  
22,000LBS



**SCTKRB044**  
4", 100MM  
B.S. 10,000KGS  
22,000LBS



**Cam Buckle**



**SCTKCB001**  
19MM B.S. 150KGS  
330LBS



**SCTKCB002**  
25MM B.S. 250KGS  
550LBS



**SCTKCB003**  
25MM B.S. 250KGS  
550LBS



**SCTKCB005**  
25MM B.S. 350KGS  
770LBS



**SCTKCB006**  
25MM B.S. 480KGS  
1600LBS



**SCTKCB007**  
25MM B.S. 350KGS  
770LBS



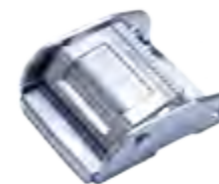
**SCTKCB009**  
25MM B.S. 680KGS  
1,500LBS



**SCTKCB010**  
35MM B.S. 800KGS  
1,760LBS



**SCTKCB011**  
35MM B.S. 680KGS  
1,500LBS



**SCTKCB013**  
50MM B.S. 1,350KGS  
3,000LBS



**SCTKCB014**  
50MM B.S. 900KGS  
2,000LBS



**SCTKCB015**  
35MM B.S. 700KGS  
1,540LBS



**SCTKCB016**  
25MM B.S. 680KGS  
1,500LBS



**SCTKCB017**  
35MM B.S. 700KGS  
1,540LBS



**SCTKCB018**  
50MM B.S. 1,350KGS  
3,000LBS



**SCTKSB104**  
2" B.S. 3,000KGS  
3,000LBS



**SCTKSB105**  
2" B.S. 1,760KGS  
1,760LBS



**SCTKSB106**  
2" B.S. 1,760KGS  
1,760LBS

**Overcenter Buckle**



**SCTKOB001**  
1" B.S. 500KGS  
500LBS



**SCTKOB002**  
1-3/4" B.S. 6,000KGS  
6,000LBS



**SCTKOB003**  
1-3/4" B.S. 6,000KGS  
6,000LBS



**SCTKOB003A**  
1-3/4" B.S. 6,000KGS  
6,000LBS



**SCTKOB004**  
2" B.S. 3,300KGS  
3,300LBS



**SCTKOB005**  
2" B.S. 1,760KGS  
1,760LBS

**Stainless Steel Overcenter Buckle**



**SCTKSB101**  
1-3/4" B.S. 2,500KGS  
2,500LBS



**SCTKSB102**  
1-3/4" B.S. 3,000KGS  
3,000LBS



**SCTKSB103**  
1-3/4" B.S. 1,760KGS  
1,760LBS



**SCTKSB007**  
2" B.S. 4,400KGS  
4,400LBS



**SCTKSB008**  
2" B.S. 4,400KGS  
4,400LBS



**SCTKSB009**  
2" B.S. 6,600KGS  
6,600LBS

**Stainless Steel Ratchet Buckle**



**SCTKSB001**  
1" B.S. 1,700KGS  
1,700LBS



**SCTKSB002**  
1-1/16" B.S. 3,300KGS  
3,300LBS



**SCTKSB003**  
1-1/16" B.S. 3,300KGS  
3,300LBS



**SCTKSB004**  
1-1/2" B.S. 4,400KGS  
4,400LBS



**SCTKSB005**  
1-1/2" B.S. 5,500KGS  
5,500LBS



**SCTKSB006**  
1-1/2" B.S. 6,600KGS  
6,600LBS



**SCTKSB010**  
2" B.S. 6,600KGS  
6,600LBS



**SCTKKB010**  
30MM B.S. 3,000KGS  
6,600LBS



**SCTKKB011**  
40MM B.S. 4,000KGS  
8,820LBS



**SCTKKB012**  
40MM B.S. 5,000KGS  
11,000LBS

**One Way Buckle**



**SCTKKB001**  
1-1/2" B.S. 1,600KGS  
3,530LBS



**SCTKKB002**  
2" B.S. 1,800KGS  
4,000LBS



**SCTKKB003**  
2" B.S. 2,000KGS  
4,400LBS



**SCTKKB013**  
42MM B.S. 7,000KGS  
15,400LBS



**SCTKKB014**  
42MM B.S. 8,000KGS  
17,600LBS



**SCTKKB015**  
50MM B.S. 5,000KGS  
11,000LBS



**SCTKKB004**  
2" B.S. 2,000KGS  
4,400LBS



**SCTKKB005**  
1" B.S. 3,000KGS  
6,600LBS



**SCTKKB006**  
1-1/2" B.S. 4,000KGS  
8,820LBS



**SCTKKB016**  
50MM B.S. 6,000KGS  
13,200LBS



**SCTKKB017**  
50MM B.S. 10,000KGS  
22,000LBS



**SCTKKB018**  
53MM B.S. 12,000KGS  
26,500LBS



**SCTKKB007**  
2" B.S. 5,000KGS  
11,000LBS



**SCTKKB008**  
30MM B.S. 2,000KGS  
4,400LBS



**SCTKKB009**  
30MM B.S. 3,000KGS  
6,600LBS



**SCTKKB039**  
40-50MM B.S. 5,000KGS  
11,000LBS



**SCTKKB040**  
75MM B.S. 5,000KGS  
11,000LBS

**Slide Buckle & Bolt Plate & Other Buckle**



**SCTKKB101**  
B.S. 2,270KGS  
5,000LBS



**SCTKKB102**  
B.S. 2,270KGS  
5,000LBS



**SCTKKB103**  
B.S. 2,270KGS  
5,000LBS



**SCTKKB305**  
B.S. 755KGS  
1,665LBS



**SCTKKB306**



**SCTKKB307**



**SCTKKB104**  
B.S. 2,270KGS  
5,000LBS



**SCTKKB105**  
B.S. 2,270KGS  
5,000LBS



**SCTKKB201**  
1-3/4" B.S. 1,000KGS  
2,200LBS



**SCTKKB308**



**SCTKKB309**



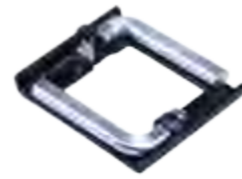
**SCTKKB310**



**SCTKKB202**  
2" B.S. 600KGS  
1,320LBS



**SCTKKB204**  
1" B.S. 800KGS  
1,760LBS



**SCTKKB301**  
2" B.S. 1,800KGS  
4,000LBS



**SCTKKB311**



**SCTKKB312**  
19MM 25MM



**SCTKKB313**  
25MM



**SCTKKB302**  
B.S. 900KGS  
1,980LBS



**SCTKKB303**  
3" B.S. 1,500KGS  
3,300LBS



**SCTKKB304**  
2" B.S. 900KGS  
1,980LBS



**SCTKKB314**  
35MM

# 3. Cargo Hook



## S Hook



**SCTKWH009**  
B.S. 680KGS  
1,500LBS



**SCTKWH010**  
B.S. 1,000KGS  
2,200LBS



**SCTKWH012**  
B.S. 680KGS  
1,500LBS



**SCTKSH013**  
B.S. 680KGS  
1,500LBS



**SCTKWH014**  
B.S. 800KGS  
1,760LBS



**SCTKWH015**  
B.S. 1,000KGS  
2,200LBS



**SCTKSH016**  
B.S. 1,200KGS  
2,650LBS



**SCTKWH017**  
B.S. 500KGS  
1,100LBS



**SCTKWH018**  
B.S. 500KGS  
1,100LBS



**SCTKSH019**  
B.S. 1,500KGS  
3,300LBS

**Wire Hook**



**SCKTWH003**  
1-1/2", 35MM  
B.S. 3,000KGS  
6,600LBS



**SCKTWH002**  
1-1/16", 28MM  
B.S. 1,500KGS  
3,300LBS



**SCKTWH001**  
1", 25MM  
B.S. 800KGS  
1,760LBS



**SCKTWH018**  
2", 50MM  
B.S. 4,536KGS  
10,000LBS



**SCKTWH021**  
2", 50MM  
B.S. 2,500KGS  
5,500LBS



**SCKTWH022**  
2", 50MM  
B.S. 5,000KGS  
11,000LBS



**SCKTWH005**  
2", 50MM  
B.S. 5,000KGS  
11,000LBS



**SCKTWH006**  
2", 50MM  
B.S. 5,000KGS  
11,000LBS



**SCKTWH007**  
3", 75MM  
B.S. 10,000KGS  
22,000LBS



**SCKTWH008**  
4", 100MM  
B.S. 10,000KGS  
22,000LBS



**SCKTWH013**  
2", 50MM  
B.S. 5,000KGS  
11,000LBS



**SCKTWH014**  
1-1/2", 35MM  
B.S. 3,000KGS  
6,600LBS



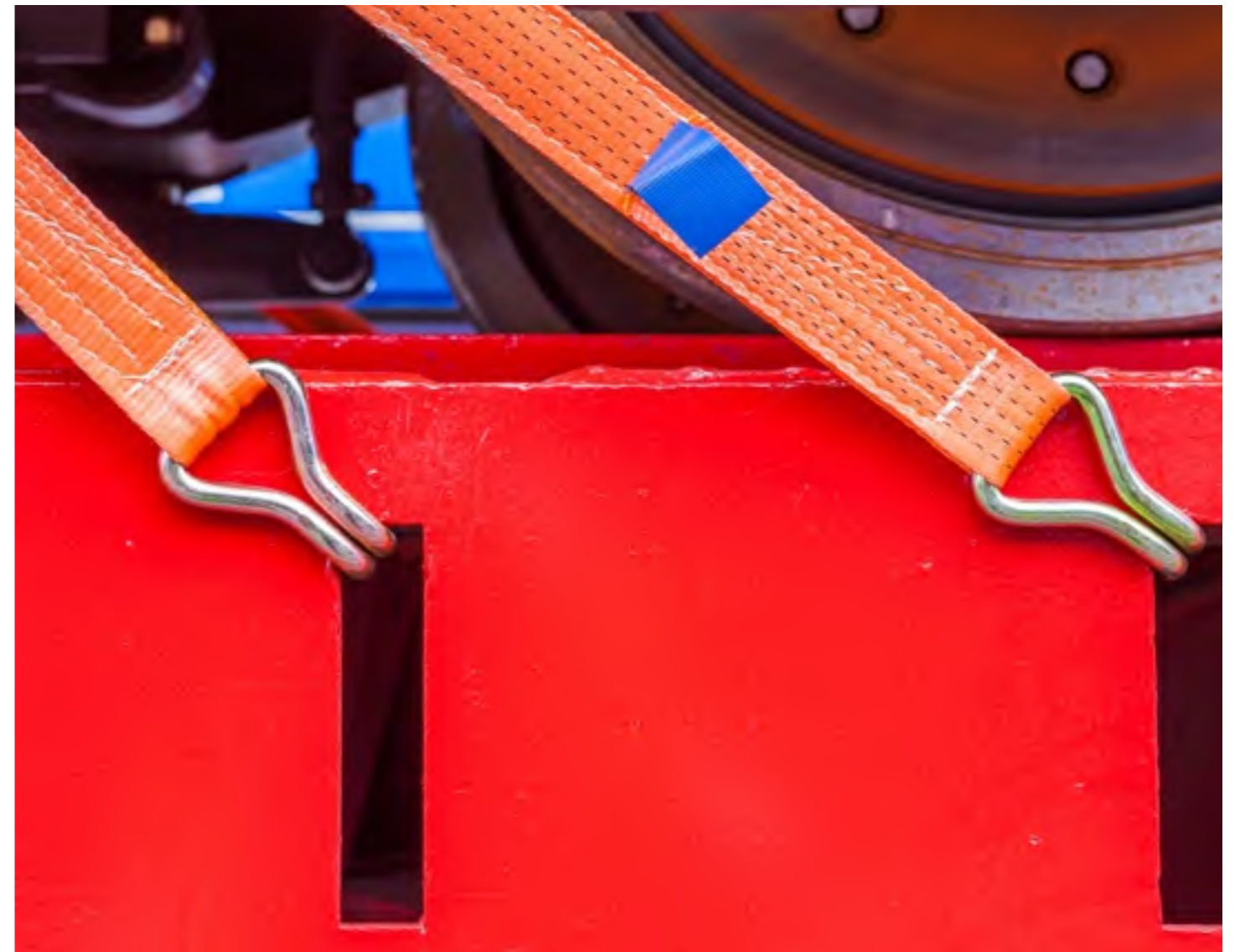
**SCKTWH015**  
1-1/2", 25MM  
B.S. 3,000KGS  
6,600LBS



**SCKTWH016**  
2", 50MM  
B.S. 5,000KGS  
11,000LBS



**SCKTWH017**  
1-1/2", 35MM  
B.S. 3,000KGS  
6,600LBS





**Flat Hook**



**SCTKFH001**  
B.S. 800KGS  
1,760LBS



**SCTKFH002**  
B.S. 800KGS  
1,760LBS



**SCTKFH003**  
B.S. 800KGS  
1,760LBS



**SCTKFH013**  
B.S. 1,200KGS  
2,650LBS



**SCTKFH014**  
B.S. 900KGS  
1,980LBS



**SCTKFH015**  
2"B.S. 4,536KGS  
10,000LBS



**SCTKFH004**  
B.S. 800KGS  
1,760LBS



**SCTKFH005**  
B.S. 1,200KGS  
2,650LBS



**SCTKFH006**  
B.S. 5,000KGS  
11,000LBS



**SCTKFH016**  
3"B.S. 7,355KGS 16,200LBS  
4"B.S. 7,355KGS 16,200LBS



**SCTKFH017**  
B.S. 3,000KGS  
6,600LBS

**Snap Hook**



**SCTKFH007**  
B.S. 2,500KGS  
5,500LBS



**SCTKFH008**  
B.S. 2,500KGS  
5,500LBS



**SCTKFH009**  
B.S. 2,000KGS  
4,400LBS



**SCTKSH001**  
1.5" B.S. 3,000KGS  
6,600LBS



**SCTKSH002**  
1.5" B.S. 3,000KGS  
6,600LBS



**SCTKSH003**  
2" B.S. 3,000KGS  
6,600LBS



**SCTKFH010**  
B.S. 2,500KGS  
5,500LBS



**SCTKFH011**  
B.S. 3,000KGS  
6,600LBS



**SCTKFH012**  
2" B.S. 5,000KGS  
11,000LBS



**SCTKSH004**  
B.S. 1,500KGS  
3,300LBS



**SCTKSH005**  
B.S. 1,500KGS  
3,300LBS



**SCTKSH006**  
B.S. 5,000KGS  
11,000LBS



**SCKSH007**  
2" B.S. 5,000KGS  
11,000LBS



**SCKSH008**  
2" B.S. 5,000KGS  
11,000LBS



**SCKSH020**  
3/4"x3-3/4"  
3/4"x3-3/4"



**SCKSH021**  
1"x4"  
1-8"x5"



**SCKKKR012**  
3"x3"x5/8"  
B.S. 8,160KGS  
18,000LBS



**SCKKKR013**  
3"x3"x1"  
B.S. 21,300KGS  
47,000LBS



**SCKKKR014**  
3"x3"x1"  
B.S. 12,000KGS  
47,000LBS

**D Ring**



**SCKKKR003**  
B.S. 1,360KGS  
3,000LBS



**SCKKKR004**  
B.S. 5,440KGS  
12,000LBS



**SCKKKR005**  
B.S. 800KGS  
1,760LBS



**SCKKKR016**  
B.S. 5,000KGS  
11,000LBS



**SCKKKR017**  
B.S. 8,160KGS  
18,000LBS



**SCKKKR018**  
B.S. 10,000KGS  
22,000LBS



**SCKKKR006**  
B.S. 1,000KGS  
2,200LBS



**SCKKKR007**  
B.S. 2,270KGS  
5,000LBS



**SCKKKR008**  
B.S. 2,270KGS  
5,000LBS



**SCKKKR022**



**SCKKKR023**



**SCKKKR024**

**Forged D Ring**



**SCKKKR009**  
2-1/2"x2-1/4"x1/2"  
B.S. 5,440KGS  
12,000LBS



**SCKKKR010**  
3"x3"x1"  
B.S. 21,300KGS  
47,000LBS



**SCKKKR011**  
3"x3"x3/4"  
B.S. 12,000KGS  
26,500LBS



**SCKKKR025**



**SCKKKR026**



**SCKKKR027**



**SCKWH025**



**SCKTSH113**  
2", 50MM  
B.S. 3,000KGS  
6,600LBS

**Stainless Steel Hook**



**SCKTSH103**  
1", 25MM  
B.S. 800KGS  
1,760LBS



**SCKTSH104**  
1", 28MM  
B.S. 1,000KGS  
2,200LBS



**SCKTSH106**  
1-1/2", 35MM  
B.S. 2,000KGS  
4,400LBS



**SCKTSH107**  
2", 50MM  
B.S. 2,000KGS  
4,400LBS



**SCKTSH108**  
2", 50MM  
B.S. 3,000KGS  
6,600LBS



**SCKTSH109**  
2", 50MM  
B.S. 800KGS  
1,760LBS



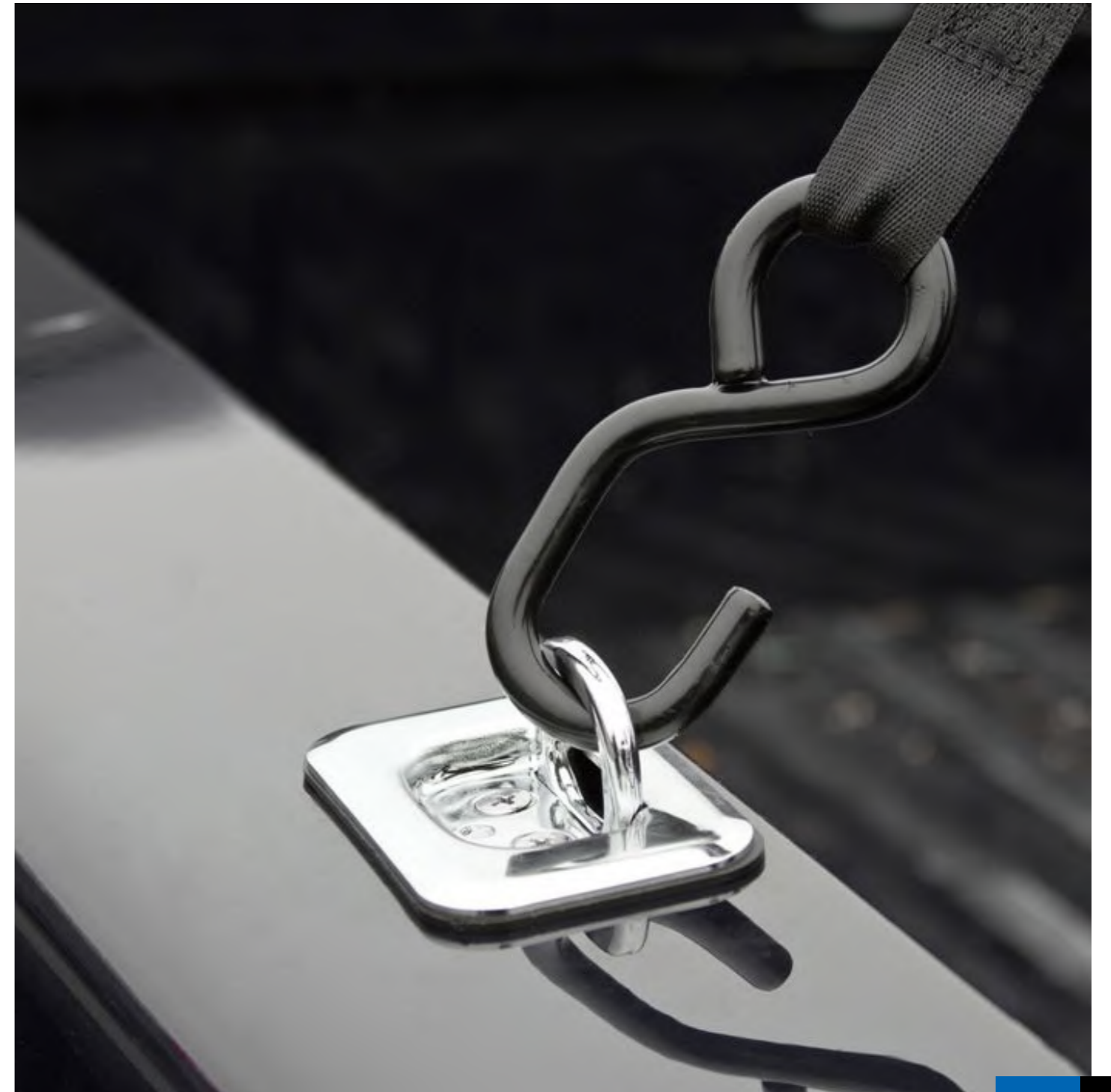
**SCKTSH110**  
2", 50MM  
B.S. 1,000KGS  
2,200LBS



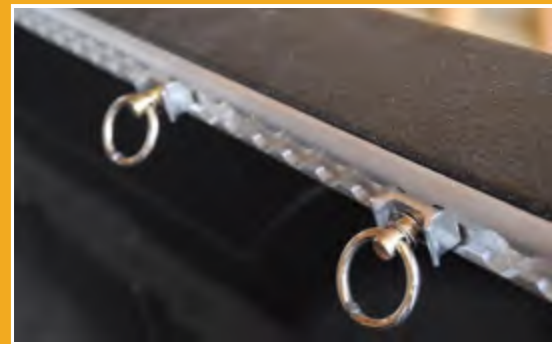
**SCKTSH111**  
2", 50MM  
B.S. 1,360KGS  
3,300LBS



**SCKTSH112**  
2", 50MM  
B.S. 200KGS  
4,400LBS



# 4. E Track & Accessories



## L Track



**SCKLT001**  
L-Track



**SCKLT002**  
L-Track  
6",12",24",48",72"



**SCKLT003**  
L-Track  
6",12",24",48"



**SCKLT004**



**SCKLT005**



**SCKLT006**



**SCKLT007**



**SCKLT008**

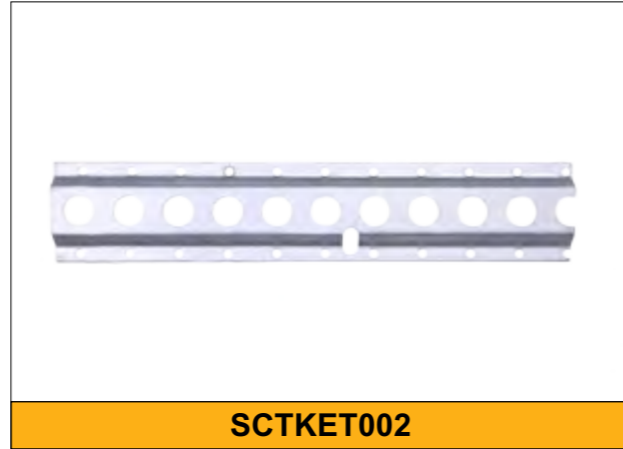


**SCKLT009**

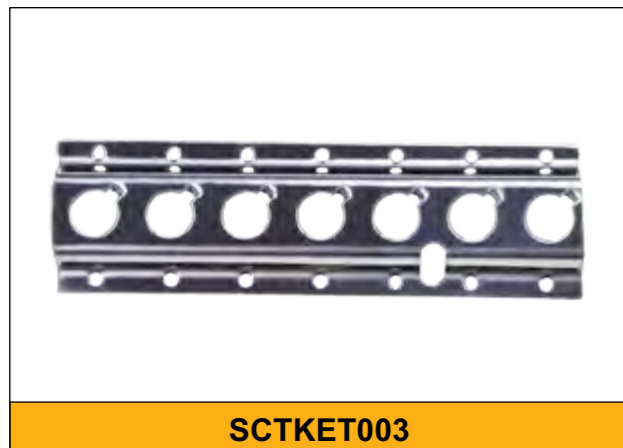
**E Track Rail Systems**



**SCTKET001**



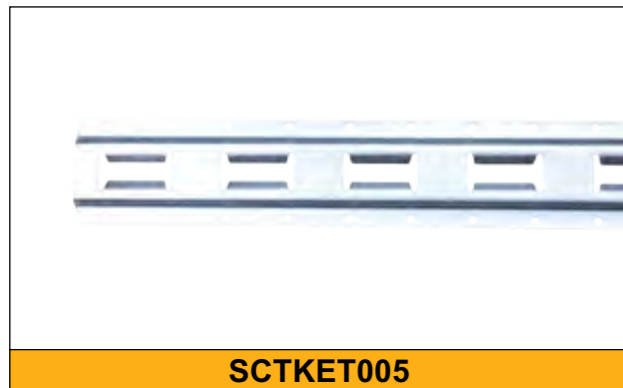
**SCTKET002**



**SCTKET003**



**SCTKET004**



**SCTKET005**



**SCTKET007**



**SCTKEA001**



**SCTKEA002**



**SCTKEA004**



**SCTKEA005**



**SCTKEA006**



**SCTKEA007**



**SCTKEA008**



**SCTKEA009**



**SCTKEA010**



**SCTKDB201/3.0**



**SCTKDB202**



**SCTKPW102**



SCTKEA011



SCTKEA015



SCTKEA016



SCTKEA026



SCTKEA027



SCTKEA028



SCTKEA017



SCTKEA018



SCTKEA019



SCTKEA029



SCTKKPF3001



SCTKKPF3002



SCTKEA020



SCTKEA021



SCTKEA022



SCTKKPF3022-1



SCTKKPF3022-2



SCTKKPF3022-3



SCTKEA023



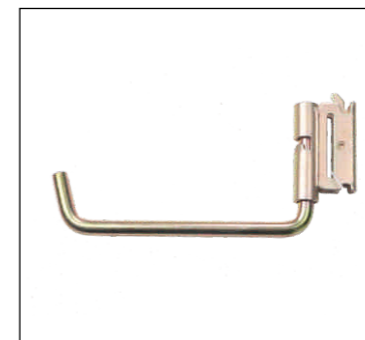
SCTKEA024



SCTKEA025



SCTKKPF3005-1



SCTKKPF3005-2



SCTKKPF3006-1



**SCTKKPF3006-2**



**SCTKKPF3006-3**



**SCTKKPF3033**



**SCTMKPF3503**



**SCTKKPF3505**



**SCTKKPF3506**



**SCTKKPF3008**



**SCTKKPF3009**



**SCTKKPF3010**



**SCTKKPF3019**



**SCTKKPF3027**



**SCTKKPF3028**



**SCTKKPF3029**



**SCTKKPF3031**



**SCTKKPF3032**

E Track Ratchet Straps & Cam Straps





## Bars & Beams



Steel Cargo Bar Standard, 38MM Tube				
Item No.	Dia (in)	Length (in)	Weight (kgs)	Foot Pads
SCTKKSCB381	1.5"	46"-61"	3.7	2"x4" Plastic
SCTKKSCB382	1.5"	60"-75"	4.1	2"x4" Plastic
SCTKKSCB383	1.5"	82.5"-97.5"	4.9	2"x4" Plastic
SCTKKSCB384	1.5"	89"-104"	5.1	2"x4" Plastic
SCTKKSCB385	1.5"	92.5"-107.5"	5.35	2"x4" Plastic
SCTKKSCB386	1.5"	101"-116"	5.6	2"x4" Plastic
SCTKKSCB387	1.5"	103"-118"	5.7	2"x4" Plastic

Aluminum Cargo Bar Standard, 38MM Tube				
Item No.	Dia (in)	Length (in)	Weight (kgs)	Foot Pads
SCTKKACB381	1.5"	46"-61"	3.0	2"x4" Plastic
SCTKKACB382	1.5"	60"-75"	3.3	2"x4" Plastic
SCTKKACB383	1.5"	82.5"-97.5"	3.8	2"x4" Plastic
SCTKKACB384	1.5"	89"-104"	3.9	2"x4" Plastic
SCTKKACB385	1.5"	92.5"-107.5"	4.1	2"x4" Plastic
SCTKKACB386	1.5"	101"-116"	4.2	2"x4" Plastic
SCTKKACB387	1.5"	103"-118"	4.3	2"x4" Plastic

Steel Cargo Bar Standard, 38MM Tube with Spring				
Item No.	Dia (mm)	Length (mm)	Weight (kgs)	Foot Pads
SCTKKSCB383B	38	2100-2470	5.1	2"x4" plastic
SCTKKSCB384B	38	2260-2630	5.3	2"x4" plastic
SCTKKSCB385B	38	2350-2720	5.4	2"x4" plastic
SCTKKSCB386B	38	2565-2935	5.85	2"x4" plastic

Aluminum Cargo Bar Standard, 38MM Tube with Spring				
Item No.	Dia (mm)	Length (mm)	Weight (kgs)	Foot Pads
SCTKKACB383B	38	2100-2470	4.1	2"x4" Plastic
SCTKKACB384B	38	2260-2630	4.25	2"x4" Plastic
SCTKKACB385B	38	2350-2720	4.35	2"x4" Plastic
SCTKKACB386B	38	2565-2935	4.5	2"x4" Plastic



Steel Cargo Bar Standard, 42MM Tube				
Item No.	Dia (in)	Length (in)	Weight (kgs)	Foot Pads
SCTKKSCB424	1.65"	89"-104"	5.45	2"x4" Plastic
SCTKKSCB425	1.65"	92.5"-107.5"	5.6	2"x4" Plastic
SCTKKSCB426	1.65"	101"-116"	5.9	2"x4" Plastic

Aluminum Cargo Bar Standard, 42MM Tube				
Item No.	Dia (in)	Length (in)	Weight (kgs)	Foot Pads
SCTKKACB424	1.65"	89"-104"	4.05	2"x4" Plastic
SCTKKACB425	1.65"	92.5"-107.5"	4.2	2"x4" Plastic
SCTKKACB426	1.65"	101"-116"	4.5	2"x4" Plastic

Steel Cargo Bar Standard, 42MM Tube with Spring				
Item No.	Dia (mm)	Length (mm)	Weight (kgs)	Foot Pads
SCTKKSCB424B	42	2260-2630	5.5	2"x4" Plastic
SCTKKSCB425B	42	2350-2720	5.7	2"x4" Plastic
SCTKKSCB426B	42	2565-2935	6.2	2"x4" Plastic

Aluminum Cargo Bar Standard, 42MM Tube with Spring				
Item No.	Dia (mm)	Length (mm)	Weight (kgs)	Foot Pads
SCTKKSCB423B	42	2100-2470	4.25	2"x4" Plastic
SCTKKSCB424B	42	2260-2630	4.4	2"x4" Plastic
SCTKKSCB425B	42	2350-2720	4.5	2"x4" Plastic
SCTKKSCB426B	42	2565-2935	4.65	2"x4" Plastic
SCTKKSCB427B	42	2620-3000	4.75	2"x4" Plastic

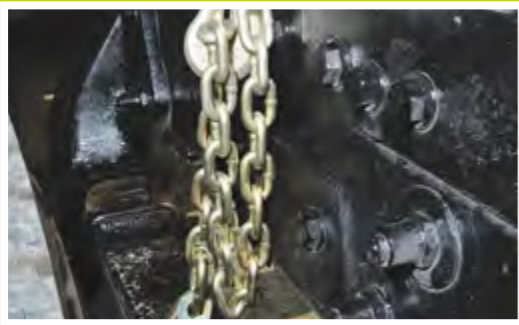


Cargo Plank & Parting Wall Lock				
Item No.	Length (mm)	Weight (kgs)	Outer Tube Size (mm)	Technology
SCTKKPW01	2400-2700	10	125×30	Casting Fitting
SCTKKPW02	2400-2700	7.9	125×30	Casting Fitting
SCTKKPW03	2400-2700	7.4	125×30	Stamping Fitting

Standard Heavy Duty Decking Beam				
Item No.	Length (in)	Weight (kgs)	WLL (lbs)	Material
SCTKKDB101H	86"-97"	7.4	2000	Aluminum
SCTKKDB102H	86"-97"	8.4	3000	Aluminum
SCTKKDB103H	86"-97"	11.1	3000	Steel
SCTKKDB104H	91"-102"	7.8	2000	Aluminum
SCTKKDB105H	91"-102"	8.8	3000	Aluminum
SCTKKDB106H	91"-102"	11.7	3000	Steel



# 5. E Transport Chain & Hook & Binder



Zinc Plated Clevis Slip Hook				
Item No.	Chain Size (in)		WLL (lbs)	
G43	G70		Carbon Steel	Alloy Steel
SCTKCH001	SCTKCH101	1/4	1950	3150
SCTKCH002	SCTKCH102	5/16	2875	4700
SCTKCH003	SCTKCH103	3/8	4000	6600
SCTKCH004	SCTKCH104	7/16	5000	8750
SCTKCH005	SCTKCH105	1/2	6500	11300
SCTKCH006	SCTKCH106	5/8	9250	15800
SCTKCH007	SCTKCH107	3/4	12500	24700

Min. Breaking Strength=4×WLL



Zinc Plated Clevis Grab Hook				
Item No.	Chain Size (in)		WLL (lbs)	
G43	G70		Carbon Steel	Alloy Steel
SCTKCH201	SCTKCH301	1/4	2600	3150
SCTKCH202	SCTKCH302	5/16	3900	4700
SCTKCH203	SCTKCH303	3/8	5400	6600
SCTKCH204	SCTKCH304	7/16	7200	8750
SCTKCH205	SCTKCH305	1/2	9200	11300
SCTKCH206	SCTKCH306	5/8	12750	15800
SCTKCH207	SCTKCH307	3/4	18500	24700

Min. Breaking Strength=4×WLL

## G70 Transport Chain with Clevis Grab Hooks

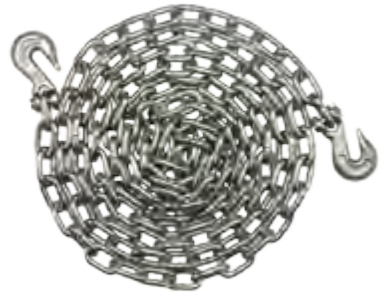


Item No.	Size
SCTKKC101	5/16" × 16'
SCTKKC102	5/16" × 20'
SCTKKC103	5/16" × 25'



Item No.	Size
SCTKKC201	3/8" × 16'
SCTKKC202	3/8" × 20'
SCTKKC203	3/8" × 25'

## G70 Short Link Chain with Clevis Grab Hooks



Item No.	Size
SCTKKC301	5/16" × 16'
SCTKKC302	5/16" × 20'
SCTKKC303	5/16" × 25'



Trailer Chain	
Item No.	Size
SCTKTC202	3/16" × 48"
SCTKTC203	1/4" × 48"
SCTKTC204	5/16" × 48"

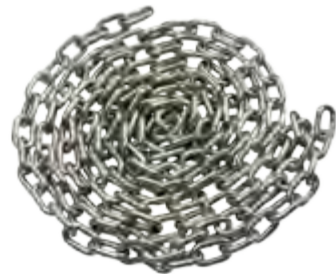


Item No.	Size
SCTKKC401	3/8" × 16'
SCTKKC402	3/8" × 20'
SCTKKC403	3/8" × 25'



Chain Anchors	
Item No.	Size
SCTKCA002	2" × 18"
SCTKCA003	3" × 18"
SCTKCA004	4" × 18"

## G70 Transport Chain



Item No.	Size	Ft / Drum
SCTKKC001	5/16"	550'
SCTKKC002	3/8"	400'
SCTKKC003	1/2"	200'

## G70 Short Link Chain



Item No.	Size	Ft / Drum
SCTKKC004	5/16"	550'
SCTKKC005	3/8"	400'
SCTKKC006	1/2"	200'



Truck Chain	
Item No.	Size
SCTKKSTC01	11R22
SCTKKSTC02	11R24.5



### Lever Type Load Binder

Item No.	Chain Size Min-Max (in)	WLL (lbs)	Proof Load (lbs)	Min Ultimate Load (lbs)
SCTKLB001	1/4-5/16	2200	4400	7800
SCTKLB002	5/16-3/8	5400	10800	19000
SCTKLB003	3/8-1/2	9200	18400	33000
SCTKLB004	1/2-5/8	13000	22000	46000
SCTKLB002A	5/16-3/8	6600	13200	19800



### Ratchet Type Load Binder

Item No.	Chain Size Min-Max (in)	WLL (lbs)	Proof Load (lbs)	Min Ultimate Load (lbs)
SCTKLB005	1/4-5/16	2200	4400	7800
SCTKLB006	5/16-3/8	5400	10800	19000
SCTKLB007A	3/8-1/2	9200	18400	33000
SCTKLB008	1/2-5/8	13000	22000	46000
SCTKLB006A	5/16-3/8	6600	13200	19800



### Ratchet Type Load Binder with Wing & Pin Hook Safety Lock in Barrel

Item No.	Chain Size Min-Max (mm)	WLL (lbs)	Proof Load (lbs)	Min Ultimate Load (lbs)
SCTKLB009	6	2200	4400	7800
SCTKLB010	8	5400	10800	19000
SCTKLB011	10	9200	18400	33000
SCTKLB012	13	13000	26000	46000
SCTKLB013	16	24000	48000	72000



### Ratchet Type Load Binder

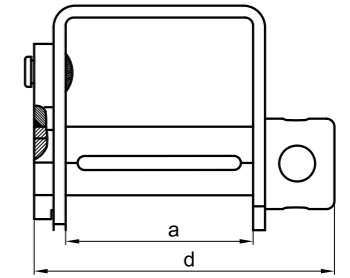
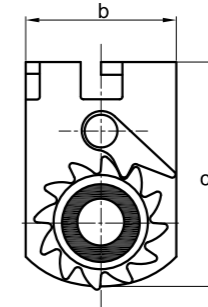
Item No.	Chain Size Min-Max (in)	WLL (lbs)	Proof Load (lbs)	Min Ultimate Load (lbs)
SCTKLB014	5/16-3/8	5400	10800	19000



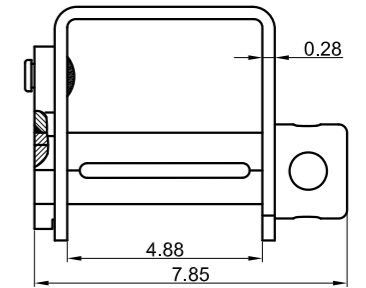
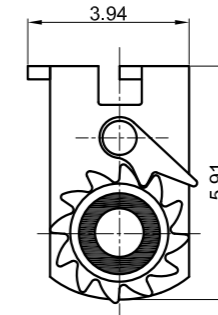
# 6. Winch & Winch Bar



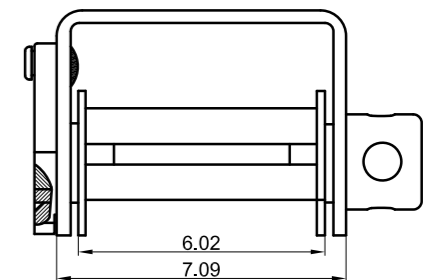
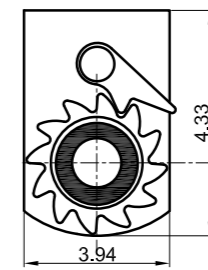
## Winch



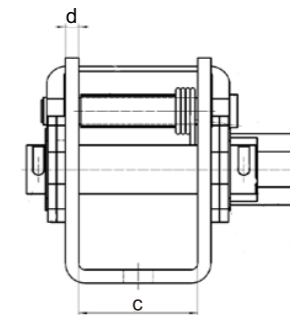
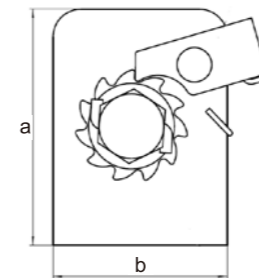
Item No.	Size (a×b×c / a×b×c)	Size (d)
SCTKKW013-1	124 × 100 × 133mm / 4.88" × 3.94" × 5.24"	7.85"
SCTKKW013-2	124 × 100 × 150mm / 4.88" × 3.94" × 5.91"	7.85"
SCTKKW013-3	124 × 100 × 175mm / 4.88" × 3.94" × 6.89"	7.85"



**SCTKKW013-4**



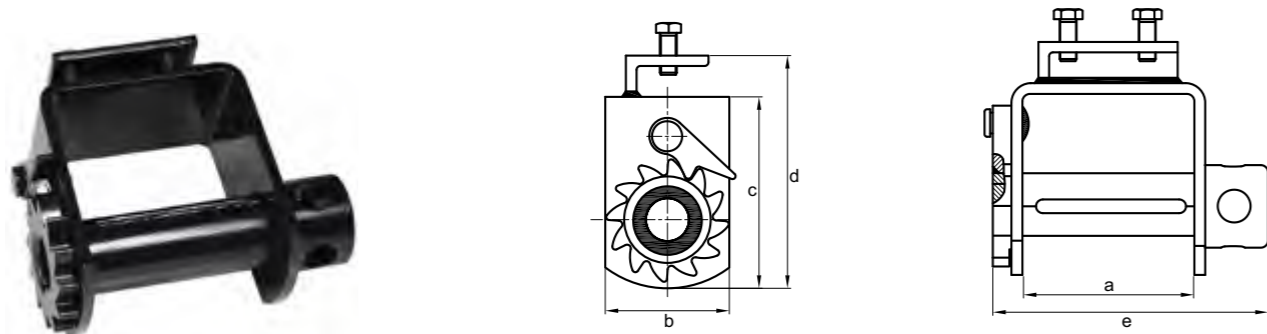
**SCTKKW007**  
153 × 100 × 110mm  
6.02" × 3.94" × 4.33"



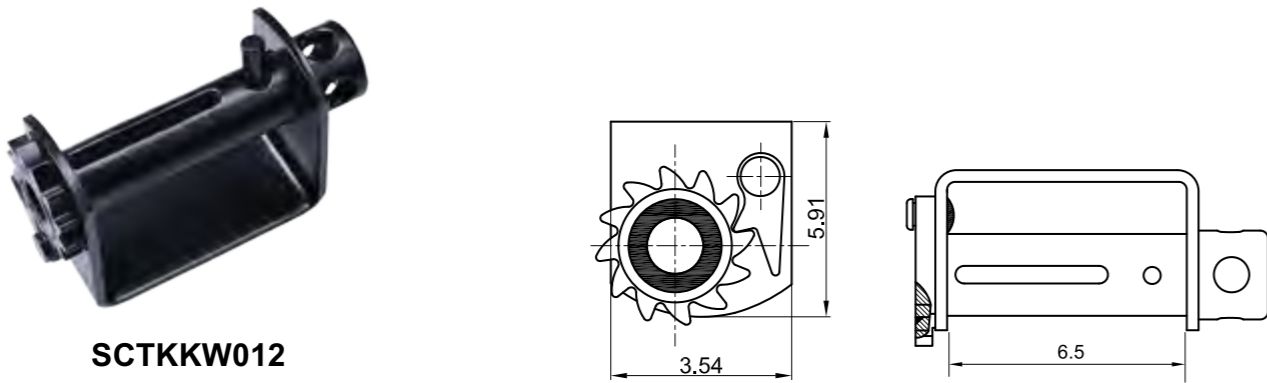
**SCTKKW001**  
L=54 H=102 W=75

Item No.	Size (a×b×c)	Size (d)
SCTKKW001-L	102×75×54mm	6mm
SCTKKW001-R	102×75×54mm	6mm

## Profile Portable Winch

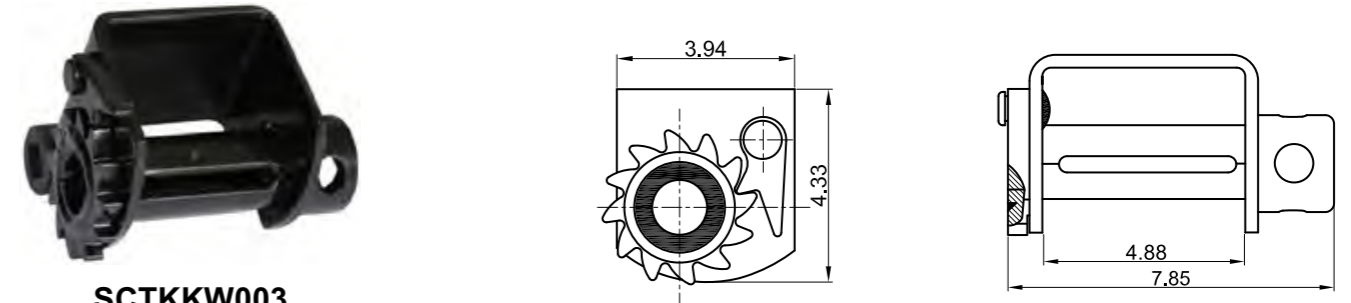


Item No.	Size (a×b×c / a×b×c)	Size (d)	Size (e)
SCTKKW002	124 × 100 × 110mm / 4.88" × 4" × 4.33"	5.56"	7.75"
SCTKKW009	124 × 90 × 140mm / 4.88" × 3.54" × 5.51"	6.69"	7.85"
SCTKKW015	124 × 90 × 160mm / 4.88" × 3.54" × 6.3"	7.48"	7.85"

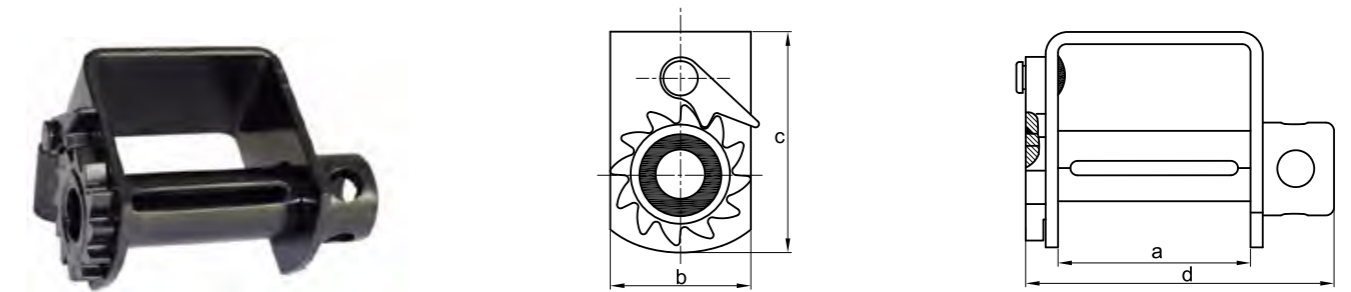


**SCTKKW012**  
165 × 90 × 150 mm  
6.5" × 3.54" × 5.91"

## Weld Winch

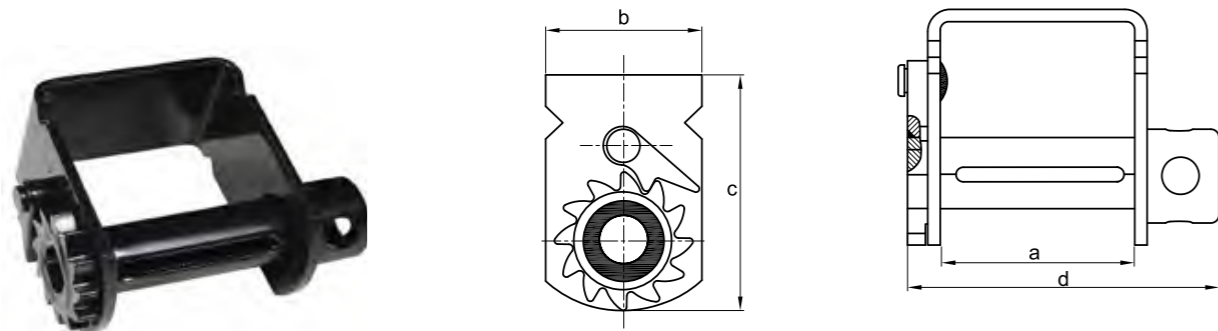


**SCTKKW003**  
124 × 100 × 110 mm  
4.88" × 3.94" × 4.33"



Item No.	Size (a×b×c / a×b×c)	Size (d)
SCTKKW004	124 × 90 × 140mm / 4.88" × 3.54" × 5.51"	7.72"
SCTKKW005	124 × 90 × 160mm / 4.88" × 3.54" × 6.3"	7.85"

## Notched Sliding Winch



Item No.	Size (a×b×c / a×b×c)	Size (d)
SCTKKW006	124 × 100 × 190mm / 4.88" × 3.94" × 7.48"	7.85"
SCTKKW008	124 × 100 × 140mm / 4.88" × 3.94" × 5.5"	7.85"
SCTKKW016	124 × 100 × 152mm / 4.88" × 3.94" × 5.98"	7.85"
SCTKKW017	124 × 100 × 170mm / 4.88" × 3.94" × 6.69"	7.85"



**SCTKFB101**  
Light Duty Coil Rack

**SCTKFB102**

**SCTKWB001**



**SCTKWB002**



**SCTKWB003**



**SCTKWB004**



**SCTKKW014**  
124×100×110mm  
4.88"×3.94"×4.33"



**SCTKWB005**



**SCTKKW026**



**SCTKKW020**



**SCTKKW021**



**SCTKKW027**



**SCTKKW028**

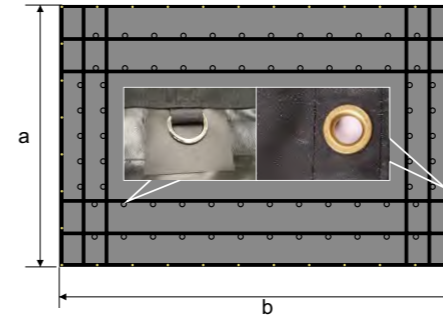




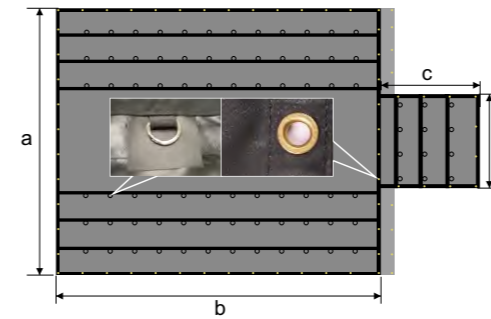
# 7. Tarpaulin & Accessories



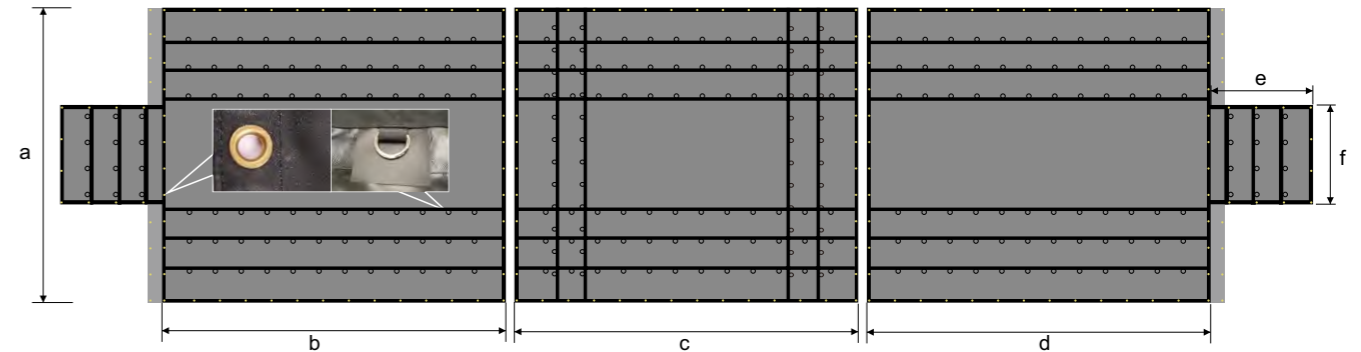
## Lumber Tarp & Steel Tarp



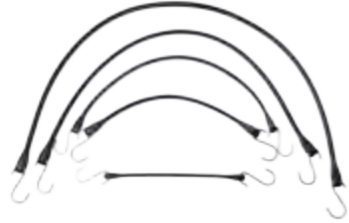
Item No.	Size (a×b)	Fabric Weight	D-rings
SCTKKT002	16' × 24'	14oz or 18oz	2rows
SCTKKT003	16' × 27'	14oz or 18oz	2rows
SCTKKT004	20' × 18'	14oz or 18oz	3rows
SCTKKT005	24' × 18'	14oz or 18oz	3rows
SCTKKT006	17' × 28'	14oz or 18oz	2rows
SCTKKT007	16' × 58'	14oz or 18oz	1rows



Item No.	Size (a×b)	Flap (c×d)	Fabric Weight	D-rings
SCTKKT201	16' × 18'	8' × 4'	14oz or 18oz	2rows
SCTKKT202	20' × 18'	8' × 6'	14oz or 18oz	3rows
SCTKKT203	24' × 18'	8' × 8'	14oz or 18oz	3rows
SCTKKT204	28' × 18'	8' × 10'	14oz or 18oz	4rows
SCTKKT101	16' × 27'	8' × 4'	14oz or 18oz	2rows
SCTKKT103	20' × 27'	8' × 6'	14oz or 18oz	3rows
SCTKKT105	24' × 27'	8' × 8'	14oz or 18oz	4rows
SCTKKT106	28' × 27'	8' × 8'	14oz or 18oz	4rows
SCTKKT107	25' × 28'	8' × 8'	14oz or 18oz	3rows



Item No.	Size (a×b+a×c+a×d)	Flap (e×f)	Fabric Weight	D-rings
SCTKKT301	24' × 18' + 24' × 18' + 24' × 18'	8' × 4'	14oz or 18oz	2rows
SCTKKT302	24' × 18' + 24' × 18' + 24' × 18'	8' × 6'	14oz or 18oz	3rows
SCTKKT303	24' × 18' + 24' × 18' + 24' × 18'	8' × 8'	14oz or 18oz	3rows
SCTKKT304	24' × 18' + 24' × 18' + 24' × 18'	8' × 10'	14oz or 18oz	4rows



Item No.	Size
SCTKTA001	10" Black Rubber Tarp Strap
SCTKTA002	15" Black Rubber Tarp Strap
SCTKTA003	21" Black Rubber Tarp Strap
SCTKTA004	31" Black Rubber Tarp Strap
SCTKTA005	41" Black Rubber Tarp Strap



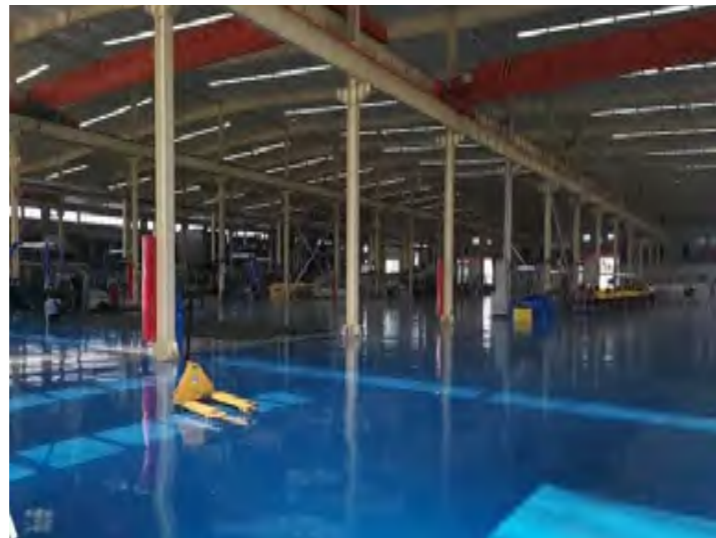
**SCTKMB003**  
Moving Blanket  
Non-woven Polyester 72" x 80"



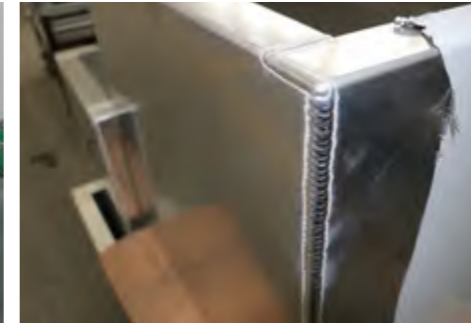
**SCTKMB005**  
Moving Blanket  
Non-woven Polyester 72" x 80"



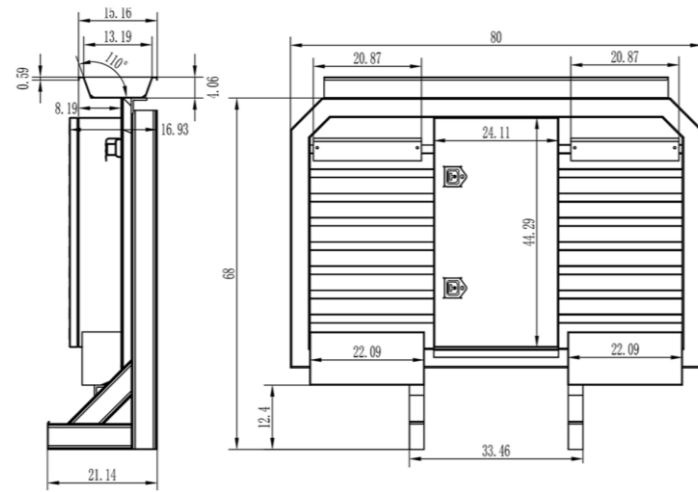
**SCTKMB009**  
50MM PP Webbing



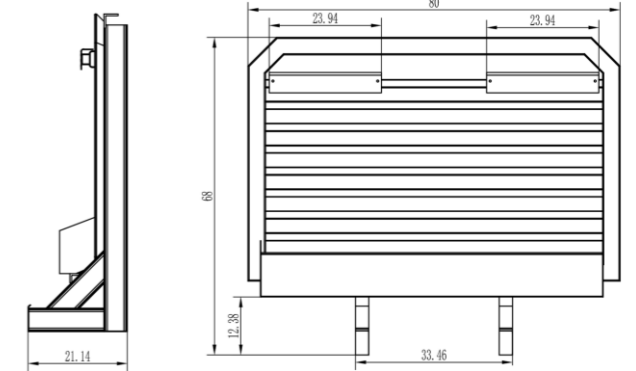
# 8. Headache Racks & Tool Boxes & Guards & Wheels



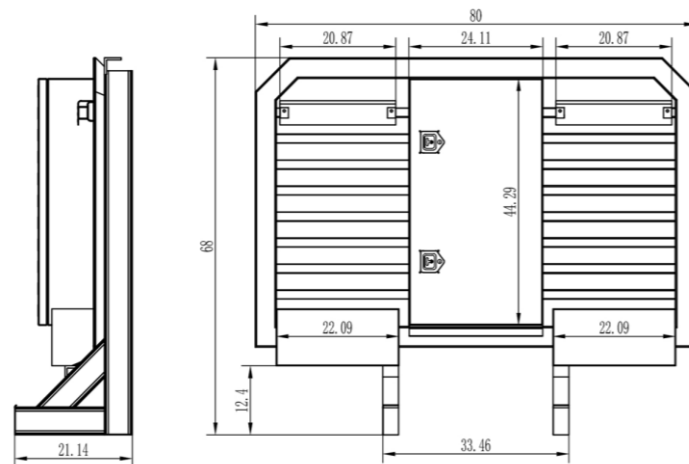
**Headache Racks & Accessories**



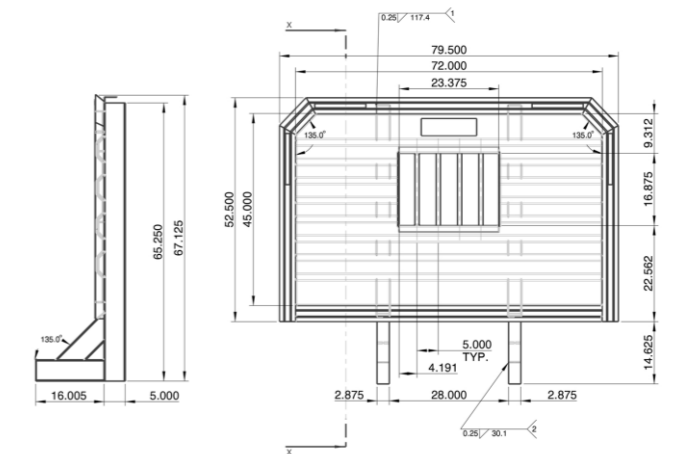
**SCTHR-6880-T**  
Cab Guard w / Center Enclosure & Tarp Tray



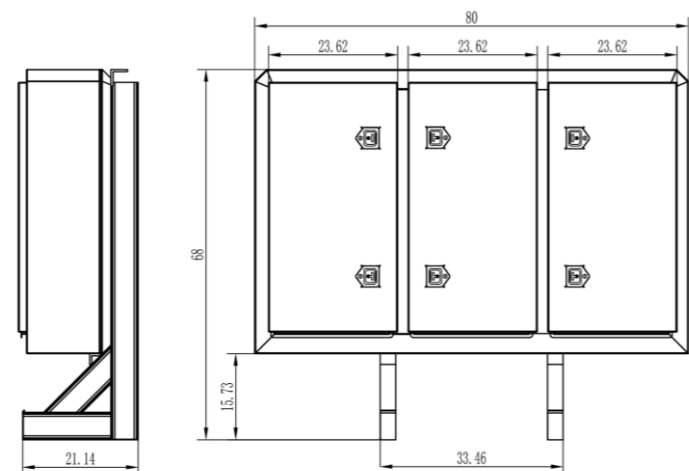
**SCTKKH001-B**  
Cab Guard w/2 Chain Hanger & Full Tray



**SCTKKHR-6880**  
Cab Guard w / Center Enclosure



**SCTKKH001-C**  
Cab Guard Rack with Window



**SCTKKH003**  
Sleeper Cab Vaulted Enclosure w/  
3-Door Compartments



**SCTKKH001-D**



**SCTKKH001-E**

## Tool Box & Brackets



**SCTKKH505**  
Tarp Tray for Head Racks  
w/ 6pcs Brackets



**SCTKKH105**  
4PCS U Bolt Mounting Kit Set



**Aluminum Double Swing Doors Toolbox**  
Surface: Polished



**Aluminum Double Swing Doors Toolbox**  
Surface: Diamond Plate

## Step Box



Step Box			
PART #	SIZE	DESCRIPTION	WEIGHT
SCTKKS-01	22"x28"x12"	12" Step Tool Box-Alum	13.45KGS/29.65LBS
SCTKKS-02	22"x28"x18"	18" Step Tool Box-Alum	17.15KGS/37.81LBS
SCTKKS-03	22"x28"x24"	24" Step Tool Box-Alum	21.3KGS/41.96LBS
SCTKKS-04	22"x28"x30"	30" Step Tool Box-Alum	24.95KGS/55LBS
SCTKKS-05	22"x28"x36"	36" Step Tool Box-Alum	28.7KGS/63.27LBS
SCTKKS-06	22"x28"x48"	48" Step Tool Box-Alum	36KGS/79LBS



**Aluminum Double Swing Doors Toolbox**  
(With Cam LOCK And Heavy Duty)  
Surface: Polished

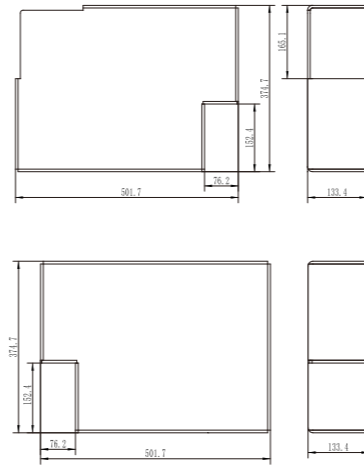
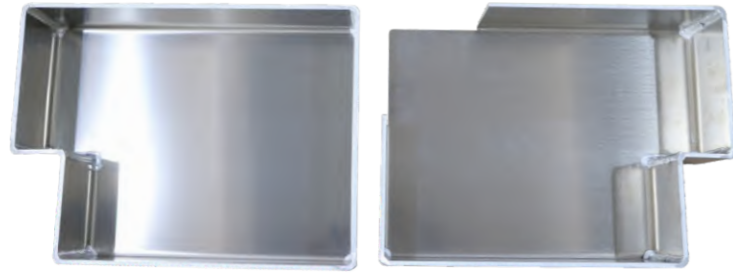


**Aluminum Double Swing Doors Toolbox**  
(With Cam LOCK And Heavy Duty)  
Surface: Diamond Plate



**Tool Box Mounting Brackets in Pair**  
Surface: Black Powder Coated

Item No.	Size	Weight
SCTKT-201	17"x17"	7.55KGS/16.64LBS
SCTKT-202	22"x23"	9.75KGS/21.5LBS
SCTKT-203	22"x34"-10"	15.75KGS/34.72LBS
SCTKT-204	22"x34"-17"	17.6KGS/38.8LBS



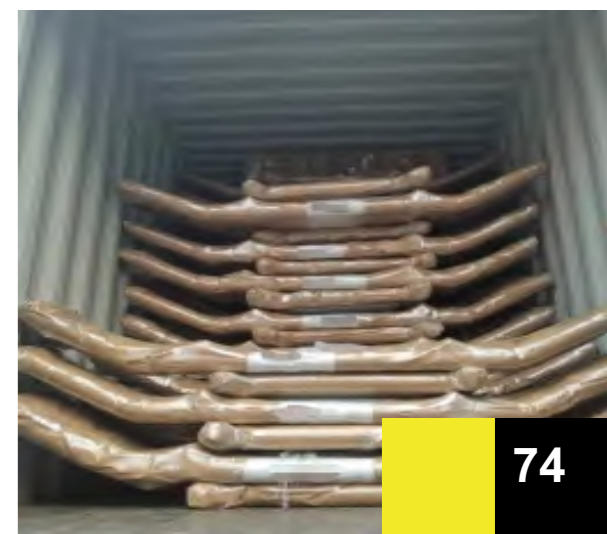
**Standard Wood/Dunnage Holders**  
**Item No.KWHS001**  
**Material:Aluminum**  
**Height:15"×Depth:20"**



## Deer Guards

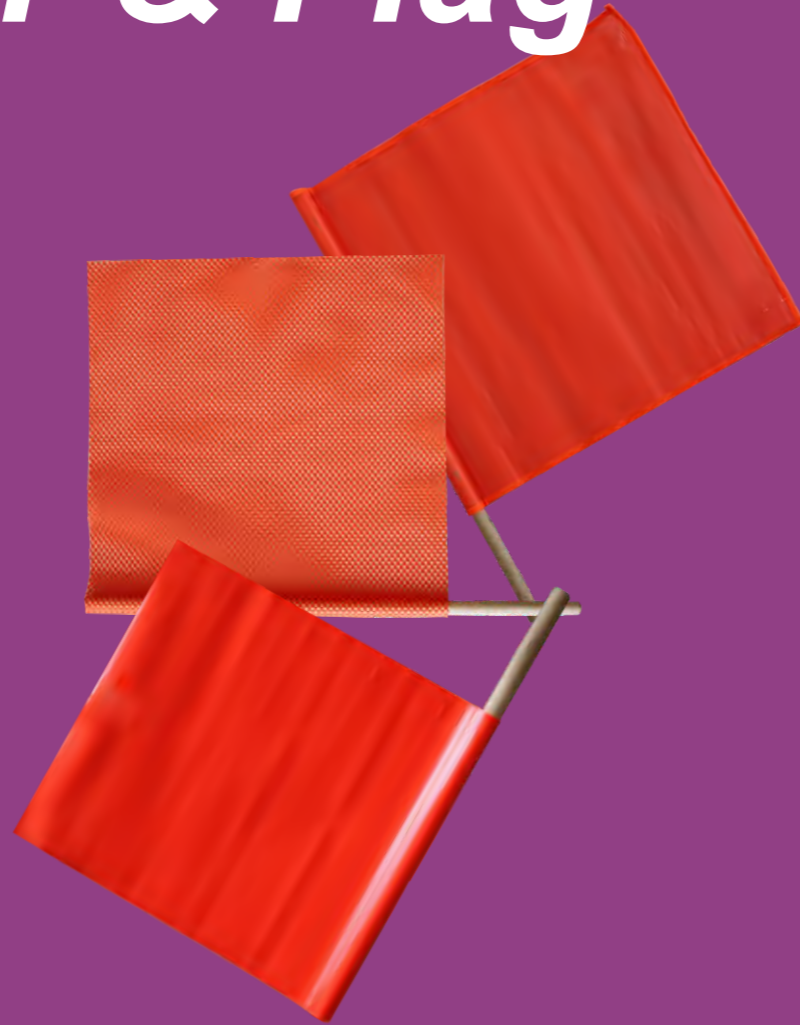
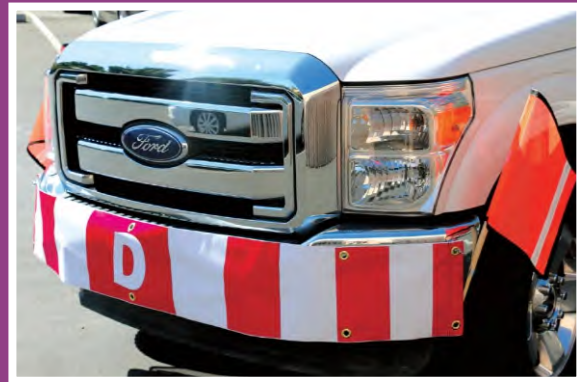


Item No.	Description	Material	Remark
SCTKK19776-1	EX GUARD style Q235A light texture black powder coating (without fitting bracket)	Q235A	2mm thick
SCTKK19777-1	EX GUARD style Q235A light texture black powder coating (without fitting bracket)	Q235A	2mm thick
SCTKK19776-2	EX GUARD style plastic PVC deeping black (without fitting bracket)	Q235A	2mm thick
SCTKK19777-2	EX GUARD style plastic PVC deeping black (without fitting bracket)	Q235A	2mm thick
SCTKK19776-3	EX GUARD style Q235A light texture black powder coating (without fitting bracket)	Q235A	3mm thick
SCTKK19777-3	EX GUARD style Q235A light texture black powder coating (without fitting bracket)	Q235A	3mm thick
SCTKK19776-4	EX GUARD style plastic PVC deeping black (without fitting bracket)	Q235A	3mm thick
SCTKK19777-4	EX GUARD style plastic PVC deeping black (without fitting bracket)	Q235A	3mm thick





# 9. Banner & Flag



## Banner & Flag



SCTKDB001

SCTKDB002

SCTKDB003



SCTKDB112



SCTKMF401



SCTKMF402



SCTKMF403



SCTKMF404



SCTKMF405





**SCTKMF406**



**SCTKMF407**



**SCTKMF001**



**SCTKMF002**



**SCTKMF003**



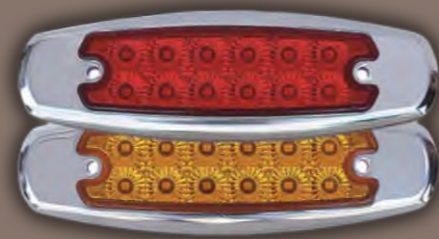
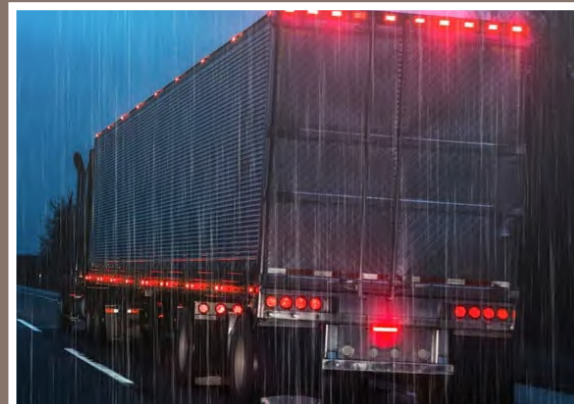
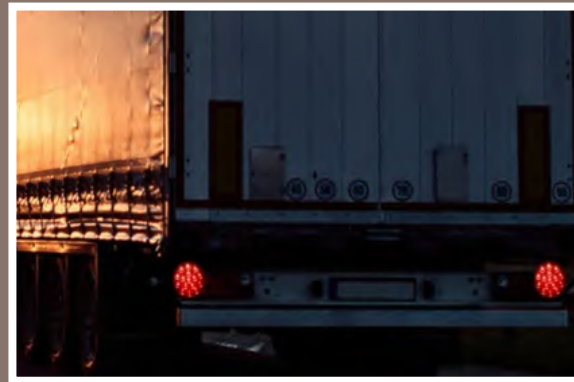
**SCTKMF004**



**SCTKMF005**



# 10. Truck Light



## Round sealed LED lights



SCTKLR001



SCTKLR002



SCTKLR003



SCTKLR004



SCTKLR005



SCTKLR006



SCTKLR007



SCTKLR008

ITEM NO	DIODES	SIZE	VOLTAGE	AVAILABLE COLOR
SCTKLR001	24	4"	12v/24v, 12-24v	Red, Amber, White
SCTKLR002	12	4"	12v/24v, 12-24v	Red, Amber, White
SCTKLR003	24	4"	12v/24v, 12-24v	Red, Amber, White
SCTKLR004	24	4"	12v/24v, 12-24v	Red, Amber, White
SCTKLR005	30	4"	12v/24v, 12-24v	Red, Amber, White
SCTKLR006	24	4"	12v/24v, 12-24v	Red, Amber, White
SCTKLR007	24	4"	12v/24v, 12-24v	Red, Amber, White
SCTKLR008	22	4"	12v/24v, 12-24v	Red, Amber, White

## Round sealed LED marker lights



SCTKMLR001



SCTKMLR002



SCTKMLR003

## Round sealed LED marker lights



SCTKMLR004



SCTKMLR005



SCTKMLR006



SCTKMLR007



SCTKMLR008

## Oval sealed LED lights



SCTKLO001



SCTKLO002



SCTKLO003

## Surface mount LED marker lights



SCTKMLS001



SCTKMLS002



SCTKMLS003

## Combination LED tail lights



SCTKCTL001



SCTKCTL002

ITEM NO	DIODES	SIZE	VOLTAGE	AVAILABLE COLOR	ITEM NO	DIODES	VOLTAGE	BRACKET	AVAILABLE COLOR
SCTKMLR001	9	2.5"	12v/24v, 12-24v	Red, Amber, White	SCTKLO001	24	12v/24v, 12-24v		Red, Amber, White
SCTKMLR002	13	2.5"	12v/24v, 12-24v	Red, Amber, White	SCTKLO002	10	12v/24v, 12-24v		Red, Amber, White
SCTKMLR003	4	2.5"	12v/24v, 12-24v	Red, Amber, White	SCTKLO003	32	12v/24v, 12-24v		Red, Amber, White
SCTKMLR004	6/9	2"	12v/24v, 12-24v	Red, Amber, White	SCTKMLS001	4	12v/24v, 12-24v		Red, Amber, White
SCTKMLR005	13	2"	12v/24v, 12-24v	Red, Amber, White	SCTKMLS002	10	12v/24v, 12-24v		Red, Amber, White
SCTKMLR006	4	2"	12v/24v, 12-24v	Red, Amber, White	SCTKMLS003	12	12v/24v, 12-24v		Red, Amber, White
SCTKMLR007	4		12v/24v, 12-24v	Red, Amber, White	SCTKCTL001	48	12v/24v, 12-24v	Iron	Red, Amber, White
SCTKMLR008	9		12v/24v, 12-24v	Red, Amber, White	SCTKCTL002	72	12v/24v, 12-24v	Iron	Red, Amber, White

# 11. Labor Protection Appliance



## Safety Goggles



SCTKSG001



SCTKSG002



SCTKSG003



SCTKSG004



SCTKSG005



SCTKSG006



SCTKSG007



SCTKSG008



SCTKSG009

Safety Clothing



SCTKSG010



SCTKSG011



SCTKSG012



SCTKSC001



SCTKSC002



SCTKSC003



SCTKSG013



SCTKSG014



SCTKSG015



SCTKSC004



SCTKSC005



SCTKSC006



SCTKSG016



SCTKSG017



SCTKSC007



SCTKSC008



SCTKSC009



SCTKSC010