

CHARLOTTE™

TECHNICAL SPECIFICATIONS

DESIGNATED USE	UV ₂₅₄ autonomous disinfection of surfaces within hospitals, public facilities, factories, etc.
-----------------------	--

DIMENSIONS

LENGTH	700 mm	27.6 in
WIDTH	500 mm	19.7 in
HEIGHT	1787 mm	70.4 in
TRAVERSABLE GAP	15 mm	0.6 in
STEP TRAVERSAL	10 mm @ 250 mm/s	0.4 in @ 9.84 in/s
WEIGHT	152 kg	334 lb

PERFORMANCE

MAXIMUM SPEED	4.8 km/h	2.98 mph
DISINFECTION	270° disinfection coverage	
TURNING RADIUS	0 mm	
SWING RADIUS	343 mm	13.5 in
ROTATIONAL SPEED	180° /s	
BODY CLEARANCE	50 mm (850 mm minimum opening)	2 in (33.5 in minimum opening)
FLOOR FLATNESS [1]	F _F 25	

POWER

OPERATION TIME	At least 8 hours of continuous disinfection time	
BATTERY TYPE	(2) Li-ion, 25.2 Vdc, 75 Ah (Appliance) (1) Li-ion, 22-30 Vdc, 72 Ah (Robot)	
BATTERY CYCLE TIMES	> 4000 cycles (80% DOD)	
CHARGING TIME	2 ¾ hours, Full Charge	

EXTERNAL CHARGER

INPUT	120 V, 60 Hz	Two (2) dedicated 15 A circuits
OUTPUT	24 Vdc	Max 40 A

ENVIRONMENT

AMBIENT TEMPERATURE	+5 - 40° C	+41 - 104° F
HUMIDITY	5 - 95%	

COMMUNICATION

CONTROL	Website & Mobile App	Wireless: 2.4 GHz and 5 GHz
----------------	----------------------	-----------------------------

SENSORS & SAFETY CONTROLS

3D 360°CAMERAS		2 units to monitor 360°
P.I.R.	Passive Infrared Sensors	4 units to monitor 360°
LIDAR	Light Detection and Ranging	2 units facing forward
SLAM	Simultaneous Localization and Mapping	1 unit on robot facing forward
SONAR	Sound Navigation Ranging	2 units on robot facing backward
LOW FRONT LASER	Obstacle Sensor for low-profile objects	1 unit on robot facing forward
EMERGENCY STOP	Emergency Stop Push Button	1 unit on rear of appliance

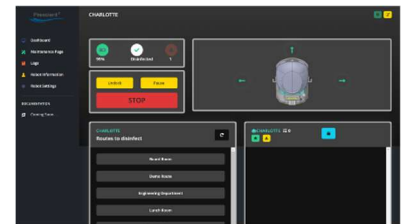
LAMPS

TYPE	UV ₂₅₄ Mercury Vapor - Teflon Coated	8 lamps (3 on sides, 2 facing forward)
-------------	---	--

CAUTION:

This device produces high levels of UV₂₅₄ that is harmful to the eyes and skin. No personnel are to be exposed to direct UV₂₅₄.

[1] - All surfaces should be tested prior to purchase



User Interface

