

VIOLET

TECHINICAL SPECIFICATIONS

DESIGNATED USE	UV ₂₅₄ disinfection of surfaces for industrial, manufacturing and distribution environments.	
-----------------------	---------------------------------------------------------------------------------------------------------	--

DIMENSIONS

LENGTH	740 mm	29.1 in
WIDTH	550 mm	21.7 in
HEIGHT	1831 mm (1933 mm, when charging)	72 in (76 in, when charging)
TRAVERABLE GAP	13 mm	0.5 in
STEP TRAVERSAL	6 mm @ slow speed	0.24 in @ slow speed
WEIGHT	210 kg	463 lb

PERFORMANCE

MAXIMUM SPEED	7.2 km/h	4.47 mph
DISINFECTION	270° disinfection coverage	
TURNING RADIUS	0 mm	
SWING RADIUS	530 mm	20.9 in
ROTATIONAL SPEED	220° /s	
BODY CLEARANCE	40 mm (850 mm minimum opening)	1.6 in (33.5 in minimum opening)
MAX GRADE [1]	1%	

POWER

BATTERY TYPE	(6) Li-ion, 13.2 Vdc, 35 Ah	4 units (Appliance) 2 units (Robot)
BATTERY CYCLE TIMES	9500 cycles	
FAST CHARGER TIME	24 minutes, 20% - 80%	0.4 hours, 20% - 80%
MANUAL CHARGER TIME	720 minutes	
OPERATION TIME	At least 6 hours of continuous disinfection time	

EXTERNAL CHARGER

FAST CHARGER INPUT	480 V or 600 V, 60 Hz	5 A or 4 A
FAST CHARGER OUTPUT	32.4 Vdc	100 A
MANUAL CHARGER INPUT	100-240 V, 50/60 Hz	4.0 A - 1.6 A
MANUAL CHARGER OUTPUT	24/36/48 Vdc	8 A Max

ENVIRONMENT

AMBIENT TEMPERATURE	0° C - 40° C	+32° F - 104° F
HUMIDITY	0 - 85%	

COMMUNICATION

CONTROL	Website & Mobile App	Wireless: 5 GHz
----------------	----------------------	-----------------

SENSORS & SAFETY CONTROLS

P.I.R.	Passive Infrared Sensors	4 units to monitor 360°
3D CAMERA	360° 3D Person Detection	2 units mounted on top, towards front
LIDAR	Light Detection and Ranging	1 unit facing forward
STEREO CAMERA	Stereo Vision for Calculating Depth	1 unit on robot facing forward
SONAR	Sound Navigation Ranging	1 unit on robot facing backward
EMERGENCY STOP	Emergency Stop Push Button	1 unit on rear of robot

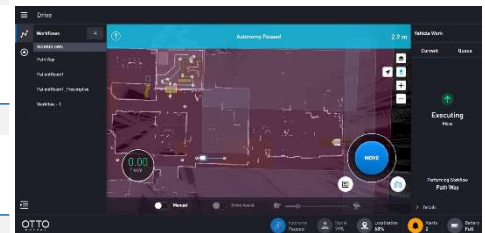
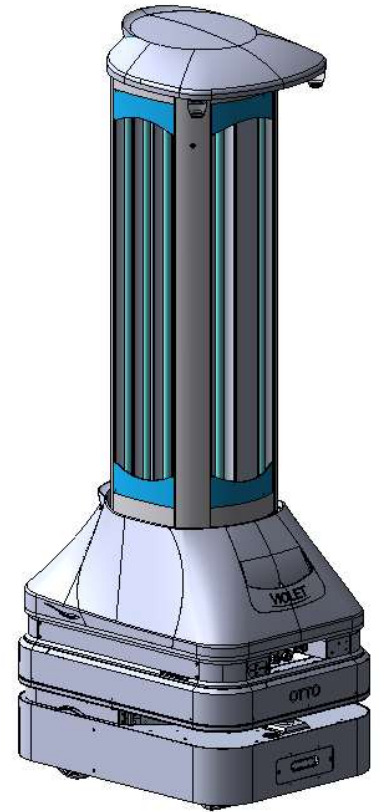
LAMPS

TYPE	UV ₂₅₄ Mercury Vapor - Teflon Coated	8 lamps (3 on sides, 2 facing forward)
-------------	-------------------------------------------------	----------------------------------------

CAUTION:

This device produces high levels of UV₂₅₄ that is harmful to the eyes and skin. No personnel are to be exposed to direct UV₂₅₄.

[1] - All surfaces should be tested prior to purchase



Robot Interface

