

**Cast Terminal Boxes**  
**&**  
**Electric Motor Cooling Fans**  
**Catalog and Price List**

**TERMINAL BOXES**



**Cast Aluminum Terminal Boxes**

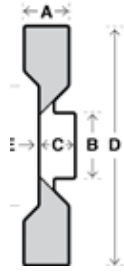
| Frame Size    | Part No. | A      | B      | C     | D      | E     | F     | G     | Conduit Opening | Cubic Inches | List Price |
|---------------|----------|--------|--------|-------|--------|-------|-------|-------|-----------------|--------------|------------|
| 184T - 286T   | TBA1     | 6      | 6 7/8  | 4     | 5 1/8  | 1 3/4 | 2 1/4 | 3 3/8 | 1" NPT          | 81           | \$112.27   |
| 286T - 365T   | TBA2     | 9 3/4  | 8 1/4  | 5 5/8 | 6 1/4  | 2 1/4 | 2 3/4 | 5     | 2" NPT          | 242          | \$231.10   |
| 365T - 445T   | TBA3     | 12 1/4 | 11 1/4 | 7 3/4 | 9      | 2 3/4 | 3 1/4 | 8     | 2 1/2" NPT      | 657          | \$359.78   |
| 445T & larger | TBA4     | 14 3/4 | 13 1/4 | 8 1/2 | 10 5/8 | 3 1/2 | 4     | 10    | 3" NPT          | 995          | \$584.09   |

**Cast Iron Terminal Boxes**

| Frame Size    | Part No. | A      | B      | C     | D      | E     | F     | G     | Conduit Opening | Cubic Inches | List Price |
|---------------|----------|--------|--------|-------|--------|-------|-------|-------|-----------------|--------------|------------|
| 184T - 286T   | TBI1     | 6      | 6 7/8  | 4     | 5 1/8  | 1 3/4 | 2 1/4 | 3 3/8 | 1" NPT          | 81           | \$236.05   |
| 286T - 365T   | TBI2     | 9 3/4  | 8 1/4  | 5 5/8 | 6 1/4  | 2 1/4 | 2 3/4 | 5     | 2" NPT          | 242          | \$345.27   |
| 365T - 445T   | TBI3     | 12 1/4 | 11 1/4 | 7 3/4 | 9      | 2 3/4 | 3 1/4 | 8     | 2 1/2" NPT      | 657          | \$433.62   |
| 445T & larger | TBI4     | 14 3/4 | 13 1/4 | 8 1/2 | 10 5/8 | 3 1/2 | 4     | 10    | 3" NPT          | 995          | \$607.81   |

## BLANK BORE FANS

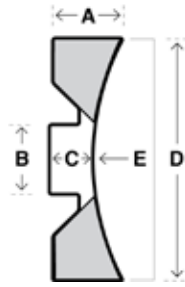
Style 1



| Part No. | Overall Diameter (D) | No. of Blades | Blade Width (A) | Hub Diameter (B) | Hub Thickness (C) | Hub Recess (E) | List Price |
|----------|----------------------|---------------|-----------------|------------------|-------------------|----------------|------------|
| 1-52     | 5 1/4                | 12            | 13/16           | 2                | 5/8               | 1/4            | \$30.00    |
| 1-55     | 5 5/8                | 12            | 1               | 2                | 5/8               | 1/4            | \$30.00    |
| 1-6      | 6                    | 12            | 1               | 2                | 5/8               | 1/4            | \$32.50    |
| 1-63     | 6 3/8                | 12            | 1               | 2                | 5/8               | 1/4            | \$32.50    |
| 1-66     | 6 3/4                | 12            | 1               | 2                | 1 1/16            | 1/4            | \$34.50    |
| 1-67     | 6 7/8                | 12            | 1 1/4           | 2 1/2            | 3/4               | 1/2            | \$34.50    |
| 1-7      | 7                    | 12            | 1 3/16          | 2                | 5/8               | 1/4            | \$34.50    |
| 1-72     | 7 1/4                | 12            | 1 7/16          | 2 1/2            | 1 1/8             | 7/16           | \$41.50    |
| 1-74     | 7 1/2                | 12            | 1 1/8           | 2                | 1 1/16            | 1/4            | \$41.50    |
| 1-75     | 7 5/8                | 12            | 1 5/8           | 2 1/4            | 7/8               | 3/8            | \$41.50    |
| 1-8      | 8                    | 8             | 1 1/4           | 2 1/2            | 1                 | 3/8            | \$46.50    |
| 1-84     | 8 1/2                | 12            | 1 1/4           | 2 1/8            | 1 5/16            | 5/8            | \$46.50    |
| 1-86     | 8 3/4                | 12            | 1 1/12          | 2 1/2            | 1 3/8             | 3/16           | \$55.50    |
| 1-9      | 9                    | 12            | 1 1/2           | 2 3/4            | 1 1/8             | 3/8            | \$60.50    |
| 1-93     | 9 3/8                | 8             | 1 1/2           | 2 1/2            | 1 1/4             | 3/8            | \$74.50    |
| 1-94     | 9 1/2                | 12            | 1 3/8           | 3 1/4            | 1 1/8             | 7/16           | \$76.00    |
| 1-10     | 10                   | 12            | 1 1/2           | 3 1/2            | 1 3/8             | 7/16           | \$83.00    |
| 1-104    | 10 1/2               | 12            | 1 3/8           | 3 1/4            | 1 1/8             | 7/16           | \$93.00    |
| 1-11     | 11                   | 12            | 2 1/8           | 4                | 1 3/8             | 5/8            | \$121.00   |
| 1-113    | 11 3/8               | 12            | 1 3/4           | 3 1/8            | 1                 | 1/2            | \$121.00   |
| 1-116    | 11 3/4               | 12            | 1 3/4           | 3 3/4            | 1 1/4             | 1/2            | \$148.50   |
| 1-124    | 12 1/2               | 12            | 1 7/8           | 4                | 1 1/4             | 9/16           | \$159.00   |
| 1-125    | 12 5/8               | 12            | 2 1/2           | 4 1/2            | 1 3/8             | 1              | \$169.50   |
| 1-13     | 13                   | 12            | 2               | 4                | 1 3/8             | 1/2            | \$204.00   |
| 1-132    | 13 1/4               | 12            | 2               | 4                | 1 3/8             | 3/4            | \$204.00   |
| 1-14     | 14                   | 12            | 2 1/8           | 4                | 1 9/16            | 9/16           | \$221.00   |
| 1-147    | 14 7/8               | 12            | 2 1/2           | 4 5/8            | 1 5/8             | 15/16          | \$221.00   |
| 1-16     | 16                   | 12            | 2 1/2           | 5                | 1 3/4             | 1 3/16         | \$231.00   |
| 1-17     | 17                   | 12            | 2 1/2           | 5                | 1 3/4             | 1 1/4          | \$231.00   |
| 1-177    | 17 7/8               | 15            | 2 5/8           | 5                | 1 3/4             | 1 1/4          | \$240.00   |

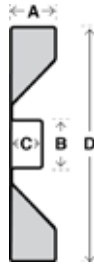
## BLANK BORE FANS

### Style 2



| Part No. | Overall Diameter (D) | No. of Blades | Blade Width (A) | Hub Diameter (B) | Hub Thickness (C) | Hub Recess (E) | List Price |
|----------|----------------------|---------------|-----------------|------------------|-------------------|----------------|------------|
| 2-94     | 9 1/2                | 9             | 2               | 3 1/8            | 1 5/16            | 1 1/8          | \$76.00    |
| 2-115    | 11 5/8               | 10            | 2 1/2           | 3 3/4            | 1 5/16            | 1 3/8          | \$131.50   |
| 2-145    | 14 5/8               | 12            | 2 1/2           | 4 1/4            | 1 5/8             | 1 7/16         | \$221.00   |
| 2-162    | 16 1/4               | 12            | 3               | 4 3/4            | 1 3/4             | 1 5/8          | \$255.50   |
| 2-18     | 18                   | 12            | 3               | 5                | 1 3/4             | 1 3/4          | \$290.00   |

### Style 3



| Part No. | Overall Diameter (D) | No. of Blades | Blade Width (A) | Hub Diameter (B) | Hub Thickness (C) | Hub Recess (E) | List Price |
|----------|----------------------|---------------|-----------------|------------------|-------------------|----------------|------------|
| 3-54     | 5 1/2                | 12            | 5/8             | 1 7/8            | 5/8               | 0              | \$40.00    |
| 3-72     | 7 1/4                | 12            | 1 1/2           | 2                | 1                 | 0              | \$41.50    |
| 3-8      | 8                    | 12            | 1               | 2 1/8            | 13/16             | 0              | \$41.50    |
| 3-82     | 8 1/4                | 12            | 1               | 2 1/8            | 1                 | 0              | \$41.50    |
| 3-83     | 8 3/8                | 12            | 1 1/2           | 2 1/8            | 13/16             | 0              | \$55.50    |
| 3-85     | 8 5/8                | 12            | 1 1/2           | 2 1/8            | 13/16             | 0              | \$55.50    |
| 3-86     | 8 3/4                | 12            | 1 1/2           | 2 1/8            | 13/16             | 0              | \$55.50    |
| 3-94     | 9 1/2                | 12            | 2               | 3 1/8            | 1 5/16            | 0              | \$73.00    |
| 3-11     | 11                   | 12            | 1 3/4           | 4                | 1 3/8             | 0              | \$121.00   |
| 3-115    | 11 5/8               | 12            | 2 1/2           | 3 3/4            | 1 5/16            | 0              | \$121.00   |
| 3-124    | 12 1/2               | 10            | 2 1/2           | 4 1/4            | 1 5/8             | 0              | \$209.50   |
| 3-145    | 14 5/8               | 12            | 2 1/2           | 4 1/4            | 1 5/8             | 0              | \$214.00   |
| 3-162    | 16 1/4               | 12            | 3               | 4 3/4            | 1 3/4             | 0              | \$244.00   |
| 3-174    | 17 1/2               | 12            | 3 1/4           | 5                | 2 1/3             | 0              | \$290.00   |
| 3-18     | 18                   | 18            | 3               | 5                | 1 3/4             | 0              | \$290.00   |
| 3-206    | 20 3/4               | 16            | 3 1/2           | 5 3/4            | 2 1/8             | 0              | \$384.00   |

## BLANK BORE FANS

### Fan Machining

| Fan Diameter | Bore, with Keyway Set Screws | Cut Down Overall Diameter | Mill Off Blade Width |
|--------------|------------------------------|---------------------------|----------------------|
| Under 14"    | \$40.00                      | \$40.00                   | \$40.00              |
| 14" and Over | \$50.00                      | \$50.00                   | \$50.00              |

We invite requests for any special fans you might require.  
Patterns can be made from your sample or drawings.

## REPLACEMENT MOTOR FANS

### Baldor

| Fan No. | Style | No. Blades | Overall Dia. | Bore Dia. | Frame Size | Keyway      | Set Screws  | List Price |
|---------|-------|------------|--------------|-----------|------------|-------------|-------------|------------|
| 1-104B2 | 1     | 12         | 10 1/2       | 1 1/2     | 250T       | 5/16 x 5/32 | 1 5/16 x 18 | \$150.00   |
| 1-116B1 | 1     | 12         | 11 3/4       | 1.690     | 280T       | 5/16 x 3/16 | 1 5/16 x 18 | \$205.00   |
| 1-132B1 | 1     | 12         | 13 1/4       | 2.003     | 320T       | 5/16 x 5/32 | 1 5/16 x 18 | \$260.00   |
| 1-6B2   | 1     | 12         | 6            | 5/8       | 56 & 140T  | None        | 1 1/4 x 20  | \$90.00    |
| 2-145B1 | 2     | 12         | 14 5/8       | 2 1/8     | 360T       | 5/16 x 5/32 | 1 5/16 x 18 | \$292.50   |
| 3-174B1 | 3     | 12         | 17 1/2       | 3.002     | 440T       | 3/8 x 3/16  | 1 5/16 x 18 | \$362.00   |
| 3-54B1  | 3     | 12         | 5 1/2        | 5/8       | 48         | None        | 2 1/4 x 20  | \$99.00    |
| 3-72B1  | 3     | 12         | 7 1/4        | .910      | 180T       | NONE        | 2 1/4 X 20  | \$99.00    |
| 3-82B1  | 3     | 12         | 8 1/4        | 1.174     | 210T       | 3/16 x 3/32 | 1 5/16 x 18 | \$99.00    |

### Century

| Fan No. | Style | No. Blades | Overall Dia. | Bore Dia. | Frame Size  | Keyway      | Set Screws  | List Price |
|---------|-------|------------|--------------|-----------|-------------|-------------|-------------|------------|
| 1-116B2 | 1     | 12         | 11 3/4       | 1 5/8     | 280T & 320T | 1/4 x 1/8   | 1 5/16 x 18 | \$205.00   |
| 1-14B2X | 1     | 12         | 13 7/8       | 1.969     | 360T        | 5/16 x 5/32 | 1 5/16 x 18 | \$414.00   |
| 1-6B3   | 1     | 12         | 6            | 5/8       | 56 & 140T   | None        | 1 1/4 x 20  | \$90.00    |
| 1-8B2   | 1     | 8          | 8            | 5/8       | 180T        | None        | 1 1/4 x 20  | \$104.00   |
| 1-9B1   | 1     | 12         | 9            | 1 1/8     | 210T        | 3/16 x 3/32 | 1 5/16 x 18 | \$118.00   |
| 3-11B1  | 3     | 12         | 11           | 1 1/8     | 250T        | 3/16 x 3/32 | 1 5/16 x 18 | \$178.00   |

### General Electric

| Fan No. | Style | No. Blades | Overall Dia. | Bore Dia. | Frame Size    | Keyway       | Set Screws  | List Price |
|---------|-------|------------|--------------|-----------|---------------|--------------|-------------|------------|
| 1-10B1  | 1     | 12         | 10           | 1 1/8     | 250U & 250T   | 3/16 x 3/32  | 1 5/16 x 18 | \$140.00   |
| 1-10B2  | 1     | 12         | 10           | 1 3/8     | 250U & 250T   | 3/16 x 3/32  | 1 5/16 x 18 | \$140.00   |
| 1-116B3 | 1     | 12         | 11 3/4       | 1 3/8     | 280U & 280T   | 3/16 x 3/32  | 1 5/16 x 18 | \$205.00   |
| 1-116B4 | 1     | 12         | 11 3/4       | 1 5/8     | 320US & 320T  | 3/16 x 3/32  | 1 5/16 x 18 | \$205.00   |
| 1-116B5 | 1     | 12         | 11 3/4       | 1 1/8     | 280U & 280T   | 3/16 X 3/32  | 1 5/16 x 18 | \$205.00   |
| 1-132B2 | 1     | 12         | 13 1/4       | 1 5/8     | 320US & 320T  | 3/16 x 3/32  | 1 5/16 x 18 | \$260.00   |
| 1-52B3  | 1     | 12         | 5 1/4        | .591      | 48            | None         | 1 1/4 x 20  | \$81.00    |
| 1-55B1  | 1     | 12         | 5 5/8        | 5/8       | 140T          | 1/8 x 1/16   | 1 1/4 x 20  | \$81.00    |
| 1-55B2  | 1     | 12         | 5 3/4        | 5/8       | 56            | None         | 1 1/4 x 20  | \$81.00    |
| 1-55B3  | 1     | 12         | 5 5/8        | .787      | 56            | None         | 2 1/4 x 20  | \$81.00    |
| 1-67B1  | 1     | 12         | 6 7/8        | .985      | 180           | 1/8 X 1/16   | 1 1/4 x 20  | \$92.50    |
| 1-6B5   | 1     | 12         | 6            | .985      | 180TS         | 1/8 x 1 1/16 | 1 1/4 x 20  | \$90.00    |
| 1-84B2  | 1     | 12         | 8 1/2        | .985      | 210           | 1/8 x 1/16   | 1 1/4 x 20  | \$104.00   |
| 1-9B2   | 1     | 12         | 9            | 1 1/8     | 250US & 250US | 3/16 x 3/32  | 1 5/16 x 18 | \$118.00   |

## General Electric, cont'd.

| Fan No. | Style | No. Blades | Overall Dia. | Bore Dia. | Frame Size   | Keyway     | Set Screws  | List Price |
|---------|-------|------------|--------------|-----------|--------------|------------|-------------|------------|
| 3-115B1 | 3     | 12         | 11 5/8       | 2.165     | 400US & 400T | 1/4 x 3/16 | 1 5/16 x 18 | \$178.00   |
| 3-124B1 | 3     | 12         | 12 1/2       | 2 1/2     | 440US & 440T | 1/4 x 3/16 | 1 5/16 x 18 | \$266.00   |
| 3-145B1 | 3     | 12         | 14 5/8       | 2.165     | 360U & 360T  | 1/4 x 3/16 | 1 5/16 x 18 | \$285.00   |
| 3-162B1 | 3     | 12         | 16 1/4       | 2.165     | 400U & 400T  | 1/4 x 3/16 | 1 5/16 x 18 | \$315.00   |
| 3-18B1  | 3     | 18         | 18           | 2 1/2     | 400U & 400T  | 1/4 x 3/16 | 1 5/16 x 18 | \$362.00   |
| 3-206B1 | 3     | 16         | 20 3/4       | 2 1/4     | 6323 & 6324  | 3/4 x 1/8  | 1 5/16 x 18 | \$455.00   |
| 3-72B1  | 3     | 12         | 7 1/4        | .985      | 180T         | 1/8 x 1/16 | 1 1/4 x 20  | \$99.00    |
| 3-72B2  | 3     | 12         | 7 1/4        | 1 3/16    | 180T & 210TS | 1/8 x 1/16 | 1 5/16 x 18 | \$99.00    |
| 3-94B1  | 3     | 12         | 9 1/2        | 2.165     | 360TS        | 1/4 x 3/16 | 1 5/16 x 18 | \$130.00   |

## Leeson

| Fan No.  | Style | No. Blades | Overall Dia. | Bore Dia. | Frame Size | Keyway     | Set Screws  | List Price |
|----------|-------|------------|--------------|-----------|------------|------------|-------------|------------|
| 1-10B4X  | 1     | 12         | 9 3/4        | 7/8       | 210T       | None       | 1 1/4 x 20  | \$185.00   |
| 1-11B3   | 1     | 12         | 11           | 1.656     | 280T       | None       | 2 5/16 x 18 | \$178.00   |
| 1-125B4  | 1     | 12         | 12 5/8       | 1.890     | 320T       | None       | 2 5/16 x 18 | \$226.50   |
| 1-125B5  | 1     | 12         | 12 5/8       | 2.165     | 360T       | None       | 2 5/16 x 18 | \$226.50   |
| 1-147B8X | 1     | 12         | 14 7/8       | 2.363     | 400T       | 5/32 x 1/8 | 1 5/16 x 18 | \$414.00   |
| 1-52B4   | 1     | 12         | 5 1/4        | 5/8       | 56 & 140T  | None       | 1 1/4 x 20  | \$81.00    |
| 1-8B6X   | 1     | 8          | 8            | 5/8       | 180T       | None       | 1 1/4 x 20  | \$146.00   |
| 1-93B5   | 1     | 8          | 9 3/8        | 1.656     | 250T       | None       | 2 5/16 x 18 | \$131.50   |

## Louis Allis

| Fan No. | Style | No. Blades | Overall Dia. | Bore Dia. | Frame Size | Keyway      | Set Screws  | List Price |
|---------|-------|------------|--------------|-----------|------------|-------------|-------------|------------|
| 1-125B2 | 1     | 12         | 12 5/8       | 1 15/16   | 320T       | 1/4 x 1/8   | 1 5/16 x 18 | \$226.50   |
| 1-6B7   | 1     | 12         | 6            | .668      | 140T       | 1/8 x 1/16  | 1 1/4 x 20  | \$90.00    |
| 1-6B8   | 1     | 12         | 6            | 5/8       | 140T       | 1/8 x 1/16  | 1 1/4 x 20  | \$90.00    |
| 1-72B1  | 1     | 12         | 7 1/4        | 7/8       | 180T       | 3/16 x 3/32 | 1 1/4 x 20  | \$99.00    |
| 1-74B1  | 1     | 12         | 7 1/4        | 3/4       | 180T       | 1/4 x 1/8   | 1 1/4 x 20  | \$99.00    |
| 2-115B1 | 2     | 10         | 11 5/8       | 1 3/4     | 280T       | 1/4 x 1/8   | 1 5/16 x 18 | \$203.00   |
| 2-162B2 | 2     | 12         | 16 1/4       | 2 5/8     | 400T       | 1/2 x 1/4   | 1 5/16 x 18 | \$327.00   |
| 2-18B1  | 2     | 12         | 18           | 3         | 440T       | 1/2 x 1/4   | 1 5/16 x 18 | \$361.50   |
| 2-94B1  | 2     | 9          | 9 1/2        | 2         | 250T       | 1/4 x 1/8   | 1 5/16 x 18 | \$133.00   |

## Marathon

| Fan No.  | Style | No. Blades | Overall Dia. | Bore Dia. | Frame Size | Keyway      | Set Screws  | List Price |
|----------|-------|------------|--------------|-----------|------------|-------------|-------------|------------|
| 1-116B6  | 1     | 12         | 11 3/4       | 1.400     | 280T       | None        | 2 5/16 x 18 | \$205.00   |
| 1-147B2X | 1     | 12         | 14 7/8       | 2 3/16    | 360T       | 1/2 x 1/4   | 1 5/16 x 18 | \$414.00   |
| 1-14B4   | 1     | 12         | 14           | 1.654     | 320T       | 3/16 x 3/32 | 1 5/16 x 18 | \$292.00   |
| 1-6B6    | 1     | 12         | 6            | 5/8       | 140T       | None        | 1 1/4 x 20  | \$90.00    |
| 1-86B4   | 1     | 12         | 8 3/4        | 15/16     | 210T       | None        | 2 1/4 x 20  | \$111.00   |
| 1-8B4    | 1     | 8          | 8            | 5/8       | 180T       | None        | 1 1/4 x 20  | \$104.00   |
| 1-93B2   | 1     | 8          | 9 3/8        | 1 1/4     | 250T       | None        | 2 5/16 x 18 | \$131.50   |

## Reliance

| Fan No. | Style | No. Blades | Overall Dia. | Bore Dia. | Frame Size  | Keyway      | Set Screws  | List Price |
|---------|-------|------------|--------------|-----------|-------------|-------------|-------------|------------|
| 1-104B4 | 1     | 12         | 10 1/2       | 1 1/8     | 250T        | 1/4 x 3/16  | 1 5/16 x 18 | \$150.00   |
| 1-104B5 | 1     | 12         | 10 1/2       | 1 1/4     | 250T        | 1/4 x 3/16  | 1 5/16 x 18 | \$150.00   |
| 1-104B6 | 1     | 12         | 10 1/2       | 1 7/8     | 250T        | 1/4 x 3/16  | 1 5/16 x 18 | \$150.00   |
| 1-104B7 | 1     | 12         | 10 1/2       | 7/8       | 250T        | 5/16 x 3/16 | 1 1/4 x 20  | \$150.00   |
| 1-104B8 | 1     | 12         | 10 1/2       | 1 3/8     | 250T        | 5/16 x 3/16 | 1 5/16 x 18 | \$150.00   |
| 1-104B9 | 1     | 12         | 10 1/2       | 1 5/8     | 250T        | 3/8 x 3/16  | 1 5/16 x 18 | \$150.00   |
| 1-116B7 | 1     | 12         | 11 3/4       | 1 1/8     | 280T        | 1/4 x 3/16  | 1 5/16 x 18 | \$205.00   |
| 1-116B8 | 1     | 12         | 11 3/4       | 1 3/4     | 280T        | 1/4 x 3/16  | 1 5/16 x 18 | \$205.00   |
| 1-132B4 | 1     | 12         | 13 1/4       | 1 1/4     | 320T        | 1/4 x 3/16  | 1 5/16 x 18 | \$260.00   |
| 1-132B5 | 1     | 12         | 13 1/4       | 2         | 320T        | 1/4 x 3/16  | 1 5/16 x 18 | \$260.00   |
| 1-147B4 | 1     | 12         | 14 7/8       | 1 7/8     | 360T        | 1/4 x 3/16  | 1 5/16 x 18 | \$292.00   |
| 1-17B2  | 1     | 12         | 17           | 2 7/16    | 400T & 440T | 1/2 x 1/4   | 1 5/16 x 18 | \$302.00   |
| 1-63B1  | 1     | 12         | 6/38         | 5/8       | 140T        | None        | 1 1/4 x 20  | \$90.00    |
| 1-74B3  | 1     | 12         | 7 1/2        | 5/8       | 180T        | None        | 1 1/4 x 20  | \$99.00    |
| 1-74B4  | 1     | 12         | 7 1/2        | 7/8       | 180T        | None        | 2 1/4 x 20  | \$99.00    |
| 1-74B5  | 1     | 12         | 7 1/2        | 15/16     | 180T        | 1/4 x 3/16  | 1 1/4 x 20  | \$99.00    |
| 1-74B6  | 1     | 12         | 7 1/2        | 1 5/32    | 180T        | 5/16 x 3/16 | 1 5/16 x 18 | \$99.00    |
| 1-9B3   | 1     | 12         | 9            | 5/8       | 210T        | 1/4 x 3/16  | 1 1/4 x 20  | \$118.00   |
| 1-9B4   | 1     | 12         | 9            | 1 1/8     | 210T        | 1/4 x 3/16  | 1 5/16 x 18 | \$118.00   |
| 1-9B5   | 1     | 12         | 9            | 1 5/32    | 210T        | 1/4 x 3/16  | 1 5/16 x 18 | \$118.00   |
| 1-9B6   | 1     | 12         | 9            | 7/8       | 210T        | 5/16 x 3/16 | 1 1/4 x 20  | \$118.00   |
| 1-9B7   | 1     | 12         | 9            | 1 3/8     | 210T        | 5/16 x 3/16 | 1 5/16 x 18 | \$118.00   |
| 1-9B8   | 1     | 12         | 9            | 1 5/8     | 210T        | 3/8 x 3/16  | 1 5/16 x 18 | \$118.00   |
| 3-206B2 | 3     | 16         | 20 3/4       | 2 7/16    | 440T        | 1/2 x 1/4   | 1 5/16 x 18 | \$455.00   |

## Siemens-Allis

| Fan No.  | Style | No. Blades | Overall Dia. | Bore Dia. | Frame Size    | Keyway      | Set Screws  | List Price |
|----------|-------|------------|--------------|-----------|---------------|-------------|-------------|------------|
| 1-104B1  | 1     | 12         | 10 1/2       | 1.406     | 250T          | 3/16 x 3/32 | 1 5/16 x 18 | \$150.00   |
| 1-124B1  | 1     | 12         | 12 1/2       | 1 3/8     | 280T          | 3/16 x 3/32 | 1 5/16 x 18 | \$217.00   |
| 1-147B1  | 1     | 12         | 14 7/8       | 2 1/4     | 360T          | None        | 2 5/16 x 18 | \$292.00   |
| 1-14B1   | 1     | 12         | 14           | 1 3/8     | 320T          | None        | 2 5/16 x 18 | \$292.00   |
| 1-16B1   | 1     | 12         | 16           | 2.132     | 400T          | None        | 2 5/16 x 18 | \$302.00   |
| 1-177B1X | 1     | 15         | 17 7/8       | 2 1/8     | 440T 1200 rpm | None        | 2 5/16 x 18 | \$432.00   |
| 1-6B1    | 1     | 12         | 6            | 5/8       | 140T & 180TS  | 1/8 x 1/16  | 1 1/4 x 20  | \$90.00    |
| 1-86B1   | 1     | 12         | 8 3/4        | 5/8       | 210T          | None        | 1 1/4 x 20  | \$111.00   |
| 1-86B2   | 1     | 12         | 8 3/4        | 1 3/8     | 250TS & 280T  | 3/16 x 3/32 | 1 5/16 x 18 | \$111.00   |
| 1-86B3   | 1     | 12         | 8 3/4        | 1 3/16    | 210T          | 1/8 x 1/16  | 1 5/16 x 18 | \$111.00   |
| 1-8B1    | 1     | 8          | 8            | 5/8       | 180T & 210TS  | 1/8 x 1/16  | 1 1/4 x 20  | \$104.00   |
| 1-93B1   | 1     | 8          | 9 3/8        | 1.160     | 210T          | None        | 2 5/16 x 18 | \$131.50   |
| 2-162B1  | 2     | 12         | 16 1/4       | 2 1/8     | 440T          | None        | 2 5/16 x 18 | \$327.00   |

## Toshiba

| Fan No.  | Style | No. Blades | Overall Dia. | Bore Dia. | Frame Size   | Keyway       | Set Screws  | List Price |
|----------|-------|------------|--------------|-----------|--------------|--------------|-------------|------------|
| 1-11B4   | 1     | 12         | 11           | 1.969     | 280TS        | 10 x 4mm     | 1 5/16 x 18 | \$178.00   |
| 1-11B5   | 1     | 12         | 11           | 2.165     | 320TS & 360T | 7 x 3 1/2mm  | 1 5/16 x 18 | \$178.00   |
| 1-125B3  | 1     | 12         | 12 5/8       | 2.362     | 400TS        | 7 x 3 1/2mm  | 1 5/16 x 18 | \$226.50   |
| 1-132B6  | 1     | 12         | 13 1/4       | 2.362     | 320T         | 7 x 3 1/2mm  | 1 5/16 x 18 | \$260.00   |
| 1-13B3   | 1     | 12         | 13           | 1.969     | 280T         | 7 x 3 1/2mm  | 1 5/16 x 18 | \$260.00   |
| 1-147B6X | 1     | 12         | 14 7/8       | 2.362     | 360T         | 7 x 3 1/2mm  | 1 5/16 x 18 | \$414.00   |
| 1-147B7X | 1     | 12         | 14 7/8       | 2.559     | 400T         | 7 x 3 1/2mm  | 1 5/16 x 18 | \$414.00   |
| 1-63B2   | 1     | 12         | 6 3/8        | .866      | 140T         | 7 x 4mm      | 1 1/4 x 20  | \$90.00    |
| 1-8B7    | 1     | 8          | 8            | 1.102     | 180T         | None         | 2 5/16 x 18 | \$104.00   |
| 1-94B2   | 1     | 12         | 9 1/2        | 1.417     | 210T         | None         | 2 5/16 x 18 | \$133.50   |
| 1-9B11   | 1     | 12         | 9            | 1.969     | 280TS        | 7 x 3 1/2 mm | 1 5/16 x 18 | \$118.00   |
| 1-9B12   | 1     | 12         | 9            | 1.417     | 210TS & 250T | None         | 2 5/16 x 18 | \$118.00   |

## US

| Fan No.  | Style | No. Blades | Overall Dia. | Bore Dia. | Frame Size   | Keyway       | Set Screws  | List Price |
|----------|-------|------------|--------------|-----------|--------------|--------------|-------------|------------|
| 1-104B10 | 1     | 12         | 10 1/2       | 1 5/8     | 280T         | None         | 2 5/16 x 18 | \$150.00   |
| 1-13B2   | 1     | 12         | 13           | 1 7/8     | 320T         | 1/2 x 1/4    | 1 5/16 x 18 | \$260.00   |
| 1-14B5   | 1     | 12         | 14           | 2 1/8     | 360T         | 3/8 x 3/16   | 1 5/16 x 18 | \$292.00   |
| 1-52B2   | 1     | 12         | 5 1/4        | 9/16      | 56           | None         | 1 1/4 x 20  | \$81.00    |
| 1-55B4   | 1     | 12         | 5 5/8        | 7/8       | 180U         | 3/16 x 3/32  | 1 1/4 x 20  | \$81.00    |
| 1-67B2   | 1     | 12         | 6 7/8        | 1 1/8     | 180TS        | None         | 2 5/16 x 18 | \$92.50    |
| 1-67B3   | 1     | 12         | 6 7/8        | 7/8       | 210TS        | None         | 1 1/4 x 20  | \$92.50    |
| 1-84B3   | 1     | 12         | 8 1/2        | 1 1/4     | 210T         | None         | 2 5/16 x 18 | \$104.00   |
| 1-8B5    | 1     | 8          | 8            | 7/8       | 180T & 210TS | None         | 1 1/4 x 20  | \$104.00   |
| 2-162B3  | 2     | 12         | 16 1/4       | 2 3/8     | 400T         | 3/8 x 3/16   | 1 5/16 x 18 | \$327.00   |
| 3-54B2   | 3     | 12         | 5 1/2        | .660      | 140T         | 1/8 x 1 1/16 | 1 1/4 x 20  | \$99.00    |

## Westinghouse

| Fan No.  | Style | No. Blades | Overall Dia. | Bore Dia. | Frame Size    | Keyway     | Set Screws  | List Price |
|----------|-------|------------|--------------|-----------|---------------|------------|-------------|------------|
| 1-10B3   | 1     | 12         | 10           | 1.378     | 250T          | 1/8 x 3/32 | 1 5/16 x 18 | \$140.00   |
| 1-10B5X  | 1     | 12         | 9            | 2.263     | 400TS         | None       | 2 5/16 x 18 | \$185.00   |
| 1-11B2   | 1     | 12         | 11           | 1.772     | 280T          | 5/32 x 1/8 | 1 5/16 x 18 | \$178.00   |
| 1-125B1  | 1     | 12         | 12 5/8       | 2.166     | 320T          | 5/32 x 1/8 | 1 5/16 x 18 | \$226.50   |
| 1-147B5X | 1     | 12         | 14           | 2.166     | 360T          | 5/32 x 1/8 | 1 5/16 x 18 | \$414.00   |
| 1-17B3   | 1     | 12         | 17           | 2.363     | 400T 1200 rpm | 5/32 x 1/8 | 1 5/16 x 18 | \$302.00   |
| 1-17B4   | 1     | 12         | 17           | 2 1/2     | 440T          | None       | 1 5/16 x 18 | \$302.00   |
| 1-55B5   | 1     | 12         | 5 5/8        | .985      | 140T          | 1/8 x 3/32 | 1 1/4 x 20  | \$81.00    |
| 1-6B9    | 1     | 12         | 6            | .985      | 180TS         | 1/8 x 3/32 | 1 1/4 x 20  | \$90.00    |
| 1-72B1X  | 0     | 12         | 6 3/4        | 1.181     | 210TS         | 1/8 x 3/32 | 1 5/16 x 18 | \$140.00   |
| 1-72B2   | 1     | 12         | 7 1/4        | .985      | 180T          | 1/8 x 3/32 | 1 1/4 x 20  | \$99.00    |
| 1-84B1   | 1     | 12         | 8 1/2        | 1.378     | 250TS         | 1/8 x 3/32 | 1 5/16 x 18 | \$104.00   |
| 1-84B4   | 1     | 12         | 8 1/2        | 1.772     | 280TS         | 1/8 x 3/32 | 1 5/16 x 18 | \$104.00   |
| 1-9B10   | 1     | 12         | 9            | 1.182     | 210T          | 1/8 x 3/32 | 1 5/16 x 18 | \$118.00   |
| 1-9B9    | 1     | 12         | 9            | 2.166     | 320TS         | 1/8 x 3/32 | 1 5/16 x 18 | \$118.00   |