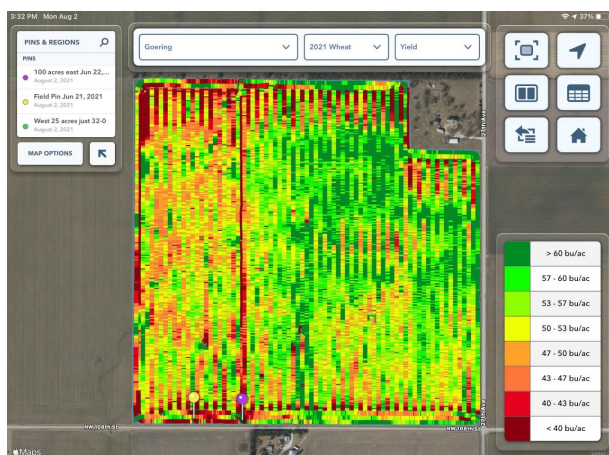


# 2021 HyprGrow Wheat

## Trial Overview

During the spring of 2021, Elevate Ag and Ag360 set up multiple trial sites around Moundridge, Newton and Hesston, KS. In this particular trial, there were three different fertility plans within the same field.

1. Normal Fertility
2. Normal Fertility + Competitor Product
3. Normal Fertility + one HyprGrow Application @ Topdress



## Trial Legend

- Yellow Pin to West Edge = Normal Fertility
- Between Yellow and Purple Pin = Normal Fertility + Competitor Product
- Purple Pin to East Edge = Normal Fertility + HyprGrow

## Results - ROI

Normal Fertility - Yellow Pin to West Edge: 45bu/acre @ 9.19% Protein

Norman Fertility + Competitor Product - Yellow Pin to Purple Pin: 46bu/acre @ 8.92% Protein

Normal Fertility + HyprGrow - Purple Pin to East edge: 51bu/acre @ 10.60% Protein

HyprGrow Cost - \$15/acre

Additional Revenue/Acre - 6 bu x \$6.50/bu = **\$39/acre**

**Additional Profit/Acre - \$24/acre or ROI of 60%**