

# Options

## Powered Swivel

The Stannah powered swivel turns the chair to face away from the stairs, for ease-of-use and safety. Available as a two-way swivel on the Starla 260, for swiveling at the top and bottom of the stairs. Stannah offers the best installation solution when there is a door at the top of the stairs.



## Optional Rail Colours

Customize your stairlift to suit your home's decor with our optional rail colours. In addition to the standard Pearl colour, the Model 260 curved rail can be finished in Nut Brown, Ochre, Beige, Black or Gray.

### Model 260 Optional Rail Colours



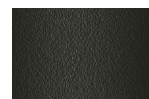
Nut Brown



Ochre



Beige



Black



Gray

## Seatbelt Options

Our lap-diagonal and five-point seatbelts provide extra restraint over the shoulders and between the legs.



## Rudder Control

The rudder control option is helpful for those who may have difficulty with dexterity, for example, due to severe arthritis or tremors.



## Additional Curved Rail Options

- Parking Kit— allows your Model 260 chair to be parked a short way up the rail, conveniently out of the way.
- Intermediate Stop—for mid-landing stops (such as on a split-level staircase).
- Heavy-Usage Kit—increases the number of journeys provided by the batteries.
- Rubber Mats—used where a support leg cannot be fastened to the floor.
- Reduced Footrest & Offset Footrest—for narrow or steep stairs.

# Stairlifts for Curved Stairs



Family Owned & Operated since 2014



**Comfort Mobility**  
Home Health Care

**519-988-1234**

2707 Temple Drive, Windsor (Off Central Ave North of EC Row)

**Sales, Service & Rentals**  
[www.comfortmobility.ca](http://www.comfortmobility.ca)

## Stannah Canada Inc.

**Head Office & Showroom:**  
25 Valleywood Drive, Unit #15  
Markham, ON L3R 5L9

Additional Showrooms throughout the US and Canada. Call for more information.

**1-888-647-8219**  
[stannah@stannah.ca](mailto:stannah@stannah.ca)  
[www.stannah.ca](http://www.stannah.ca)



**Stannah**

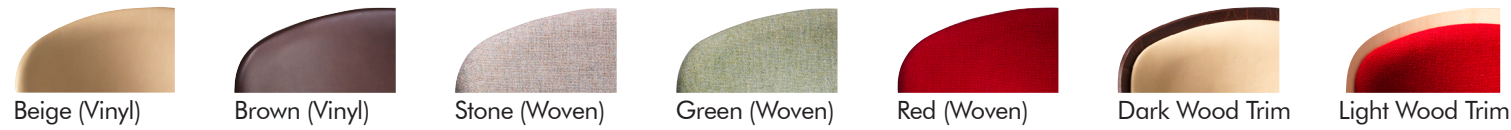
# Stairlifts for Stairs that Turn

## Starla 260

For a premium package, choose the 260 Starla for our most comfortable and customizable stairlift. The Starla has many upholstery colours to choose from, each available with wood trim. The Starla chair has a high, rounded back and a gently reclined seat, for added comfort. Complete with a powered footrest, and a custom engineered curved rail, the Starla 260 stairlift is an exceptional choice.



### Starla Upholstery and Wood Trim Options (Wood trim is available with any Starla upholstery choice)



## Siena 260

The Siena 260 offers many standard features including a powered footrest, extra-long folding armrests to help you get in and out of the chair, a gentle touch directional hand control and two remotes. Our wide seat in easy-clean vinyl upholstery has several colour choices. The custom rail makes the Siena 260 stairlift suitable for most curved stairs.



### Siena Upholstery Colours



## Sadler 260

The Stannah Sadler 260, an innovative stairlift, designed for narrow stairs or for those who find it difficult to sit or bend their knees. Our design places you in a perch position, without unduly stressing the knees. The saddle-style seat gently raises and lowers helping you in and out of the chair with ease. The immobilizer seatbelt ensures that your ride will be safe and secure.



## Standard Features You'll Love

Stannah's exceptional warranty and reliability will bring you peace of mind. Our thoughtfully designed key features make your Stannah stairlift safe and easy to use. Features below apply to all curved models unless otherwise specified.

### Easy-to-use Controls

The light-touch control allows you to operate the stairlift with any part of your hand.

### A Chair that Swivels

Turn to a safe position at the top or bottom of your stairs, with manual swivel levers, or optional one or two-way powered swivel.

### Armrest Safety

For your safety, the downside armrest must be lowered before riding.

### Safety Sensors

Stop the stairlift if it meets an obstruction.

### 300lb Weight Capacity

### Powered Footrest

Eliminates the need to bend over to unfold or fold the footrest.



### Siena Chair Width Options

Available in two width options depending upon your needs.

### Retractable Seatbelt

Easy to reach retractable seatbelt, requires only one hand to use.

### On/Off Switch

Conveniently placed, prevents the chair from moving unexpectedly.

### Battery Operated

Automatically recharging, long-life batteries (not shown) keep your stairlift working in the event of a power outage.

### Power-On Light (not shown)

### Two Remotes

Call and send your stairlift or operate the powered swivel.

### Keyed Lock (not shown)

Prevents unauthorized use.

## Stannah Curved Rail

The Stannah 260 curved rail is custom engineered to your stair measurements, with the rail neatly attached to your stair treads, not the wall. Many curved rail configurations are available to give you the best fit

for your stairs and needs, including a complete wrap around the stairs or wall so you can transfer and park your stairlift away from the stairs.

