

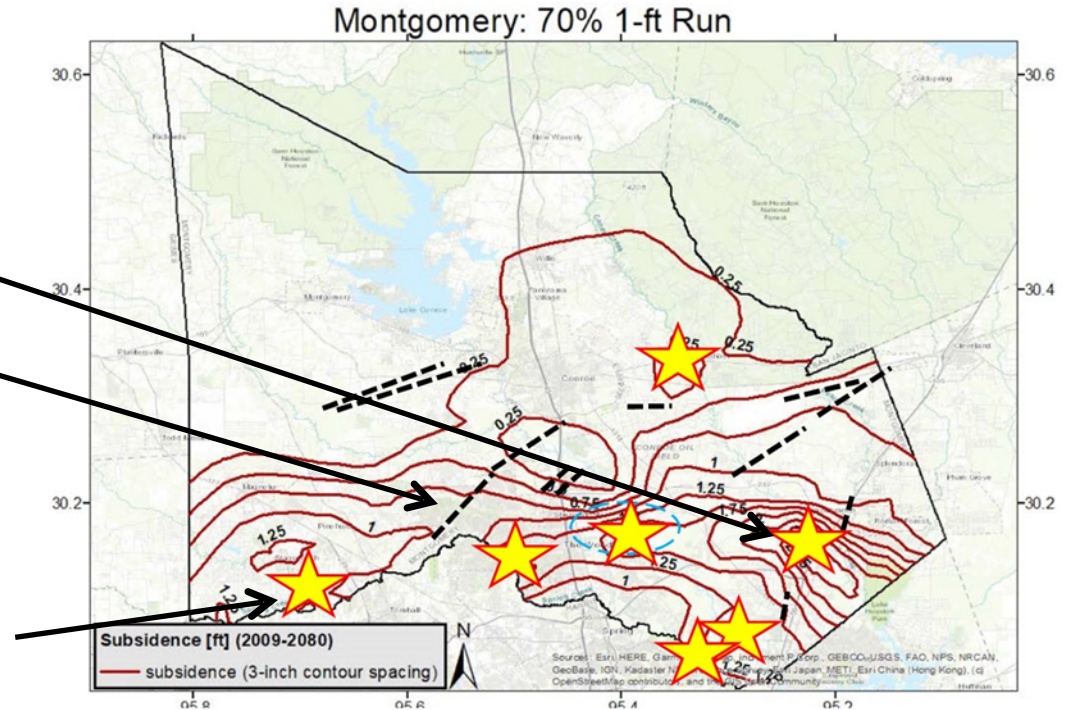
Subsidence and proposed groundwater rules



Support sustainable groundwater use that doesn't cause subsidence!

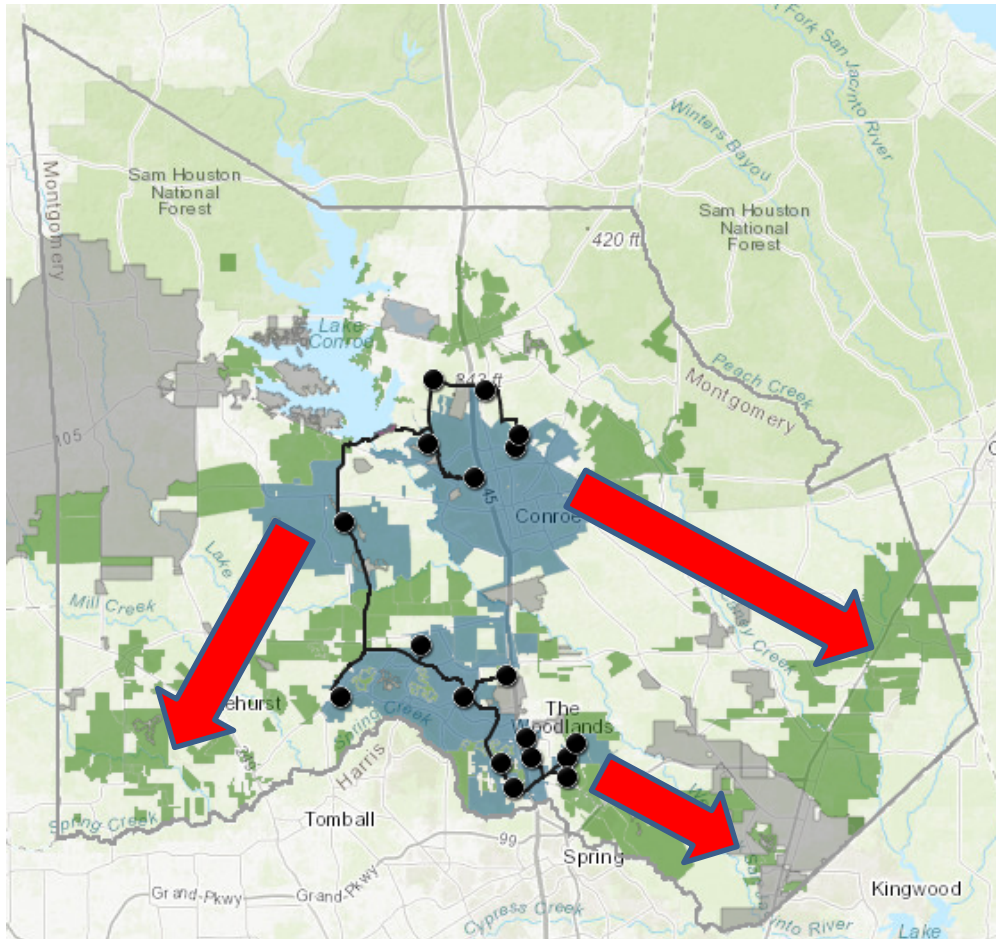
The problem

- We use more water than the groundwater aquifers can recharge
- Excessive GW use will cause
 - more subsidence (as much as 3 ft in SMC)
 - fault activation
- Excessive GW use has
 - WestMC68 .37"/yr
 - CentralMC69 .41"/yr
 - EastMC72 .43"/yr
- Subsidence is expected to be uneven, with upstream areas sinking more than downstream areas (reducing drainage capacity)



UPSTREAM area sinking
> DOWNSTREAM area
(flooding is likely)

The solution



- Expand use of surface water and reduce demand for groundwater
- Ample surface water is available, including distribution systems
- The surface water distribution strategy can be expanded to reduce or eliminate future sinking

What can you do?

- Let the Lone Star Groundwater Conservation District know what you think
- Comments MUST be provided by July 19
- Visit StopOurSinking.com for info