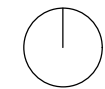
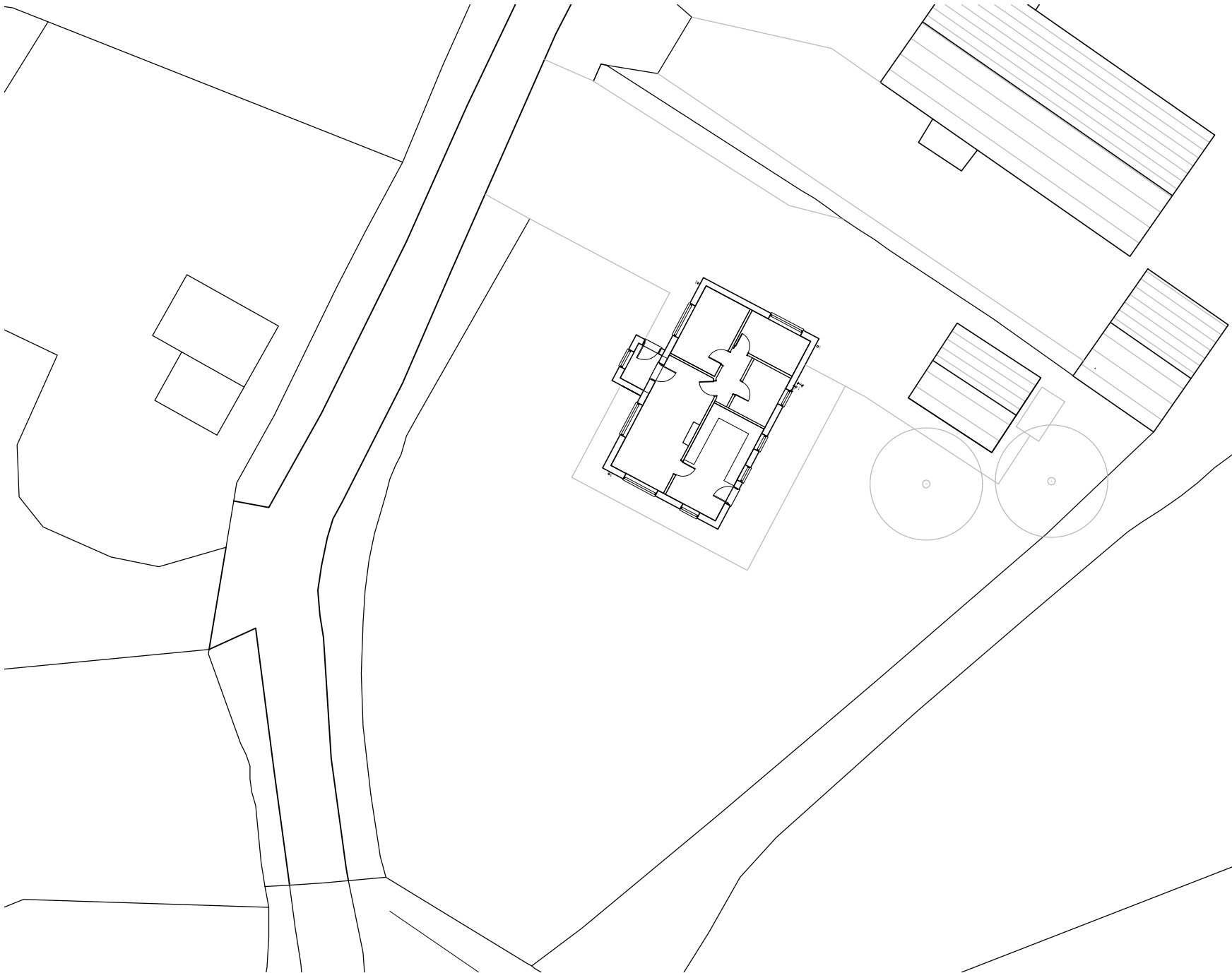


1. Internal dimensions are structural, to the face of the studs, blockwork or structural concrete walls.
2. Plot areas indicated are gross internal areas, room areas indicated are finished areas, not structural. Accuracy of areas shown on plans are subject to tolerances of site construction and detail design.
3. For site setting out and ground levels, refer to civil engineer's drawings.
4. DPC shown indicative only and to be min 150 above external ground level.
5. Window openings are structural openings. Window manufacture to allow tolerances



Job: Greenlands, Swineshead

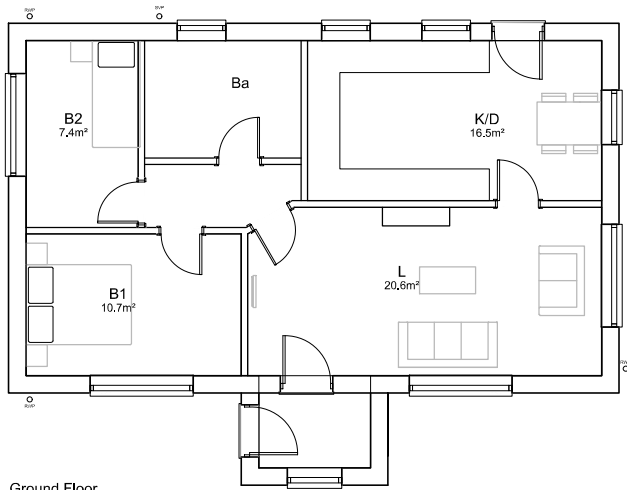
DWG: Existing Site Plan

Scale: 1:200 @ A3

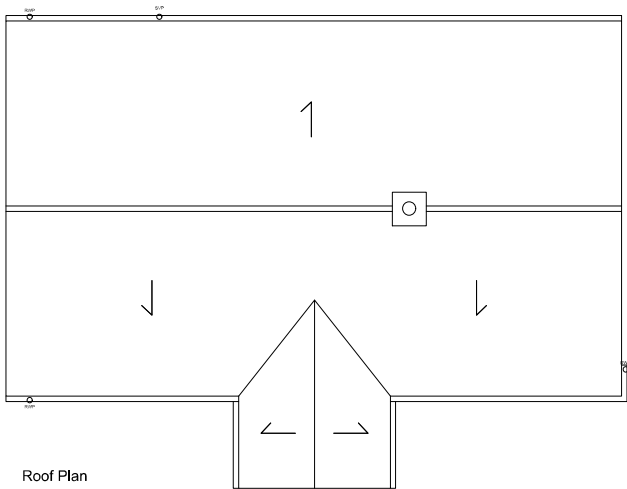
Date: Feb 20

DWG no: PL002 **Rev** -





Ground Floor
71.1m²
(765 SQ. FT.)



Roof Plan



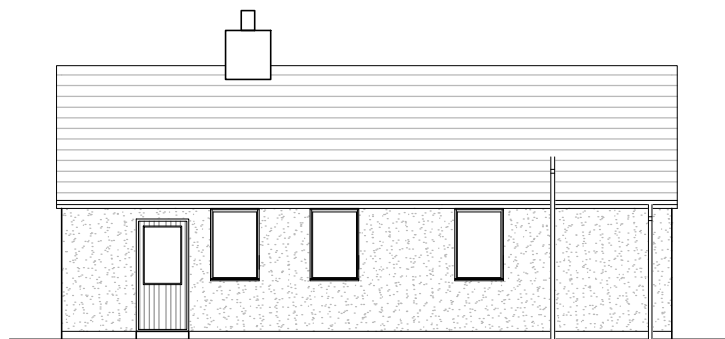
FRONT



RIGHT



LEFT



REAR

1. Internal dimensions are structural, to the face of the studs, blockwork or structural concrete walls.
2. Plot areas indicated are gross internal areas, room areas indicated are finished areas, not structural. Accuracy of areas shown on plans are subject to tolerances of site construction and detail design.
3. For site setting out and ground levels, refer to civil engineer's drawings.
4. DPC shown indicative only and to be min 150 above external ground level.
5. Window openings are structural openings. Window manufacture to allow tolerances.

Job: Greenlands, Swineshead

DWG: Existing Plans & Elevations

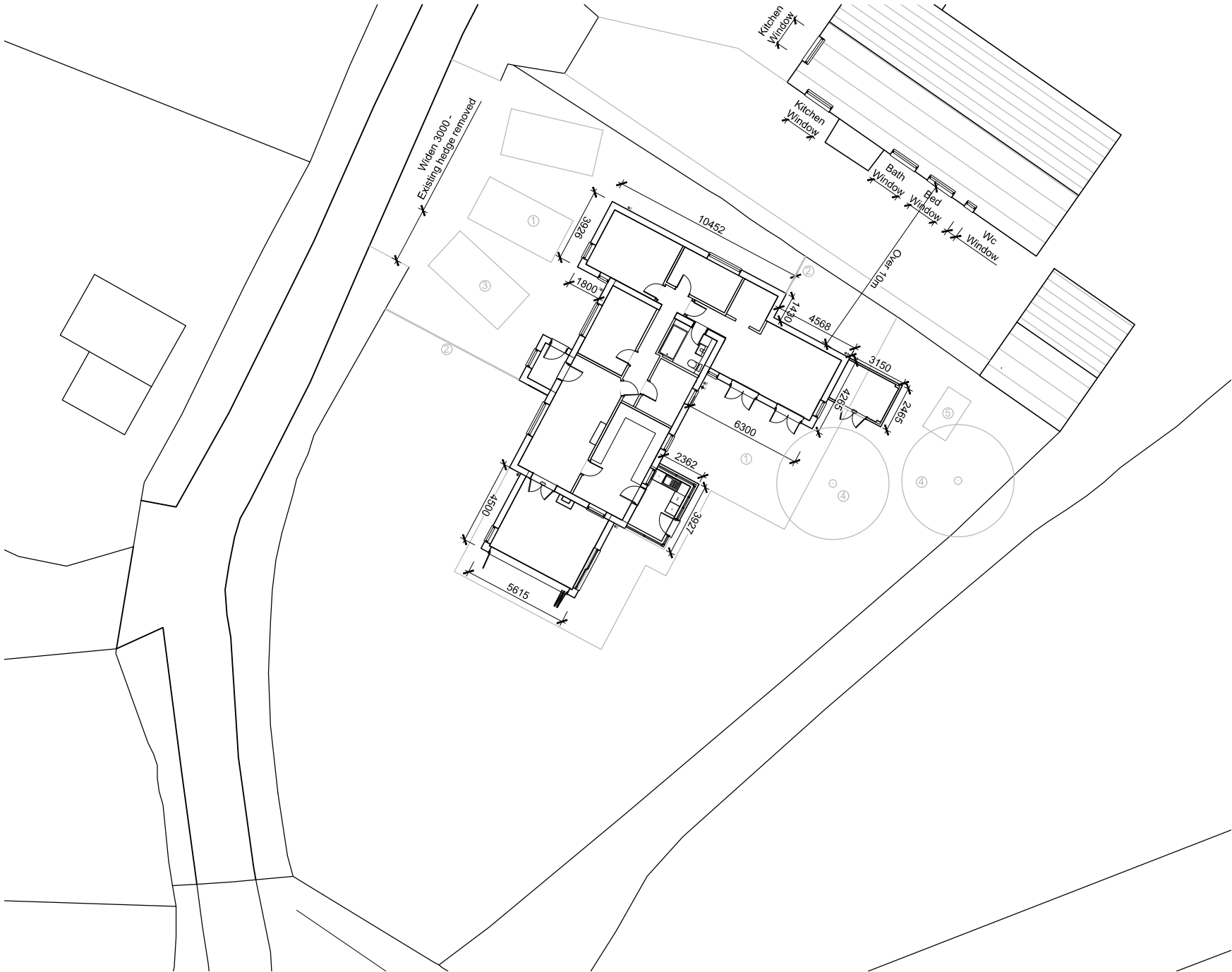
Scale: 1:100 @ A3

Date: Feb 20

DWG no: PL003 **Rev** -



1. Internal dimensions are structural, to the face of the studs, blockwork or structural concrete walls.
2. Plot areas indicated are gross internal areas, room areas indicated are finished areas, not structural. Accuracy of areas shown on plans are subject to tolerances of site construction and detail design.
3. For site setting out and ground levels, refer to civil engineer's drawings.
4. DPC shown indicative only and to be min 150 above external ground level.
5. Window openings are structural openings. Window manufacture to allow tolerances



MATERIAL KEY

- 1. Hardstanding
- 2. 1.8m Closed Boarded Fencing
- 3. 3no Parking Spaces
- 4. Existing Tree Retained
- 5. Greenhouse Retained



Job: Greenlands, Swineshead

DWG: Proposed Site Plan

Scale: 1:200 @ A3

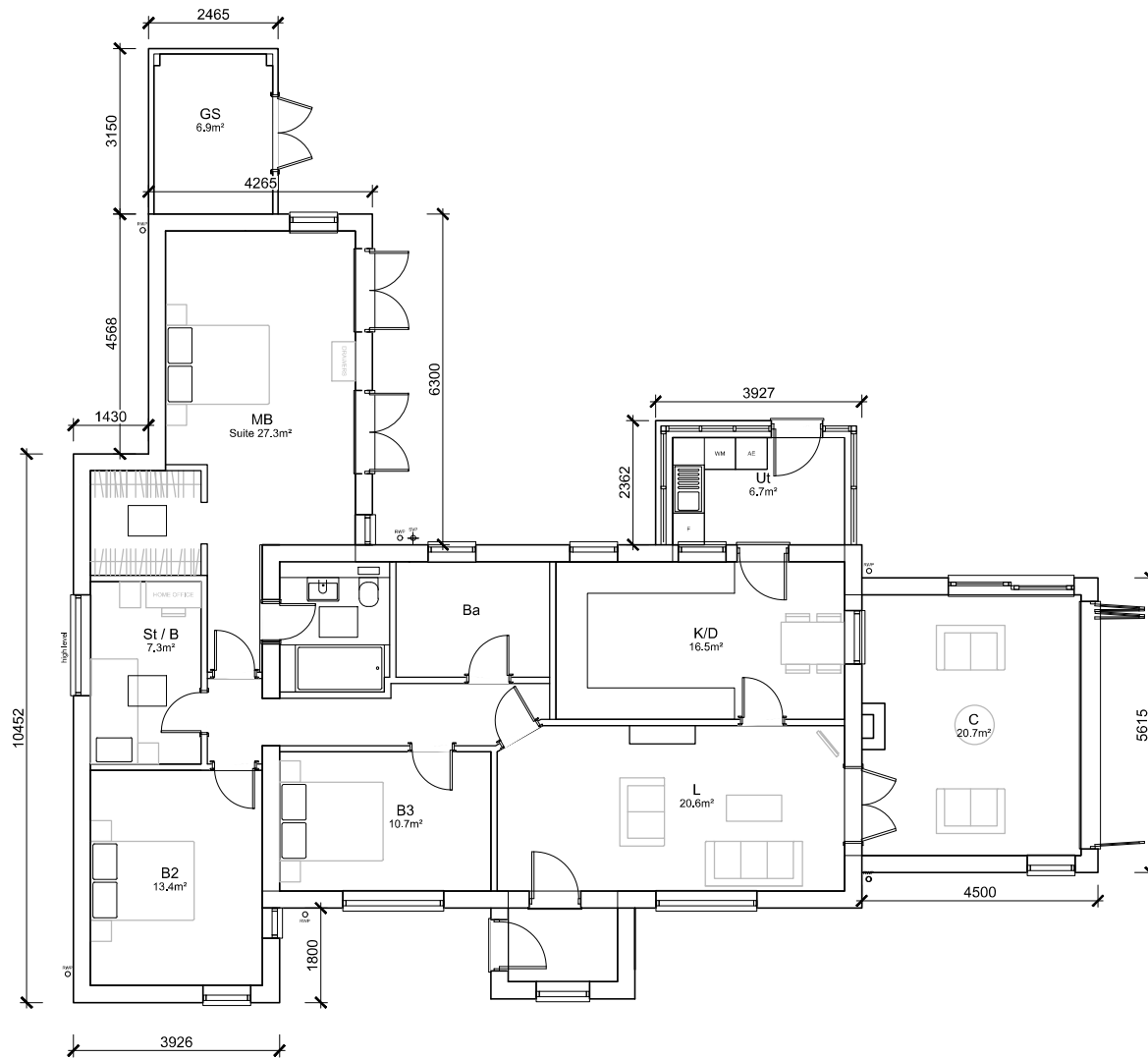
Date: Feb 20

DWG no: PL004

Rev -



1. Internal dimensions are structural, to the face of the studs, blockwork or structural concrete walls.
2. Plot areas indicated are gross internal areas, room areas indicated are finished areas, not structural. Accuracy of areas shown on plans are subject to tolerances of site construction and detail design.
3. For site setting out and ground levels, refer to civil engineer's drawings.
4. DPC shown indicative only and to be min 150 above external ground level.
5. Window openings are structural openings. Window manufacture to allow tolerances



Ground Floor
155m² + Garden St
(1,667 SQ. FT.)

Job: Greenlands, Swineshead

DWG: Proposed Floor Plan

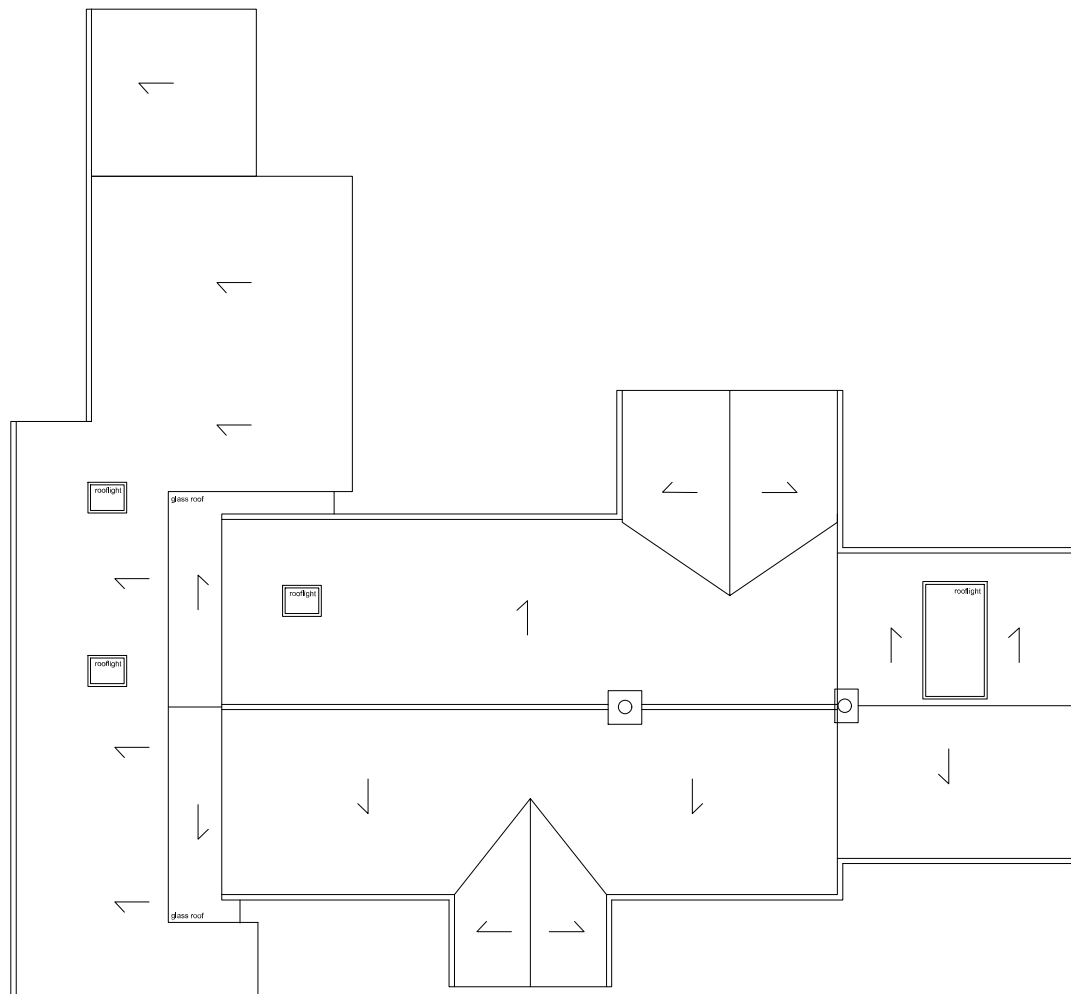
Scale: 1:100 @ A3

Date: Feb 20

DWG no: PL005 **Rev -**



1. Internal dimensions are structural, to the face of the studs, blockwork or structural concrete walls.
2. Plot areas indicated are gross internal areas, room areas indicated are finished areas, not structural. Accuracy of areas shown on plans are subject to tolerances of site construction and detail design.
3. For site setting out and ground levels, refer to civil engineer's drawings.
4. DPC shown indicative only and to be min 150 above external ground level.
5. Window openings are structural openings. Window manufacture to allow tolerances



Roof Plan



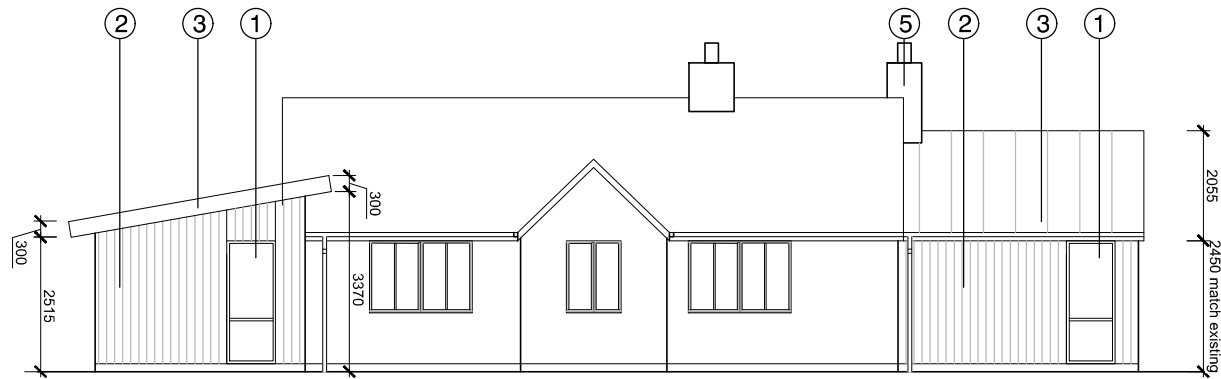
Job: Greenlands, Swineshead

DWG: Proposed Roof Plan

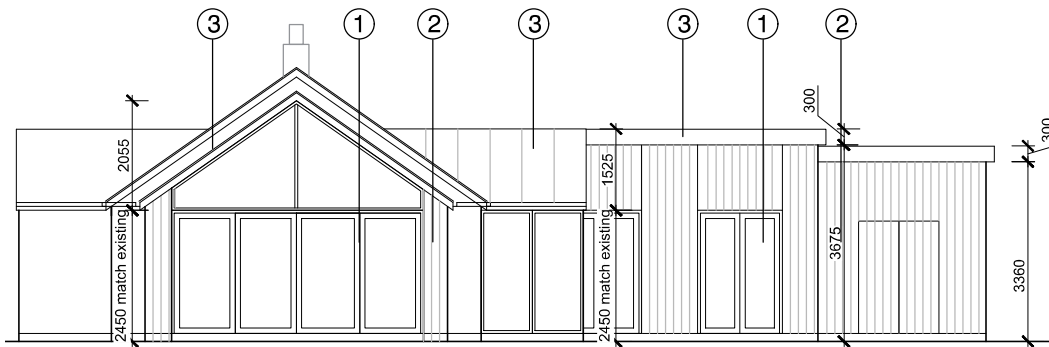
Scale: 1:100 @ A3

Date: Feb 20

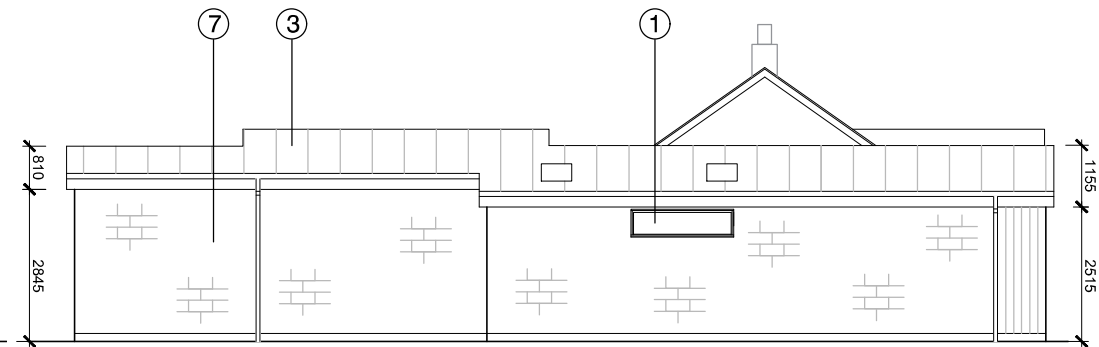
DWG no: PL006 **Rev -**



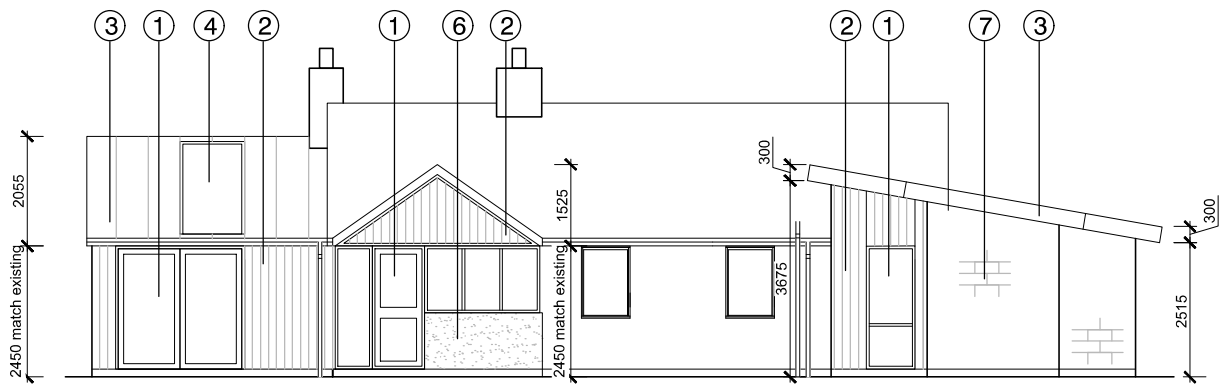
FRONT



RIGHT



LEFT



REAR



1. Internal dimensions are structural, to the face of the studs, blockwork or structural concrete walls.
2. Plot areas indicated are gross internal areas, room areas indicated are finished areas, not structural. Accuracy of areas shown on plans are subject to tolerances of site construction and detail design.
3. For site setting out and ground levels, refer to civil engineer's drawings.
4. DPC shown indicative only and to be min 150 above external ground level.
5. Window openings are structural openings. Window manufacture to allow tolerances

MATERIAL KEY

1. New Windows / Doors - Anthracite Grey
External, White Internal
2. Vertical Timber Cladding (Natural Finish)
3. Metal roof
4. Rooflights
5. New Chimney
6. New Rendered Wall
7. New Concrete Blockwork Wall

Job: Greenlands, Swineshead

DWG: Proposed Elevations

Scale: 1:100 @ A3

Date: Feb 20

DWG no: PL007 **Rev -**



Job: Greenlands, Swineshead

DWG: Rear Artist Visualisation

Scale: NTS @ A3

Date: Feb 20

DWG no: PL008 **Rev -**