

Happy February!! Our goal each month is to provide some design and lifestyle inspiration as well as recommendations, stories, and a peek into the lives of our amazing community.

SHOW A LITTLE

# LOVE

PRAYER SHAWL MINISTRIES

## Donate Scrap fabric and baubles for tactile mats



**Greenfield**  
Presbyterian Church

*Prayer Shawl Ministries* make lap mats for autistic children, memory care patients, and more. If you have someone who could use a mat, let us know!



This January, we were introduced to these two lovely ladies and their mission to provide lap mats with fabric and tactile items for autistic children, memory care and cancer patients. All they were looking for were some scrap pieces of fabric they could use for the mats. What they got so far, in just a few weeks, is three trips to Ruth Casper Design Studio and bags and bags of fabric samples. If you have any of these items, we would happily deliver them to this incredible ministry from Greenfield Presbyterian Church in Berkley.



- keys
- large buttons
- velcro
- yarn
- small pill bottles
- spools of thread
- large pieces of fabric
- Trims
- Fleece
- Small pieces of textured fabric
- Ribbon
- anything tactile that would be easy to sew on

*International  
Women's Day  
Event & marketplace  
March 8*

*1pm*

*@ The Michigan Design Center*

*hosted by Ruth Casper Design*

*RSVP to [patty@ruthcasperdesign.com](mailto:patty@ruthcasperdesign.com)*

*or call 248-315-3627*



# ON THE JOB SITE

Similar cabinetry looks completely different with unique pulls, wall treatments, and finishes. Ruth Casper Design customizes so your design is like no other.



For design inspiration, follow us on  
Instagram @ruthcasperdesign



RUTH CASPER DESIGN STUDIO

# NOW AN ANNA ELIZABETH DEALER

Looking for fabric for a small or large product, come into the studio and browse through all of the new fabrics Anna Elizabeth has to offer. We would happy to place an order for you.

*Anna Elizabeth*

It's Time to Make a Statement



# GET ORGANIZED

EACH MONTH: STEP CLOSER TO LESS CLUTTER



Organization is often a goal in homes, but it can be overwhelming! Each month we will suggest one item to go through and toss in your home. Hopefully by working in small categories, it will help you on your journey to a less clutter. It shouldn't take long, and if you are inspired to do more, let us know. We can help with a more advanced plan for organizing any space in your home.

## THIS MONTH: Writing supplies

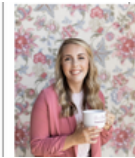
Do you have pens, highlighters, or markers with no ink left? How about broken pencils or crayons? Now is time to test them out and toss. Check your car too!



## Anna's Story



Amy



Samantha

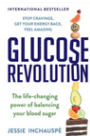


Sandy

The Anna Elisabeth line was developed to make a statement, both in style and life. We take pride in being woman-owned, operated, and managed. Working for a company that is predominantly operated and run by women empowers us to lift each other up, build relationships, and collaborate creatively in everything that we do. Having our first female and fourth-generation CEO, we felt it was the perfect time to pay tribute to Brooke's great grandmother, Anna Elisabeth. Anna was the mother of the founder of Greenhouse Fabrics, Arnold Bjork.



@glucosegoddess Account is led by this month's author of the Glucose Revolution. Her account shares short, easy to follow tips to incorporate in your nutritional goals.



Glucose Revolution by Jessie Inchausti. Amiee read this book in January and said it is amazing with great tips on how to keep glucose from spiking. We have been following her tips on our way to healthy glucose levels!

## Visit our studio

1700 Stutz Drive Suite 102E | Troy, MI 48084

For questions, please email: [Patty@ruthcasperdesign.com](mailto:Patty@ruthcasperdesign.com)

## Instagram

For design inspiration, follow us at @ruthcasperdesign

