

CONCRETE FUSION[®]

SEALER INC



CONCRETE REPAIR & ALL PURPOSE SEALER FOR CONCRETE

CONCRETE FUSION[®]
CONCRETE REPAIR



WEBSITE



HOW TO MIX & APPLY



ALL
PURPOSE CONCRETE
SEALER[®]
GLOSS



WEBSITE



ALL
PURPOSE CONCRETE
SEALER[®]
FLAT



HOW TO MIX & APPLY



A DIVISION OF
SIGNATURE



DIVERSIFIED
COVER SOLUTIONS

DIVERSIFIED COVER SOLUTIONS
913.212.0188

19780 Antioch Road * Bucyrus, Kansas 66013
DIVERSIFIEDCOVERSOLUTIONS.US

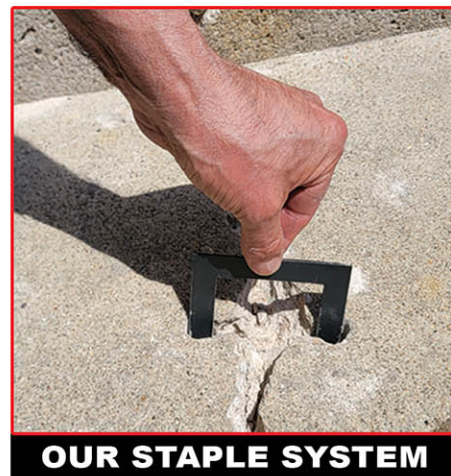
WHY OUR CONCRETE REPAIR SYSTEM WORKS



We are excited to introduce you to an innovative product that has been making waves in the construction industry - Concrete Fusion.

Concrete Fusion is a revolutionary system specifically designed to repair concrete with unmatched efficiency and effectiveness.

Do you have cracks in your concrete that seem impossible to fix permanently? Look no further! Concrete Fusion has the perfect solution to ensure a seamless repair process. Traditional methods may temporarily cover up the problem, but eventually, the newly added material delaminates from the existing concrete, leaving you back at square one.



OUR STAPLE SYSTEM

Concrete Fusion's innovative approach involves utilizing a staple system, in conjunction with our specially formulated cement, to bond with cracked surfaces and create a single, solid unit once again. This means that you can say goodbye to the hassle and expense of having to replace all the existing concrete. Our cement not only bonds impeccably with steel, wood, aluminum and other products, which ensures that the staples adhere firmly to the existing concrete, providing a long-lasting and robust repair solution.

By choosing Concrete Fusion, you not only save precious time, but also significant costs associated with traditional concrete repair methods. In fact, you can drive your car over the repaired area within just 24 hours of application, showcasing the speed and efficiency of our system.

Our system is versatile and can address a wide range of concrete issues, including repairing cracks, crazing, blistering, delamination, dusting, curling, efflorescence, scaling, spalling, and uneven concrete surfaces. Whatever your concrete problem may be, Concrete Fusion has you covered.

Don't let concrete repairs be a source of stress any longer. Trust Concrete Fusion to deliver exceptional results and transform your concrete services with ease.

If you are interested in learning more about our services or would like to schedule a demonstration, please feel free to contact us. We are excited to work with you and provide top-notch concrete repair solutions.

Thank you for considering Concrete Fusion for your concrete repair needs. We look forward to the opportunity to collaborate with you soon.

Warm Regards,

Santiago Sanchez
Owner & Founder

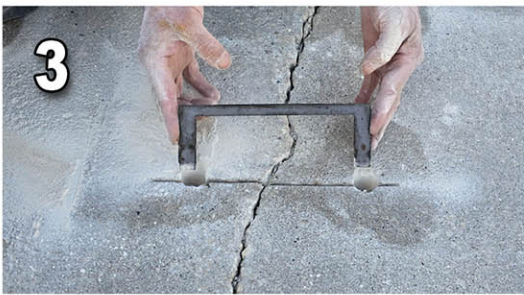
WHY OUR STAPLE SYSTEM WORKS



1 When you have a driveway or sidewalks that are cracked or uneven, you can go to the expenses of replacing the concrete, or you can simply have it repaired at a great cost savings.



2 We start by drilling holes parallel to the cracks. The reason for this is how we fuse two slabs of concrete.



3 We insert a 14 gauge steel staple. The reason for this is to hold both slabs of concrete together. Without this staple system, whatever you put in that crack - it will break again. Our cement will not only fuse to the existing cement, but it will also fuse to the steel staple, creating a strong bond.



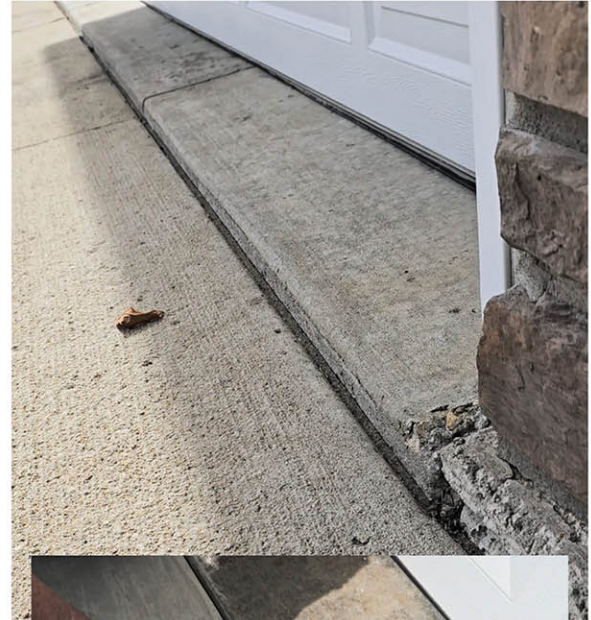
4 Once the staples have been put in place, and the cracks and the staples have been filled with Concrete Fusion product, we grind to make it a smooth finish.



5 Once the grinding is finished, we spray a topcoat with Concrete Fusion product, that is guaranteed to bond to the existing concrete, and we can also apply a broomed look to it for a finished look.



6 After the topcoat has been applied, we come back and cut the lines to give it a finished look.



When it comes to uneven concrete next to the garage, a lot of people mud-jack it and raise the slab of concrete even with the other side. The problem with that, is that eventually - it settles itself back down. We are the opposite of that. We put Concrete Fusion product on top, and level it without disturbing the ground beneath.



As you can see on the left side - normal cement absorbs water, which eventually salt will delaminate the upper layer of the cement, which causes blistering and popping. On the right side, water runs off and will not soak into the concrete. This is what is unique about our product.



BEFORE

AFTER

**WE CAN REPAIR SIDEWALKS, DRIVEWAYS, FOUNDATIONS,
DECORATIVE CONCRETE, PARKING LOTS, RETAINING WALLS,
HOG CONFINEMENTS, POULTRY PROCESSING PLANTS,
CONCRETE GRAIN BINS, ROADS AND BRIDGES,
AND ANY OTHER TYPE OF CONCRETE.**

CONCRETE LINTEL
Before Patching



Patched



With
CONCRETE FUSION
Concrete Repair Product

Finished



Skim coat with our mix



FOUNDATION CRACK



We patch with
CONCRETE FUSION
Concrete Repair Product



We drill holes for our Staple System



Our Staple System is made from
14 gauge steel, and because
the staple is 90°, it gives extra
strength so it will not bend out.

GARAGE FLOOR

BEFORE



We can repair garages that have been
ruined by the salt, where the cream
of the concrete has been destroyed.
(sample above)

Below is the finished garage floor.
And it is guaranteed
not to delaminate, unlike other
products that will delaminate



AFTER



Skim coat with our mix



DIVERSIFIED
COVER SOLUTIONS

DIVERSIFIEDCOVERSOLUTIONS.US