



*"PASSIONATE ABOUT SURVEYING"*

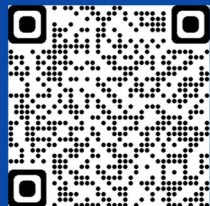
*We'd love to hear from you!  
Please reach out at your convenience  
so we can discuss your project.*

Telephone:

Ben Munroe +44 (0)7505150933,  
Darren Pearson +44 (0)7999905658,  
Andy Watt +44 (0)7983624703

Email: [info@revolutionsurveys.com](mailto:info@revolutionsurveys.com)

Web: [www.revolutionsurveys.com](http://www.revolutionsurveys.com)



UNIT 20,  
HARTLEPOOL ENTERPRISE CENTRE,  
BROUGHAM TERRACE,  
HARTLEPOOL, TS24 8EY, UK.

©REVOLUTIONSURVEYSLTD

Cert. No.: 242271



# REVOLUTION SURVEYS LTD.

**DIMENSIONAL CONTROL SPECIALISTS,  
PROVIDING ALL ASPECTS OF ENGINEERING  
& LAND SURVEYING SERVICES.**

*"PASSIONATE ABOUT SURVEYING"*

# Introduction

Based in the north-east of England, Revolution Surveys Ltd and our team of engineering surveyors have reliably provided a high-quality surveying service to a wide range of sectors for over 20 years.

We strive to exceed all our clients' expectations, providing a consistent cost-effective service with comprehensive 'end-to-end' solution for all their survey requirements, from project concept to completion.

In an industry where there is no room for error, Revolution Surveys Ltd employs experienced personnel trained in all aspects of surveying. Everyone involved with the company align to provide an accurate and cost-effective surveying service, together with a fast turnaround of data when time is of the essence.

We endeavour to evolve our professional skills in developing technologies and techniques, using state-of-the-art equipment and methods, which allows us to remain at the forefront of the industry.

At every stage of every project, we adhere to the utmost professional standards of the surveying & engineering industry.



*"Quality means doing it right when no one is looking."*

# Services

Revolution Surveys Ltd provides a wide range of surveying services, including:

- Dimensional Control
- Topographical Surveys
- Flange/Flatness Laser Surveys
- Aerial Drone Inspection Surveys
- 2D/3D CAD Modelling
- Site Engineering Surveys
- Laser Scanning
- Piping/Tank/Vessel Surveys
- Shipboard Surveys
- Tilt, Settlement & Monitoring Surveys
- Survey Consultancy Services



*"Quality is never an accident; it is always the result of high intention, sincere effort, intelligent direction and skilful execution; it represents the wise choice of many alternatives."*



# Dimensional Control

Our expertise in providing dimensional control is unrivalled.

Dimensional Control combines proven engineering survey techniques and state-of-the-art survey equipment to collect highly accurate as-built 3D data on new or existing mechanical, construction, structural, and civil engineering projects. This precisely collected 3D data can then be used during project planning and execution phases to avoid uncertainty related to interface integration and measurement irregularities.

Our engineering surveyors have been involved in numerous major projects involving dimensional control services, providing a vital quality assurance/quality control (QA/QC) role, reducing work scope and labour costs, improving site safety, and enabling companies to fabricate in desired locations etc.

Revolution Surveys Ltd are able to provide overall QA/QC dimensional control services throughout all phases of a project. Our first-time-fit philosophy avoids any unexpected hold ups and minimises the risk of costly corrective works.



*“Quality is not what happens when what you do matches your intentions.  
It is what happens when what you do matches your customers’  
expectations.”*

# Topographical Surveys

A topographic (or land survey) is a highly detailed and precise representation of a site or area which maps boundaries, manmade and natural features, levels and other existing factors such as roads, highways and buildings in the vicinity of the site or area.

Gathering precise geospatial information early on in a design or planning process can be critical; it can save time and reduce costs by providing other disciplines (such as designers or architects) a digitised depiction of how the land lies, and should be commissioned before any detailed works take place.

Our experienced team of surveyors can rapidly and precisely obtain all required topographical data using a combination of state-of-the-art Leica total stations and GPS receivers.

Deliverables from a topographical survey can be presented in a variety of ways, ranging from a regular 2D Plan to a complex 3D CAD drawing.

All our topographical surveys are fully compliant with industry specifications (RICS standards) and can be tailored to suit our clients’ specific requirements.



*“Be a yardstick of quality. Some people aren't used to an environment  
where excellence is expected.”*



# Flange/Flatness Laser Surveys

A Flatness Laser Survey, is used to measure the flatness of a surface against a constant reference; in this case an ultra-flat plane of laser light with extreme accuracy.

Revolution Surveys Ltd are able to offer complete, comprehensive flatness surveys using sub-millimetre total stations and Easy-Laser® measurement systems to ensure requirements are met on both accuracy and repeatability.

These types of surveys are used for a variety of purposes i.e., measuring the flatness of machine bed foundations, flatness of crane pedestals, structural base plates and now predominantly WTG (Wind Turbine Generator) Foundation flanges.

All measurements can be viewed on the system as live values and all results are stored for filing, traceability and quality assurance requirements.

Upon survey completion, a full comprehensive report containing graphs and measurement data is produced for analysis; here we can collate measurements in the same place, compare to theoretical values to ensure tolerances are met, produce images and also make more advanced calculations.

All aspects of flange measurement information can be obtained including: position, flatness & level, ovality, parallelism, angular displacement, O-Ring groove, bolt-hole rotation, bolt-hole diameter, flange radius.



*“Quality is not an act; it is a habit.”*

## Aerial Drone Inspection Surveys

Inspect structures or areas in those hard-to-reach places. Our drones can capture close-range, high-resolution images or videos, ideally suited to inspect rooftops or inaccessible areas and is a safer alternative to scaffolding, MEWP's or rope access.

## 2D/3D CAD Modelling

Our team can provide comprehensive in-house 2D/3D CAD modelling to our clients.

## Site Engineering Surveys

We provide a full range of site engineering surveys, including setting-out surveys, as-built surveys, site control establishment/verification, volumetric calculations.

## Laser Scanning

We offer 3D laser scanning services using advanced technology, resulting in high accuracy point cloud data deliverable in a variety of ways.

## Piping/Tank/Vessel Surveys

From single spool iso's to full tank/vessel replacements or hook-ups, our team can provide surveys or engineering drawings to cater for your needs.

## Shipboard Surveys

Our team can deliver shipboard surveys of all sizes, both afloat or ashore.

## Tilt, Settlement & Monitoring Surveys

Using the latest technology, we can provide high quality, reliable data which reduces the risk of unnoticed tilt, settlement or movement through checking of the as-built environment.

## Survey Consultancy Services

Revolution Surveys Ltd is committed to assist all our clients with our surveying expertise in every way possible, providing sound, experienced advice to cater for all your surveying needs.

*“Quality begins on the inside then works its way out.”*

# Clients / Projects

# Notes

Our experienced team of surveyors have been involved in a multitude of projects serving many clients, including:



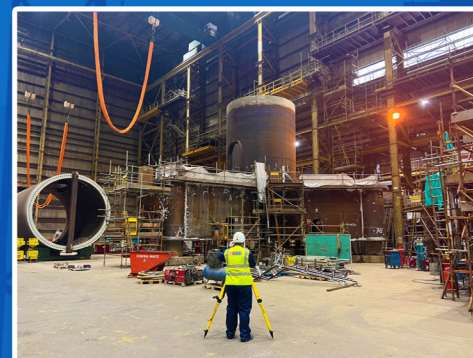
Here at Revolution Surveys Ltd, we are fully committed to customer service. It is our aim to ensure all projects undertaken achieve the highest standards of safety, reliability and operational integrity.

With this in mind, we recognise and implement the requirements of ISO 9001:2015; the internationally recognised quality management system for quality assurance.

*"Quality is the result of a carefully constructed cultural environment. It is the fabric of our organisation, not part of the fabric."*

*"Quality is never an accident. It is always the result of intelligent effort."*





*"Achieving total quality is a journey, not a destination."*

*"In the race for quality, there is no finish line."*