

A woman with light brown hair and dark eyes is wearing a white wedding dress. The dress features a high, wide collar made of intricate white lace with floral and leaf patterns. The bodice is strapless and has a sweetheart neckline. The skirt is full and has a ruffled hem. She is standing with her hands on her hips against a plain, light-colored background.

ALLISON WEBB

N E W   Y O R K

Fall 2019

## COCO 4950

Ivory over Cashmere silk organza and French lace modified ballgown, dropped waist corset bodice with molded cups and delicate spaghetti straps. Hand placed lace appliques on skirt and chapel train. Also available in Ivory.







## CHARLOTTE 4951

Ivory blended dupioni modified A-line strapless gown with draped empire sweetheart bodice and chapel train. Shown with illusion pearl encrusted bolero.



## EVERLEIGH 4952

Ivory over Cashmere silk organza A-line gown with beaded and embroidered corset bodice with molded cups and delicate spaghetti straps. Circle skirt with chapel train. Also available in ivory.







## MARCELLA 4953

Ivory twinkle tulle A-line gown, illusion encrusted bodice with plunging V-neckline. Circle skirt with chapel train.



## EDEN 4955

Snow blended faille ballgown with box pleats and pockets. French lace corset bodice with modified sweetheart neckline, ruched waistband with detachable cumerbund and bow, chapel train. Also available in Pearl.







## LENNOX 4956

Pearl blended faille fit to flare gown. Pearl and crystal encrusted French Chantilly lace bodice with plunging V-neckline. Ruched asymmetrical draping on skirt, chapel train.



CECE 4957

Ivory tulle ballgown with strapless bodice and crescent neckline. Floral beaded embroidery on bodice, trailing onto skirt with chapel train.







## DAHLIA 4959

Snow micro-sequin sheath with modified sweetheart neckline. Sheer corset back with floral beading, chapel train. Shown with coordinating illusion turtleneck topper with floral beading.



DAHLIA 4959





## WHITLEY 4960

Pearl blended faille fit to flare gown. Draped off the shoulder bodice with low V-back, buttons to bow detail on chapel train. Also available in Snow.







## STOCKTON 4961

Ivory blended dupioni fit to flare gown with beaded and embroidered corset bodice with molded cups and delicate spaghetti straps. Detachable bow at back, chapel train.



## THATCHER 4962

Tulle ballgown with strapless bodice and crescent neckline. Pearl, crystal and moonstone encrusted bodice. Beading degrades onto skirt with asymmetrical tiers and chapel train. Shown with coordinating encrusted turtleneck topper with bow.









## EMME 4963

Ivory stretch crepe modified fit to flare gown with boat neckline and open back. Detachable black bow, chapel train. Bow also available in Ivory.





JUNE  
4800



BELLA  
4801



KINGSLAND  
4803



CALLAWAY  
4804



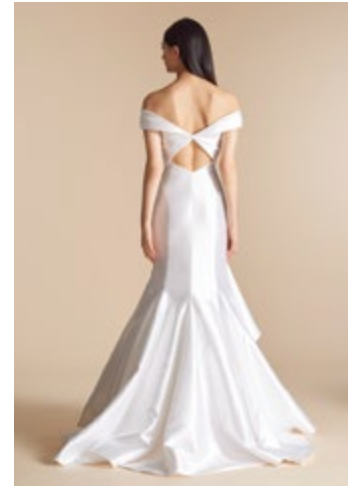
ASHBURN  
4805



CLARA  
4807



DEVEREAUX  
4808



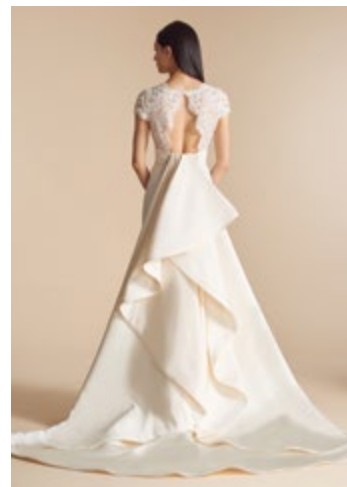
CARTER  
4811



BUCHANAN  
4812



AUGUSTA  
4815



WAVERLY  
4816



ADDISON  
4817



EMERY  
4850



MEREDITH  
4851



CAMILLA  
4852



ISLA  
4854



CARLISLE  
4855



CHAPIN  
4856



LAUREL  
4857



PENELOPE  
4858



BAXLEY  
4859



JOSETTE  
4861

CARRIE CRIGLER

Director of Sales

800.686.7880 ext.112 • [carrie@jlmcinc.com](mailto:carrie@jlmcinc.com)



ALLISON WEBB  
NEW YORK

A Division of JLM Couture  
525 Seventh Avenue, Suite 1703  
New York, NY 10018  
[www.jlmcouture.com](http://www.jlmcouture.com)