



Blush

FRANCESCA AVILA

SPRING | 2022



NINON
STYLE 12200



Ivory/Cashmere floral metallic lace modified sweetheart neckline with spaghetti straps into A line skirt with pockets. *Matching veil available.*



CAMILLE

STYLE 12201



Ivory/Cashmere floral metallic plunging spaghetti strap bodice. Cumberbund waist and fit-to flare skirt with detachable flutter sleeve and detachable overskirt. Gown only available for reorders. *Matching veil available.*



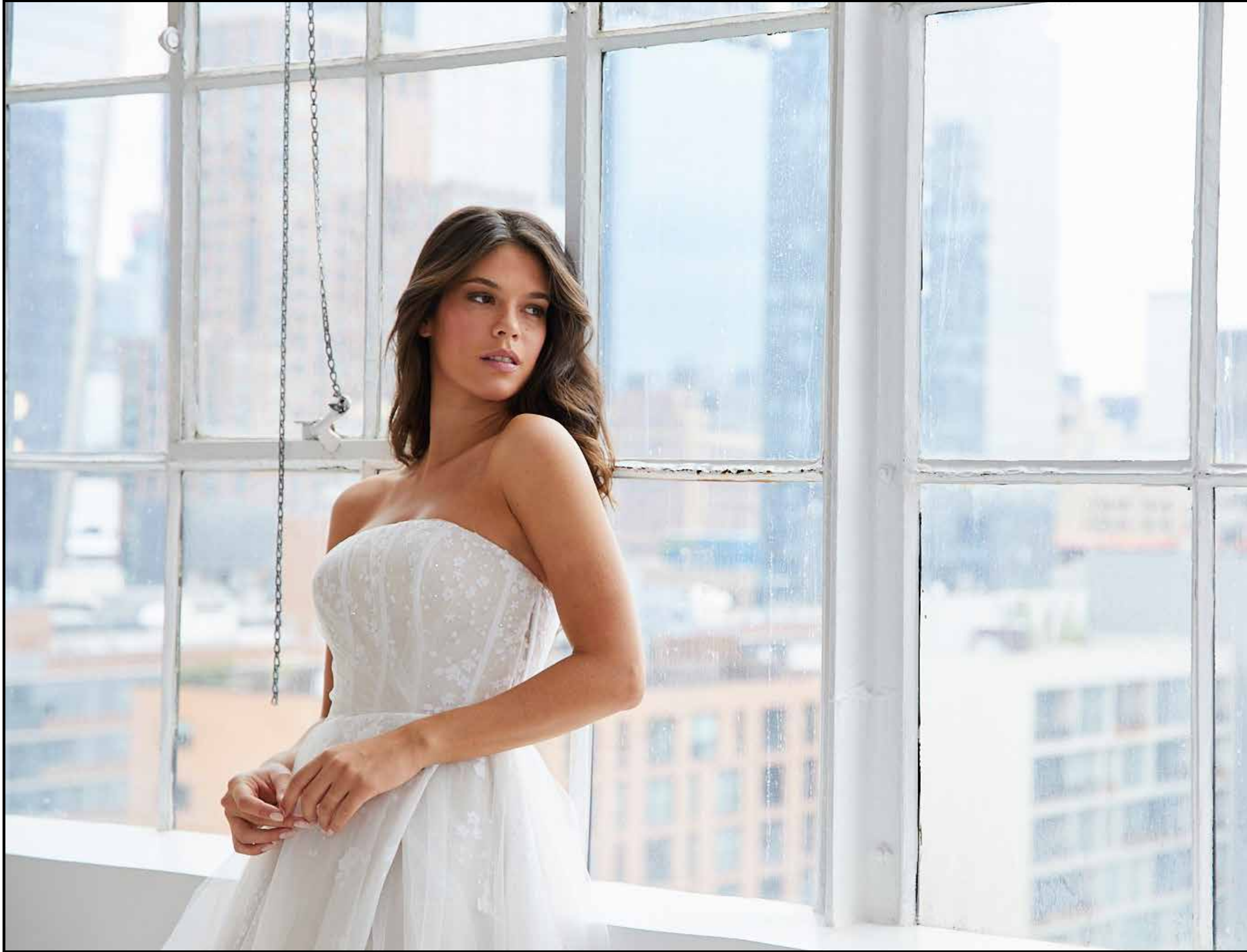
FELICE

STYLE 12202



Ivory tulle over daisy sequins and sparkle tulle with cashmere lining. Curved strapless bodice with exposed boning, and A-line skirt.







AGATHE
STYLE 12203



Ivory 3-piece organza ball gown with draped
bandeau top, skirt, and detachable puff sleeve.
Skirt only available for reorders.





OMBELINE

STYLE 12204

Ivory (only) crepe slip dress with beaded straps.



JUSTYNE

STYLE 12205



White Mikado ballgown with plunging neckline into a cummerbund waistline, double beaded strap detail on back and full skirt with side slit.





NINETTE
STYLE 12206



Ivory soft A-line chiffon skirt with a plunging beaded bodice with spaghetti straps.



EDITH
STYLE 12207



Ivory/Cashmere floral embroidered organza A-line gown with sheer V-neck cummerbund bodice with exposed boning and open back with tie detail.

LILIANE

STYLE 12208



Ivory floral embroidered organza in a boned, demi cup bodice with A-line skirt (with pockets) and detachable off-the-shoulder puff sleeves.



YVETTE

STYLE 12210



Blush tulle ball gown with sparkle tulle.
Corset bodice with draped illusion one shoulder
into detachable sheer puff sleeve.
Detachable tulle bow and streamers at waistline.





ODETTE

STYLE 12211

Modern Ivory/Cashmere crescent strapless ballgown with exposed boning, asymmetrical draped sparkle tulle with 3-D floral lace trickling into asymetric horsehair trimmed skirt over sparkle tulle.





MIRABELLE

STYLE 12212



Ivory floral burnout organza over cashmere lining
in a deep ruched sweetheart strapless bodice, A-line skirt,
with a detachable draped bishop sleeve.







NOVA
STYLE 12213 | 12213_DRO



Ivory over cashmere 2-piece dress.
Cashmere mini-sequined modified A-line gown, a plunging V-neckline with spaghetti straps and low open back. Ivory tulle overdress with tie neck detail, cold shoulder billow sleeves, full circular skirt, embroidered appliqués and ribbon trim at waist.



LAYLA

STYLE 12214

Sunset sparkle tulle ball gown with draped sweetheart neckline and detachable shrug. Crystal button detail at back, horsehair banded cascading skirt with sheer side pockets.





LUCA
STYLE 12215



Ivory floral-appliquéd sparkle tulle ball gown,
plunging V-neckline with low open back
and sheer side pockets.

NERIDA
STYLE 12216



Ivory lace and sparkle tulle over Cashmere lining
fit to flare gown, V-neckline with bell sleeves,
sheer openback with crystal button detail.



