

TARGETING NEW DISCOVERIES

COPPER & GOLD IN THE SOLOMON ISLANDS

DISCLAIMER AND CAUTIONARY NOTES

DISCLAIMER

Sankamap Exploration Inc. is a Canadian mineral exploration company listed on the Canadian Securities Exchange, or CSE, which is operated by CNSX Markets Inc. Neither the CSE nor its Market Regulator (as that term is defined in the Trading Rules and policies of the CSE) accepts responsibility for the adequacy or accuracy of information delivered in this presentation.

INFORMATION ONLY, NO OFFER OR SOLICITATION, NO UNAUTHORIZED DISTRIBUTION

This presentation does not constitute an offer to sell or solicitation of an offer to buy any of the securities described herein. The sole purpose of this presentation in verbal, paper or electronic form is strictly for information. This document is strictly private and confidential, and is intended for the person to whom it is provided by Sankamap Exploration Inc. The contents of the document may not be copied, distributed or reproduced in whole or in part, nor passed to any third party, without the prior, written permission of Sankamap Exploration Inc.

FORWARD LOOKING STATEMENTS

Certain statements and/or graphics in the Company's press releases, website information and corporate displays, among others, constitute "forward-looking statements". These statements are based on information currently available to the Company and the Company provides no assurance that actual results will meet management's expectations. Forward-looking statements include estimates and statements that describe the Company's future plans, objectives or goals, including words to the effect that the Company or management expects a stated condition or result to occur. Forward-looking statements may be identified by terms such as "believes", "anticipates", "expects", "estimates", "may", "could", "would", "will", or "plan", or their conditional or future forms. Since forward-looking statements are based on assumptions and address future events and conditions, by their very nature they involve inherent risks and uncertainties. Actual results relating to, among other things, results of exploration, project development, reclamation and capital costs of the Company's mineral properties, and the Company's financial condition and prospects, could differ materially from those currently anticipated in such statements for many reasons such as: changes in general economic conditions and conditions in the financial markets; changes in demand and prices for minerals; litigation, legislative, environmental and other judicial, regulatory, political and competitive developments; technological and operational difficulties encountered in connection with the activities of the Company; and other matters discussed in this presentation. This list is not exhaustive of the factors that may affect any of the Company's forward-looking statements. The Company does not undertake to update any forward-looking statement that may be made from time to time by the Company or on its behalf, except if required to do so by applicable securities laws. These and other factors should be considered carefully, and recipients should not place undue reliance on the Company's forward-looking statements.

FORWARD-LOOKING STATEMENTS AND/OR INFORMATION RELATED TO EXPLORATION

Relating to exploration, the identification of exploration targets and any implied future investigation of such targets on the basis of specific geological, geochemical and geophysical evidence or trends are future-looking and subject to a variety of possible outcomes which may or may not include the discovery, or extension, or termination of mineralization. Further, areas around known mineralized intersections or surface showings may be marked by wording such as "open", "untested", "possible extension" or "exploration potential" or by symbols such as "?". Such wording or symbols should not be construed as a certainty that mineralization continues or that the character of mineralization (e.g. grade or thickness) will remain consistent from a known and measured data point. The key risks related to exploration in general are that chances of identifying economical reserves are extremely small.

THIRD-PARTY INFORMATION

Certain statements and/or graphics in the Company's press releases, website information and corporate displays, among other materials, may contain third-party historical data and other information that have not been verified by Sankamap Exploration Inc. and may not be accurate or complete, therefore the information should not be relied upon.

QUALIFIED PERSONS

John Florek, M.Sc., P.GEOL. & Michael Dufresne, M.Sc., P.Geol., P.Geo., serve as a Qualified Persons, as defined by National Instrument NI 43-101, responsible for reviewing and approving the technical content of all materials publicly disclosed by Sankamap Exploration Inc., including the contents of this presentation.

MANAGEMENT & DIRECTORS

JOHN FLOREK *Chief Executive Officer*

+30 years of technical and senior management experience working for major and junior mining companies. He has helped identify and develop significant asset value for mines and exploration projects from grassroots through to development and is currently on the board of McEwen Mining. John has worked for several majors including, BHP, Placer Dome, Barrick, Teck, and Detour Gold/Kirkland Lake Gold/Agnico Eagle.

JOHN WILLIAMSON *Chairman and Director*

Professional Geologist (P. Geol) with +35 years experience in the global mining sector. John has been chairman and founder of >20 successful companies. He is the Founder of the Metals Group of companies, having raised more than \$1B in public and private entities over the past 35 years.

SEAN MAGER *CFO and Director*

+30 years of experience in the global mining sector, extensive expertise in corporate development, stakeholder relations, regulatory affairs, finance, and operations. Co-Founder of the Metals Group.

KRYSTLE ADAIR *Exploration Manager*

13+ years experience in mineral exploration managing exploration projects on multiple deposit types across the Americas. She has worked for multiple Metals Group companies on projects within Canada, USA, and Peru. She holds a B.Sc. in Geology and is a registered professional geologist (P.Geo) with Engineers and Geoscientists British Columbia.

ALEX HORSLEY *Investor Relations*

+20 years' experience in the mining sector and capital markets with a focus on investor relations, finance, marketing, management, corporate development, and communications. Director – Corporate Development of Emperor Metals – AUOZ.CSE.

ARTHUR HANNETT *Director*

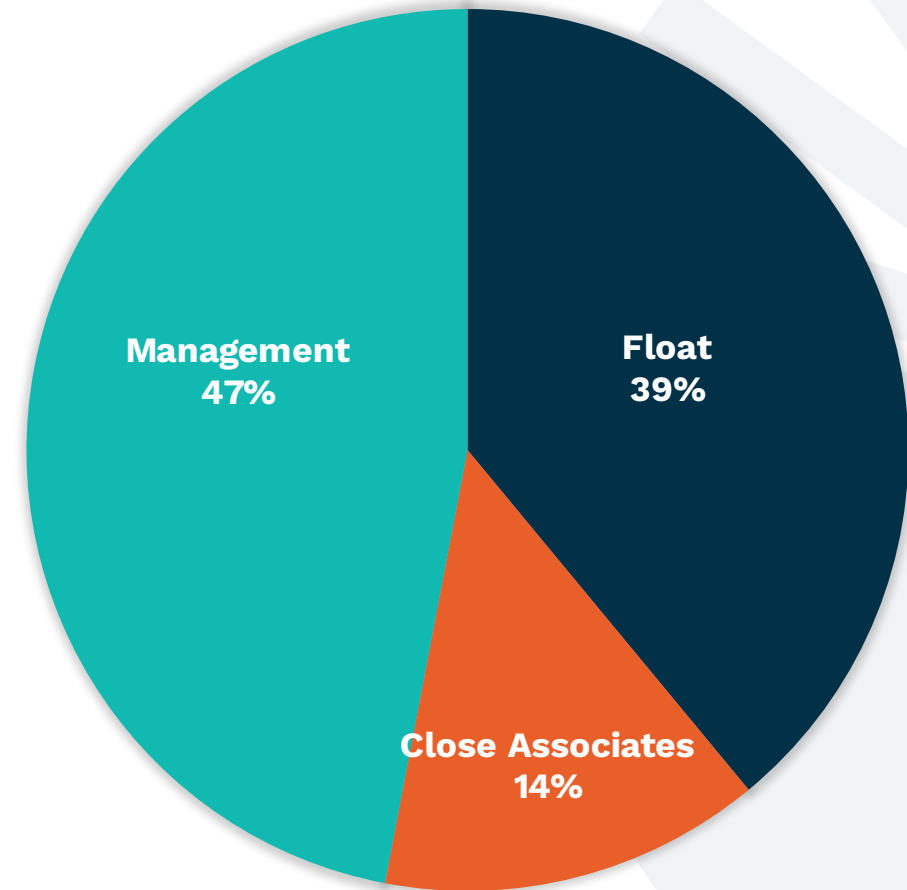
National of Papua New Guinea's Bougainville Island. Professional engineer with 17+ years of experience in the Mining Sector working for majors like Placer Dome, Barrick, Glencore, and Agnico Eagle.

SHARE STRUCTURE

Proforma Share Ownership

Common Shares (I&O)	43,363,118
Options	4,250,000
Warrants (inc. agents/finders warrants)	7,917,229
Market Cap	~C\$10M
Share Price	~C\$0.23
Share Price Range (52 week range)	C\$0.04-0.28

As of June 26, 2025





CORPORATE HIGHLIGHTS



Why Sankamap?



¹ Historic Grab sample from SolGold Kuma Review June 2015 and SolGold plc Annual Report 2013/2012

100% OWNED, DRILL READY ASSETS

Two high-potential copper and gold properties (Fauro and Kuma properties) in the Solomon Islands - Oceania Project.

PREVIOUS SAMPLE RESULTS INCLUDE:

11.7% Cu and 13.5 g/t Au¹, 173 g/t Au¹, drill intercept 35m of 2.08 g/t Au¹.

PROVEN GEOLOGICAL TREND

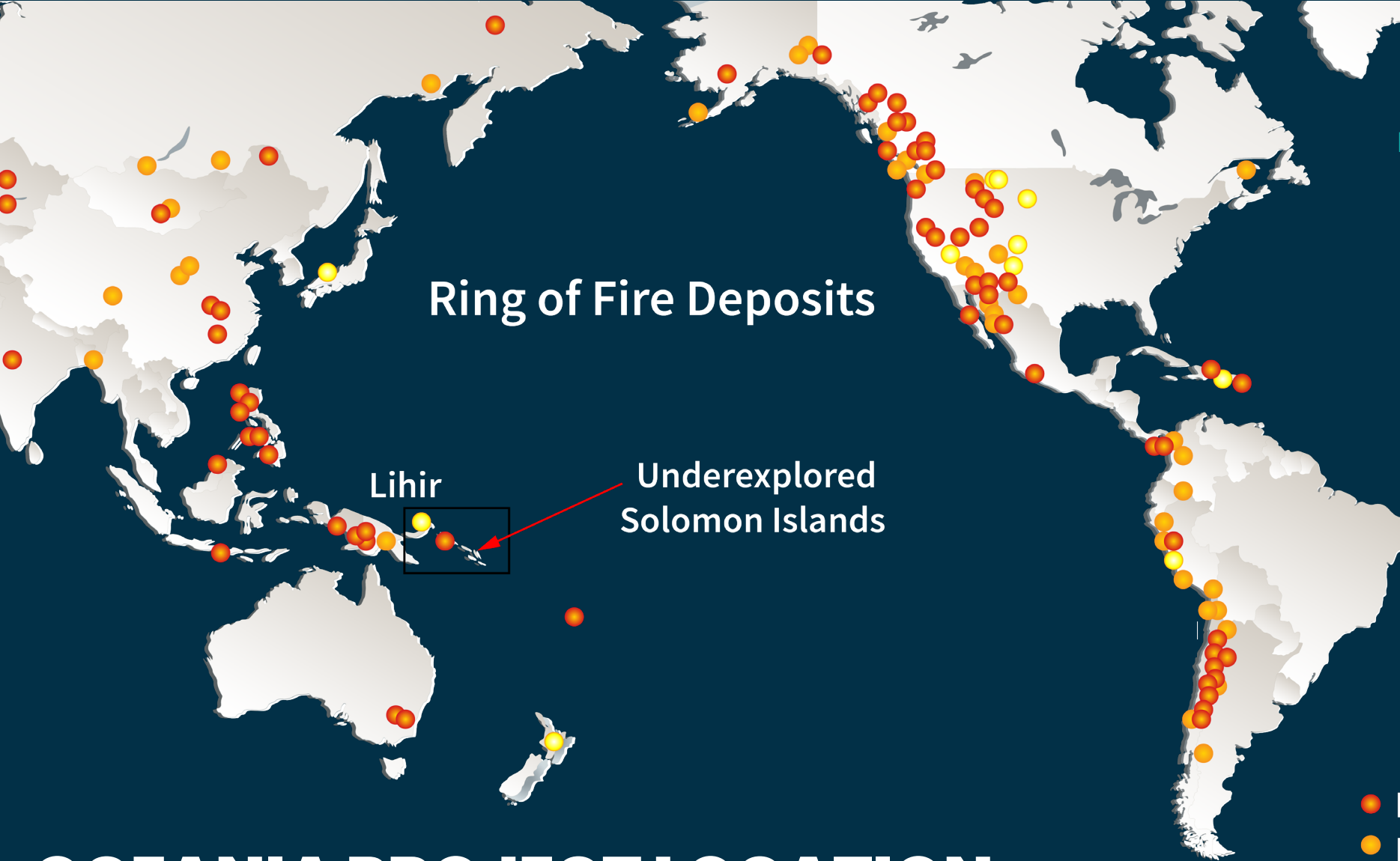
Strategically positioned along the same mineral belt as major deposits, including Newmont's Lihir Mine.

MINING-FRIENDLY JURISDICTION

Underexplored region with strong government support and a skilled local workforce.

MAJOR EXPLORATION UPSIDE

Advance target definition with an integrated exploration program designed to optimize Q4 2025 drilling.



Ring of Fire Deposits

Lihir

Underexplored
Solomon Islands

Location within the Ring of Fire

- One of the last underexplored regions within the Ring of Fire
- The Ring of Fire is a globally significant belt rich in porphyry and epithermal deposits
- Highly prospective trend hosts world-class assets, including the 71.9 Moz Lihir Gold Mine¹

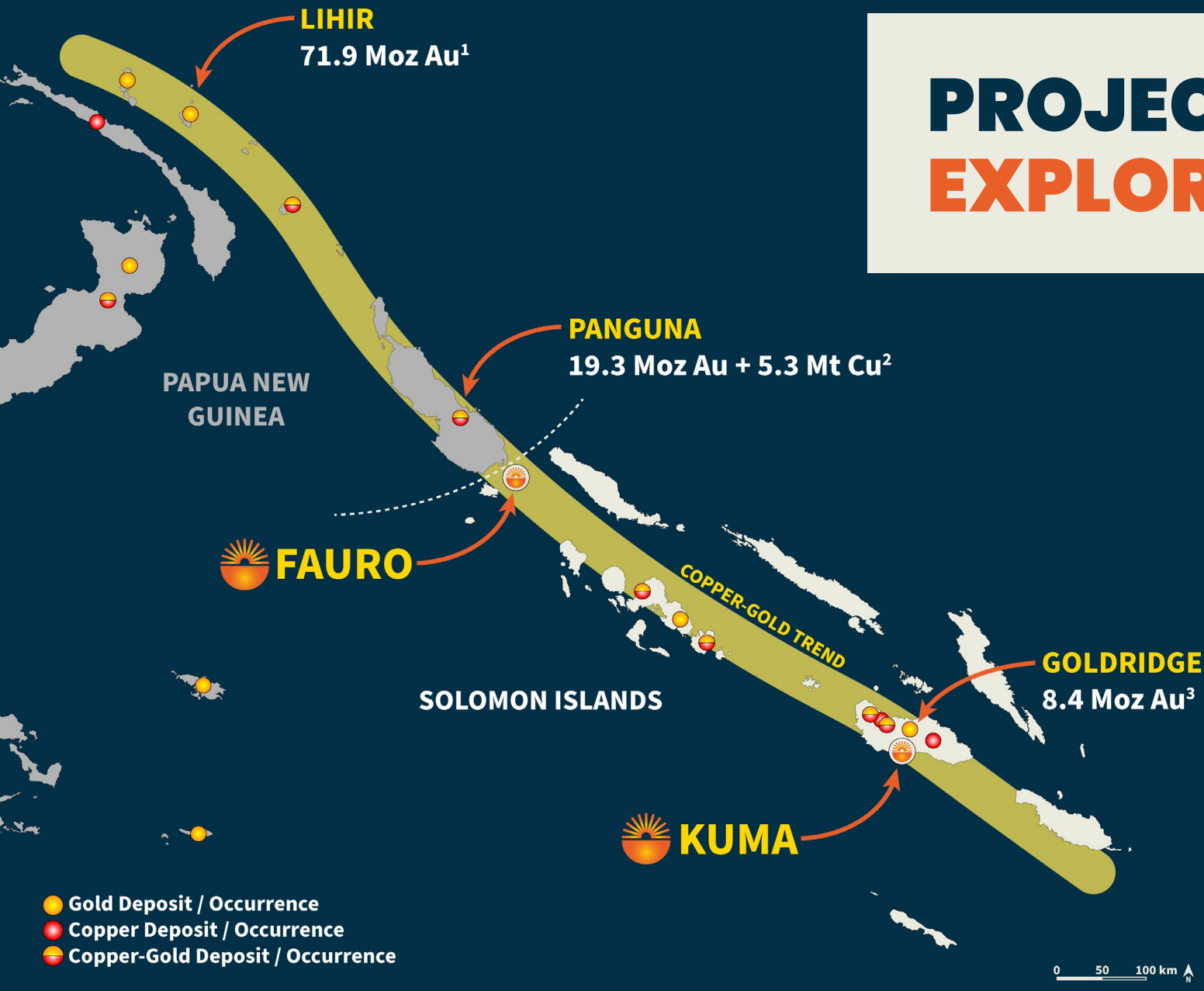
1. Newcrest Technical Report, 2020 (Lihir: 310 Mt containing 23 Moz Au at 2.3 g/t P+P, 520 Mt containing 39 Moz Au at 2.3 g/t indicated, 81 Mt containing 5 Moz Au at 1.9 g/t measured, 61 Mt containing 4.9 Moz Au at 2.3 g/t Inferred)

- Porphyry Cu-Au
- Porphyry Cu
- Epithermal

OCEANIA PROJECT LOCATION

SOLOMON ISLANDS

PROJECT PORTFOLIO: EXPLORATION HIGHLIGHTS



Kuma Property

- Grab samples up to **11.7% Cu** and **13.5 g/t Au⁴**
- Km-scale Cu-Au anomaly

Fauro Property

- Grab sampling: **173 g/t Au⁴**
- Trench sampling: **8m of 27.95 g/t Au⁴**
- Drill intercept: **35m of 2.08 g/t Au⁴**

1. Newcrest Technical Report, 2020 (Lihir: 310 Mt containing 23 Moz Au at 2.3 g/t P+P, 520 Mt containing 39 Moz Au at 2.3 g/t indicated, 81 Mt containing 5 Moz Au at 1.9 g/t measured, 61 Mt containing 4.9 Moz Au at 2.3 g/t Inferred)

2. Bougainville Copper Ltd. Annual Report, 2016 (1.5 Mt containing 16.1 Moz Au at 0.33 g/t and 4.6 Mt Cu at 0.3 % Indicated, 300 Mt containing 3.2 Moz Au 0.4 g/t and 0.7 Mt Cu Inferred)

3. JORC compliant Ore reserves and Mineral Resources at 31 March 2018 with a 0.6 g/t Au cut-off (Hong Kong Stock Exchange release of 13 August 2020 by Wanguo International Mining) (1Moz measured, 0.9 Moz indicated, 1.6 Moz inferred, 1.43 Moz probable)

4. Historic Grab sample from Sol Gold Kuma Review June 2015 and SolGold plc Annual Report 2013



KUMA PROPERTY

Within a World-
Class Cu-Au Trend

KUMA PROPERTY OVERVIEW

Property Summary

- 100% owned, 43 km² property
- Drill-ready porphyry target, potential for large-scale system
- Past results include up to 11.7% Cu and 13.5 g/t Au

Location & Infrastructure

- Located 37 km SE of capital Honiara on Guadalcanal Island
- Year-round access; 20 km from Gold Ridge mine

2025/2026 Exploration

- 2025/2026 exploration to advance mineralization definition via sampling, airborne geophysics, and drilling

PAPUA NEW GUINEA

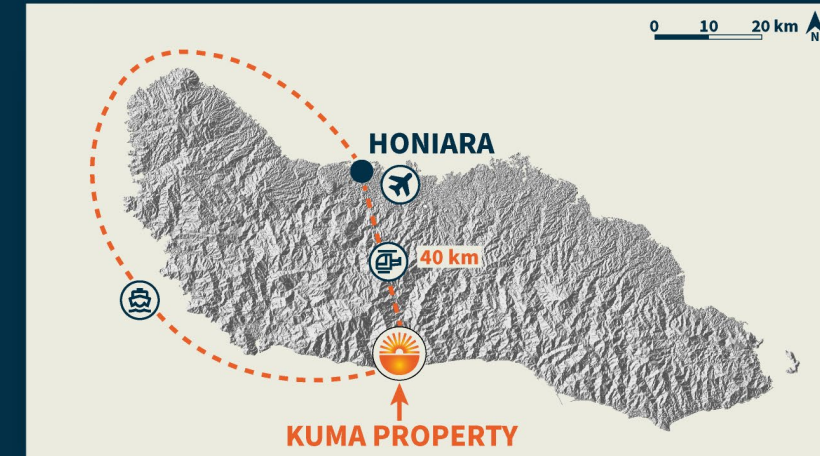
PANGUNA
19.3 Moz Au +
5.3 Mt Cu²

COPPER-GOLD TREND

SOLOMON ISLANDS

GOLDRIDGE
8.4 Moz Au³

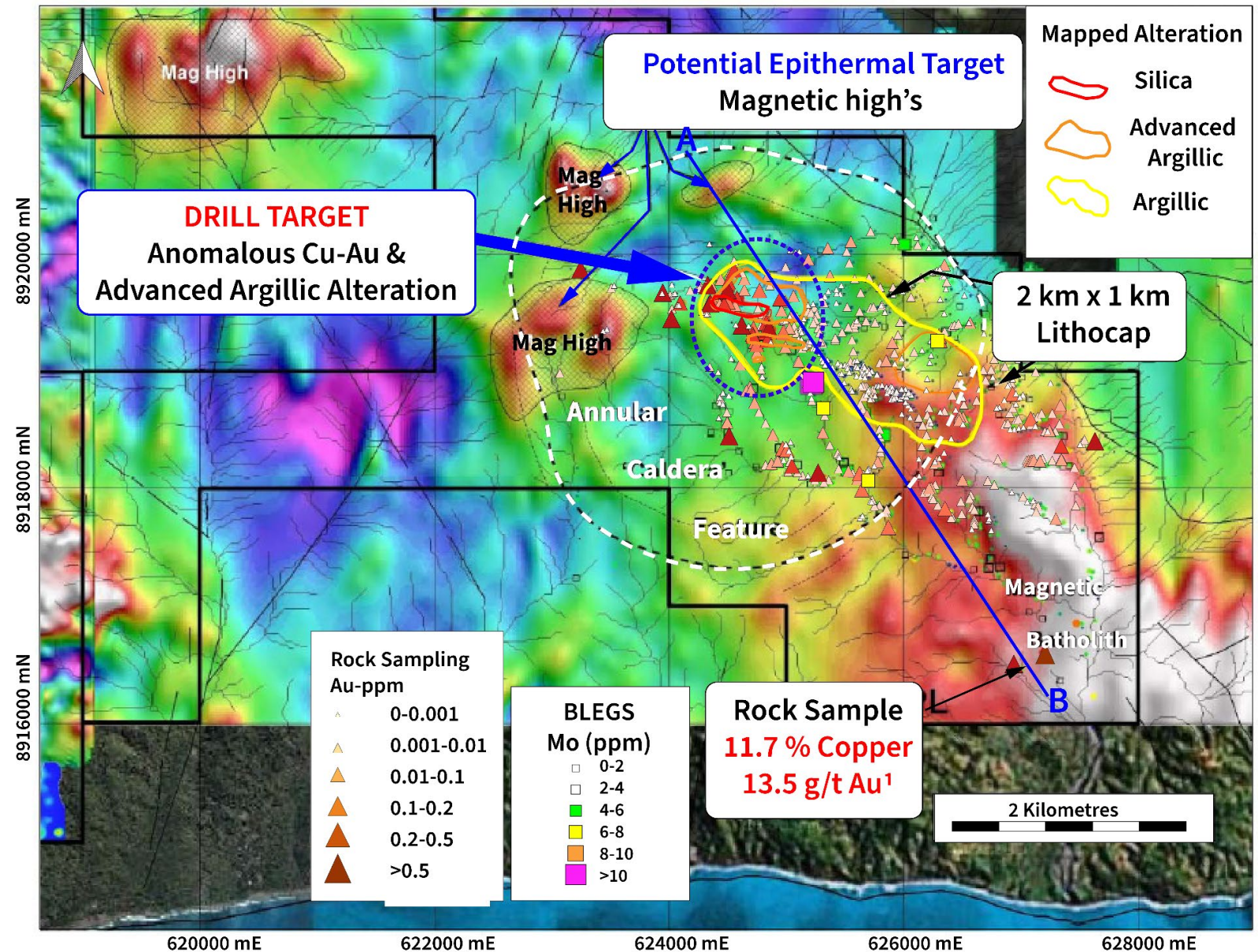
 **KUMA**



0 50 100 km N

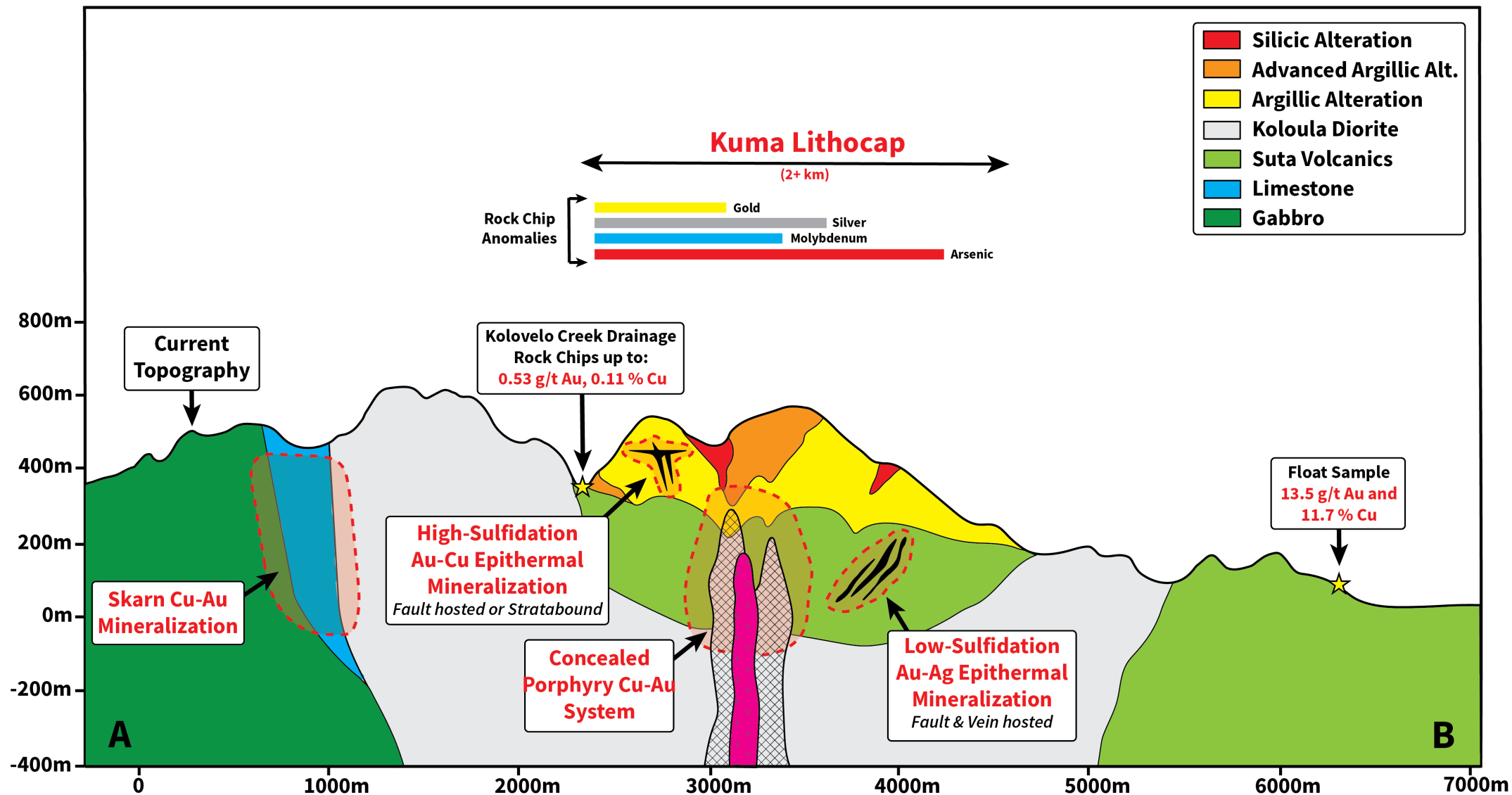
PREVIOUS EXPLORATION

KM-scale Gold Anomaly
Multiple Targets
High Grade Copper &
Gold Samples
Untested by Drilling



Gold and Molybdenum Samples Over RTP Magnetics

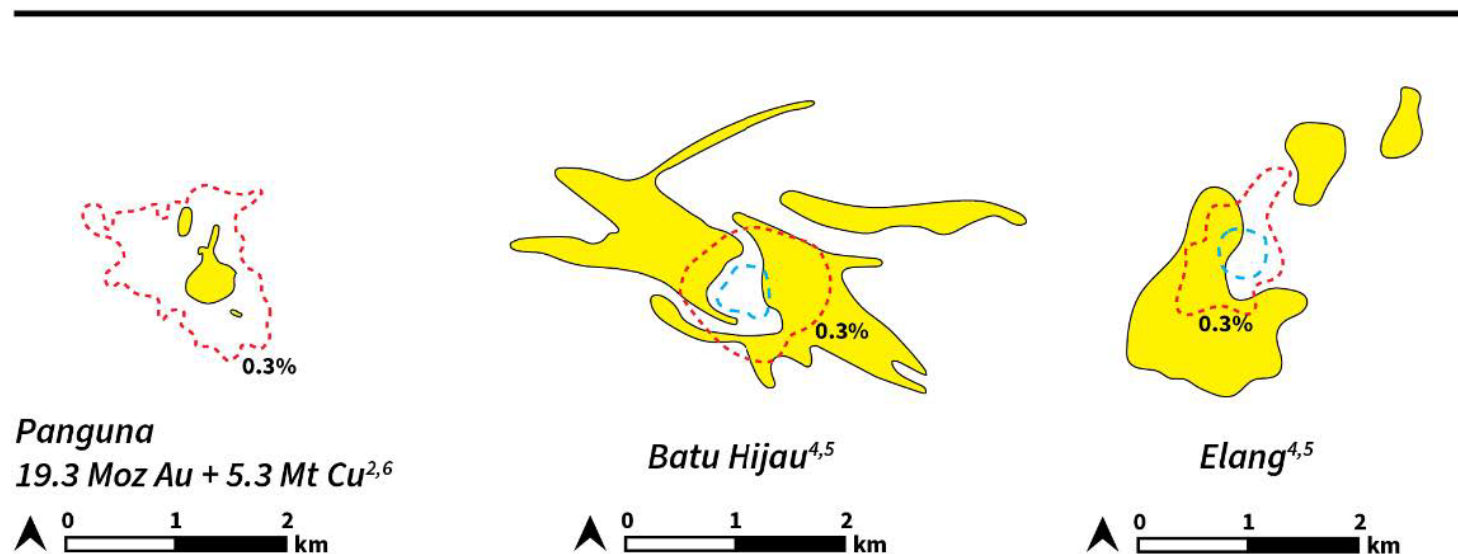
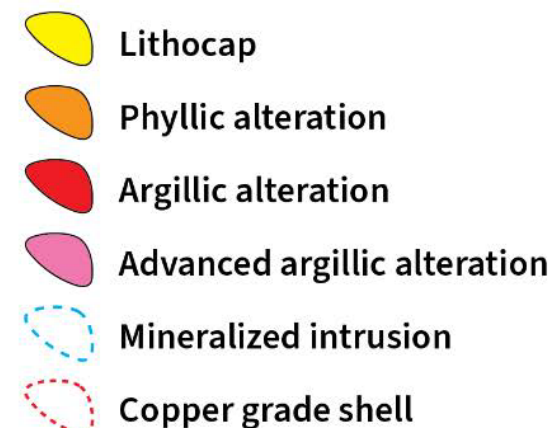
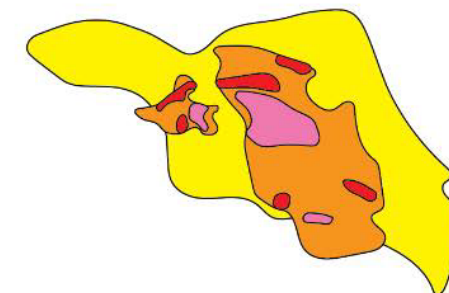
CONCEPTUAL MODEL KUMA PROPERTY



SIZE POTENTIAL

Comparison of
Lithocap Footprint
and Mineralized
Zones in Large
Porphyry Deposits
vs. Kuma

Kuma Property Lithocap



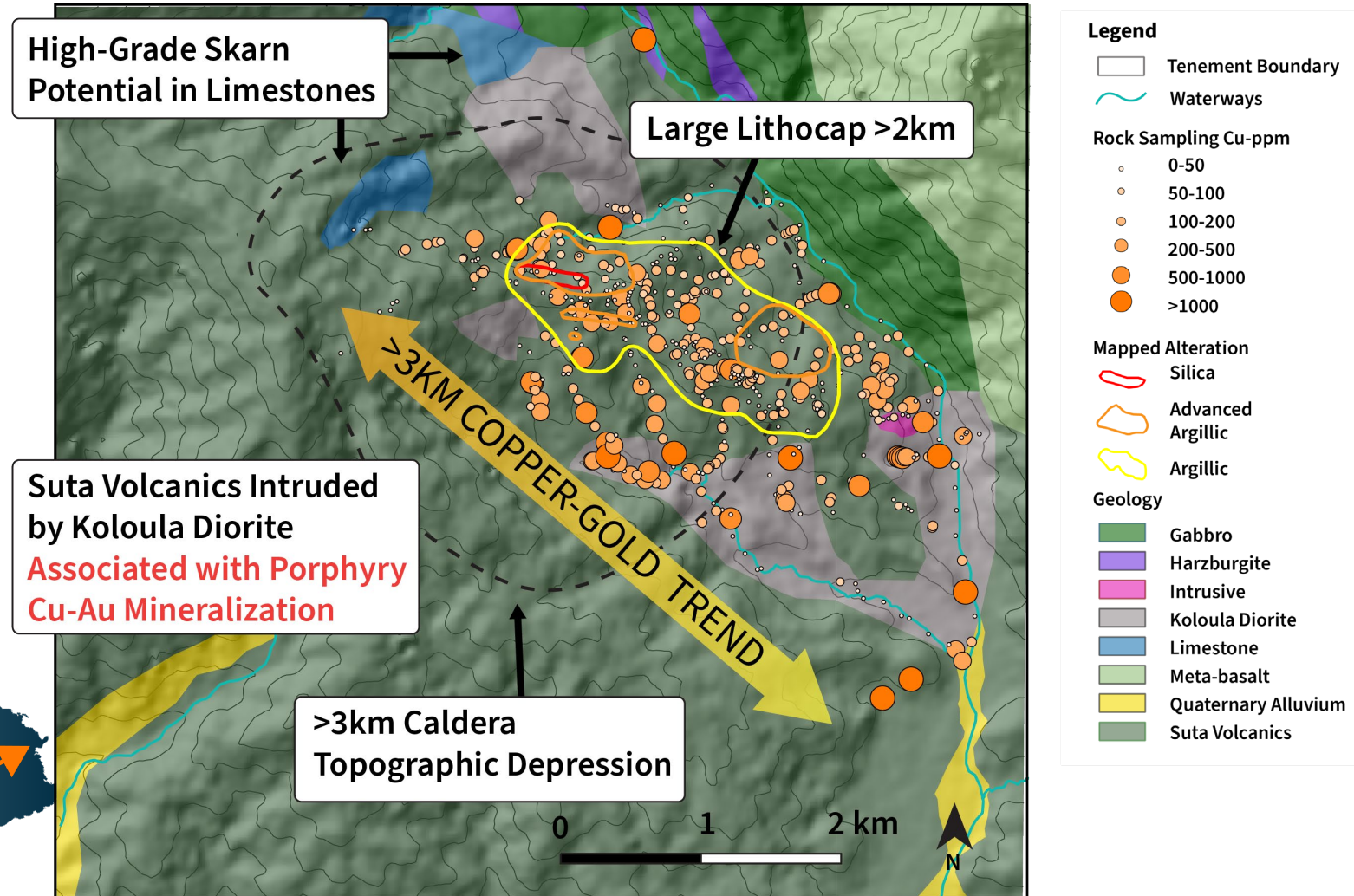
1. Newcrest Technical Report, 2020 (Lihir: 310 Mt containing 23 Moz Au at 2.3 g/t P+P, 520 Mt containing 39 Moz Au at 2.3 g/t indicated, 81 Mt containing 5 Moz Au at 1.9 g/t measured, 61 Mt containing 4.9 Moz Au at 2.3 g/t Inferred)
 2. Bougainville Copper Ltd. Annual Report, 2016 (1.5 Mt containing 16.1 Moz Au at 0.33 g/t and 4.6 Mt Cu at 0.3 % Indicated, 300 Mt containing 3.2 Moz Au 0.4 g/t and 0.7 Mt Cu Inferred)
 3. Historical grab, soil and BLEG samples from SolGold Kuma Review June 2015, and SolGold plc Annual Report 2013/2012
 4. PT Amman Mineral Internasional Tbk Annual Report, 2023 - Batu Hijau (Reserves of 759 Mt containing 6.2 Blbs Cu at 0.37 % and 7.5 Moz Au at 0.31 g/t, resources of 1,675 Mt containing 9.1 Blbs Cu at 0.25 % and 5.9 Moz Au at 0.11 g/t Au. Produced 9.7 Blbs Cu and 10

Moz Au, as of December 31, 2023) Elang (Reserves of 1,415 Mt containing 10.4 Blbs Cu at 0.33 % Cu, and 15.0 Moz Au at 0.33 g/t Au, resources of 2,282 Mt containing at 14.15 Blbs Cu at 0.28 % and 19.4 Moz Au at 0.26 g/t Au)
 5. Maryono, A., Harrison, R.L., Cooke, D.R., Rompo, I.R., Hoschke, T.G., 2018, Tectonics and geology of porphyry CuAu deposits along the eastern Sunda magmatic arc, Indonesia, Economic Geology, v. 113, pp. 7-38.
 6. Eastoe, C.J., 1979, The formation of the Panguna porphyry copper deposit, Bougainville, Papua New Guinea, unpub. PhD. thesis, University of Tasmania, Hobart (Panguna: 1.5 Mt containing 16.1 Moz Au at 0.33 g/t and 4.6 Mt Cu at 0.3 % Indicated, 300 Mt containing 3.2 Moz Au 0.4 g/t and 0.7 Mt Cu Inferred).

KUMA EXPLORATION POTENTIAL

GUADALCANAL ISLAND

Cu ppm in Rock Samples Coincident with Gold Over Mapped Geology

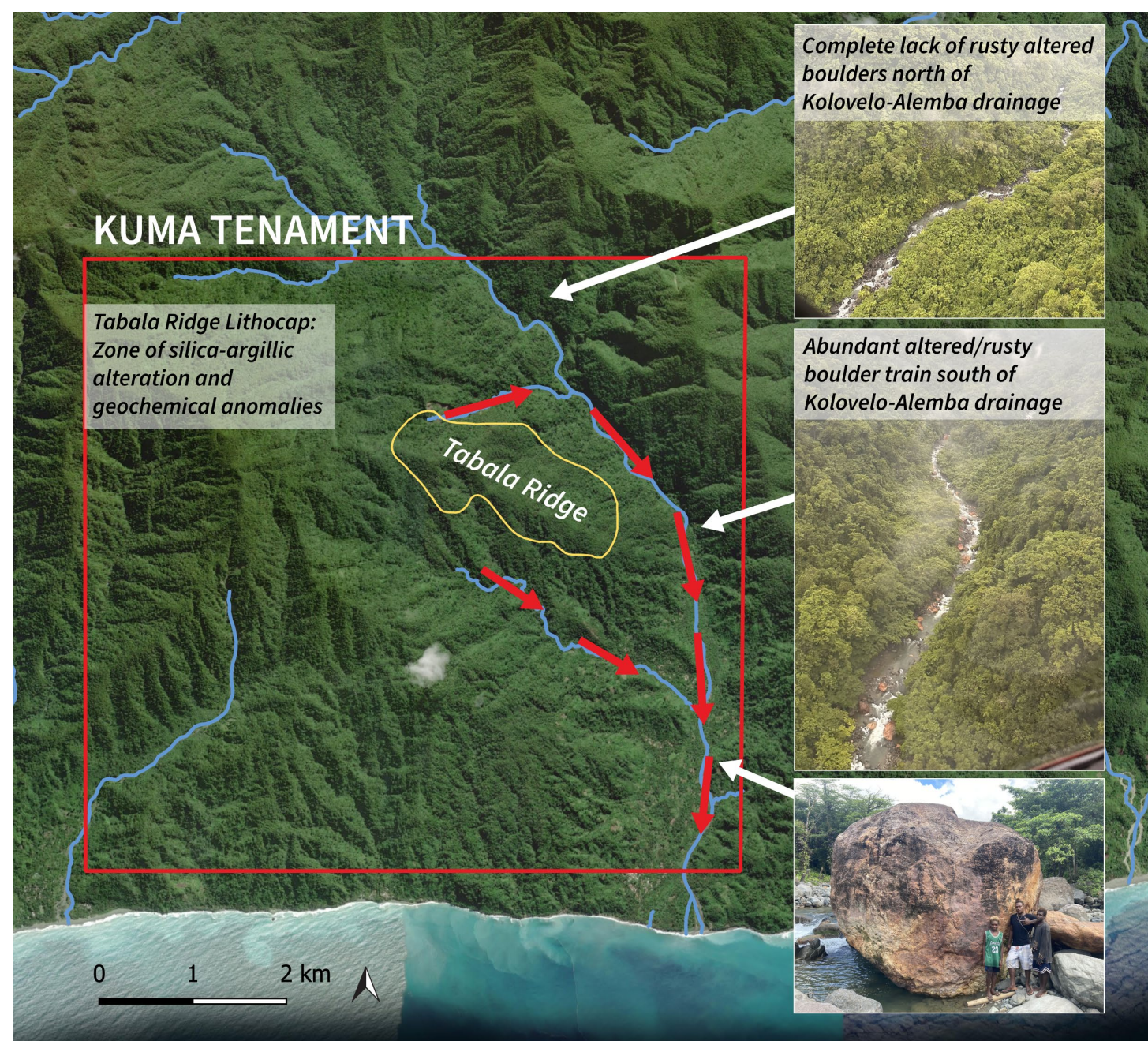


DRAINAGE & FLOAT

Kuma Property

Mineralized advanced argillic altered float in Kuma River, sourced back to the Tabala Ridge.

Evidence of a potential massive porphyry deposit on tenement, untested by drilling.



FLOAT

Float samples show a variety of textures, including breccias and porphyritic rock with quartz stockwork.

Many have strong sericite-silica-pyrite alteration.





FAURO PROPERTY

A high-potential
epithermal gold target

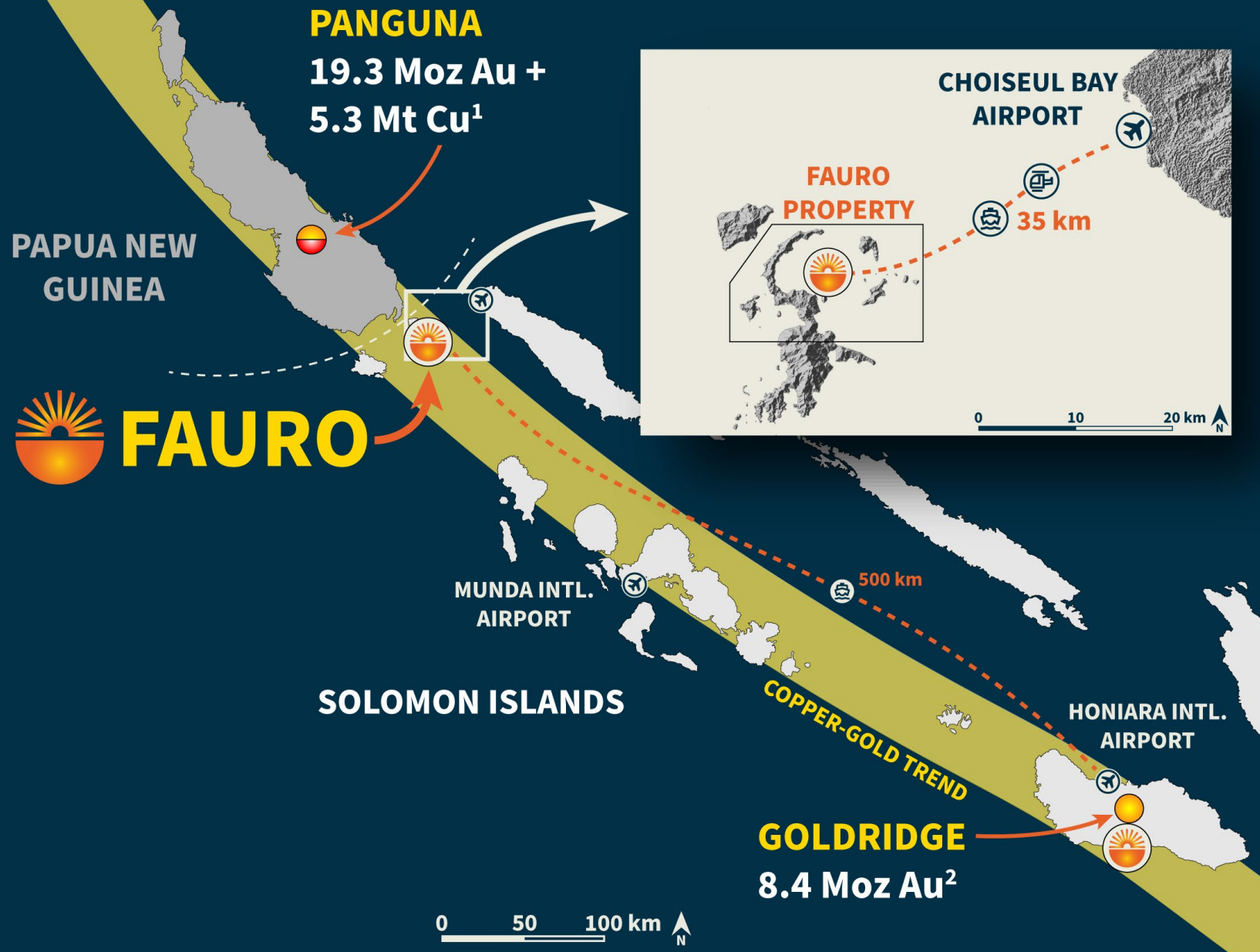
FAURO PROPERTY OVERVIEW

Property Summary

- **100% owned, over 147 km² property**
- **High-potential epithermal gold target**, with indications of a large-scale porphyry system at depth, analogous to Newmont's 71.9 Moz Lihir mine
- Seven identified prospects: **3 drill-ready targets, and 4 new exploration targets**
- Previous results include **11m at 4.03 g/t Au** and a trench sample of **8m at 27.95 g/t Au**

Location & Infrastructure

- Part of the Shortland Islands of Western Province, Solomon Islands, 500 km by boat from Honiara
- Access to the property by helicopter (15 minutes) or boat (1 hour) from Choiseul Bay
- Year-round drilling potential and excellent shipping and transport



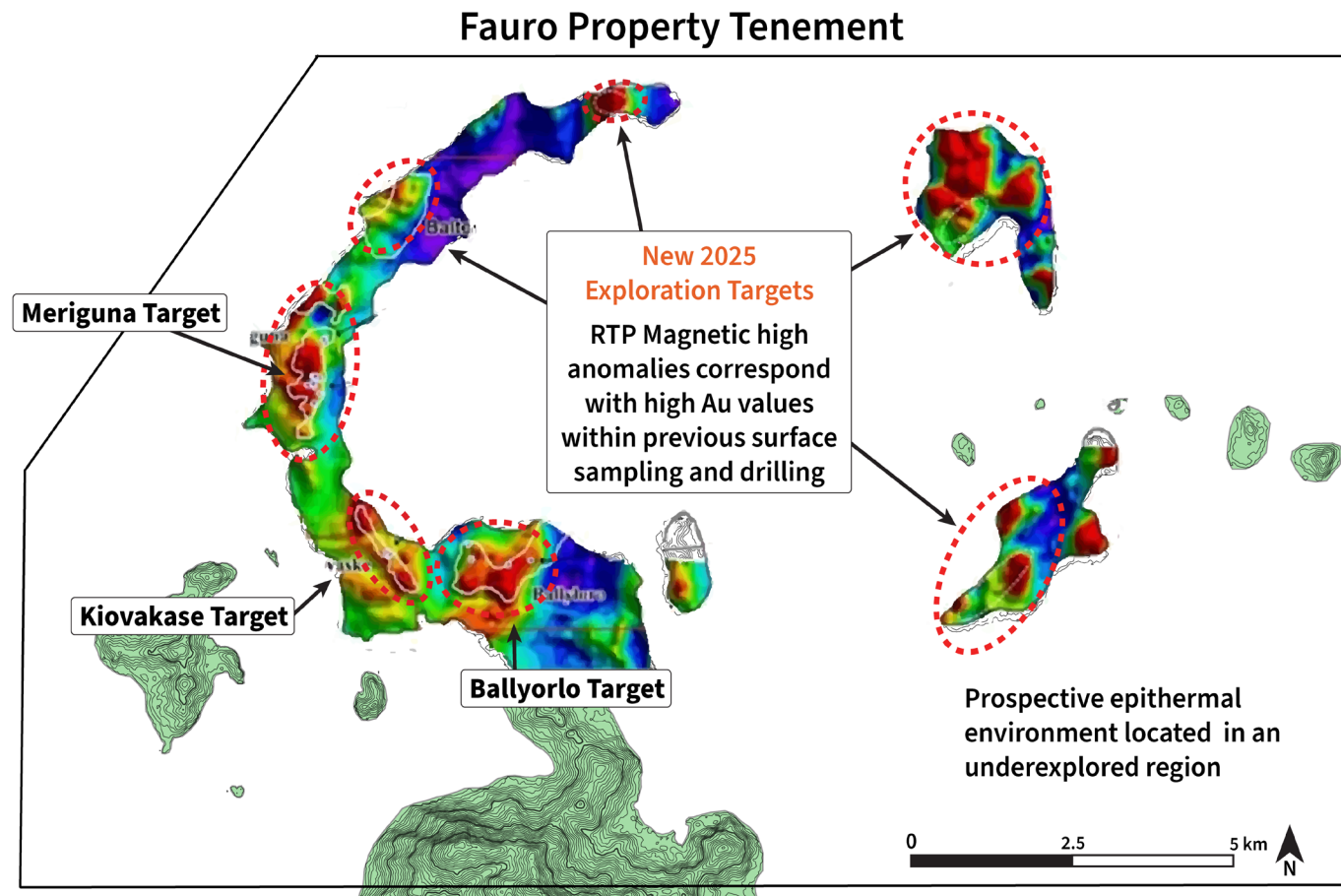
GEOLOGY & MINERALIZATION

Property Summary

- Property formed by Fauro calc-alkaline volcano collapse
- Comprised of three main lithologies: basalt, andesite, dacitic porphyry
- Evidence of major hydrothermal system by previous exploration defining 7 prospects on the property

High Grade Historical Sampling

Zone	Historical Sampling	
Meriguna	Drilling:	35m of 2.08 g/t Au 14m of 2.19 g/t Au
	Trench Sample:	8m of 27.95 g/t Au 14m of 8.94 g/t Au
	Grab Sample:	173.0 g/t Au
Ballyorlo	Drilling:	11m of 4.03 g/t Au
Kiovakase	Grab sample:	169 g/t Au
	Trench sample:	18m of 1.42 g/t Au

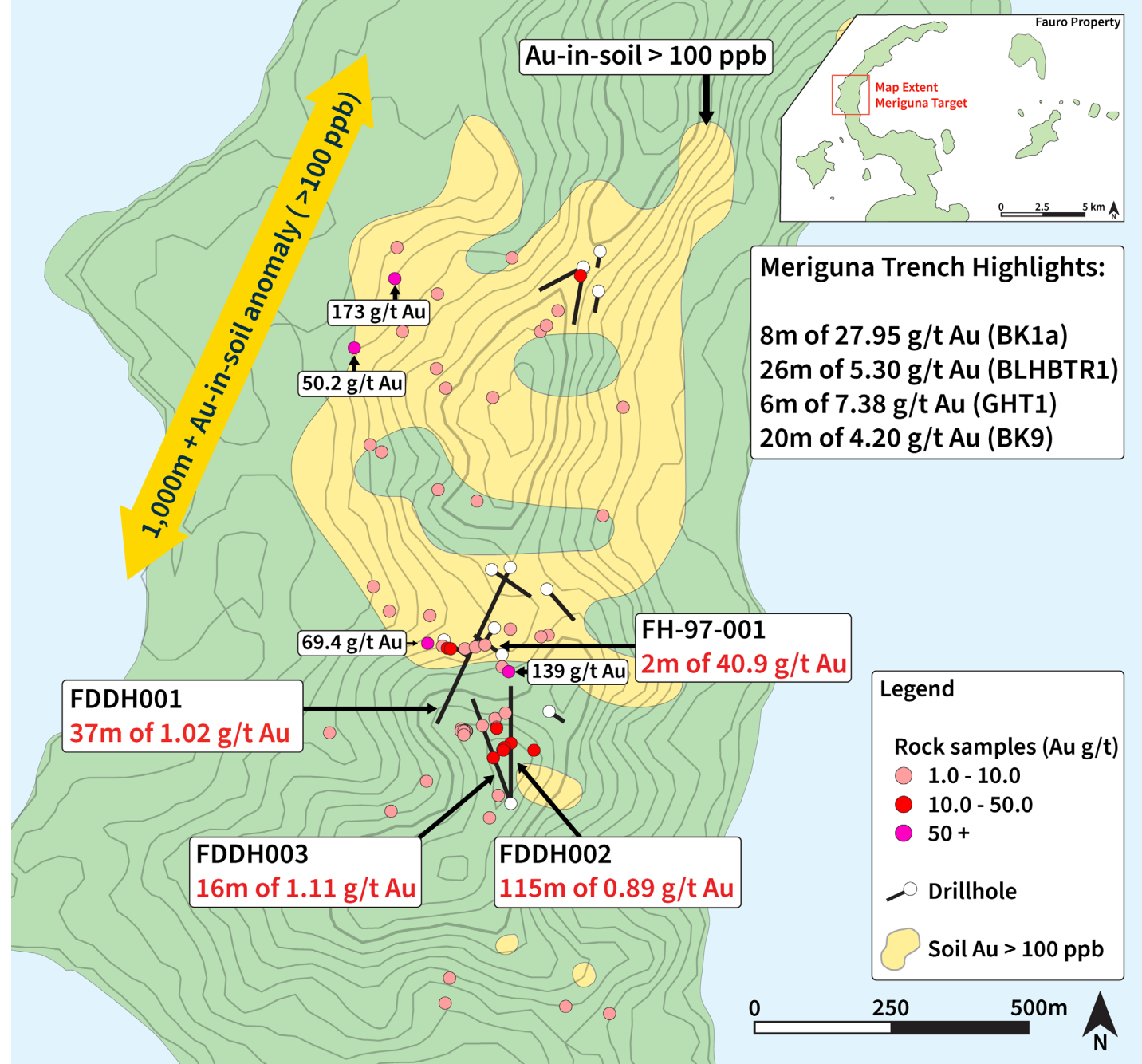


The property exhibits strong potential to host a large-scale gold deposit showing similarities in geological setting and mineralization to Lihir Gold mine.

MERIGUNA TARGET

Highlights

- Drill intercepts up to 115 metres at 0.89 g/t Au including 35 metres at 2.08 g/t Au and 1 metre at 44.45 g/t Au
- Soil anomalies >100 ppb Au cover ~100 x 500 m over a magnetic high
- Western magnetic high flanked by elevated chargeability suggests a copper-gold porphyry target yet to be drill tested



BALLYORLO & KIOVAKASE TARGETS

Highlights

- Drill intercepts up to 6m metres at 1.52 g/t Au
- Soil anomalies >500 ppm Cu cover ~500 x 300 m over a magnetic high
- The Kiovakase target contains a series of elevated Au-in-soil anomalies over an area of ~1,000 m, with numerous elevated Au rock chip samples up to 161 and 169 g/t Au

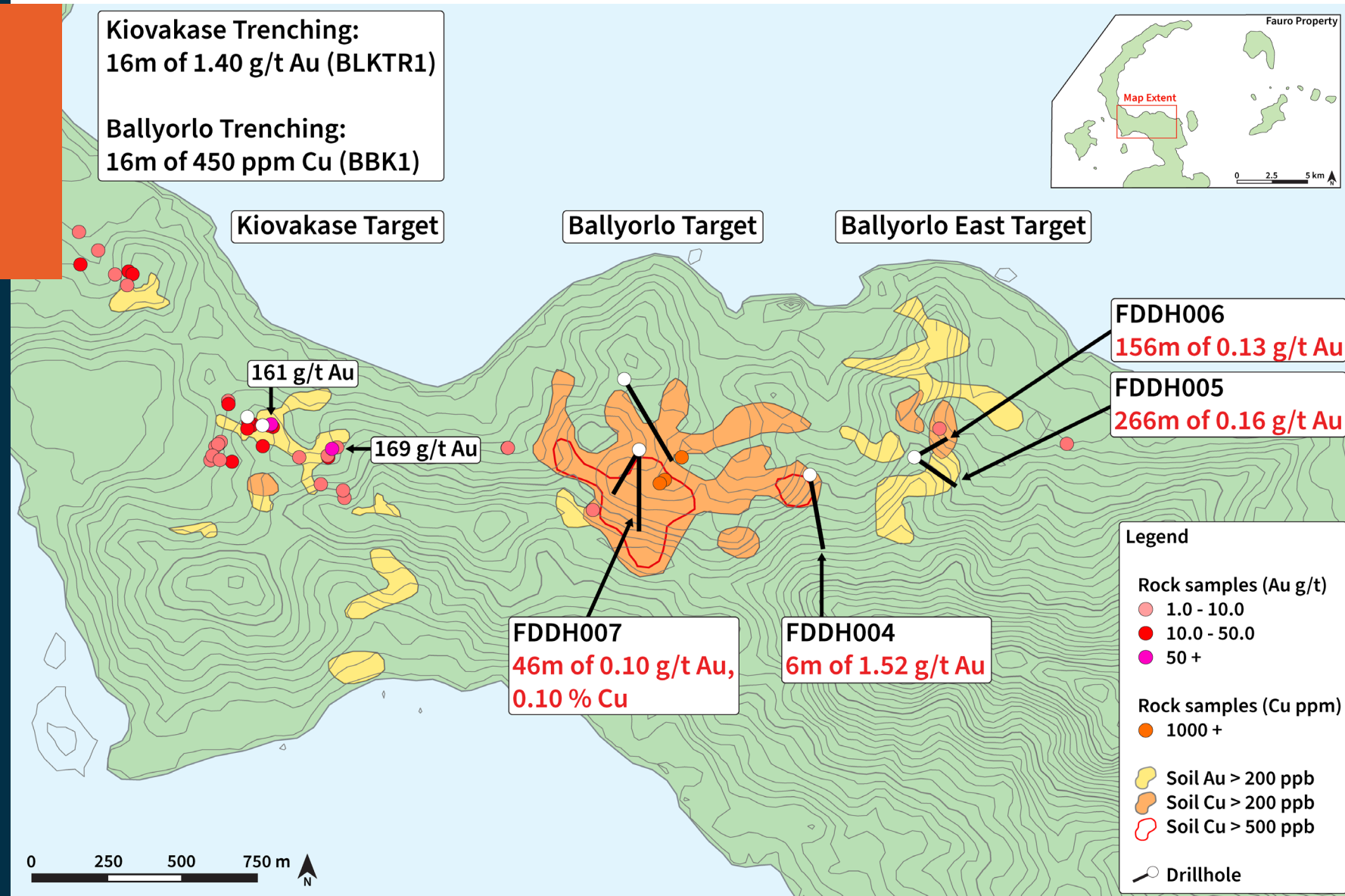


IMAGE GALLERY

2024 and 2025 Site Visits Kuma Property

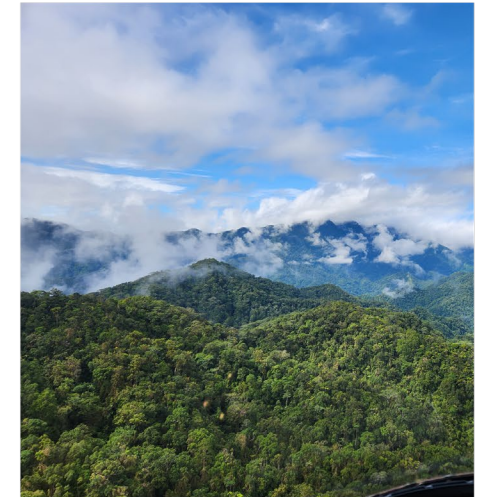
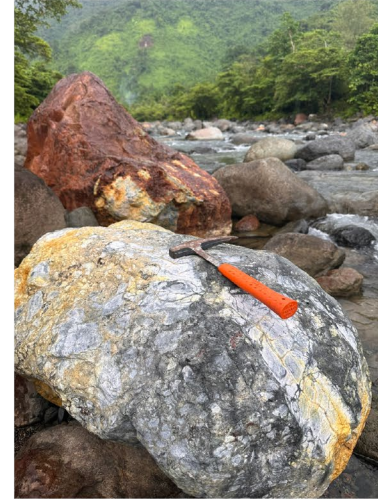
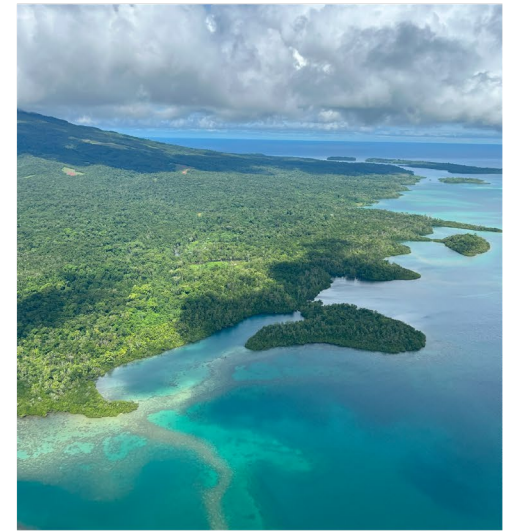
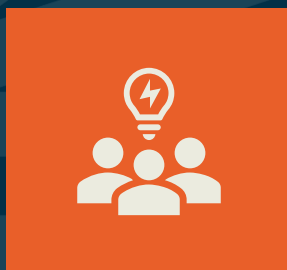


IMAGE GALLERY

2024 and 2025 Site Visits Fauro Property



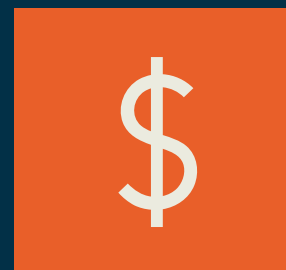
PROJECT MILESTONES & CATALYSTS



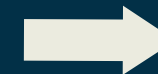
- ✓ **Formulate an idea and plan**
- ✓ **Set up management structure**



- ✓ **Land and project negotiations and agreements**
- ✓ **Finalize exploration license**



- ✓ **Raise equity**
- ✓ **Finalize project acquisition**



- ✓ **Surface sampling and airborne geophysics**
- ✓ **Drill permit**
 - Geochemistry and delineation of drill targets
 - Phase one for drilling

INVESTMENT SUMMARY

Opportunity

- New discovery potential
- Underexplored districts
- Preference to North American companies

Assets

- Potential to advance high grade Cu-Au targets, considerable risk-reward ratio
- Kuma: Grab samples up to **11.7% Cu and 13.5 g/t Au³**
- Fauro: Grab **sample 173 g/t Au³**, drill intercept **35m of 2.08 g/t Au³**

Management & Technical

- > 1 billion dollars raised
- Over 20 jurisdictions and > 10 different commodities
- Significant returns to shareholders

Exploration Potential

- Dilling: Untested (Kuma), minimal & open at Fauro
- Km-scale geophysical and geochemical anomalies on properties
- Situated within highly prospective Cu-Au trend

1. Newcrest Technical Report, 2020 (23 Moz Au P+P, 39 Moz Au indicated, 5 Moz Au Measured, 4.9 Moz Au Inferred)

2. <https://www.rtgmining.com/panguna> (16.1 Moz Au and 4.6 Mt Cu Indicated, 3.2 Moz Au and 0.7 Mt Cu Inferred)

3. Historical grab sample from SolGold Kuma Review June 2015 and SolGold plc Annual Report 2013

CONTACT

General

Sankamap.com
info@sankamap.com
CSE: SCU

Head Office

300-250 Southridge NW,
Edmonton, AB,
T6H 4M9

John Florek, CEO

johnf@sankamap.com
(807) 228-3531

Alex Horsley, IR

alexh@sankamap.com
(778) 323-3058





APPENDIX

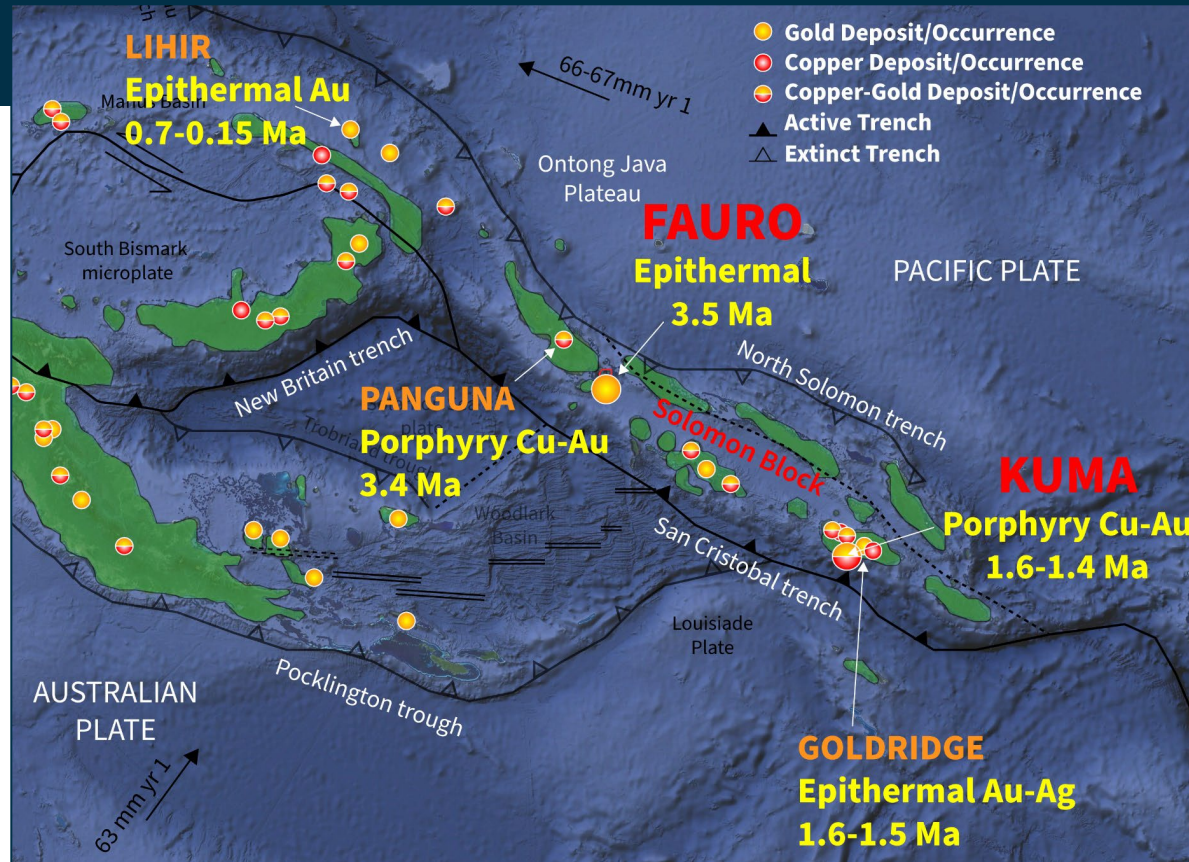
HISTORY: SIGNIFICANCE OF WW2

- During WW2, Nationals of the Solomon Islands played a key role in providing intelligence and aiding in rescue of Allied forces
- Western recognition of the contributions made by Nationals in preserving Guadalcanal and the South Pacific
- During and after WW2, Western influence led to development in Honiara (capital city), language, and preference for Western investment

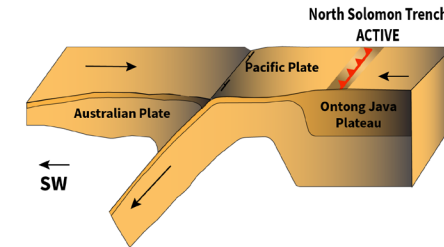


TECTONIC HISTORY

Tectonic history of epithermal and porphyry deposits in the Solomon Islands and Papua New Guinea.

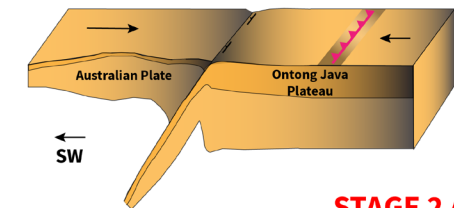


STAGE 1 ARC VOLCANISM



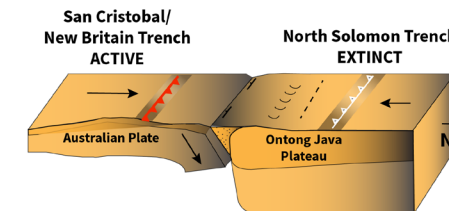
>30 Ma
North Solomon
Trench active
Subduction = SW

STAGE 2 ARC VOLCANISM



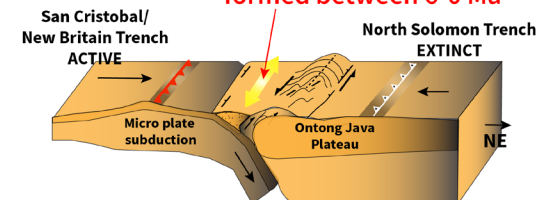
~26-20 Ma
Ontong Java
Plateau collision
terminates

STAGE 2 ARC VOLCANISM SHIFT IN SUBDUCTION



~12 Ma
Subduction flips
to NE
Formation of the
San Cristobal/New
Britain trench
begins

Majority of the epithermal and
porphyry deposits along Cu-Au trend
formed between 6-0 Ma



~6-0 Ma
Microplate tectonics
result in multiple
phases of
epithermal and
porphyry deposits