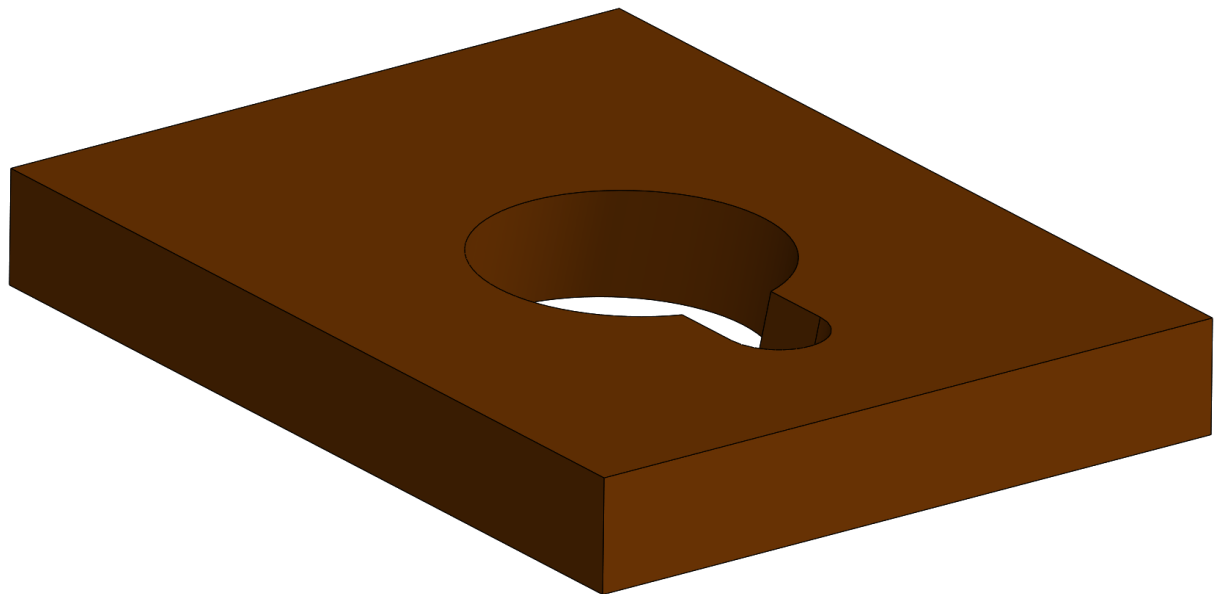
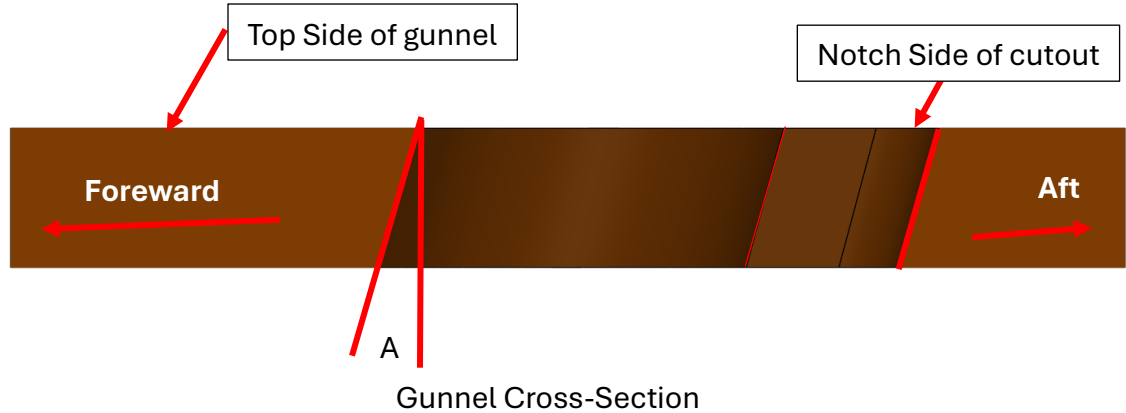


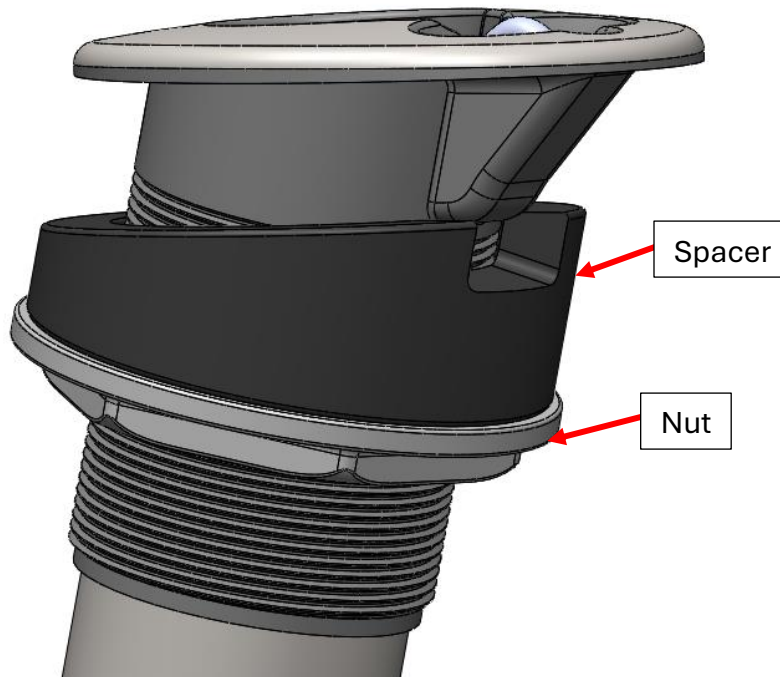
Reel Defender Owner's Manual

Installation Instructions

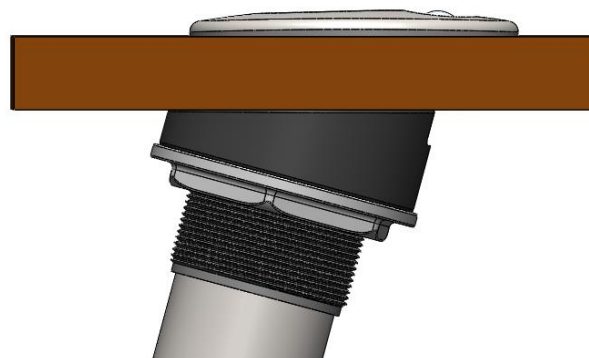
1. Prepare area for installation by cleaning any dirt and grime from the surface to be mounted to.
2. Ensure gunnel is of appropriate thickness, 5/8" thick minimum, 1-3/4" thick Maximum
3. Tape over area where rod holder will be installed with masking tape.
4. Using appropriate Reel Defender Mounting Template, cut out hole in gunnel at the same angle as the rod holder being installed (Angle A).
 - a. Angle A: 0 degree, 15 degree, or 30 Degree.
 - b. Dry fit the rod holder after completing the cutout to ensure proper fitment. Adjust hole as necessary.



5. Remove Tape and apply a bead of suitable bedding compound around the opening made in step 4 (3M 4000UV or equivalent is recommended).
6. Remove the nut and spacer from the rod holder and insert the rod holder into the cutout from the top side.



7. Apply a thin film of marine grease to the threads of the rod holder.
8. Install spacer onto rod holder from below the gunnel. The notch on spacer should be facing up and inline with the notch on the rod holder.
9. Install nut onto rod holder threads with the flange side of the nut facing the spacer.
10. Tighten nut securely using an optional Reel Defender Installation Tool or other suitable tool. Note that nut should be checked for tightness after the first use, and then checked annually.
11. Clean up any excess sealant from gunnel surface with a suitable cleaner.



Operation

1. Insert rod into rod holder, ensure gimble is making contact with the groove, or butt of the rod.
2. Press down firmly on the rod to release the brake.
3. Pull up on the lanyard.
4. Insert the hook on the rod or reel at an appropriate location.
5. While holding rod down, release the hook or lanyard and allow the slack to retract into the rod holder.
6. To remove the rod, press down firmly on the rod.
7. Pull the hook off the rod or reel to release.
8. Smoothly lower the hook and lanyard back to the rod holder while holding the rod down to ensure the brake is fully released.
9. Once the hook is resting in the rod holder, remove the rod.

Care and Maintenance

The Reel Defender system is designed for minimal maintenance; however, some care should be taken to maintain the look and operation of the system.

Every Use

1. Inspect the lanyard for excessive wear.
2. Ensure the hook is securely attached to the lanyard.
3. Rinse out the rod holder with fresh water.
4. Dry exterior surfaces.

Every Year

1. Inspect that nut is securely tightened.
2. Check that the lanyard extends and retracts completely.
3. Remove spool assembly, rinse thoroughly to remove any salt deposits. Spray with a corrosion inhibitor, and apply a thin film of marine grease to all exposed metal components.
4. Polish exterior surfaces using quality stainless polishing material. Clean up any residue.