

JULY 2024 Community Connections

MONTHLY NEWSLETTER



Let's Build Community

"Volunteers do not necessarily have the time; they just have the heart." – Elizabeth Andrew

Thank you everyone who has stepped up to cover numerous shifts during Ponoka Stampede!

We will need all hands on deck for our annual fundraising efforts at the following major events:

Big Valley Jamboree: August 1-4 AND Casinos: Date TBA

End of Summer Celebration: August 24 & 25

More details coming soon. Your efforts support programming for all ages in our communities!

Please Note:
WE ARE CLOSED
July 1, 15 and 26.



Model of Service

Did you know we are a part of a region?
As a rural model for serving locally, wrap-around services help to reduce barriers and promote personal health and community well-being. Collaborative partnerships with individuals, agencies and organizations both inside and outside the community form the pillars of this work.

Services are offered in a region comprising of Alix, Bashaw, Buffalo Lake Estates, Donalda, Dorenlee, Edberg, Ferintosh, Meeting Creek, Mirror, Pelican Point and Tees. Bashaw is a natural hub in the geographic area and the Village of Alix is the second largest center. These communities are a part of a broad vision to bring responsive and accessible programs and services to a rural population.

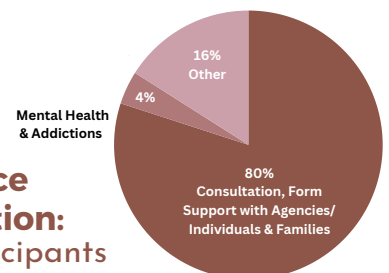
2023 Regional Statistics

Information, Supports & Referral:
16,771 Needs Addressed

Christmas Hampers/ Fill a Fridge
94 Households

Food Bank:
529 Hampers
545 Adults
287 Children
271 Seniors

Resource Navigation:
193 Participants



Home Support Outreach

- Light Housekeeping
- AND
- Yard/Garden Maintenance - light duty
- Friendly Visiting - includes home visits, social events, outdoor activities, leisure activities, etc.
- Menu Planning & Preparation
- Errands & Social Outings - includes grocery shopping, mail delivery or pick up, medication delivery or pick up, and even delivering that birthday gift to special friend.
- Support Liaison - staff are able to attend appointments with you to be an extra set of ears/ eyes so that information is understood, documented, and if necessary shared with your support people.

We look forward to creating Customized Service plans for every client, tailored to your preferences.

Available to anyone living in the Bashaw and Area region.

Cost: \$20 / hr flat rate

(Mileage is temporarily subsidized)

We are proud to be a part of local area residents Healthy Aging plan!

Services for Older Adults

If you are needing extra support at home or with your daily routines, we may be able to help. Programming for older adults now includes Meals on Wheels, Home Support-basic care and extended outreach services. Please contact us to learn arrange services.

MEALS ON WHEELS

~HOT MEALS DELIVERED
RIGHT TO YOUR DOOR!

~3-course lunch prepared at Bashaw Meadows.

Cost: \$8.00 / meal

~Meals are available on Mon, Wed & Fri.

Bashaw Bus Society Adult/ Senior Outing

July 18: Ellis Bird Farm

\$10 per person

Max 12 people, pick-up at
Bashaw CRC at 11:30AM.
Bring cash for lunch.

Call to save your spot!
780-372-3631

Ellis
Nature Centre

ADULT/SENIOR SUMMER 2024

Thursday Outings and Activities

FULL

July 11: High Tea at
DNA Gardens
Lunch provided.

July 25: Norwegian Laft Hus
in Red Deer

August 8: Coulee Tea House

August 22: Stettler Museum

Please bring cash or a bag lunch. Meals are not provided (except for outing to High Tea at D+A Gardens).

*Meet for pick-up,
10AM at Bashaw CRC.
Return in the afternoon.

OR

*Meet for pick-up,
10:30AM at Alix CRC.
Return in the afternoon.

Please
CALL to
register
for
outings!

COST:
\$10/ per
outing
for
transport



780-372-4074
4909 50 STREET



403-396-3369
BAY 1, 5008 50 AVE



BINGO Thursdays at Alix CRC 1PM-3PM

July 4, 18
August 1, 15

Drop-in for prizes, fun
and refreshments!

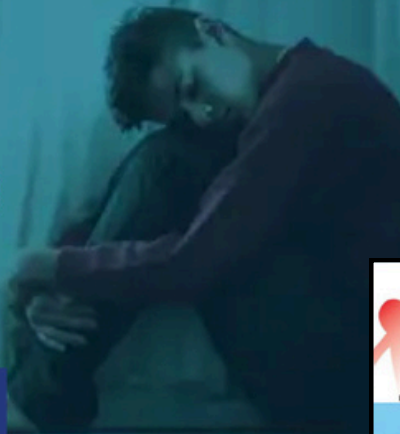
Senior Summer Wrap-up Event at Alix CRC

August 29
1PM-3PM

Drop-in for coffee, socializing and
an activity to send off summer.



Fear Less Triple P Group



Being a Parent to a child/teenager who is experiencing anxiety can be tough.

Join us virtually in a series of small group sessions once a week, where together we will discuss strategies and tools to support your child in being better able to cope with anxiety.

Thursday Evenings
Via Zoom
8:00 - 9:00
July 11 - August 08

Register via
www.camrosefrcc.com

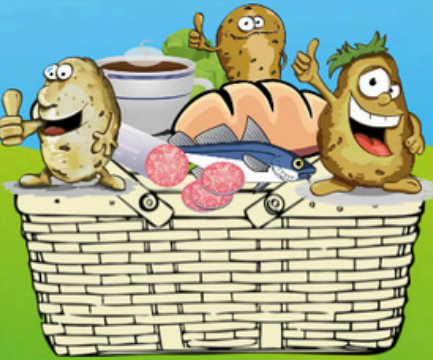


Made with PosterMyWall.com



JOIN US (YOUTH 7 - 12)
VIRTUALLY FOR CONNECTION AND AN OPPORTUNITY TO MAKE A SUMMER SNACK.
ALL MATERIALS SUPPLIED!

WEDNESDAYS
2:00 - 3:00
JULY 24, 31
AUGUST 7



SUMMER SNACKS AND STORIES



Made with PosterMyWall.com

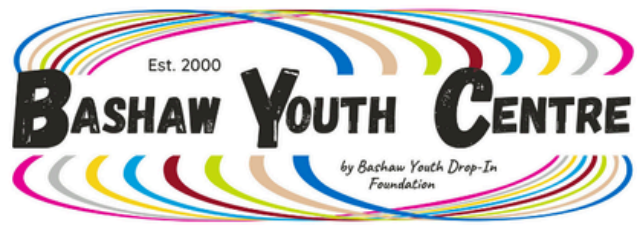
FAMILY ZONE

CREATE
CONNECT

DATE: THURS. JULY 18
TIME: 10:00-11:00 AM
PLACE: BASHAW LIBRARY (5020 52 ST.)

CAMROSE FAMILY RESOURCE CENTRE
Provincial Family Resource Network

FOR KIDS OF ALL AGES!



July 2024

| Monday | Tuesday | Wednesday | Thursday | Friday |
|--|--|--|---|--|
| 01 Closed | 02 Closed | 03 OUTING Summer Kick-Off! Deer Valley Meadows (Wall Climbing + Ziplining) *Depart 11AM, Pick Up 5PM* | 04 BASHAW CENTRE Park Fun! | 05 Closed |
| 08 Bashaw Youth Camp *Depart 9AM, Pick Up 4PM* (DROP IN: (12PM - 4PM)) | 09 Bashaw Youth Camp *Depart 9AM, Pick Up 4PM* (DROP IN: (12PM - 4PM)) | 10 Bashaw Youth Camp *Depart 9AM, Pick Up 4PM* (DROP IN: (12PM - 4PM)) | 11 Bashaw Youth Camp *Depart 9AM, Pick Up 4PM* (DROP IN: (12PM - 4PM)) | 12 Bashaw Youth Camp *Depart 9AM, Pick Up 4PM* (DROP IN: (12PM - 4PM)) |
| 15 BASHAW CENTRE Gnomes and Fairies | 16 OUTING Barney's Adventure *Depart 9AM, Pick Up 4PM* | 17 Alix Night at the Centre: Glow in the Dark Party 5PM-9AM (NO DROP IN) | 18 ALIX CENTRE Alix Museum | 19 Closed |
| 22 BASHAW CENTRE Everything Nature Day | 23 BASHAW CENTRE Art in the Park | 24 OUTING Calgary Zoo *Depart 9AM, Pick Up 5PM* | 25 BASHAW CENTRE Art in the Park | 26 Closed |
| 29 Swimming Lessons + Spray Park *Depart 9AM, Pick Up 4PM* (DROP IN: 11AM-4PM) | 30 Swimming Lessons + Alix Beach *Depart 9AM, Pick Up 4PM* (DROP IN: 11AM-4PM) | 31 Swimming Lessons + Deer Valley Meadows (Slip'n Slide) *Depart 9AM, Pick Up 4PM* (DROP IN: 11AM-4PM) | 01 Swimming Lessons + Messy Art *Depart 9AM, Pick Up 4PM* (DROP IN: 11AM-4PM) | 02 Swimming in Stettler *Depart 9AM, Pick Up 1PM* |

SUMMER FUN!

All youth attending school in the fall are welcome to join us for fun activities and adventures this summer.

NO DROP IN DURING OUTINGS. MUST PREREGISTER FOR EVENTS

CENTRE DAYS 9AM-4PM

(Some days will have special start times, see calendar. Times may differ.)

OUTING DAYS

(See calendar details for departure and pick up times.)

Please be sure to bring the following:
-Lunch + snacks
-Money for extras if needed
-Proper footwear + jacket

Daily Activity and Outing Fee:

\$50 monthly (all activities and outings included, except swimming lessons)

OR

\$10 per day (if attending less than 5 days per month)

Subject to Change (departure & arrival times may vary)

A one time waiver and registration forms are required to attend ALL summer programs. To register and attend, please fill out and return forms in advance. Forms can be requested by phone/text/ OR picked up at either Bashaw CRC or BYC offices.

See reverse for details on:
• Swimming Lessons
• Night at the Center
• August calendar

Thank you for helping make summer programs possible:

Regional Partners:

Bashaw & Area Community Resource Centre
Alix & Area Community Resource Centre



DONORS

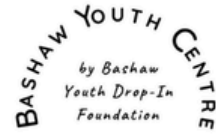
~ Ember Resources~
\$3,000

~ Bashaw & Area Recreation Board~
\$1,000

Bashaw Youth Camp

9AM until noon attend camp, then enjoy activities at Bashaw Youth Centre.

July 8 - 12



June Special Mentions...

~Community BBQ~

hosted in support of BYC

~Thank you Servus Credit Union, Bashaw Crop Services and Bashaw Groceries~

~Sizzling Summer- Online Auction~

Donors/bidders you helped raise \$2,560!

AND

~Everyone who stepped up to volunteer for golf cart shuttle at Ponoka Stampede.

Thank you!

Shout-out!

- In June we were so excited to get to check out the Bashaw RCMP Detachment and Bashaw Fire Department for First Responders Day, thank you for showing us around!
- Thank you to Gloria Knight who helped make our Birthday Day special by contributing cakes to celebrate June, July, August birthdays.



August 2024

| Monday | Tuesday | Wednesday | Thursday | Friday |
|---|---|--|---|--|
| 29 | 30 | 31 | 01 | 02 |
| 05 | 06 | 07 | 08 | 09 |
| Closed | BASHAW CENTRE Sports Camp | OUTING Sylvan Day (Wibit and Beach) *Depart 9AM, Pick Up 4PM* | OUTING Deer Valley Meadows (Zipline and Archery) *Depart 1PM, Pick Up 4PM* | BASHAW CENTRE Sports Camp |
| 12 | 13 | 14 | 15 | 16 |
| BASHAW CENTRE Art in the Park | OUTING Lakeside Go Carts + Mini Golf *Depart 9AM, Pick Up 5PM* | Alix Night at the Centre Tye-Dye Party 5PM-9AM | BASHAW CENTRE Camping Day! | Closed |
| 19 | 20 | 21 | 22 | 23 |
| Swimming Lessons + Spray Park *Depart 9AM, Pick Up 4PM* (DROP IN: 11AM-4PM) | Swimming Lessons + Alix Beach *Depart 9AM, Pick Up 4PM* (DROP IN: 11AM-4PM) | Swimming Lessons + Stettler Muesum *Depart 9AM, Pick Up 4PM* (DROP IN: 11AM-4PM) | Swimming Lessons + Messy Art *Depart 9AM, Pick Up 4PM* (DROP IN: 11AM-4PM) | Swimming Lessons in Stettler *Depart 9AM, Pick Up 1PM* |
| 26 | 27 | 28 | 29 | 30 |
| BASHAW CENTRE Everything Nature Day | BASHAW CENTRE Art Attack | BASHAW CENTRE Sports Day:Track & Field | OUTING Summer Send-Off! Deer Valley Meadows | Closed |

Night At The Center

Stay with us for a night at the center from 5PM-9AM!

Includes meals and fun activities!

July 17 - 18 at Alix

August 14 - 15 at Alix

Must bring sleeping bag, pillow, pjs, ect.

Swimming Lessons

July 29-Aug 2 or Aug 19-23

Swimming lessons for children and youth who will be Age 5, by Dec 31,2024.

@Stettler Recreation Center

Cost: \$90 per child for the week (Includes Lesson and Bussing) 9AM-4PM

Must be preregistered 2 weeks in advanced.

+ Fun activates planned for after swimming!

Subject to Change (departure & arrival times may vary)

A one time waiver and registration forms are required to attend summer programs.

info.bashawyouthcentre@gmail.com or 403-373-2706
4903 50 Ave., Bashaw, AB

@bashawyouthcentre.byc
#bashawyouthcentre



July 2024

BASHAW & AREA COMMUNITY HAPPENINGS

Community Connections

Bashaw CRC

Next Deadline: Aug 24

Contact us to have your content included in next month's newsletter.

780-372-4074,
fax 780-372-3951 or email
frontdesk.bdss@gmail.com.

Pickleball

Outdoor Courts

Tues/ Thurs/ Sat

9:30AM - 11:30AM

Contact Chris Brosinsky,
780-372-3936.

Volunteers Needed

Bashaw Health & Wellness Foundation

Jul 11, Aug 15, Sept 5 & 27, Oct 10

Volunteers needed to work at our BINGO fundraising in Wetaskiwin. Proceeds go towards helping Bashaw youth programs and different organizations. Lunch and Rides provided.

Garbage Pick-up & Recycling

July 1, 15, 29

Recycling pick-up is
Every 2nd Monday.

July 1, 8, 15, 22, 29

Garbage pick-up is
Every Monday.

Regular Council Meetings

Held on the first and third Wed of the month

Everyone is welcome.

Contact to confirm location or Zoom links,
780-372-3911.

Immaculate Heart of Mary

Catholic Church

Mass Saturday 5:30PM

1st Sunday- 9AM

Each month

Tues- Mass 5PM

Times Posted
Outside Church.

Bashaw Community Church

“A lighthouse of God’s Love and Grace.”



We want to invite you to join us for our weekly praise and worship service as we dig deeper in God’s word. We are a church where you can come and be touched by the transforming presence of God and experience his presence and goodness as we worship together.

Our service is held every Sunday at 10:00 AM
5119 50St.

Pastor Roberto Angelone
780-298-9355

July 1-Happy Canada Day, May God bless our nation!

Best wishes to all campers at Living Springs Bible Camp for a fabulous Christ centered summer.

“Christ Jesus who died—more than that, who was raised to life—is at the right hand of God and is also interceding for us.”

Romans 8:34



SUMMER READING PROGRAM



BLAST OFF INTO READING FUN AT
BASHAW LIBRARY!

JOIN THE TD SUMMER READING PROGRAM!

✈️ MISSION: REACH THE MOON, ONE BOOK AT A
TIME

🌟 WHEN: JULY 1ST - AUGUST 31ST

● WHERE: BASHAW LIBRARY

YOUNG ASTRONAUTS GET READY TO EMBARK
ON A SPACE ADVENTURE WITH THE TD
SUMMER READING PROGRAM! EVERY BOOK
YOU READ WILL HELP US TRAVEL CLOSER TO
THE MOON.

**SIGN UP AT BASHAW LIBRARY OR CALL
[7803724055] FOR MORE INFO.**

LET'S READ AND REACH FOR THE STARS!

BASHAW LIBRARY PRESENTS...

SPACE MOVIE NIGHT

WEDNESDAY, JULY 31, 2024 | 7:00 PM
@ BASHAW UNITED CHURCH

BASHAW UNITED CHURCH



whoever you are, however you are, wherever you find yourself in life, we affirm you as YOU - we are ALL loved!



We're here! Please join us at **10:30 am on Sundays**. In person is best, but you can also find us online on the Rising Spirit Ministry YouTube channel and website, and our Facebook pages. Kids always welcome, but there's no BUCK (Bashaw United Church Kids) program in July and August - an activity station is provided.

Coffee Time Thursdays at 11. Join us for coffee - or a cool drink - snacks and conversation. Everyone welcome!



BASHAW UNITED CHURCH
A Partner in Rising Spirit Ministry
780 372-3891 • Facebook
risingspiritministry.com • bashawunited@gmail.com

CAMPFIRE TALES

WE'RE BRINGING THE OUTDOORS IN FOR A WEEK OF FUN & ADVENTURE!

Imagine if parables were really campfire stories, tales about how we get along and live well. There's songs, too, and games, snacks and crafts - all with the campfire theme.

08-12 JULY
9:30-NOON

AGES 5-12

Registration Fee: \$25 for the week.
Registration deadline: July 01.
Forms available from the church, online and Bashaw & Area Community Resource Centre.
More info? Call 780 372-3891 - find us on Facebook email bashawunited@gmail.com

The Legion would like to thank all those who have supported us over the years.

Our active membership is aging, as a result the numbers have been declining over the last few years, our visibility in the community is not as strong as it once was.

To thrive we need to build up our membership. If you are 18 or older, have a few hours a month, join the Legion. We are always looking for fresh new ideas as well as volunteers. We have meetings in the evenings every third Thursday of the month, come and be a guest. You can also phone 780-372-3595, leave a name and number and we will get back to you to answer any questions you may have.

What does the Legion do?

Your Legion has a mandate to support our veterans, this includes the military, RCMP and their families. If you are in need of help contact the Legion Service Officer.

We continue to promote Remembrance, this is accomplished through the sales of poppies, school poster and literary contests, and holding Nov. 11th Remembrance Day ceremonies at our hall and we display wreaths on the fence at the graveyard. If you wish to lay a wreath at the Remembrance Day ceremony for the veterans who have given everything for our country phone and leave a name and our Poppy chair person will get back to you with more information.

Your Legion invests through financial support back into our community. We donate to youth programs such as Ball, Hockey, Curling as well as to the school breakfast program. We support our seniors through donations. We donate to our volunteer fire department, as well as to outside groups such as Stars. These are just a few of the many groups we help out.

We are a volunteer organization. We support our building through working at Casinos, holding Bingos (every wed night 7PM), holding Dart nights (Friday nights 7PM except for July & Aug.), provide hall rentals and through donations. We join in fun functions in the community such as HomeTown Days and Halloween.

Your Legion is not just a building, it is a working volunteer group, come join, bring a friend and your ideas.

Thanks, Bob Dart
Bashaw Legion

JUL 2024

OPEN Monday to Friday, 9AM-4PM.

Closed all statutory holidays.



4909 50 Street, Bashaw, AB

Bashaw Adult Learning
 Bashaw & District Food Bank
 Bashaw & District Support Services (B.D.S.S.)
 Bashaw Bus Society
 Bashaw Community Wellness Team

Ph. 780-372-4074
 Fx. 780-372-3951

| S | M | T | W | T | F | S |
|------------------------------|---------------|---|----|---|---------------|----|
| 30 | 1 | 2 | 3 | 4 | 5 | 6 |
| | CLOSED | Bashaw Bus 9AM <i>Community Coffee Drop-in, 1:30PM-3PM @ Lutheran Church</i> | | Foot Care by Kaitlin Clinic, by Appointment | | |
| 7 | 8 | 9 | 10 | 11 | 12 | 13 |
| | | Bashaw Bus 9AM <i>Community Coffee Drop-in, 1:30PM-3PM @ Lutheran Church</i> | | Camrose Bus 9AM • Regional Outing: High Tea DNA Gardens, (FULL) leave at 10AM | | |
| 14 | 15 | 16 | 17 | 18 | 19 | 20 |
| | CLOSED | Bashaw Bus 9AM <i>Community Coffee Drop-in, 1:30PM-3PM @ Lutheran Church</i> | | Bashaw Bus Society: Adult/Senior Trip to Ellis Bird Farm, pick-up 11:30AM @ Bashaw CRC Foot Care by Kaitlin Clinic, by Appointment | | |
| 21 | 22 | 23 | 24 | 25 | 26 | 27 |
| • August Newsletter Deadline | | Bashaw Bus 9AM <i>Community Coffee Drop-in, 1:30PM-3PM @ Lutheran Church</i> | | Camrose Bus 9AM • Regional Outing: Norwegian Laft Hus, leave at 10AM | CLOSED | |
| 28 | 29 | 30 | 31 | 1 | 2 | 3 |
| | | Bashaw Bus 9AM <i>Community Coffee Drop-in, 1:30PM-3PM @ Lutheran Church</i> | | | | |

BASHAW BUS SOCIETY

.....

Bashaw Bus - \$6
 Camrose Bus - \$15
 Charter Bus - \$30/hour + \$1/km

.....

Call 780-372-3631 to book your spot.

We offer info & referral, resource navigation, one-on-one support and programs for all ages. Visit online for a complete list of services and program details, www.bashawcrc.com.

- ~Access food hampers Monday to Friday, 9AM-4PM
- ~Virtual AHS Mental Health Appointments: Book on Monday through Friday, at 10AM-12PM & 1PM-2PM. Call to make an appointment.

..... *Subject To Change*

Partner Programs:

- ~For more info on the Community Coffee Drop-in at the Bashaw Lutheran Church (BLC), contact Leanne Walton, 403-505-3436 or 403-784-3437.
- ~For more info on Bashaw Youth Center (BYC) programs contact, 403-373-2706. Located at 4903 50 Ave.
- ~To book with Foot Care by Kaitlin or for more info please contact, 587-377-6099.

PROGRAM UPDATE

Bashaw Regional Transportation



A door to door service, designated to support Healthy Aging in the Bashaw region.

Who Can Ride:

- Age 50+
- Live within the areas of Bashaw, Donalds, Alix, Mirror, Mecca Glen, Ferintosh, Edberg, Meeting Creek and everywhere in between
- Folks who need transportation services to medical and other health related appointments
- Folks that do not drive, or do not drive in the cities where their appointments may be
- Folks who are attending short-term appointments
- Priority for those who do not have other supports, family members or means of transportation available

June 1, 2024

Changes Effective

Federal funding has ended, which has prompted necessary changes to continue this pilot program.

Updated Set Round Trip Fees:

- 0-150 km: \$30
(up to 3 hour Driver time allocation)
- 151-250 km: \$60
(up to 5 hour Driver time allocation)
- 251-350 km: \$80
(up to 7 hour Driver time allocation)
- 351-450 km: \$100
- In Bashaw, \$10 flat rate

How Does it Work?

Healthy Aging Alberta and B.D.S.S. will continue to subsidize "set" Driver time allocation costs.

Any additional driver hours beyond allocated time are the responsibility of the rider at a cost of \$20/hour.

Each service request is evaluated on a case-by-case basis.
*Riders must meet screening requirements prior to approval of services.

Please contact us with inquiries or to book your ride!

frontdesk.bdss@gmail.com

(780) 372-4074

TOWN OF BASHAW DIRECTORY

| | | | |
|--|---|-------------------------|---|
| ATB Financial Bashaw | (780) 372-3030 | 4909 50 St. | Bank, Chequing and Savings Accounts, Credit Accounts, Investments and Loans. |
| B.P.O.E. - Elks | bashawelks175@gmail.com | | Service Club. |
| Bashaw & Area Community Resource Centre | (780) 372-4074 | 4909 50 St. | Community Wellness Services Comprise of Information & Referral, Resource Navigation and One-on-One Support. Supports and Resources for all Ages, Activities and Events, Food Hampers, Seasonal Programs, Transportation, Volunteer Services and More. |
| Bashaw & District Agricultural Grounds | (780) 781-6451 | 4750 45 Ave. | Rental Facility. |
| Bashaw & District Chamber of Commerce | (780) 678-9000 | | Member's Volunteer Efforts Promote Community and Local Businesses. |
| Bashaw & District Food Bank | (780) 372-4074 | 4909 50 St. | Food Hampers. Proud partner of Bashaw & Area Community Resource Centre. |
| Bashaw & District Preschool | (780) 372-2053 | 5020 52 Ave. | Play-Based Preschool Program. Proud partner of Bashaw & Area Community Resource Centre. |
| Bashaw & District Regional Health and Wellness Foundation | (780) 372-3087 | | Health and Wellness Organization. |
| Bashaw & District Support Services | (780) 372-4074 | 4909 50 St. | Community Based, Preventative Social Programs & Services. Proud partner of Bashaw & Area Community Resource Centre. |
| Bashaw & District Thrift Store Society | (780) 372-3718 | 5008 50 St. | Used Clothes, Movies, Games and Small Furniture. |
| Bashaw 4-H Beef Club | (780) 678-6341 | | Youth Organization. Beef. |
| Bashaw 4-H Multi Club | (780) 678-6963 | | Youth Organization. Horse, Woodworking, Sewing, Dog, Photography and Foods. |
| Bashaw Adult Learning Council | (780) 372-3648 | 4909 50 St. | Adult Education. Proud partner of Bashaw & Area Community Resource Centre. |
| Bashaw Ag Society | (780) 781-6451 | 4750 45 Ave. | Bookings, Cattle Barns, Outdoor/Indoor Show Rings, Race Track and Rodeo Facilities. |
| Bashaw Arena | (780) 372-3763 | 5020 52 St. | Rental Facility. |
| Bashaw Art Club | (780) 372-4341 or (780) 372-3562 | | Fine Art, Courses, Art Shows and Displays. |
| Bashaw Autobody | (780) 372-0132 | 4920 49 St. | Custom, Collision and Restoration. |
| Bashaw Bottle Depot | (780) 372-2282 | 4720 49 Ave. | Bottle Return. |
| Bashaw Bus Society | Board (780) 372-2211 or Rental (780) 372-3631 | 4909 50 St. | Wheelchair Accessible Transportation. Proud partner of Bashaw & Area Community Resource Centre. |
| Bashaw Canada Post | (780) 372-3033 | 5118 50 St. | Sending and Receiving Mail, Gift Cards. |
| Bashaw Cemetery | (780) 372-3911 | NW 28-41-21-W4 | Cemetery. |
| Bashaw Community Centre Board | (780) 372-2441 | 5020 52 St. | Contact for Hall Bookings. |
| Bashaw Community Church | (780) 298-9355 | 5119 50 St. | Worship Services. |
| Bashaw Community Hall | (780) 372-4487 | 5020 52 St. | Wheelchair Accessible Facility, Banquet Capacity- 250 People. |
| Bashaw Community Health Centre | (780) 372-3731 | 5308 53 St. | Home Care, Lab and X-Ray. |
| Bashaw Community Theatre | (780) 372-3648 | | Arts & Entertainment, Theatre Productions. |
| Bashaw Concrete Products Ltd. | (780) 372-3854 | 5102 48 St. | Landscaping Supplies including Topsoil, Mulch, Red Shale, Fire Pits & Landscape Fabric, Ready Mix Cement, Gravel, Sand, Limestone and Compost. |
| Bashaw Crop Services | (780) 372-3036 | 5115 48 St. | Farm Crop Services and Fertilizer. |
| Bashaw Curling Club | (780) 372-3817 | 5019 50 St. | Sports Club and Arena & Sports Venue. |
| Bashaw Disaster Services | (780) 372-3911 | 5011 52 Ave. | Disaster Services. |
| Bashaw Esso | (780) 372-4106 | HWY 21 & HWY 53, 53 St. | Gas, Diesel, General Car Maintenance Supplies, Air Compressor Available for Car Tires and Car Wash. |
| Bashaw Farm and Building Supplies Ltd. | (780) 372-4104 | 4603 45 Ave. | Hand Tools, Power Tools, Fasteners, Hardware, Paint, Electrical, Plumbing, Heating & Cooling, Housewares, Lawn & Garden, Pet Supplies, Farm Supplies, Automotive, Outdoor Living and Outdoor Sports. Purolator Pickup Location. |
| Bashaw Farmers Market | (780) 781-0998 | 5020 52 Ave. | Seasonal Outdoor Market. |
| Bashaw Fire Department | Fire Chief (780) 350-9140 | | Fire Protection Service. |
| Bashaw Fire Hall Museum | | 5018 50 St. | Artifacts and Local History. |
| Bashaw Food Town | (780) 372-0000 | 5011 50 St. | Grocery Store, Food and General House Supplies. |

| | | | |
|--|---|--------------------------------|--|
| Bashaw Funeral Home | (780) 372-2353 | 5016 50 Ave. | Caskets, Urns and Funeral Planning. |
| Bashaw Golf and Country Club | (780) 372-2333 | | Golf and Country Club. |
| Bashaw Groceries | (780) 372-3535 | 5019 50 St. | Grocery Store, Food and General House Supplies. |
| Bashaw Home Hardware | (780) 372-3889 | 5102 50 St. | Hand Tools, Power Tools, Fasteners, Hardware, Paint, Electrical, Plumbing, Heating & Cooling, Housewares, Lawn & Garden, Pet Supplies, Farm Supplies, Automotive, Outdoor Living and Outdoor Sports. |
| Bashaw Hotel | Bar (587) 322-9335 or Restaurant (587) 322-9555 | 5016 50 St. | Hotel Rooms, Restaurant and Bar. |
| Bashaw Laundromat | | 4905 50 St. | Washing Machines and Clothing Dryers. |
| Bashaw Legion Hall | (780) 372-3595 | 5115 50 St. | Rental Facility. Leave a message for bookings. |
| Bashaw Library Board | (780) 372-4055 | 5112 52 St. | Governing Board for Bashaw Municipal Library. |
| Bashaw Liquor Store | (780) 372-3860 | 4520 50 St. | Beer, Wine and Spirits. |
| Bashaw Meadows | (780) 372-2056 | 5502 56 Ave. | Both Lodge and Designated Supportive Living Accommodation. |
| Bashaw Meats and Sausage | (780) 372-3517 | 4903 51 Ave. | Beef Products, Pork Products, Chicken Products, Fish & Shellfish, Ice Cream in the Summer, Rice and Soup. |
| Bashaw Medical Clinic | (780) 372-3740 | 5308 53 St. | Medical Services. |
| Bashaw Municipal Campground | (780) 372-3911 | Next to Bashaw Ag Grounds | Camping- 16 Un-Serviced Sites, Self Registration, \$20 Per Night, Trailer Dump Station and Washrooms. |
| Bashaw Municipal Library | (780) 372-4055 | 5112 52 St. | Parkland Regional Library Member. |
| Bashaw Pharmasave | (780) 372-3503 | 5010 50 St. | Various Pharmas, Prescription Drug Pickup and Vaccines. |
| Bashaw R.C.M.P. Detachment | (780) 372-3793 | 5017 52 St. | Police Services. |
| Bashaw R.C.M.P. Victim Services | (780) 372-3687 | 5017 52 St. | Crisis Support. |
| Bashaw Recreation Board | (403) 741-2630 | | Recreation, Arts and Culture. |
| Bashaw School | (780) 372-3800 | 5112 52 Ave. | K-12, Battle River School Division. |
| Bashaw Seed Cleaning Association Ltd. | (780) 372-3868 | 5111 48 St. | Feed Pellets, Seed Cleaning, Separation and Sorting. |
| Bashaw Skating Club | (403) 741-5026 | | Sports Club. |
| Bashaw Sports Centre | (780) 372-4440 | 5012 50 St. | Guns, Ammo, Hunting & Fishing Supplies, Competition Shooting and Archery Supplies. |
| Bashaw Star | (403) 742-2395 | | Local Newspaper and Advertising. |
| Bashaw Thrift Shop | (780) 372-3718 | 5008 50 St. | Second Hand Goods. |
| Bashaw Tourism Information Booth | | 5020 52 Ave. | Maps and Information. |
| Bashaw Tool & Small Equipment Rentals | (403) 588-9958 | 5036 49 Ave. | Tool Rental. |
| Bashaw UFA Petroleum Agency & Cardlock | (780) 372-3865 | 4510 50 St. | Gas, Diesel, General Car Maintenance Supplies and Propane. |
| Bashaw United Church | (780) 372-3891 | 5036 52 Ave. | Worship Services. |
| Bashaw Veterinary Clinic | (780) 372-2411 | 5113 50 St. | Veterinary Care for Pets and Farm Animals, General Pet and Farm Supplies. |
| Bashaw Western Financial Group | (780) 372-3584 | 4907 50 St. | Different Types of Insurance, Class 7 GDL and Class 5 GDL License Tests and Renewals of Vehicle Registration. |
| Bashaw Youth Centre | (403) 373-2706 | 4903 50 Ave. | Youth Recreation. |
| Carlson Construction | (780) 372-2374 | | Construction. |
| CC Welding & Tire | (780) 372-4026 | 42067 RR 204 | Tire Sales & Repair and Welding. |
| Central AB Builders & Renovators | (403) 588-9957 | 5036 49 Ave. | Renovations and Construction. |
| Cheryl J. Moser Chartered Professional Accountant | (780) 679-8960 | | Farm, Small Business, Corporate and Personal Accounting and Tax Services. |
| Cindy's She Shed | (780) 372-4104 | 4603 45 Ave. | Greenhouse. Opening May 3rd for the 2024 season. Open Mon-Fri 9AM-5PM, Sat 9AM-3PM, Sun 11AM-2PM. |
| Cliff's Water Well Drilling | (403) 302-2102 | | Water Well Services. |
| Country Lane Saskatoons (formerly Oberg Saskatoon Farm) | 403-350-5351 | 6 KM South of Bashaw on Hwy 21 | Berry Picking. |
| Country Nine Golf Course | (780) 372-2427 | Range Rd 213A | Golf Course. |
| East Hills Automotive & Tool Supply | (403) 357-7401 | 4516 50 St. | Automotive Parts Store. |
| Fankhanel Construction Ltd. | (780) 679-8403 | | Shops, Barns, Garages, Roofing, Cement Work, Home Renos, Sheds and More. |
| Fresh Start Studio | www.freshstartstudio.ca | 7KM East of Bashaw on HWY 53 | Handmade Studio and Shop. |
| Friends of the Majestic Theatre | (780) 372-4341 or (780) 372-4163 | 5110 50 St. | Performing Arts and Dinner Theatre. |

| | | | |
|--|----------------------------------|---|---|
| Generations Daycare | (780) 372-2053 | 5020 52 Ave. | Child Care. Proud partner of Bashaw & Area Community Resource Centre. |
| Hairz Amour | (780) 372-4043 | 4920 50 St. | Hair Styling, Manicures, Pedicures, Facials, Waxing and Piercing. |
| Hammer's Construction Ltd. | (780) 385-1886 | 5327 52 Ave. | Certified Carpenter Specializing In All Types of Concrete Work. |
| Happy Gang Centre (Bashaw & Area Seniors Activity Centre) | (780) 372-3801 | 5001 50 St. | Seniors Centre. |
| Heritage House 1 & 2 | (780) 679-2000 | 5015 53 Ave. | Seniors Subsidized Housing, Independent Living Only. |
| Holt's Vacuum & Septic Service | (780) 372-3522 | 5009 50 St. | Septic Services. |
| I Knead You | (780) 781-7776 | 4914 50 St. | Massage Therapist. |
| Immaculate Heart of Mary Roman Catholic Church | (403) 742-2047 | 4919 51 St. | Worship Services. |
| J.S. Carpenters Services Corp. | (403) 304-1477 | | Fence/Deck/Garage/Roofing, Residential & Commercial New Construction and Renovations. |
| Jim's Consignment | (780) 372-3843 | 5011 50 St. | Consignment and Second Hand Goods. |
| John's Gym | (780) 608-9274 | 4819 50 St. | Workout and Exercise Gym. |
| Jones Family Chiropractic Centre | 1-866-920-0707 | 5020 50 St. | Chiropractic Care. |
| KIJO Welding Ltd. | (780) 781-1607 or (780) 781-4463 | | Welding. |
| Lakeside House | (780) 679-2000 | 4902 54 Ave. | Seniors Subsidized Housing, Independent Living Only. |
| Lee Industrial | (780) 878-4253 | | Screened & Washed Sand & Gravel, Site Prep. and Trucking. |
| Liquor Town | (780) 372-0000 | 5009 50 St. | Beer, Wine and Spirits. |
| M & A Butcher | (780) 898-5919 | | Butcher Shop. |
| Majek Well Services | (780) 372-2447 | | Water Well Services. |
| Max's Drive Inn Restaurant | (780) 372-3771 | 4415 55 St. | Restaurant and Pizza. |
| Meeting Place Coffee Roasters | (780) 678-1961 | 4813 50 St. | Restaurant and Coffee Shop. |
| Minor Ball | (403) 741-8502 | | Sports Club. |
| Minor Hockey | (780) 679-8983 | | Sports Club. |
| N.J. Holt & Sons Ltd. | (780) 372-3522 | | Trucking. |
| OK Tire | (780) 372-2045 | 4920 50 Ave. | Vehicle Checkups, Vehicle Maintenance, Vehicle Products, Vehicle Tune-ups & Mods and Garage Inspections. |
| Pierson Construction Ltd. | (780) 608-6619 | | Custom Homes, RTM Homes, Shops, Renovations and General Contracting. |
| Plumbing With Pride | (780) 678-9042 | 4914 50 St. | Plumbing, Heating and Gas Fitting. |
| Ramstad Realty | (780) 678-6405 | 5333 55 Ave. | Real Estate. |
| RCS Enterprises | (780) 372-3832 | | Concrete Liners. |
| Rowland Parker & Associates | (780) 372-3627 | 4909 50 St. | Accounting Services. |
| Royal Purple | (780) 372-2441 | | Service Club. |
| Sandin's Paint and Body | (780) 372-2455 | | Automotive Repair, Windshields/ Rock Chips, Accessories, Custom Painting and Insurance Claims. |
| Servus Credit Union | (780) 372-3772 | 5101 50 St. | Bank, Chequing and Savings Accounts, Credit Accounts, Investments and Loans. |
| Signature Tire Bashaw | (780) 372-3755 | 5031 46 Ave. | Tires, Mechanical Parts and General Car Supplies. |
| St. Peter's Lutheran Church Cemetery | (403) 784-3437 | NW 34-42-22 W4 | Cemetery. |
| Stenlund's Trucking | (403) 323-9744 | | Trucking. |
| The Bakedery | (780) 372-2141 | 4912 50 St | Cannabis Retail and Accessories. |
| The Cooperators | 780-372-4002 | 5002 50 St. | Different Types of Insurance, Financial Advisors, Party Alcohol Liability, Tax Free Savings Accounts, Prize Indemnity Insurance and Mortgage Guard. |
| The Other Place | (780) 619-5255 | 5109 50 St. | Restaurant and Coffee Shop. |
| One Painted Paw | onepaintedpaw@gmail.com | 4901 50 St. | Gift Shop. |
| Town of Bashaw | (780) 372-3911 | 5011 52 Ave. | Recycling, Bulk Water Sales, Permits, Taxes and Water/Sewage/Garbage. |
| Trailer Parks Bros. RV Storage | (780) 608-5455 | Behind Bashaw Farm and Building Supplies Ltd. | Fenced Security, RV Storage and Storage Sheds Available. |
| Troll Printing | (780) 336-1053 or (780) 372-2210 | 4920 50 St. | Printing and Vinyl. |
| W.A. Grain & Pulse Solutions | (780) 372-4194 | 5110 48 St. | Pulses, Cereals and Oilseeds. |
| Wong's Restaurant | (780) 372-3823 | 5013 50 St. | Restaurant. |
| Worth Repeating Restoration | (780) 678-1234 | 4914 50 St. | Restore and Modernize Furniture. Home Decor Items and Furniture. |
| Zion Lutheran Parish | (780) 372-3845 | 5012 52 Ave. | Worship Services. |

Do you see your business or has your information changed?

**The Town of Bashaw Directory details all local business and organization contact information. This is included at no cost!
It is printed every 4 months (March, June, September and December) and is always available online.**

Please inform us of any updates to your information.

ADVERTISE MONTHLY



HOW TO SUBMIT YOUR CONTENT



Community Connections is a space for Bashaw & Area non-profit groups and community organizations to advertise their information, programs & services, events and activities each month.

FREE Option- Content will be displayed as 'text-only' listings.

To submit please provide the following:

Title, Details, Time, Location, Contact and any other applicable information.

PAID Option- If you wish to format your own AD, please submit 'camera-ready' content.

1/4 PAGE AD- w: 3.4 x h: 4.7, \$15.00 per AD

VERTICAL 1/2 PAGE AD- w: 3.4 x h: 9.3, \$25.00 per AD

HORIZONTAL 1/2 PAGE AD- w: 6.8 x h: 4.7, \$25.00 per AD

Submissions must be edited and ready for print.

Newsletters reach area residents by mail and can be found online,
<https://bashawcrc.com/newsletters>. Contact us to have your content included in the next edition.

VIEW ONLINE

www.bashawcrc.com

SUBMIT TO

frontdesk.bdss@gmail.com or 780-372-4074

