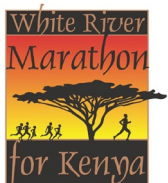
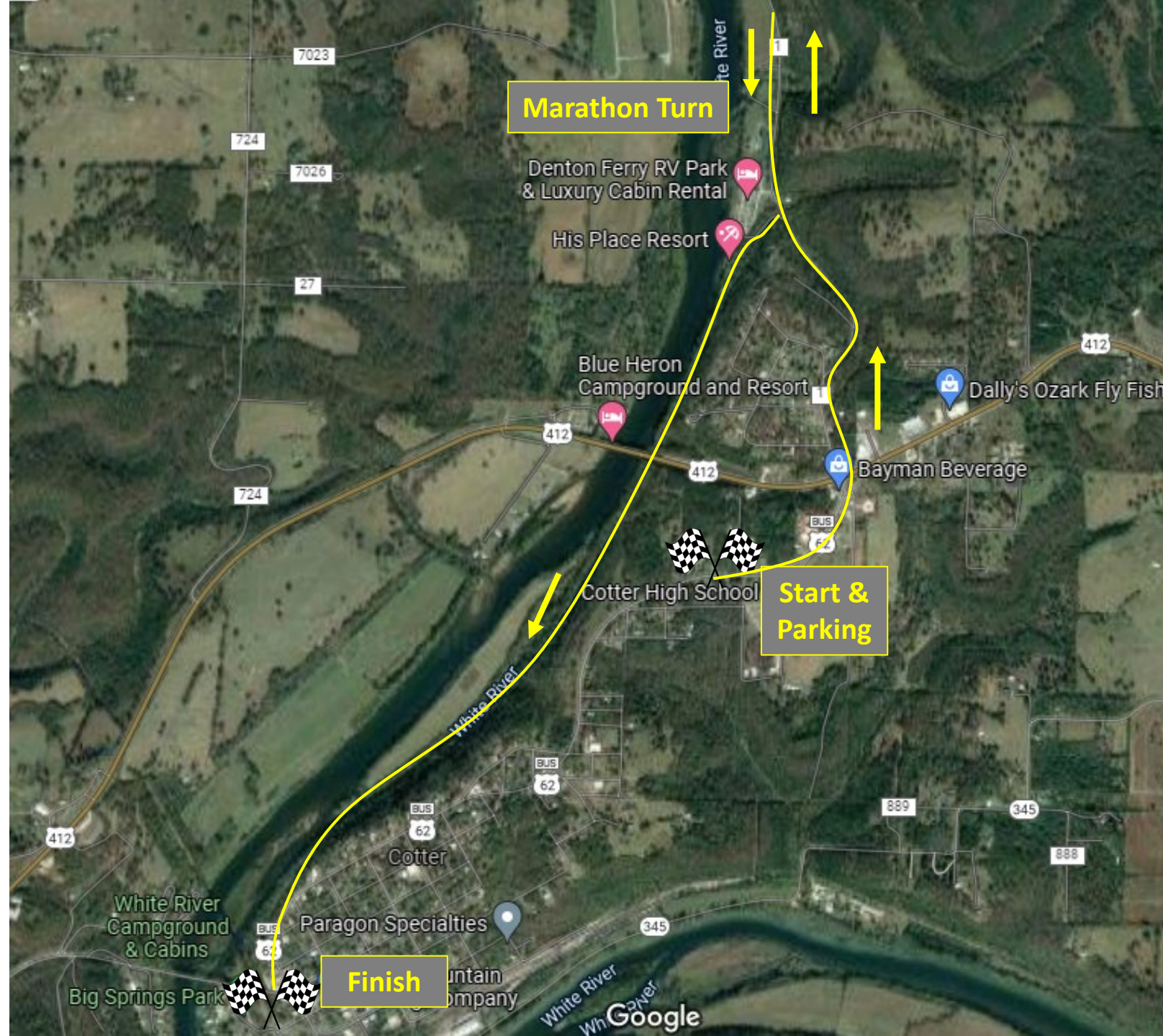


Big Overview

- Race starts at Cotter School
- Race ends at Big Spring Park
- Shuttle vans will take runners back to the school
- Half is essentially out and back
- Marathon is out, most of the way back to the turn, out again, and back to finish.



NEW PARKING!!

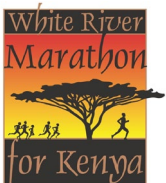
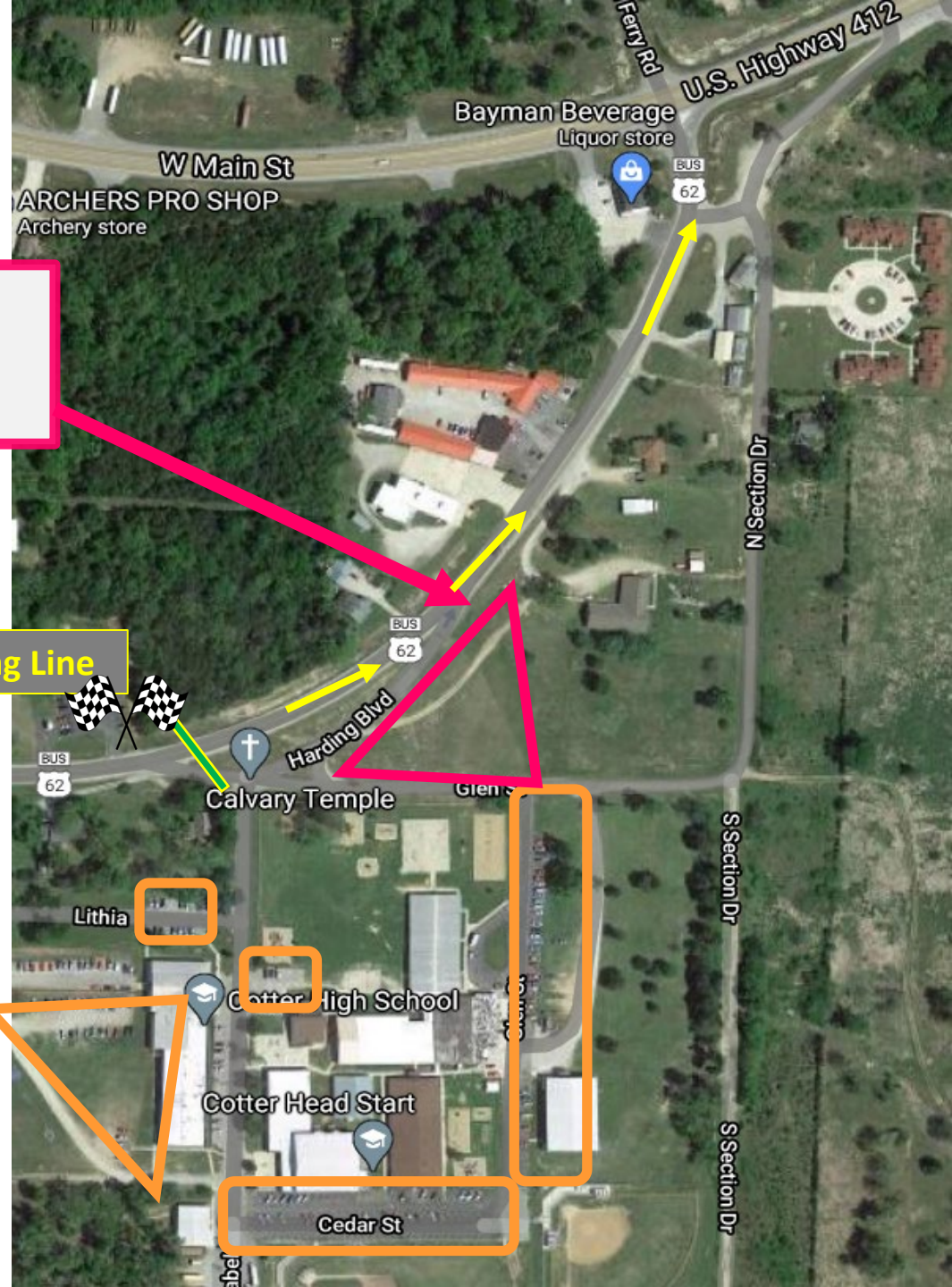
There are many parking options available on Cotter School campus that we will use as indicted by the orange boxed in areas.

Please follow signs and the direction of the parking attendants.

**NO
PARKING**

New Starting Line

PARKING



NEW PARKING!!

There are many parking options available on Cotter School campus that we will use.

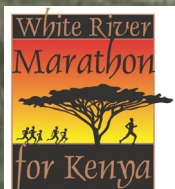
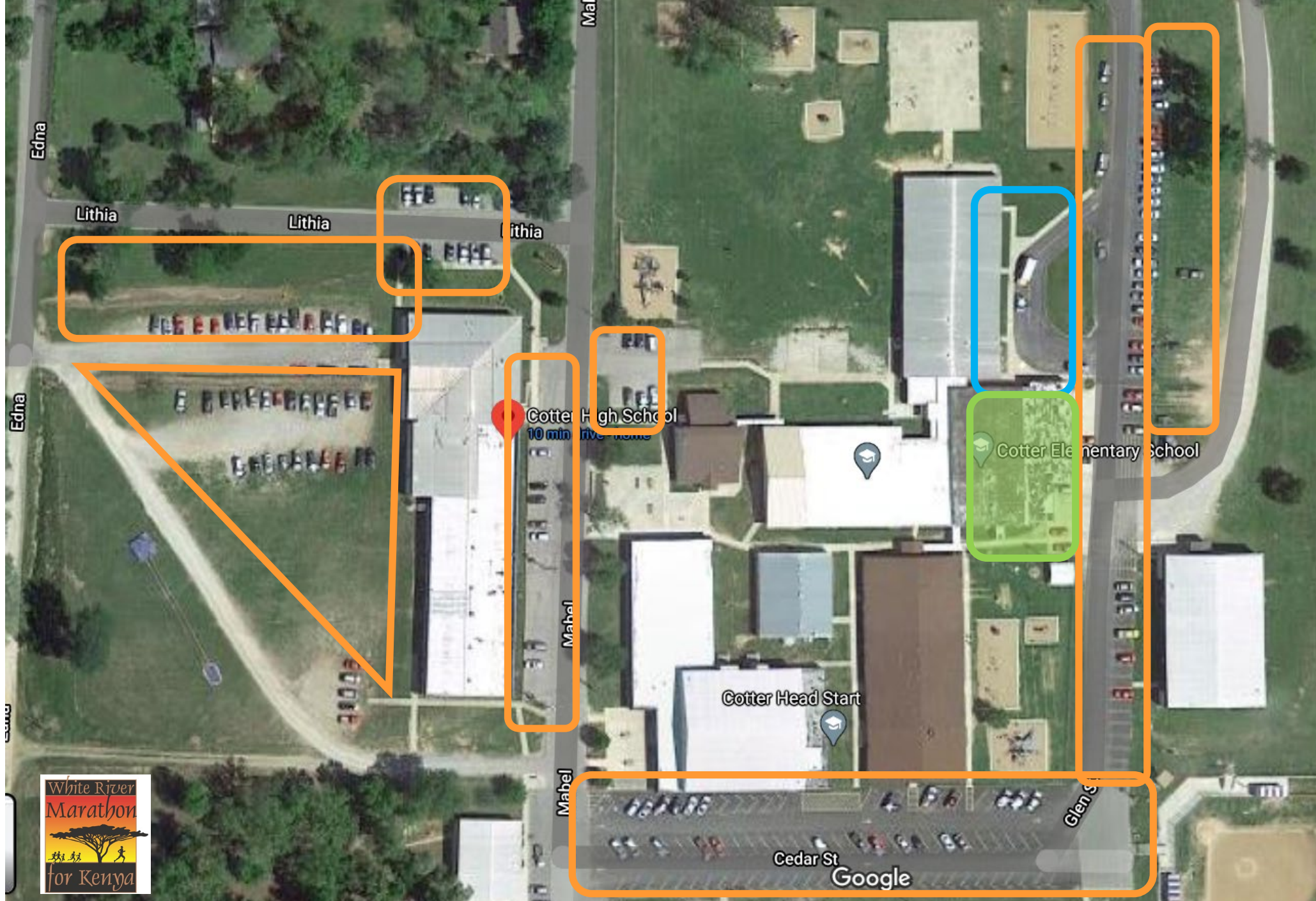
The big field will not be used as the main parking area as in the past

Key:

Parking areas

Shuttle drop off

Pickup/Cafeteria

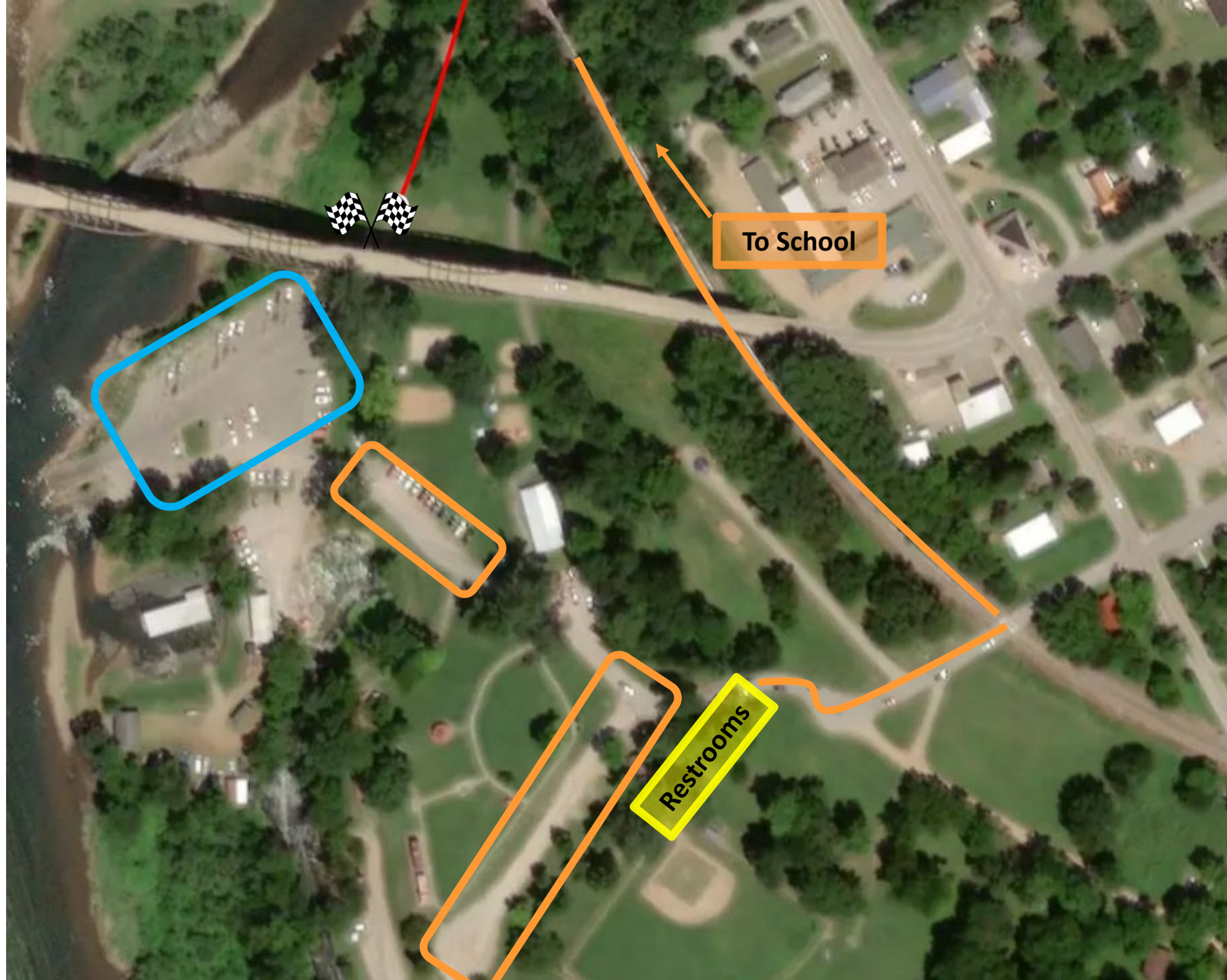


Finish Line

- Finish under the bridge.
- Blue Parking Area for shuttle vans and staff parking only.
- Orange lots for spectator parking
- Restroom facilities and porta-potties.

Key:

Spectator Parking
Shuttle drop off



POST RACE

- Enter the Cafeteria
- Pick up your food and award (if applicable)
- Eat in the Cafeteria or socially distance and utilize the outdoor seating area.

Key:

Parking areas

Shuttle drop off

Seating

