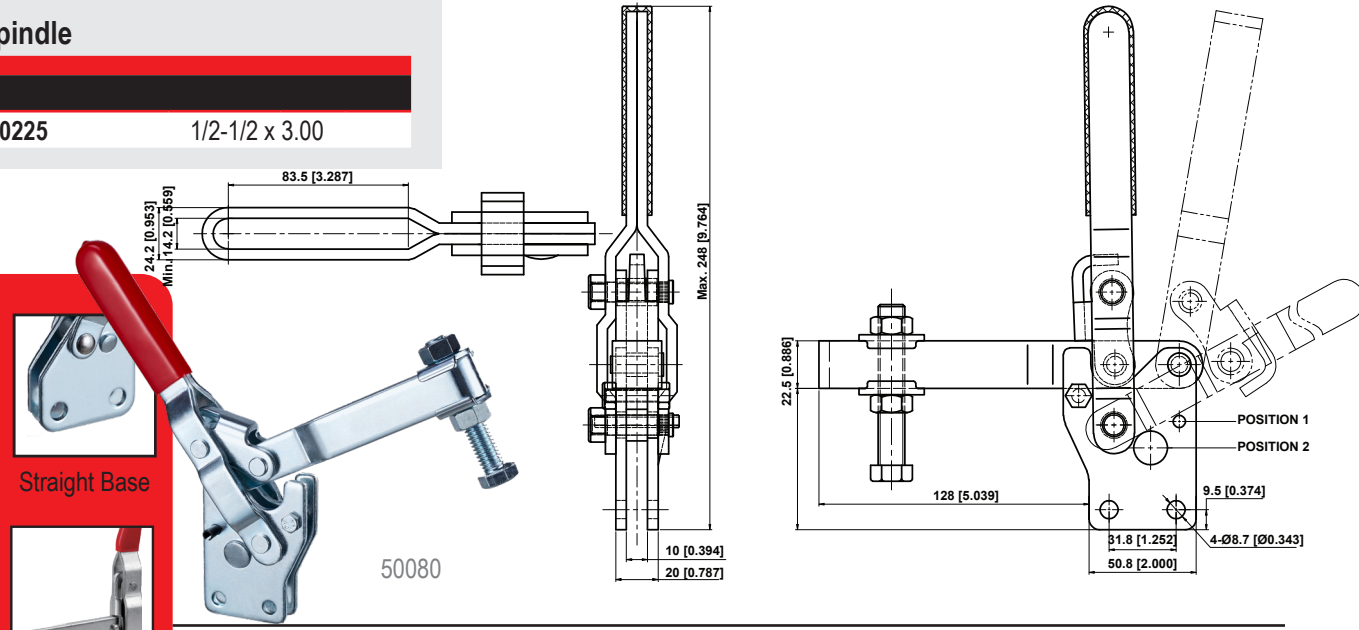


Vertical Handle Toggle Clamps

Vertical Handle Toggle Clamps

Spindle

70225 1/2-1/2 x 3.00



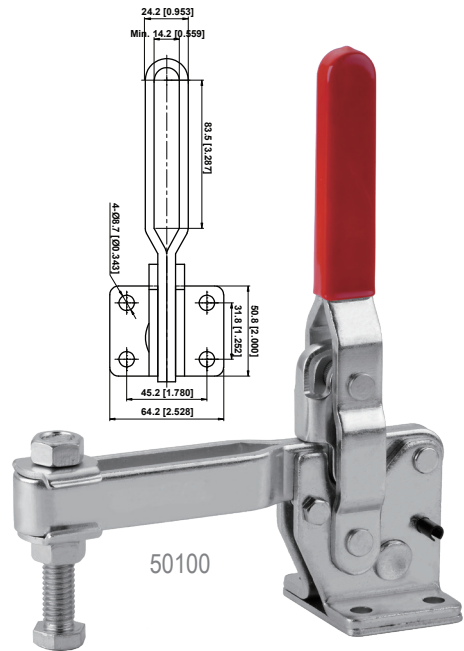
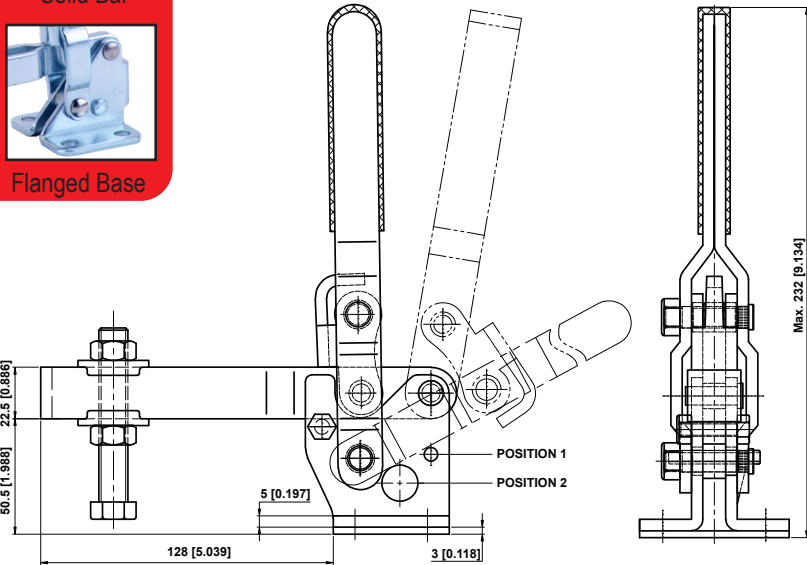
Straight Base



Solid Bar

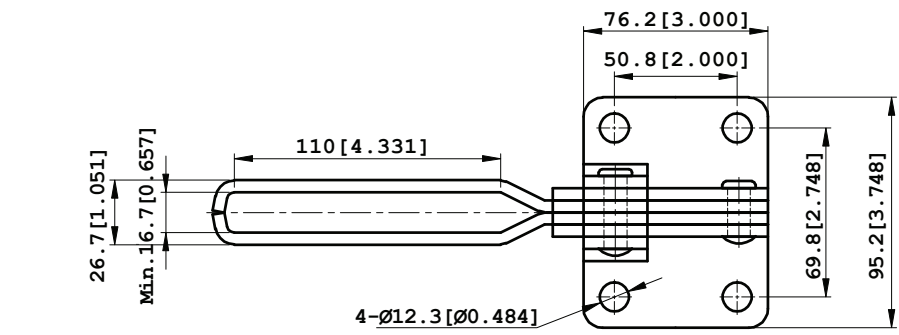


Flanged Base

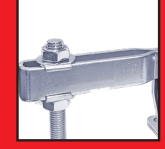


Spindle

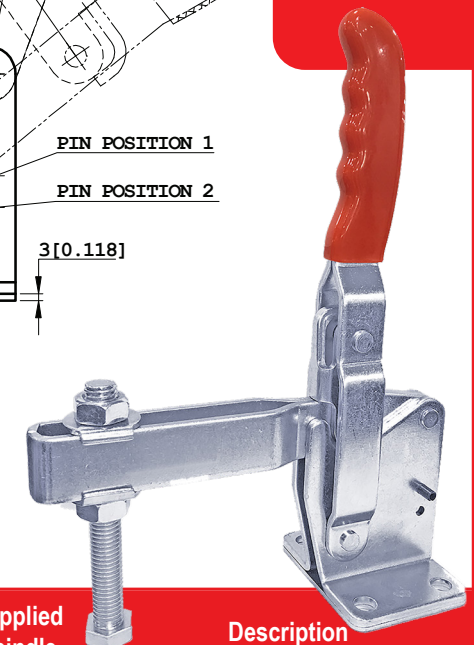
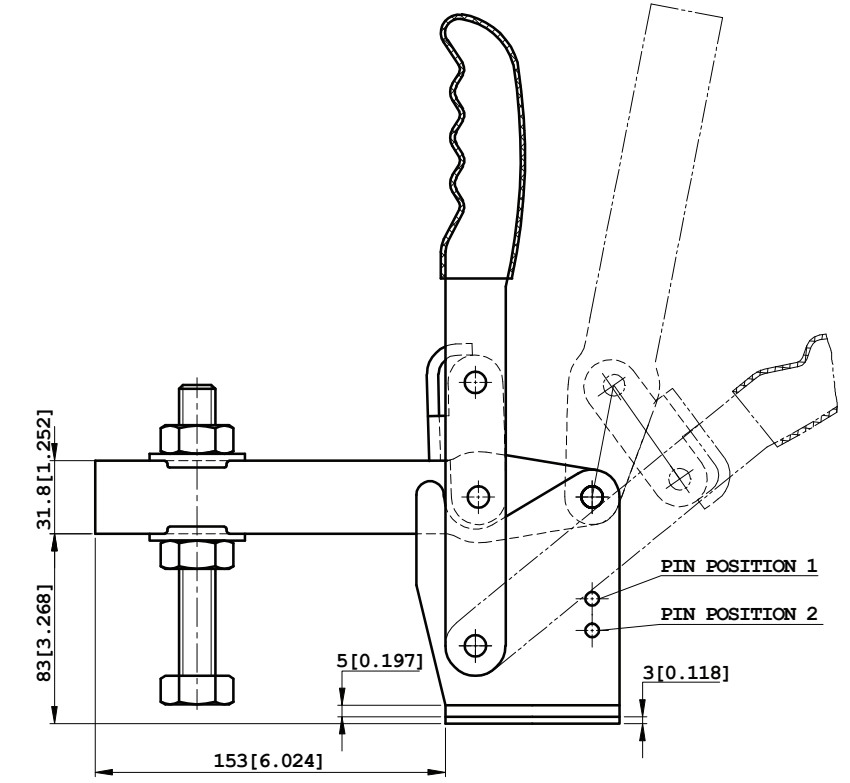
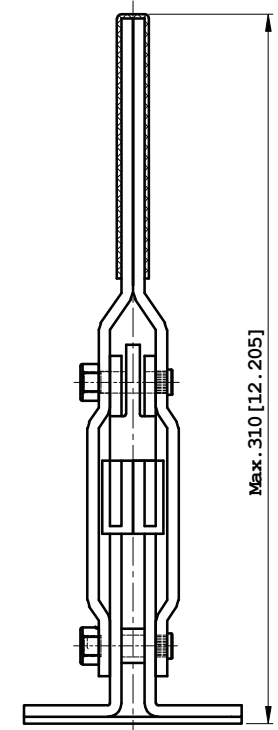
70235 5/8-11 X 5



Flanged Base



U-Bar



Model	Holding Capacity	Weight	Bar Opens	Handle Opens	Supplied Spindle	Description
	N (lbf)	Kg (lb.)				
50100	4500 1012.5	1.25 2.76	100°-115°	62°-68°	70225	Flanged Base, U-Bar
50080	4500 1012.5	1.25 2.76	100°-115°	62°-68°	70225	Straight Base, U-Bar
50060	4500 1012.5	1.25 2.76	100°-115°	62°-68°	70225	Flanged Base, Solid Bar
50040	4500 1012.5	1.25 2.76	100°-115°	62°-68°	70225	Straight Base, Solid Bar,

Model	Holding Capacity	Weight	Bar Opens	Handle Opens	Supplied Spindle	Description
	N (lbf)	Kg (lb.)				
50020	5500 1237.5	2.54 5.6	100°-140°	48°-60°	70235	Flanged Base, U-Bar
50000	5500 1237.5	2.54 5.6	100°-140°	48°-60°	70235	Flanged Base, Solid Bar

Products with hardened bushing at key pivot points.