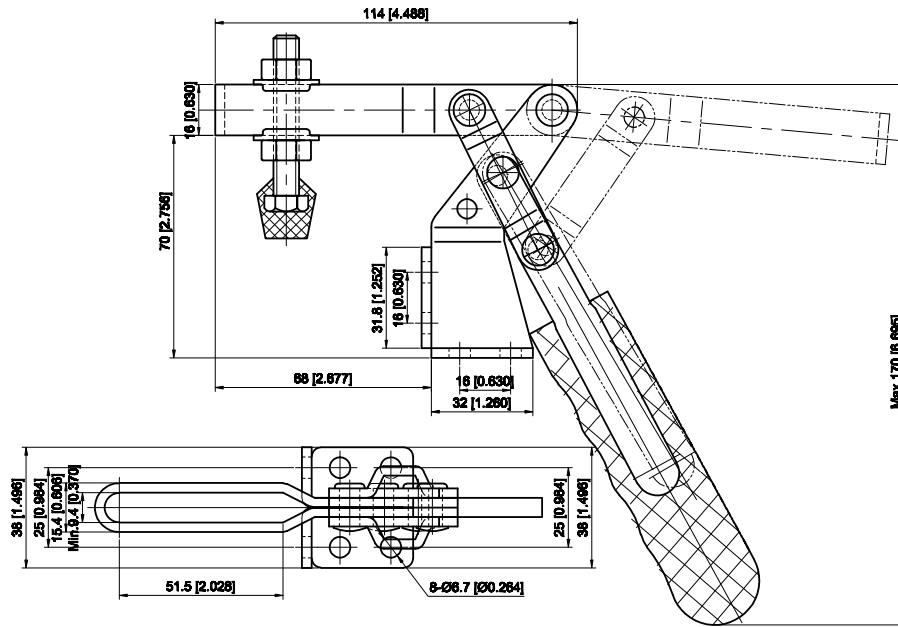


Horizontal Handle Toggle Clamps

Spindle

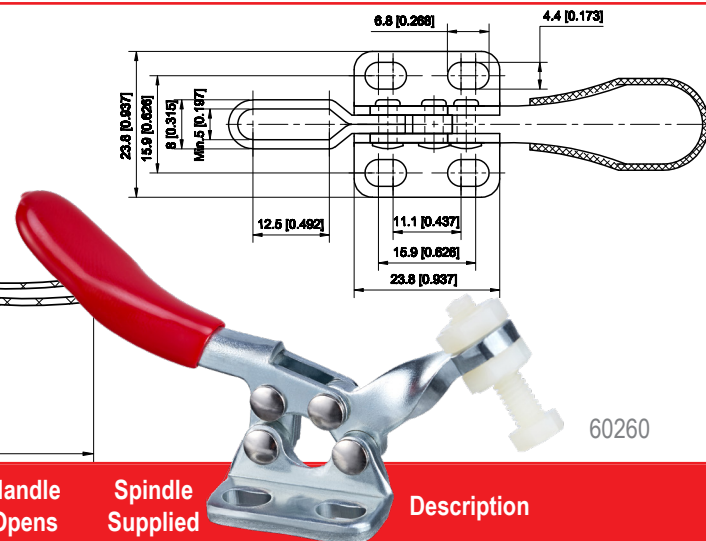
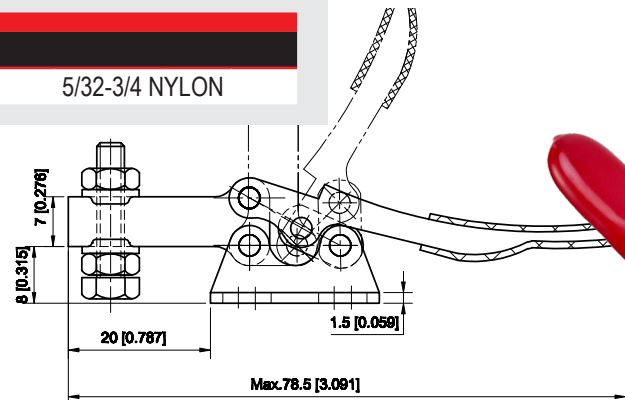
70165 5/16-18 X 2-1/2



Model	Holding Capacity	Weight	Bar Opens	Handle Opens	Supplied Spindle	Description
	N (lbf)	Kg (lb.)				
50140	1000	0.40	185°	60°	70165	Double Flanged Base, U-Bar
	225	0.88				

Spindle

70200 5/32-3/4 NYLON

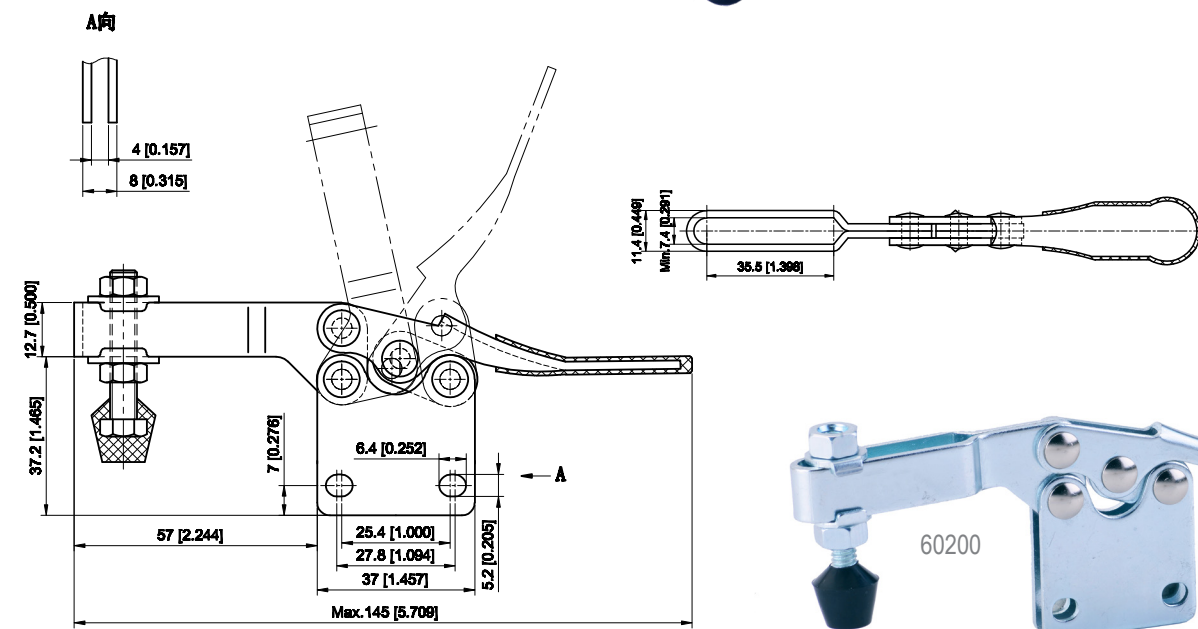
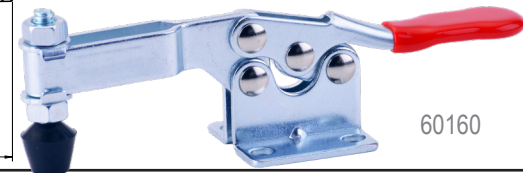
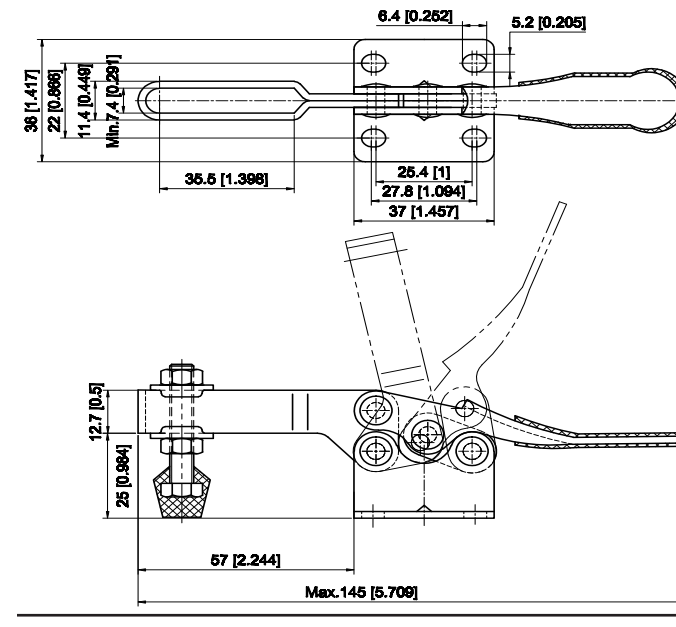


Model	Holding Capacity	Weight	Bar Opens	Handle Opens	Spindle Supplied	Description
	N (lbf)	Kg (lb.)				
60240	270	0.035	90°	80°	70200	Flanged Base, U-Bar
	60.75	0.08				
60260	270	0.03	90°	80°	70200	Flanged Base, Solid Bar
	60.75	0.07				
19000 (stainless steel)	900	0.13	85°	60°	70200	Straight Base, Solid Bar
	202.5	0.29				
60280	270	0.03	90°	80°	70200	Straight Base, Solid Bar
	60.75	0.07				
60300	270	0.03	90°	80°	70200	Straight Base, U-Bar
	60.75	0.07				

Horizontal Handle Toggle Clamps

Spindle

70155 1/4-20 x 1.75



Model	Holding Capacity	Weight	Bar Opens	Handle Opens	Supplied Spindle	Description
	N (lbf)	Kg (lb.)				
60160	900	0.13	85°	60°	70155	Flanged Base, U-Bar
	202.5	0.29				
60200	900	0.13	85°	60°	70155	Straight Base, U-Bar
	202.5	0.29				
60180	900	0.13	85°	60°	70155	Flanged Base, Solid Bar
	202.5	0.29				
60140	900	0.13	85°	60°	70155	Straight Base, Solid Bar
	202.5	0.29				



Straight Base



Solid Bar



Flanged Base