



**VERTICAL
TOGGLE
CLAMPS** **31**



**HORIZONTAL
TOGGLE
CLAMPS** **37**

**LATCH TYPE
TOGGLE
CLAMPS** **41**



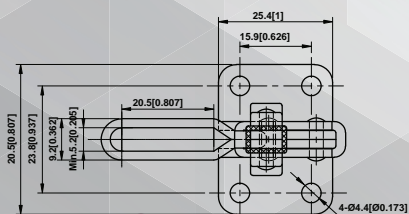
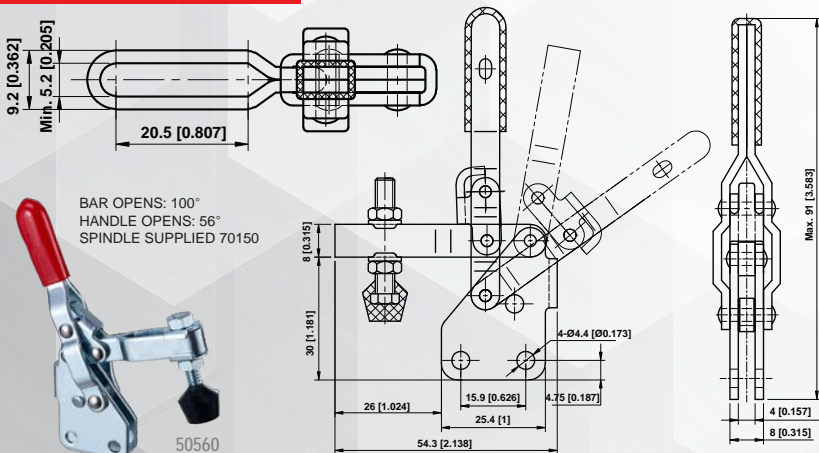
**PUSH/PULL
TOGGLE
CLAMPS** **45**



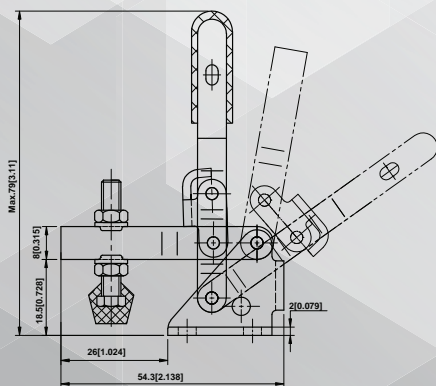
VERTICAL CLAMPS

Spindle #70150

3/16-24 X 1.375



50540



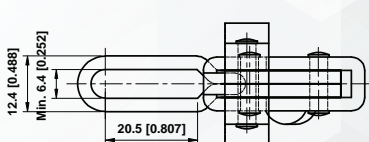
Model	Holding Capacity	Weight	Bar Opens	Handle Opens	Supplied Spindle	Description
	N (lbf)	Kg (lb.)				
50540	500 112.5	0.06 0.13	100°	56°	70150	Flanged Base, U-Bar, Straight Handle
17040 (stainless steel)	500 112.5	0.06 0.13	100°	56°	70150	Flanged Base, U-Bar, Straight Handle
50560	500 112.5	0.06 0.13	100°	56°	70150	Straight Base, U-Bar, Straight Handle

VERTICAL CLAMPS

Continued

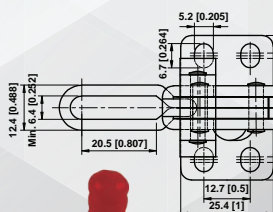
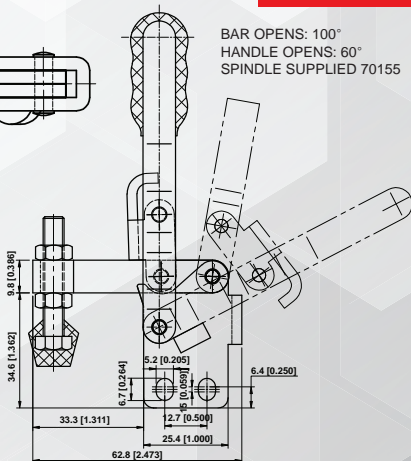
Spindle #70155

1/4-20 X 1.75



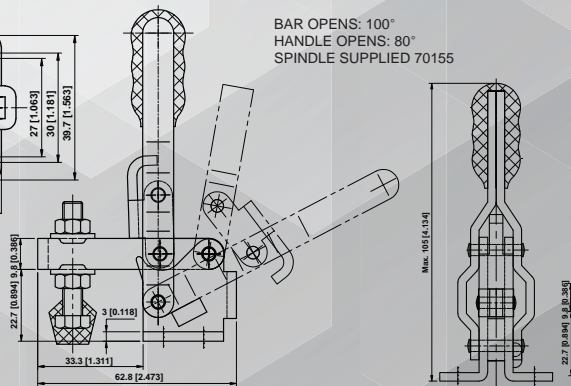
50440

BAR OPENS: 100°
HANDLE OPENS: 60°
SPINDLE SUPPLIED 70155



50520

BAR OPENS: 100°
HANDLE OPENS: 80°
SPINDLE SUPPLIED 70155



Model	Holding Capacity	Weight	Bar Opens	Handle Opens	Supplied Spindle	Description
	N (lbf)	Kg (lb.)				
50500	910 204.75	0.17 0.37	100°	60°	70155	Flanged Base, Fixed Spindle, Straight Handle
50520	910 204.75	0.17 0.37	100°	60°	70155	Flanged Base, U-Bar, Straight Handle
17040 (stainless steel)	500 112.5	0.06 0.13	100°	56°	70150	Flanged Base, U-Bar, Straight Handle
50440	910 204.75	0.17 0.37	100°	60°	70155	Straight Base, U-Bar, Straight Handle
50460	910 204.75	0.17 0.37	100°	60°	70155	Straight Base, Fixed Spindle, Straight Handle
50480	910 204.75	0.17 0.37	100°	60°	70155	Flanged Base, Fixed Spindle, T-Handle
50420	910 204.75	0.17 0.37	100°	60°	70155	Flanged Base, Solid Bar, T-Handle



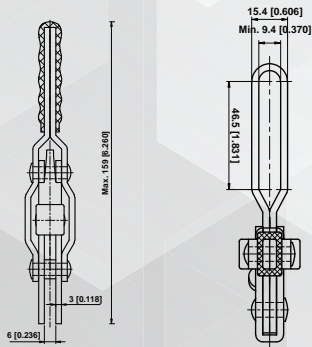
VERTICAL CLAMPS

Continued

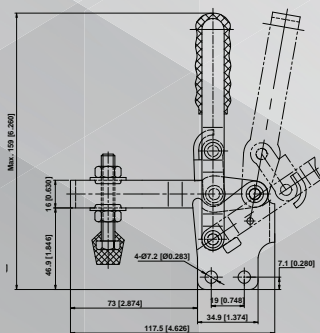
Spindle #70165

5/16-18 X 2.

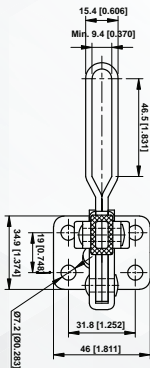
*Solid Bar versions supplied with bolt retainer.



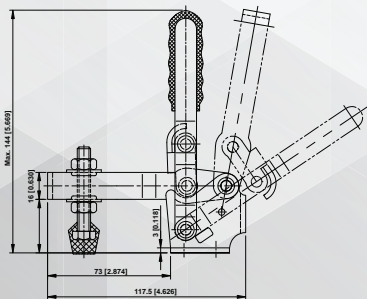
BAR OPENS: 100°
HANDLE OPENS: 60°
SPINDLE SUPPLIED 70165



50380



BAR OPENS: 100°-115°
HANDLE OPENS: 60°
SPINDLE SUPPLIED 70165



Model	Holding Capacity	Weight	Bar Opens	Handle Opens	Supplied Spindle	Description
	N (lbf)	Kg (lb.)				
50360	2270 510.75	0.37 0.82	100°	60°	70165	Flanged Base, Long U-Bar, Straight Handle
50380	2270 510.75	0.355 0.78	100°	60°	70165	Flanged Base, Short U-Bar, Straight Handle
17060 (stainless steel)	2270 510.75	0.355 0.78	100°	60°	70165	Flanged Base, Short U-Bar, Straight Handle
50340	2270 510.75	0.355 0.78	100°	60°	70165	Straight Base, Short U-Bar, Straight Handle
50400	2270 510.75	0.37 0.82	100°	60°	70165	Flanged Base, Short U-Bar, T-Handle
50300	2270 510.75	0.34 0.75	100°	60°	70165	Flanged Base, Short Solid Bar, Straight Handle
50240	2270 510.75	0.37 0.82	100°	60°	70165	Straight Base, Long U-Bar, Straight Handle
50280	2270 510.75	0.355 0.78	100°	60°	70165	Flanged Base, Long Solid Bar, Straight Handle
50320	2270 510.75	0.34 0.75	100°	60°	70165	Straight Base, Short Solid Bar, Straight Handle
50260	2270 510.75	0.355 0.78	100°	60°	70165	Straight Base, Long Solid Bar, Straight Handle

VERTICAL CLAMPS

Continued

Spindle #70160

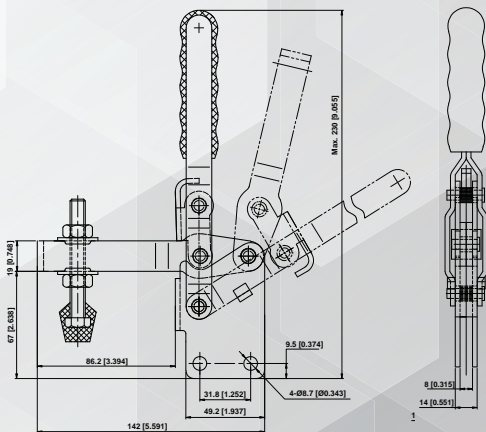
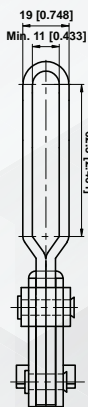
3/8-16 X 3.5

Solid Bar versions supplied with bolt retainer.



50120

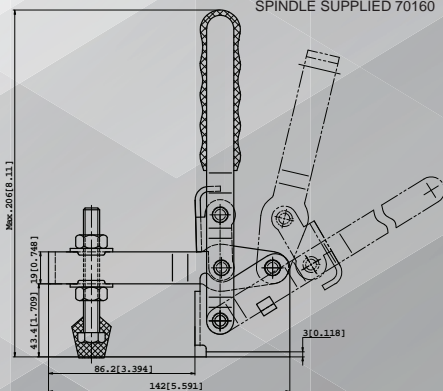
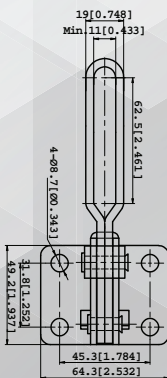
BAR OPENS: 100°-115°
HANDLE OPENS: 62°-68°
SPINDLE SUPPLIED 70160



BAR OPENS: 105°
HANDLE OPENS: 58°
SPINDLE SUPPLIED 70160



50220



Model	Holding Capacity	Weight	Bar Opens	Handle Opens	Supplied Spindle	Description
	N (lbf)					
50220	3400 765	0.635 1.40	105°	58°	70160	Flanged Base, U-Bar, Straight Handle
50160	3400 765	0.68 1.5	105°	58°	70160	Flanged Base, Solid Bar, Straight Handle
50200	3400 765	0.68 1.5	105°	58°	70160	Straight Base, Solid Bar, Straight Handle
50120	3400 765	0.635 1.40	105°	58°	70160	Straight Base, U-Bar, Straight Handle
50180	3400 765	0.712 1.57	105°	58°	70160	Flanged Base, U-Bar, T-Handle



VERTICAL CLAMPS

Continued

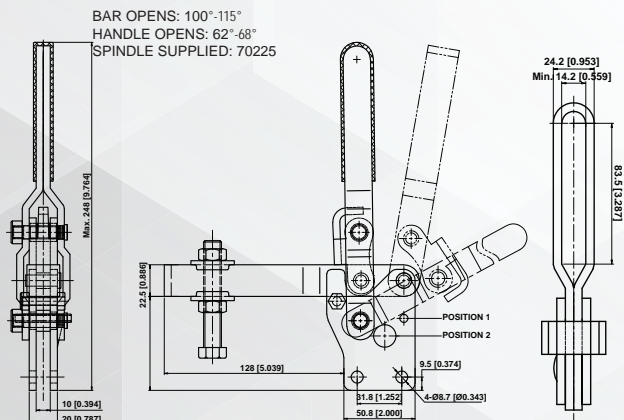
Spindle #70225

1/2-12 X 3

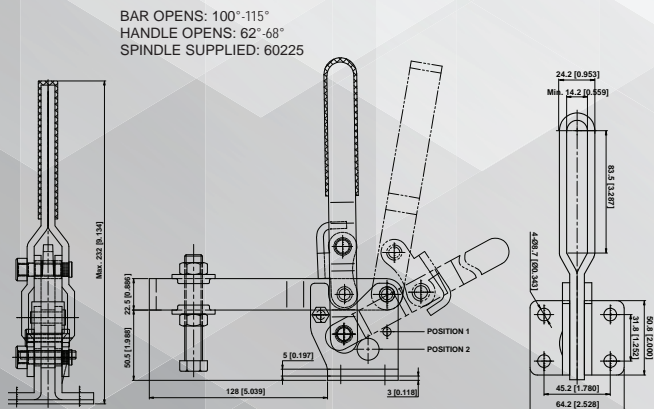
Products with hardened bushing at key pivot points.



50080



50100



Model	Holding Capacity	Weight	Bar Opens	Handle Opens	Supplied Spindle	Description
	N (lb)	Kg (lb.)				
50100	4500 1012.5	1.25 2.76	100°-115°	62°-68°	70225	Flanged Base, U-Bar
50080	4500 1012.5	1.25 2.76	100°-115°	62°-68°	70225	Straight Base, U-Bar
50060	4500 1012.5	1.25 2.76	100°-115°	62°-68°	70225	Flanged Base, Solid Bar
50040	4500 1012.5	1.25 2.76	100°-115°	62°-68°	70225	Straight Base, Solid Bar

VERTICAL CLAMPS

Continued

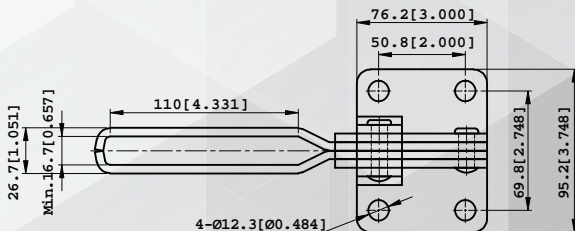
Spindle #70235

5/8-11 X 5

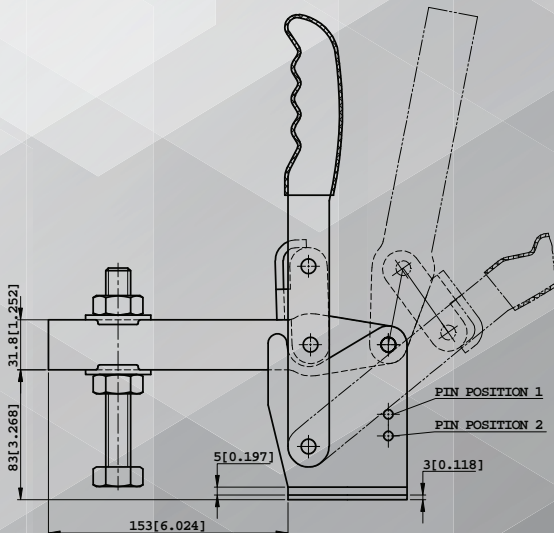
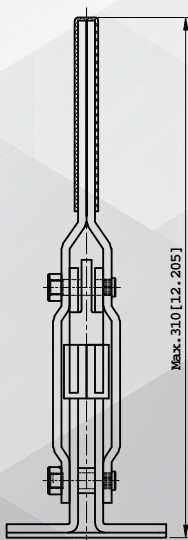
Products with hardened bushing at key pivot points.



50020



BAR OPENS: 100°-140°
HANDLE OPENS: 48°-60°
SPINDLE SUPPLIED 60236



Model	Holding Capacity	Weight	Bar Opens	Handle Opens	Supplied Spindle	Description
	N (lbf)	Kg (lb.)				
50020	5500 1237.5	2.54 5.6	100°-140°	48°-60°	70235	Flanged Base, U-Bar
50000	5500 1237.5	2.54 5.6	100°-140°	48°-60°	70235	Flanged Base, Solid Bar



HORIZONTAL CLAMPS

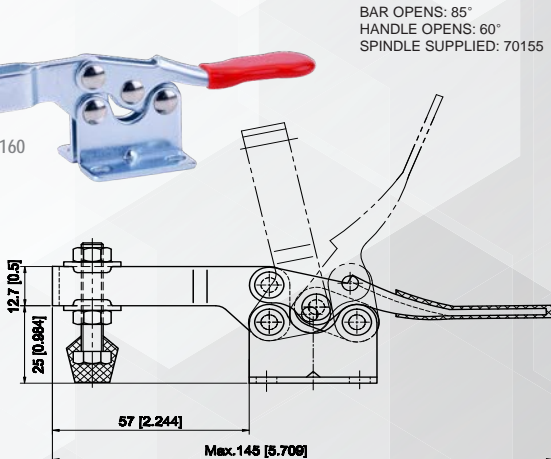
Continued

Spindle #60155

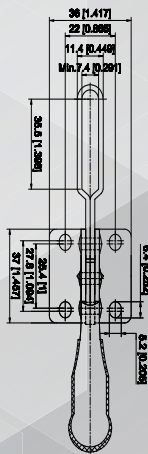
1/4-20 x 1.75



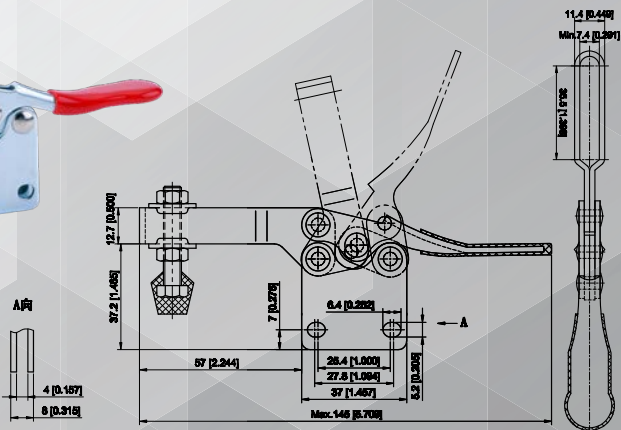
60160



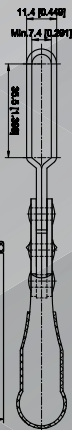
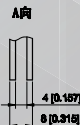
BAR OPENS: 85°
HANDLE OPENS: 60°
SPINDLE SUPPLIED: 70155



60200



BAR OPENS: 85°
HANDLE OPENS: 60°
SPINDLE SUPPLIED: 70155



Model	Holding Capacity	Weight	Bar Opens	Handle Opens	Supplied Spindle	Description
	N (lbf)	Kg (lb.)				
60160	900 202.5	0.13 0.29	85°	85°	70155	Flanged Base, U-Bar
60200	900 202.5	0.13 0.29	85°	85°	70155	Straight Base, U-Bar
60180	900 202.5	0.13 0.29	85°	60°	70155	Flanged Base, Solid Bar
60140	900 202.5	0.13 0.29	85°	60°	70155	Straight Base, Solid Bar

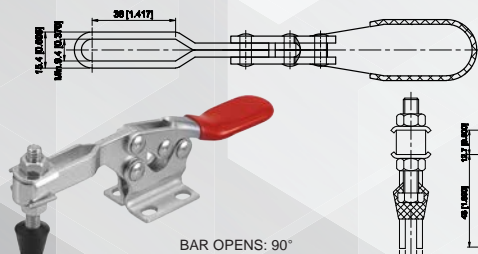


HORIZONTAL CLAMPS

Continued

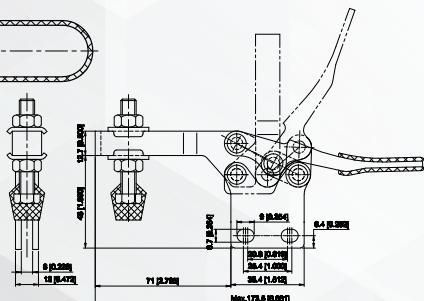
Spindle #70165

5/16-18 X 2.5



60100

BAR OPENS: 90°
HANDLE OPENS: 65°
SPINDLE SUPPLIED: 60165



Model	Holding Capacity		Bar Opens	Handle Opens	Supplied Spindle	Description
	N (lbf)	Kg (lb.)				
60100	2270 510.75	0.265 0.58	90°	65°	70165	Flanged Base, U-Bar
19060 (stainless steel)	2270 510.75	0.265 0.58	90°	65°	70165	Flanged Base, U-Bar
60120	2270 510.75	0.265 0.58	90°	65°	70165	Straight Base, U-Bar

Spindle #70160

3/8-16 X 3.50

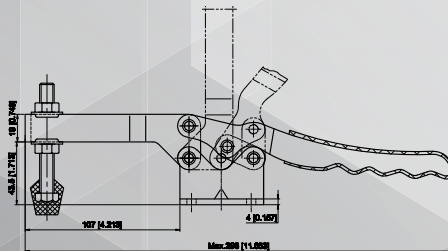
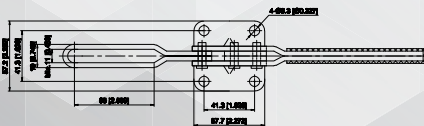
Spindle #70190

M5 X 30P = 0.8



60040

BAR OPENS: 80°
HANDLE OPENS: 50°
SPINDLE SUPPLIED: 60160



Model	Holding Capacity		Bar Opens	Handle Opens	Supplied Spindle	Description
	N (lbf)	Kg (lb.)				
60000	3340 765	0.70 1.54	85°	50°	70160	Flanged Base, U-Bar
60040	3340 765	0.70 1.54	85°	50°	70160	Straight Base, U-Bar
60060	750 168.75	0.088 0.19	94°	76°	70190	Flanged Base, U-Bar

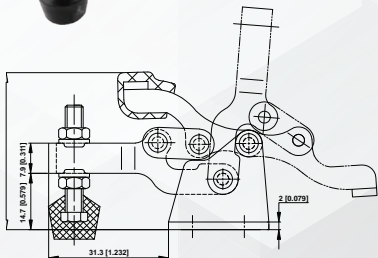


HORIZONTAL CLAMPS

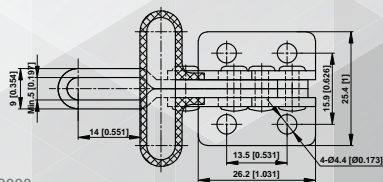
Continued



BAR OPENS: 90°
HANDLE OPENS: 170°
SPINDLE SUPPLIED: 60150



60220 & 18000



Spindle #70150

3/16-24 X 1.375

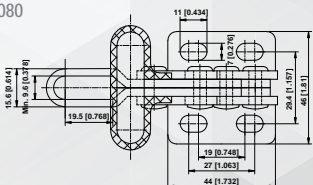
Spindle #70165

5/16-18 X 2.5

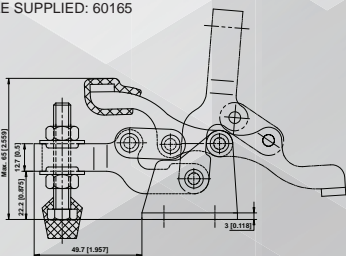
Spindle #70160

3/8-16 X 3.5

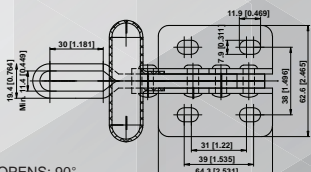
60080



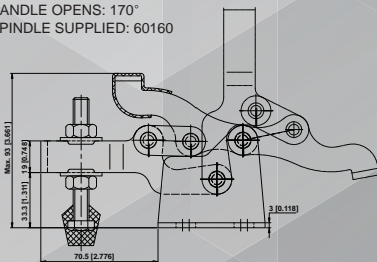
BAR OPENS: 90°
HANDLE OPENS: 170°
SPINDLE SUPPLIED: 60165



60020



BAR OPENS: 90°
HANDLE OPENS: 170°
SPINDLE SUPPLIED: 60160



Material: Steel. 60020 with hardened bushing at key pivot points.

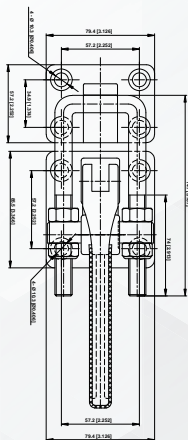
Model	Holding Capacity	Weight	Bar Opens	Handle Opens	Supplied Spindle	Description
	N (lbf)	Kg (lb.)				
60220	670 150	0.06 0.13	90°	170°	70150	Flanged Base, U-Bar, T-Handle
18000 (Stainless Steel)	670 150	0.06 0.13	90°	170°	70150	Flanged Base, U-Bar, T-Handle
17020 (Stainless Steel)	1560 300	0.24 0.54	90°	170°	70150	Flanged Base, U-Bar, T-Handle
60080	1560 350	0.24 0.54	90°	170°	70165	Flanged Base, U-Bar, T-Handle
60020	3340 750	0.27 0.59	90°	170°	70160	Flanged Base, U-Bar, T-Handle

LATCH CLAMPS

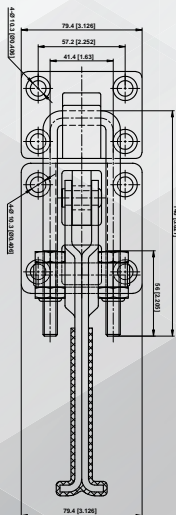
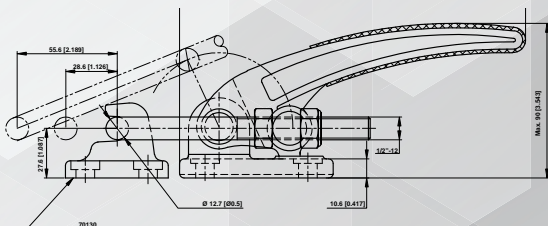
Continued

Accessories

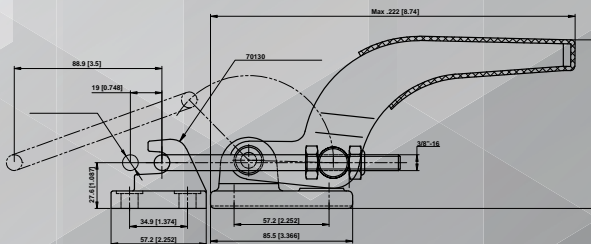
Model	Description
70000	3/8-16"5.82 U-bolt Spindle Accessory
70125	3/8-16"8.66 U-bolt Spindle Accessory
70130	Latch Plate Accessory
70055	1/2-12"5.8 U-bolt Spindle Accessory



40000



40040

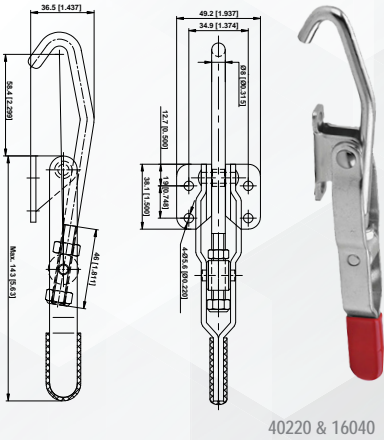


Latch Plate Sold Separately

Model	Holding Capacity	Weight	Accessories
	N (lbf)		
40040	18,180	1.33	70000, 70125, 70130
	4,090.5	2.93	
40000	34,000	1.59	70130, 70055
	7,650	3.51	

LATCH CLAMPS

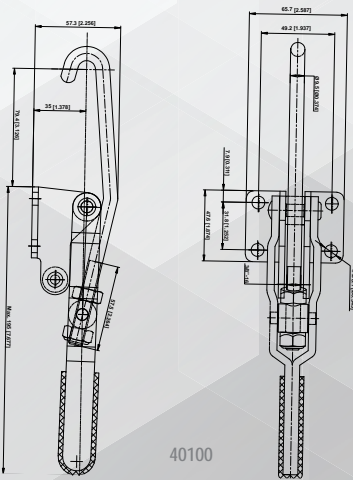
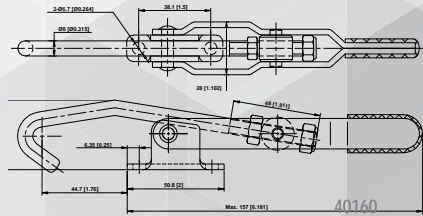
Continued



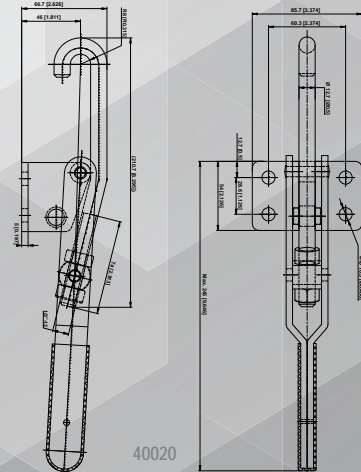
40220 & 16040

Accessories

Model	Description
70070	Hook Spindle Accessory
70075	Hook Spindle Accessory
70080	Hook Spindle Accessory
70050	Hook Spindle Accessory
70145	Hook Spindle Accessory



40100

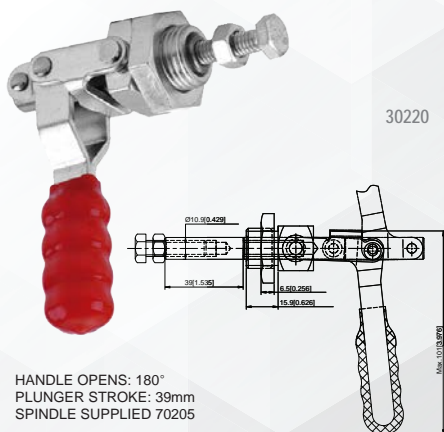


40020

Model	Holding Capacity		Weight	Accessories
	N (lb)	Kg (lb)		
40220	1700	0.27	0.60	70070
	382.5	0.60		
16040 (stainless steel)	1700	0.27	0.60	70075
	382.5	0.60		
40160	1700	0.255	0.56	70080
	382.5	0.56		
40100	3400	0.69	1.52	70050
	765	1.52		
40020	4500	1.13	2.49	70145
	1012.5	2.49		

PUSH/PULL CLAMPS

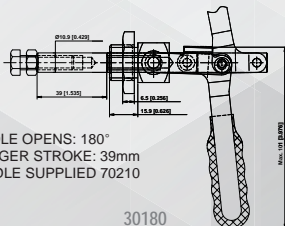
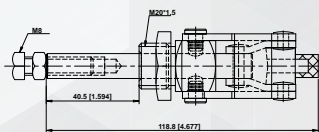
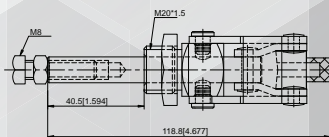
Continued



HANDLE OPENS: 180°
PLUNGER STROKE: 39mm
SPINDLE SUPPLIED 70205

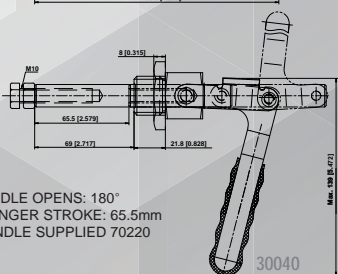
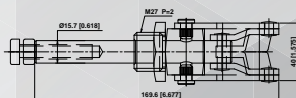
Accessories

Model	Description
70195	M6*P1.0=1.57
70220	M10 X 50P = 1.5
70205	M8 X 30P = 1.25
70230	5/16-18 X 2
70085	Mounting Bracket Accessory
70090	Mounting Bracket Accessory
70095	Mounting Bracket Accessory



HANDLE OPENS: 180°
PLUNGER STROKE: 39mm
SPINDLE SUPPLIED 70210

30180



HANDLE OPENS: 180°
PLUNGER STROKE: 65.5mm
SPINDLE SUPPLIED 70220

30040

Model	Holding Capacity		Weight	Supplied Spindle	Plunger Stroke	Description
	N (lbf)	Kg (lb)				
30220	900 200	0.113 0.25	70195	20mm 0.79"	Imperial Thread	
30160	900 200	0.113 0.25	70195	20mm 0.79"	Metric Thread	
15060 (Stainless Steel)	910 204.75	0.113 0.25	70195	20mm 0.79"	Metric Thread	
15040 (Stainless Steel)	910 204.75	0.113 0.25	70195	20mm 0.79"	Imperial Thread	
30180	1360 306	0.27 0.60	70210	39mm 1.54"	Metric Thread	
30200	1360 306	0.27 0.60	70230	39mm 1.54"	Imperial Thread	
15020	1360 306	0.27 0.60	70210	39mm 1.54"	Metric Thread	
15000	1360 306	0.27 0.60	70230	39mm 1.54"	Imperial Thread	
30060	3180 715.5	0.77 1.70	70305	65.5mm 2.58"	Imperial Thread	
30040	3180 715.5	0.77 1.70	70220	65.5mm 2.58"	Metric Thread	



PUSH/PULL CLAMPS

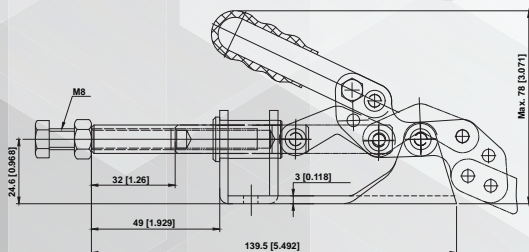
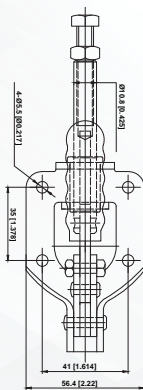
Continued

Spindle #70210

M8 x 50P = 1.25

HANDLE OPENS: 185°
PLUNGER STROKE: 32mm
SPINDLE SUPPLIED 70210

30240



Model	Holding Capacity	Weight	Supplied Spindle	Handle Opens	Plunger Stroke	Description
	N (lbf)	Kg (lb)			mm (inches)	
30240	1360 306	0.3 0.66	70210	180°	32 mm 1.26	Flanged Base, Imperial Thread

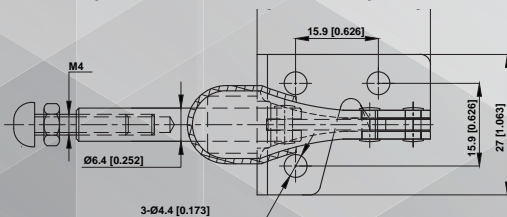
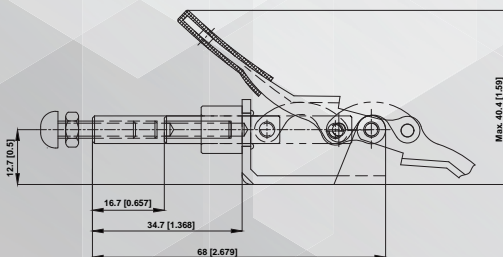
Spindle #70185

M4 x 20P = 0.7 Nylon



30300

HANDLE OPENS: 185°
PLUNGER STROKE: 16.7mm
SPINDLE SUPPLIED 70185



Model	Holding Capacity	Weight	Supplied Spindle	Handle Opens	Plunger Stroke	Description
	N (lbf)	Kg (lb)			mm (inches)	
30300	450 101.25	0.05 0.11	70185	190°	16.7 0.66	Flanged Base



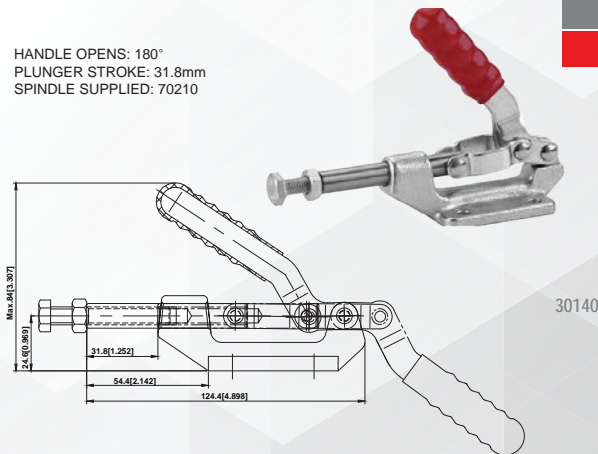
PUSH/PULL CLAMPS

Continued

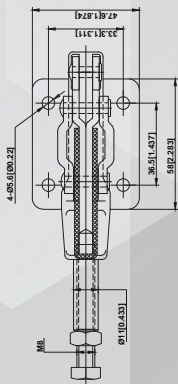
HANDLE OPENS: 180°
PLUNGER STROKE: 31.8mm
SPINDLE SUPPLIED: 70210

Spindle #70210

M8 × 50P = 1.25

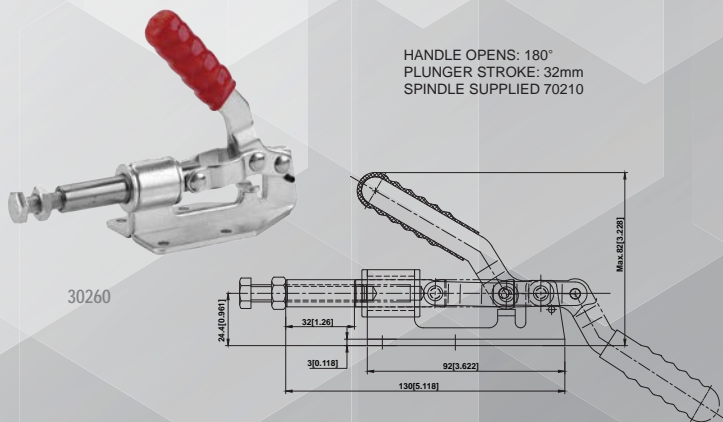


30140

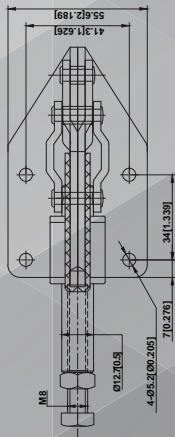


Model	Holding Capacity		Supplied Spindle	Handle Opens	Plunger Stroke	Description
	N (lbf)	Kg (lb)				
30140	2720 612	0.395 0.87	70230	180°	31.8 1.25	Flanged Base

HANDLE OPENS: 180°
PLUNGER STROKE: 32mm
SPINDLE SUPPLIED 70210



30260



Model	Holding Capacity		Supplied Spindle	Handle Opens	Plunger Stroke	Description
	N (lbf)	Kg (lb)				
30260	1800 405	0.397 0.88	70210	180°	32 mm 1.26	Flanged Base, Imperial Thread

CROSS REFERENCE

SHOPFORCE	CLAMP-RITE	DESTACO	CARRLANE	CENTURY	ESSENTRA	GOODHAND	JERGENS	KAKUTA	BRAUER
50540	11011CR	201-U	CL-150-VTC	CT-11011	ETC-11011	GH-101-A	70000	HV 150	V75/2B
50560	11012CR	201-UB	CL-151-VTC	CT-11012	ETC-11012	GH-101-A	70001	HV 151-B	V75/1B
17040	11011CR-SS	201-USS		CT-11011-SS	ETC-11011-SS	GH-101-ASS	70000-SS		
50020	11671CR	267-U	CL-1050-VTC	CT-11671	ETC-11671	GH-11671	70016	HV 1050	V550/2B
50000	11674CR	267-S	CL-1050-VTC	CT-11674	ETC-11674	GH-101-JS	70053		
50100	11471CR	247-U	CL-850-VTC	CT-11471	ETC-11471	GH-11471	70014	HV 850	V450/2B
50080	11472CR	247-UB		CT-11472	ETC-11472	GH-10248	70135		
50060	11474CR	247-S	CL-750-VTC	CT-11474	ETC-11474	GH-10248	70015	HV 750	V450/2A
50040	11477CR	247-SB		CT-11477	ETC-11477	GH-10250	70134		
50500	11020CR	202	CL-250-VTC	CT-11020	ETC-11020	GH-10250	70002	HV 250	V150/2C
50520	11021CR	202-U	CL-253-VTC	CT-11021	ETC-11021	GH-12050-U	70003	HV 250-U	V150/2B
17000	11021CR-SS	202-USS		CT-11021-SS	ETC-11021-SS		70003-SS		
50460	11025CR	202-B	CL-251-VTC	CT-11025	ETC-11025	GH-12055	70005	HV 251-B	V150/1C
50440	11022CR	202-UB		CT-11022	ETC-11022		70004	HV 251-UB	V150/1B
50480	11023CR	202-TU		CT-11023	ETC-11023		70131		
50420	11026CR	202-T		CT-11026	ETC-11026	GH-12070	70121		
50380	11071CR	207-U	CL-450-VTC	CT-11071	ETC-11071	GH-12130	70007	HV 450	V250/2B
17060	11071CR-SS	207-USS		CT-11071-SS	ETC-11071-SS	GH-12130-SS	70007-SS		
50400	11073CR	207-TU	CL-452-VTC	CT-11073	ETC-11073	GH-12131	70009	HV 452-T	
50360	11018CR	207-UL		CT-11018	ETC-11018	GH-12132	70006	HV 253-L	
50340	11072CR	207-UB	CL-451-VTC	CT-11072	ETC-11072	GH-12135	70008	HV 451-B	V250/1B
50240	11019CR	207-ULB		CT-11019	ETC-11019	GH-12137	70133		
50300	11074CR	207-S	CL-350-VTC	CT-11074	ETC-11074	GH-12140	70010	HV 350	V250/2A
50280	11078CR	207-L		CT-11078	ETC-11078	GH-12142	70123		
50320	11077CR	207-SB		CT-11077	ETC-11077	GH-12145	70122		
50260	11079CR	207-LB		CT-11079	ETC-11079	GH-12147	70132		
50220	11101CR	210-U	CL-650-VTC	CT-11101	ETC-11101	12265	70011	HV 650	V350/2B
50120	11102CR	210-UB		CT-11102	ETC-11102		70124		
50160	11104CR	210-S	CL-550-VTC	CT-11104	ETC-11104	GH-12275	70012	HV 550	V350/2A
50200	11107CR	210-SB	CL-551-VTC	CT-11107	ETC-11107	12280	70013	HV 551-B	V350/1A
50180	11103CR	210-TU		CT-11103	ETC-11103	GH-12285	70125		
60220	16051CR	305-U	CL-200-VTC	CT-16051	ETC-16051	GH-13005	70026		V70/2BT
18000	16051CR-SS	305-USS		CT-16051-SS	ETC-16051-SS	GH-13005-SS	70026-SS (70130)		
60080	16071CR	307-U	CL-300-VTC	CT-16071	ETC-16071	GH-13007	70027		
17020	16071CR-SS	307-USS							
60020	16091CR	309-U	CL-500-VTC	CT-16091	ETC-16091	GH-13008	70028		
60240	14051CR	205-U	CL-250-HTC	CT-14051	ETC-14051	GH-201	70018		H50/2B
60260	14054CR	205-S	CL-150-HTC	CT-14054	ETC-14054	GH-201-A	70019		H50/2C
60280	14057CR	205-SB		CT-14057	ETC-14057	GH-201-A	70138		
60160	14151CR	215-U	CL-350-HTC	CT-14151	ETC-14151	GH-201-B	70020		
60200	14152CR	215-UB	CL-351-HTC	CT-14152	ETC-14152	GH-201-BSS	70021		
60180	14154CR	215-S		CT-14154	ETC-14154	GH-201-BSS	70128		
60140	14157CR	215-SB		CT-14157	ETC-14157	GH-201-BSI	70129		
60300	14052CR	205-UB							
19000	14051CR-SS	205-USS		CT-14051-SS	ETC-14051-SS	GH-201-SS	70127		
60000	14351CR	235-U	CL-550-HTC	CT-14351	ETC-14351	GH-20235	70024		H350/2B
60040	14352CR	235-UB		CT-14352	ETC-14352	GH-20236	70025		
60060	14131CR	213-U		CT-14131CR	ETC-14131CR		70137		
50140	11170CR	317-U	CL-475-HTC	CT-11170	ETC-11170	GH-20820	70017		
60100	14251CR	225-U	CL-450-HTC	CT-14251	ETC-14251	GH-225-D	70022		
60120	14252CR	225-UB	CL-451-HTC	CT-14252	ETC-14252	GH-225-DI	70023		
19060	14251CR-SS	225-USS		CT-14251-SS	ETC-14251-SS	GH-225-DSS	70022-SS		
30300	13010CR	601	CL-50-SPC	CT-13010	ETC-13010	GH-301-A	70042		
30280	13010CRM	601-M	CLM-50-SPC	CT-13010M	ETC-13010M	301-AM		SL 10	P50
30240	13050CR	605	CL-150-SPC	CT-13050	ETC-13050	GH-302-F	70046		
30100	13485CRM	608-M	CLM-200-PC	CT-13485M	ETC-13485M	304-EM		SL 210	
30000	13070CR	607		CT-13070	ETC-13070	GH-30607	70051		
30140	13030CR	603	CL-100-PC	CT-13030	ETC-13030	GH-36003	70047		
30120	13030CRM	603-M	CLM-100-PC	CT-13030M	ETC-13030M	36030M		SL 105-2	
30080	13100CR	610	CL-250-SPC	CT-13100	ETC-13100	GH-36010	70050		
30250	13090CR	609		CT-13090	ETC-13090	GH-36092, GH-36020	70049		
30220	13020CR	602	CL-150-TPC	CT-13020	ETC-13020	GH-36202	70043		
30160	13020CRM	602-MM	CLM-150-TPC	CT-13020M	ETC-13020M	36202M		FM 50	P100
15060	13020CRM-SS	602-MSS		CT-13020M-SS	ETC-13020M-SS				
15040	13020CR-SS	602-SS		CT-13020-SS	ETC-13020-SS			70043-SS	
30200	13040CR	604	CL-250-TPC	CT-13040	ETC-13040	GH-36204	70044		
30180	13040CRM	604-MM	CLM-250-TPC	CT-13040M	ETC-13040M	36204M		FM 150	P200
15020	13040CRM-SS	604-MSS		CT-13040M-SS	ETC-13040M-SS				
15000	13040CR-SS	604-SS		CT-13040-SS	ETC-13040-SS			70044-SS	
30060	13240CR	624	CL-350-TPC	CT-13240	ETC-13240	GH-36224	70045		
30040	13240CRM	624-MM	CLM-350-TPC	CT-13240M	ETC-13240M	36224M		FM 250	
30020	13300CRM	630-M	CLM-350-TPC	CT-13300M	ETC-13300M	36330M		SL 350	
40240	12230CR	323	CL-100-PA	CT-12230	ETC-12230	GH-40323	70029	FA 100	LU200H
16100	12230CR-SS	323-SS		CT-12230-SS	ETC-12230-SS	GH-40323-SS	70136		
40180	12240CR	324	CL-110-PA	CT-12240	ETC-12240	GH-40324	70034	FA 130	LU200V
16060	12240CR-SS	324-SS		CT-12240-SS	ETC-12240-SS		70034-SS		
40120	12340CR	334	CL-210-PA	CT-12340	ETC-12340	GH-40334	70035	FA 230	LU400V
16000	12340CR-SS	334-SS		CT-12340-SS	ETC-12340-SS		70035-SS		
40140	12410CR	341	CL-300-PA	CT-12410	ETC-12410	GH-40341	70031	FA 300	
16020	12410CR-SS	341-SS		CT-12410-SS	ETC-12410-SS	GH-40341-SS	70031-SS		
40080	12400CR	344	CL-310-PA	CT-12400	ETC-12400	GH-40344	70036	FA 330	LU700V
40040	12750CR	375	CL-400-PA	CT-12750	ETC-12750	GH-40370	70032	FA 600	
40100	12710CR	371		CT-12710	ETC-12710	GH-40371		PA 270	
40000	12850CR	385	CL-500-PA	CT-12850	ETC-12850	GH-40380	70033	FA 700	
40200	12310CR	331	CL-200-PA	CT-12310	ETC-12310	GH-431	70030	FA 200	LU400H
40060	12010CR	301	CL-150-PA	CT-12010	ETC-12010	GH-43101	70041	PA 150	
16080	12310CR-SS	331-SS		CT-12310-SS	ETC-12310-SS	GH-431-SS	70030-SS		
40020	12810CR	381		CT-12810	ETC-12810	GH-43810	70040	PA 350	
40220	12510CR	351	CL-250-PA	CT-12510	ETC-12510	GH-451	70037	PA 250	LH200
16040	12510CR-SS	351-SS		CT-12510-SS	ETC-12510-SS	GH-451-SS	70037-SS		
40160	12515CR	351-B	CL-251-PA	CT-12515	ETC-12515	GH-452	70038	PA 251-B	