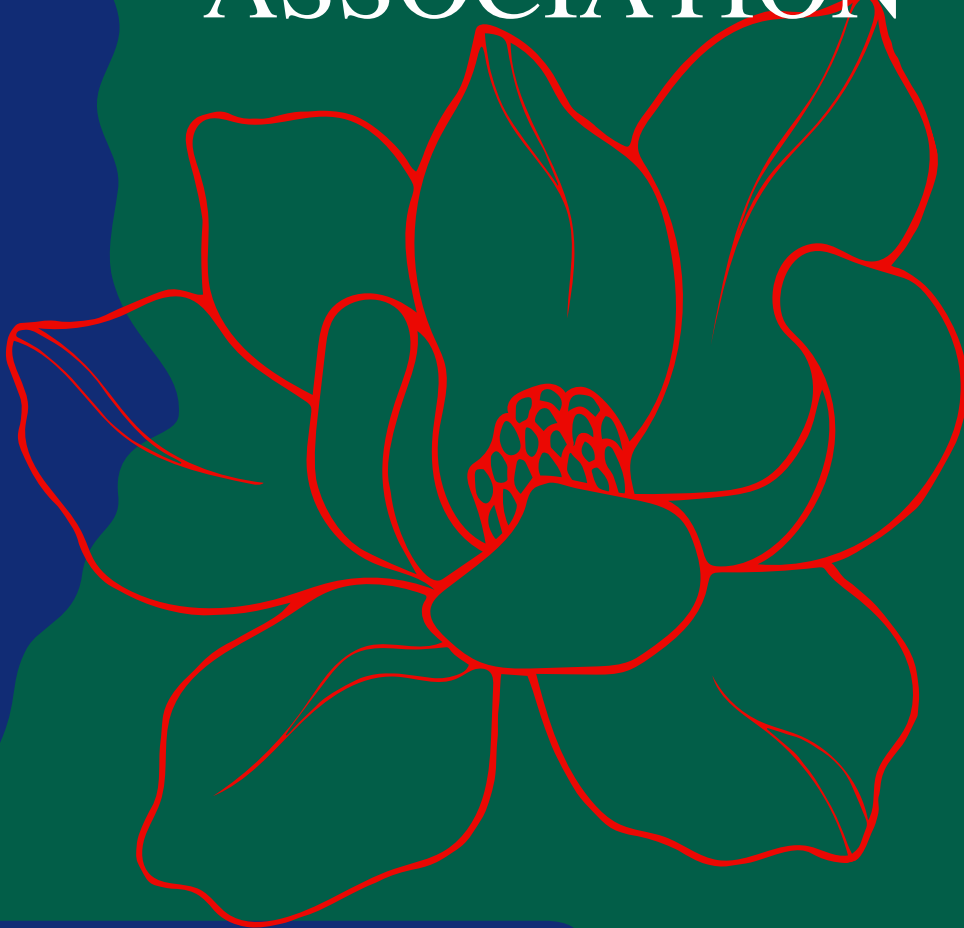


2025

MISSISSIPPI HUNTER JUMPER ASSOCIATION



Prize List

| Sponsors

| Schedule

New Year Premiere
February 7 - 9, 2025



"Putting a smile on the face of your little Champion for 40 years!"

www.winterviewfarm.com

Patti Wright-Shoemaker
Owner/Trainer
601-260-5494

Meghan Roider
Assistant Trainer
225-588-3318



BOWERS CONE
Bowerscone1@gmail.com | 901.606.7750

SUSAN WALT
bdsowalt@gmail.com | 601.278.7563

SOUTHERN TRADITIONS FARM, LLC | 1334 STOKES ROAD | CANTON, MS 39046
STRADITIONSFARM@GMAIL.COM

CLINE TOURS



IT'S TIME TO

travel.

LET US DO THE DRIVING

With top safety ratings and a wide range of vehicle sizing,
we have everything to fulfill your transportation needs.

All you have to do is sit back and ride.

GOOD LUCK

Emme Skinner

& ALL MHJA RIDERS!



TALK TO US

800-233-5307

24/7 Answering Service

www.ClineTours.com

Like us on Facebook &

Follow our Instagram

Scan Here for our Website



MHJA New Year Premiere

Presented by the Mississippi Hunter Jumper Association
February 7 - 9, 2025

JUDGE

Judge: Nancy Seyfried, USEF "R"

SHOW MANAGER

Kathleen Aertker

SHOW SECRETARY

Alisa Gillis 423-800-2111

COURSE DESIGNER

Kathleen Aertker

EMT – Lisa Valadie

VET (on call) - Dixie Equine 601-853-1717

FARRIER (on call) - TBD

Enter online www.horshowsonline.com

HORSE SHOW FACILITY

CANTON MULTIPURPOSE AND EQUINE CENTER

501 SOLDIERS COLONY RD

CANTON, MS 39046

DIRECTIONS TO HORSE SHOW: Follow I-55 to Nissan Pkwy in Madison County. Take exit 118 from I-55 S. Follow Nissan Pkwy to Canton Multipurpose and Equine Center.

HORSE SHOW INFORMATION

HORSE SHOW OFFICE

The Horse Show Office will be open by 10:00 AM the day before the start of the show for processing entries. The office will open 1 hour before the start of the show each day. All numbers will be issued with an open check made out to MHJA.

Returned Checks: A processing fee of 10% or \$40.00 the minimum will be assessed for all non-negotiable checks.

CURRENT PROOF OF NEGATIVE COGGINS IS REQUIRED

All Horses on the showgrounds must be up to date on vaccinations. Any horse with a fever shall be immediately removed from the show grounds or isolated under the direction of the show facility management & show veterinarian.

TENTATIVE SCHOOLING TIMES

Thursday: 2 PM until 7:00 PM

Friday: 6:30 AM until 7:45 AM

Additional schooling between hunters and jumpers will be announced if time allows

Schooling Arena - Safety Notice...

No more than 8 horses at a time in the schooling arena.

Saturday(Ring 1): 6:30 AM -until the end of academy

Saturday(Ring 2): 6:30 AM -7:45 AM

Sunday (Ring 2): 6:30 AM -7:30 AM

Academy schooling (Ring 2) after the derby

Emergency Medical Support will be on the showgrounds during the show and published schooling hours.

WARNING: GIVEN PURSUANT TO MISSISSIPPI CODE ANNOTATED SECTION 95- 11-7:
Under Mississippi law, an equine activity, sponsor, or an equine or livestock professional is not liable for an injury to or death of a participant in equine activities or livestock shows resulting from the inherent risks of equine activities or livestock shows.

HORSE SHOW INFORMATION

**IMPORTANT: ALL RIDERS MUST WEAR AN ASTM/SEI-
APPROVED HELMET WHEN MOUNTED.**

Some sections will be combined or divided, as specified in the MHJA Rule Book, which is available in the horse show office.

Points will be awarded in the appropriate section. The following divisions will be combined without a minimum of 3 horses entered: Long & Short Stirrup, Small, Medium, & Large Pony Hunter, Pre-Child & Pre-Adult Hunter, Modified Children's & Modified Adult Hunter, Children's and Adult Hunter is not permitted at any MHJA horse show.

RIDING NOT TO BE JUDGED is not permitted at any MHJA horse show. No horse is allowed to go without being judged.

As a courtesy to all, THE SHOW MANAGEMENT REQUESTS
THAT ALL COMPETITORS MAKE EVERY EFFORT TO BE AT
THEIR CLASSES IN A TIMELY FASHION.

CONCESSIONS: Water to be provided by show ring.

ORDER OF GO: May be posted for Classic and Derbies. If a class is added after the order of go is posted, the entry will go first.

HORSE SHOW INFORMATION

SCRATCHING & ADDING CLASSES:

Scratched Horses: Horses scratched from the show before the closing date will receive a full refund.

Horses scratched after the closing date will be charged the stall fee and the services fee.

Service Fee: All horses, showing or non-showing, will be assessed a fee of \$50. This includes Office, Medic, Night Watch, & Supervised Schooling Fees

You must **ADD/SCRATCH IN THE SHOW OFFICE BEFORE** the class begins. \$15 penalty for each class-ridden without entering, scratching, or adding.

PARKING: We ask you to cooperate to keep designated spaces free of cars, trucks, and trailers. This is for your safety and that of your children and your horses.

SECURITY & MEDICS: Emergency Medical Support will be on the show grounds during the show and all published schooling hours. Night Check is not available.

ALL DOGS MUST BE ON A LEASH!

MOTORIZED VEHICLE STATEMENT Minors who do not have a valid driver's license, which allows them to operate a motorized vehicle in the state in which they reside, will not be permitted to operate a motorized vehicle of any kind, including, but not limited to, golf carts, motorcycles, scooters, or farm utility vehicles, on the grounds.



**Mississippi Hunter Jumper
Association 2025 Membership
Application Form**

NAME _____

BIRTHDATE (if under 18) _____

ADDRESS _____

CITY _____ STATE _____ ZIP _____

PHONE _____

EMAIL _____

DATE FORM COMPLETED/SUBMITTED _____

The completed form must be mailed to MHJA, emailed to mhjaboardsec@gmail.com, or received in person by the MHJA Show Secretary, along with payment.

_____ **INDIVIDUAL MEMBERSHIP \$40 Annually (PayPal 41.20)**

_____ **FAMILY MEMBERSHIP \$65 Annually (PayPal \$66.95)**

Parents/Guardians and their children, if eligible to compete as juniors.

Please list all FAMILY members & birthdates for junior riders.

1. _____	DOB ____/____/____
2. _____	DOB ____/____/____
3. _____	DOB ____/____/____
4. _____	DOB ____/____/____

The Membership Form and payment must be received for the application to be complete. Payment may be made by cash, check, or PayPal (misshunterjumperassoc@gmail.com).
PayPal payments should be submitted with a 3% processing fee.

MHJA Points Eligibility: The rider and Owner must be members of MHJA during the competition.

Year End Awards Eligibility: Rider (Equitation) or Horse (Hunters/Jumpers) must have competed at one MHJA sponsored show in the applicable year.



We are proud to sponsor the \$2,000 Non-Pro Hunter Derby. Best of luck to all riders!

For over 20 years, our family-owned dealerships have served our Mississippi clients, providing them with graceful and powerful automobiles, just like your Hunters and Jumpers. Come take a look at our cars in Ridgeland, MS and in Collierville, TN.

LUXURY CARS AT VOLUME PRICES



Mercedes-Benz
of Jackson

455 Steed Road
Ridgeland, MS
MercedesOfJackson.com



Mercedes-Benz
of Collierville

4651 S. Houston Levee Rd.
Collierville, TN
MBCollierville.com

THE ULTIMATE FITNESS EXPERIENCE, DELIVERED IN A LUXURIOUS ATMOSPHERE

- RACQUET SPORTS
- KIDS' CLUB
- PERSONAL TRAINING
- RESORT POOL
- STUDIO FITNESS
- AND SO MUCH MORE!

the
Club
at The Township

340 Township Ave. Ridgeland, MS 39157
601-856-0668





CADENCE
Bank

***Best of luck
to all riders!***

CadenceBank.com

© 2023 Cadence Bank. All Rights Reserved.
Member FDIC. Equal Opportunity Lender.

MHJA DIVISION SPECIFICATIONS

Fence heights listed below apply to MHJA sponsored Horse Shows. At a USEF rated show, fences will be set to meet USEF division specifications.

HUNTER DIVISIONS

Points toward annual awards will be given in the following sections except where indicated:

SHORT STIRRUP HUNTER – Open to horses and ponies ridden by riders twelve (12) years and under. A rider may not compete at the same show in any class where fences exceed 2'3". Fences 18"–2'. Riders may cross enter in their age group equitation.

LONG STIRRUP HUNTER – Open to horses and ponies ridden by riders over twelve (12) years of age. A rider may not compete at the same show in any class where fences exceed 2'3". Fences 18"–2'.

MHJA CHILDREN'S PONY HUNTER - Open to ponies ridden by a junior rider. USEF age rules apply. MHJA Children's Pony Hunter will be held as two sections according to pony size. Sections with less than three ponies will be combined. Pony/Rider combinations competing in MHJA Children's Pony Hunter are not eligible for Regular Pony Hunter at the same show. Pony riders who compete in Children's Pony Hunter, Green Pony Hunter, or Regular Pony Hunter classes at affiliated shows will receive points in the appropriate MHJA Pony Hunter height section. Fences 2' for small and medium ponies, 2'6" for large ponies.

2'3" MHJA SMALL PONY HUNTER - Open to ponies ridden by a junior rider. USEF age rules apply. Small ponies to measure under 12.2 h. Sections with less than three ponies will be combined. Pony/Rider combinations competing in MHJA Small Pony Hunter are not eligible for Children's Pony Hunter at the same show. Pony riders who compete in Children's Pony Hunter, Green Pony Hunter, or Regular Pony Hunter classes at affiliated shows will receive points in the appropriate MHJA Pony Hunter height section.

2'6" MHJA MEDIUM PONY HUNTER - Open to ponies ridden by a junior rider. USEF age rules apply. Medium ponies to measure 12.2 h – 13.2 h. Sections with less than three ponies will be combined. Pony/Rider combinations competing in MHJA Medium Pony Hunter are not eligible for Children's Pony Hunter at the same show. Pony riders who compete in Children's Pony Hunter, Green Pony Hunter, or Regular Pony Hunter classes at affiliated shows will receive points in the appropriate MHJA Pony Hunter height section.

3' MHJA LARGE PONY HUNTER - Open to ponies ridden by a junior rider. USEF age rules apply. Medium ponies to measure 13.2 h 14.2 h. Sections with less than three ponies will be combined. Pony/Rider combinations competing in MHJA Large Pony Hunter are not eligible for Children's Pony Hunter at the same show. Pony riders who compete in Children's Pony Hunter, Green Pony Hunter, or Regular Pony Hunter classes at affiliated shows will receive points in the appropriate MHJA Pony Hunter height section.

PRE-CHILDREN'S HUNTER – Open to any junior rider on a horse or pony. A horse/rider combination may not compete at the same show in any class where fences exceed 2'9". Fences 2'6".

PRE-ADULT HUNTER – Open to any adult amateur rider on a horse or pony. A horse/rider combination may not compete at the same show in any class where fences exceed 2'9". Fences 2'6".

MODIFIED CHILDREN'S HUNTER – Open to any junior on a horse or pony. A rider may not compete at the same show in any class where fences exceed 3'. Fences 2'9".

MODIFIED ADULT HUNTER – Open to any adult amateur on a horse or pony. A rider may not compete at the same show in any class where fences exceed 3'. Fences 2'9".

BABY GREEN HUNTER – Open to horses and ponies in their FIRST or SECOND year of showing. Open to horses that have not shown 3' or higher. Fences 2'6".

2' UNRESTRICTED HUNTER- Open to all horses and riders. No restrictions. Specs for USHJA 2' Divisions apply. No points or year-end awards will be awarded for this section. Fences 2'.

2' OPEN HUNTER - Open to all horses and riders. Specs for USHJA 2' Divisions apply. Fences 2'

2'3" OPEN HUNTER - Open to all horses and riders. Specs for USHJA 2'3" Divisions apply. Fences 2'3"

2'6" OPEN HUNTER - Open to all horses and riders. Specs for USHJA 2'6" Divisions apply. Fences 2'6"

GREEN HUNTER 3' & 3'3" - Open to horses and ponies in their first (3') or second (3'3") year of showing in the division. Horses cannot jump higher than 3'6" at any show. Fences 3' and 3'3"

3'6" GREEN HUNTER - Horses are eligible in their 1st and 2nd year of jumping 3'6" or higher. Fences 3'6".

PERFORMANCE HUNTER - 3' & 3'6" Open to all horses and riders. Fences 3' and 3'6" as entered.

CHILDREN'S HUNTER - Open to horses and ponies ridden by a junior rider. Horse/Rider may not cross-enter in classes exceeding 3'3". Fences 3'.

ADULT AMATEUR HUNTER – Open to horses and ponies ridden by an amateur rider. Horse/Rider may not cross enter in classes exceeding 3'3 Fences 3'.

JUNIOR HUNTER– Open to horses ridden by a junior. Junior Hunter 3'3" and 3'6" will be combined for year-end awards. Fences 3'3" or 3'6".

AMATEUR OWNER HUNTER - Open to horses ridden by an amateur rider. The horse must be owned by the rider, or a member of the rider's family. AO Hunter 3'3" and 3'6" will be combined for year-end awards. Fences 3'3" or 3'6".

EQUITATION CLASSES

Points toward annual awards will be given in the following sections, separately on the flat and over fences:

SHORT STIRRUP EQUITATION – Flat and Over Fences - open to riders twelve (12) years of age and under. The rider is not eligible for any other classes at the same show where the fences exceed 2'3". No testing. Fences 18"-2'.

LONG STIRRUP EQUITATION – Flat and Over Fences - open to riders over twelve (12) years of age. The rider is not eligible for any other classes at the same show where the fences exceed 2'3". Fences 18"-2'.

PRE-CHILDREN'S EQUITATION - Open to junior riders. A rider may not compete at the same show in any class where fences exceed 2'9". Fences 2'6".

PRE-ADULT AMATEUR EQUITATION – Open to amateur riders. A rider may not compete at the same show in any class where fences exceed 2'9". Year-end awards for flat and over fences. Fences 2'6".

AGE GROUP EQUITATION – Age groups may be combined if there are fewer than 3 entries in any section. Fences and tests at the level indicated for each age group; points to be awarded in the appropriate age group for annual awards.

EQUITATION 11 & UNDER – Flat and Over Fences. Tests 1-8. Fences 2'3".

EQUITATION 12-14 – Flat and Over Fences. Tests 1-13. Fences 2'6"- 2'9".

EQUITATION 15-17 – Flat and Over Fences. Tests 1-16. Fences 3'.

ADULT AMATEUR EQUITATION – Flat and Over Fences. Open to amateur riders. Tests 1-16. Fences 3'.

MISSISSIPPI HUNTER JUMPER ASSOCIATION HORSE MEDAL

Open to junior and amateur members of the MHJA. Application for membership must be made and membership fee paid before entering the class. Class requirements are similar to the THIS and ARIAT 3' Medal Classes. Points determine those eligible for competing in the MHJA Horse Medal Final Class. Tests 1–16. Fences 3'. Horses may not compete at the same show in classes where fences exceed 3'3".

MISSISSIPPI HUNTER JUMPER ASSOCIATION 2'6" MEDAL

Open to junior and amateur members of the MHJA. Application for membership must be made and membership fee paid before entering the class. Class requirements are similar to the MHJA horse medal. Points determine those eligible for competing in the MHJA 2'6" Medal Final Class. Tests 1–13. Fences 2'6". Horses may not compete at the same show in classes where fences exceed 2'9".

MISSISSIPPI HUNTER JUMPER ASSOCIATION PONY MEDAL

Open to junior riders on ponies who are members of the MHJA. Application for membership must be made and membership fee paid before entering the class. Class requirements are the same as for the USEF Pony Equitation Classes except that only three riders must enter and complete the course.

Riders may continue to compete after winning a medal since points determine those eligible for competing in the MHJA Pony Medal Final Class. Tests 1–9. Fences 2' for small and medium ponies, 2'6" for large ponies.

MHJA MEDAL FINALS – All riders receiving points in MHJA Pony Medal, MHJA 2'6" Medal, and Horse Medal classes during the show year shall be considered eligible for the MHJA Medal Final classes. No Entry Fee. MHJA Medal Final classes to be held at the last MHJA sponsored show of the show year.

MHJA ACADEMY - MHJA Academy classes are open to beginner riders who have not jumped higher than 2' at any horse show. Riders may not cross enter into any other classes at a horse show where they compete in the MHJA Academy classes, except age equitation flat only classes. To be judged on equitation, emphasis on safety and control.

WALK/TROT - riding on the flat at the walk and trot.

WALK/TROT/CANTER – riding on the flat at all three gaits

TROT X RESTRICTED– Trot a course of cross rails. Only riders who have never cantered a course in competition are eligible for restricted Trot X.

TROT X- Trot a course of cross rails.

X to VERTICAL – Trot X and canter out over vertical. (****LHJA MINI STIRRUP)

MHJA MINI STIRRUP – Riders on horses or ponies canter a course of six to eight jumps. Not to exceed 12" in height.

PRE-LONG/ SHORT STIRRUP- Canter a course. Fences 18". Riders in these classes are not eligible to compete in Walk/Trot, Walk/Trot/Canter, and Trot X.

JUMPER DIVISIONS

Points toward annual awards will be given in the following sections:

HOPEFUL JUMPER – Open to any horse or pony/ rider combination who does not jump higher than 1m at the same show. Fences- .75m. Points will be recognized at affiliated shows where fences are 0.75m in height; only one division will be recognized.

LOW SCHOOLING JUMPER – Open to all riders on horses and ponies. 0.85-0.90m. Points will be recognized at affiliated shows where fence heights are 0.85m – 0.90m; only one division will be recognized.

HIGH SCHOOLING JUMPER – Open to all riders on horses. 1m. Points will be recognized at affiliated shows where fence heights are 1-1.10m, but only one division of the same name will be recognized.

CHILD/ADULT AMATEUR JUMPER – Open to horses or ponies ridden by a junior or adult amateur rider.1.00m.

OPEN 1.15M JUMPER – Open to all riders on horses. 1.15m.

JUNIOR/AMATEUR JUMPER – Open to horses ridden by a junior or amateur rider. 1.15m.

JUMPER HEIGHTS

0.70 m = Fences 2'3" in height	1.20 m = Fences 3'11" in height
0.75 m = Fences 2'5" in height	1.25 m = Fences 4'1" in height
0.80 m = Fences 2'7" in height	1.30 m = Fences 4'3" in height
0.85 m = Fences 2'9" in height	1.35 m = Fences 4'5" in height
0.90 m = Fences 2'11" in height	1.40 m = Fences 4'7" in height
0.95 m = Fences 3'1" in height	1.45 m = Fences 4'9" in height
1.00 m = Fences 3'3" in height	1.50 m = Fences 4'11" in height
1.05 m = Fences 3'5" in height	1.55 m = Fences 5'1" in height
1.10 m = Fences 3'7" in height	1.60 m = Fences 5'3" in height
1.15 m = Fences 3'9" in height	

At all heights, to qualify as a spread fence, the fence must be 5 cm (2") up to 15 cm (6") wider than the height. At least three out of the eight efforts must be spreads. (see JP122.6). Any full-width square oxer may be set 5 cm (2") lower than the height indicated.

CHLOE PALATO
MTM UNLIMITED



Wishing you all the best!
Love, Mom and Cheyenne



WISHING

Stella & Holly *Amelia & Luna*

A SUCCESSFUL
SHOW SEASON!



BROCK,
HAVE A
FANTASTIC
2025

MHJA SHOW YEAR!

Special Classes

\$2,000 Hunter Derby

Sponsored by



**Mercedes-Benz
of Jackson**

Class: 280 Entry Fee: \$150

Prize Money: \$600, \$400, \$300, \$220, \$180, \$140, \$100, \$60

Places through 8th place

Open to amateur non-pro riders. To be eligible, ALL derby horses must be entered in at least two classes at this show.

The order of go will be decided by show management. Round One is to be shown over a classic hunter-type course. To include three high-option jumps. To be judged on style and brilliance. Each horse will receive a numerical score for the first round.

If available, a minimum of 12 horses will return for Round Two, the Handy Hunter course. To include one required Handy option. To include a minimum of two high option jumps. To be judged on style, brilliance, and handiness.

In addition, one extra point will be added to the score for each high option jumped without major faults. Numeric round scores and option jump points will be announced separately.

Round one and two scores will be combined to determine Final Derby placings. Fences at 2', 2'6", and 3'

Special Classes

\$500 Equitation Challenge

Sponsored by



Class: 390 Entry Fee: \$50

Prize Money: \$150, \$100, \$75, \$55, \$45, \$35, \$25, \$15

Places through 8th place

Non-Pro Equitation Challenge. Open to riders Short Stirrup up. To be judged at the walk, trot, and canter. Test 1 through 22 at the judge's discretion.

Special Classes

\$500 Jumper Classic

Sponsored by



Class: 450 **Entry Fee: \$50**

Prize Money: \$150, \$100, \$75, \$55, \$45, \$35, \$25, \$15

Places through 8th place

Open to junior and amateur non-pro riders. To be eligible for the Jumper Classic, horse must be entered in at least two jumper classes at this show.

Third class of division will be scored as the classic round. Judged at competitor's respective height. Score will be transposed. A minimum of 10 entries or prize money may be changed.

Special Classes

\$500 Hunter Classic

Sponsored by



Class: 250 **Entry Fee: \$50**

Prize Money: \$150, \$100, \$75, \$55, \$45, \$35, \$25, \$15

Places through 8th place

Open to all horses and ponies competing in Ring 1 Saturday. Entry must be entered in at least two classes at this show. The first round of the classic will be scored during the second round over fences of the division. The second round of the classic must be completed immediately following the first round. A minimum of 10 entries or prize money may be changed.

In addition, one extra point will be added to the score for each high option jumped without major faults. Numeric round scores and option jump points will be announced separately.

Round one and two scores will be combined to determine Final Derby placings. Fences at 2', 2'6", and 3'

Special Classes

\$750 Gamblers Choice

Sponsored by

EJ Equisports

Class: 470 Entry Fee: \$50

Prize Money: \$250, \$150, \$125, \$100, \$75, \$50, \$0, \$0

Places through 8th place

Parents & Ponies

Class: 230 Entry Fee: \$0

Prize: Ribbons

Super Bowl Soup Dinner to Follow

This is a parent leadline class where non-equestrian parents (or other adult family members) ride their child's horse while the child leads the horse

Soups provided by the barns will be served during the parent lead line class.

Good Luck
Reese &
Parachute!



SOUTHERN
WOMEN'S HEALTH



GOOD
LUCK

Ella &
ANDY

IN 2025!

Good
Luck
Lauren!

*Love,
Mom, Dad
and Jake*



BLACKSTON CONSULTING PLLC

a business consulting and health law firm

1900 Petit Bois Street North | Jackson, MS 39211

601.955.3223 | blackstonconsulting.com

@blackstonconsulting | [Blackston Consulting PLLC](#)



GOOD
LUCK
LILY &
JUNO!

Love,

Mom and Dad



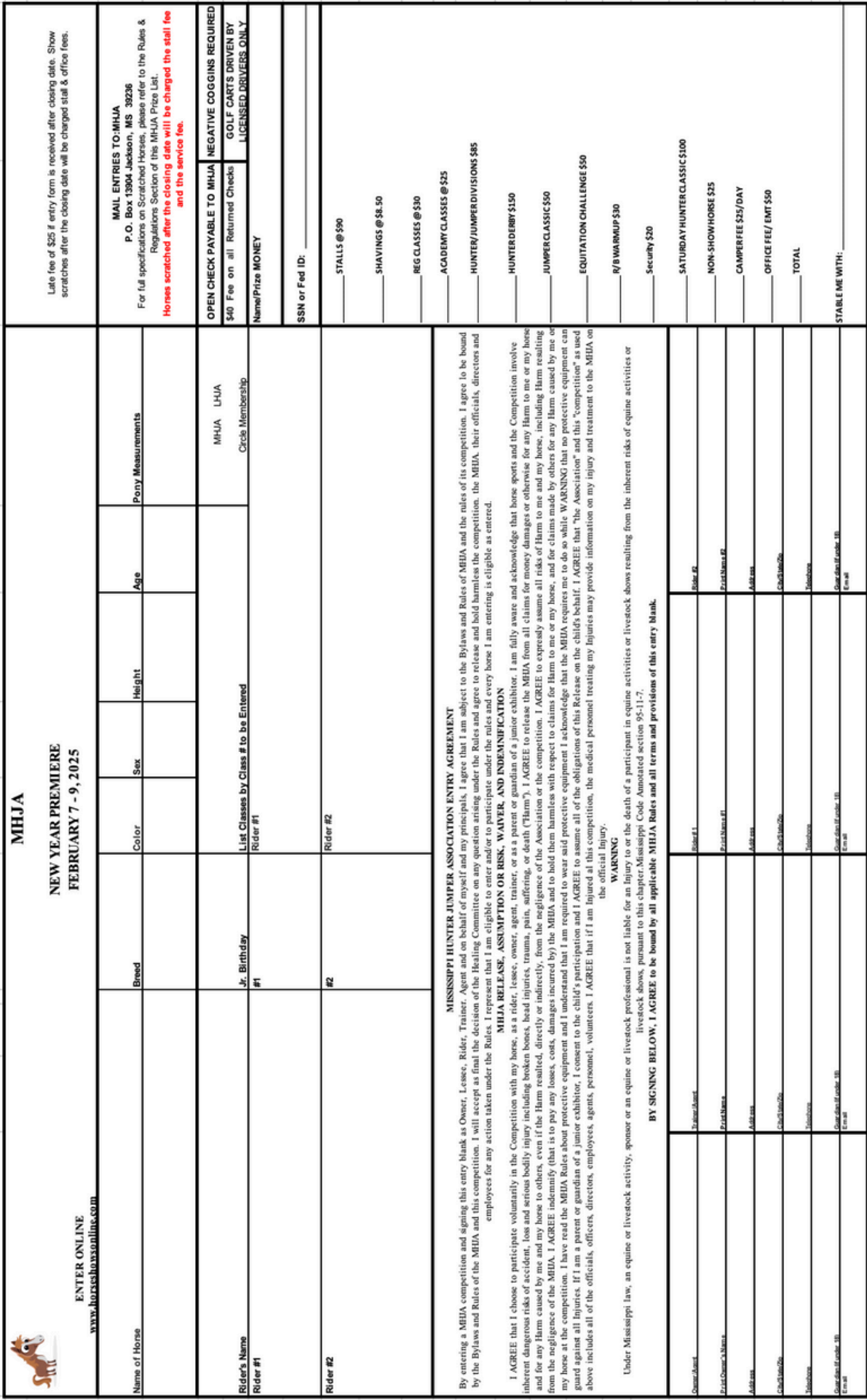
SONES & WHITE



Best wishes on your first "Big Girl" show season, Lyndsey and Brittanya
Love all of Team Blackston



Meagan Nusz Moore
713 416 3598



SHOW SCHEDULE

Friday Ring 1: 9:00 A.M.

(Schooling 7:00-8:30)

710. B/R All Day Hunter Warm-up

Blue 75+, Red 70-74

105. Friday Open Hunter 2' O/F

106. Friday Open Hunter 2' O/F

107. Friday Open Hunter 2' U/S

108. Friday Open Hunter 2' 3" O/F

109. Friday Open Hunter 2' 3" O/F

110. Friday Open Hunter 2' 3" U/S

101. Open Hunter 2' 6" O/F

102. Open Hunter 2' 6" O/F

103. Open Hunter 2' 6" U/S

111. Baby Green O/F 2'6"

112. Baby Green O/F 2'6"

113. Baby Green U/S

117. Green Hunter 3' & 3' 3" O/F

118. Green Hunter 3' & 3' 3" O/F

119. Green Hunter U/S

131. Performance Hunter O/F 3' & 3' 6"

132. Performance Hunter O/F 3' & 3' 6"

133. Performance Hunter U/S

121. Green Hunter 3' 6" O/F

122. Green Hunter 3' 6" O/F

123. Green Hunter U/S

470. \$750 Gambler's Choice

COURSE CHANGE

Ring 2

(7:00-8:00 Lunging ONLY)

(8:30-End of Ring 1- Ring 1 Schooling)

(End of Ring 1- Lunging ONLY, 30 min)

(End of Lunging- Jumpers Start-

Academy Schooling ONLY)

(Ring 1 Jumpers Start- Jumper School ONLY)

(End of Jumpers- Lunging ONLY, 20 min)

(End of Lunging- Academy Schooling ONLY)

*Times for show, schooling and lunging may be altered, changed or combined at management's discretion.

Friday Ring 1: continued...

*There will be a 45 min schooling break. before the start of jumpers.

401. Open Clear Round Warm-up (Open card all day)

404. Hopeful Jumper .75m

405. Hopeful Jumper

406. Hopeful Jumper

411. Low Schooling Jumper .85-.90m

412. Low Schooling Jumper

413. Low Schooling Jumper

415. High Schooling Jumper 1.0-1.10m

416. High Schooling Jumper

417. High Schooling Jumper

421. Child/Adult Jumper 1.0m

422. Ch/Ad Jumper

423. Ch/Ad Jumper

431. Open Jumper 1.15m

432. Open Jumper

433. Open Jumper

441. Jr/Am Jumper 1.15m

442. Jr/Am Jumper

443. Jr/Am Jumper

450. \$500 The Club at the Township Jumper Classic

*The third class of each jumper division will also count as Classic round if entered in the jumper classic.



SHOW SCHEDULE

Saturday. Ring 2: 8:00 AM

(6:30-6:45 Lunging ONLY)

(6:45-7:45 Schooling)

580. B/R All Day Academy

Warmup. Blue 75+, Red 70-74

501. Walk/Trot

502. Walk/Trot

503. Walk/Trot

504. Walk/Trot/Canter

505. Walk/Trot/Canter

506. Walk/Trot/Canter

511. Restricted Trot X's

512. Restricted Trot X's

513. Restricted Trot Flat

521. Trot X's

522. Trot X's

523. Trot X s Flat

(Canter X's Schooling ONLY, 20 min)

524. Canter X's

525. Canter X s

526. Canter X's Flat

500. Lead Line

Saturday. Ring 1: 9:20 AM

(6:30-8:00 Schooling)

(8:00-8:30 Lunging ONLY)

(9:00-9:20 Open & SS School ONLY)

720. B/R All day Hunter Warmup

Blue 75+, Red 70-74

350. 2' Mini Medal

201. 2' Sat Open Hunter Unrestricted

202. 2' Sat Open Hunter Unrestricted

203. 2' Sat Open Hunter Unrestricted

204. Short Stirrup Hunter O/F 18'- 2'

205. Short Stirrup Hunter O/F 18"- 2'

206. Short Stirrup Hunter U/S

(Lg Strp Schooling ONLY, 20 mi



Saturday Ring 1: continued...

207. Long Stirrup O/F 18"- 2'

208. Long Stirrup O/F 18'- 2'

209. LongStirrup U/S

(Ch Pony Schooling ONLY IF needed)

360. MHJA Pony Medal

141. Children's Pony Hunter O/F 2'2'6"

142. Children Pony Hunter O/F 2'2'6"

143. Children's Pony Hunter U/S

144. Small Pony Hunter O/F 2'3"

145. Small Pony Hunter O/F 2'3"

146. Small Pony Hunter U/S

147. Medium Pony Hunter O/F 2'6"

148. Medium Pony Hunter O/F 2'6"

149. Medium Pony Hunter U/S

150. Large Pony Hunter O/F 2'9"

151. Large Pony Hunter O/F 2'9"

152. Large Pony U/S

390. \$500 Cline Tours Equitation Challenge

161. Pre-Child Hunter O/F 2'6"

162. Pre-Child Hunter O/F 2'6"

163. Pre-Child Hunter U/S

165. Pre-Adult Hunter O/F 2'6"

166. Pre-Adult Hunter O/F 2'6"

167. Pre-Adult Hunter U/S

171. Mod. Child/Adult Hunter O/F 2'9"

172. Mod. Child/Adult Hunter O/F 2'9"

173. Mod. Child/Adult Hunter U/S

370. MHJA & LHJA Horse Medal 3'

181. Children's Hunter O/F 3'

182. Children's Hunter O/F 3'

183. Children's Hunter U/S

184. Adult Am Hunter O/F 3'

185. Adult Am Hunter O/F 3'

186. Adult Am Hunter U/S

191. Junior Hunter/AO O/F 3'3"/3'6"

192. Junior Hunter/AO O/F 3'3"/3'6"

193. Junior Hunter/ AO U/S

250. \$500 Cadence Bank Hunter Classic

230. Parents & Ponies

*Times for show, schooling and lunging may be altered, changed or combined at management's discretion.

SHOW SCHEDULE

Sunday. Ring 1; 8 A.M.

(6:30-7:30 Course open for Walking and Hand Walking ONLY)

280. \$2,000 MERCEDES-BENZ of Jackson Hunter Derby

COURSE CHANGE

(3' Schooling ONLY, 15 min)

730. BIR All day Eq Warmup, Blue 75+, Red 70-74

325. Adult Am Eq O/F 3'

326. Adult Am Eq Flat

315. 15-17 Eq O/F 3'

316. 15-17 Eq Flat

(2'6 Schooling ONLY, 20 min)

380. MHJA 2'6 Medal

313. 12-14 Eq 2'6"

314. 12-14 Eq Flat

321. Pre-Child Eq O/F 2'6"

322. Pre-Child Eq Flat

323. Pre-Adult O/F 2'6"

324. Pre-Adult Eq Flat

(2'3 Schooling ONLY, 20 min)

311. 11 and under Eq O/F 2'3"

312. 11 and under Eq Flat

(SS/LS Schooling ONLY, 20 min)

301. Short Stirrup Eq O/F 18"- 2'

302. Short Stirrup Eq Flat

305. Long Stirrup Eq O/F 18"- 2'

306. Long Stirrup Eq Flat

Sunday. Ring 2:

*Ring 2 schooling & classes to start after Hunter Derby

(6:30-7:00 Lunging ONLY)

(7:00-7:30 Schooling)

(7:30-End of Derby- Derby School ONLY)

(End of Derby- Lunging ONLY, 20 min)

(X-Vertical Schooling ONLY, 25 min)

590. B/R All Day Academy Warmup

75+ Blue, 70-74 Red

531. X-Vertical O/F 12"

532. X-Vertical O/F 12"

533. X-Vertical Flat

(Mini & Pre-SLS School ONLY, 20 min)

541. Mini Stirrup O/F 12"

542. Mini Stirrup O/F 12"

543. Mini Stirrup Flat

551. Pre-Short/Long Stirrup O/F 18"

552. Pre-Short/Long Stirrup O/F 18"

553. Pre-Short/Long Stirrup Flat



*Times for show, schooling and lunging may be altered, changed or combined at management's discretion.

Wishing Lydia & Belino Good Luck in 2025!



Good luck Onyx Blackston, Amanda, Meagan, and all of
Team CalNemo!
Love, Lynds and Joe



Bridles & Britches



***“The Tack Shop to Fill
All Of Your Equestrian
Needs”***

**13232 Hwy 40
Folsom, LA 70437
(985) 796-0780**

**www.bridlesandbritches.com
Shop online now!**



~~Competition~~

~~Recognition~~

~~Respect~~

Do it for the

LOVE
LOVE

of it...

Blue Ribbon Riding Academy

Trainer: Fontaine Bowie 601-942-0626

439 E Sowell Rd ~ 601-842-0564

www.BlueRibbonRidingAcademy.com



Good luck,
Adelynn!



Magnolia
Jewelers



1416 WASHINGTON STREET

VICKSBURG, MS 39180

601-429-0074

SADLER GRANITE WORKS
WWW.SADLERGRANITE.COM

Mississippi Hunter Jumper

Association Sponsors

Mercedes Benz of Jackson
\$2,000 Hunter Derby

M&M Services
Short Stirrup Hunter

EJ Equiports
\$750 Gamblers Choice

Miskelly Furniture
Pre-Adult Hunter

The Club at the Township
\$500 Jumper Classic

Highland Endodontics
Children's Hunter

Cadence Bank
\$500 Hunter Classic
Short Stirrup Equitation

The Palato Family
Long Stirrup Hunter

Cline Tours
\$500 Equitation Challenge

ALL DAYS - JUMP SPONSORS

Thank you to our Jump Sponsor(s)

Sones & White
Equitation 12 - 14

Madison Premier

Leigh & Ben Edwards
MHJA Pony Hunter

CalNemo Equestrian, LLC

Magnolia Jewelers



Membership Information

The horse show year runs from December 1 to November 30
JOIN NOW for 2025 if you want your points earned at this
show. Points only count if you join before the end of the
show.

MHJA members must attend two MHJA
sponsored or affiliated shows to be eligible
for year-end awards. At least one of these
must be an MHJA-sponsored show at the
Canton Multipurpose and Equine Center.

Membership fees can be added to your show bill.

Check the MHJA website for all MHJA
affiliated shows www.mhja.ms





**TO ST. ANDREWS, WINTERVIEW FARM, & JACKSON ACADEMY EQUESTRIAN
IEA TEAMS FOR YOUR OUTSTANDING SHOW SEASON!**

COACHES: PATTI SHOEMAKER. MEGHAN ROIDER HUMPHRIES. BRITTANY SHORT.

**AUSTIN MURAD.
140 SPRING RD FLORA MS 39072
601-260-5494**

Mississippi Hunter Jumper Association
Post Office Box 13904
Jackson, MS 39236-3904

