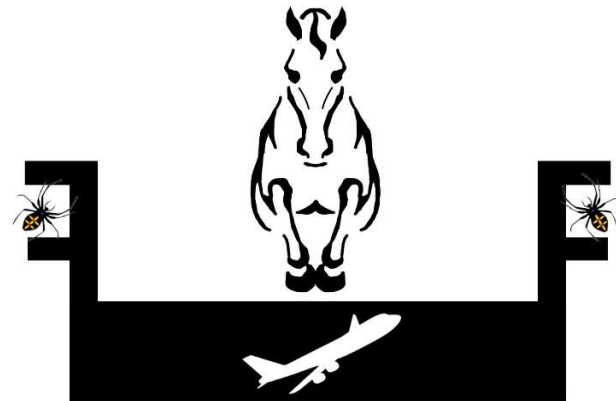




Stephanie Santos
6 Mockingbird Rd.
Covington, LA 70433

**FREQUENT FLIER EQUESTRIAN SERVICES
PRESENTS THE 25TH ANNUAL
HALLOWEEN HORSE SHOW
AT HITCH STABLES**



Oct 25-27, 2024

Stall Payments and Entries

DUE Sunday October 13, 2024

\$1000 Mike McReynolds Memorial Hunter Derby 3'

\$1000 Trick or Treat Derby 2'6"

\$1000 DeSalvo Family Memorial Derby 2'3", 2'

Hunter, Jumper, & Equitation Classics

Mini Stirrup Equitation Classic

Costume Contest

Over \$6,800 in total Prize Money

www.horseshowing.com

LHJA and MHJA recognized

Halloween Horse Show Officials

Judges:	Kirsten Murphy, Vandiver FL Kathleen Stamps, Oxford GA Ginger Black Ft. Worth, TX
Beginner Ring	Jeanne Pitre Folsom, LA
Show Manager:	Stephanie Santos 983-789-2208
Paddock Masters:	Mesha Steib Lesli Mitchell Will Mitchell Dee Mooney
Announcer:	Andrew Brown Glasgow, VA
Secretary:	Stephanie Santos (983)789-2208 Chantel Hisaw
Hitch Stables 27460 Polo Rd. Folsom, LA 70437	
A negative coggins test must be presented before numbers will be issued. Coggins must be valid according to the laws of Louisiana. No one may ride in any class or schooling area without a hard hat. When mounted, all riders must wear protective headgear in accordance with current USEF rules.	
First through eighth place ribbons awarded in each class. Champion & Reserve Champion awarded in each division that fills. Starred Jumper Classes will be Bonus points classes.	
Join Us Saturday Evening for the Costume Class!!! Sunday	
Costume Class Placed 1 st - 4 th for	

SUNDAY SCHEDULE

Ring 1 8:30 AM- Derby Day Donut Breakfast

NO SCHOOLING -All Derbies walk 6:45-8:00 AM

145. \$1,000 Mike McReynolds Memorial Hunter Derby
Open to all horses. The order of go will be a blind draw that will be posted at the ring Saturday evening. Round one will be shown over a hunter classic type course. To include three high option jumps at 3'5". Each horse will receive a numerical score based on style and brilliance. The top twelve horses will be invited back for the handy hunter course. Handy course will include at least one handy obstical and two high option fences. Judged on style, brilliance, and handiness. In addition, a maximum of ten bonus points for handiness of second round. Option fences will have one point added for each taken. Base round scores, option points, and handy points will be announced. Round one and Handy round will be individually placed, and scores added to determine overall derby placing.

~NO ADDS OR SCRATCHES IN THIS DERBY ONCE IT STARTS~

A minimum of 12 horses must be entered by 4:00 pm on Saturday

146. LEAD LINE NO ENTRY FEE (Must be entered in Office)

\$1,000 Sharon DeSalvo Memorial Hunter Derby

147a. 2' 147b. 2'3"

148. \$1,000 2'6" Trick or Treat Hunter Derby

Classes 147 & 148a/b open ONLY to non-pro riders entered and showing at this show in Short Stirrup, Long Stirrup, Novice, Pre-Child/Adult, Limit Rider, Children's Pony, Modified Child/Adult Hunter, Open 2'-2'9", Bayou or Hopeful Jumper. Riders are not eligible if they have shown 3' and over at this show. Specs are otherwise the same as those listed for the Mike McReynolds Derby. Option fences will be 3" higher than height selected to show. The order of go will be a blind draw that will be posted the night before.

~NO ADDS OR SCRATCHES IN THIS DERBY ONCE IT STARTS~

A minimum of 12 horses must be entered by 4:00 pm on Saturday

Ring 2 7:30 AM

- | | |
|------|---------------------------------------|
| 149. | SS/LS Warm-Up |
| 150. | Short Stirrup Hunter 2' |
| 151. | Short Stirrup Hunter 2' |
| 152. | Short Stirrup Hunter U/S |
| 153. | Long Stirrup Hunter 2' |
| 154. | Long Stirrup Hunter 2' |
| 155. | Long Stirrup Hunter U/S |
| 156. | Novice Warm-Up |
| 157. | Novice Hunter 2'3" |
| 158. | Novice Hunter 2'3" |
| 159. | Novice Hunter U/S |
| 160. | Pre-Ch/Ad Warm-Up |
| 161. | Pre-Adult Hunter 2'6" |
| 162. | Pre-Adult Hunter 2'6" |
| 163. | Pre-Adult Hunter U/S |
| 164. | Pre-Childrens Hunter 2'6" |
| 165. | Pre-Childrens Hunter 2'6" |
| 166. | Pre-Childrens Hunter U/S |
| 167. | Limit & Childrens Pony Warm-Up |
| 168. | Limit Rider Hunter 2'6" |
| 169. | Limit Rider Hunter 2'6" |
| 170. | Limit Rider Hunter U/S |
| 171. | Pony Medal |
| 172. | Childrens & MHJA Hunter Pony 2'6", 2' |
| 173. | Childrens & MHJA Hunter Pony 2'6", 2' |
| 174. | Childrens & MHJA Hunter Pony U/S |

FRIDAY SCHEDULE

Attention Exhibitors:

1. A minimum of 12 entries are required in all prize money classes for full amount to be paid out.
2. Stalls are **non-refundable** after October 13, 2024.
3. Management reserves the right to close a ring at any time during official schooling for ring maintenance.

Official Schooling Schedule

- Thursday: All Rings 9:30 am-5:30 pm
 Friday: Jumper, Ring 1, and Ring 2 until 7:00am
 Saturday: Jumper, Ring 1, and Ring 2 until 7:00am
 Sunday: **NO SCHOOLING in Ring 1**, Ring 2 until 7:00am

If time permits, schooling may be allowed for a brief period of time once ring schedule has completed

Check www.horseshowing.com each night for the most up to date ring information.

Please read all division specs before you enter.

All exhibitors may add classes at the ring, but **MUST ENTER IN OFFICE FIRST**, and get an **ADD SLIP**, Please!

Jumper Heights	
.65m- 2'1"	2'
.75m- 2'5"	2'6"
.80m- 2'7"	
.90m- 2'11"	3'
.95m- 3'1"	
1.05m- 3'5"	3'6"
1.10m- 3'7"	
1.15m- 3'9"	
1.20m- 3'11"	4'

Horse must show in at least one over fence class to be eligible for the Hunter undersaddle of that division.
 Except for Open Hunter and Equitation divisions

Check counts, estimated class times, and orders of go at www.horseshowing.com

Jumper Ring 8:30

1. Training Jumper II (blue ribbon clear)
2. Bayou Jumper .65m 2b
3. Bayou Jumper .65m 2d
4. Hopeful Jumper .75m 2b
5. Hopeful Jumper .75m 2d
6. Low Schooling .90m 2b
7. Low Schooling .90m 2.1
8. High Schooling 1.05m 2b
9. High Schooling 1.05m 2.1
10. Child/Adult 1.05m 2b
11. Child/Adult 1.05m 2.1
12. 1.15m Jumper 2b
13. 1.15m Jumper 2b.1

Ring 2 9:00 am

38. Hunter Warm-Up
 39. Open Hunter 2'6"
 40. Open Hunter 2'6"
 41. Open Hunter U/S
 42. Open Hunter 2'3"
 43. Open Hunter 2'3"
 44. Open Hunter U/S
 45. Open Hunter 2'
 46. Open Hunter 2'
 47. Open Hunter U/S
 48. \$500 Friday Ring 2 Hunter Classic
- No Scratches from the Classic once the Ring has started. Entering in the OFFICE will be allowed.

Ring 1 8:00

14. Hunter Warm-Up
15. Baby Green Hunter 2'6"
16. Baby Green Hunter 2'6"
17. Baby Green Hunter U/S
18. Open Hunter 2'9"
19. Open Hunter 2'9"
20. Open Hunter U/S
21. Green Hunter 3'/3'3"
22. Green Hunter 3'/3'3"
23. Green Hunter U/S
24. Performance Hunter 3'3"
25. Performance Hunter 3'3"
26. Performance Hunter U/S
27. \$500 Friday Ring 1 Hunter Classic

No Scratches from the Classic once the Ring has started. Entering in the OFFICE will be allowed at anytime.

28. Equitation Warm-Up
 29. LHJA Medal Class 3'
 30. MHJA Medal Class 3'
 31. Adult Amateur Equitation 3'
 32. Adult Amateur Equitation 3'
 33. Adult Amateur Equitation Flat
 34. 15-17 Junior Equitation 3'
 35. 15-17 Junior Equitation 3'
 36. 15-17 Junior Equitation Flat
 37. \$250 Ring 1 Non-Pro Eq Classic
- No Scratches from the Classic once the Ring has started. Entering in the OFFICE will be allowed at anytime.

Management reserves to right to change the schedule as entries warrant.

SATURDAY SCHEDULE

Jumper Ring 8:00 am

49. Training Jumper II
50. Bayou Jumper .65m 2d
51. \$250 Bayou Jumper .65m 2b*
52. Hopeful Jumper .75m 2d
53. \$250 Hopeful Jumper .75m 2b*
54. Low Schooling .90m 2c
55. \$250 Low Schooling .90m 2b*
56. High Schooling 1.05m 2c
57. High Schooling 1.05m 2b*^
58. Child/Adult 1.05m 2c
59. Child/Adult 1.05m 2b*^
60. 1.15m Jumper 2c
61. 1.15m Jumper 2b*^
62. \$250 Classic High, Child/Adult, & 1.15m Second Division (^)
Round will count as Classic
63. Addback .90m TEAM Relay 2d
A Pair of riders will be timed with a rider swap taking place between power and speed phases with faults accumulating. No rider restrictions

Ring 1 8:00 AM

64. Equitation Warm-Up
65. Mini Medal 2'6"
66. 12-14 Junior Equitation 2'6"
67. 12-14 Junior Equitation 2'6"
68. 12-14 Junior Equitation Flat
69. Open Equitation 2'9"
70. Open Equitation 2'9"
71. Open Equitation Flat
72. Hunter Warm-Up
73. Modified Ch/Ad 2'9"
74. Modified Ch/Ad 2'9"
75. Modified Ch/Ad U/S
76. Adult Hunter 3'
77. Adult Hunter 3'
78. Adult Hunter U/S

Ring 1 Continued

79. Childrens Hunter 3'
80. Childrens Hunter 3'
81. Childrens Hunter U/S
82. Junior/AO Hunter 3'3"
83. Junior/AO Hunter 3'3"
84. Junior/AO Hunter U/S
85. \$250 Ring 1 Non-Pro Equitation
Classic Hunter Division Riders may enter and the second division round will be scored for equitation.

Ring 2 7:30 AM

86. Equitation Warm-Up
87. Short Stirrup Equitation 2'
- 88 Short Stirrup Equitation 2'
89. Short Stirrup Equitation Flat
90. Long Stirrup Equitation 2'
91. Long Stirrup Equitation 2'
92. Long Stirrup Equitation Flat
93. Micro Medal 2'3"
94. 11 & Under Jr Eq 2'3"
95. 11 & Under Jr Eq 2'3"
96. 11 & Under Jr Eq Flat
97. Novice Equitation 2'3"
98. Novice Equitation 2'3"
99. Novice Equitation Flat
100. Pre-Adult Equitation 2'6"
101. Pre-Adult Equitation 2'6"
102. Pre-Adult Equitation Flat
103. Pre-Child Equitation 2'6"
104. Pre-Child Equitation 2'6"
105. Pre-Child Equitation Flat
106. \$500 Non-Pro Eq Classic
No Scratches from the Classic once the Ring has started. Entering in the OFFICE will be allowed at anytime.

COVERED RING SCHEDULE

Saturday Covered Ring 8:30

107. Sat Beginner over Trot X's
108. Sat Beginner over Trot X's
109. Sat Adv. Beginner over Trot X's
110. Sat Adv. Beginner over Trot X's
111. Sat Beginner W/T Flat
112. Sat Adv. Beginner W/T Flat
113. Sat Mini Stirrup Equitation
114. Sat Mini Stirrup Equitation
115. Sat Mini Stirrup Equitation Flat
116. Sat Pre-Short/Long Hunter 1'
117. Sat Pre-Short/Long Hunter 1'
118. Sat Pre-Short/Long U/S
119. Sat Trot Poles
120. Sat Trot Poles
121. Sat W/T Flat
122. Sat W/T Equitation Flat
123. Sat W/T Equitation Flat
124. Sat W/T Equitation Flat
125. Sat Walk Poles
126. Sat Walk Poles
127. Sat Walk/Halt Flat
- 175. Costume Class approx 5:45PM**

Please enter on entry blank and get Paper Entry form from Office once show Starts. Paper Form will need to be brought to Covered Ring at time of class.

Sunday Covered Ring 10:00

128. Sun Beginnner over Trot X's
129. Sun Beginnner over Trot X's
130. Sun Beginnner W/T Flat
131. Sun Adv. Beginner over Trot X's
132. Sun Adv. Beginner over Trot X's
133. Sun Adv. Beginner W/T Flat
134. Sun Mini Stirrup Equitation
135. Sun Mini Stirrup Equitation
136. Sun Mini Stirrup Equitation Flat
137. \$500 Mini Stirrup Eq. Classic
No Scratches from the Classic once the Ring has started. Entering in the OFFICE will be allowed at anytime.
138. Sun Pre-Short/Long Hunter 1'
139. Sun Pre-Short/Long Hunter 1'
140. Sun Pre-Short/Long Hunter U/S
141. Sun Trot Poles
142. Sun Trot Poles
143. Sun W/T Flat
144. Sun Walk Poles
145. Sun Walk Poles
146. Sun Walk/Halt Flat

147. Sun W/T Equitation Flat
148. Sun W/T Equitation Flat
149. Sun W/T Equitation Flat

Prize Money and Awards

\$1000- \$300 and chair, \$200, \$150, \$100, \$75, \$65, \$55, \$55

\$500- \$150 and chair, \$100, \$75, \$55, \$45, \$35, \$25, \$15

\$250- \$60 and chair, \$50, \$45, \$40, \$30, \$25

\$100 Addback (\$25 of entry fee)- \$30 +30% and chair, \$20 +20%, \$18 +18%, \$14 +14%, \$10 +10%, \$8 +8%

Hitch Stables 27460 Polo Road Folsom, LA 70437

~Class Specifications~

~EQUITATION ~

OPEN EQUITATION - All heights. Open to all riders. Horses may enter just the flat class in any Open Division.

JUNIOR EQ. DIVISION - Ages 11 & under fences 2'3". 12-14 not to exceed 2'6". 15-17 3'. Sections with less than 3 riders will be combined. *LHJA, MHJA*

ADULT AMATEUR EQ. DIVISION – 3' Open to amateur riders. If there are less than 3 riders, it will be combined with Junior equitation. *LHJA, MHJA*

NOVICE EQ. DIVISION – 2'3" Open to junior & adult amateur riders. Rider may not cross enter into classes where the fences are 2'9" or higher at this show. *LHJA*

PRE-CH/AD EQ. DIVISION – 2'6" Open to junior & adult amateur riders. Rider may not cross enter into classes where the fences are 3' or higher at this show. *LHJA, MHJA*

LHJA, MHJA MEDAL – 3' Open to all junior & amateur riders. Rider not eligible for the Micro or Mini Medal. *LHJA, MHJA*

MICRO MEDAL- 2'3' Open to all junior & amateur riders who have not jumped 2'9" or higher. *LHJA*

MINI MEDAL – 2'6" Open to all junior & amateur riders who have not jumper 3' or higher. *LHJA*

~NEW RIDER ~

BEGINNER EQ. OVER TROT X – Beginner riders who have not jumped over fences 2' or higher AT ANY SHOW. May only cross enter into Advanced Beginner Trot X. *LHJA*

ADVANCED BEGINNER EQ. OVER TROT X – Beginner riders who have not jumped over fences 2' or higher AT ANY SHOW. May cross enter into Mini Stirrup OR Beginner Eq over Trot X but NOT both. *LHJA, MHJA*

MINI STIRRUP EQ.– Trot X to canter vertical. Beginner riders who have not jumped over fences 2' or higher AT ANY SHOW. May cross enter into Advanced Beginner Eq. over Trot X or Pre-Short/Long Stirrup but NOT both. *LHJA, MHJA*

PRE-SHORT/LONG STIRRUP HUNTER-Canter course of 1' verticals. Open to beginner riders who have not jumped fences 2' or higher AT ANY SHOW. May only cross enter into Mini Stirrup. *LHJA*

SHORT STIRRUP – 2' Riders 12 & under who have not jumped higher than 2'3" at any show. *LHJA, MHJA*

LONG STIRRUP – 2' Riders 13 & over who have not jumped higher than 2'3" at any show. *LHJA, MHJA*

POLES- Beginner Riders who have not jumper an X or higher at any show. Poles shown at walk or trot. Riders may only cross enter between the sections.

Warm-Ups and Training Jumper classes may be done multiple times but will incur a fee for every time done.

~HUNTER ~

OPEN HUNTER- All heights. Open to all horses & riders. Horses may enter just the under saddle in any Open Division.

PERFORMANCE HUNTER 3'3"- Open to all horses & riders. *LHJA, MHJA*

BABY GREEN HUNTER – 2'6" Horses in their FIRST or SECOND year of showing. Horses cannot cross enter into classes where the fences are higher than 2'9" at this show.

LHJA, MHJA GREEN HUNTER

– 3'/3'3" Horses in their FIRST or SECOND year of showing that have not jumped 3'6" or higher in classes at any show. *LHJA, MHJA*

CHILDREN'S HUNTER – 3' Junior riders. Horse/rider combination not eligible for JR Hunter. *LHJA, MHJA*

ADULT AM HUNTER – 3' Adult Am. riders. Horse/Rider combination not eligible for A/O Hunter. *LHJA, MHJA*

CHILD PONY HUNTER – 2' SM/MED, 2'6" LG Junior riders. USEF rider age rules apply. *LHJA, MHJA*

JR/AO HUNTER – 3'3" Junior & Amateur owner riders. Horse/rider combination not eligible for Children's or Adult Hunter.

NOVICE HUNTER. DIVISION – 2'3" Open to junior & adult amateur riders. Rider may not cross enter into classes where the fences are 2'9" or higher at this show. *LHJA*

PRE-CHILD/ADULT HUNTER – 2'6" Open to junior & adult amateur riders. Rider may not cross enter into classes where the fences are 3' or higher at this show. *LHJA, MHJA*

MODIFIED CHILD/ADULT HUNTER – 2'9" Junior & adult amateur riders. Rider may not cross enter into classes where fences are 3'3" or higher at this show. *LHJA, MHJA*

LIMIT RIDER HUNTER – 2'6" Riders who have not won 6 blue ribbons over fences 2'6" or higher. *LHJA*

~JUMPER ~

BAYOU JUMPER - .65m Riders cannot jumper higher than .90m (2'11") at this show.

HOPEFUL JUMPER - .75m Horses cannot jump higher than 1.05 (3'6") meter at this show. *LHJA, MHJA*

LOW SCHOOLING JUMPER - .90m Open to all horses. *LHJA, MHJA*

HIGH SCHOOLING JUMPER – 1.05m Open to all horses. *LHJA, MHJA*

CHILD/ADULT JUMPER – 1.05m Junior & amateur riders. *LHJA, MHJA*

1.15M JUMPER- Open to all horses.