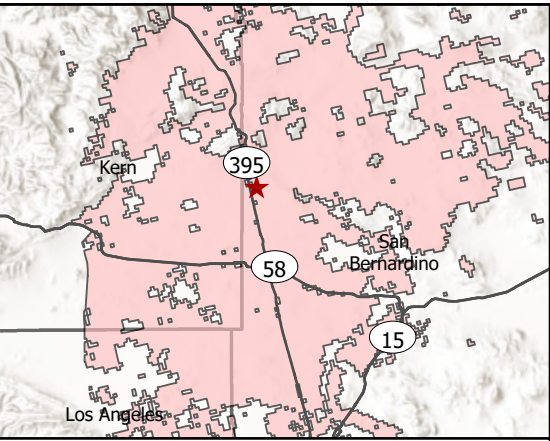


Mohave Ground Squirrel Pilot Study Area

- Demography Camera Cell (1.69 ha)
- Occupancy Camera Cell (49 ha)
- Dual Demography + Occupancy Cell
- Target Trapping Plot (25 ha)
- Other Trapping Plot, not part of RFP (25 ha)
- Study Area (5,013 ha)
- Accessible Roads
- 4WD Route
- Closed Route
- BLM Lands



Predicted MGS Distribution

