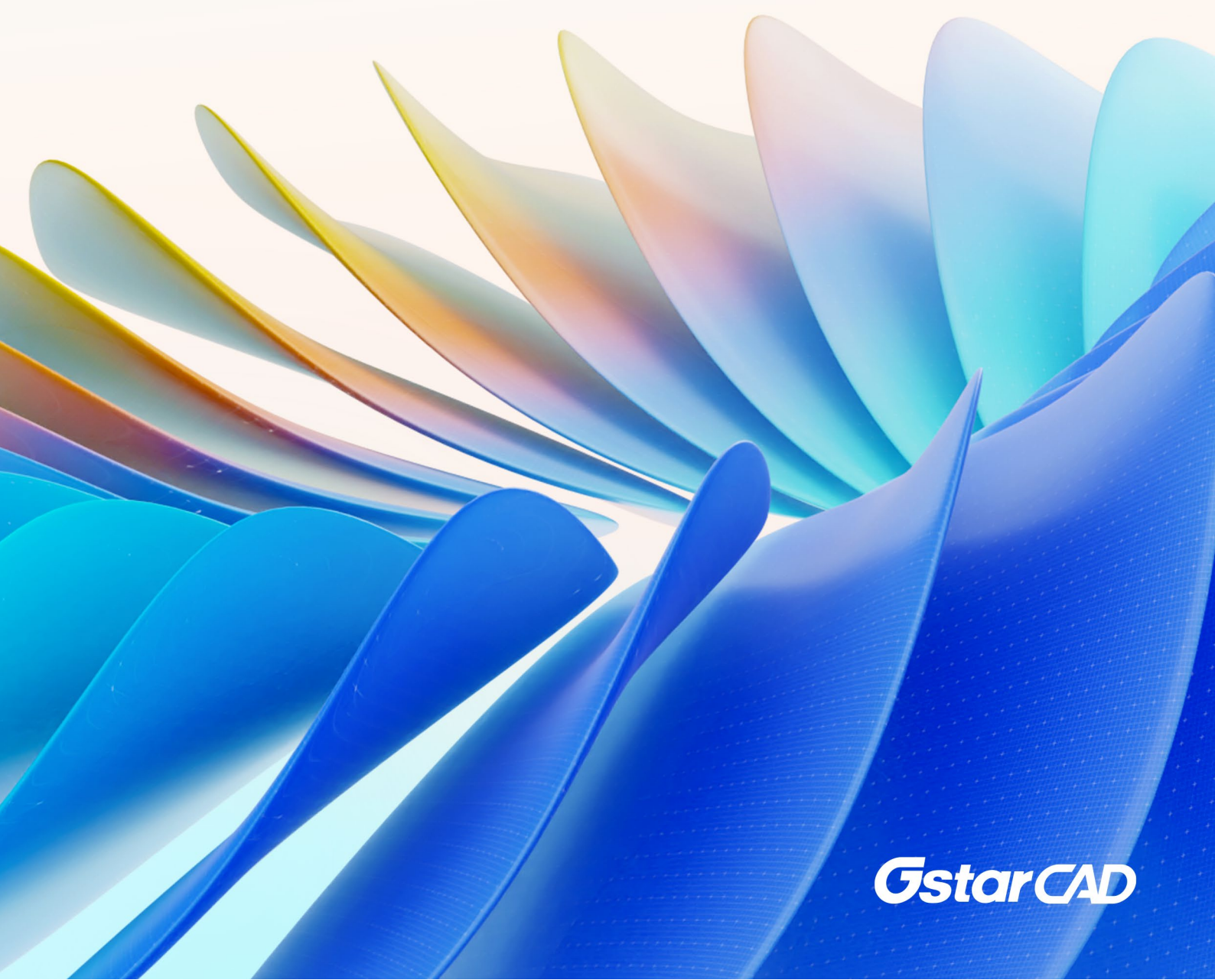




Overview

GstarCAD 2026



GstarCAD



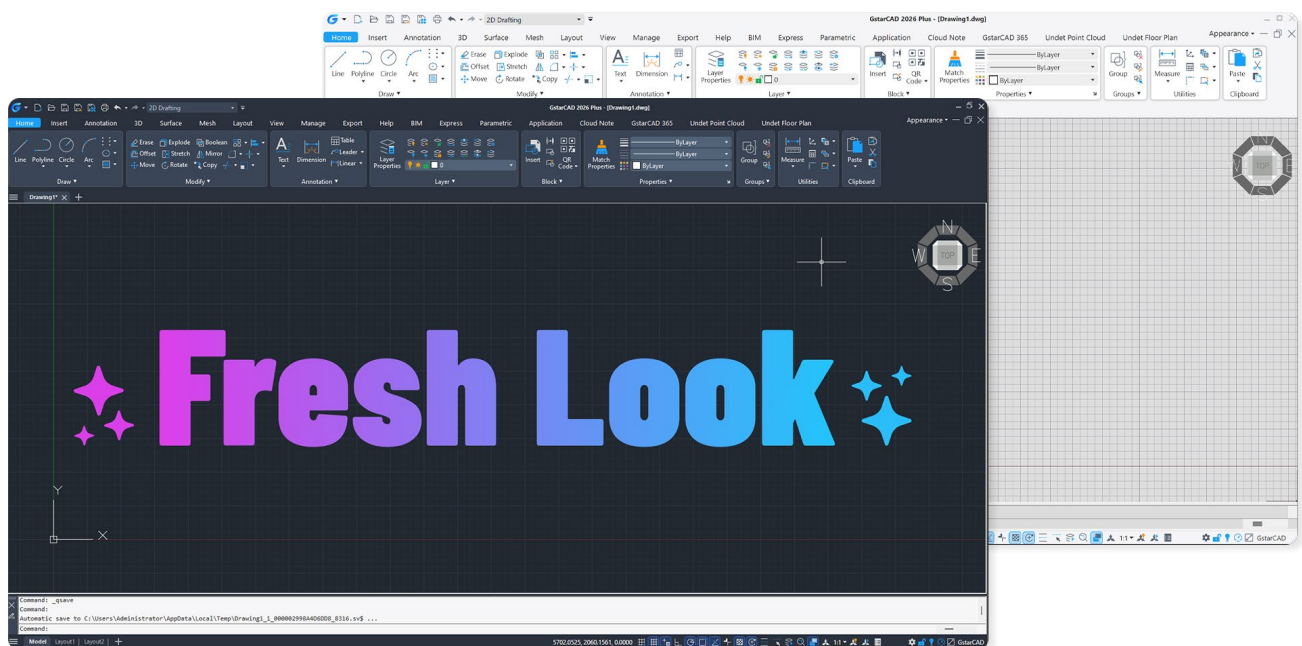
GstarCAD 2026 Overview

Fresh Look, Smarter Design, Faster Speed Powered by Core

GstarCAD 2026 introduces a completely reconstructed interface, offering a sleek, modern look that enhances the user experience. Performance improvements boost efficiency across various tasks. Exciting new features include **Dimensional Constraints**, **Parameters Manager**, **DWG Compare** and more, unlocking powerful design capabilities. Innovative feature like **Drawing Merge** streamlines workflows, and **Engineering Projection** delivers precise bottom-view accuracy. Additionally, updates to **DIMCORD**, **Batch Plot**, **Batch Purge**, **PDF Import** and **Data Extraction** further enhance usability.

Improvement Interface Reconstruction

GstarCAD interface has been reconstructed using the WPF framework and our own technologies to deliver both visual polish and technical power:



- **Visual Refresh:** Redesigned color schemes and proportions, with 1500+ icons redrawn in SVG for clear and smooth display at any scale. Refined theme colors and display effects create a sleek, modern look.
- **Technical Upgrade:** Built on a new WPF architecture with optimized secondary development interfaces and faster data handling. Full compatibility with ACAD libraries ensures zero-cost migration for existing .NET-based workflows.
- **Usability Optimization:** Recent Documents now display icons and names, with support for up to 50 entries. Subpanels can be pinned, ribbon tabs and panels can be quickly customized via right-click, and the text editor is now embedded in the ribbon to save screen space, along with other thoughtful UI improvements.

Improvement Performance

GstarCAD 2026 delivers a major leap in overall performance compared to the 2025 version, ensuring a faster, smoother, and more responsive design experience across the board:

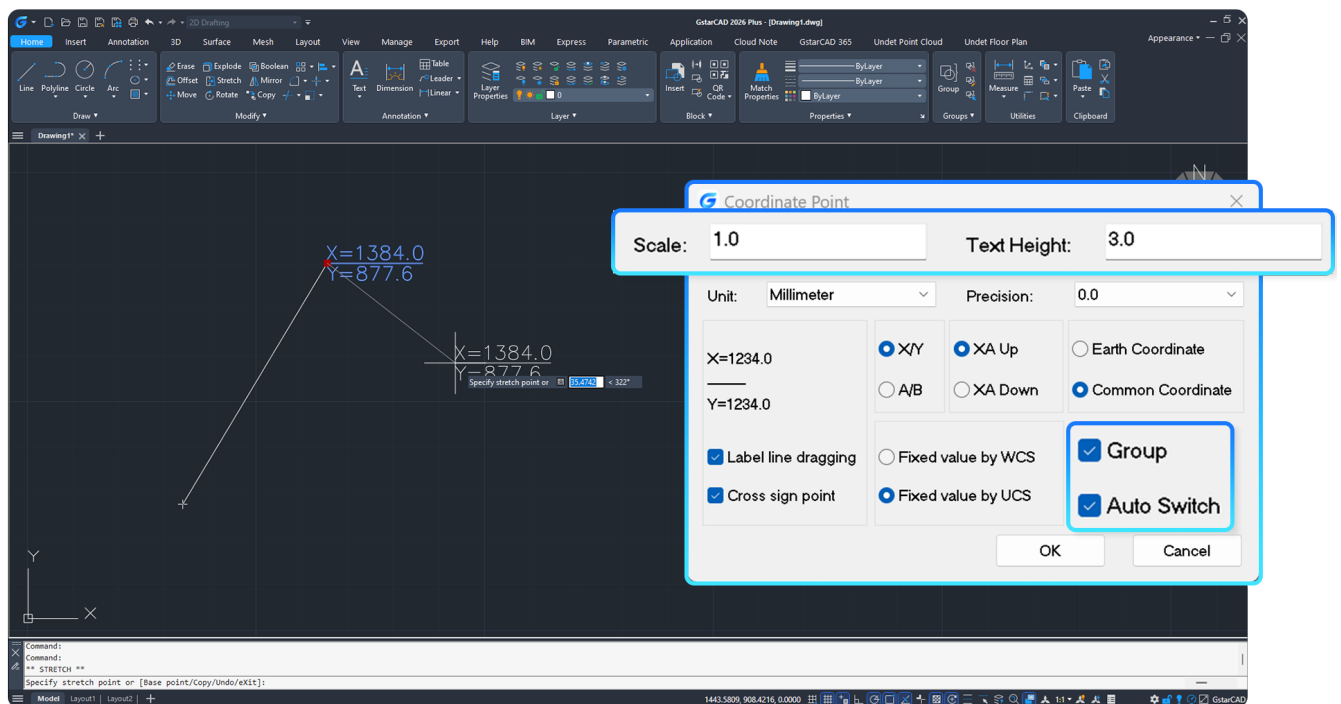
- **Drawing opening speed improved by over 40% on average**
- **Common operations improved by over 20%** (REGEN, MOVE, COPYCLIP, MIRROR, UNDO, REDO, etc.)

In addition to these overall gains, key performance enhancements are listed below:

| Feature/Operation | Performance Gain vs. GstarCAD 2025 |
|--|--|
| Multi-reference drawing opening (without clipping) | Previously lag-prone drawings now open in under 1 minute |
| EXTEND (Fence/Crossing) | 11× faster |
| TRIM (Fence/Crossing) | 2× faster |
| Clipped blocks & Xrefs | 2.9× faster opening 4.2× faster layout switching |
| Block editing preview (BEDIT/REFEDIT/INSERT) | 7× faster |
| MIRROR operation | 1.4× faster |
| Block creation/explosion | 5× faster block creation with high-coordinate entities 5× faster explosion of inserted blocks Freeze eliminated for multileader-heavy blocks |
| Hatch (pick-point on complex drawings) | 30× faster |

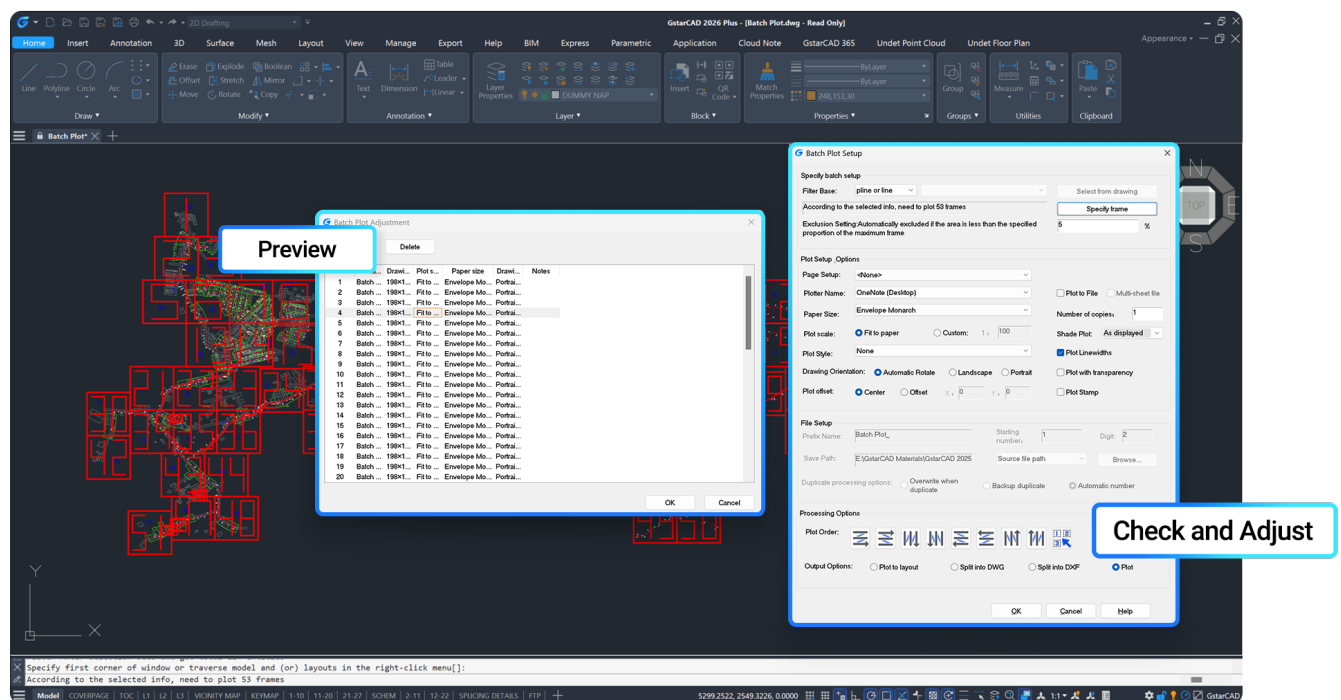
Improvement DIMCORD

The DIMCORD command now features leader lines instead of polylines, so moving a text block automatically carries its leader with it, making label placement more intuitive. The updated “Parameters” dialog also lets you adjust scale and text height, and includes new Group and Auto Switch options for greater flexibility and ease of use.



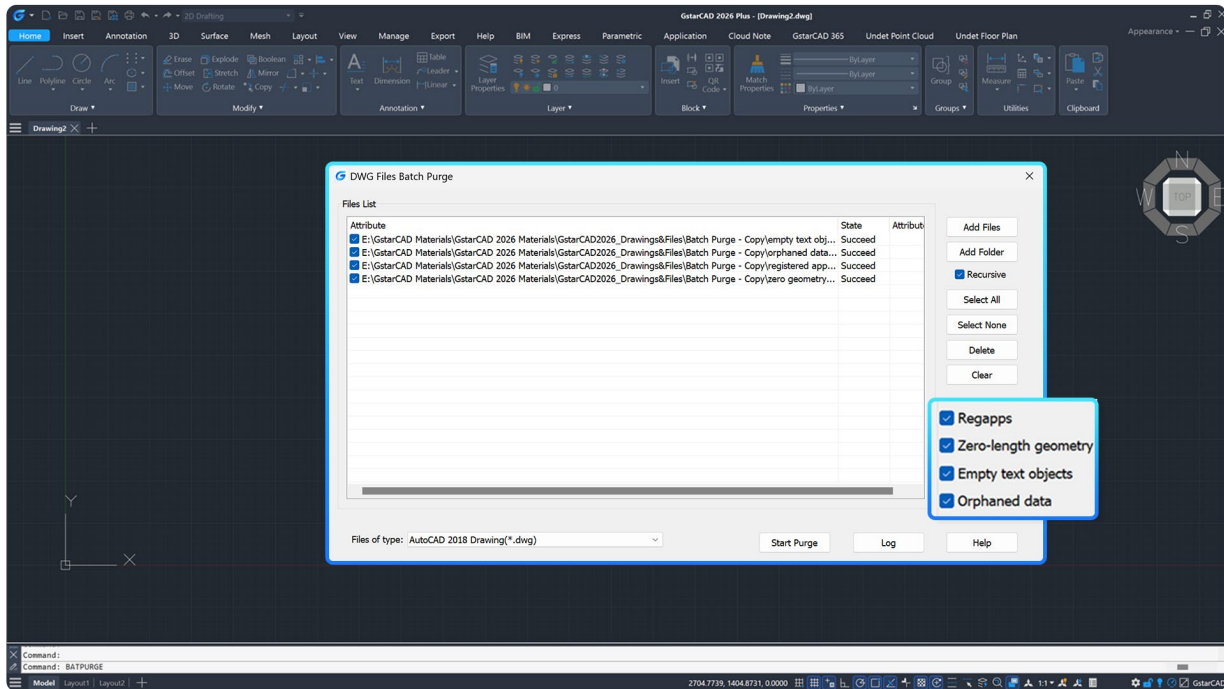
Improvement Batch Plot

Frame records can now be previewed sequentially. Clicking any record initiates the preview, while pressing the spacebar advances through frames with the active frame highlighted.



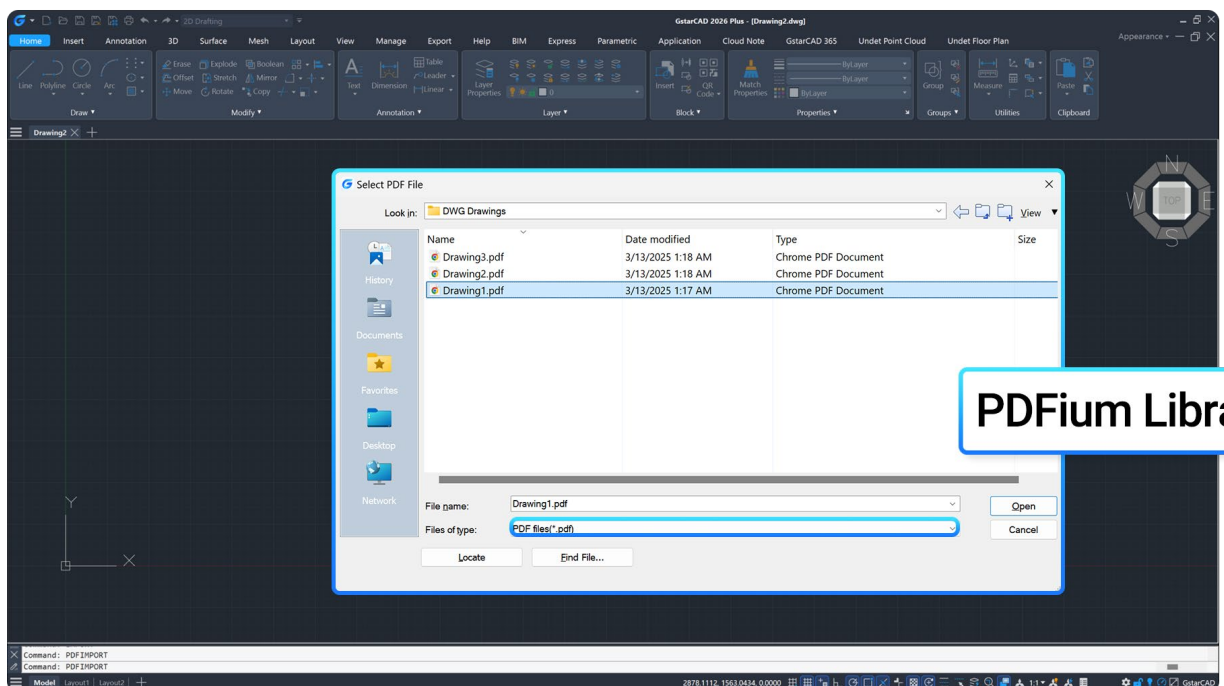
Improvement Batch Purge

The Batch Purge tool now supports cleaning up registered applications, zero-length geometries, empty text objects, and orphaned drawing data.



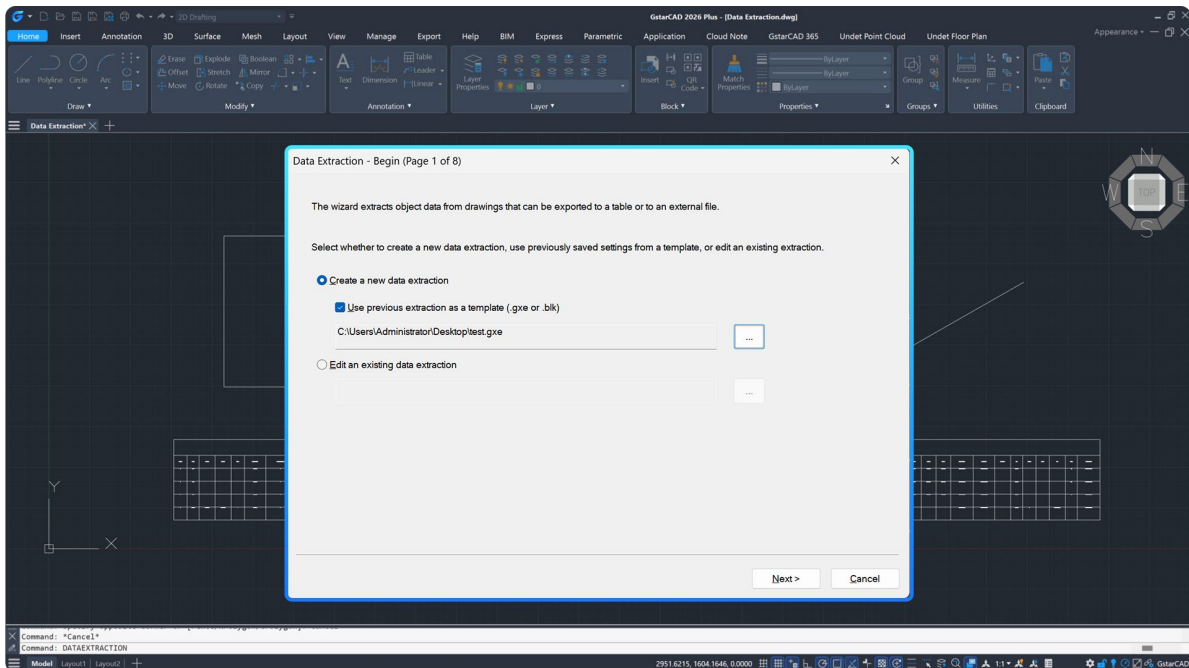
Improvement PDF Import

The PDF import engine has been upgraded to the modern, actively maintained PDFium library—boosting import speed, enhancing raster image rendering (transparency, clarity, color accuracy), improving text recognition and decoding (same-line text is recognized as MText, with each character assigned a width factor based on the first character), and delivering crisper hatch displays.



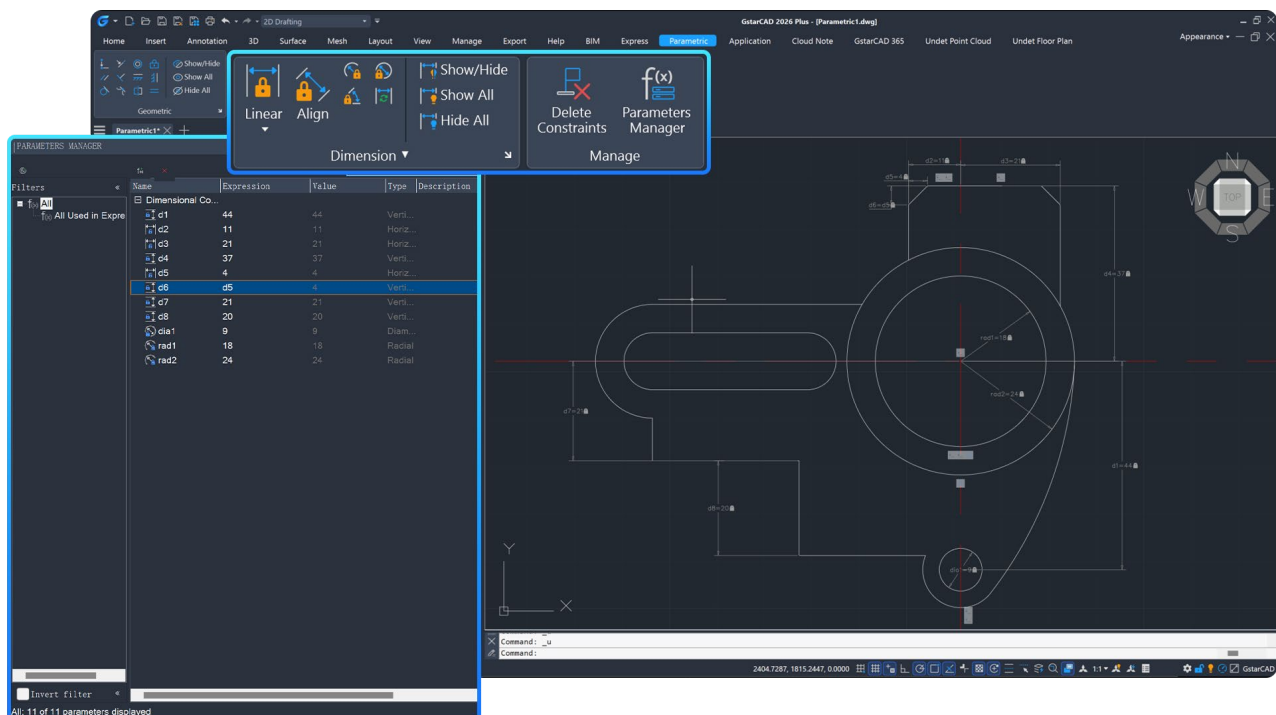
Improvement Data Extraction

GstarCAD 2026 now supports saving extraction settings in .GXE files, and reusing them as templates. You can also edit .GXE files to add or remove drawings, objects, or properties. Any tables linked to the same .GXE file will display the changes when those tables are updated.



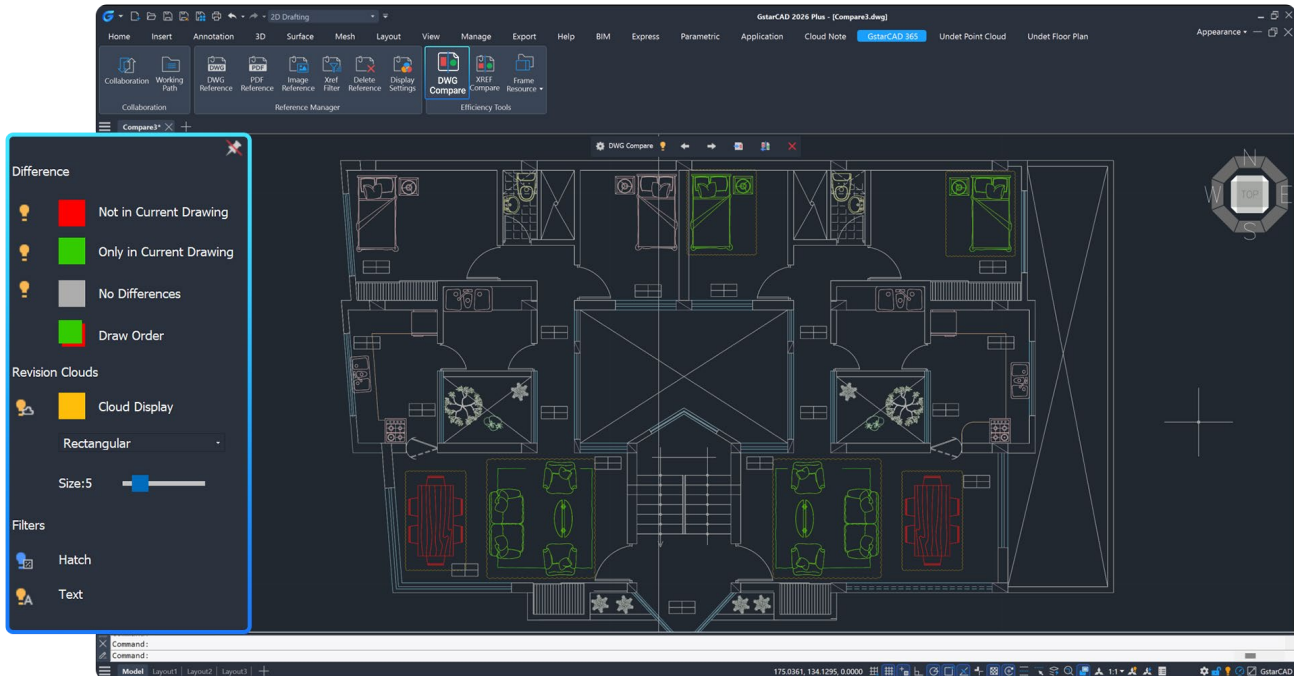
New Parametric Constraints (Phase 2)

While Parametric Constraints were first introduced in GstarCAD 2025 with support for Geometric Constraints, GstarCAD 2026 expands this powerful feature with Dimensional Constraints and Parameters Manager. These enhancements enable precise control over object sizes and proportions, and provide tools to create, edit, and organize dimensional constraint parameters, reference parameters, and user variables for greater design flexibility.



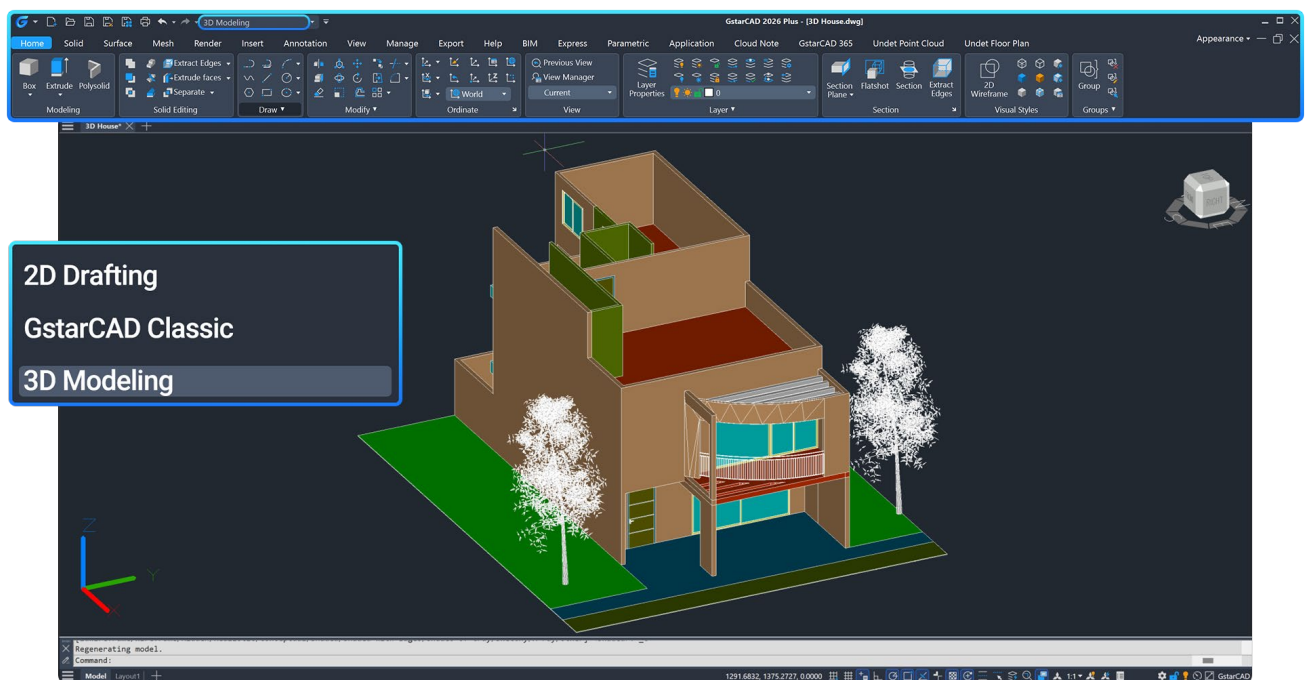
New DWG Compare

This feature compares a specified drawing with the current drawing, using revision clouds to highlight the differences. It allows users to configure comparison settings, import objects from the compared drawing, and export and bind the results into new snapshot drawings for future reference.



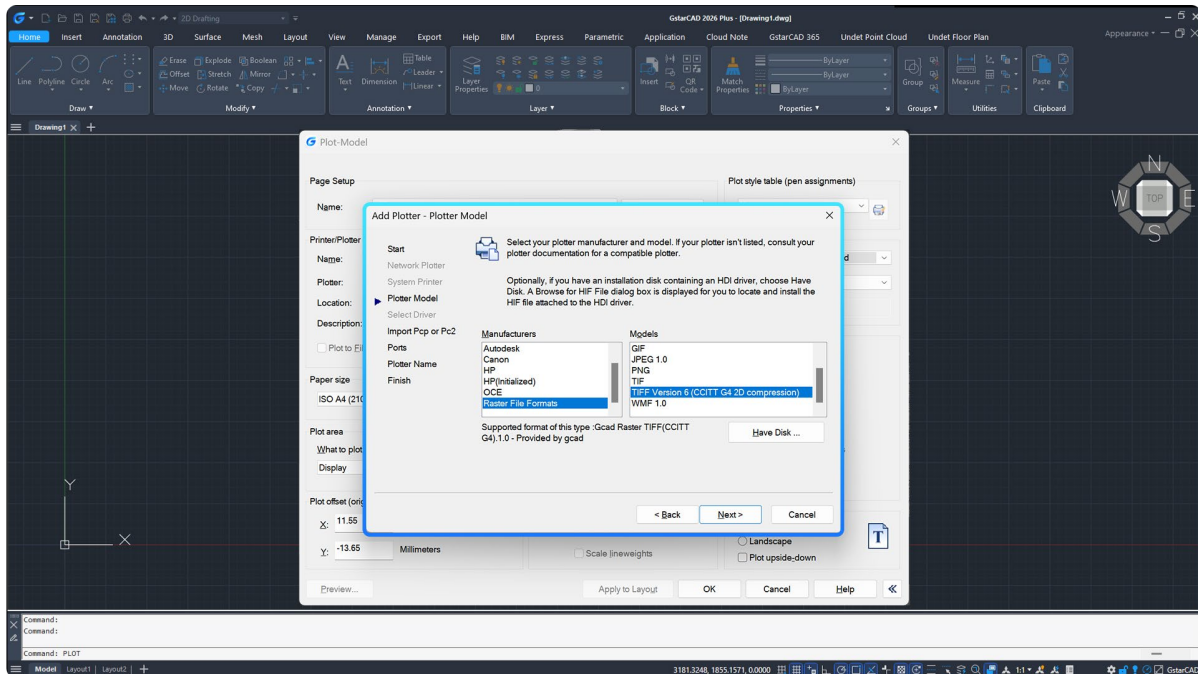
New 3D Modeling Workspace

Introduces a dedicated “3D Modeling” interface alongside the GstarCAD Classic and 2D Drafting workspaces. It displays only 3D-related toolbars, menus, and palettes—hiding unnecessary UI elements to maximize your modeling screen space.



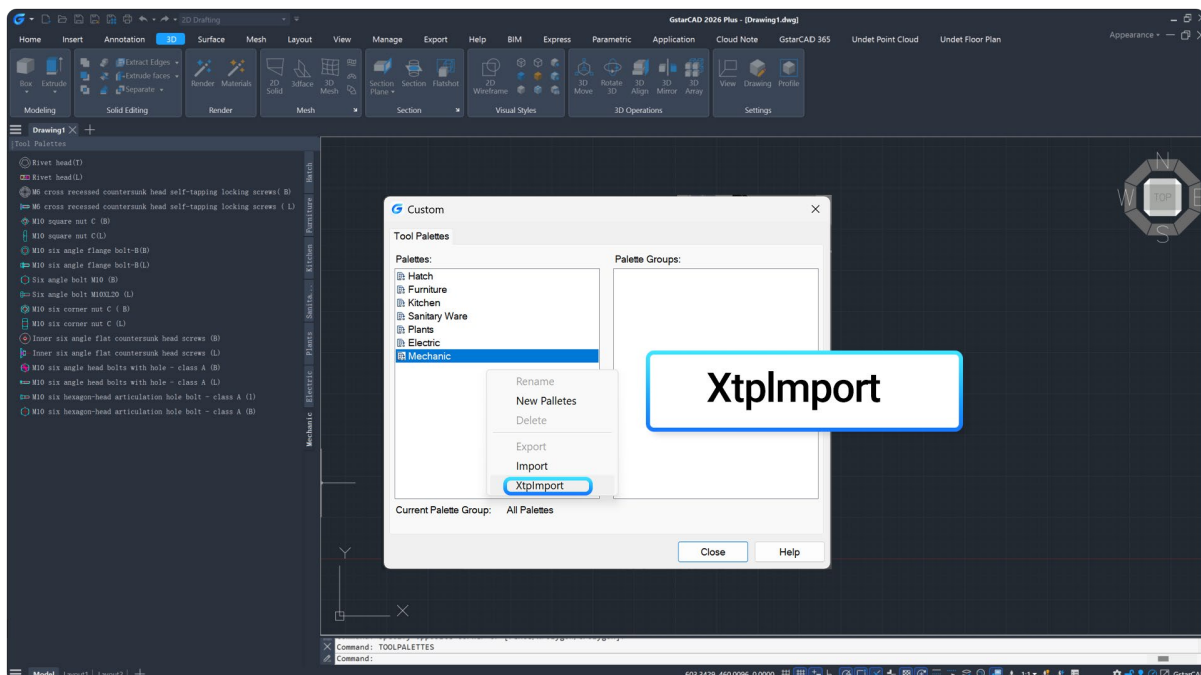
New Plot: "TIFF Version 6 (CCITT G4 2D Compression)" Plotter Support

This plotter supports only black-and-white output and greatly reduces drawing file sizes while preserving the accuracy of lines, text, and dimensions.



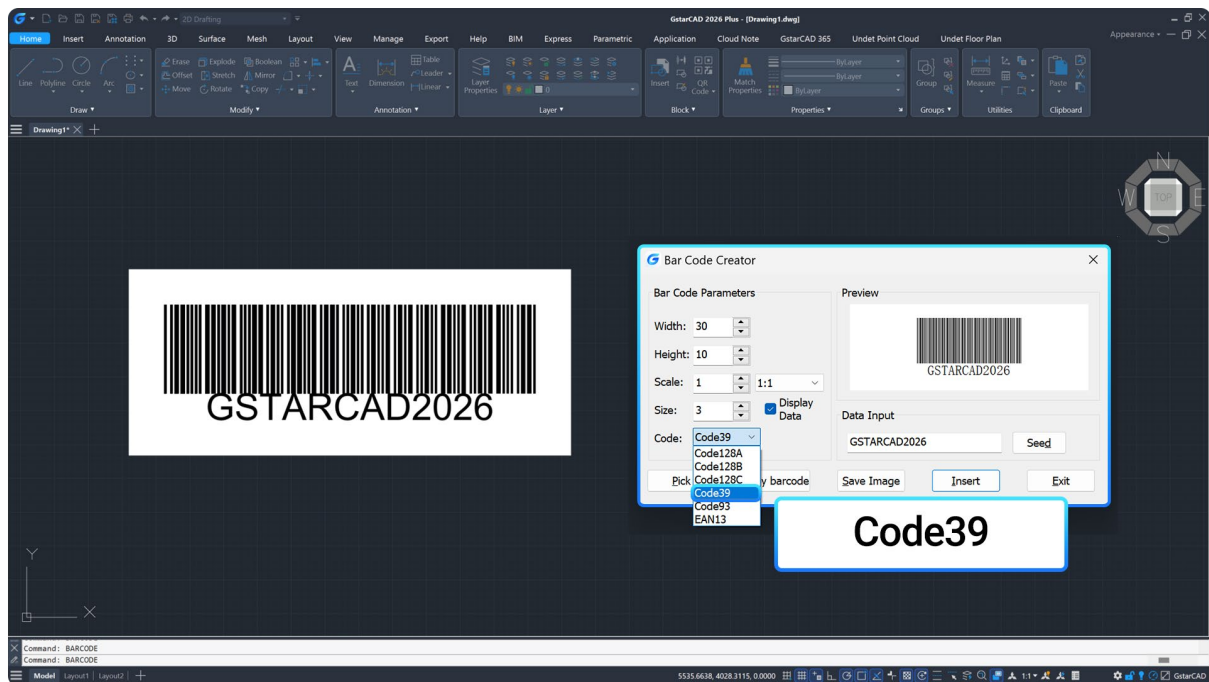
New Tool Palette: XTP File Import

Tool palettes can now be customized by importing XTP files, allowing the integration of text, separators, and block references from ACAD configuration sets. This streamlines workflows and ensures consistency across projects.



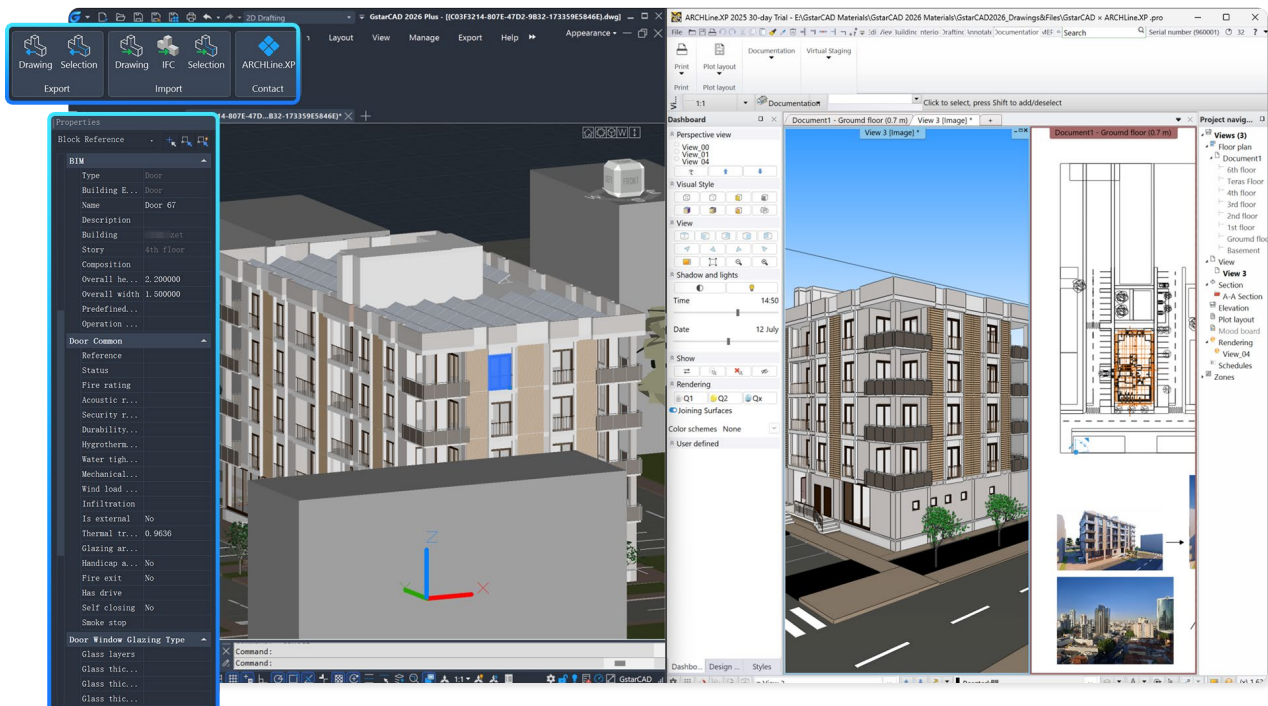
New Barcode: Code 39 Support

Adds support for Code 39 barcodes for low-cost, alphanumeric labeling with broad industrial compatibility.



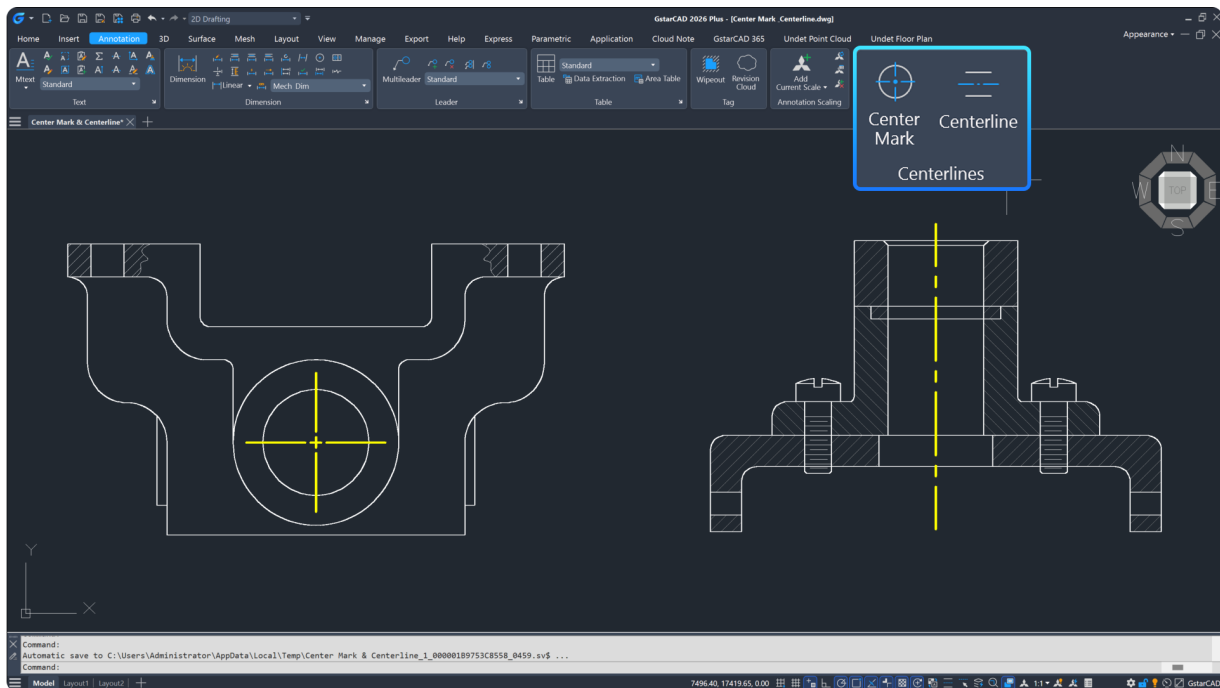
New GstarCAD × ARCHLine.XP Plugin

Integrated with ARCHLine.XP, this plugin enables direct transfer of drawings in DWG or IFC format between GstarCAD and ARCHLine.XP, eliminating tedious import/export steps and offering an effortless CAD-to-BIM workflow.



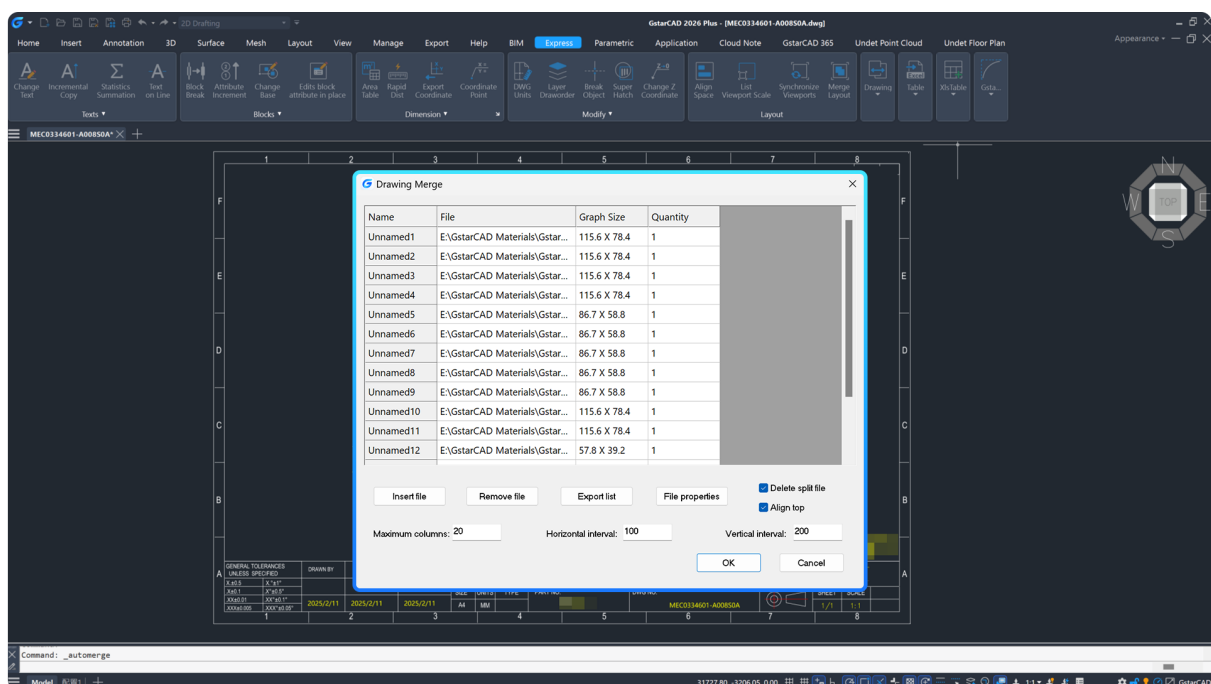
New Center Mark and Centerline

Adds dedicated tools for placing center marks and centerlines on circles and symmetrical geometry. These associative objects update automatically with the geometry, enhancing drawing precision and simplifying annotation in mechanical or architectural layouts. (Available in SP1)



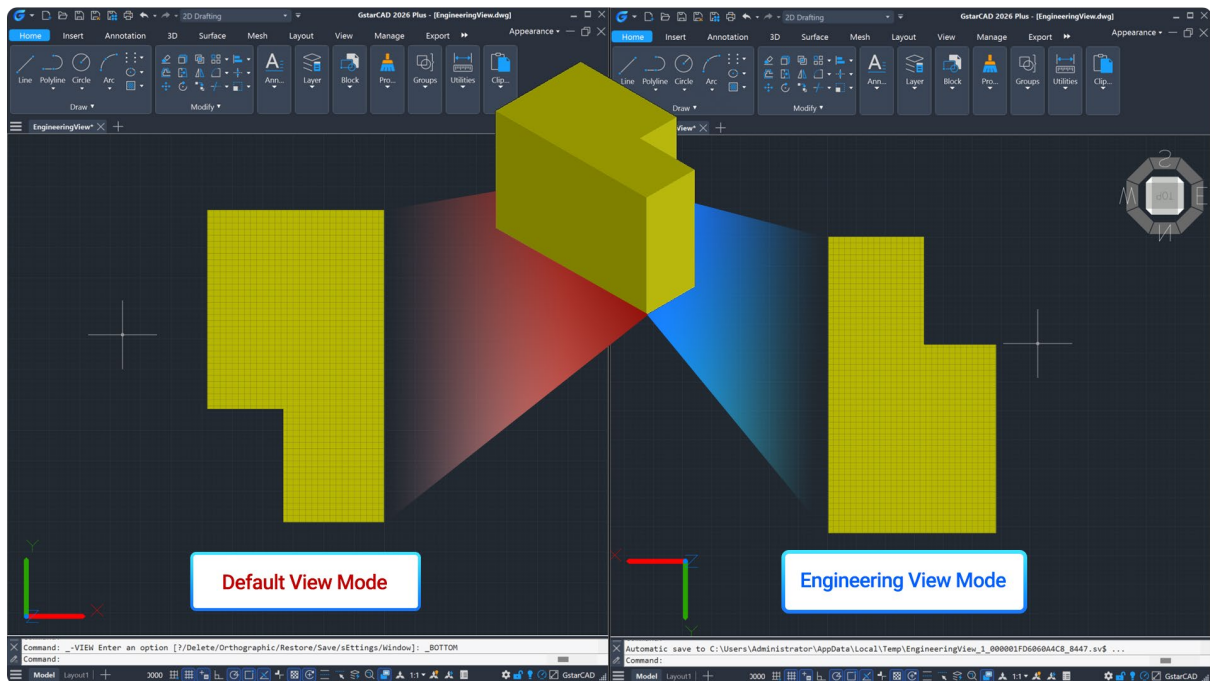
Innovative Drawing Merge

The Drawing Merge feature enables batch analysis, splitting, and merging of drawings through Xrefs, offering customizable layout settings. Additional capabilities include viewing entity properties and exporting the drawing list to a .lst file for enhanced project organization.



Innovative Engineering Projection

The ENGINEERINGVIEWMODE variable enables switching the bottom view from ACAD's default to a true engineering projection, enhancing visual accuracy in technical drawings.





GstarCAD 2026

<https://www.gstarcad.net>

Gstarsoft