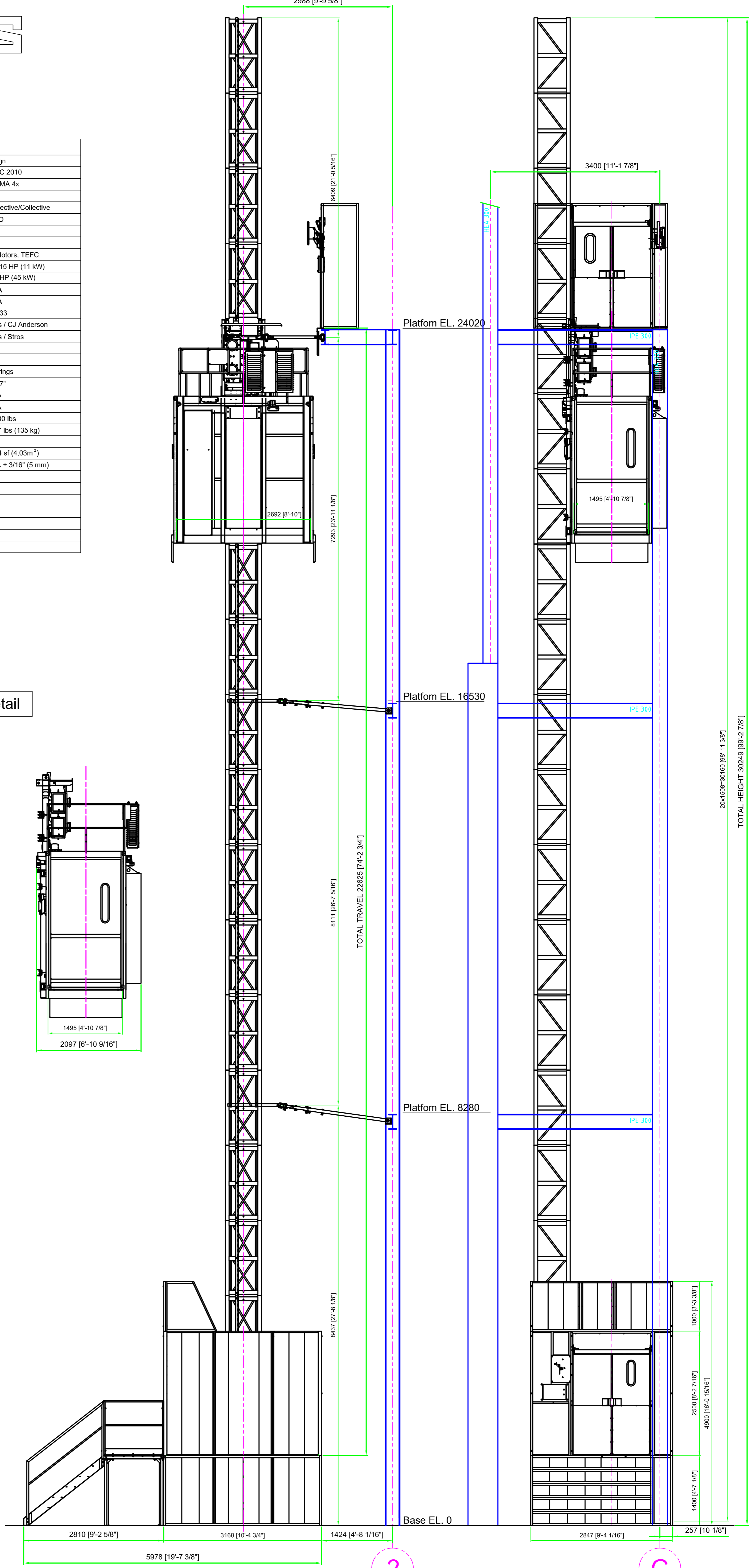
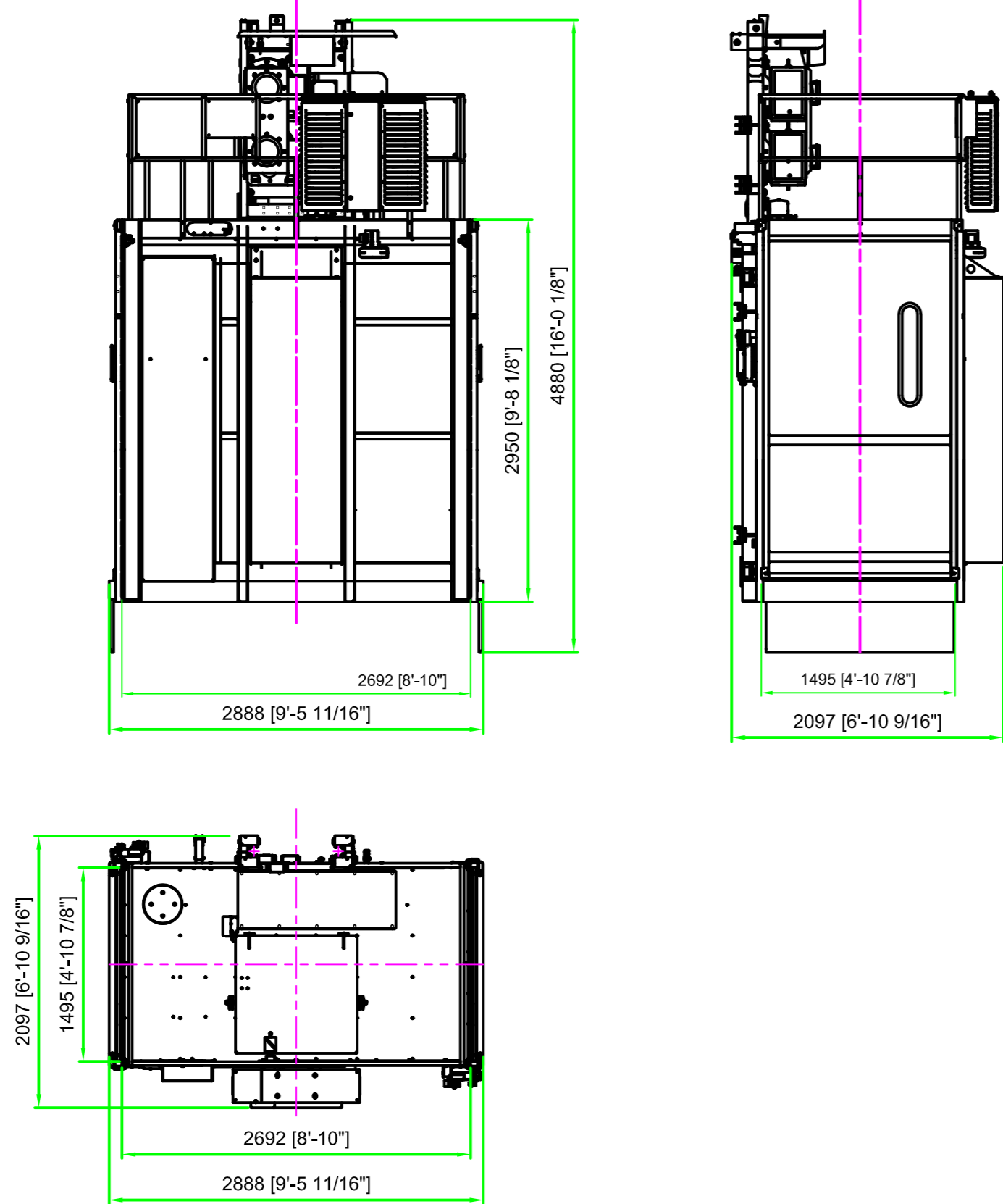


Unit 6 San Juan Plant
RACK AND PINION ELEVATOR
HS 2000 F4

UNIT DATA			
Design Options		Electrical Design	
Elevator Code in Effect	ASME 17.1, Part 4.1, 2013	Electrical Code in Effect	NEC 2010
Holst Model	HS-2000-F4	Classification	NEMA 4x
Elevator Manufacturer	Stros	Labeled	UL
Load Capacity	4400 lb (2000kg)	Control Operation	Selective/Collective
Speed	150 FPM (46m/min.)	Motor Control	VFD
Total Travel	74' 2 3/4" (22.625m)	Electrical Data	
Total Height	99' 2 7/8" (30.25)	Motor Type	2 Motors, TEFC
Number of Landings	2 (1+1)	Motor Size	2x 15 HP (11 kW)
Rack Lubrication	N/A	VFD Size	60 HP (45 kW)
Telephone	N/A	Starting Current	90A
Overload Device	N/A	Full Load Current	69A
Ventilation Fan	N/A	Gear Box Ratio	23.33
Anemometer	N/A	Door Interlocks/Mfr.	Yes / CJ Anderson
Probe hatch	N/A	Retiring Cam/Mfr.	Yes / Stros
Bumper Rail	YES	Miscellaneous Data	
Counter Weight	N/A	Car Buffer Type	Springs
Car Walls MOC/Finish	Aluminum	Number / Stroke	3 / 7"
Car Doors MOC/Finish	Aluminum/Galvanized Steel	Cwt. Buffers	N/A
Car Floor a Roof MOC/Finish	Solid/Galvanized	Number / Stroke	N/A
Landing Doors MOC/Finish	Aluminum / Galvanized Steel	Total Car Weight	4700 lbs
Landing Screens MOC/Finish	Steel/Galvanized	Tower Section Weight	297 lbs (135 kg)
Structural parts MOC/Finish	Steel / Galvanized	Seismic Zone	
Tower MOC	Steel / Galvanized	Usable floor area	43.4 sf (4.03m ²)
Tower Type	* S * (650x650)	Stopping accuracy	app. ± 3/16" (5 mm)
Customer Supplied Requirements			
To Motors	480V/3PH/60Hz-90A		
To Controller	120V/1PH/60Hz-15A		
To Pit	120V/1PH/60Hz-15A		
Telephone Line	Terminated In Junction Box 10' from Elevator Base		
Fire Detection Signal	Yes, Signal Terminated In Junction Box 10' from Elevator Base		
Purge Air	N/A		

Cage Detail

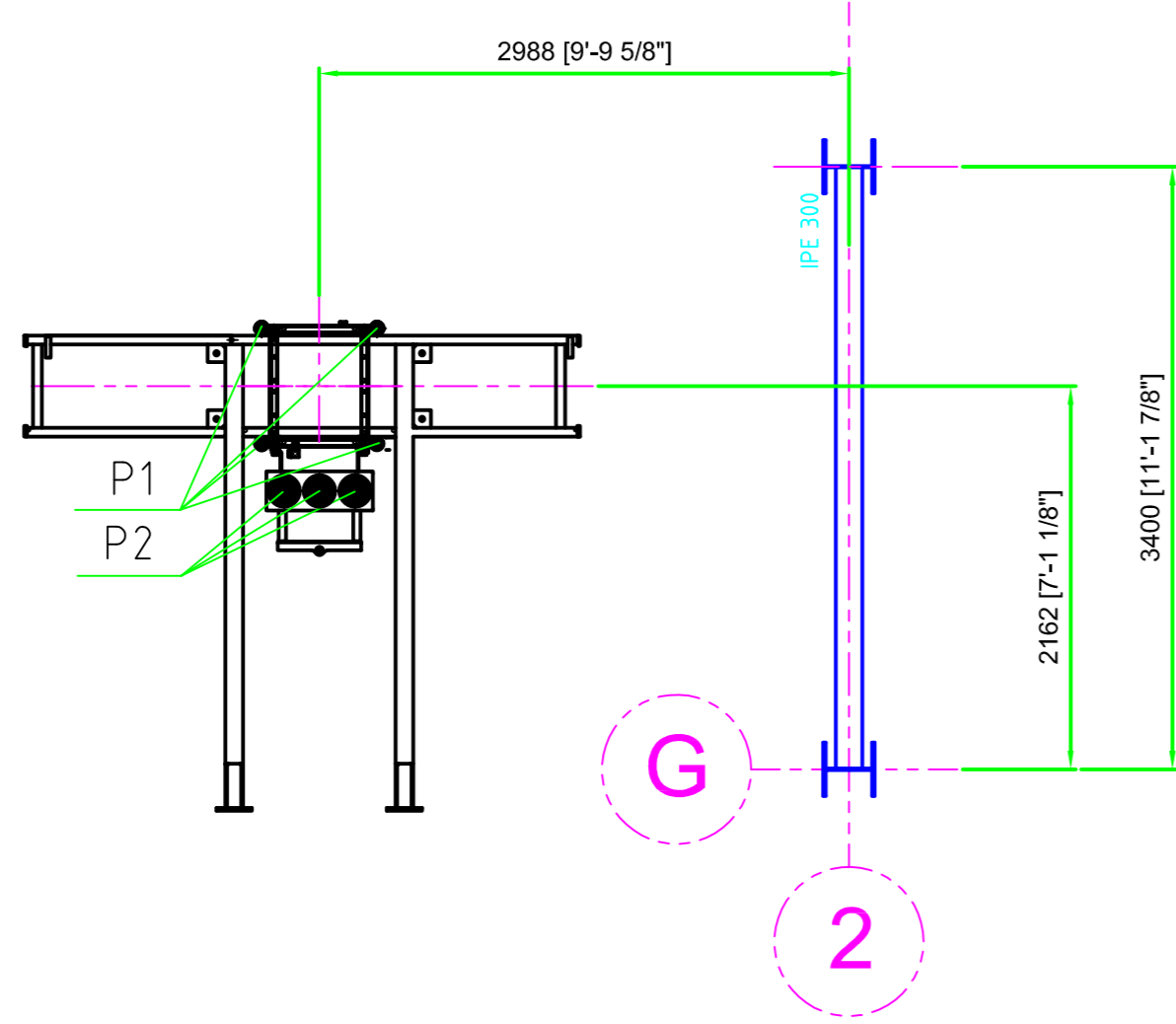


2

G

d	REVISION	DATE	
c	CHANGE		
b	Rev.2	02-26-19	
a	Rev.1	02-07-19	
Material			MASS (kg)
Designed Cizek			02-21-2018
Checked Prosek			Date.
Name			OLD DRW NEW DRW
HS 2000 F4 U6 San Juan Plant			1974789
			1/2

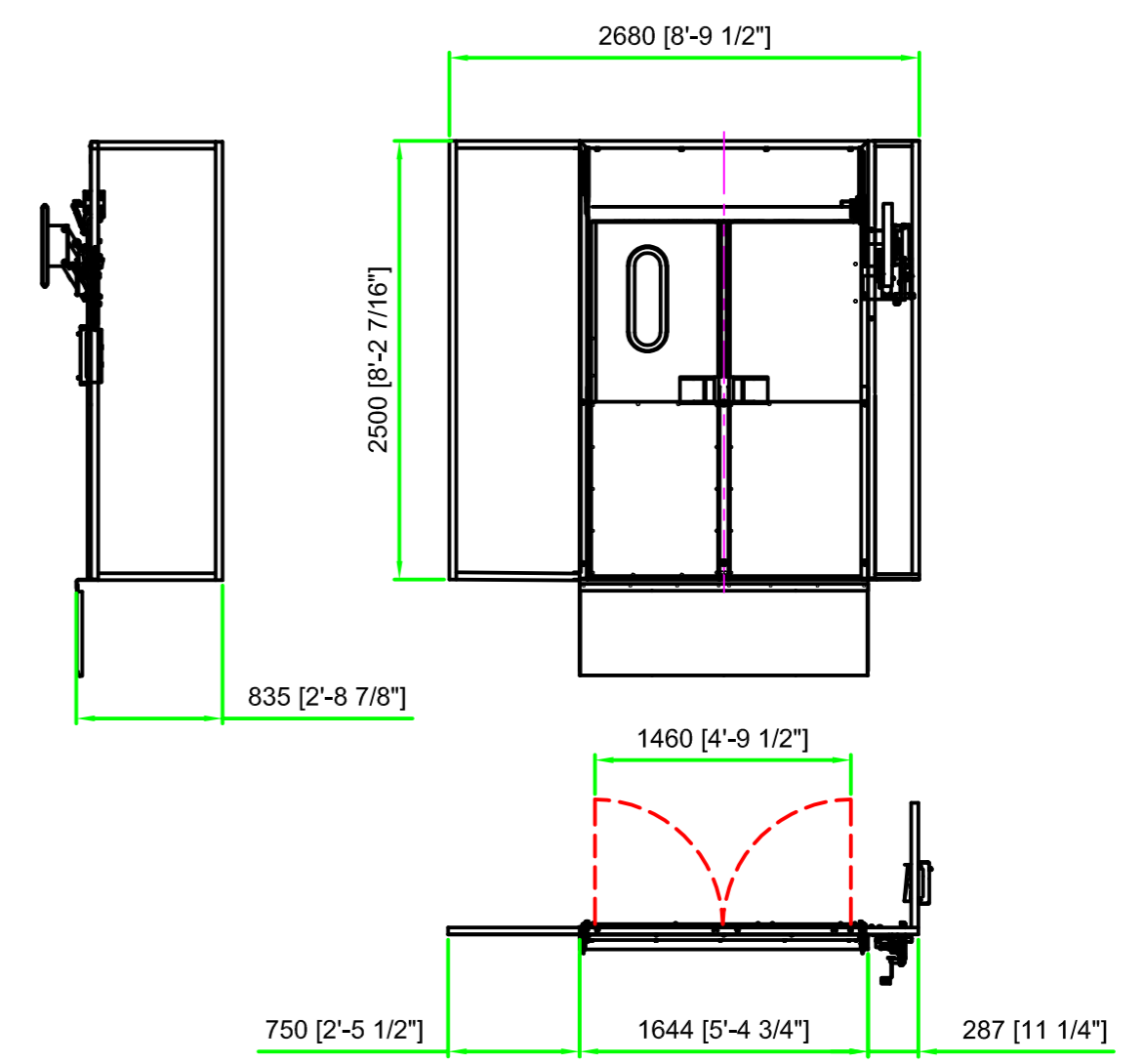
Base Frame Detail



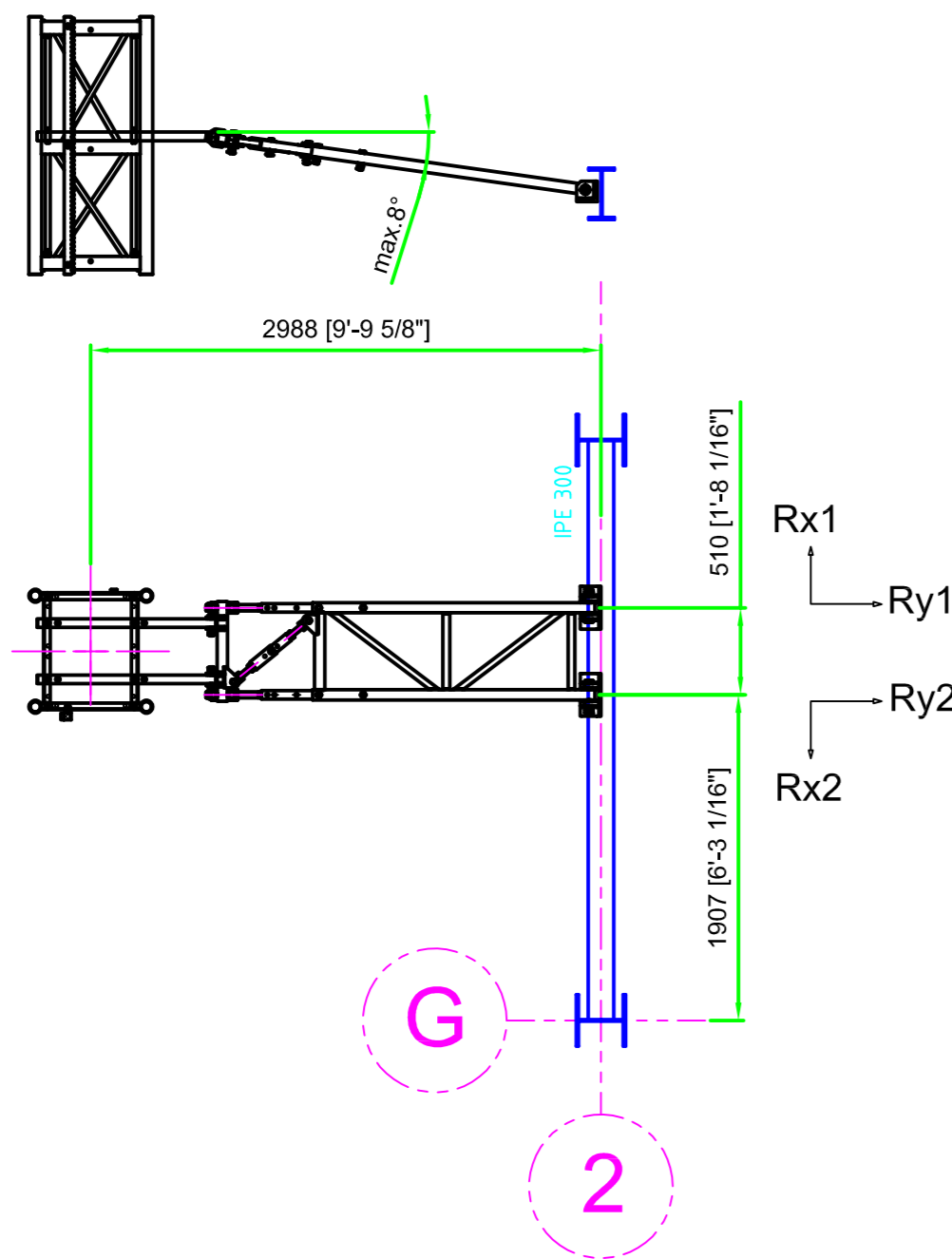
FOUNDATION LOADS		
	P1 - MAST	P2 - BUFFERS
service	25,555 lb (114 kN)	-
emergency	8,444b (38 kN)	42,867 lb (191 kN)

P1- 1/4 acting on each tube
P2- Car buffers, 1/3 acting on each spring

Landing Door Detail

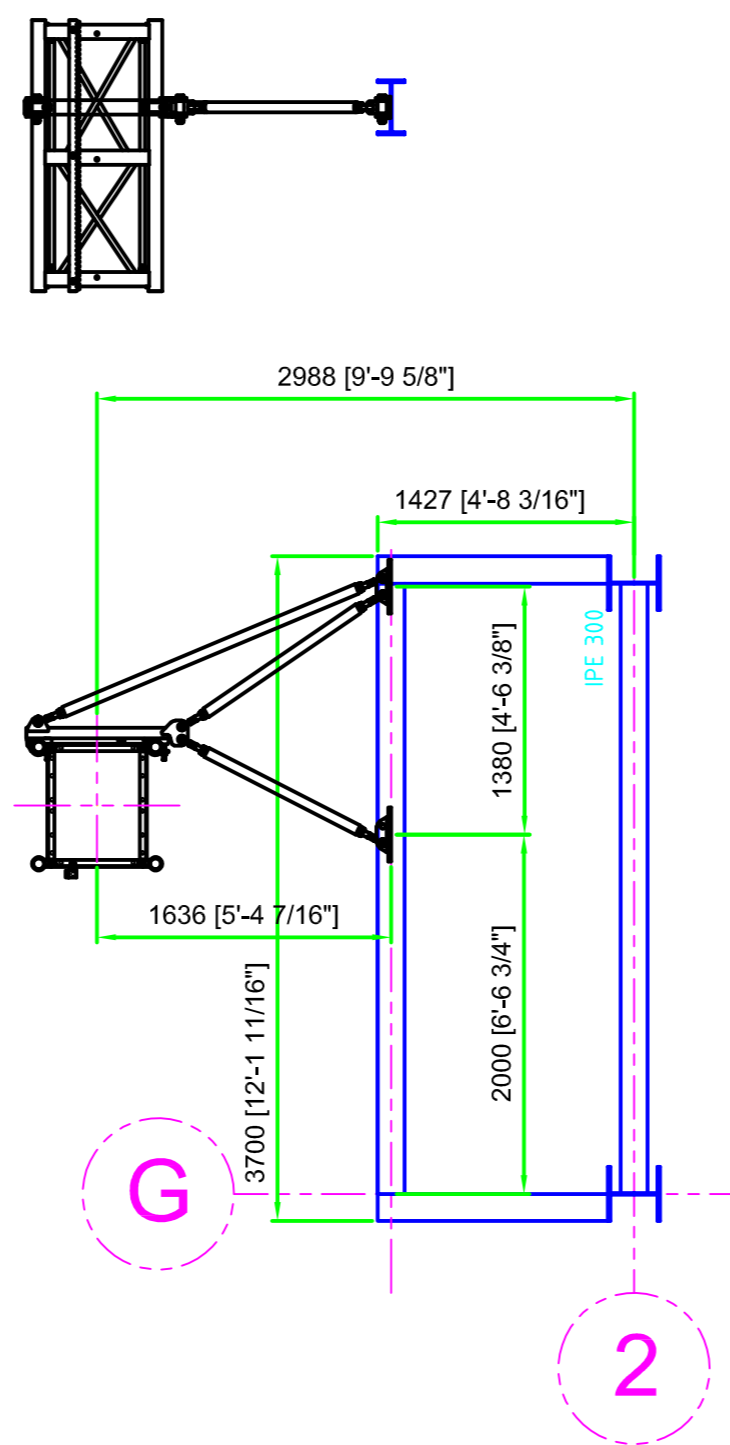


Tie Detail-EI.8250,EI.16500

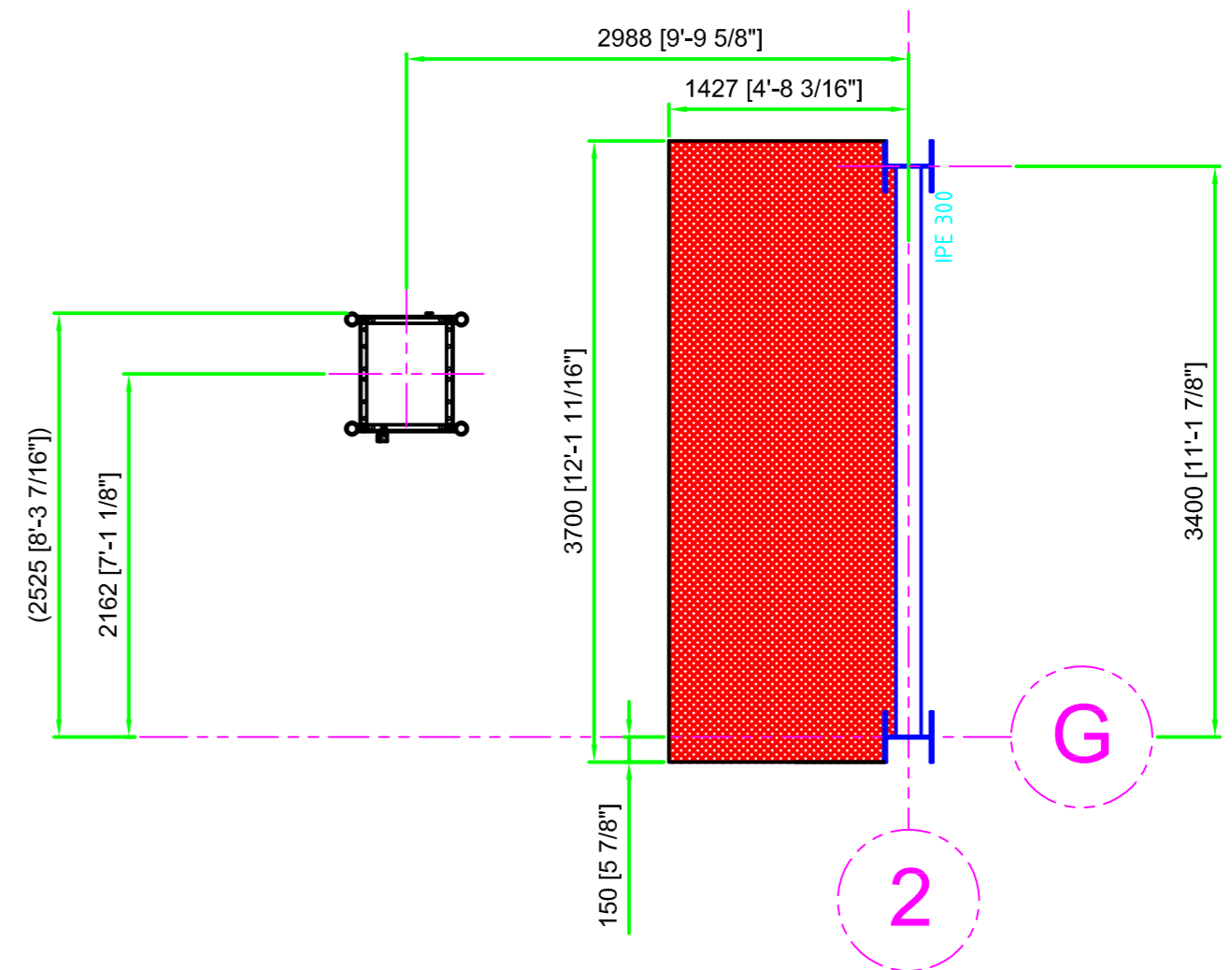


MAST TIE IN LOADS
Will be calculated upon layout approval

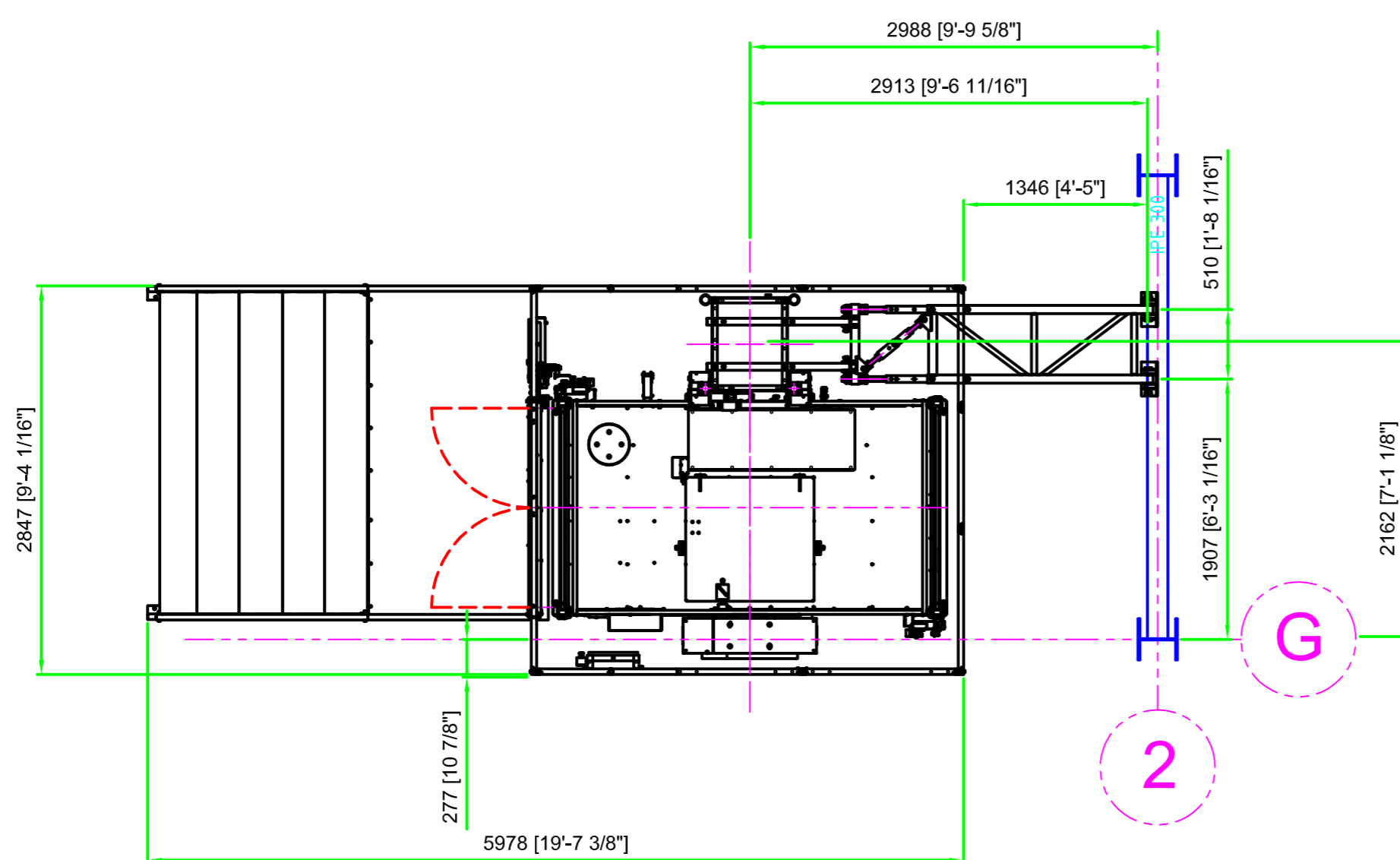
Tie Detail-EI.23990



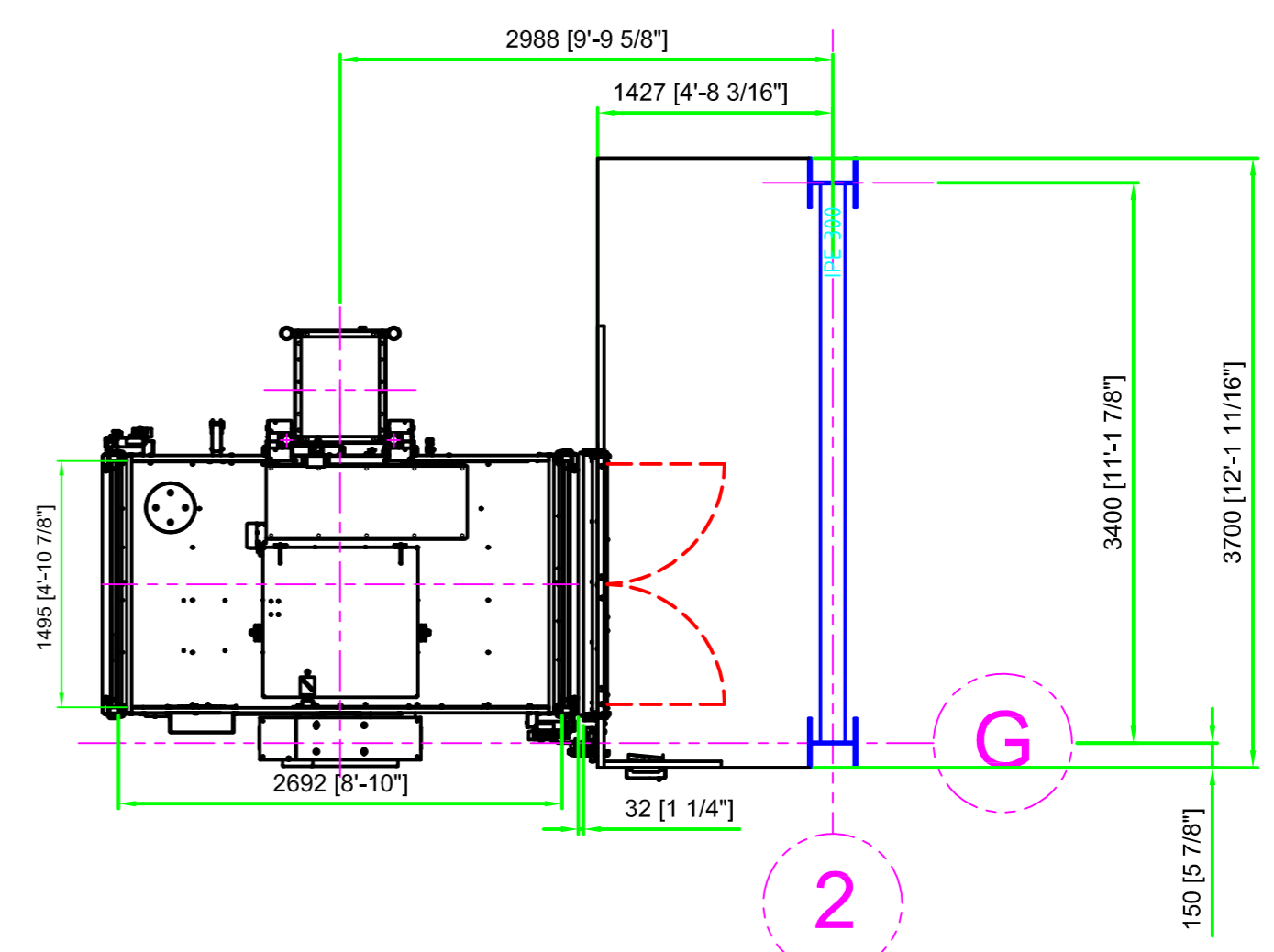
Landing Platform



Base Enclosure Layout



Typical Landing Layout



d	DATE			1:20
c	CHANGE			
b	Rev.2	02-26-19		
a	Rev.1	02-07-19		
Material			MASS (kg)	SCALE
Designed	Cizek	02-21-2018		
Checked	Prosek	Date.	OLD DRW	NEW DRW
Name	HS 2000 F4 U6 San Juan Plant		1974789	2/2