

A complete listing of the Governing Documents and \Rules and Regulations for Lafayette Place can be found at our website, [www.lafayetteplace.net](http://www.lafayetteplace.net)

### **IMPROPER TRASH DISPOSAL – FINES ASSESSED**

We continue to have problems with improper trash disposal, resulting in large fines from Waste Management, our trash disposal company.

Please see the attachment for some photos showing just a few of the recent items left at the dumpsters, including chairs, mattresses, toilets, doors, tile flooring, and other building materials. None of these items should be disposed of inside or around the dumpsters.

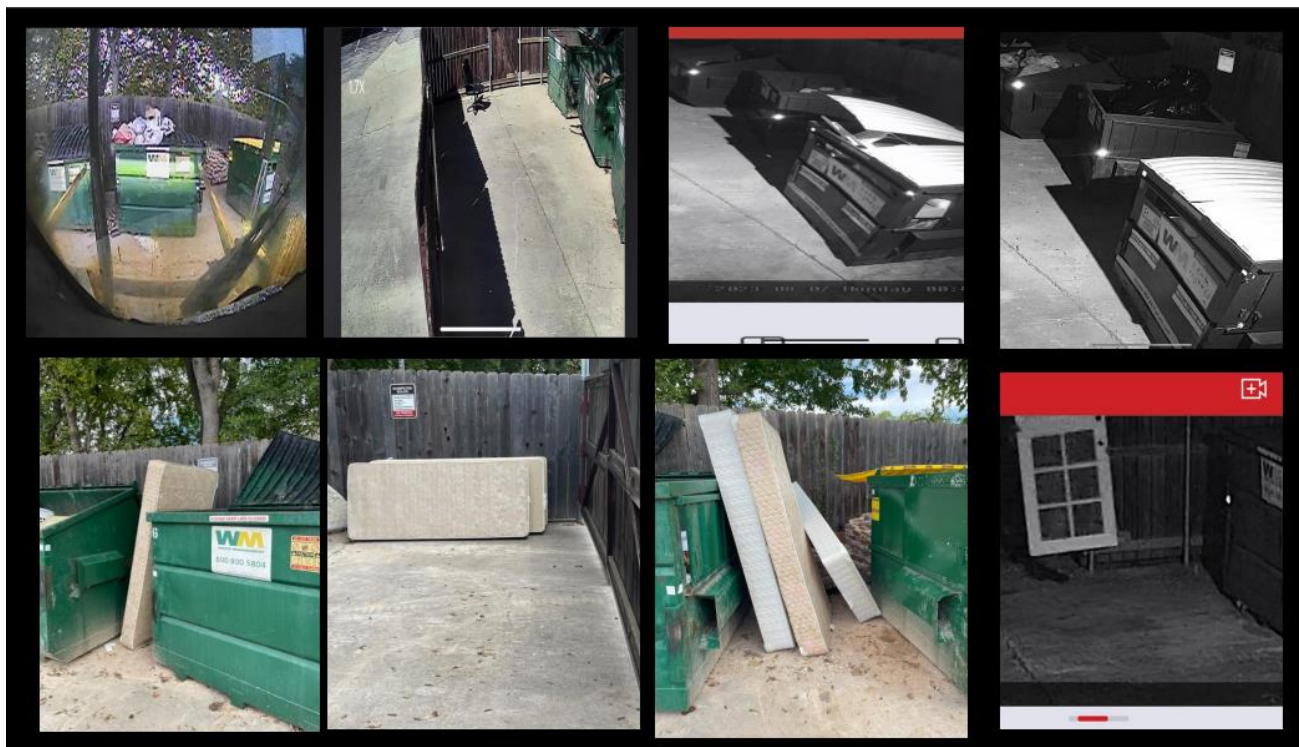
We also receive a huge fine of \$225 every time the trash exceeds the rim of the dumpster, as shown in a couple of the attached photos. There are signs posted at the dumpster area clearly indicating that all trash must fit inside the dumpster without exceeding the rim.

Luckily, using the security cameras at the dumpster area, we have been able to identify the units responsible for the last several fees imposed on us by Waste Management, and of course that unit is responsible for paying that fee, since it wouldn't be fair for every unit to have to pay for the improper trash disposal of another unit.

Please pay close attention to the signs posted at the dumpster. **Dumpsters are designed for household trash only.**

Also, due to excessive fines resulting from non-recyclable items being thrown into the recycle dumpster, the recycle bin has now been locked and only flattened boxes may be placed through the slot at the front of the dumpster. Please do not throw unflattened boxes into the regular dumpsters or leave them on the floor outside the dumpsters.

If you have any questions regarding what may be properly disposed of at the dumpster, please contact the office.



## **OFFICE HOURS & TRASH SCHEDULE – THANKSGIVING WEEK**

The office will be closed on Thursday and Friday of next week, November 23<sup>rd</sup> and 24<sup>th</sup> and the maintenance staff will be off as well, however **there WILL BE trash pickup on Friday, November 24<sup>th</sup> as normal**. Please put trash out Friday morning no later than 9:30 a.m., but not the night before.

## **RESERVE EXPENSES – WEEK OF 11-6-23 thru 11-12-23**

In the interest of transparency, in this and each future newsletter, we will list any expenses paid from the Reserve Fund during the previous week, along with the beginning and ending balance of the Reserve Fund.

\$330,567.33	Reserve Fund Beginning Balance as of 11-5-23
\$ 0.00	No expenses
\$330,567.33	Reserve Fund Ending Balance as of 11-12-23

**NOTE: Maintenance staff have been trimming shrubs this week, and all shrub clippings will be picked up within the next few days. If not, please contact the office.**

**Also, holiday tree lights are being installed and will be turned on next Wednesday evening, November 22<sup>nd</sup>.**

Thank you.

Linda Adams  
Community Association Manager  
Lafayette Place Home Owners Association