

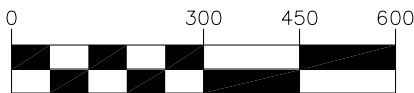
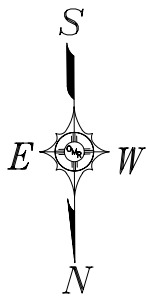


ORGAN MESA RANCH SUBDIVISION, PHASE 3

Kellie Curry
575-649-8170

Christina Major
575-642-6761

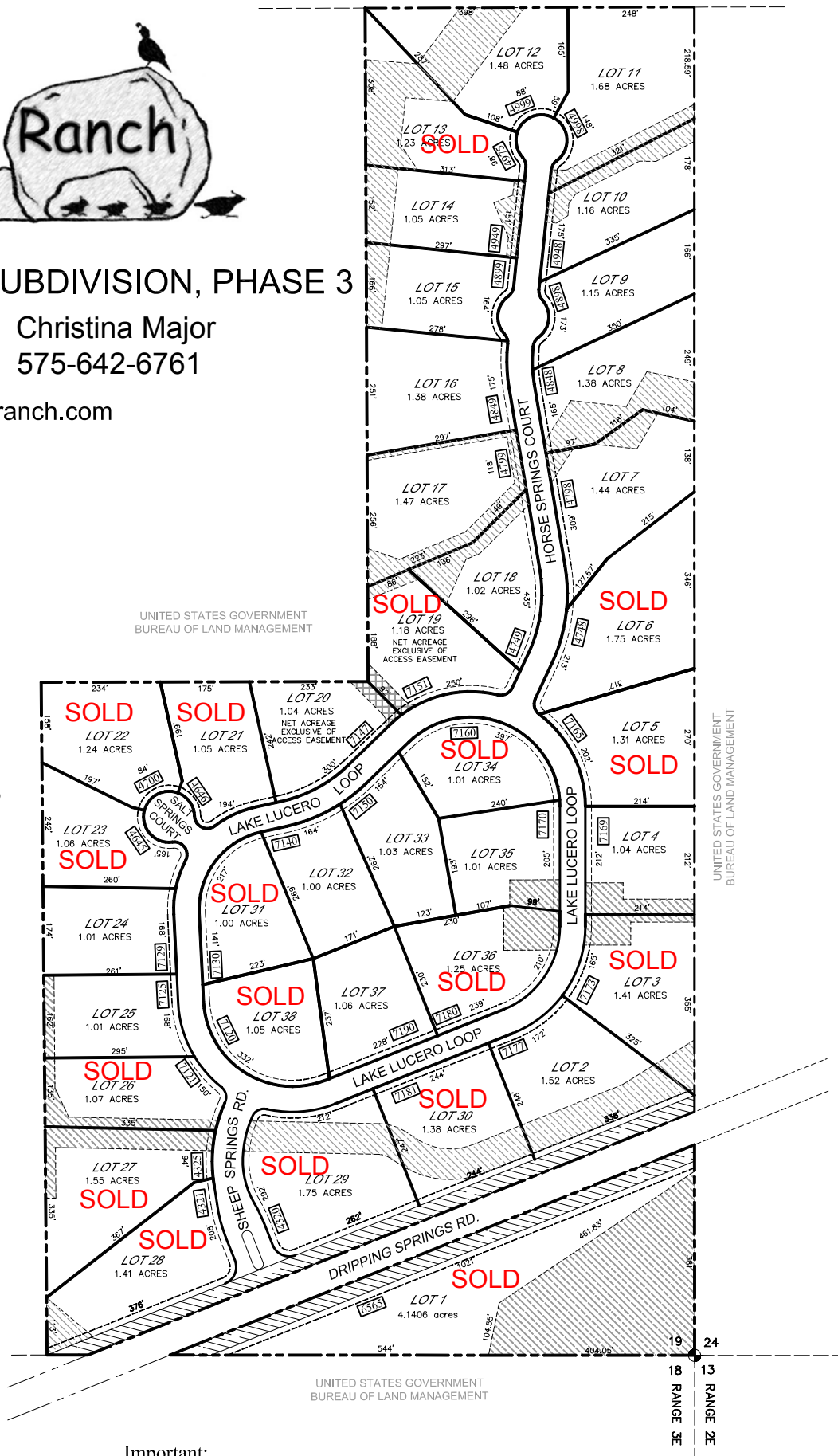
www.organmesaranch.com



1" = 300'

NOTE:
DISTANCES ARE APPROXIMATE
SEE RECORDED PLAT FOR ACTUAL
BEARING AND DISTANCE

LEGEND	
	- ADDRESS
	- DRAINAGE EASEMENTS
	- RIGHT OF WAY DEDICATION
	- 50' DRAINAGE AND BLM ACCESS EASEMENT
	- LOT BOUNDARY
	- SUBDIVISION BOUNDARY
	- UTILITY EASEMENT
	- SECTION CORNER



Important:
Prospective Purchasers are urged to review the restrictive
covenants and disclosure statements. All homes are required
to be submitted to the Architectural Control Committee.