

Organ Mesa Ranch

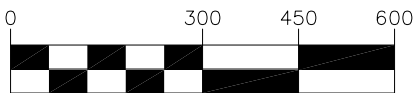


ORGAN MESA RANCH SUBDIVISION, PHASE 3

Kellie Curry
575-649-8170

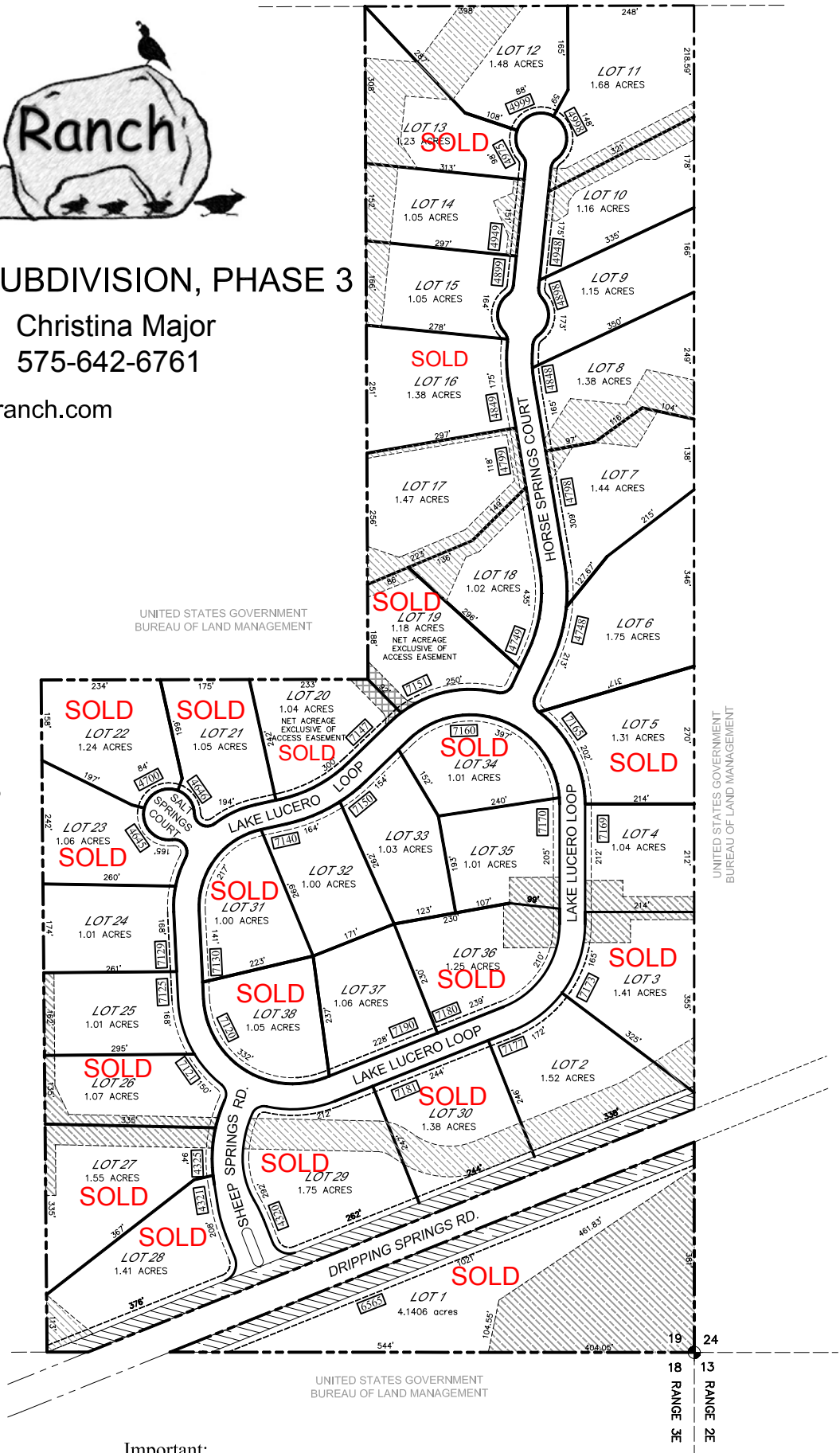
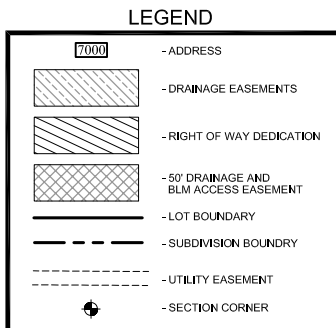
Christina Major
575-642-6761

www.organmesaranch.com



1" = 300'

NOTE:
DISTANCES ARE APPROXIMATE
SEE RECORDED PLAT FOR ACTUAL
BEARING AND DISTANCE



Important:
Prospective Purchasers are urged to review the restrictive
covenants and disclosure statements. All homes are required
to be submitted to the Architectural Control Committee.