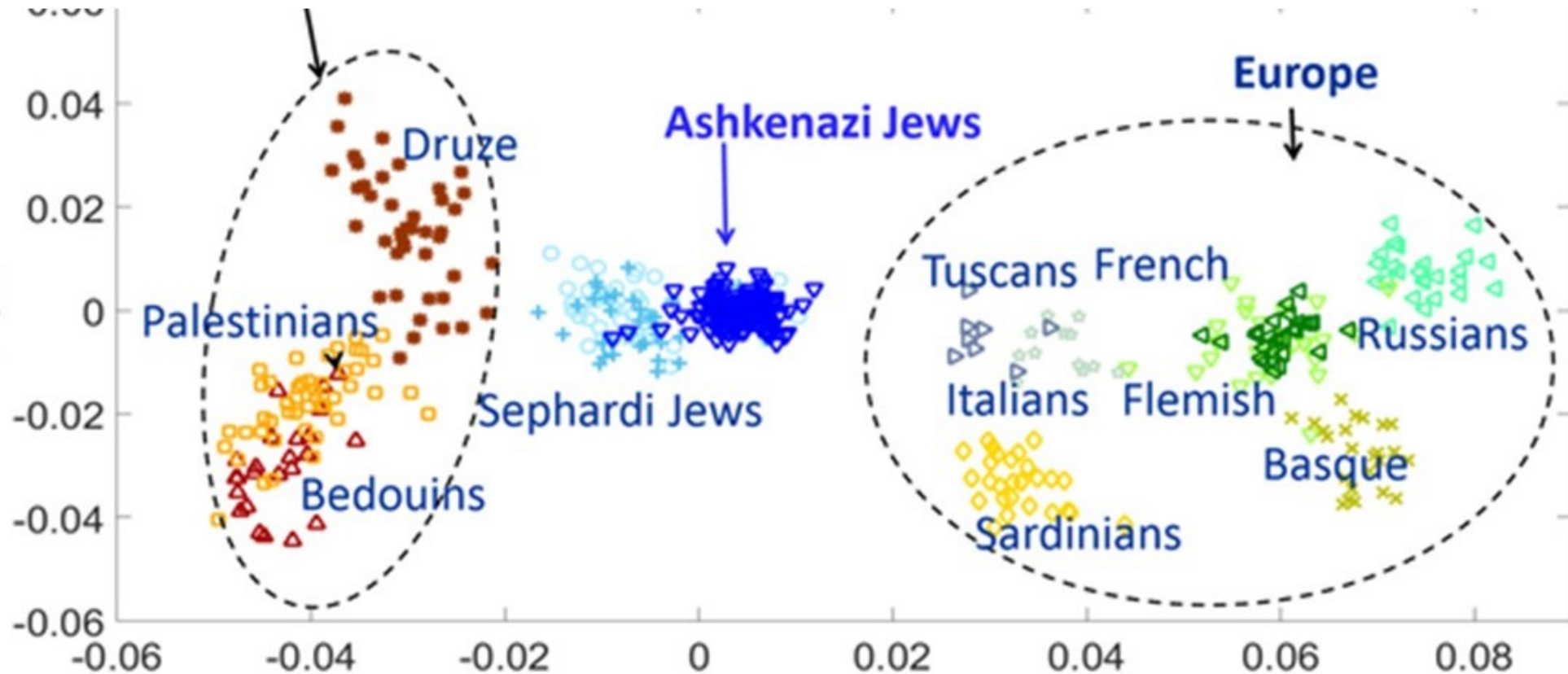


# Who Are the Jews



Who Are The Jews Lecture Notes July 18 <https://youtu.be/xFRtthK5skI> Song of Jewish Unity  
Why should we care who are the Jews?

Classic German racial anti-Semitism ,foundation of the Holocaust – coined, not against Arabs, but only against Jews by William Marr at end of 19<sup>th</sup> century

Chief theoretician: Houston Chamberlain: Foundations of the Nineteenth Century: The Jew is not a true Arab, but a mongrel race, therefore, destructive. Summary from Wikipedia:

"the modern Jew (*Homo judaeica*) mixes some of the features of the [Hittite](#) (*H. syriaca*) – notably the "[Jewish nose](#)", retreating chin, great cunning and fondness for [usury](#)<sup>[3]</sup> – and of the true [Semite](#), the [Bedouin Arab](#) (*H. arabicus*), in particular the [dolichocephalic](#) (long and narrow) skull, the thick-set body, and a tendency to be anti-intellectual and destructive.<sup>[4]</sup>

According to this theory, the product of this [miscegenation](#) was compromised by the great differences between these two stocks. The crossing between Bedouin and Syrian was — from an anatomical point of view — probably worse than that between Spaniard and South American Indian"

This Chamberlain was the great theoretician of race and the man who crowned Hitler as the Messiah of the Aryan race.

Then, we have Jews, who wanted so much to disconnect us from “Semites”. Arthur Koestler, otherwise famous for his book, The Darkness at Noon, wrote: The 13<sup>th</sup> Tribe-Ashkenazic Jews are not really ethnic Jews, but descendants of the Khazars. Therefore, we are really Turks; therefore, you can’t be an anti-Semite because we are not Semites. Some researchers claim that Yiddish is really a Turkish language.

Then we have the Palestinians, who insist we have no right to be in the land of Israel as we are white European invaders, while they are true Canaanites ( Mohammed Abbas, head of PA, Roger Waters of Pink Floyd, to name a few).

Then we have people like Farrakhan, Nick Cannon( now, changed his tune, discovering he has Jewish ancestry) ,et al. and theoreticians of black Israel-that we are imposters, that the Israelites were Africans, so we are not true Jews. "believe that [Jews](#) are devilish impostors and ...openly condemn [whites](#) as [evil](#) personified, deserving only death or slavery". ( From SPLC).

What was typical Jewish response in the 20th century to racial theory?  
a defensive posture. Jews presented countless studies showing that the physical types of Jews was so varied, that it was impossible for there to be a “ Jewish race ”, rather a people of very different origins who had adopted Judaism as a religion, maybe an ethnic cultural group, but not a “ race”,( as understood at the time, of a distinct grouping of people according to “blood).

Could it be?

Let's look at Typical Jews -Counter stereotypes :

This is a typical Ashkenazic Jew according to caricature : out of shaped, stooped, a laughable image or the frumpy yenta type.



The Jewish shlumper, also known as Kirk Douglas,  
here as Spartacus

# Issur Danielovitch



And the frumpy yenta, also known as Lauren Bacall

# Betty Joan Perske

Then, we have the weak,  
defenseless Jew



# Douglas wasn't the only Jew with a sword

- These are Mountain Jews of the Caucasus region ( Azerbaijan and vicinity), who had full respect from their Muslim neighbors ( till today, Azerbaijan has good relations with Israel).



# Of course, if you are an Arab King, you want bodyguards you can trust

---

- Abdullah I of Jordan, who didn't trust his own tribesmen, trusted these Jews from Habban ( Hadramaut-Hebrew –Hatzet Mavet- The Courtyard of Death- eastern Yemen.



# A Habbani Seder

Although neighbors to the Jews of northern Yemen, their dress is very distinct- white turban, sash across chest, and a Jambiya, or dagger, something forbidden to other Jews in Moslem realms. Their neighbors didn't bother them.

Before the rise of Islam, there was a Jewish kingdom in southern Arabia ( Yemen) and Mohammed himself at first sought support from Jewish Bedouin tribes.



# Jews are European colonialists?

- Jews came to North Africa, Tunisia and parts west, by the 1<sup>st</sup> century. Legend has it that a Jewish Queen, Dihya, led a fierce resistance to the Islamic conquest of the Maghreb (wester North Africa). Till modern times, these Berber Jews live as did the other Berber tribes.
- A Jewish Berber Woman in full regalia. Note the tattoo down nose and chin, not common in the shtetl.





## Not all historic Jews followed Judaism

Jews had a major split in the 8<sup>th</sup> century, when a “Protestant” movement( rejecting tradition and returning to the text of the Bible) arose, Karaism ( from “ Kara”, Biblical) and separated from the majority community that followed Rabbinic tradition ( Rabbanism- Mishnah and Talmud). Note- tallit and kippah, Rabbinic customs, but on the floor, Islamic style. Karaites till modern times resided in Egypt, eastern Europe, and Crimea. Now, most are in Israel.



## Then too, not all Israelites are Jews

The Samaritans separated from the rest of the Israelite world at the time of the destruction of the first Temple, and even before. Descendants of the northern tribes of Israel, they retained only the Five Books of Moses and Joshua, and use the older form of Hebrew writing.







# Of course, not all Jews are born Jews

- These residents of San Nicandro Garganico decided to convert, en masse, to Judaism, just as the Fascist came to power in Italy. Most settled in Israel.

# This community recently converted en masse to Judaism

The members of Abuyaduya ( People of Judah) movement in Uganda, came to Judaism as a group , officially in 2002, but they had begun to associate as Jews a century ago.



So, it looks like we are too divergent to be a race, or even a genetically related group, at least by our Phenotype. However, the Genotype tells a different story for Jews around the world. From high school genetics- the Phenotype is what you see, the Genotype is what's inside.

- Since Watson and Crick first cracked the DNA molecule, genetic science has been able to uncover history that till now had been surmise.
- For example- who are the Cohanim?

"If this hereditary tradition has been closely followed, the Y chromosomes of the Cohanim today should bear some resemblance to one another because of their unbroken link back to a common ancestor, Aaron.

Genetic studies among Cohanim from all over the world reveal the truth behind this oral tradition. About 50 percent of Cohanim in both Sephardic and Ashkenazic populations have an unusual set of genetic markers on their Y chromosome. What is equally striking is that this genetic signature of the Cohanim is rarely found outside of Jewish populations. Remarkably, the evidence suggests the Cohanim chromosomes coalesce at a date that corresponds with when the priesthood is thought to have begun.

<https://www.pbs.org/wgbh/nova/israel/familycohanim.html>

- Just to make things interesting, one tribe in Africa, the Lemba, in Zimbabwe, has an ancient tradition of connection with Jews- and DNA studies show the Cohen gene among them

# We are mostly cousins

- **(Summary from Wikipedia)**
- **Genetic studies on Jews** are part of the [population genetics](#) discipline and are used to better understand the chronology of migration provided by research in other fields, such as history, archaeology, linguistics, and paleontology.
- These studies investigate the origins of various [Jewish](#) populations today. In particular, they investigate whether there is a common genetic heritage among [various Jewish populations](#).

# We are alike in Warsaw and Casba! But we do "parla italiano" also!

- Studies of [autosomal DNA](#), which look at the entire DNA mixture, show that Jewish populations have tended to form relatively closely related groups in independent communities with most in a community sharing significant ancestry.
- For populations of the [Jewish diaspora](#), the genetic composition of [Ashkenazi](#), [Sephardi](#), and [Mizrahi](#) Jewish populations show significant amounts of shared Middle Eastern ancestry.<sup>[1][2][3]</sup> According to Behar and colleagues (2010), this is "consistent with a historical formulation of the Jewish people as descending from ancient [Hebrew](#) and [Israelites](#) of the [Levant](#)" and "the dispersion of the people of ancient Israel throughout the [Old World](#)".<sup>[4][5]</sup> Jews living in the North African, Italian, and Iberian regions show variable frequencies of admixture with the historical non-Jewish population along the maternal lines. In the case of Ashkenazi and Sephardi Jews (in particular [Moroccan Jews](#)), who are closely related, the source of non-Jewish admixture is mainly [southern European](#). Behar and colleagues have remarked on an especially close relationship between [Ashkenazi Jews](#) and modern [Italians](#).<sup>[4][6][7]</sup> Some studies show that the [Bene Israel](#) and [Cochin Jews](#) of [India](#), and the [Beta Israel](#) of [Ethiopia](#), while very closely resembling the local populations of their native countries, may have some ancient Jewish descent.<sup>[5]</sup> (Summary from Genetic Studies on Jews- Wikipedia)
- ( A friend of mine, whose family is Moroccan, was surprised to find some Italian DNA!)

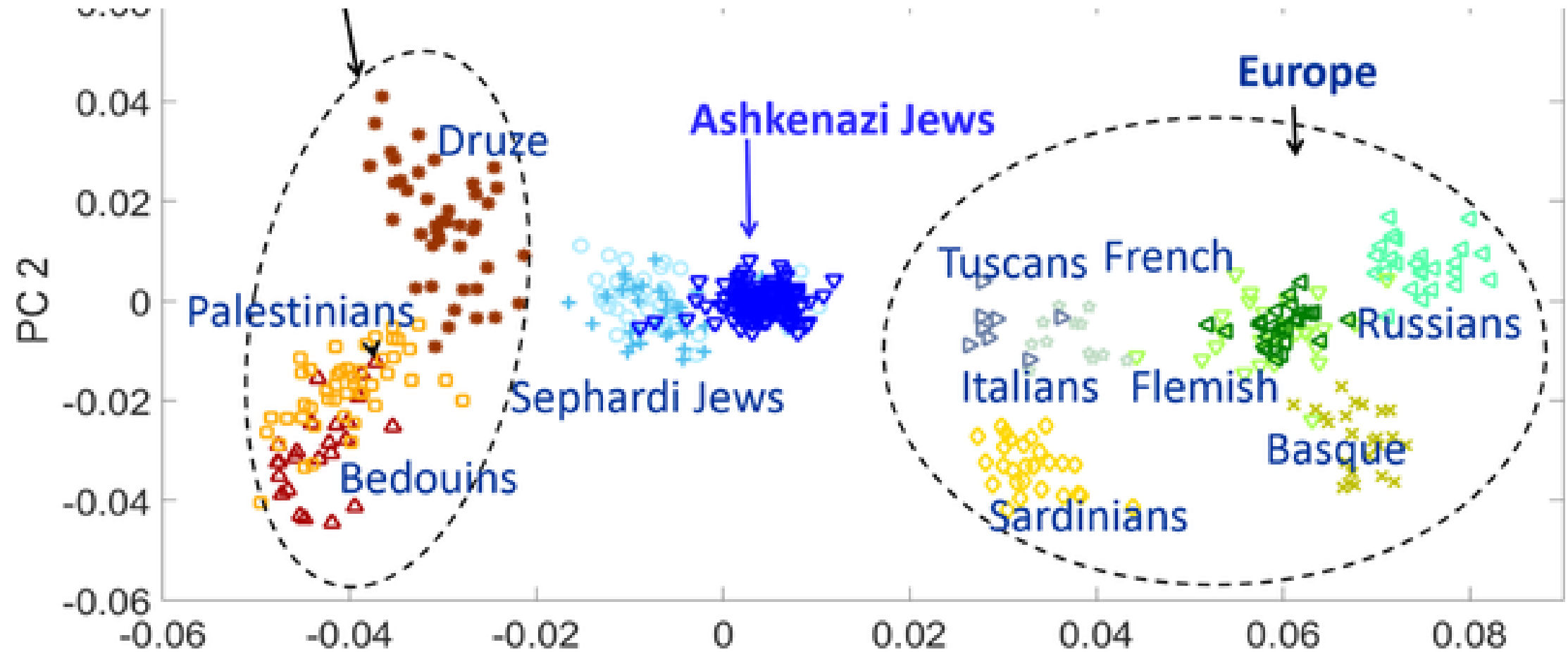
# Like the Druze!!

- In June 2010, Behar et al. "shows that most Jewish samples form a remarkably tight subcluster with common genetic origin, that overlies Druze and Cypriot samples but not samples from other Levantine populations or paired Diaspora host populations. In contrast, Ethiopian Jews (Beta Israel) and Indian Jews (Bene Israel and Cochin) cluster with neighboring [autochthonous](#) populations in Ethiopia and western India, respectively, despite a clear paternal link between the Bene Israel and the Levant." [\[4\]](#)[\[11\]](#)
- "The most parsimonious explanation for these observations is a common genetic origin, which is consistent with an historical formulation of the Jewish people as descending from ancient Hebrew and Israelite residents of the Levant." [\[4\]](#)

We are all more closely related to each other than to our neighbors, even though we look different!

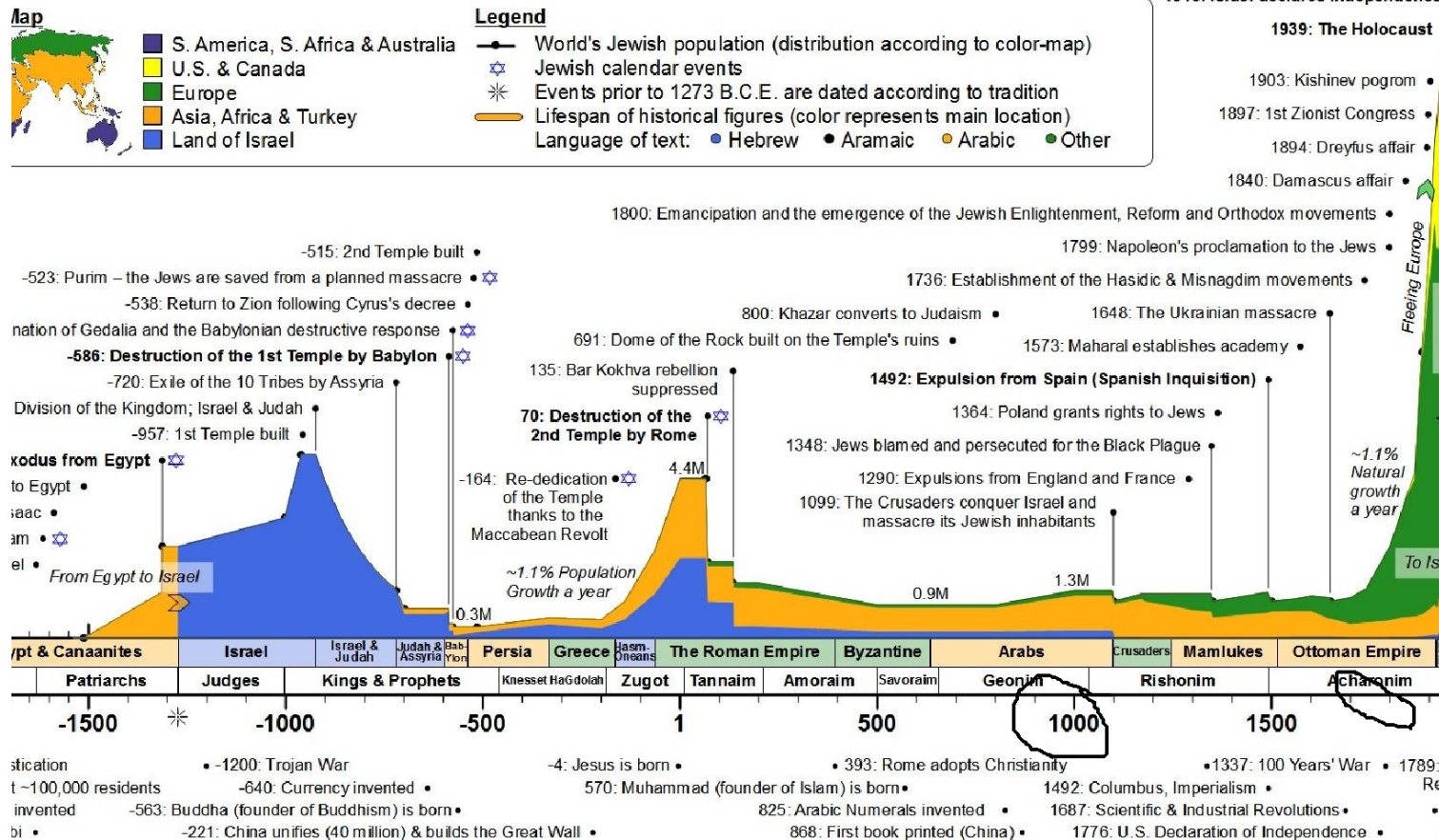
- Ashkenazi, Sephardi, and Mizrahi Jews were found to be closer genetically to each other than to their long-term host populations, and all of them were found to have Middle Eastern ancestry, together with varying amounts of admixture in their local populations. Mizrahi and Ashkenazi Jews were found to have diverged from each other approximately 2,500 years in the past, approximately the time of the [Babylonian exile](#). The studies also reconfirmed the results of previous studies which found that North African Jews were more closely related to each other and to European and Middle Eastern Jews than to their non-Jewish host populations.,<sup>[91]</sup>

What's it look like when you graph Jewish communities alongside their neighbors?



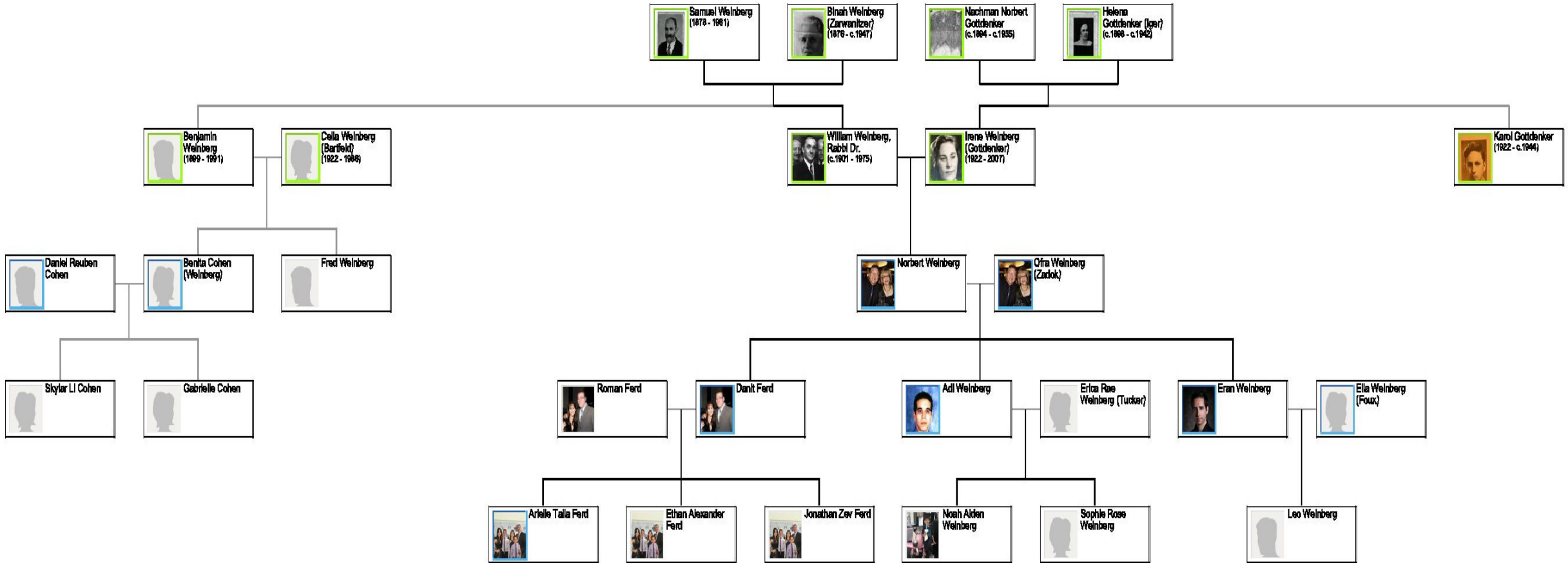


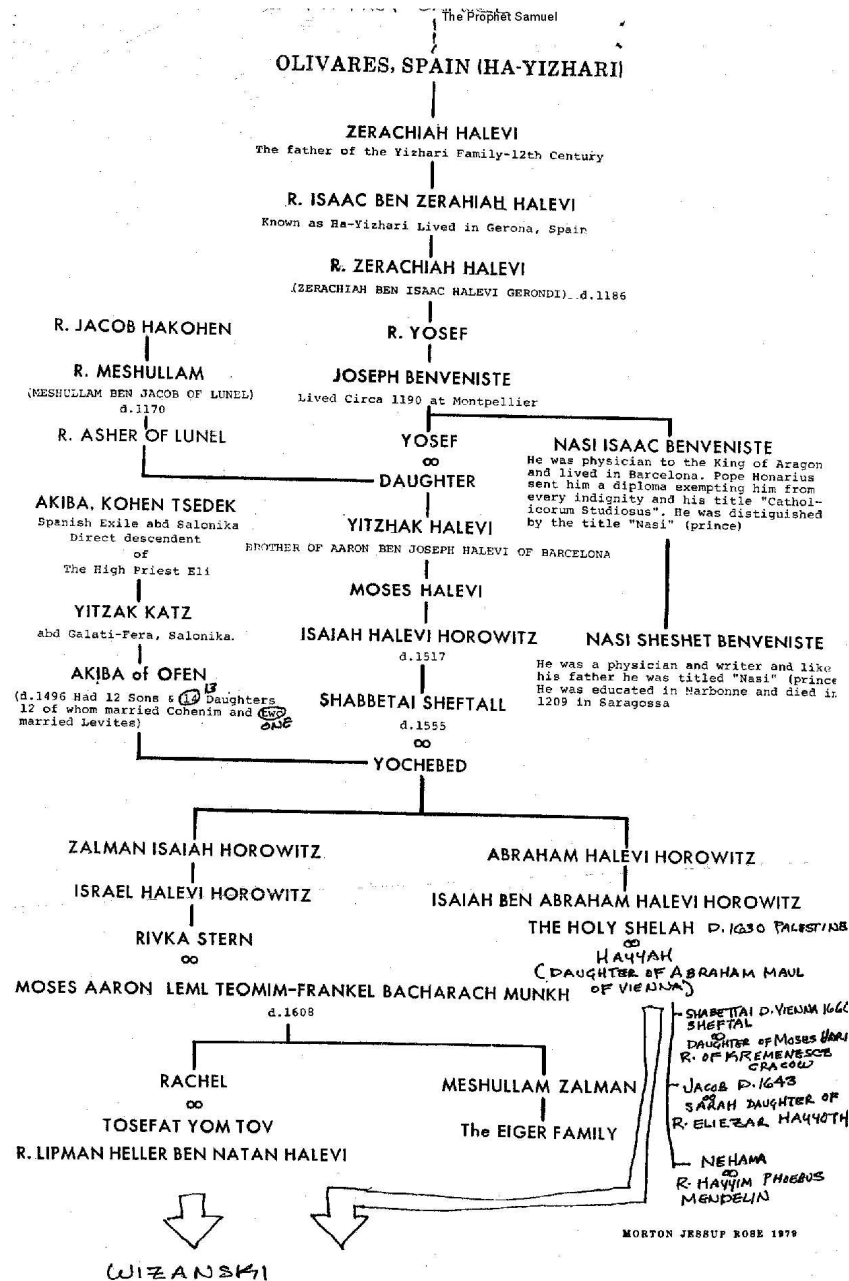
# Timeline of Jewish History and Heritage



The great Ashkenazi question- where did they come from. Around 1000, only a few hundred families-Green lines. Starting 1800-a massive surge- all cousins!

The Weinberg-Iger clan-Jews tended to marry inside the family. Grandmother Binah's father, Moses was grandfather to my mother's father. Grandmother Helena's ancestors were Binah's ancestors.





My father's  
side

My mother's  
side

Once you find a known Rabbi in the tree, you are related to all other major Rabbis of Europe, as well as many notables. Rabbi Akiva Eiger was the renowned scholar of his day and fathered many children! One of many great-granddaughters was my mother, Irene. He is my 3<sup>rd</sup> great-grandfather.

Descendants of Rabbi Akiva Eger (4 generations)

Exported from [Geni.com](#) on Jul 15, 2020 at 11:00 PM

1. [Rabbi Akiva Eger](#) b. October 29, 1761, Eisenstadt, Eisenstadt-Umgebung District, Burgenland, Austria; d. October 12, 1837, Poznań, Poznań County, Greater Poland Voivodeship, Poland
2. [Sarah Eiger](#)
2. [Sheindel Davidson](#) b. 1778, Lisa, Delitzsch, Leipzig, Saxony, Germany; d. circa 1797, Bydgoszcz, Bydgoszcz County, Kuyavian-Pomeranian Voivodeship, Poland
2. [Rabbi Avraham Eger, Rabbi of Rawitch](#) b. circa December 1781, Leszno, Leszno County, Greater Poland Voivodeship, Poland
2. [Rabbi Shlomo Gins Schlesinger Eger](#) b. 1785, Leszno, Greater Poland, Poland; d. January 3, 1852, Lissa, Poland
2. [Sorel-Sarah Schreiber-Sofer Kalischer \(Eger\) \[2nd wife\]](#) b. 1788, Mirosławiec, Wałcz County, West Pomeranian Voivodeship, Poland; d. March 20, 1832, Bratislava, Bratislava Region, Slovakia
2. [Zipora Zipre Eger](#) b. Friedland; d. 1799, Mirosławiec, Wałcz County, West Pomeranian Voivodeship, Poland
2. [Moses Jakob Eiger](#) b. 1799, Warsaw, Poland; d. 1879, Warsaw, Poland
2. [Rodisch Schiff \(Eger\)](#) b. 1803, Posen, Friedland, Lower Saxony, Germany; d. August 12, 1884, Posen, Prussia
2. [Benjamin Wolf Eger \(Günsz\)](#) b. January 20, 1805, Friedland, Mecklenburg-Vorpommern, Deutschland (Germany); d. October 29, 1891, Berlin, Berlin, Germany
2. [Hadassah Rosanes](#) b. 1806, Friedland; d. Brody
2. [Feivelman Eger](#) b. 1807, Friedland, Lower Saxony, Germany; d. 1808, Friedland, Lower Saxony, Germany
2. [Gittel Henrietta Kornfeld](#) b. 1808, Friedland, Lower Saxony, Germany; d. May 5, 1891, Breslau, Poland
2. [Rebekka Rivka Birenbaum Schlusel](#) b. 1812, Friedland, Lower Saxony, Germany; d. 1884, Dubnow, Poland
2. [Frieda Gradsztein](#) b. 1814, Posen, Germany (East Prussia); d. 1877, Lublin, Poland
2. [Shmuel Yaacov Eger](#) b. 1818, Poznań, Greater Poland, Poland; d. Minsk, Minsk Province, Belarus
- L + [Clara Sarah Eger](#)
3. [Nathan \(Nissim\) Iger](#) b. 1857; d. Pidvolochys'k, Pidvolochys'kyi district, Ternopil's'ka oblast, Ukraine
- L + [Chaja Iger](#)
4. [Jozef Iger](#) b. August 31, 1887, Podwólóczyska, Tarnopol, Austria; d. December 1942, Auschwitz, Poland
4. [Helena Gottdenker](#) b. circa 1898, Podwólóchisk, Khmel'nyts'ka, Ukraine; d. circa 1942, Piaski Ravine, Lviv Oblast, Ukraine
4. [Dora Kitzav](#) d. 1976
4. [Julian Iger](#)
4. [Jakub Iger](#)
2. [Bunim Simha Eger](#) b. 1821, Poznań, Poland; d. 1867, Brzezany, Poland
2. [Beila Rosanes](#) b. 1822, Posen; d. 1899, Brody
2. [Isak Loeb Eger](#) b. Poznan, Greater Poland, Poland; d. 1871, Johannesburg, Germany

Irene Weinberg-Rabbi N Weinberg

MyHeritage identified 16,000 people who are cousins of the 3<sup>rd</sup> or more remove. I can identify only 2 of them! If I go to 3<sup>rd</sup> cousin, assuming 5 viable children each generation, I would have only 125, to the 5<sup>th</sup>, only 3125! That makes family tracing among Jews impossible.

The screenshot shows the MyHeritage website's DNA Matches page. The navigation bar at the top includes Home, Family tree, Discoveries, DNA (highlighted), Health, and Research. Below the navigation bar, the page title is "DNA Matches" and the sub-navigation includes Overview, Ethnicity Estimate, and Tools. The main content area shows "Showing 16,281–16,282 of 16,282 DNA Matches". There are filters for "All tree details", "All relationships", "All locations", and "All ethnicities". The first match is for Fabrice Pincon, a 50-year-old from France, with an estimated relationship of "3rd cousin - distant cousin" (Low confidence). The DNA match quality is 0.2% (12.0 cM) with 1 shared segment and a largest segment of 12 cM. The second match is for Lisa Friedman, a 50-year-old from the USA, with the same estimated relationship and DNA match quality. She appears in a family tree with 38 people managed by Brian Gaffney from the USA. Ancestral places common to the user and Lisa Friedman include New York, USA. The page has a pagination bar at the bottom showing page 1 of 1,625, with a "Go to page" field and "Results per page: 10".

MyHeritage

Home | Family tree | Discoveries | **DNA** | Health | Research

Overview | Ethnicity Estimate | **DNA Matches** | Tools

Showing 16,281–16,282 of 16,282 DNA Matches

Filters | Sort by | Search

All tree details | All relationships | All locations | All ethnicities

**Fabrice Pincon**  
Age: 50's  
From: France  
[Contact Fabrice](#)

Estimated relationships  
**3rd cousin - distant cousin**  
Low confidence

DNA Match quality  
Shared DNA: 0.2% (12.0 cM)  
Shared segments: 1  
Largest segment: 12 cM

[Review DNA Match](#)

Fabrice Pincon is currently not associated with a family tree on MyHeritage. You can contact him for more information.

**Lisa Friedman**  
Age: 50's  
From: USA  
[Contact Lisa](#)

Estimated relationships  
**3rd cousin - distant cousin**  
Low confidence

DNA Match quality  
Shared DNA: 0.2% (12.0 cM)  
Shared segments: 1  
Largest segment: 12 cM

[Review DNA Match](#)  
[View tree](#)

Appears in a family tree with 38 people, managed by Brian Gaffney from USA

Ancestral places common to you and Lisa Friedman include New York, USA.

< 1 ... 1,625 1,626 1,627 1,628 **1,629** > | Go to page

Results per page: 10



You get interesting relatives!

Jesus

Follow

Actions ▾

This is the **Master Profile** for Jesus.  
**Curator Note from Sharon Lee Doubell (4/5/2016):**  
Jesus  
Central figure of the Christian religion  
Please don't give him a wife - there are not sources to prove this

You are connected to Jesus.



Shortest blood relationship

Jesus is your 10th cousin 62 times removed.



# Or in Islam

## Prophet Muhammad of Islam (PBUH)

[Follow](#)[Actions ▾](#)

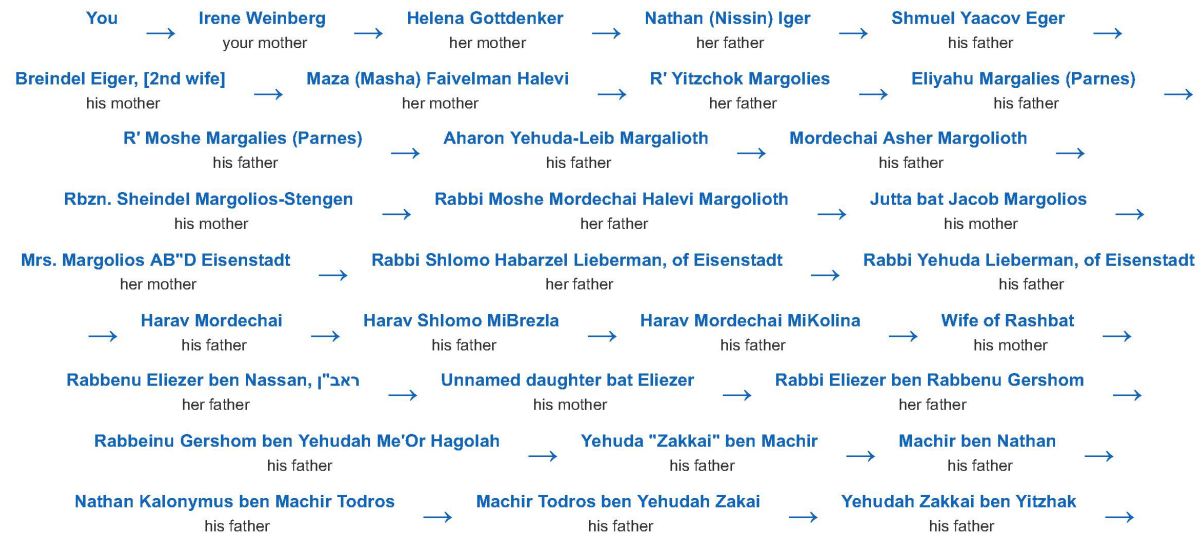
This is the **Master Profile** for Prophet Muhammad of Islam (PBUH).  
**Curator Note from [Rehan Allahwala](#) (9/2/2010):**  
Please do not edit this profile

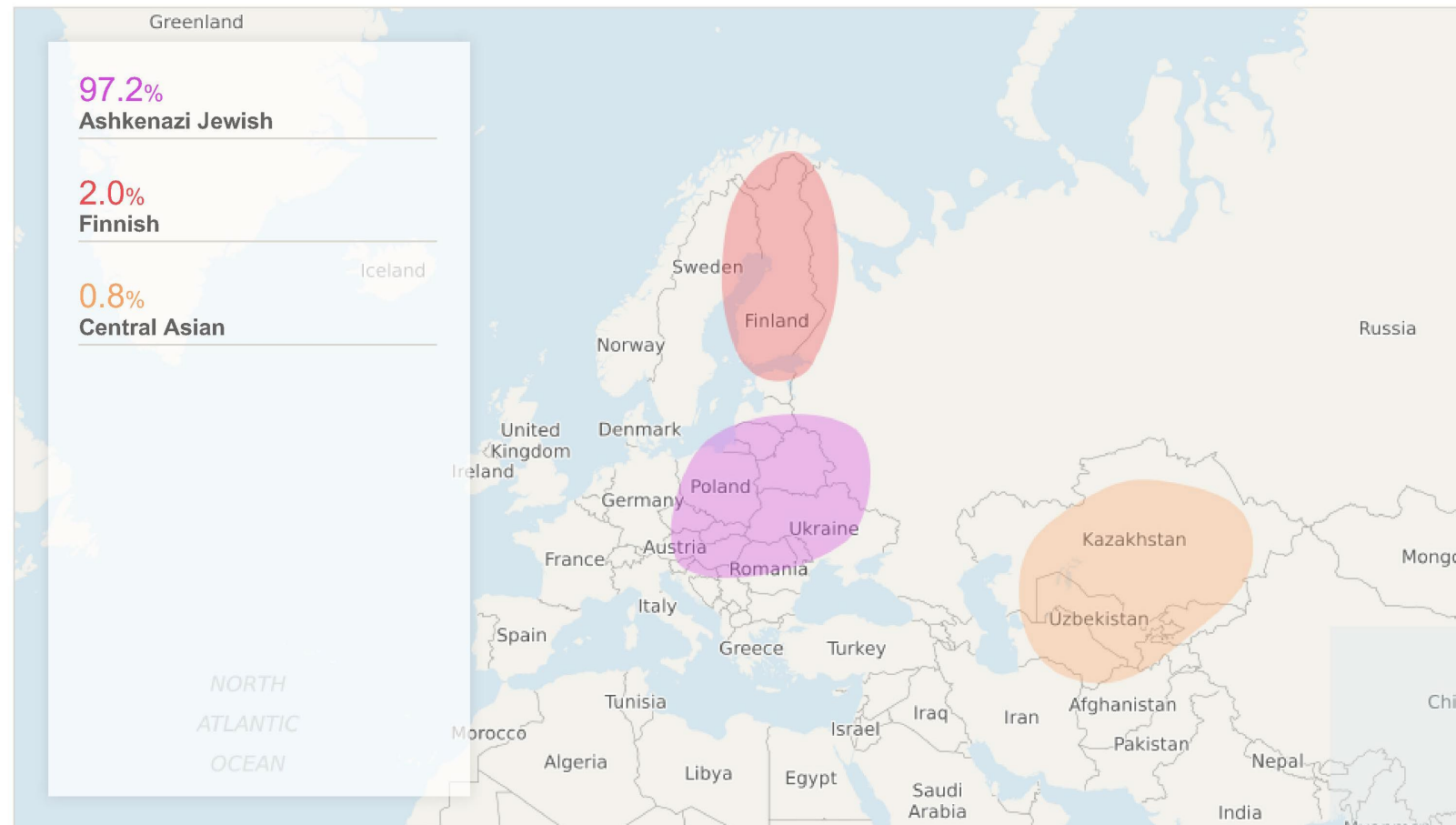
You are connected to Prophet Muhammad of Islam (PBUH).



*Shortest blood relationship*

Prophet Muhammad of Islam (PBUH) is your second cousin 36 times removed.





97.2%  
Jewish- with  
a little Finn  
and Kazakh  
to boot



DNA results can be  
pretty startling-Like  
88% Palestinian

<https://youtu.be/JldADujEf2g>  
Beyachad

## EthioHelix K10 + Palestinian Admixture Proportions

EthioHelix Africa K10 + Palestinian - Palestinian acts as a proxy for Middle Eastern ancestry in this case. Results are currently most meaningful for persons who are a mix of African and Middle Eastern. For more information, see the [Blog Post](#). In particular, see the Africa\_V2 run at the bottom of the page, as that is the specific run that these results are based on. That way, you can see the exact steps taken to achieve these results. Also, see the [Gradient Maps](#) to get a better picture of how the clusters are spatially distributed. Software Version: Jun 2 2019 19:25:23

Kit Number: LU8019744 Elapsed Time: 0.94 seconds

[Spreadsheet](#)

Population

Nilo-Saharan	0.64
	Pct
East-Africa1	-
Mbuti-Pygmy	-
Eastern-Bantu	-
Khoi-San	0.63
	Pct
West-Africa	-
Hadza	0.11
	Pct
Biaka-Pygmy	1.99
	Pct
Palestinian	88.25
	Pct
Omotic	8.38
	Pct

[Oracle](#)

[Oracle-4](#)

UNDER  
DEVELOPMENT:

[Rotating 3D-PCA](#)

