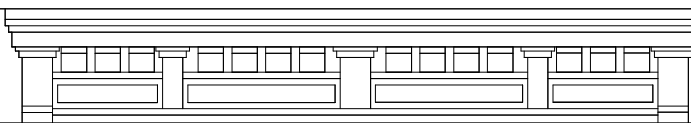

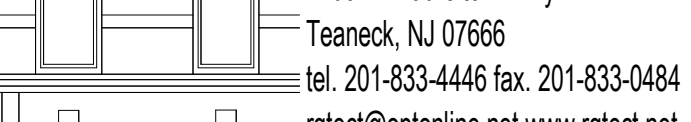
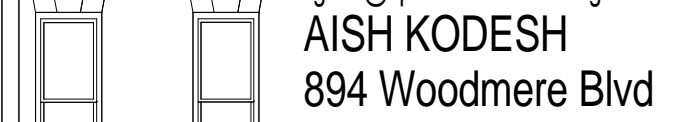


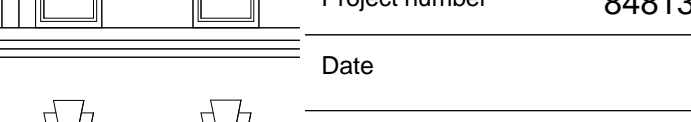
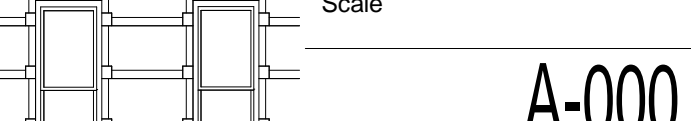
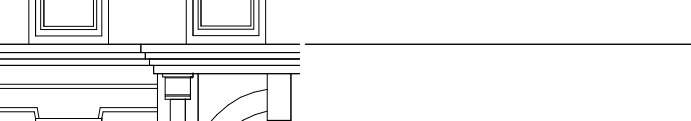


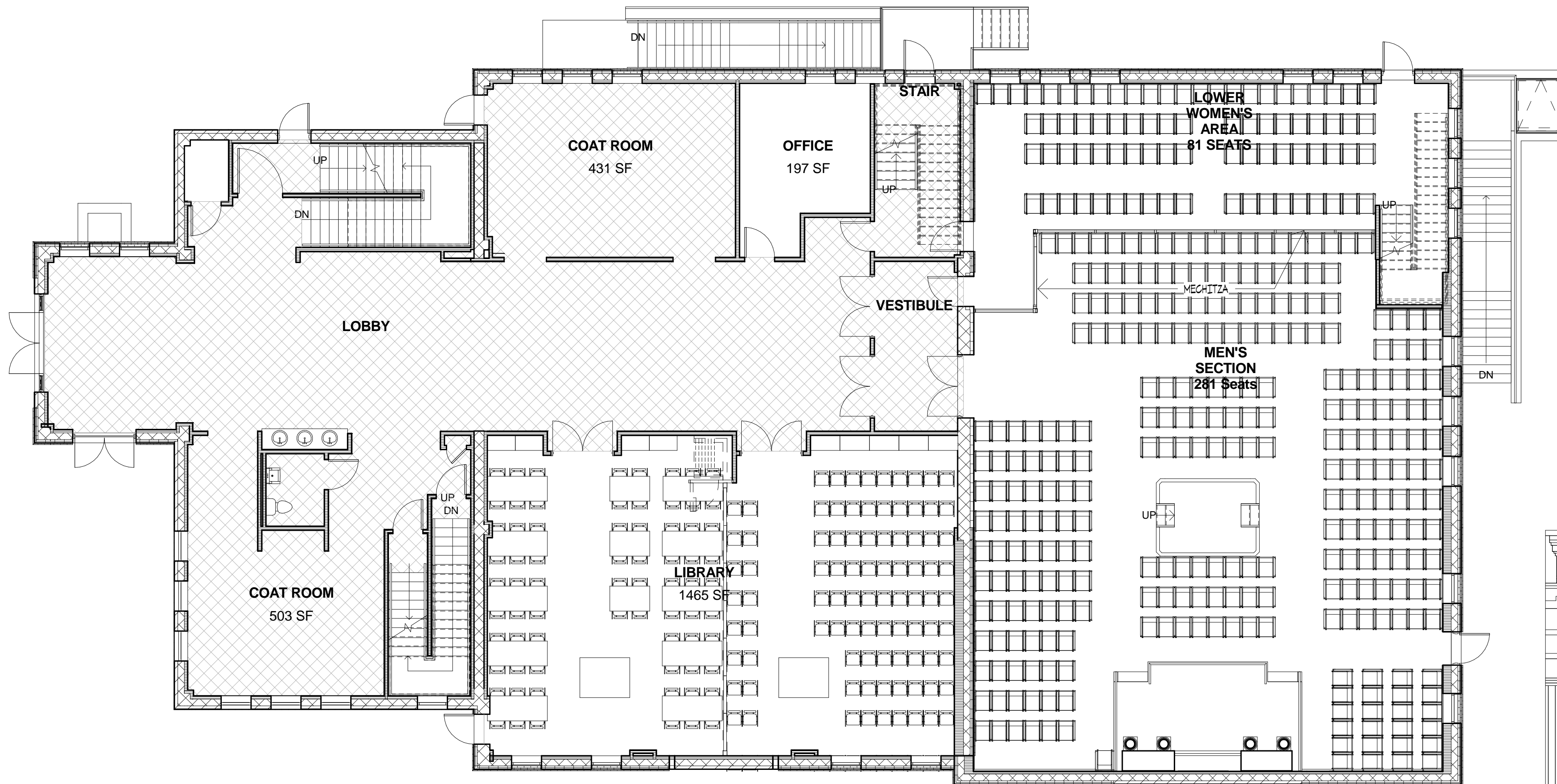


CONGREGATION AISH KODESH

WOODMERE PLACEWOODMERE, NY



	Reuben Gross Associates, Architects, PA 1205 W. Laurelton Pkwy. Teaneck, NJ 07666 tel. 201-833-4446 fax. 201-833-0484 rgtect@optonline.net www.rgtect.net
	AISH KODESH 894 Woodmere Blvd Woodmere, NY
	TITLE SHEET
	Project number 84813
	Date
	Scale
	A-000
	
	
	
	



1 FIRST FLOOR PLAN
1/8" = 1'-0"

**Reuben Gross Associates,
Architects, PA**

1205 W. Laurelton Pkwy.
Teaneck, NJ 07666
tel. 201-833-4446 fax. 201-833-0484
rgtect@optonline.net www.rgtect.net

AISH KODESH
894 Woodmere Blvd
Woodmere, NY

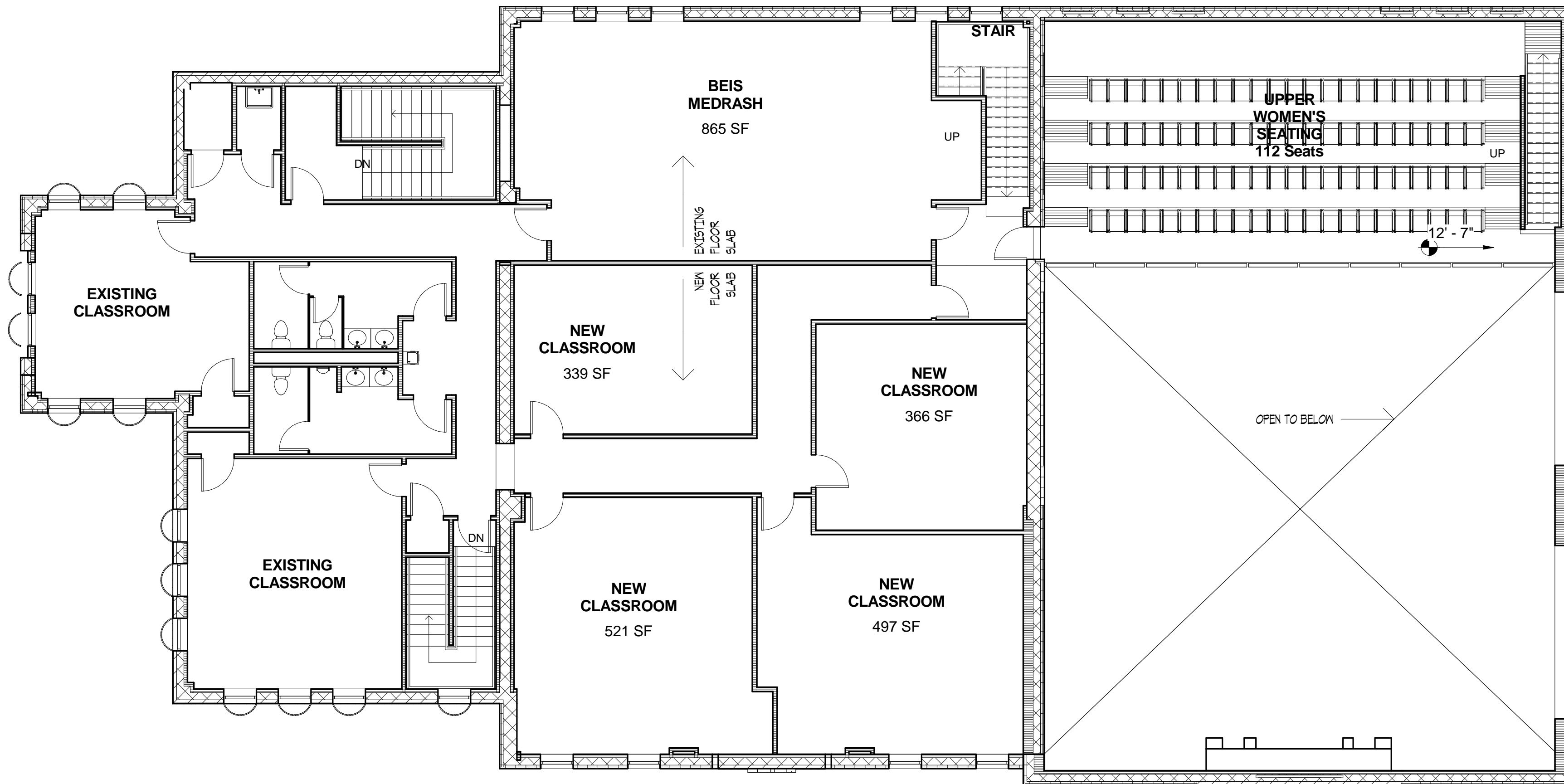
1st Floor Plan

Project number 84813

Date

Scale 1/8" = 1'-0"

A-101



1 SECOND FLOOR PLAN
1/8" = 1'-0"

**Reuben Gross Associates,
Architects, PA**
1205 W. Laurelton Pkwy.
Teaneck, NJ 07666
tel. 201-833-4446 fax. 201-833-0484
rgtect@optonline.net www.rgtect.net

AISH KODESH
894 Woodmere Blvd
Woodmere, NY

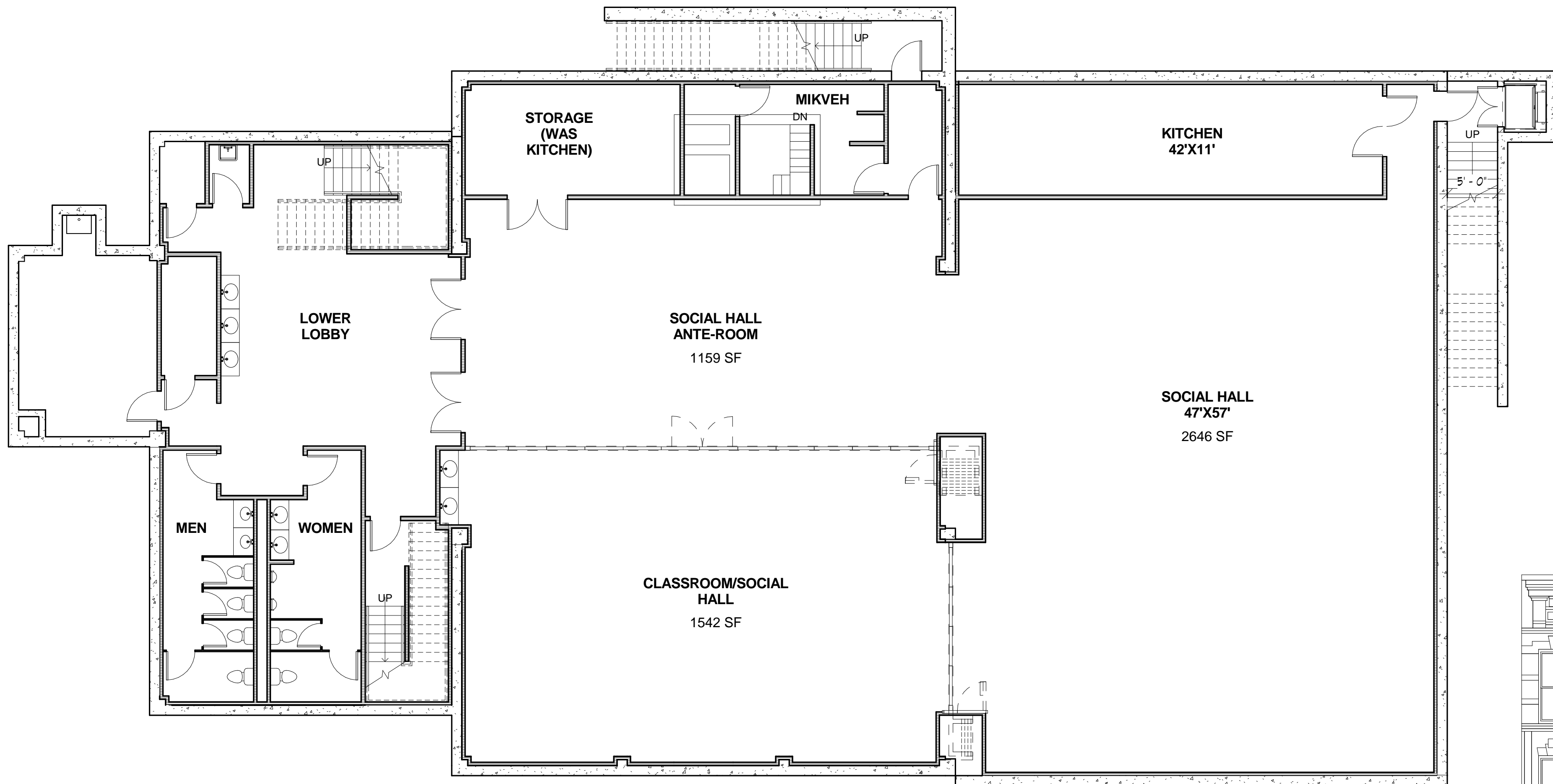
**SECOND FLOOR
PLAN**

Project number 84813

Date

Scale 1/8" = 1'-0"

A-102



① CELLAR PLAN
1/8" = 1'-0"

**Reuben Gross Associates,
Architects, PA**
1205 W. Laurelton Pkwy.
Teaneck, NJ 07666
tel. 201-833-4446 fax. 201-833-0484
rgtect@optonline.net www.rgtect.net

AISH KODESH
894 Woodmere Blvd
Woodmere, NY

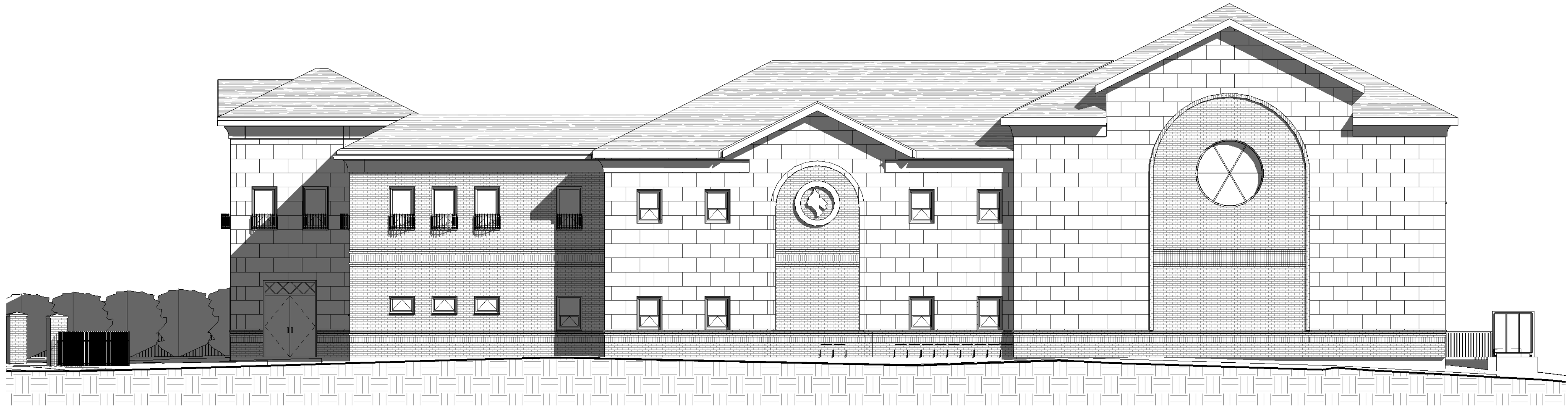
Cellar Plan

Project number 84813

Date

Scale 1/8" = 1'-0"

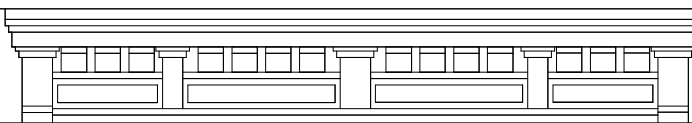
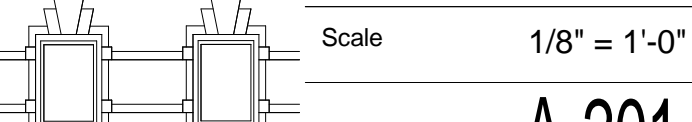
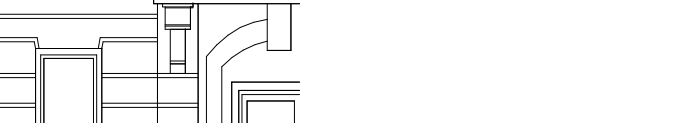
A-103

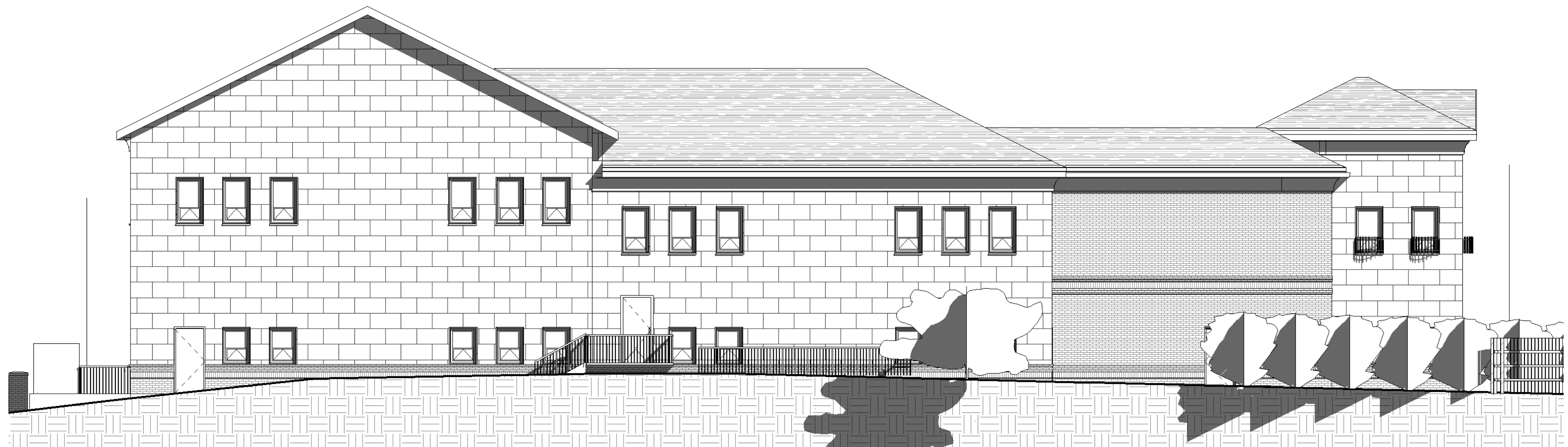


① EAST ELEVATION
1/8" = 1'-0"

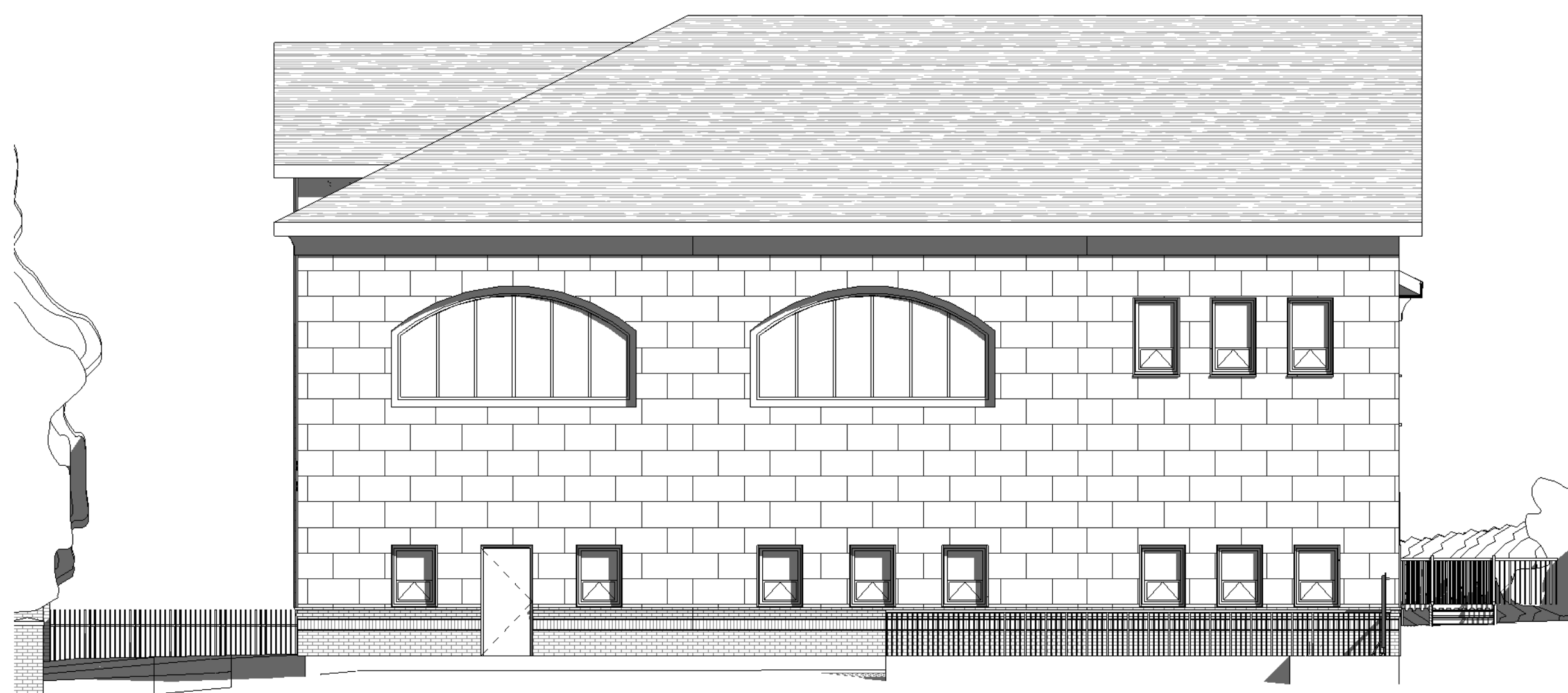


④ SOUTH ELEVATION
1/8" = 1'-0"

	
<p>Reuben Gross Associates, Architects, PA 1205 W. Laurelton Pkwy. Teaneck, NJ 07666 tel. 201-833-4446 fax. 201-833-0484 rgtect@optonline.net www.rgtect.net</p>	
<p>AISH KODESH 894 Woodmere Blvd Woodmere, NY</p>	
<p>South and East Elevations</p>	
Project number	84813
Date	
Scale	1/8" = 1'-0"
<p>A-201</p>	
	
	

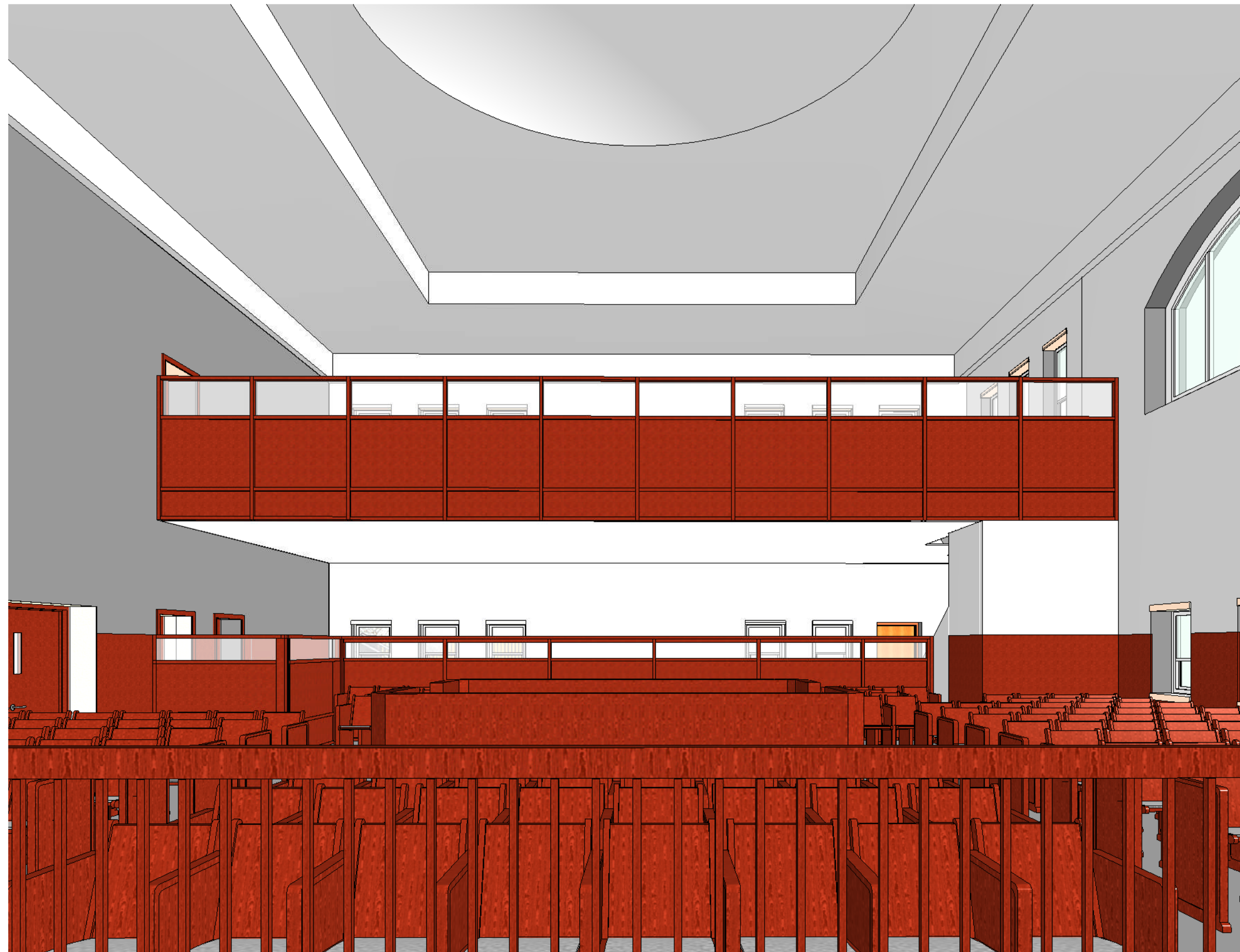


② WEST ELEVATION
1/8" = 1'-0"

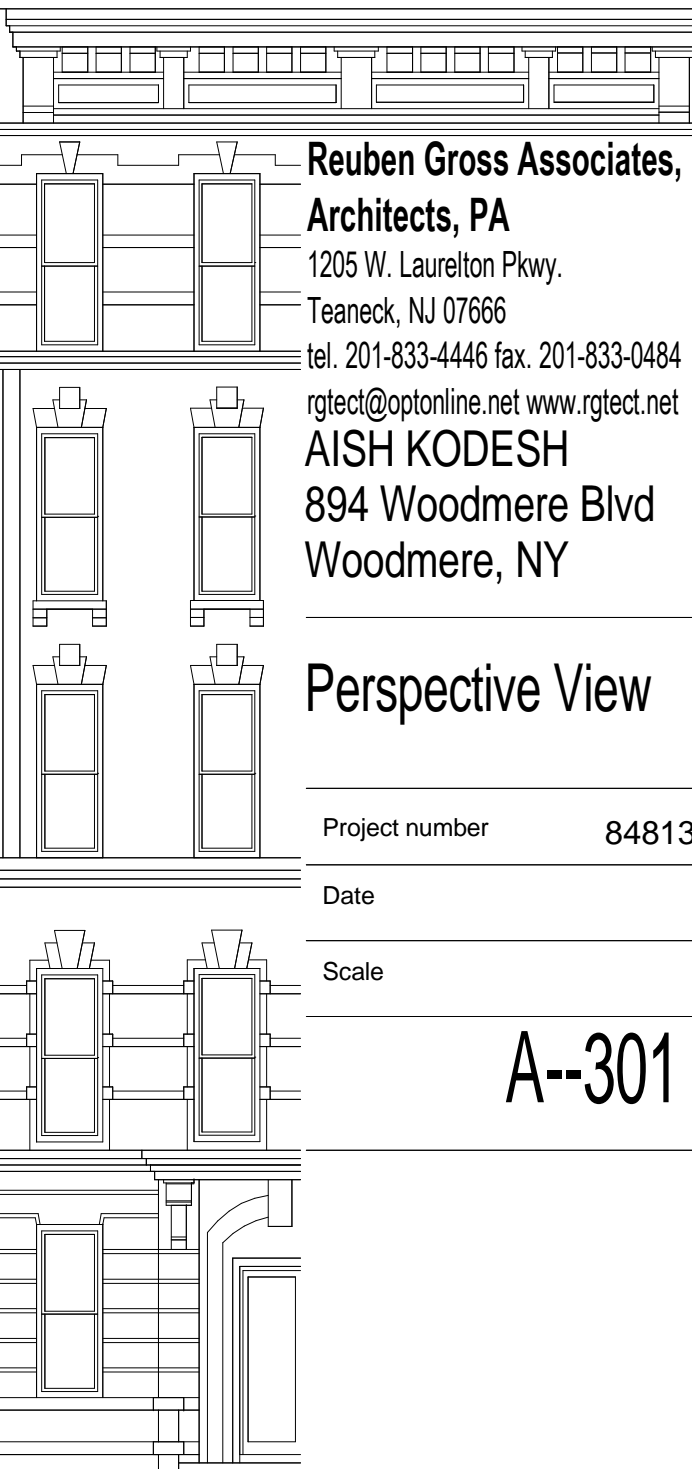


① NORTH ELEVATION
1/8" = 1'-0"

<p>Reuben Gross Associates, Architects, PA 1205 W. Laurelton Pkwy. Teaneck, NJ 07666 tel. 201-833-4446 fax. 201-833-0484 rgtect@optonline.net www.rgtect.net</p>	
<p>AISH KODESH 894 Woodmere Blvd Woodmere, NY</p>	
<p>North and West Elevations</p>	
Project number	84813
Date	
Scale	1/8" = 1'-0"
<p>A-202</p>	



① View From Aron Toward Rear



**Reuben Gross Associates,
Architects, PA**
1205 W. Laurelton Pkwy.
Teaneck, NJ 07666
tel. 201-833-4446 fax. 201-833-0484
rgtect@optonline.net www.rgtect.net

AISH KODESH
894 Woodmere Blvd
Woodmere, NY

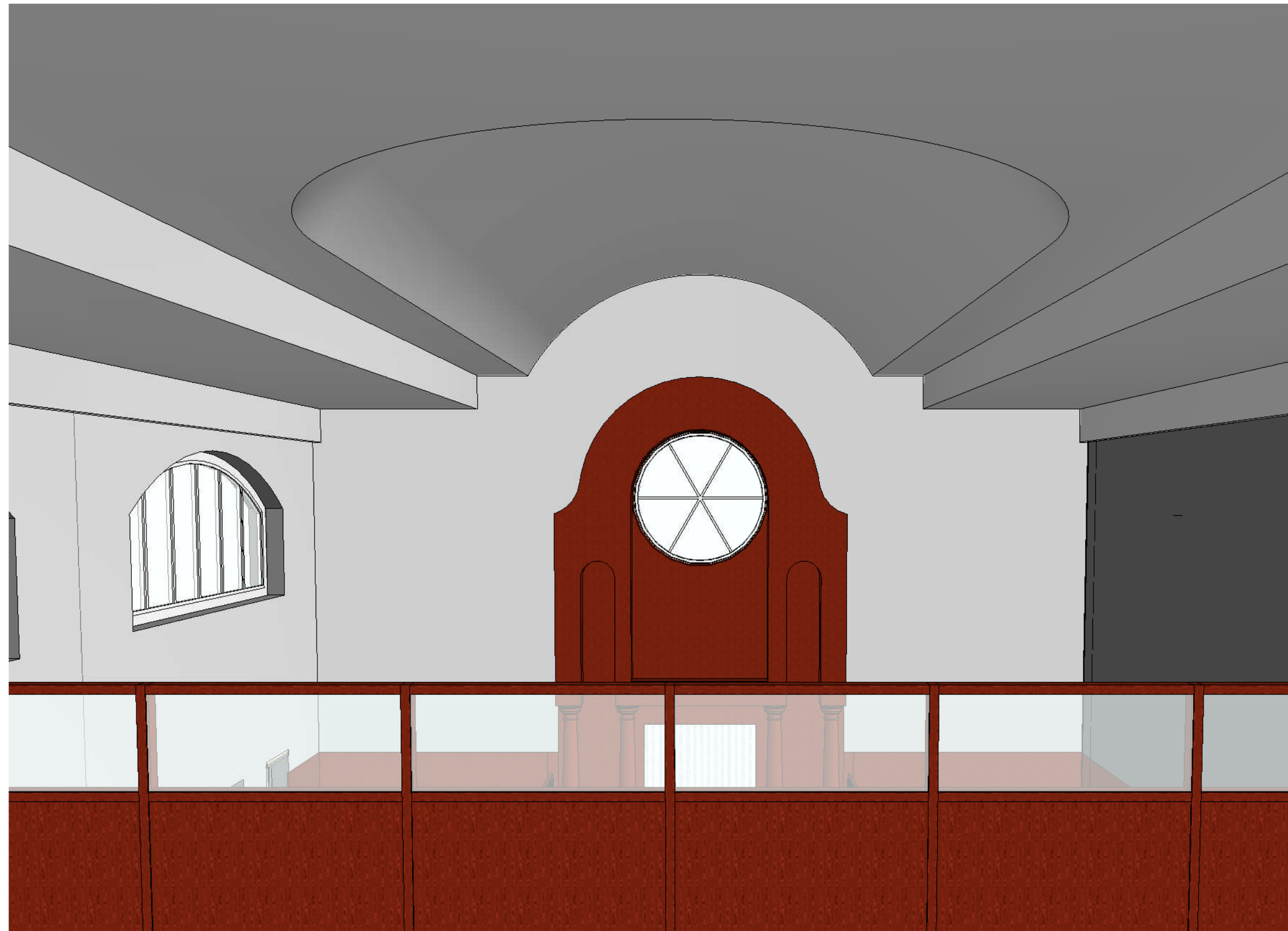
Perspective View

Project number 84813

Date

Scale

A--301



① View From Balcony to Aron

 An architectural elevation drawing of a building facade, showing classical architectural details such as columns, arches, and decorative moldings. The drawing is positioned to the right of the main rendering.

**Reuben Gross Associates,
Architects, PA**
1205 W. Laurelton Pkwy.
Teaneck, NJ 07666
tel. 201-833-4446 fax. 201-833-0484
rgtect@optonline.net www.rgtect.net

AISH KODESH
894 Woodmere Blvd
Woodmere, NY

Persepective View

Project number 84813

Date

Scale

A--302