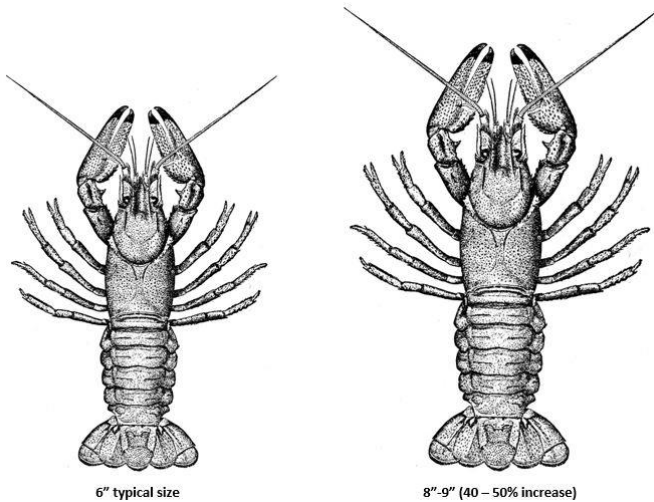


## CRAWFISH Case Study



A recent study was done over a 2-year period of pre-treating pond water with OXYBOM™ that crawfish habituated. This process allowed the crawfish to grow in less time and increase in size by as much as 40 – 50% (see photo on left).

The OXYBOM™ technology adds a form of oxygen (ROS) to the water that ended in unprecedented results. A typical 6" crawfish grew to anywhere from 8" – 9" and required no purging. The taste was better as well. The increase in dissolved oxygen was a big factor.

In several, long-term studies in Louisiana, Vietnam and Norway...members of the aquaculture industry have been studying the effects of increasing the oxidative energy using Reactive Oxygen Species (ROS) to increase their yields. Using 3.0 mg/l (0.5 gal) to 5.0 mg/l (1.0 gal) per acre foot in freshwater, OXYBOM™, an earth-friendly formulation, has provided crawfish farmers a way to increase their profits by 40%; generate 50% more meat per unit; along with improving overall taste. The cooler (storage) shelf-life is 10 – 15 days vs. 3 – 5 days historically.

On a 600-acre farm, one grower observed that by increasing water clarity and minimizing foul odors using OXYBOM™, he was able to get to market sooner and the adult crawfish were larger. This meant higher profits per year with 3 cycles vs. 2 cycles in a season. Customers were willing to pay a higher price for the larger crawfish as the taste and volume of meat was better. So, what is ROS exactly?

Oxygen has many forms. ROS is one of those forms that converts into hydroxyl radical ions (OH<sup>-</sup>). Hydroxyl radical ions develops the highest oxidative energy, commercially available. This oxidative energy quickly removes organic and inorganic contaminants to improve water quality in the aquatic environment. The aquatic animals use less of their life energy for survival and more for growth & development. The results are larger, healthy and better-tasting crawfish. OXYBOM™ acts like a steroid – in a healthy way – you might say.



*9" knife next to new crop*

**To learn more, contact us: [help@oxybom.com](mailto:help@oxybom.com) / 979.209.0576**

**OXYBOM.com**