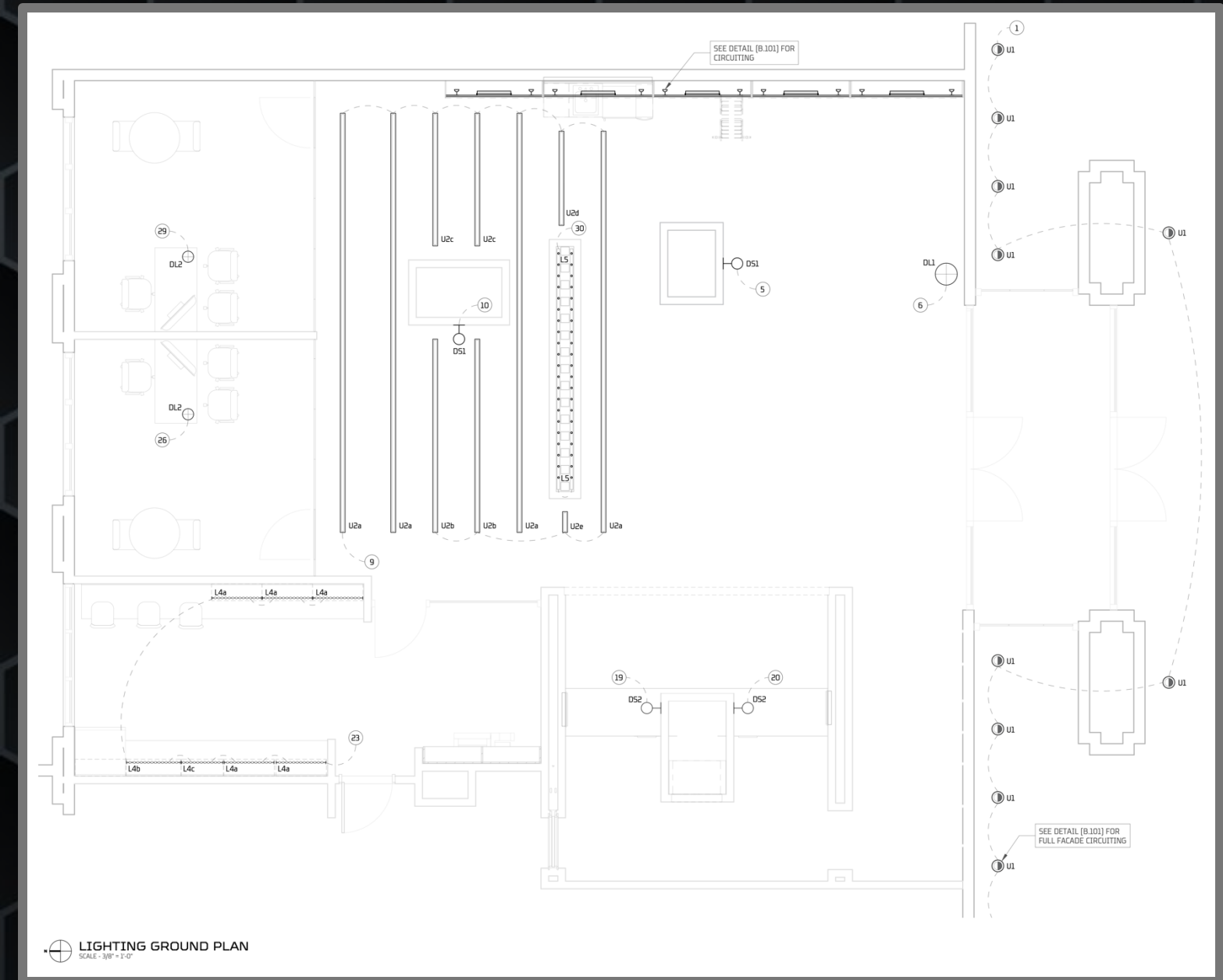
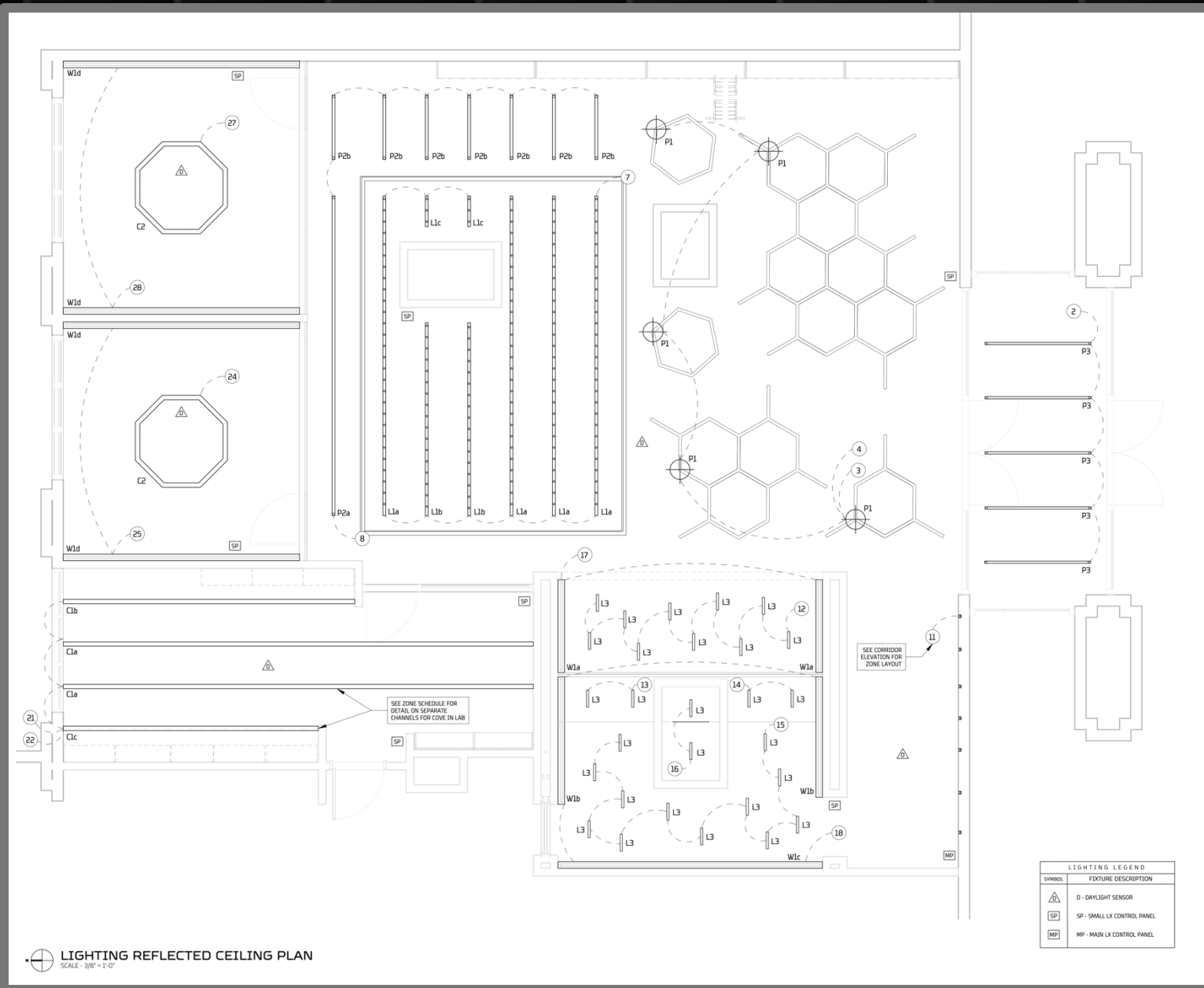


## Dimming/Switching Layout

Shown here is the switching layout RCP and Plan for the intended lighting dimming/control in the space.

Individual room-based control panels are notated on the plot and are located at each room's entrance. The main control panel will be located at the end of the corridor, near the side entrance double doors.

Recommended daylight sensor locations are notated on the plot and should be checked and confirmed by the electrical engineer. Infrared occupancy sensors are to be used and located in accordance with Title 24 guidelines.

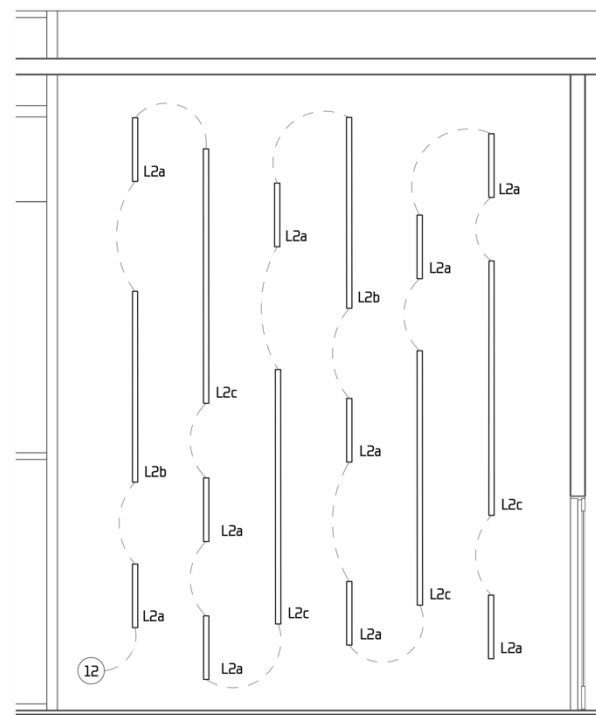


## Zone/Load Schedule

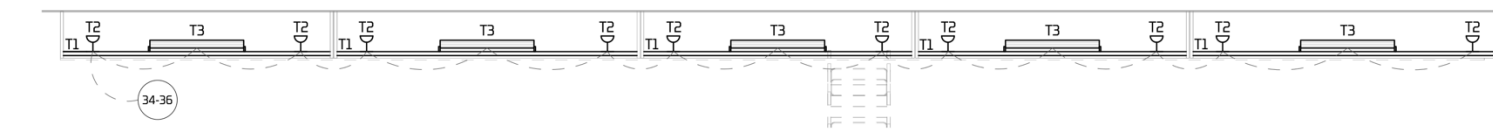
Shown here is the zone/load schedule, detailing fixture types, intended control protocols, and total loads per zone.

Additional detailed switching layouts are also shown.

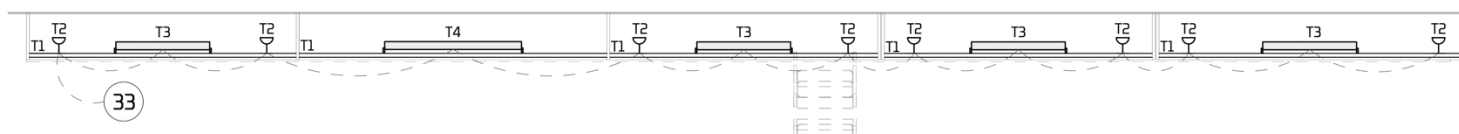
Specialty areas included here are the corridor wall, the historical display, and the exterior façade.



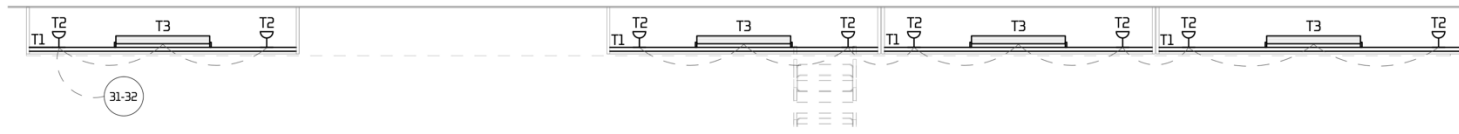
**CORRIDOR WALL ELEVATION**  
SCALE - 3/8" = 1'-0"



**TYP MUSEUM SHELF 4-6**  
SCALE - 1/2" = 1'-0"

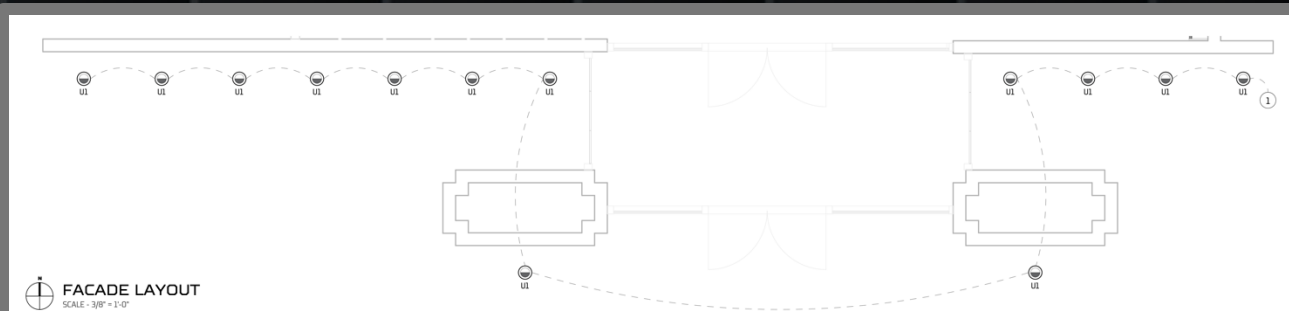


**MUSEUM SHELF 3**  
SCALE - 1/2" = 1'-0"



**TYP MUSEUM SHELF 1-2**  
SCALE - 1/2" = 1'-0"

ZONE	FIXTURE TYPE	LAMP TYPE	CONTROL PROTOCOL	LOCATION	DESCRIPTION	WATTS/UNIT	QUANTITY	TOTAL LOAD	
1	U1	LED RGBW (2700K)	DMX	Exterior Façade	Medium In-grade Uplights	23	EA	13	299
2	P3	LED 3000K	Lutron Hi-Lume .1%	Entryway	Linear Pendants	24.8	EA	5	124
3	P1	LED 3000K	Lutron Hi-Lume .1%	Reception Area	Geometric Linear Pendants	2.25	EA	79	178
4	P1	LED BLUE	Lutron Hi-Lume .1%	Reception Area	Geometric Linear Pendants	2.25	EA	79	178
5	DS1a-c	LED 3000K	0-10V TRIAC	Reception Area	Hexagon Sconce 5m,Md,Lg	122	TO	1	122
6	DL1	LED 3000K	0-10V TRIAC	Reception Area	Decorative Floor Lamp	1.15	EA	4	4.6
7	L1a-c	LED 3000K	Lutron Hi-Lume .1%	Investor Area	Linear Downlight - Mud-In	2	EA	99	198
8	L2a-b	LED 3000K	Lutron Hi-Lume .1%	Investor Area	Linear Downlight -	2	EA	45.6	91.2
9	U2a-d	LED BLUE	Lutron Hi-Lume .1%	Investor Area	Linear Uplight	1	EA	142	142
10	DS1a-c	LED 3000K	0-10V TRIAC	Investor Area	Hexagon Sconce 5m,Md,Lg	151	TO	1	151
11	L2a-c	LED 3000K	Lutron Hi-Lume .1%	Corridor	Linear Wall Dash - Mud-In	1	TO	62	62
12	L3	LED 2700K	Lutron Hi-Lume .1%	Open Workspace	Overhand Dashes	2	EA	10	20
13	L3	LED 2700K	Lutron Hi-Lume .1%	Open Workspace	North Desk Dashes	2	EA	2	4
14	L3	LED 2700K	Lutron Hi-Lume .1%	Open Workspace	South Desk Dashes	2	EA	2	4
15	L3	LED 2700K	Lutron Hi-Lume .1%	Open Workspace	Entrance Dashes	2	EA	12	24
16	L3	LED 2700K	Lutron Hi-Lume .1%	Open Workspace	Closet Overhead Dashes	2	EA	2	4
17	W1a	LED 2700K	Lutron Hi-Lume .1%	Open Workspace	Overhand Cove Wall Wash	2.25	EA	9	20.3
18	W1b-c	LED 2700K	Lutron Hi-Lume .1%	Open Workspace	Desks Cove Wall Wash	2.25	EA	40	90
19	DS2	LED 3000K	0-10V TRIAC	Open Workspace	North Desk Task	8	EA	1	8
20	DS2	LED 3000K	0-10V TRIAC	Open Workspace	South Desk task	8	EA	1	8
21	C1a-b	LED 4500K	Lutron Hi-Lume .1%	Lab/Research Area	Overhead White	3	EA	86	258
22	C1a-b	LED BLUE	Lutron Hi-Lume .1%	Lab/Research Area	Overhead Blue [Specialty]	3	EA	86	258
23	L4a-c	LED 4500K	Lutron Hi-Lume .1%	Lab/Research Area	Undercabinet Linear	4	EA	20.83	83.3
24	C2	LED 2700K	Lutron Hi-Lume .1%	Breakout Room 1	Overhead Octagon Cove	4	EA	16	64
25	W1d	LED 2700K	Lutron Hi-Lume .1%	Breakout Room 1	Cove Wall Washers	2.5	EA	27	67.5
26	DL2	LED 2700K	0-10V TRIAC	Breakout Room 1	Desk Lamp	4	EA	1	4
27	C2	LED 2700K	Lutron Hi-Lume .1%	Breakout Room 2	Overhead Octagon Cove	4	EA	16	64
28	W1d	LED 2700K	Lutron Hi-Lume .1%	Breakout Room 2	Cove Wall Washers	2.5	EA	27	67.5
29	DL2	LED 2700K	0-10V TRIAC	Breakout Room 2	Desk Lamp	4	EA	1	4
30	L5	LED 2700K	Lutron Hi-Lume .1%	Investor Area	Fountain Uplights	9.15	EA	2	18.3
31	T2-3	LED 2700K	Lutron Hi-Lume .1%	Museum Shelf 1	Track Adjustables Ø	52	TO	1	52
32	T2-3	LED 2700K	Lutron Hi-Lume .1%	Museum Shelf 2	Track Adjustables Ø	52	TO	1	52
33	T2-4	LED 2700K	Lutron Hi-Lume .1%	Museum Shelf 3	Track Adjustables Ø	61	TO	1	61
34	T2-3	LED 2700K	Lutron Hi-Lume .1%	Museum Shelf 4	Track Adjustables Ø	61	TO	1	61
35	T2-3	LED 2700K	Lutron Hi-Lume .1%	Museum Shelf 5	Track Adjustables Ø	61	TO	1	61
36	T2-3	LED 2700K	Lutron Hi-Lume .1%	Museum Shelf 6	Track Adjustables Ø	61	TO	1	61



**FACADE LAYOUT**  
SCALE - 3/8" = 1'-0"

## Control Narrative

Plans for lighting control of this Med-Tech office are described here. All suggestions and design intentions are part of an ongoing communication between the Designer and the Client.

Controls will be panel based, with the main controls located at the end of the corridor, next to the double doors. This panel will be for employees only to activate the start and end of each day. A time clock will handle any additional programmed mood/daylight adjustments automatically.

The main panel will also have presets made available for maintenance and cleaning. This panel will be able to control individual zones, as well as pre-made scenes for each room. Each room will have its own mini panel, with custom scenes programmed that allow for manual changes throughout the day and for specific uses.

Individual rooms will have three systems of control; action buttons for employee needs, automatic daylight sensors which will change levels throughout the day to conserve energy, and motion/infrared sensors connected to the astronomical time clock in the main panel.

Lastly, the main panel will include premade special event scenes for hosting investor events. This will activate the specialty blue system in the Lab/Research area, as well as the RGBW uplights on the façade.

Custom level settings for each room will be completed onsite after instillation, by the Designer.

This time will be used to activate and balance each space to find a dynamic contrast that will bring each space to life.

The core function of each space will be individually considered, alongside any specific requests from the client.

All areas will have access to the following scenes, alongside some room specific scenes:

Daytime – Interior levels are balanced with the daylight in the space.

Early Evening Work – Interior levels are adjusted as daylight levels go down.

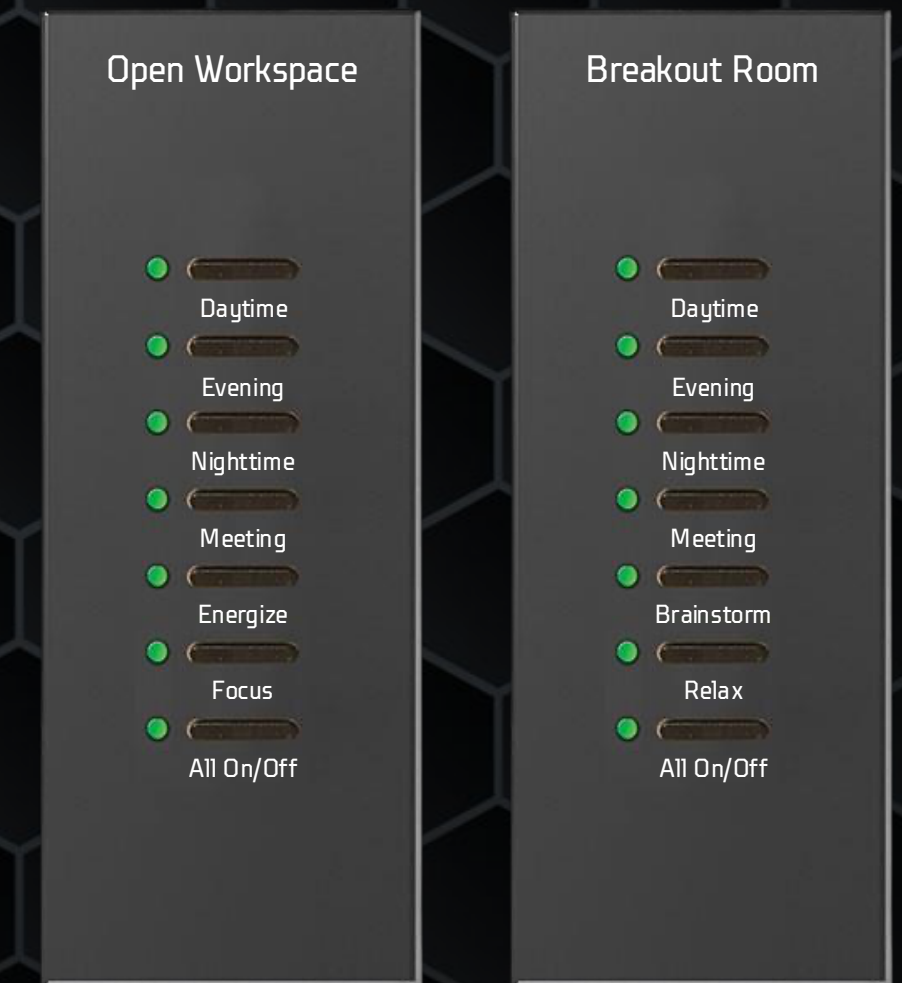
Night Work - For employees who work outside of business hours (6pm-8am).

Special Event - A more casual and inviting look utilizing the company's brand color.

Special attention paid to the Museum Wall & Investor/Reception Area.

Maintenance/Cleaning - For maintenance and cleaning crews at night.

All On/Off - Option for off hours & emergencies/safety.



*Example of Open  
Workspace Panel*

*Example of Breakout  
Room Panel*

## Entryway/Façade

Daytime – Large windows surround this space, so daylight sensors will be utilized throughout the day to keep levels balanced. Exterior uplighta are off.

Early Evening Work – Intensity increases as the sun sets behind the building; this space will need to be brighter before most other spaces. Exterior uplights will slowly get brighter as the sun sets.

Night Work – Levels are kept higher for nighttime entrances/exits. Brighter levels will also help with nighttime security. Exterior uplights are bright.

Special Event – Levels are dimmed to allow the color of the interior spaces to bleed through the exterior windows. Exterior lights can be set to custom colors, or warm white.

## Reception Area

Daytime – The downlight function of the pendants (3000K) in this space will be balanced with the daylight in the front windows. Colored uplights will remain off.

Early Evening Work – Intensity increases as the sun sets behind the building. Uplights will be brought in to balance the brightness of the ceiling.

Night Work – Levels will be moderate throughout this space, as guests will be minimal at this time of night.

Special Event – Downlight levels are dimmed to allow the blue uplights to glow bright, providing a playful blue bounce off the ceiling.

## Investor Area

Daytime – Linear lines in the drop ceiling (3000K) will provide most of the illumination in this space. Blue uplights will only be at a glow.

Early Evening Work – This area is the furthest from any windows, so levels will have to compensate for the lack of sunlight during the evening. Uplight levels increase slightly.

Night Work – Levels will be moderate throughout this space, as guests will be minimal at this time of night.

Special Event – Linear downlight levels are dimmed and uplight levels on the floor are increased, casting a blue glow on the drop ceiling. Fountain levels are increased to bring a sparkle of natural energy.

## Open Workspace

Daytime – Wall washers and the overhead linear downlights (both at 2700K) will be balanced with the daylight.

Early Evening Work – This area receives no direct sunlight and levels will compensate for that.

Night Work – Levels will be bright enough to stimulate evening work, but will be tailored to manage the impact on employee circadian rhythms.

Meeting – Wall washer levels increase to bring more light to the sides of the face for both in-person & online meetings.

Energize – Wall washer & linear downlight levels increase, bringing brightness and energy into the open workspace desks.

Focus– Task lighting levels increase and the linear downlights over the desk spaces increase.

Special Event – Linear downlight levels are dimmed and wall washer levels are increased to showcase the wooden paneling on the walls of the open workspace.

## Lab/Research Area

Daytime – Overhead coves and undercabinet strips (4000K) will be balanced with the daylight.

Early Evening Work – This area receive the most sunlight in the evening and levels will compensate for that.

Night Work – Levels will continue to be bright to maintain the high level of accuracy for the scanning technology.

Cabinet Focus - Undercabinet levels are at their brightest to help support any research needs on the countertops. This will reduce any shadows from overhead.

Out of Office - Option for the research team to turn on the specialty blue system in the lab, signaling that they are not present in the space.

Special Event – Linear coves are set to the specialty blue system. The undercabinet strips will be set to showcase what the team is currently working on.

## Breakout Spaces

Daytime – Wall washers and the overhead cove (both at 2700K) will be balanced with the daylight.

Early Evening Work – These areas receive the most sunlight in the evening, and levels will compensate for that.

Night Work – Levels will be bright enough to stimulate evening work but will be tailored to manage the impact on employee circadian rhythms.

Meeting – Wall washer levels increase, to bring more light to the sides of the face for both in-person & online meetings.

Brainstorm – Overhead cove levels increase to fill the space with warm light. Increased brightness has been shown to increase cognitive function.

Relax – Overhead cove levels are decreased, and wall washers increase to promote relaxation.

Special Event – Overhead cove levels are dimmed, and wall washer levels are increased to showcase a more fun/inviting look for investors to see through the glass paneling.