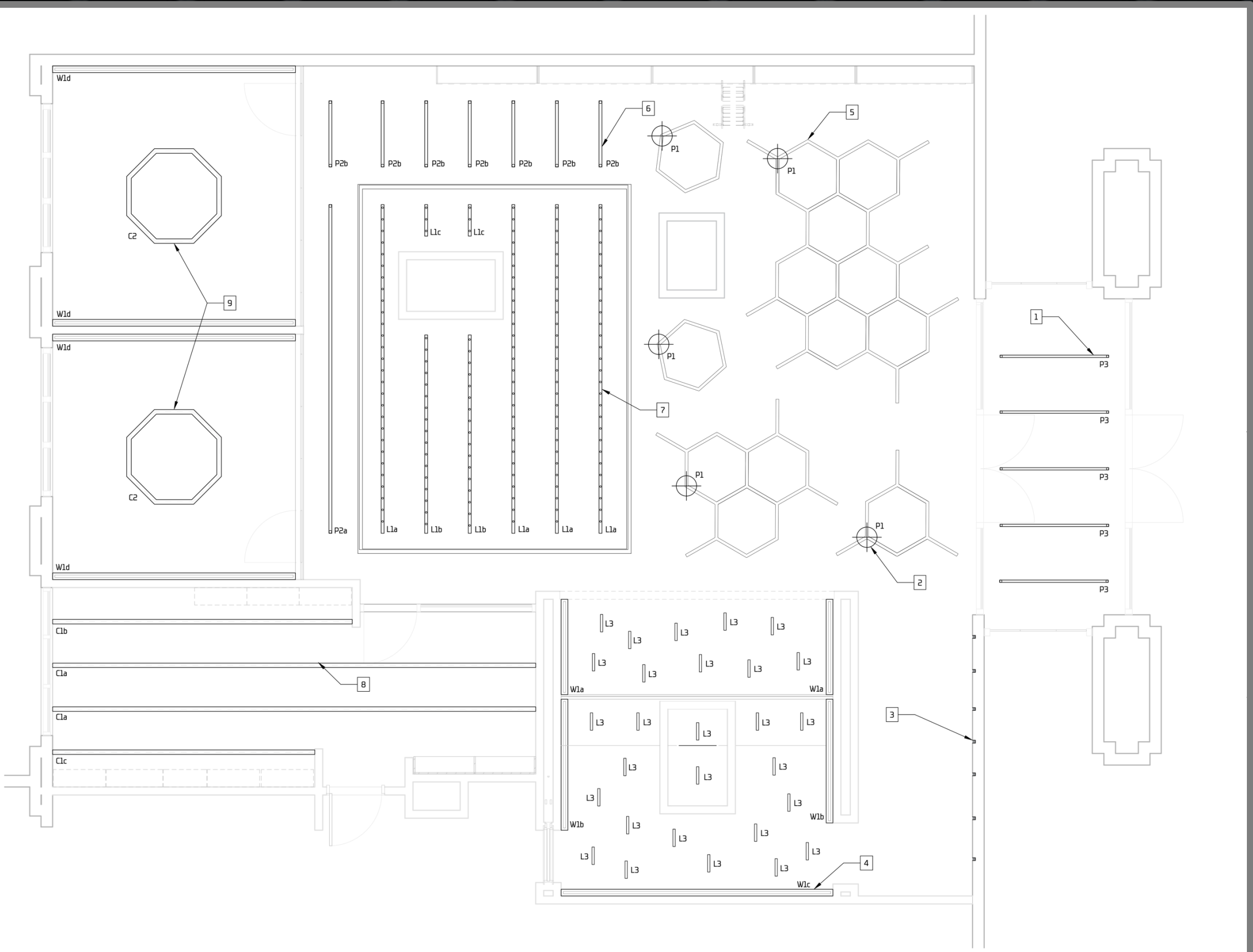


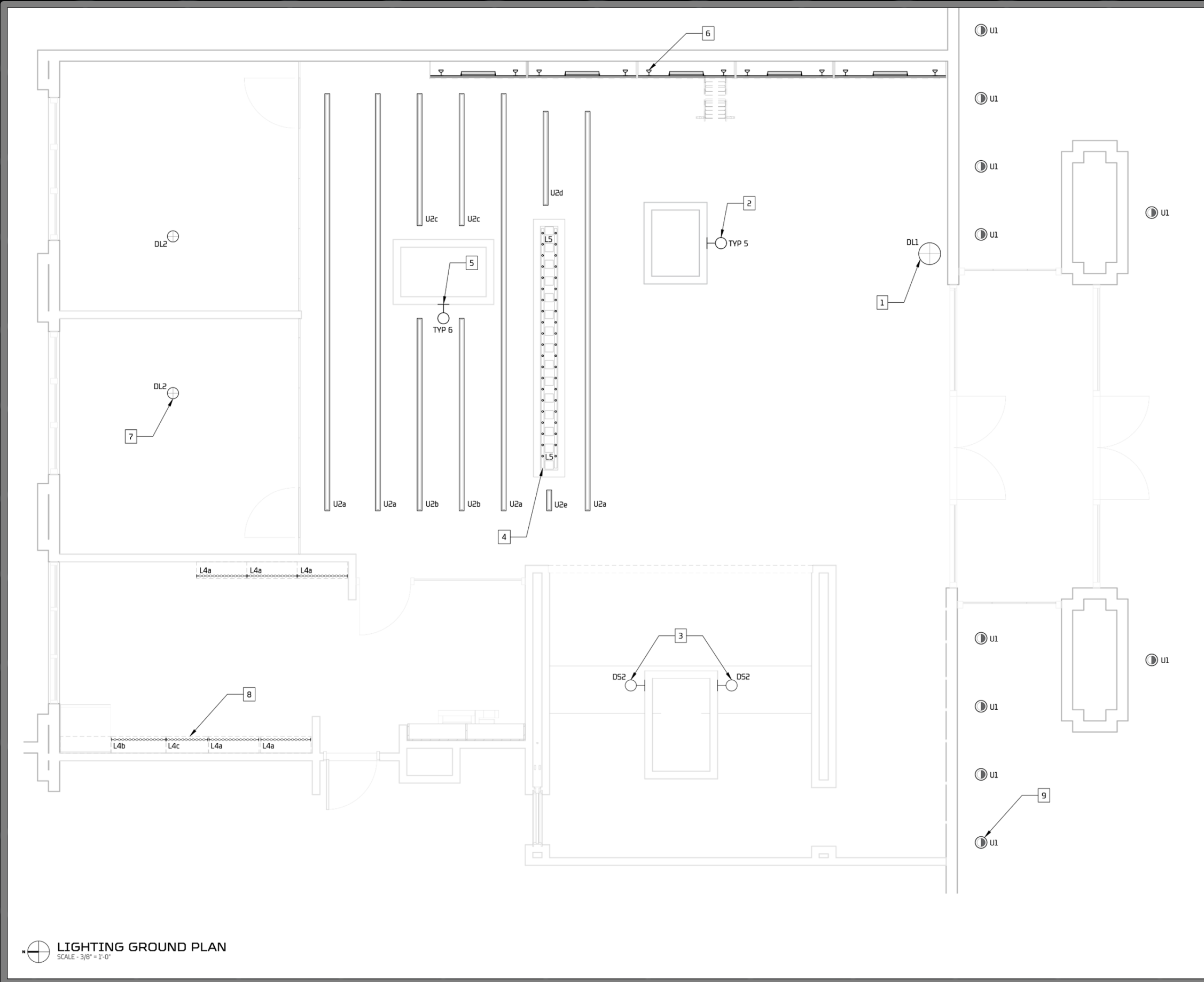
LIGHTING LEGEND	
SYMBOL	FIXTURE DESCRIPTION
	W1 - WALL WASHER
	L1-3 - LINEAR RECESSED
	L4 - LED TAPE RECESSED
	P1 - PENDANT DECORATIVE
	P2 - PENDANT LINEAR
	C1 - COVE LINEAR
	T2 - TRACK ADJUSTABLE ACCENT
	T3 - TRACK ADJUSTABLE LINEAR
	U1 - IN-GRADE UPLIGHT
	U2 - IN-GRADE LINEAR UPLIGHT
	DS1-2 - DECORATIVE SCONCE
	DL1 - DECORATIVE FLOOR LAMP
	DL2 - DECORATIVE TABLE LAMP

- GENERAL NOTES:**
1. FIXTURES NOT DRAWN TO SCALE. SYMBOLS INDICATE FIXTURE LOCATION.
 2. ALL FIXTURES TO BE INSTALLED IN ACCORDANCE WITH THE UL AND ALL FEDERAL, STATE, AND LOCAL CODES.
 3. CONFIRM ALL FINAL LUMINAIRE LOCATIONS WITH DESIGNER PRIOR TO ANY INSTALLATION WORK.
 4. CONTRACTOR TO CONFIGURE, SUPPLY AND LOCATE ALL LOW VOLTAGE TRANSFORMERS FOR ANY FIXTURES THAT REQUIRE IT.
 5. CONTRACTOR TO CONFIRM PLACEMENT OF DAYLIGHT SENSORS TO COMPLY WITH TITLE 24 AS SUGGESTED BY DESIGNER.
 6. SOME FIXTURES ON THIS DRAWING MIGHT BE DUPLICATED ON OTHER DRAWINGS - CONTRACTOR TO CHECK AND CONFIRM QUANTITIES.
 7. NOTATED PENDANT AND HANGING FIXTURE HEIGHTS TO BE MEASURED AFF.

- SPECIFIC NOTES:**
1. ALL P3 PENDANTS TO BE HUNG 8'-0" A.F.F., MEASURED TO BOTTOM OF THE FIXTURE.
 2. P1 PENDANT SYMBOL INDICATES LOCATION OF J-BOX.
 3. SEE SHEET B.101 FOR L2 LAYOUT ON THE CORRIDOR ELEVATION. FIXTURES ARE TO BE FLUSH WITH FINISHED WALL SURFACE.
 4. SEE W1 SPEC SHEET FOR FLUSH DRYWALL INSTALL DETAIL.
 5. P1 FIXTURES TO BE INSTALLED 15'-9" A.F.F., MEASURED TO BOTTOM OF THE FIXTURE.
 6. P2a-b PENDANTS TO BE HUNG 15'-9" A.F.F., MEASURED TO BOTTOM OF THE FIXTURE.
 7. L1a-c TO BE INSTALLED FLUSH WITH FINISHED CEILING SURFACE. SEE L1 SPEC SHEET FOR INSTALL DETAIL.
 8. C1a-b TO BE INSTALLED FLUSH WITH FINISHED CEILING SURFACE. SEE C1 SPEC SHEET FOR INSTALL DETAIL.
 9. C1c TO BE INSTALLED FLUSH WITH FINISHED CEILING SURFACE. SEE C1 SPEC SHEET FOR INSTALL DETAIL. WILL REQUIRE (9) 135° CORNERS FITTED BEFORE INSTALL, SEE FIXTURE SCHEDULE.



LIGHTING REFLECTED CEILING PLAN
SCALE - 3/8" = 1'-0"

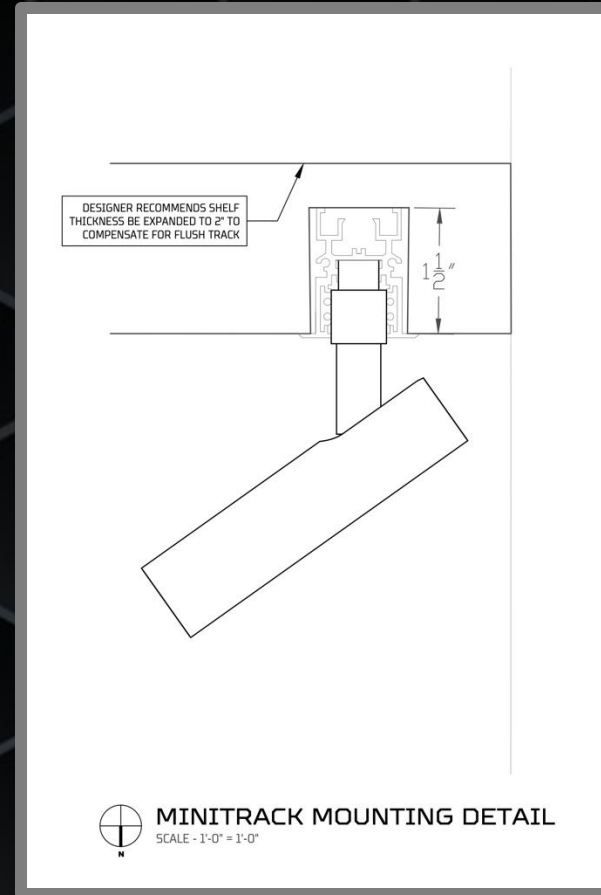
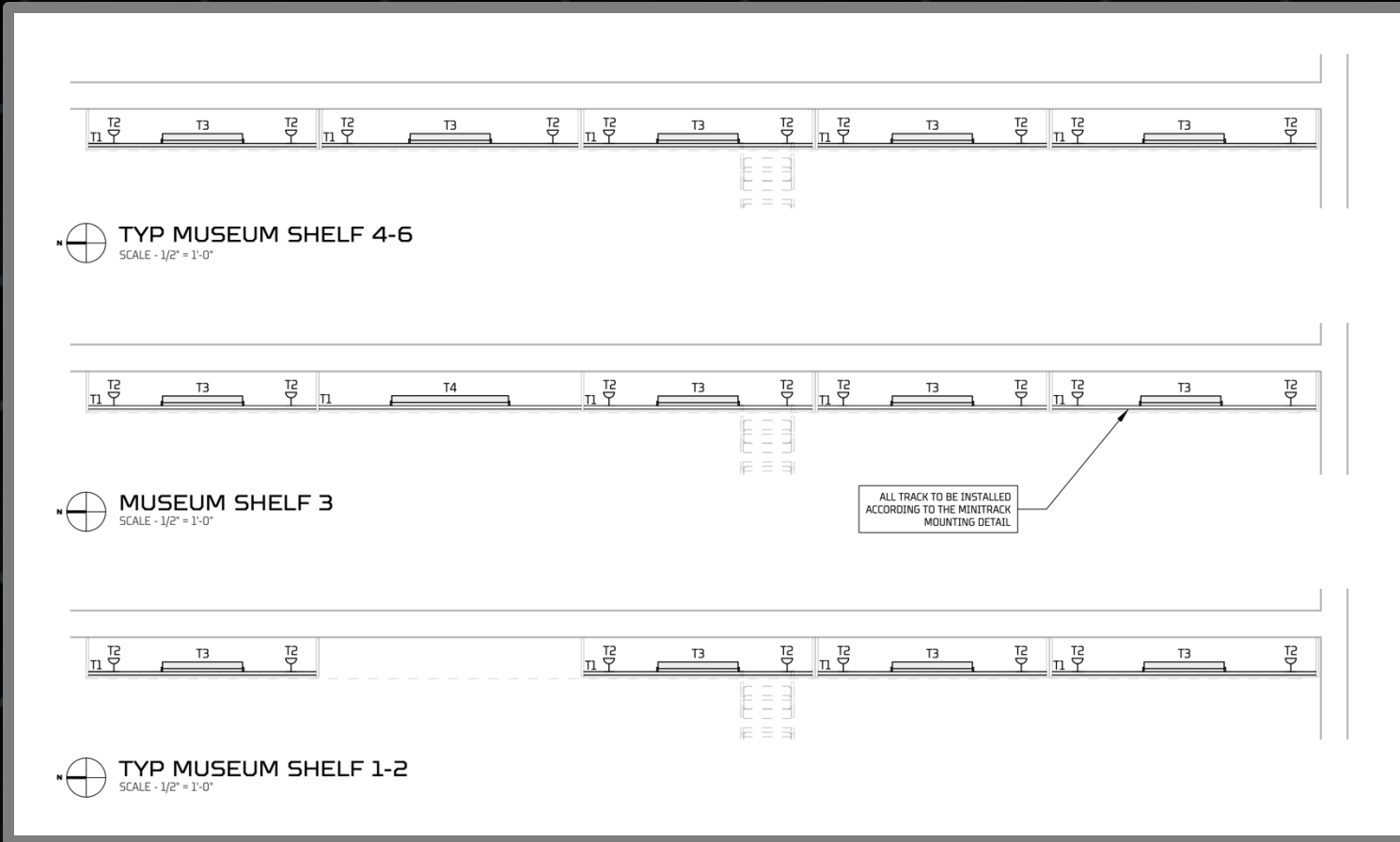


LIGHTING LEGEND	
SYMBOL	FIXTURE DESCRIPTION
	W1 - WALL WASHER
	L1-3 - LINEAR RECESSED
	L4 - LED TAPE RECESSED
	P1 - PENDANT DECORATIVE
	P2 - PENDANT LINEAR
	C1 - COVE LINEAR
	T2 - TRACK ADJUSTABLE ACCENT
	T3 - TRACK ADJUSTABLE LINEAR
	U1 - IN-GRADE UPLIGHT
	U2 - IN-GRADE LINEAR UPLIGHT
	DS1-2 - DECORATIVE SCONCE
	DL1 - DECORATIVE FLOOR LAMP
	DL2 - DECORATIVE TABLE LAMP

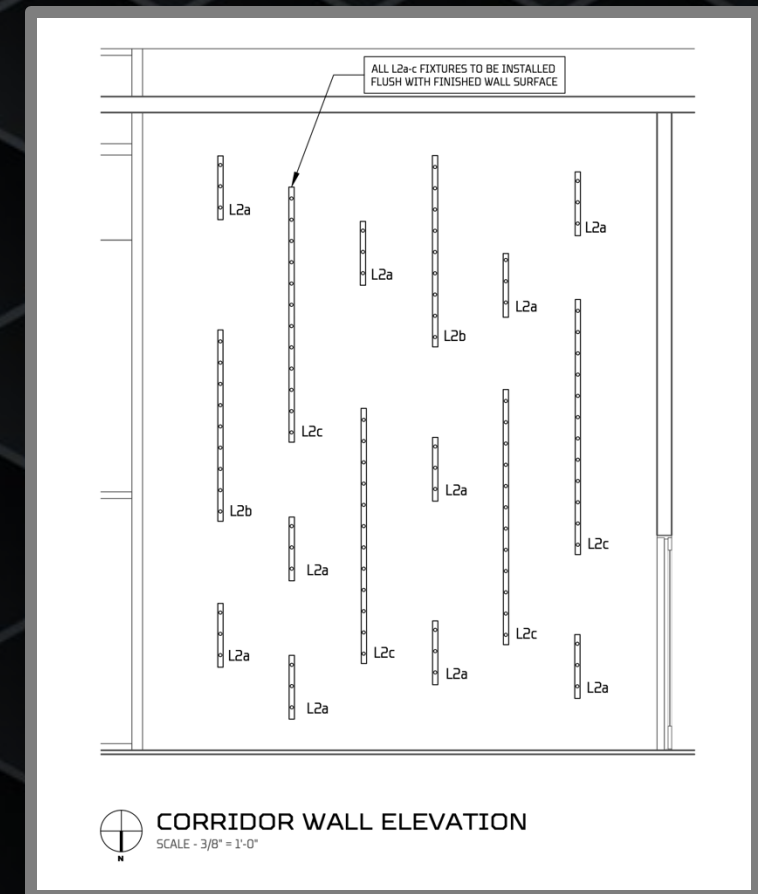
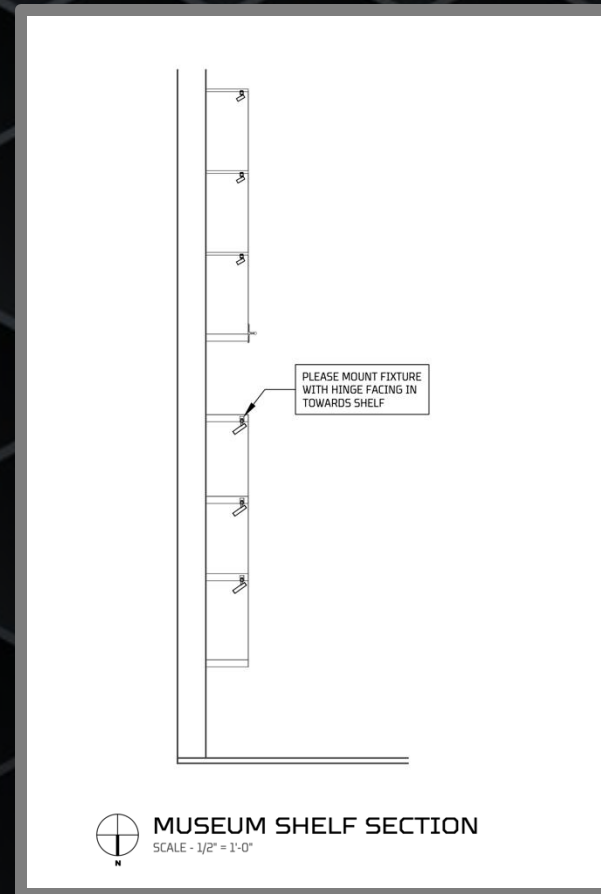
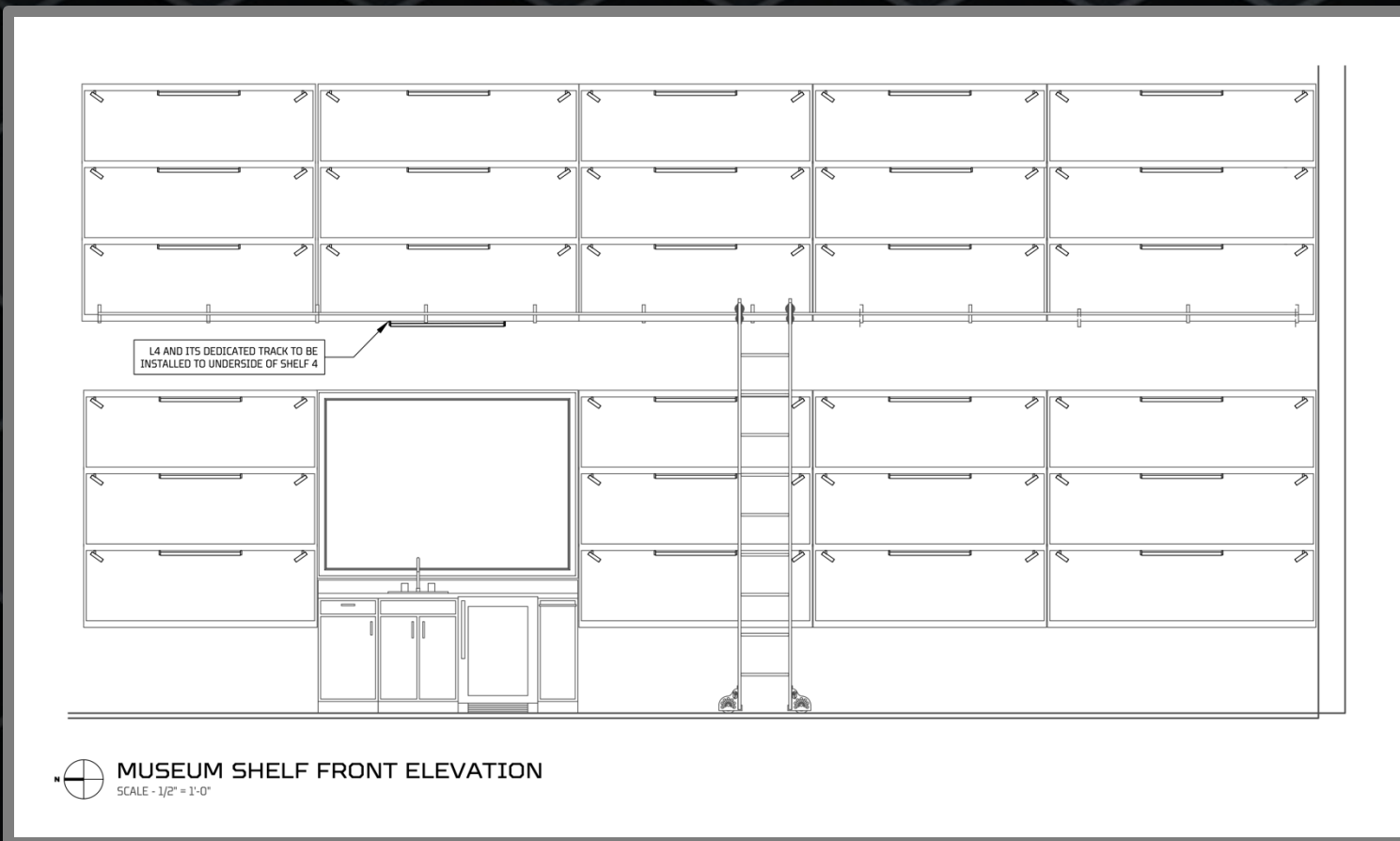
- GENERAL NOTES:**
1. FIXTURES NOT DRAWN TO SCALE. SYMBOLS INDICATE FIXTURE LOCATION.
 2. ALL FIXTURES TO BE INSTALLED IN ACCORDANCE WITH THE UL AND ALL FEDERAL, STATE, AND LOCAL CODES.
 3. CONFIRM ALL FINAL LUMINAIRE LOCATIONS WITH DESIGNER PRIOR TO ANY INSTALLATION WORK.
 4. CONTRACTOR TO CONFIGURE, SUPPLY AND LOCATE ALL LOW VOLTAGE TRANSFORMERS FOR ANY FIXTURES THAT REQUIRE IT.
 5. CONTRACTOR TO CONFIRM PLACEMENT OF DAYLIGHT SENSORS TO COMPLY WITH TITLE 24 AS SUGGESTED BY DESIGNER.
 6. SOME FIXTURES ON THIS DRAWING MIGHT BE DUPLICATED ON OTHER DRAWINGS - CONTRACTOR TO CHECK AND CONFIRM QUANTITIES.
 7. NOTATED PENDANT AND HANGING FIXTURE HEIGHTS TO BE MEASURED AFF.

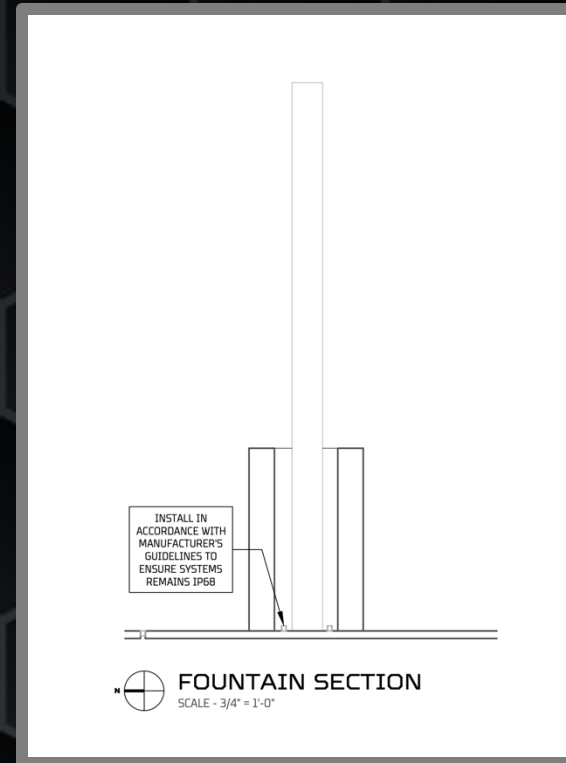
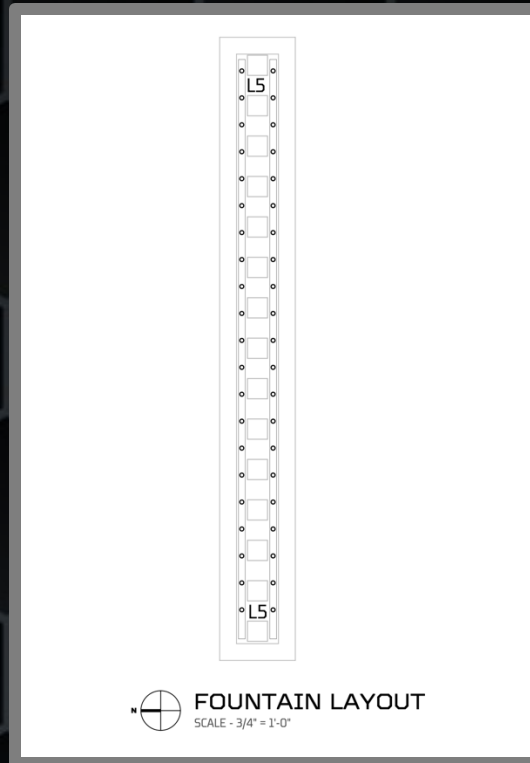
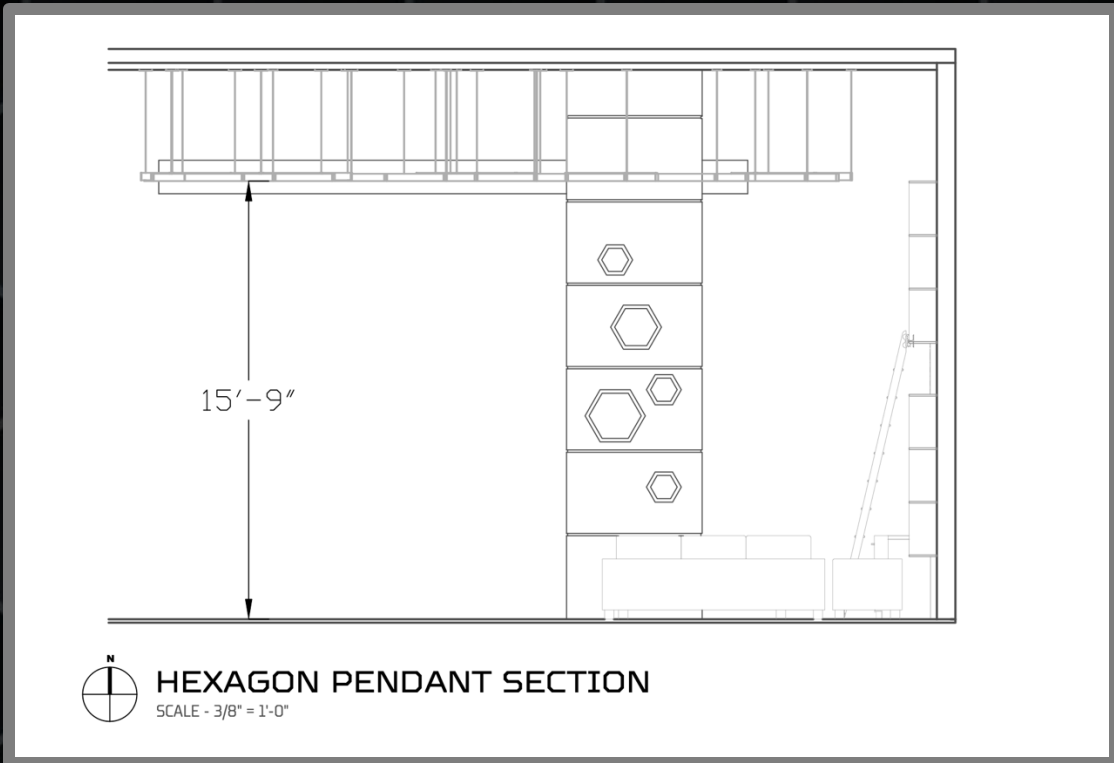
- SPECIFIC NOTES:**
1. SEE FIXTURE SCHEDULE FOR LAMP INFORMATION.
 2. SEE SHEET B.102 FOR SCONCE FIXTURE LAYOUT.
 3. J-BOX FOR TASK LIGHT TO BE INSTALLED 3'-10" A.F.F.
 4. SEE B.102 FOR FIXTURE LAYOUT.
 5. SEE SHEET B.102 FOR SCONCE FIXTURE LAYOUT.
 6. TYPICAL DISPLAY SHELF SHOWN HERE. SEE SHEET B.101 FOR FIXTURE LAYOUT & MOUNTING.
 7. SEE FIXTURE SCHEDULE FOR LAMP INFORMATION.
 8. LINEAR STRIPS TO BE FLUSH MOUNTED TO UNDERSIDE OF CABINETS.
 9. SEE SHEET B.102 FOR FULL FACADE LAYOUT.

LIGHTING GROUND PLAN
SCALE - 3/8" = 1'-0"

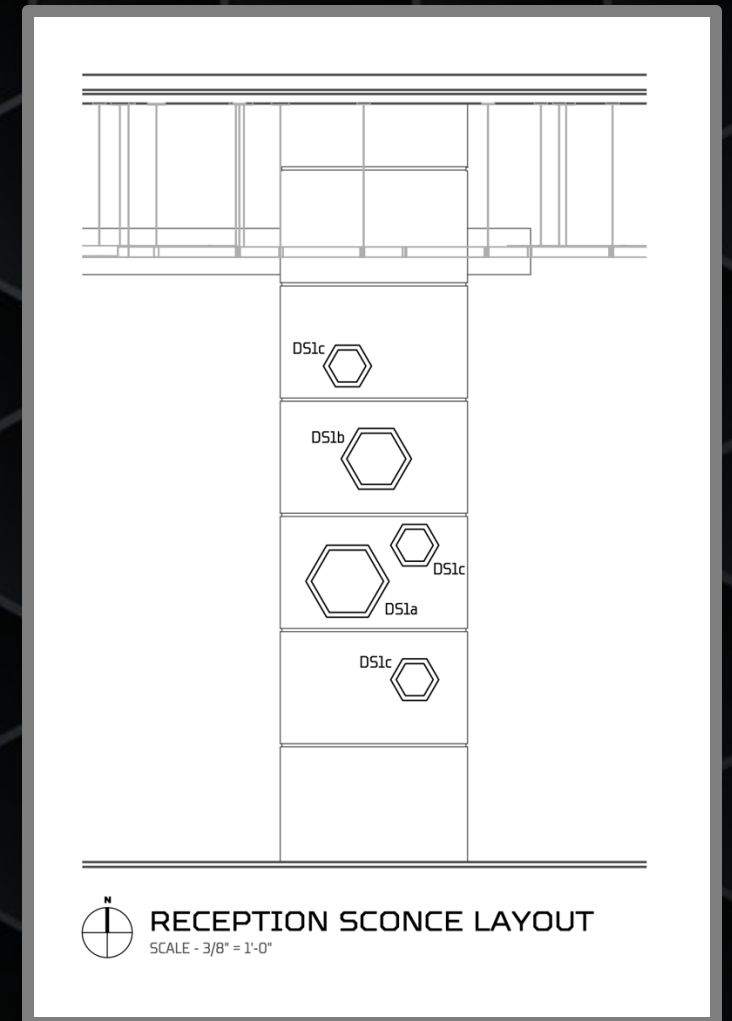
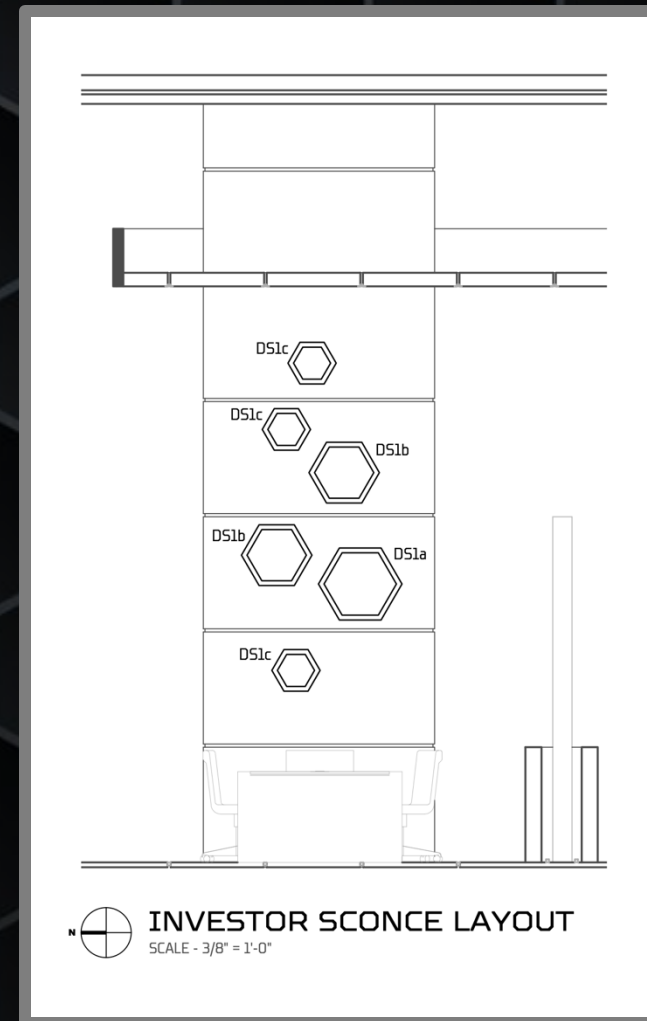
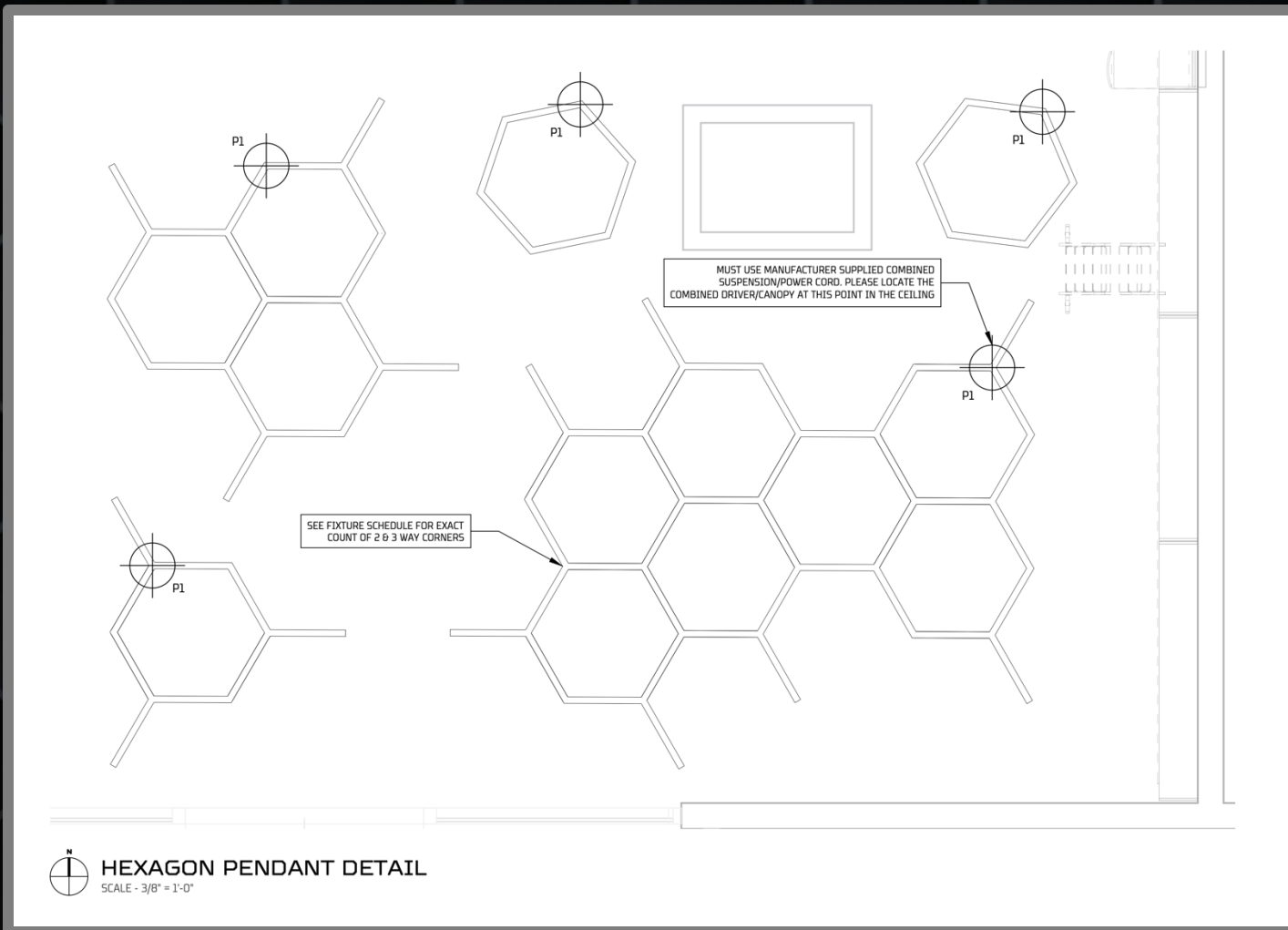


LIGHTING LEGEND	
SYMBOL	FIXTURE DESCRIPTION
	W1 - WALL WASHER
	L1-3 - LINEAR RECESSED
	T2 - TRACK ADJUSTABLE ACCENT
	T3 - TRACK ADJUSTABLE LINEAR
	U1 - IN-GRADE UPLIGHT





LIGHTING LEGEND	
SYMBOL	FIXTURE DESCRIPTION
	W1 - WALL WASHER
	L5 - LINEAR RECESSED
	P1 - PENDANT DECORATIVE
	U1 - IN-GRADE UPLIGHT
	DS1-2 - DECORATIVE SCONCE





FIXTURE TYPE	LIGHT SOURCE		MANUFACTURER SPECIFICATION	FIXTURE			QUAN
	WATT	TYPE		CONTROL	VOLT	DESCRIPTION & LOCATION	
INTERIOR FIXTURES							
Recessed Wall Wash							
W1a	2.5 w/ft	LED 2700K Cove Module - CRI 90	Focal Point - Focus Wall Wash - FWSL-FL-250LF-927K-1C-UNV-L11-U-WH-5'6"	Hi-Lume .1%	120V	Open Workspace - Cove Wall Washer - Length - 5'-6"	2
W1b	2.5 w/ft	LED 2700K Cove Module - CRI 90	Focal Point - Focus Wall Wash - FWSL-FL-250LF-927K-1C-UNV-L11-U-WH-7'6"	Hi-Lume .1%	120V	Open Workspace - Cove Wall Washer - Length - 7'-6"	2
W1c	2.5 w/ft	LED 2700K Cove Module - CRI 90	Focal Point - Focus Wall Wash - FWSL-FL-250LF-927K-1C-UNV-L11-U-WH-15'7"	Hi-Lume .1%	120V	Open Workspace - Cove Wall Washer - Length - 15'-7"	1
W1d	2.5 w/ft	LED 2700K Cove Module - CRI 90	Focal Point - Focus Wall Wash - FWSL-FL-250LF-927K-1C-UNV-L11-U-WH-13'11"	Hi-Lume .1%	120V	Breakout Rooms - Cove Wall Washer - Length - 13'-11"	4
Recessed Linear							
L1a	2 w/ft	LED 3000K - 30° Optics - CRI 93	ALUZ - ZUVU Flush Direct - A2-ZUVU-FLD-30D-2W-L300-30K-DRY-WH-18'10" Title 24 & JAB	Hi-Lume .1%	24V	Investor Drop Ceiling Mud-In Length - 18'10"	3
L1b	2 w/ft	LED 3000K - 30° Optics - CRI 93	ALUZ - ZUVU Flush Direct - A2-ZUVU-FLD-30D-2W-L300-30K-DRY-WH-11'4" Title 24 & JAB	Hi-Lume .1%	24V	Investor Drop Ceiling Mud-In Length - 11'-4"	2
L1c	2 w/ft	LED 3000K - 30° Optics - CRI 93	ALUZ - ZUVU Flush Direct - A2-ZUVU-FLD-30D-2W-L300-30K-DRY-WH-1'9" Title 24 & JAB	Hi-Lume .1%	24V	Investor Drop Ceiling Mud-In Length - 1'-9"	2
L2a	1 w/ft	LED 3000K - Frosted Optics - CRI 93	ALUZ - ZUVU Flush Direct - A2-ZUVU-FLD-F-2W-L300-27K-DRY-WH-2" Title 24 & JAB	Hi-Lume .1%	24V	Corridor Wall Dashes Mud-In Length - 2"	9
L2b	1 w/ft	LED 3000K - Frosted Optics - CRI 93	ALUZ - ZUVU Flush Direct - A2-ZUVU-FLD-F-2W-L300-27K-DRY-WH-6" Title 24 & JAB	Hi-Lume .1%	24V	Corridor Wall Dashes Mud-In Length - 6"	3
L2c	1 w/ft	LED 3000K - Frosted Optics - CRI 93	ALUZ - ZUVU Flush Direct - A2-ZUVU-FLD-F-2W-L300-27K-DRY-WH-8" Title 24 & JAB	Hi-Lume .1%	24V	Corridor Wall Dashes Mud-In Length - 8"	2
L3	2 w/ft	LED 3000K - 15° Optics - CRI 93	ALUZ - ZUVU Flush Direct - A2-ZUVU-FLD-15D-2W-L300-27K-DRY-WH-1" Title 24 & JAB	Hi-Lume .1%	24V	Open Workspace Ceiling Dashes Mud-In Length - 1"	26
L4a	4 w/ft	LED 4500K - Frosted Optics - CRI 93	ALUZ - ZAKY Standard - A1-ZAKY-STN-F2W-L300-40K-DRY-WH-3'3" Title 24 & JAB	Hi-Lume .1%	24V	Research Undercabinet Surface Mount Length - 3'-3"	5
L4b	4 w/ft	LED 4500K - Frosted Optics - CRI 93	ALUZ - ZAKY Standard - A1-ZAKY-STN-F2W-L300-40K-DRY-WH-3" Title 24 & JAB	Hi-Lume .1%	24V	Research Undercabinet Surface Mount Length - 3"	1
L4c	4 w/ft	LED 4500K - Frosted Optics - CRI 93	ALUZ - ZAKY Standard - A1-ZAKY-STN-F2W-L300-40K-DRY-WH-2'-6" Title 24 & JAB	Hi-Lume .1%	24V	Research Undercabinet Surface Mount Length - 2'-6"	1
L5	2 w/ft	LED 2800K - Frosted Optics - CRI 96	LED LINEAR - Neptune White High Efficiency - NEPTUNE-WHITE-6-W930-1/10V-4572-IP68	Hi-Lume .1%	24V	Water Feature Surface Mount Length - 15ft	2
Pendant							
P1	3 w/ft	LED Blue/3000K - 35 Up/65 Dn - CRI 90	FLUXWERX - Lines Suspended - LNI-P-6-D-12-K-W-3-9-30-B-L1-1	Hi-Lume .1%	120V	Reception Height to bottom of fixture 15'-9" A.F.F. Length 2'	79
P2a	2 w/ft	LED 3000K - 30° Optics - CRI 93	ALUZ - ZITO Pendant Sq - A3-ZITO-PSQ-30D-2W-L300-30K-DRY-WH-18'10" Title 24 & JAB	Hi-Lume .1%	24V	Investor Area Height to bottom of fixture 15'-9" A.F.F. Length 18'-10"	1
P2b	2 w/ft	LED 3000K - 30° Optics - CRI 93	ALUZ - ZITO Pendant Sq - A3-ZITO-PSQ-30D-2W-L300-30K-DRY-WH-3'9" Title 24 & JAB	Hi-Lume .1%	24V	Investor Area Height to bottom of fixture 15'-9" A.F.F. Length 3'-9"	7
P3	4 w/ft	LED 3000K - 30° Optics - CRI 93	ALUZ - ZITO Pendant Sq - A3-ZITO-PSQ-15D-4W-L300-30K-DRY-WH-6'2" Title 24 & JAB	Hi-Lume .1%	24V	Entryway Height to bottom of fixture 8'-0" A.F.F. Length 6'-2"	5
Recessed Cove							
C1a	3 w/ft	LED Blue/4500K - 2 Channels - CRI 95	ALUZ - ZELO Cove Indirect - A2-ZELO-DUT-45K-4W-L300-DRY-UNV-27'8"	Hi-Lume .1%	120V	Research/Lab Mud-In Length - 27'-8"	2
C1b	3 w/ft	LED Blue/4500K - 2 Channels - CRI 95	ALUZ - ZELO Cove Indirect - A2-ZELO-DUT-45K-4W-L300-DRY-UNV-17'2"	Hi-Lume .1%	120V	Research/Lab Mud-In Length - 17'-2"	1
C1c	3 w/ft	LED Blue/4500K - 2 Channels - CRI 95	ALUZ - ZELO Cove Indirect - A2-ZELO-DUT-45K-4W-L300-DRY-UNV-14'11"	Hi-Lume .1%	120V	Research/Lab Mud-In Length - 14'-11"	1
C2	2 w/ft	LED 2700K - CRI 93	ALUZ - ZELO Cove Indirect - A2-ZELO-DUT-2700K-4W-L300-DRY-UNV-2'3"	Hi-Lume .1%	120V	Breakout Mud-In Con. Length 20' Needs [9] 135° Corners Per Instance	16
Recessed Track							
T1	N/A	Recessed R Mini-Track - 8ft Length	Zaniboni Lighting - Recessed R Mini-Track - K-M2R-08-B00	Hi-Lume .1%	48V	Museum Cut to custom lengths - 6 @ 6'-7" 3 @ 6'-4.75" 18 @ 5'-8.5"	27
T2	2W	LED 2700K - 60° Lens - CRI 95	Zaniboni Lighting - Adjustable Accent - KO-GEM4R-02-27-B-6-C-BK-V48-0D-D	Hi-Lume .1%	48V	Museum Shelving Deep Regress Track Mount	54
T3	9W	LED 2700K - Opal Lens - CRI 95	Zaniboni Lighting - Adjustable Linear - L1-RIGAJO-09-27-B-OP-250-48-24-BK	Hi-Lume .1%	48V	Museum Shelving	27
Ingrade Uplights							
U1	12W	LED RGBW - Medium Beam - CRI 80	WE-EF - Inground Color Changer - ETC340-GB-CC - M-185-7805-DMX	DMX	240V	Exterior Façade Installed flush with concrete walkway	13
U2a	1 w/ft	LED RGBW - 3000K - 100% Frosted Lens	ALUZ - ZERA Ingrade RGBW - A4-ZERA-STN-RGBW-F-2W-L300-IP67-WH-24'9"	Hi-Lume .1%	24V	Investor Area Installed flush with finished floor Length - 24'-9"	4
U2b	1 w/ft	LED RGBW - 3000K - 100% Frosted Lens	ALUZ - ZERA Ingrade RGBW - A4-ZERA-STN-RGBW-F-2W-L300-IP67-WH-11'5"	Hi-Lume .1%	24V	Investor Area Installed flush with finished floor Length - 11'-5"	2
U2c	1 w/ft	LED RGBW - 3000K - 100% Frosted Lens	ALUZ - ZERA Ingrade RGBW - A4-ZERA-STN-RGBW-F-2W-L300-IP67-WH-7'9"	Hi-Lume .1%	24V	Investor Area Installed flush with finished floor Length - 7'-9"	5
U2d	1 w/ft	LED RGBW - 3000K - 100% Frosted Lens	ALUZ - ZERA Ingrade RGBW - A4-ZERA-STN-RGBW-F-2W-L300-IP67-WH-5'6"	Hi-Lume .1%	24V	Investor Area Installed flush with finished floor Length - 5'-6"	2
U2e	1 w/ft	LED RGBW - 3000K - 100% Frosted Lens	ALUZ - ZERA Ingrade RGBW - A4-ZERA-STN-RGBW-F-2W-L300-IP67-WH-1'2"	Hi-Lume .1%	24V	Investor Area Installed flush with finished floor Length - 1'-2"	2
DECORATIVE FIXTURES							
Decorative Sconces							
DS1a	36W	LED 3000K - CRI 90	Hollis+Morris - HEXAGON Sconce - HEXAsconce-LG-BK	0-10V TRIAC	24V	Lobby & Investor Areas See drafting for pattern detail	2
DS1b	29W	LED 3000K - CRI 90	Hollis+Morris - HEXAGON Sconce - HEXAsconce-MD-BK	0-10V TRIAC	24V	Lobby & Investor Areas See drafting for pattern detail	3
DS1c	19W	LED 3000K - CRI 90	Hollis+Morris - HEXAGON Sconce - HEXAsconce-SM-BK	0-10V TRIAC	24V	Lobby & Investor Areas See drafting for pattern detail	6
DS2	8W	LED 3000K - Dimmable - CRI 90	Modern Forms - BL-20922-3000K-BK-8W-530-373	0-10V TRIAC	120V	Open Workspace - Adjustable Task Light	2
Decorative Lamp							
DL1	1.15W	LED 2700K - 120° Optics	ECOLOGICITY - Super Nova 4 - Warm White	0-10V TRIAC	12V	Retrofit Floor Lamp - See drafting for layout - Contractor to provide driver	12
DL2	24 w/chip	LED 2700K - 120° Optics	ECOLOGICITY - Dwarf Star 1 Chip - Warm White - 20lm -	0-10V TRIAC	12V	Retrofit Table Lamp - See drafting for layout - Contractor to provide driver	24

