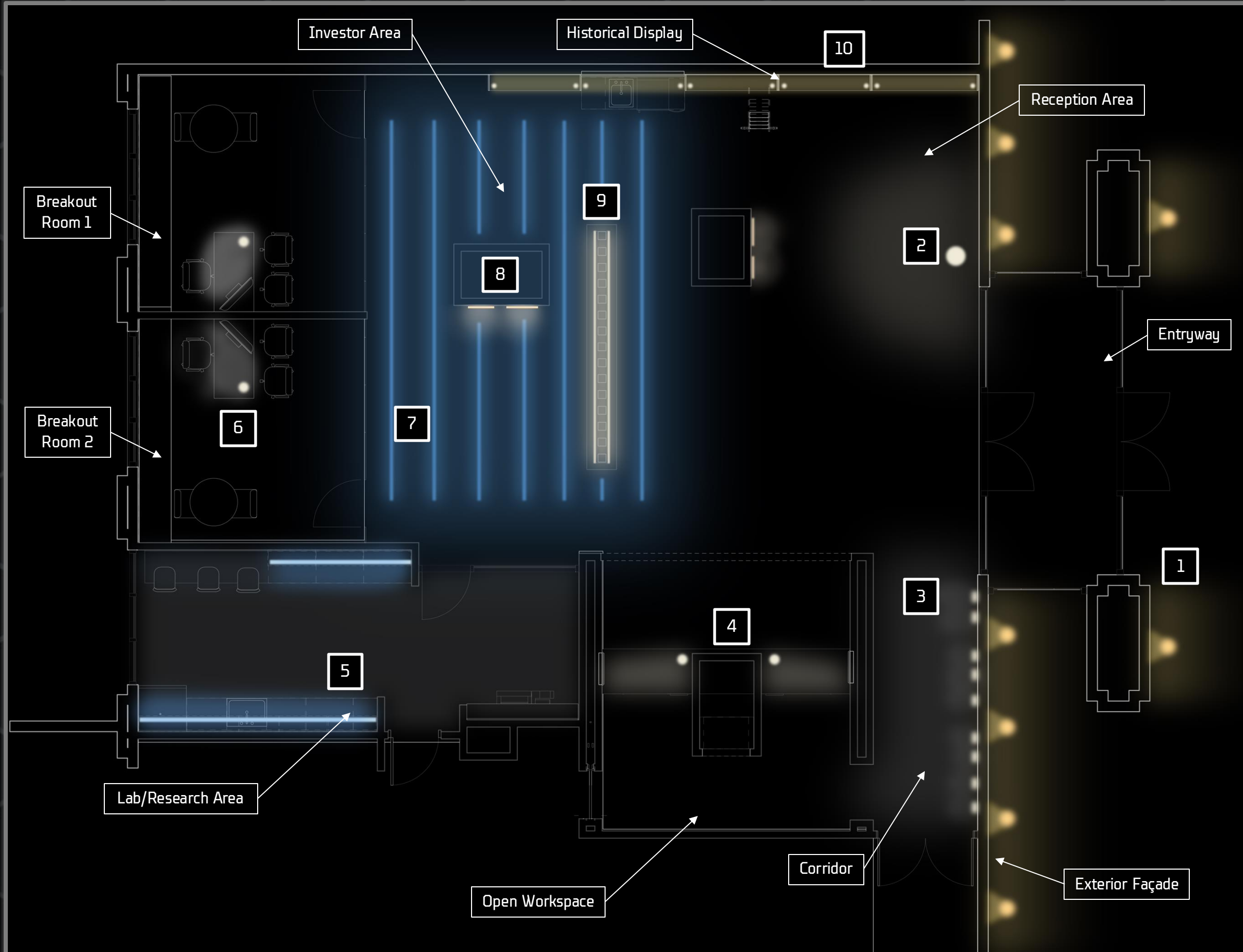


- 1 Linear pendant downlights lead guests from the foyer into the main focal point of the space.
- 2 Molecular pendants evoke a sleek and futuristic spatial depth, while maintaining functional and balanced up/down lighting.
- 3 Recessed linear strips in the drop ceiling create a futuristic aesthetic, framing the space with sleek precision while providing clean, diffuse illumination.
- 4 Linear pendants echo the lines of the recessed fixtures in the drop ceiling, expanding the investor space beyond the confines of the ceiling.
- 5 Recessed linear dashes bring sparks of warm energy to the open workspace. They provide diffuse, yet sleek, overhead illumination.
- 6 Cove wall washers provide warm, even, and functional illumination, which will benefit collaboration in this space.
- 7 Integrated linear coves provide cool, bright, and indirect illumination with a focus on high CRI for the precision technology.
- 8 Recessed domed coves provide soft, warm, and relaxing glows in the breakout room, while maintaining a futuristic form.
- 9 Cove wall washers will bounce soft, low-glare light to provide even illumination to facilitate efficient brainstorming.



- 1** RGBW In-grade uplights narrowly scrape the exterior walls, beginning the linear narrative before stepping into the space.
- 2** To honor the company's integration of medical history, a vintage surgical floor lamp, retrofitted with modern LEDs, will be situated in the reception area.
- 3** Wall recessed linear streaks energize the hallway leading to the open workspace.
- 4** A task light that is both dimmable and retractable will support focused work at each workstation.
- 5** Under cabinet strips provide functional illumination and reduce shadows on the sensitive research areas.
- 6** Small adjustable vintage surgical lights, retrofitted with LEDs, support focused work at the breakout desks.
- 7** Recessed floor linear strips glow with the company's signature color, mirroring the pattern laid out in the ceiling above.
- 8** Decorative hexagon sconces bring a soft glow to the columns in the investor and reception areas.
- 9** Integrated fountain uplighting will enhance the natural energy from the movement of the water.
- 10** Warm integrated adjustable accent lights give dimensionality to the display shelves and contrast the softer lighting in the reception/investor area.