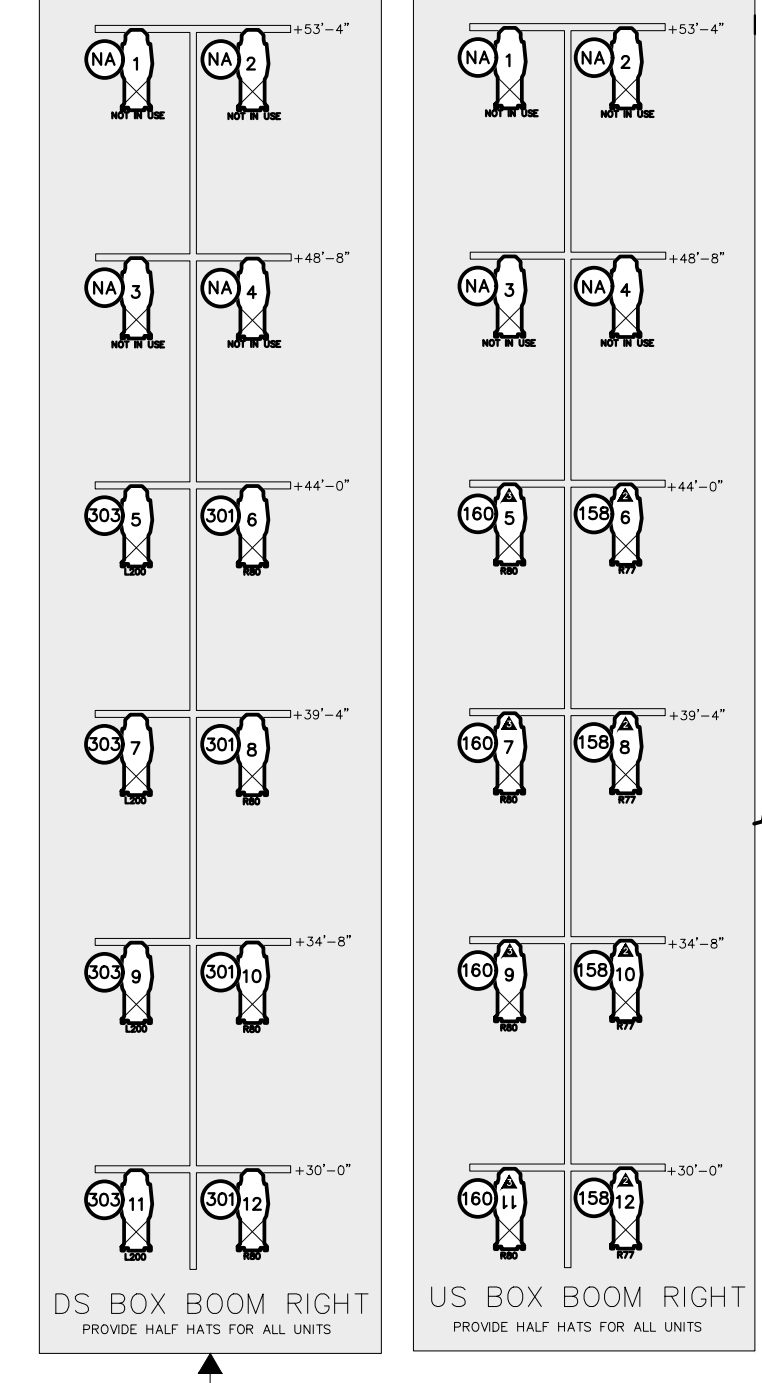
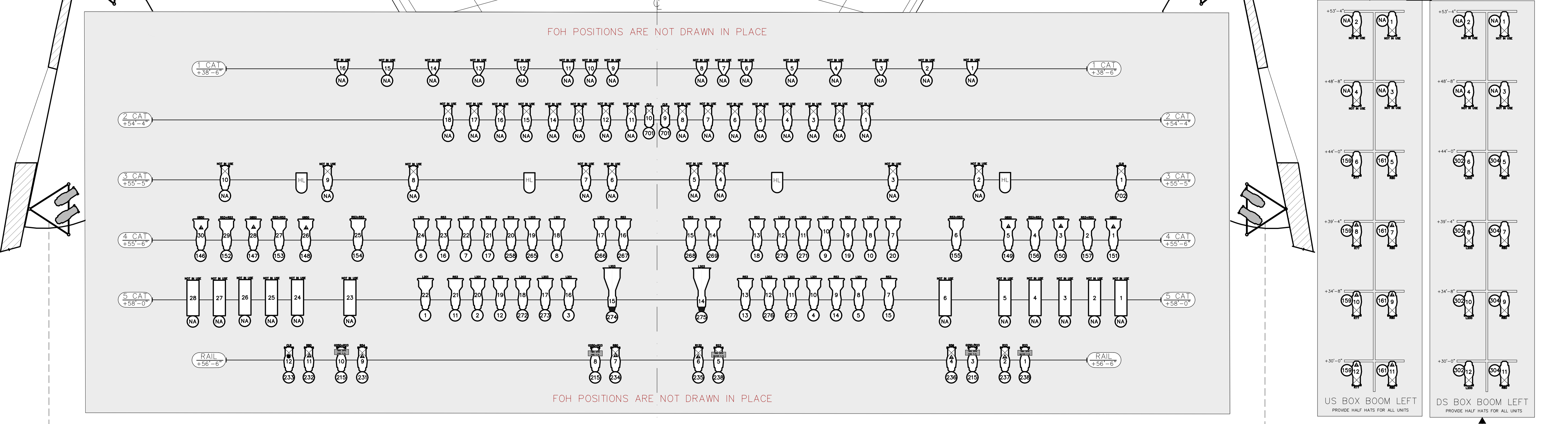
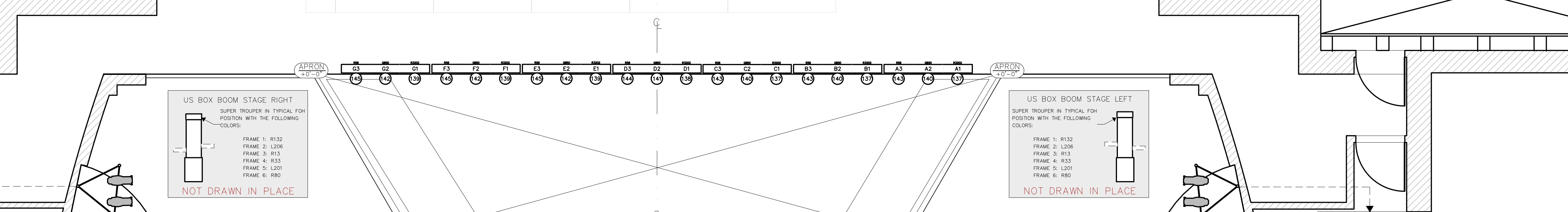
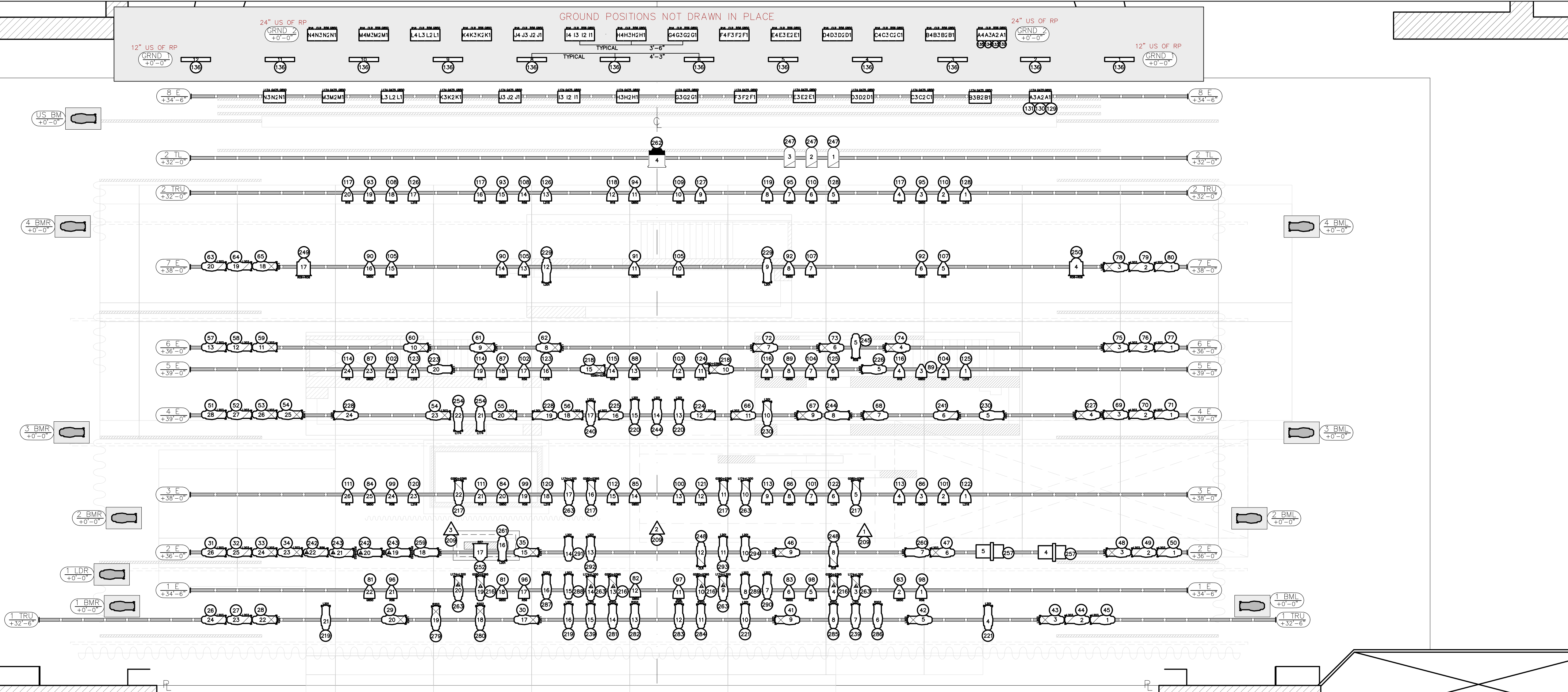


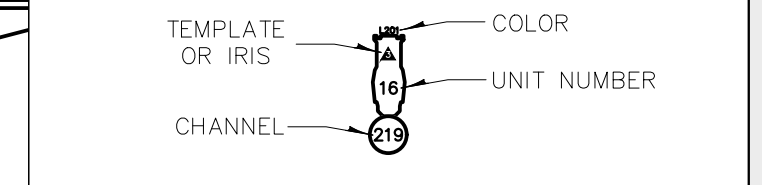
6'3" 14'-6" 8 ELECTRIC	39'-10"	70
6'3" RP	38'-10"	68
6'3" BLACK OUT	37'-4"	66
6'3" SCRAM	36'-4"	65
6'3" STAIR	35'-10"	64
6'3" LEGS	36'-4"	63
6'3" BORDER	35'-4"	62
6'3" 34'-4"	34'-4"	60
6'3" 22'-0" #2 LIGHTING TRUSS	33'-4"	59
6'3" 20'-0" BORDER	31'-4"	56
6'3" LEGS #1	30'-10"	55
6'3" 30'-4"	30'-4"	54
6'3" 29'-10" 7 ELECTRIC	29'-10"	53
6'3" 29'-4"	29'-4"	52
6'3" 27'-4"	27'-4"	49
6'3" MOON	26'-10"	48
6'3" LEGS #3	25'-10"	46
6'3" 25'-4"	25'-4"	45
6'3" 24'-10" BORDER #3	24'-10"	44
6'3" 24'-4"	24'-4"	43
6'3" 23'-10" 6 ELECTRIC	23'-10"	42
6'3" 23'-4"	23'-4"	41
6'3" 22'-10" 5 ELECTRIC	22'-10"	40
6'3" 22'-4"	22'-4"	39
6'3" 21'-10" 4 ELECTRIC	21'-10"	38
6'3" 21'-4"	21'-4"	37
6'3" 20'-10" 3 ELECTRIC	20'-10"	36
6'3" 20'-4"	20'-4"	35
6'3" 19'-10" 2 ELECTRIC	19'-10"	34
6'3" 19'-4"	19'-4"	33
6'3" 18'-10" 1 ELECTRIC	18'-10"	32
6'3" 18'-4"	18'-4"	31
6'3" 17'-10" 4 ELECTRIC	17'-10"	30
6'3" 17'-4"	17'-4"	29
6'3" 16'-10" 3 ELECTRIC	16'-10"	28
6'3" 16'-4"	16'-4"	27
6'3" 15'-10" 2 ELECTRIC	15'-10"	26
6'3" 15'-4"	15'-4"	25
6'3" 14'-10" 1 ELECTRIC	14'-10"	24
6'3" 14'-4"	14'-4"	23
6'3" 13'-10" 3 ELECTRIC	13'-10"	22
6'3" 13'-4"	13'-4"	21
6'3" 12'-10" 2 ELECTRIC	12'-10"	20
6'3" 12'-4"	12'-4"	19
6'3" 11'-10" 1 ELECTRIC	11'-10"	18
6'3" 11'-4"	11'-4"	17
6'3" 10'-10" 3 ELECTRIC	10'-10"	16
6'3" 10'-4"	10'-4"	15
6'3" 9'-10" 2 ELECTRIC	9'-10"	14
6'3" 9'-4"	9'-4"	13
6'3" 8'-10" 1 ELECTRIC	8'-10"	12
6'3" 8'-4"	8'-4"	11
6'3" 7'-10" 3 ELECTRIC	7'-10"	10
6'3" 7'-4"	7'-4"	9
6'3" 6'-10" 2 ELECTRIC	6'-10"	8
6'3" 6'-4"	6'-4"	7
6'3" 5'-10" 1 ELECTRIC	5'-10"	6
6'3" 5'-4"	5'-4"	5
6'3" 4'-10" 3 ELECTRIC	4'-10"	4
6'3" 4'-4"	4'-4"	3
6'3" 3'-10" 2 ELECTRIC	3'-10"	2
6'3" 3'-4"	3'-4"	1
6'3" PORTAL LEGS	3'-4"	4
6'3" 28'-0" PORTAL BORDER	2'-10"	3
6'3" HOUSE CURTAIN	2'-2"	2
6'3" HOUSE TEASER	1'-6"	1
6'3" GRID FIRE CURTAIN	0'-10"	FC
6'3" PLASTER LINE	0'-0"	PL



KEY

- S4 50" @575W
- S4 36" @575W
- S4 26" @575W
- S4 19" @575W
- S4 10" @575W
- S4 05" @575W
- ROBERT JULIAT 933 SNX @2.5kw
- CXI 7.5" SCROLLER
- 6" FRESNEL @750W
- 8" FRESNEL @1k/2k
- HMI FRESNEL @2kw
- 12" IANARO FRESNEL @5kw
- CCT 10
- STRAND 15'
- ALT 3600 6x9 @575W
- ALT 3600 6x12 @1kw
- ALT 3600 6x16 @1kw
- S4 PAR WFL @575W
- S4 PAR MFL @575W
- S4 PAR NSP @575W
- S4 PAR VNSP @575W
- PAR 64 WFL @1kw
- PAR 64 MFL @1kw
- PAR 64 NSP @1kw
- PAR 64 VNSP @1kw
- MR16 12v | 75w
- IANIRO 3-CELL CYC @1kw
- BERKEY 4-CELL CYC @1kw
- L&E 4" DIMMABLE FLUOR @32w
- L&E 5" 3-CIR PAR20 STRIP @32w
- PAR56 3-CIR 8' STRIP @300w

TYPICAL



GENERAL NOTES

1. DROP ALL COLOR AND TEMPLATES PRIOR TO FOCUS
2. ALL UNITS TO BE SOFTPATCHED AND WORKING FOR FOCUS
3. PRODUCTION ELECTRICIAN TO PROVIDE EXTRA CUTS OF R104, R114, R119, R132, L209 AND L210 AS NEEDED DURING FOCUS
4. TECH TABLE TO BE AT LEAST 4' X 8' WITH (2) LITTLE LITES, (2) HEADSETS FOR DESIGNER AND ASSISTANT, MONITORS, AND ADDITIONAL OUTLETS FOR LAPTOP COMPUTERS
5. ABSOLUTELY NO SUBSTITUTIONS WITHOUT EXPRESS PERMISSION FROM THE LIGHTING DESIGNER OR HIS ASSISTANT
6. FLUORESCENT STRIPLIGHTS TO BE COOL WHITE (AT LEAST 5000K)
7. CXI SCROLLERS TO BE SET TO "MIXING" MOD

TEMPLATES

- ALL TEMPS SIZE "A"
- 1.GAM 223: LARGE BREAKUP
 - 2.GAM 697: CONSTRUCTION D
 - 3.GAM 920: OPEN BRANCHES
 - 4.GAM 641: SHAFTS
 - 5.GAM 866: RIPPLES #2
 - 6.GAM 305: POINTED BREAKUP
 - TWIN SPIN: FIRE
 - SPIN 1 | GAM 731: OPEN LEAVES 2
 - SPIN 2 | GAM 731: OPEN LEAVES 2
 - STATIC | GAM 353: FLAMES
 - TWIN SPIN: WATER
 - SPIN 1 | GAM 234: SUMMER LEAVES
 - SPIN 2 | GAM 222: SMALL BREAKUP
 - STATIC | GAM 793: WATER 4

This drawing represents visual concepts and suggested fixture placement only. The Designer is unqualified to determine the structural or electrical appropriateness of this design, and will not assume responsibility for improper engineering, construction, loading or use. All materials and construction must comply with the most stringent applicable Federal and Local Fire, Safety, Energy, and Environmental Codes.

ROMEO AND JULIET
MINNESOTA OPERA

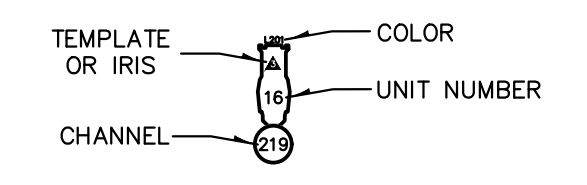
DIRECTOR: David Lefkovich
 CONDUCTOR: Ari Peltto
 LIGHTING: Steve TenEyck
 ASST. LD: Solomon Weisbard
 SCENIC: Erhard Rom
 COSTUMES: Jennifer Caprio
 DRAFT: Max Okst

STEVE TENEYCK DESIGN STUDIO
 (607)280-3973
 steneycj@gmail.com

KEY

- S4 50' @575W
- S4 36' @575W
- S4 26' @575W
- S4 19' @575W
- S4 10' @575W
- S4 05' @575W
- ROBERT JULIAT 933 SNX @2.5kw
- CXI 7.5" SCROLLER
- 6" FRESNEL @750W
- 8" FRESNEL @1k/2k
- HMI FRESNEL @2kw
- 12" IANARO FRESNEL @5kw
- IANIRO 3-CELL CYC @1kw
- BERKEY 4-CELL CYC @1kw
- L&E 4' DIMMABLE FLUOR @32w
- L&E 5' 3-CIR PAR20 STRIP @32w
- PAR56 3-CIR 8' STRIP @300w
- CCT 10
- STRAND 15"
- ALT 360Q 6x9 @575W
- ALT 360Q 6x12 @1kw
- ALT 360Q 6x16 @1kw
- S4 PAR WFL @575W
- S4 PAR MFL @575W
- S4 PAR NSP @575W
- S4 PAR VNSP @575W
- PAR 64 WFL @1kw
- PAR 64 MFL @1kw
- PAR 64 NSP @1kw
- PAR 64 VNSP @1kw
- MR16 12v | 75w

TYPICAL



GENERAL NOTES

1. DROP ALL COLOR AND TEMPLATES PRIOR TO FOCUS
2. ALL UNITS TO BE SOFTPATCHED AND WORKING FOR FOCUS
3. PRODUCTION ELECTRICIAN TO PROVIDE EXTRA CUTS FOR R104, R114, R119, R132, L209 AND L210 AS NEEDED DURING FOCUS
4. TECH TABLE TO BE AT LEAST 4' x 8' WITH (2) LITTLE LITES, (2) HEADSETS FOR DESIGNER AND ASSISTANT, MONITORS, AND ADDITIONAL OUTLETS FOR LAPTOP COMPUTERS
5. ABSOLUTELY NO SUBSTITUTIONS WITHOUT EXPRESS PERMISSION FROM THE LIGHTING DESIGNER OR HIS ASSISTANT
6. FLUORESCENT STRIPLIGHTS TO BE COOL WHITE (AT LEAST 5000°K)
7. CXI SCROLLERS TO BE SET TO "MIXING" MOD

TEMPLATES

- | | | | |
|--------------------|----------------------------|------------------|---------------------------------|
| ALL TEMPS SIZE "A" | | TWIN SPIN: FIRE | |
| | 1.GAM 223: LARGE BREAKUP | | SPIN 1 GAM 731: OPEN LEAVES 2 |
| | 2.GAM 697: CONSTRUCTION D | | SPIN 2 GAM 731: OPEN LEAVES 2 |
| | 3.GAM 520: OPEN BRANCHES | | STATIC GAM 353: FLAMES |
| | 4.GAM 641: SHAFTS | TWIN SPIN: WATER | |
| | 5.GAM 866: RIPPLES #2 | | SPIN 1 GAM 294: SUMMER LEAVES |
| | 6.GAM 305: POINTED BREAKUP | | SPIN 2 GAM 222: SMALL BREAKUP |
| | | | STATIC GAM 793: WATER 4 |

This drawing represents visual concepts and suggested fixture placement only. The Designer is unqualified to determine the structural or electrical appropriateness of this design, and will not assume responsibility for improper engineering, construction, handling, or use. All materials and construction must comply with the most stringent applicable Federal and Local Fire, Safety, Energy, and Environmental Codes.

ROMEO AND JULIET

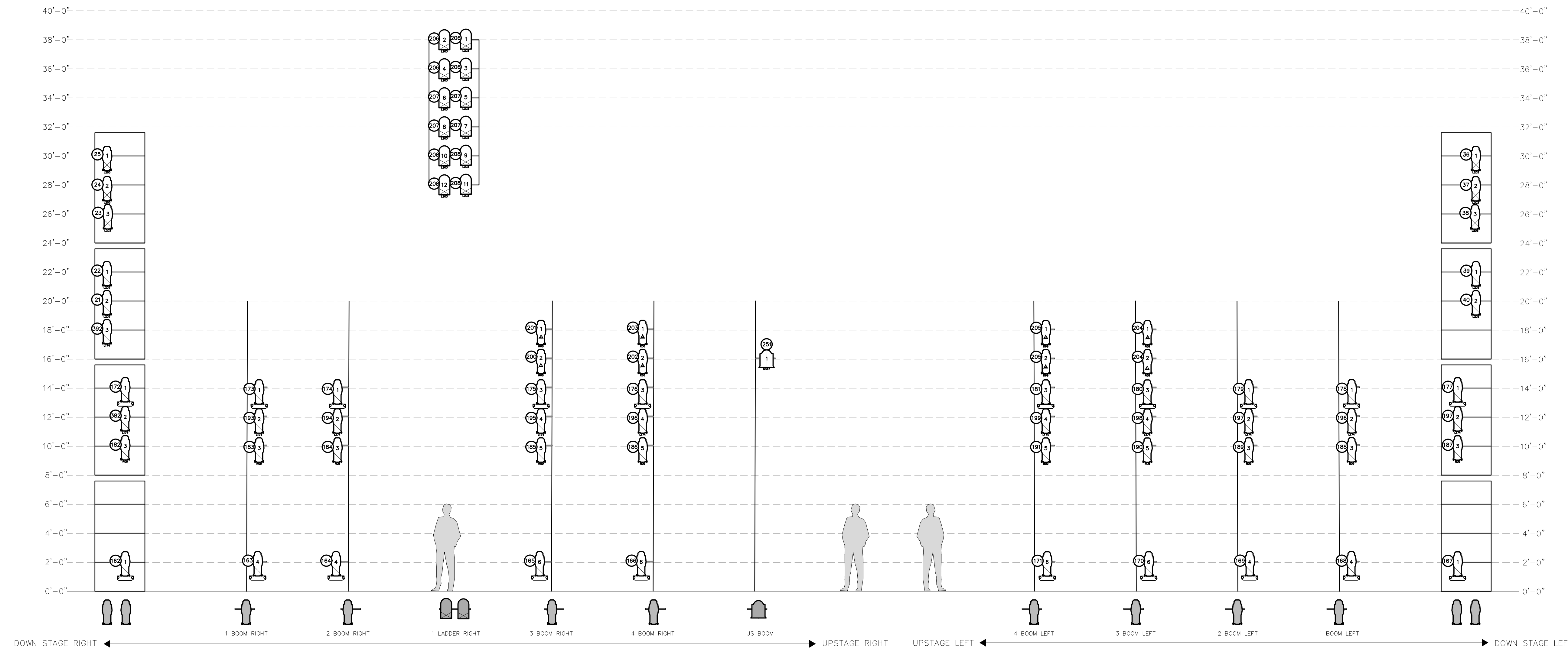
MINNESOTA OPERA

DIRECTOR: David Lefkovich
 CONDUCTOR: Ari Peltto
 LIGHTING: Steve TenEyck
 ASST. LD: Solomon Weisbard
 SCENIC: Erhard Rom
 COSTUMES: Jennifer Caprio
 DRAFT: Max Okst

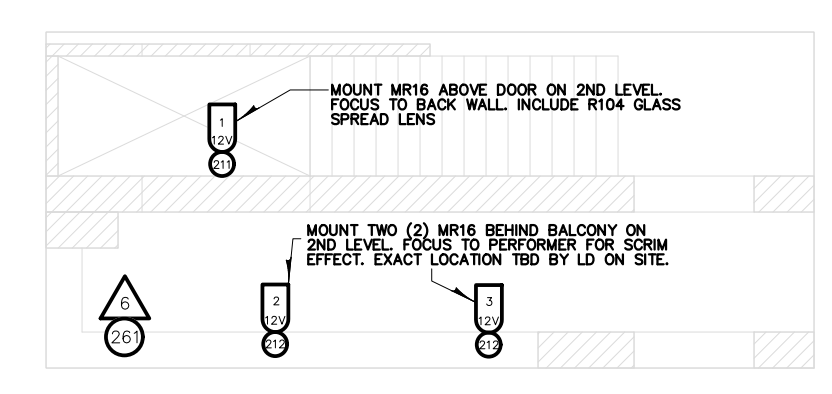
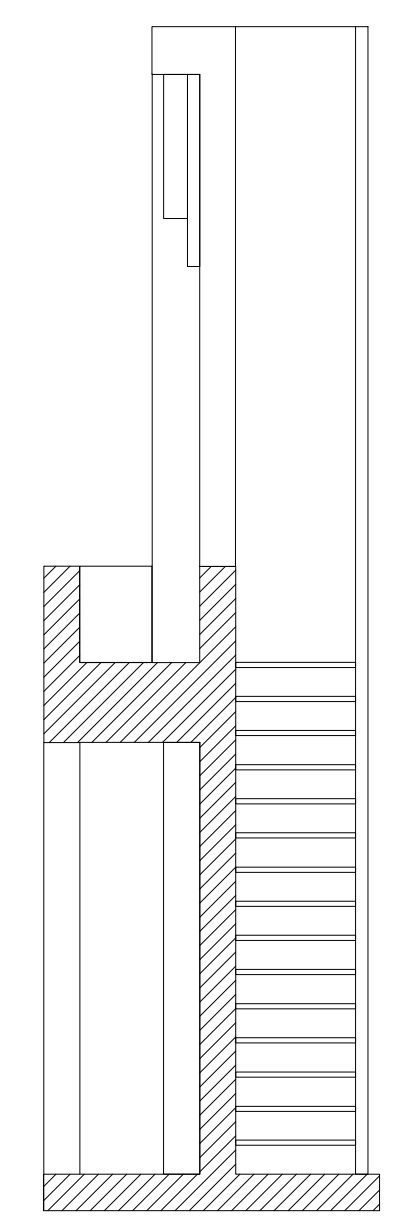
STEVE TENEYCK DESIGN STUDIO
 (607)280-3573
 steneyc@gmail.com

SHEET 2

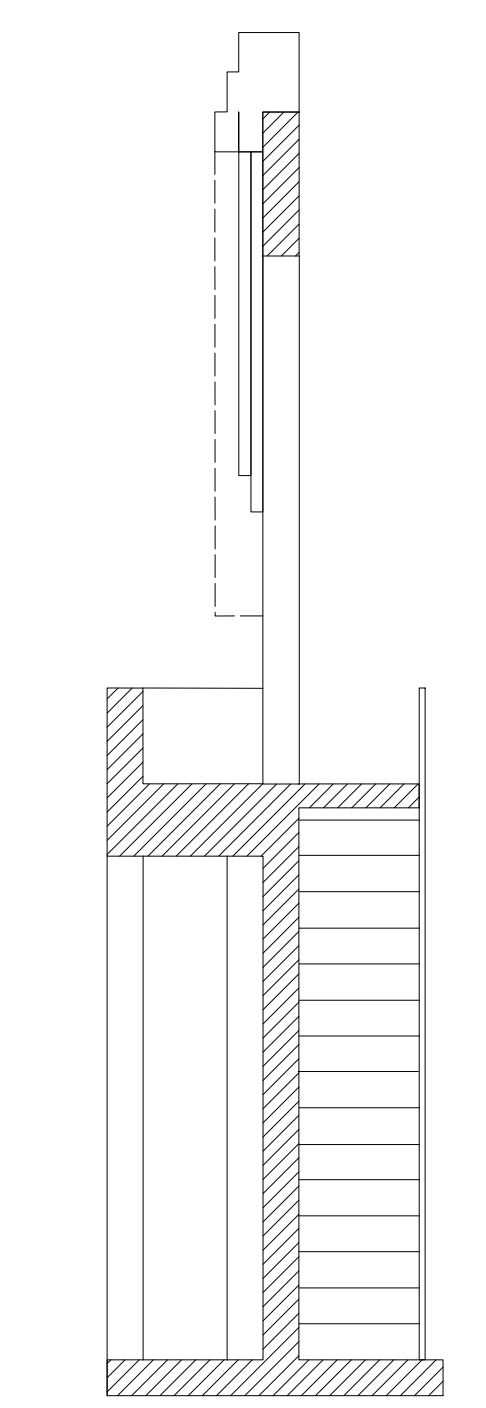
LX BOOM & SET MOUNTS
 SCALE: 1/4" = 1'-0"



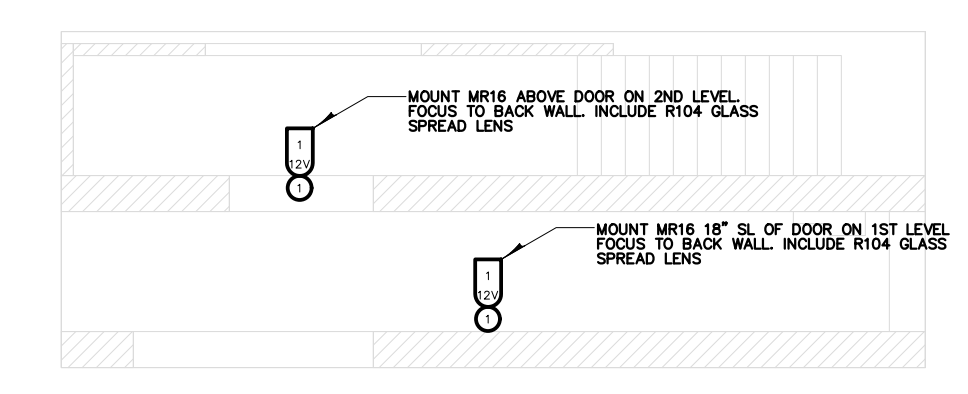
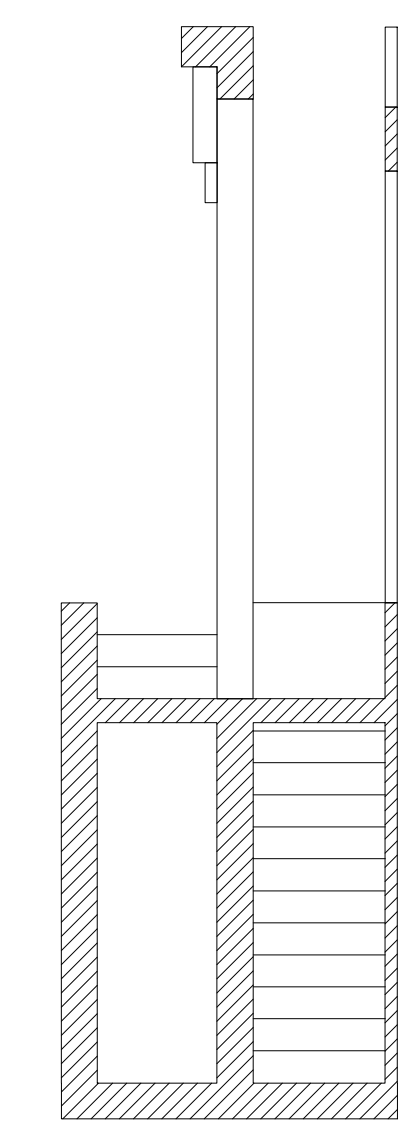
LIGHTING BOOMS
 1/4" = 1' - 0"



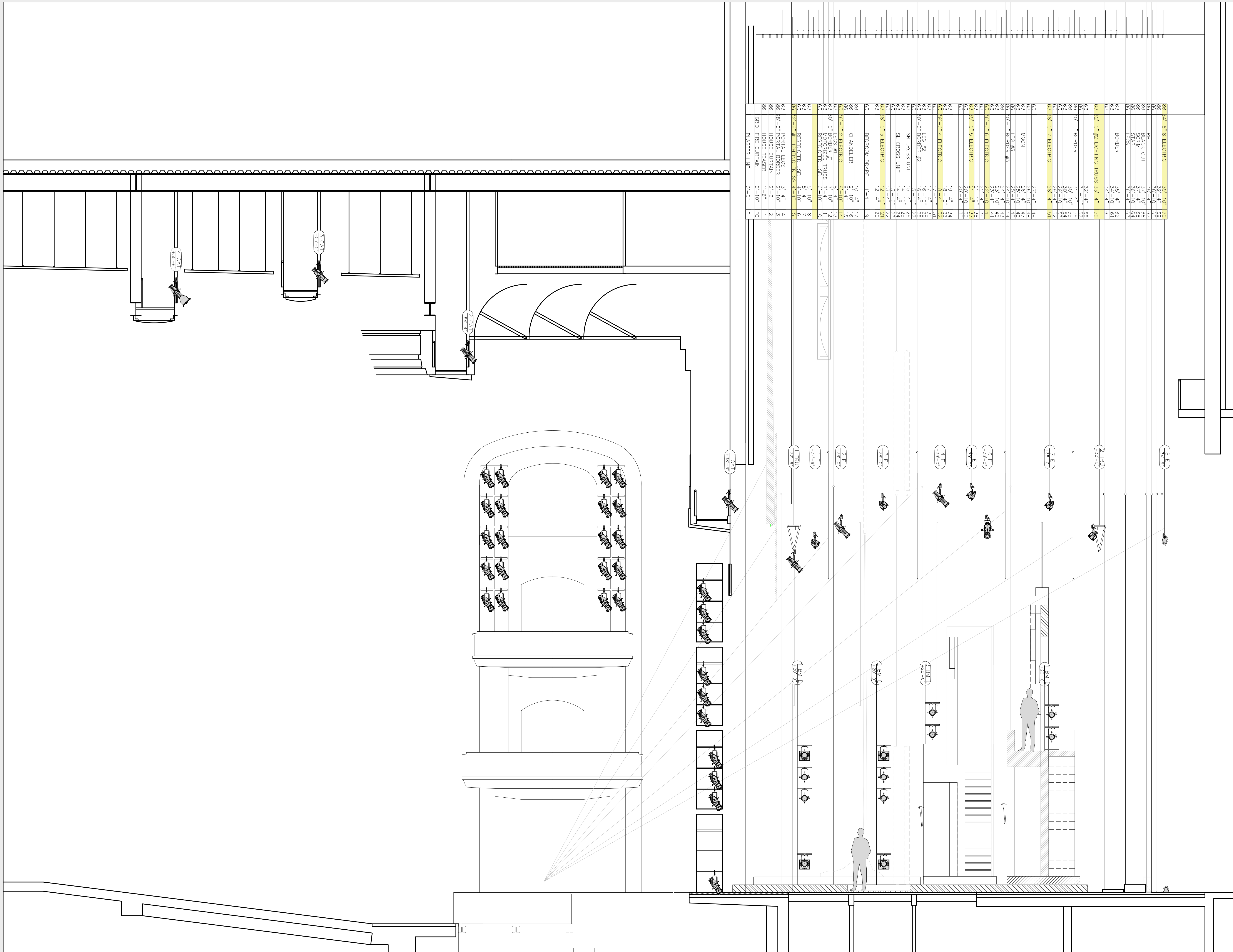
SET MOUNT UNIT #1
 1/4" = 1' - 0"



SET MOUNT UNIT #2
 1/4" = 1' - 0"



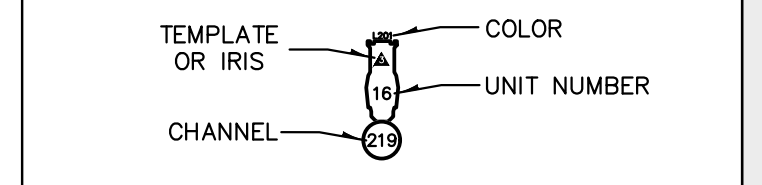
SET MOUNT UNIT #3
 1/4" = 1' - 0"



KEY

- S4 50' @575W
- S4 36' @575W
- S4 26' @575W
- S4 19' @575W
- S4 10' @575W
- S4 05' @575W
- ROBERT JULIAT 933 SNX @2.5kw
- CXI 7.5" SCROLLER
- 6" FRESNEL @750W
- 8" FRESNEL @1k/2k
- HMI FRESNEL @2kw
- 12" IANARO FRESNEL @5kw
- IANIRO 3-CELL CYC @1kw
- BERKEY 4-CELL CYC @1kw
- L&E 4' DIMMABLE FLUOR @32w
- L&E 5' 3-CIR PAR20 STRIP @32w
- PAR56 3-CIR 8' STRIP @300w
- CCT 10
- STRAND 15'
- ALT 360Q 6x9 @575W
- ALT 360Q 6x12 @1kw
- ALT 360Q 6x16 @1kw
- S4 PAR WFL @575W
- S4 PAR MFL @575W
- S4 PAR NSP @575W
- S4 PAR VNSP @575W
- PAR 64 WFL @1kw
- PAR 64 MFL @1kw
- PAR 64 NSP @1kw
- PAR 64 VNSP @1kw
- MR16 12v | 75w

TYPICAL



GENERAL NOTES

1. DROP ALL COLOR AND TEMPLATES PRIOR TO FOCUS
2. ALL UNITS TO BE SOFTPATCHED AND WORKING FOR FOCUS
3. PRODUCTION ELECTRICIAN TO PROVIDE EXTRA CUTS OF R104, R114, R119, R132, L209 AND L210 AS NEEDED DURING FOCUS
4. TECH TABLE TO BE AT LEAST 4' X 8' WITH (2) LITTLE LITES, (2) HEADSETS FOR DESIGNER AND ASSISTANT, MONITORS, AND ADDITIONAL OUTLETS FOR LAPTOP COMPUTERS
5. ABSOLUTELY NO SUBSTITUTIONS WITHOUT EXPRESS PERMISSION FROM THE LIGHTING DESIGNER OR HIS ASSISTANT
6. FLUORESCENT STRIPLIGHTS TO BE COOL WHITE (AT LEAST 5000K)
7. CXI SCROLLERS TO BE SET TO "MIXING" MOD

TEMPLATES

- ALL TEMPS SIZE "A"
- 1.GAM 223: LARGE BREAKUP
 - 2.GAM 697: CONSTRUCTION D
 - 3.GAM 520: OPEN BRANCHES
 - 4.GAM 641: SHAFTS
 - 5.GAM 866: RIPPLES #2
 - 6.GAM 305: POINTED BREAKUP
- TWIN SPIN: FIRE
- SPIN 1 | GAM 731: OPEN LEAVES 2
 - SPIN 2 | GAM 731: OPEN LEAVES 2
 - STATIC | GAM 353: FLAMES
- TWIN SPIN: WATER
- SPIN 1 | GAM 294: SUMMER LEAVES
 - SPIN 2 | GAM 222: SMALL BREAKUP
 - STATIC | GAM 793: WATER 4

This drawing represents visual concepts and suggested fixture placement only. The Designer is unqualified to determine the structural or electrical appropriateness of this design, and will not assume responsibility for improper engineering, construction, handling, or use. All materials and construction must comply with the most stringent applicable Federal and Local Fire, Safety, Energy, and Environmental Codes.

ROMEO AND JULIET
MINNESOTA OPERA

DIRECTOR: David Lefkovich
 CONDUCTOR: Ari Peito
 LIGHTING: Steve TenEyck
 ASST. LD: Solomon Weisbard
 SCENIC: Erhard Rom
 COSTUMES: Jennifer Caprio
 DRAFT: Max Okst

STEVE TENEYCK
 DESIGN STUDIO
 (607)280-3573
 steneyc@pmj.com

SHEET
3
 OF 3

LIGHTING SECTION
 SCALE: 1/4" = 1'-0"