

Shop Order: *The Antigone Project*

Revision A

Production Schedule

Delivery:	11/6/2019	Preview:	12/3/2019
Spotting Call:	11/7/2019	Opening:	12/5/2019
Load-In:	11/11/2019	Closing:	12/8/2019
Focus:	11/18/2019	Load-Out>Returns	12/8/2019

Contact Information

Venue: Clark Theatre
953 Danby Rd.
Ithaca, NY 14850

Billing: Mary Scheidegger
Office: (607) 274-3290
scheideg@ithaca.edu

Producer: Catherine Weidner
Office: (607) 274-1304
cweidner1@ithaca.edu

PE: Max Okst
(631) 605-9525
okstm18@gmail.com

ME: Keegan Webber
(508) 808-5592
kwebber@ithaca.edu

Lighting Designer: Steve TenEyck
(607) 280-3573
steneck@ithaca.edu

Disclaimers

- No substitutions without prior written consent of design team and written or verbal approval from production electrician.
- Any necessary revisions or substitutions will be fully disclosed at time of bid.
- Package must include all necessary power supplies, connectors, cabling, controls, or miscellaneous equipment so as to render each specified piece of equipment a fully functional system.

Notes

- All conventional fixtures, accessories, and color frames to be painted flat black.
- All conventional fixtures to be supplied with appropriate, specified lamp and 20A stagepin connector.
Conventional fixtures to be bench focused prior to shop load out.

Delivery Schedule: *The Antigone Project*

Revision A

Delivery for November 6, 2019 (No later than 3pm)

Category	Items to be Delivered	Delivery Location
Conventionals	All Items	Stage Door
Intelligent	All Items	Stage Door
Control	All Items	Stage Door
Cable	All Items	Stage Door
Iron	All Items	Stage Door
Perishables	All Items	Stage Door

Delivery Notes

- All items should be delivered to designated location at the Clark Theater.
- All cable should be sorted by length and type into labeled bins by supplier prior to delivery.
- All containers should have an attached manifest detailing its contents.
- Please inform PE of any delays as soon as possible.

Equipment List: *The Antigone Project*

Revision A

Conventional Fixtures

Total	Quantity	Spare	Item	Notes
45	40	5	Source 4 36° @575W	All with C-Clamps
6	4	2	Source 4 50° @575W	All with C-Clamps
19	16	3	Source 4 26° @750W	All with C-Clamps
19	16	3	Source 4 36° @750W	All with C-Clamps
55	48	7	Source 4 Par NSP @575W	All with C-Clamps
5	4	1	Source 4 Par MFL @575W	All with C-Clamps
14	12	2	Source 4 Par WFL @575W	All with C-Clamps
30	26	4	26° Seachanger @750W	All with C-Clamps

Intelligent Fixtures

Total	Quantity	Spare	Item	Notes
12	9	3	Philips Punchlitte 220	All with C-Clamps
6	4	2	Clay Paky Alpha Profile 700	All with Clamps
19	16	3	Chauvet R1	All with Clamps
2	1	1	MDG Hazer	w/ CO2 Can and Hose

Control

Total	Quantity	Spare	Item	Notes
3	2	1	ETC ION	All with Power Cable and Monitor
2	1	1	ETC Fader Wing	With Power Cable
8	6	2	Computer Monitor	w/ video cable and power
5	4	1	Computer Mouse	Wired
5	4	1	Computer Keyboard	Wired
4	3	1	Littlelite Gooseneck Lamp	All with Power Cable
3	2	1	ETC Client Console (RVI)	w/ power supply
3	2	1	ETC 4P Gateway	All with C-Clamps
3	2	1	ETC 2P Gateway	All with C-Clamps
5	4	1	Edison Power Strip	Black
5	4	1	UPS Power Supply	---

Cable

Total	Quantity	Spare	Item	Notes
10	6	4	SOCA 6C Straight Break-Out	19 Pin SOCA to Stage Pin
25	20	5	SOCA 6C Staggered Break-Out	19 Pin SOCA to Stage Pin

2	0	2	50' SOCA	19 Pin
17	14	3	25' SOCA	19 Pin
7	5	2	10' SOCA	19 Pin
60	55	5	Stage Pin Two-fers	Stage Pin Plug and Connectors
7	2	5	100' Stage Pin	Stage Pin Plug and Connectors
20	15	5	50' Stage Pin	Stage Pin Plug and Connectors
20	15	5	25' Stage Pin	Stage Pin Plug and Connectors
21	6	15	10' Stage Pin	Stage Pin Plug and Connectors
37	22	15	5' Stage Pin	Stage Pin Plug and Connectors
4	2	2	50' L6-20	L6-20 Plug and Connectors
4	2	2	25' L6-20	L6-20 Plug and Connectors
5	0	5	50' DMX	5 Pin DMX
15	10	5	25' DMX	5 Pin DMX
7	5	2	15' DMX	5 Pin DMX
60	50	10	10' DMX	5 Pin DMX
60	50	10	5' DMX	5 Pin DMX
8	5	3	50' Edison	Edison Plug and Connectors
40	35	5	25' Edison	Edison Plug and Connectors
7	5	2	10' Powercon Jumpers	---
18	15	3	5' Powercon Jumpers	---
7	5	2	50' Ethernet	Cat 6, Plug to Plug
5	3	2	25' Ethernet	Cat 6, Plug to Plug
5	3	2	10' Ethernet	Cat 6, Plug to Plug
15	10	5	DMX Terminators	5 Pin
23	20	3	Cube Tap	Edison / Black
50	45	5	Male Stage Pin to Female Edison	---
12	10	2	Male L6-20 To Blue Powercon	5'
3	2	1	L6-20 Twofer	---

Iron				
Total	Quantity	Spare	Item	Notes
225	200	25	Safety Cable	Black
84	64	20	7.5" Gel Frame	Black, Metal
110	80	30	6.25" Gel Frame	Black, Metal
26	20	6	S4 Size A Gobo Holder	---
3	2	1	10' Schedule 40 1-1/2" Pipe	Black
3	2	1	7' Schedule 40 1-1/2" Pipe	Black
10	8	2	50lb Boom Base 1-1/2" Threaded	Black
18	16	2	36lb Stage Weight	Black
12	8	4	12" Side Arm	Black
115	100	15	6.25" Top Hat	Black
12	10	2	Punch Light Top Hat	Black
10	8	2	Sliding T's	Black

6	4	2	Tail Down Clamp 9' Schedule 40 1-1/2" Pipe	Black
---	---	---	---	-------

Perishables: *The Antigone Project*

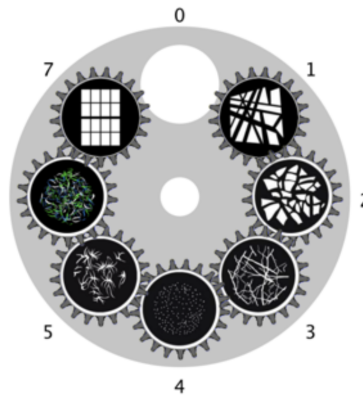
Revision A

Perishables				
Total	Quantity	Spare	Item	Notes
3	3	0	2" Black Gaff Tape	---
3	3	0	2" White Gaff Tape	---
5	5	0	3/4" Electrical Tape	Black
5	5	0	3/4" Electrical Tape	White
5	5	0	3/4" Electrical Tape	Purple
5	5	0	3/4" Electrical Tape	Orange
2	2	0	1" J-Lar Transparent Tape	---
2	2	0	200 yd. Black Tie Line Roll	Not waxed
2	2	0	Black Sharpies	Box of 12
2	2	0	Silver Sharpies	Box of 12
2	1	1	MDG Hazer Fluid	Bottle
5	5	0	HPL 750w Lamp 120V	For Source 4 Units
10	10	0	HPL 575w Lamp 120V	For Source 4 Units
8	6	2	G:635 A Size Gobo	---
47	43	4	R132 Gel 20" x 24" Sheet	66 @ 6.25"
4	3	1	L763 Gel 20" x 24" Sheet	48 @ 7.5"
6	5	1	L174 Gel 20" x 24" Sheet	16 @ 6.25"
7	6	1	L203 Gel 20" x 24" Sheet	8 @ 6.25"
3	2	1	R115 Gel 20" x 24" Sheet	12 @ 7.5"
19	16	3	L202 Gel 20" x 24" Sheet	40 @ 6.25"
3	2	1	R3204 Gel 20" x 24" Sheet	4 @ 7.5"

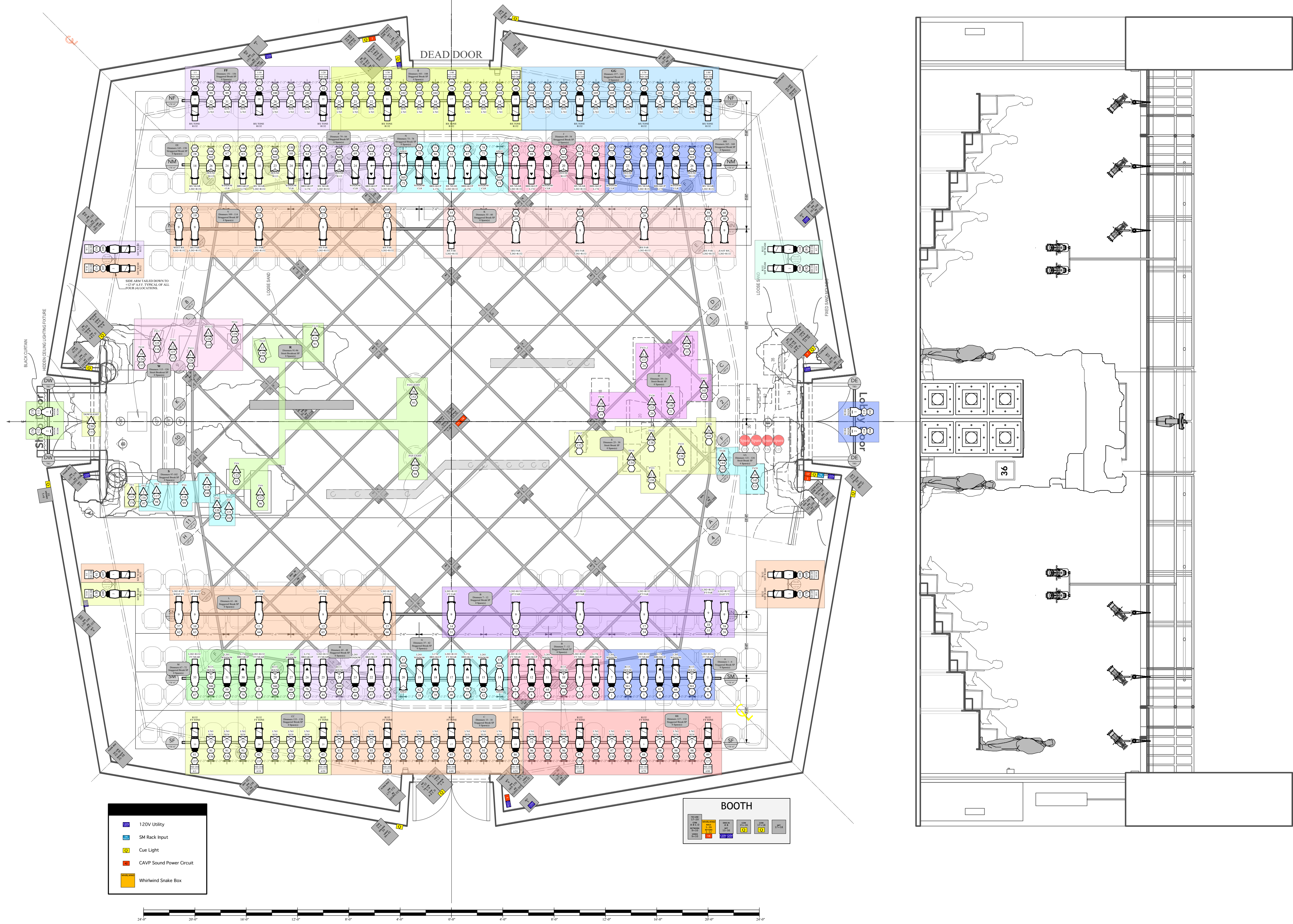
GOBO Load: *The Antigone Project*

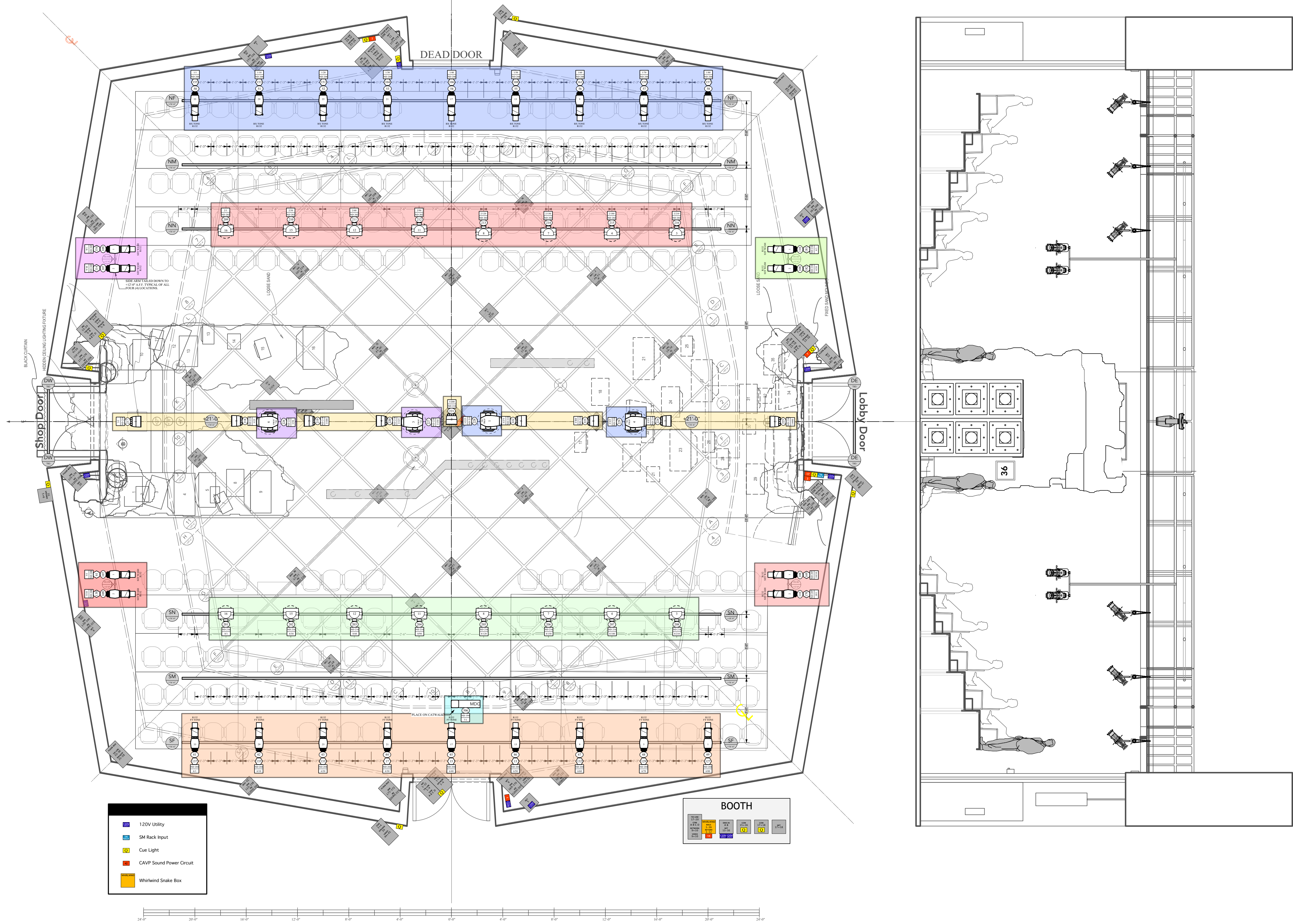
Revision A

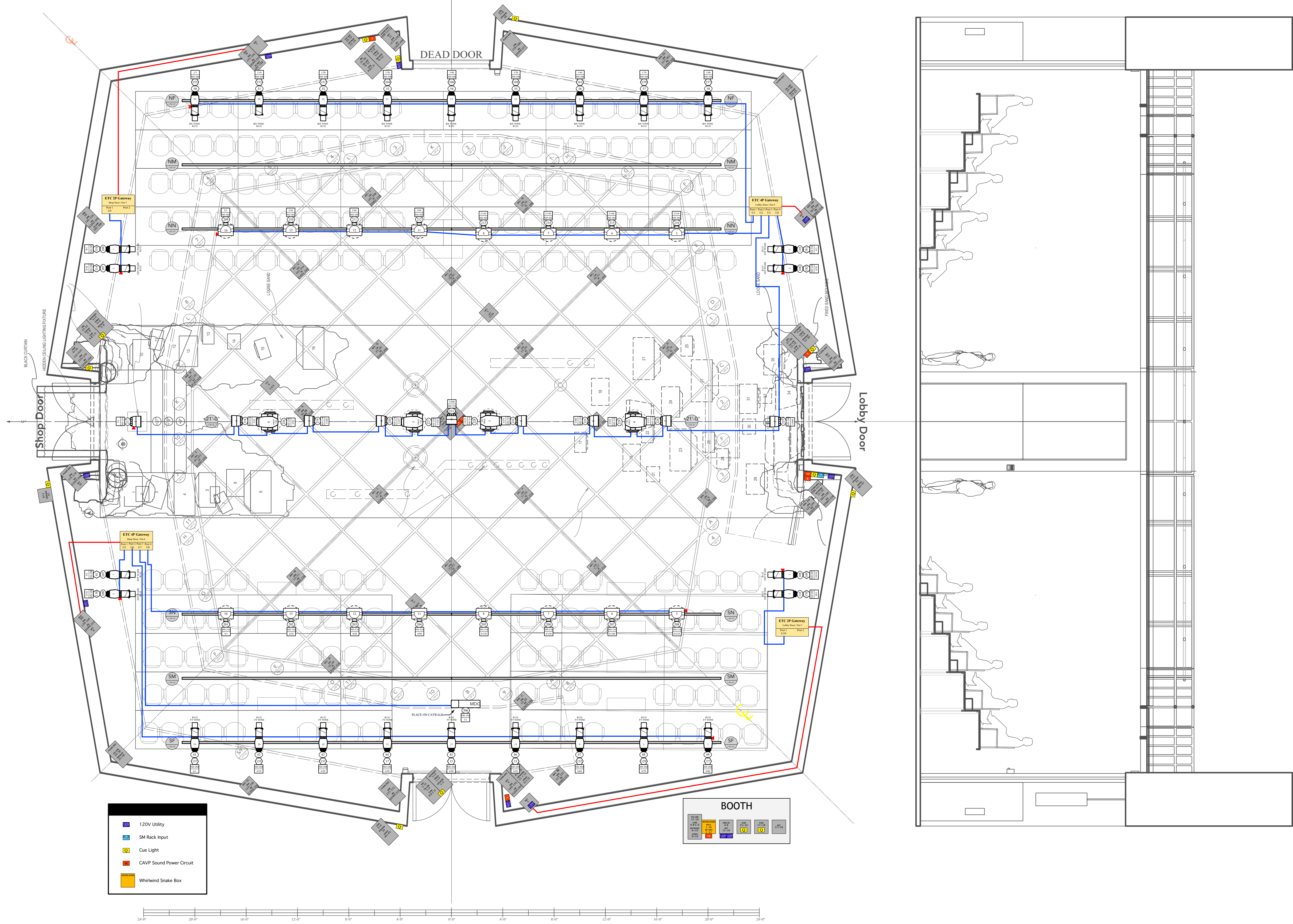
Gobo Load for Movers



ALPHA PROFILE
STOCK GOBO LOAD







LD: Steve TenEyck
 (607) 280-3573
 steneych@ithaca.edu

PE: Max Okst
 (631) 605-9525
 mokst@ithaca.edu

Dimmer	Chan	Position	Unit#	Color	Addr	Inst Type	Load	Gobo	U1
1	(65)	SOUTH MID	7	L203		S4 26° 750	-	-	-
2	(501)	SOUTH MID	2	R115		WFL S4 PAR	-	-	-
	"	"	6	"		"	"	"	"
3	(8)	SOUTH MID	5	L202+R132		S4 36°	-	-	-
4	(82)	SOUTH MID	4	L174		36° S4 750	G#:635	-	-
5	(66)	SOUTH MID	3	L203		S4 26° 750	-	-	-
6	(9)	SOUTH MID	1	L202+R132		S4 36°	-	-	-
7	(6)	SOUTH MID	13	L202+R132		S4 36°	-	-	-
8	(80)	SOUTH MID	12	L174		36° S4 750	G#:635	-	-
9	(64)	SOUTH MID	11	L203		S4 26° 750	-	-	-
10	(501)	SOUTH MID	10	R115		WFL S4 PAR	-	-	-
11	(7)	SOUTH MID	9	L202+R132		S4 36°	-	-	-
12	(38)	SOUTH NEAR	9	L202+R132		S4 36°	-	-	-
	(81)	SOUTH MID	8	L174		36° S4 750	G#:635	"	"
13	(46)	SOUTH FAR	13	R132	6/50	S4 26° SEA	-	-	ND 204
14	(95)	SOUTH FAR	14	L763		MFL S4 PAR	-	-	-
	"	"	15	"		"	"	"	"
	"	"	16	"		"	"	"	"
15	(45)	SOUTH FAR	17	R132	6/40	S4 26° SEA	-	-	ND 204
16	(94)	SOUTH FAR	18	L763		MFL S4 PAR	-	-	-
	"	"	19	"		"	"	"	"
	"	"	20	"		"	"	"	"
17	(44)	SOUTH FAR	21	R132	6/30	S4 26° SEA	-	-	ND 204

Dimmer	Chan	Position	Unit#	Color	Addr	Inst Type	Load	Gobo	U1
18	(93)	SOUTH FAR	22	L763		MFL S4 PAR	-	-	-
	"	"	23	"		"	-	"	"
	"	"	24	"		"	-	"	"
19	(133)	SET	18	-		TBD	-	-	-
20	(135)	SET	20	-		TBD	-	-	-
21	(140)	SET	24	-		TBD	-	-	-
22	(143)	SET	27	-		TBD	-	-	-
23	(141)	SET	25	-		TBD	-	-	-
24	(137)	SET	21.2	-		TBD	-	-	-
31	(14)	SOUTH NEAR	9	L202+R132		S4 36°	-	-	-
32	(15)	SOUTH NEAR	9	L202+R132		S4 36°	-	-	-
33	(16)	SOUTH NEAR	9	L202+R132		S4 36°	-	-	-
34	(17)	SOUTH NEAR	9	L202+R132		S4 36°	-	-	-
35	(18)	SOUTH NEAR	9	L202+R132		S4 36°	-	-	-
36	(19)	NORTH NEAR	9	L202+R132		S4 36°	-	-	-
37	(504)	SOUTH MID	14	-		50° Source Four	-	-	-
	"	"	20	"		"	-	"	"
38	(62)	SOUTH MID	19	L203		S4 26° 750	-	-	-
39	(78)	SOUTH MID	18	L174		36° S4 750	-	G#:635	-
40	(5)	SOUTH MID	17	L202+R132		S4 36°	-	-	-
41	(79)	SOUTH MID	16	L174		36° S4 750	-	G#:635	-
42	(63)	SOUTH MID	15	L203		S4 26° 750	-	-	-
43	(76)	SOUTH MID	26	L174		36° S4 750	-	G#:635	-
44	(3)	SOUTH MID	25	L202+R132		S4 36°	-	-	-
45	(500)	SOUTH MID	24	R115		WFL S4 PAR	-	-	-

Dimmer	Chan	Position	Unit#	Color	Addr	Inst Type	Load	Gobo	U1
46	(61)	SOUTH MID	23	L203		S4 26° 750	-	-	
47	(77)	SOUTH MID	22	L174		36° S4 750		G#:635	-
48	(4)	SOUTH MID	21	L202+R132		S4 36°	-	-	
49	(33)	NORTH MID	14	L202+R132		S4 36°	-	-	
50	(88)	NORTH MID	4	L174		36° S4 750		G#:635	-
51	(72)	NORTH MID	24	CLR		S4 26° 750	-	-	
52	(503)	NORTH MID	20	R115		WFL S4 PAR	-	-	
53	(34)	NORTH MID	14	L202+R132		S4 36°	-	-	
54	(89)	NORTH MID	4	L174		36° S4 750		G#:635	-
55	(23)	NORTH NEAR	9	L202+R132		S4 36°	-	-	
56	(24)	NORTH NEAR	9	L202+R132		S4 36°	-	-	
57	(25)	NORTH NEAR	9	L202+R132		S4 36°	-	-	
58	(26)	NORTH NEAR	9	L202+R132		S4 36°	-	-	
59	(27)	NORTH NEAR	9	L202+R132		S4 36°	-	-	
60	(40)	NORTH NEAR	9	L202+R132		S4 36°	-	-	
61	(107)	TAIL DOWN S.W.	1	R132	5/1	S4 36° SEA		G#635	ND 208
62	(37)	SOUTH NEAR	9	L202+R132		S4 36°	-	-	
63	(10)	SOUTH NEAR	9	L202+R132		S4 36°	-	-	
64	(11)	SOUTH NEAR	9	L202+R132		S4 36°	-	-	
65	(12)	SOUTH NEAR	9	L202+R132		S4 36°	-	-	
66	(13)	SOUTH NEAR	9	L202+R132		S4 36°	-	-	
67	(1)	SOUTH MID	33	L202+R132		S4 36°	-	-	
68	(500)	SOUTH MID	28	R115		WFL S4 PAR	-	-	
	"	"	32	"		"		"	"
69	(59)	SOUTH MID	31	L203		S4 26° 750	-	-	

Dimmer	Chan	Position	Unit#	Color	Addr	Inst Type	Load	Gobo	U1
70	(75)	SOUTH MID	30	L174		36° S4 750		G#:635	-
71	(2)	SOUTH MID	29	L202+R132		S4 36°		-	-
72	(60)	SOUTH MID	27	L203		S4 26° 750		-	-
73	(505)	NORTH MID	17	-		50° Source Four		-	-
	"	"	"	"		"		"	"
74	(70)	NORTH MID	24	CLR		S4 26° 750		-	-
75	(86)	NORTH MID	4	L174		36° S4 750		G#:635	-
76	(32)	NORTH MID	14	L202+R132		S4 36°		-	-
77	(87)	NORTH MID	4	L174		36° S4 750		G#:635	-
78	(71)	NORTH MID	24	CLR		S4 26° 750		-	-
79	(84)	NORTH MID	4	L174		36° S4 750		G#:635	-
80	(30)	NORTH MID	14	L202+R132		S4 36°		-	-
81	(502)	NORTH MID	20	R115		WFL S4 PAR		-	-
82	(69)	NORTH MID	24	CLR		S4 26° 750		-	-
83	(85)	NORTH MID	4	L174		36° S4 750		G#:635	-
84	(31)	NORTH MID	14	L202+R132		S4 36°		-	-
91	(131)	SET	16	-		TBD		-	-
92	(130)	SET	15	-		TBD		-	-
93	(152)	SET	36	-		9568.1.1.0.0		-	-
94	(153)	SET	37	-		PAR 30 SPOT 3200K°		-	-
95	(122)	SET	8	-		TBD		-	-
96	(123)	SET	9	-		TBD		-	-
97	(116)	SET	2	-		TBD		-	-
98	(117)	SET	3	-		TBD		-	-

Dimmer	Chan	Position	Unit#	Color	Addr	Inst Type	Load	Gobo	U1
99	(118)	SET	4	-		TBD		-	-
100	(119)	SET	5	-		TBD		-	-
101	(120)	SET	6	-		TBD		-	-
102	(121)	SET	7	-		TBD		-	-
103	(101)	NORTH FAR	22	L763		MFL S4 PAR		-	-
	"	"	23	"		"		"	"
	"	"	24	"		"		"	"
104	(53)	NORTH FAR	21	R132	1/30	S4 26° SEA		-	ND 206
105	(102)	NORTH FAR	18	L763		MFL S4 PAR		-	-
	"	"	19	"		"		"	"
	"	"	20	"		"		"	"
106	(54)	NORTH FAR	17	R132	1/40	S4 26° SEA		-	ND 206
107	(103)	NORTH FAR	14	L763		MFL S4 PAR		-	-
	"	"	15	"		"		"	"
	"	"	16	"		"		"	"
108	(55)	NORTH FAR	13	R132	1/50	S4 26° SEA		-	ND 206
109	(22)	NORTH NEAR	9	L202+R132		S4 36°		-	-
110	(21)	NORTH NEAR	9	L202+R132		S4 36°		-	-
111	(20)	NORTH NEAR	9	L202+R132		S4 36°		-	-
113	(39)	NORTH NEAR	9	L202+R132		S4 36°		-	-
114	(107)	TAIL DOWN N.W.	2	R132	9/10	S4 36° SEA		G#635	ND 205
115	(124)	SET	10	-		TBD		-	-
116	(125)	SET	11	-		TBD		-	-
117	(127)	SET	12	-		TBD		-	-

Dimmer	Chan	Position	Unit#	Color	Addr	Inst Type	Load	Gobo	U1
118	(126)	SET	13.1	-		TBD		-	-
119	(128)	SET	13.2	-		TBD		-	-
120	(129)	SET	14	-		TBD		-	-
121	(145)	SET	29	-		TBD		-	-
122	(144)	SET	28	-		TBD		-	-
127	(49)	SOUTH FAR	1	R132	6/80	S4 26° SEA		-	ND 204
128	(98)	SOUTH FAR	2	L763		MFL S4 PAR		-	-
	"	"	3	"		"		"	"
	"	"	4	"		"		"	"
129	(48)	SOUTH FAR	5	R132	6/70	S4 26° SEA		-	ND 204
130	(97)	SOUTH FAR	6	L763		MFL S4 PAR		-	-
	"	"	7	"		"		"	"
	"	"	8	"		"		"	"
132	(47)	SOUTH FAR	9	R132	6/60	S4 26° SEA		-	ND 204
	(96)	"	10	L763		MFL S4 PAR		"	-
	"	"	11	"		"		"	"
	"	"	12	"		"		"	"
133	(43)	SOUTH FAR	25	R132	6/20	S4 26° SEA		-	ND 204
134	(92)	SOUTH FAR	26	L763		MFL S4 PAR		-	-
	"	"	27	"		"		"	"
	"	"	28	"		"		"	"
135	(42)	SOUTH FAR	29	R132	6/10	S4 26° SEA		-	ND 204

Dimmer	Chan	Position	Unit#	Color	Addr	Inst Type	Load	Gobo	U1
136	(91)	SOUTH FAR	30	L763		MFL S4 PAR	-	-	-
	"	"	31	"		"	-	"	"
	"	"	32	"		"	-	"	"
137	(41)	SOUTH FAR	33	R132	6/1	S4 26° SEA	-	-	ND 204
138	(109)	TAIL DOWN S.W.	2	R132	5/10	S4 36° SEA	-	-	ND 208
145	(28)	NORTH MID	14	L202+R132		S4 36°	-	-	-
146	(502)	NORTH MID	23	R115		WFL S4 PAR	-	-	-
	"	"	26	"		"	-	"	"
147	(67)	NORTH MID	24	CLR		S4 26°	-	-	-
148	(83)	NORTH MID	4	L174		36° S4 750	-	G#:635	-
149	(29)	NORTH MID	14	L202+R132		S4 36°	-	-	-
150	(68)	NORTH MID	24	CLR		S4 26° 750	-	-	-
151	(52)	NORTH FAR	25	R132	1/20	S4 26° SEA	-	-	ND 206
152	(100)	NORTH FAR	26	L763		MFL S4 PAR	-	-	-
	"	"	27	"		"	-	"	"
	"	"	28	"		"	-	"	"
153	(51)	NORTH FAR	29	R132	1/10	S4 26° SEA	-	-	ND 206
154	(99)	NORTH FAR	30	L763		MFL S4 PAR	-	-	-
	"	"	31	"		"	-	"	"
	"	"	32	"		"	-	"	"
155	(50)	NORTH FAR	33	R132	1/1	S4 26° SEA	-	-	ND 206
156	(109)	TAIL DOWN N.W.	1	R132	9/1	S4 36° SEA	-	-	ND 205
157	(58)	NORTH FAR	1	R132	1/80	S4 26° SEA	-	-	ND 206

Dimmer	Chan	Position	Unit#	Color	Addr	Inst Type	Load	Gobo	U1
158	(106)	NORTH FAR	2	L763		MFL S4 PAR	-	-	-
	"	"	3	"		"		"	"
	"	"	4	"		"		"	"
159	(57)	NORTH FAR	5	R132	1/70	S4 26° SEA	-		ND 206
160	(105)	NORTH FAR	6	L763		MFL S4 PAR	-	-	-
	"	"	7	"		"		"	"
	"	"	8	"		"		"	"
161	(56)	NORTH FAR	9	R132	1/60	S4 26° SEA	-		ND 206
162	(104)	NORTH FAR	10	L763		MFL S4 PAR	-	-	-
	"	"	11	"		"		"	"
	"	"	12	"		"		"	"
163	(73)	NORTH MID	24	CLR		S4 26° 750	-	-	-
164	(503)	NORTH MID	23	R115		WFL S4 PAR	-	-	-
	"	"	26	"		"		"	"
165	(35)	NORTH MID	14	L202+R132		S4 36°	-	-	-
166	(90)	NORTH MID	4	L174		36° S4 750		G#:635	-
167	(74)	NORTH MID	24	CLR		S4 26° 750	-	-	-
168	(36)	NORTH MID	14	L202+R132		S4 36°	-	-	-
169	(108)	TAIL DOWN S.E.	1	R132	10/10	S4 36° SEA		G#635	ND 207
170	(110)	TAIL DOWN S.E.	2	R132	10/1	S4 36° SEA	-		ND 207
173	(230)	SET	1	-		-	-	-	-
174	(115)	SET	1	-		TBD	-	-	-
175	(111)	DOOR WEST	1	R3204		S4 PAR MFL	-	-	-
176	(112)	DOOR WEST	2	R3204		S4 PAR MFL	-	-	-

Dimmer	Chan	Position	Unit#	Color	Addr	Inst Type	Load	Gobo	U1
181	(110)	TAIL DOWN N.E.	1	R132	4/1	S4 36° SEA		-	ND 210
182	(108)	TAIL DOWN N.E.	2	R132	4/10	S4 36° SEA		G#635	ND 210
183	(113)	DOOR EAST	1	R3204		S4 PAR MFL		-	-
184	(114)	DOOR EAST	2	R3204		S4 PAR MFL		-	-

LD: Steve TenEyck
(607) 280-3573
steneych@ithaca.edu

PE: Max Okst
(631) 605-9525
mokst@ithaca.edu

TABLE OF CONTENTS

-	1	TAIL DOWN N.E.	5
NORTH NEAR	1	TAIL DOWN S.E.	5
GRID CENTER	2	SOUTH FAR	6
GRID SOUTH	2	DOOR WEST	7
SOUTH NEAR	3	SET	8
NORTH FAR	4	DOOR EAST	9
TAIL DOWN S.W.	5	NORTH MID	10
TAIL DOWN N.W.	5	SOUTH MID	12

LD: Steve TenEyck
 (607) 280-3573
 steneych@ithaca.edu

-

Unit#	Chan	Dim	Color	Addr	Instrument Type	Load	Gobo
	(506)		-	7/1	MDG Atmosphere APS Hazer		-

NORTH NEAR

Unit#	Chan	Dim	Color	Addr	Instrument Type	Load	Gobo
3	(216)		-	2/210	ROGUE 1		-
4	(215)		-	2/180	ROGUE 1		-
7	(214)		-	2/150	ROGUE 1		-
8	(213)		-	2/120	ROGUE 1		-
9	(39)	113	L202+R132		S4 36°		-
9	(19)	36	L202+R132		S4 36°		-
9	(20)	111	L202+R132		S4 36°		-
9	(21)	110	L202+R132		S4 36°		-
9	(22)	109	L202+R132		S4 36°		-
9	(23)	55	L202+R132		S4 36°		-
9	(24)	56	L202+R132		S4 36°		-
9	(25)	57	L202+R132		S4 36°		-
9	(26)	58	L202+R132		S4 36°		-
9	(40)	60	L202+R132		S4 36°		-
9	(27)	59	L202+R132		S4 36°		-
11	(212)		-	2/90	ROGUE 1		-
12	(211)		-	2/60	ROGUE 1		-
15	(210)		-	2/30	ROGUE 1		-
16	(209)		-	2/1	ROGUE 1		-

GRID CENTER

Unit#	Chan	Dim	Color	Addr	Instrument Type	Load	Gobo
1	(228)	-		3/225	ALPHA Spot	-	
2	(225)	-		3/400	PUNCH LIGHT	-	
2	(221)	-		3/200	PUNCH LIGHT	-	
3	(227)	-		3/150	ALPHA Spot	-	
4	(229)	-		3/325	ALPHA Spot	-	
4	(220)	-		3/125	PUNCH LIGHT	-	
5	(219)	-		3/100	PUNCH LIGHT	-	
6	(226)	-		3/50	ALPHA Spot	-	
7	(218)	-		3/25	PUNCH LIGHT	-	

GRID SOUTH

Unit#	Chan	Dim	Color	Addr	Instrument Type	Load	Gobo
1	(217)	-		3/1	PUNCH LIGHT	-	
5	(222)	-		3/275	PUNCH LIGHT	-	
6	(223)	-		3/300	PUNCH LIGHT	-	
7	(224)	-		3/375	PUNCH LIGHT	-	

SOUTH NEAR

Unit#	Chan	Dim	Color	Addr	Instrument Type	Load	Gobo
3	(208)	-		8/210	ROGUE 1	-	-
4	(207)	-		8/180	ROGUE 1	-	-
7	(206)	-		8/150	ROGUE 1	-	-
8	(205)	-		8/120	ROGUE 1	-	-
9	(38)	12	L202+R132		S4 36°	-	-
9	(18)	35	L202+R132		S4 36°	-	-
9	(17)	34	L202+R132		S4 36°	-	-
9	(16)	33	L202+R132		S4 36°	-	-
9	(15)	32	L202+R132		S4 36°	-	-
9	(37)	62	L202+R132		S4 36°	-	-
9	(10)	63	L202+R132		S4 36°	-	-
9	(11)	64	L202+R132		S4 36°	-	-
9	(12)	65	L202+R132		S4 36°	-	-
9	(13)	66	L202+R132		S4 36°	-	-
9	(14)	31	L202+R132		S4 36°	-	-
11	(204)	-		8/90	ROGUE 1	-	-
12	(203)	-		8/60	ROGUE 1	-	-
15	(202)	-		8/30	ROGUE 1	-	-
16	(201)	-		8/1	ROGUE 1	-	-

NORTH FAR

Unit#	Chan	Dim	Color	Addr	Instrument Type	Load	Gobo
1	(58)	157	R132	1/80	S4 26° SEA	-	-
2	(106)	158	L763		MFL S4 PAR	-	-
3	(106)	158	L763		MFL S4 PAR	-	-
4	(106)	158	L763		MFL S4 PAR	-	-
5	(57)	159	R132	1/70	S4 26° SEA	-	-
6	(105)	160	L763		MFL S4 PAR	-	-
7	(105)	160	L763		MFL S4 PAR	-	-
8	(105)	160	L763		MFL S4 PAR	-	-
9	(56)	161	R132	1/60	S4 26° SEA	-	-
10	(104)	162	L763		MFL S4 PAR	-	-
11	(104)	162	L763		MFL S4 PAR	-	-
12	(104)	162	L763		MFL S4 PAR	-	-
13	(55)	108	R132	1/50	S4 26° SEA	-	-
14	(103)	107	L763		MFL S4 PAR	-	-
15	(103)	107	L763		MFL S4 PAR	-	-
16	(103)	107	L763		MFL S4 PAR	-	-
17	(54)	106	R132	1/40	S4 26° SEA	-	-
18	(102)	105	L763		MFL S4 PAR	-	-
19	(102)	105	L763		MFL S4 PAR	-	-
20	(102)	105	L763		MFL S4 PAR	-	-
21	(53)	104	R132	1/30	S4 26° SEA	-	-
22	(101)	103	L763		MFL S4 PAR	-	-
23	(101)	103	L763		MFL S4 PAR	-	-
24	(101)	103	L763		MFL S4 PAR	-	-
25	(52)	151	R132	1/20	S4 26° SEA	-	-
26	(100)	152	L763		MFL S4 PAR	-	-

NORTH FAR

Unit#	Chan	Dim	Color	Addr	Instrument Type	Load	Gobo
27	(100)	152	L763		MFL S4 PAR		-
28	(100)	152	L763		MFL S4 PAR		-
29	(51)	153	R132	1/10	S4 26° SEA		-
30	(99)	154	L763		MFL S4 PAR		-
31	(99)	154	L763		MFL S4 PAR		-
32	(99)	154	L763		MFL S4 PAR		-
33	(50)	155	R132	1/1	S4 26° SEA		-

TAIL DOWN S.W.

Unit#	Chan	Dim	Color	Addr	Instrument Type	Load	Gobo
1	(107)	61	R132	5/1	S4 36° SEA		G#635
2	(109)	138	R132	5/10	S4 36° SEA		-

TAIL DOWN N.W.

Unit#	Chan	Dim	Color	Addr	Instrument Type	Load	Gobo
1	(109)	156	R132	9/1	S4 36° SEA		-
2	(107)	114	R132	9/10	S4 36° SEA		G#635

TAIL DOWN N.E.

Unit#	Chan	Dim	Color	Addr	Instrument Type	Load	Gobo
1	(110)	181	R132	4/1	S4 36° SEA		-
2	(108)	182	R132	4/10	S4 36° SEA		G#635

TAIL DOWN S.E.

Unit#	Chan	Dim	Color	Addr	Instrument Type	Load	Gobo
1	(108)	169	R132	10/10	S4 36° SEA		G#635
2	(110)	170	R132	10/1	S4 36° SEA		-

SOUTH FAR

Unit#	Chan	Dim	Color	Addr	Instrument Type	Load	Gobo
1	(49)	127	R132	6/80	S4 26° SEA	-	-
2	(98)	128	L763		MFL S4 PAR	-	-
3	(98)	128	L763		MFL S4 PAR	-	-
4	(98)	128	L763		MFL S4 PAR	-	-
5	(48)	129	R132	6/70	S4 26° SEA	-	-
6	(97)	130	L763		MFL S4 PAR	-	-
7	(97)	130	L763		MFL S4 PAR	-	-
8	(97)	130	L763		MFL S4 PAR	-	-
9	(47)	132	R132	6/60	S4 26° SEA	-	-
10	(96)	132	L763		MFL S4 PAR	-	-
11	(96)	132	L763		MFL S4 PAR	-	-
12	(96)	132	L763		MFL S4 PAR	-	-
13	(46)	13	R132	6/50	S4 26° SEA	-	-
14	(95)	14	L763		MFL S4 PAR	-	-
15	(95)	14	L763		MFL S4 PAR	-	-
16	(95)	14	L763		MFL S4 PAR	-	-
17	(45)	15	R132	6/40	S4 26° SEA	-	-
18	(94)	16	L763		MFL S4 PAR	-	-
19	(94)	16	L763		MFL S4 PAR	-	-
20	(94)	16	L763		MFL S4 PAR	-	-
21	(44)	17	R132	6/30	S4 26° SEA	-	-
22	(93)	18	L763		MFL S4 PAR	-	-
23	(93)	18	L763		MFL S4 PAR	-	-
24	(93)	18	L763		MFL S4 PAR	-	-
25	(43)	133	R132	6/20	S4 26° SEA	-	-
26	(92)	134	L763		MFL S4 PAR	-	-

SOUTH FAR

Unit#	Chan	Dim	Color	Addr	Instrument Type	Load	Gobo
27	(92)	134	L763		MFL S4 PAR	-	
28	(92)	134	L763		MFL S4 PAR	-	
29	(42)	135	R132	6/10	S4 26° SEA	-	
30	(91)	136	L763		MFL S4 PAR	-	
31	(91)	136	L763		MFL S4 PAR	-	
32	(91)	136	L763		MFL S4 PAR	-	
33	(41)	137	R132	6/1	S4 26° SEA	-	

DOOR WEST

Unit#	Chan	Dim	Color	Addr	Instrument Type	Load	Gobo
1	(111)	175	R3204		S4 PAR MFL	-	
2	(112)	176	R3204		S4 PAR MFL	-	

SET

Unit#	Chan	Dim	Color	Addr	Instrument Type	Load	Gobo
1	(230)	173	-		-		-
1	(115)	174	-		TBD		-
2	(116)	97	-		TBD		-
3	(117)	98	-		TBD		-
4	(118)	99	-		TBD		-
5	(119)	100	-		TBD		-
6	(120)	101	-		TBD		-
7	(121)	102	-		TBD		-
8	(122)	95	-		TBD		-
9	(123)	96	-		TBD		-
10	(124)	115	-		TBD		-
11	(125)	116	-		TBD		-
12	(127)	117	-		TBD		-
13.1	(126)	118	-		TBD		-
13.2	(128)	119	-		TBD		-
14	(129)	120	-		TBD		-
15	(130)	92	-		TBD		-
16	(131)	91	-		TBD		-
17	(132)		-		TBD		-
18	(133)	19	-		TBD		-
19	(134)		-		TBD		-
20	(135)	20	-		TBD		-
21.1	(136)		-		TBD		-
21.2	(137)	24	-		TBD		-
22	(138)		-		TBD		-
23	(139)		-		TBD		-
24	(140)	21	-		TBD		-

SET

Unit#	Chan	Dim	Color	Addr	Instrument Type	Load	Gobo
25	(141)	23	-		TBD		-
26	(142)		-		TBD		-
27	(143)	22	-		TBD		-
28	(144)	122	-		TBD		-
29	(145)	121	-		TBD		-
36	(152)	93	-		9568.1.1.0.0		-
37	(153)	94	-		PAR 30 SPOT 3200K°		-

DOOR EAST

Unit#	Chan	Dim	Color	Addr	Instrument Type	Load	Gobo
1	(113)	183	R3204		S4 PAR MFL		-
2	(114)	184	R3204		S4 PAR MFL		-

NORTH MID

Unit#	Chan	Dim	Color	Addr	Instrument Type	Load	Gobo
4	(88)	50	L174		36° S4 750		G#:635
4	(89)	54	L174		36° S4 750		G#:635
4	(90)	166	L174		36° S4 750		G#:635
4	(87)	77	L174		36° S4 750		G#:635
4	(85)	83	L174		36° S4 750		G#:635
4	(84)	79	L174		36° S4 750		G#:635
4	(83)	148	L174		36° S4 750		G#:635
4	(86)	75	L174		36° S4 750		G#:635

14	(28)	145	L202+R132		S4 36°		-
14	(29)	149	L202+R132		S4 36°		-
14	(30)	80	L202+R132		S4 36°		-
14	(31)	84	L202+R132		S4 36°		-
14	(32)	76	L202+R132		S4 36°		-
14	(33)	49	L202+R132		S4 36°		-
14	(34)	53	L202+R132		S4 36°		-
14	(35)	165	L202+R132		S4 36°		-
14	(36)	168	L202+R132		S4 36°		-

17	(505)	73	-		50° Source Four		-
17	(505)	73	-		50° Source Four		-

20	(502)	81	R115		WFL S4 PAR		-
20	(503)	52	R115		WFL S4 PAR		-

23	(502)	146	R115		WFL S4 PAR		-
23	(503)	164	R115		WFL S4 PAR		-

NORTH MID

Unit#	Chan	Dim	Color	Addr	Instrument Type	Load	Gobo
24	(74)	167	CLR		S4 26° 750	-	
24	(71)	78	CLR		S4 26° 750	-	
24	(72)	51	CLR		S4 26° 750	-	
24	(73)	163	CLR		S4 26° 750	-	
24	(70)	74	CLR		S4 26° 750	-	
24	(69)	82	CLR		S4 26° 750	-	
24	(68)	150	CLR		S4 26° 750	-	
24	(67)	147	CLR		S4 26°	-	
<hr style="border-top: 1px dashed black;"/>							
26	(502)	146	R115		WFL S4 PAR	-	
26	(503)	164	R115		WFL S4 PAR	-	

SOUTH MID

Unit#	Chan	Dim	Color	Addr	Instrument Type	Load	Gobo
1	(9)	6	L202+R132		S4 36°	-	-
2	(501)	2	R115		WFL S4 PAR	-	-
3	(66)	5	L203		S4 26° 750	-	-
4	(82)	4	L174		36° S4 750	-	G#:635
5	(8)	3	L202+R132		S4 36°	-	-
6	(501)	2	R115		WFL S4 PAR	-	-
7	(65)	1	L203		S4 26° 750	-	-
8	(81)	12	L174		36° S4 750	-	G#:635
9	(7)	11	L202+R132		S4 36°	-	-
10	(501)	10	R115		WFL S4 PAR	-	-
11	(64)	9	L203		S4 26° 750	-	-
12	(80)	8	L174		36° S4 750	-	G#:635
13	(6)	7	L202+R132		S4 36°	-	-
14	(504)	37	-		50° Source Four	-	-
15	(63)	42	L203		S4 26° 750	-	-
16	(79)	41	L174		36° S4 750	-	G#:635
17	(5)	40	L202+R132		S4 36°	-	-
18	(78)	39	L174		36° S4 750	-	G#:635
19	(62)	38	L203		S4 26° 750	-	-
20	(504)	37	-		50° Source Four	-	-
21	(4)	48	L202+R132		S4 36°	-	-
22	(77)	47	L174		36° S4 750	-	G#:635
23	(61)	46	L203		S4 26° 750	-	-
24	(500)	45	R115		WFL S4 PAR	-	-
25	(3)	44	L202+R132		S4 36°	-	-
26	(76)	43	L174		36° S4 750	-	G#:635

SOUTH MID

Unit#	Chan	Dim	Color	Addr	Instrument Type	Load	Gobo
27	(60)	72	L203		S4 26° 750		-
28	(500)	68	R115		WFL S4 PAR		-
29	(2)	71	L202+R132		S4 36°		-
30	(75)	70	L174		36° S4 750		G#:635
31	(59)	69	L203		S4 26° 750		-
32	(500)	68	R115		WFL S4 PAR		-
33	(1)	67	L202+R132		S4 36°		-

	Breakout Type	Dimmer #	Purpose	Curcuit #	Soca A	Soca B	Soca C	Soca D	Stage Pin	Stage Pin	Stage Pin	Stage Pin	Stage Pin	Stage Pin	Stage Pin	
									Two-Fer	5'	10'	15'	25'	50'	100'	
									55	22	6	0	2	1	0	
Soca A	6' Staggered Stage Pin Breakout	1	S4 ERS	1	25'											
		2	S4 PAR	2												
		3	S4 ERS	3												
		4	S4 ERS	4												
		5	S4 ERS	5												
		6	S4 ERS	6												
Soca B	6' Staggered Stage Pin Breakout	7	S4 ERS	1	25'											
		8	S4 ERS	2												
		9	S4 ERS	3												
		10	S4 PAR	4												
		11	S4 ERS	5												
		12	S4 ERS	6												
Soca C	6' Staggered Stage Pin Breakout	13	Seachanger	1	10'											
		14	S4 PAR	2												
		15	Seachanger	3												
		16	S4 PAR	4												
		17	Seachanger	5												
		18	S4 PAR	6												
Soca D	6' Straight Stage Pin Breakout	19	PRATICAL	1												
		20	PRATICAL	2												
		21	PRATICAL	3												
		22	PRATICAL	4												
		23	PRATICAL	5												
		24	PRATICAL	6												
Soca E	6' Straight Stage Pin Breakout	25	PRATICAL	1												
		26	PRATICAL	2												
		27	PRATICAL	3												
		28	PRATICAL	4												
		29	PRATICAL	5												
		30	PRATICAL	6												
Soca F	6' Straight Stage Pin Breakout	31	S4 PAR	1	25'											
		32	S4 PAR	2												
		33	S4 PAR	3												
		34	S4 PAR	4												
		35	S4 PAR	5												
		36	S4 PAR	6												
Soca G	6' Staggered Stage Pin Breakout	37	S4 ERS	1	25'											
		38	S4 ERS	2												
		39	S4 ERS	3												
		40	S4 ERS	4												
		41	S4 ERS	5												
		42	S4 ERS	6												
Soca H	6' Staggered Stage Pin Breakout	43	S4 ERS	1	10'											
		44	S4 ERS	2												
		45	S4 PAR	3												
		46	S4 ERS	4												
		47	S4 ERS	5												
		48	S4 ERS	6												
Soca J	6' Staggered Stage Pin Breakout	49	S4 ERS	1												
		50	S4 ERS	2												
		51	S4 ERS	3												
		52	S4 PAR	4												
		53	S4 ERS	5												
		54	S4 ERS	6												
Soca K	6' Staggered Stage Pin Breakout	55	S4 ERS	1	25'											
		56	S4 ERS	2												
		57	S4 ERS	3												
		58	S4 ERS	4												
		59	S4 ERS	5												
		60	S4 ERS	6												

	Breakout Type	Dimmer #	Purpose	Curcuit #	Soca A	Soca B	Soca C	Soca D	Stage Pin	Stage Pin	Stage Pin	Stage Pin	Stage Pin	Stage Pin	Stage Pin
									Two-Fer	5'	10'	15'	25'	50'	100'
									55	22	6	0	2	1	0
Soca L	6' Staggered Stage Pin Breakout	61	S4 ERS	1	25'								1	1	
		62	S4 ERS	2							1				
		63	S4 ERS	3							1				
		64	S4 ERS	4							1				
		65	S4 ERS	5							1	1			
		66	S4 ERS	6							1	1			
Soca M	6' Staggered Stage Pin Breakout	67	S4 ERS	1	25'										
		68	S4 PAR	2						1	1	1			
		69	S4 ERS	3											
		70	S4 ERS	4											
		71	S4 ERS	5											
		72	S4 ERS	6											
Soca N	6' Staggered Stage Pin Breakout	73	S4 ERS	1	25'										
		74	S4 ERS	2											
		75	S4 ERS	3											
		76	S4 ERS	4											
		77	S4 ERS	5											
		78	S4 ERS	6											
Soca P	6' Staggered Stage Pin Breakout	79	S4 ERS	1	25'										
		80	S4 ERS	2											
		81	S4 PAR	3											
		82	S4 ERS	4											
		83	S4 ERS	5											
		84	S4 ERS	6											
Soca R	6' Straight Stage Pin Breakout	91	PRATICAL	1	25'										
		92	PRATICAL	2											
		93	PRATICAL	3											
		94	PRATICAL	4											
		95	PRATICAL	5											
		96	PRATICAL	6											
Soca S	6' Straight Stage Pin Breakout	97	PRATICAL	1	25'										
		98	PRATICAL	2											
		99	PRATICAL	3											
		100	PRATICAL	4											
		101	PRATICAL	5											
		102	PRATICAL	6											
Soca T	6' Straight Stage Pin Breakout	103	Seachanger	1	25'										
		104	S4 PAR	2											
		105	Seachanger	3											
		106	S4 PAR	4											
		107	Seachanger	5							1	1			
		108	S4 PAR	6							2	1	1		
Soca V	6' Straight Stage Pin Breakout	109	S4 ERS	1	25'										
		110	S4 ERS	2											
		111	S4 ERS	3											
		112	S4 ERS	4											
		113	S4 ERS	5							1	1			
		114	S4 ERS	6									1		
Soca W	6' Straight Stage Pin Breakout	115	PRATICAL	1	25'										
		116	PRATICAL	2											
		117	PRATICAL	3											
		118	PRATICAL	4											
		119	PRATICAL	5											
		120	PRATICAL	6											
Soca AA	6' Straight Stage Pin Breakout	121	PRATICAL	1	10'										
		122	PRATICAL	2											
		123	PRATICAL	3											
		124	PRATICAL	4											
		125	PRATICAL	5											
		126	PRATICAL	6											

	Breakout Type	Dimmer #	Purpose	Curcuit #	Soca A	Soca B	Soca C	Soca D	Stage Pin	Stage Pin	Stage Pin	Stage Pin	Stage Pin	Stage Pin	Stage Pin
									Two-Fer	5'	10'	15'	25'	50'	100'
									55	22	6	0	2	1	0
Soca BB	6' Staggered Stage Pin Breakout	127	Seachanger	1	25'				1						
		128	S4 PAR	2		2									
		129	Seachanger	3		1									
		130	S4 PAR	4		2									
		131	Seachanger	5		1	1								
		132	S4 PAR	6		2	1								
Soca CC	6' Staggered Stage Pin Breakout	133	Seachanger	1	25'				1						
		134	S4 PAR	2		2									
		135	Seachanger	3		1									
		136	S4 PAR	4		2									
		137	Seachanger	5		1	1								
		138	Seachanger	6		2	1								
Soca EE	6' Staggered Stage Pin Breakout	145	S4 ERS	1	25'										
		146	S4 PAR	2											
		147	S4 ERS	3											
		148	S4 ERS	4											
		149	S4 ERS	5											
		150	S4 ERS	6											
Soca FF	6' Straight Stage Pin Breakout	151	Seachanger	1	10'				1						
		152	S4 PAR	2		2									
		153	Seachanger	3		1									
		154	S4 PAR	4		2									
		155	Seachanger	5		1	1								
		156	Seachanger	6		1	1	1							
Soca GG	6' Straight Stage Pin Breakout	157	Seachanger	1	10'				1						
		158	S4 PAR	2		2									
		159	Seachanger	3		1									
		160	S4 PAR	4		2									
		161	Seachanger	5		1									
		162	S4 PAR	6		2									
Soca HH	6' Straight Stage Pin Breakout	163	S4 ERS	1	25'										
		164	S4 PAR	2											
		165	S4 ERS	3											
		166	S4 ERS	4											
		167	S4 ERS	5											
		168	S4 ERS	6											

Ch: (1)	Type: S4 36°		
	Adr:	-	
	Dm: 67	Clr: L202+R132	
	Pos: SOUTH MID		U#: 33

Ch: (2)	Type: S4 36°		
	Adr:	-	
	Dm: 71	Clr: L202+R132	
	Pos: SOUTH MID		U#: 29

Ch: (3)	Type: S4 36°		
	Adr:	-	
	Dm: 44	Clr: L202+R132	
	Pos: SOUTH MID		U#: 25

Ch: (4)	Type: S4 36°		
	Adr:	-	
	Dm: 48	Clr: L202+R132	
	Pos: SOUTH MID		U#: 21

Ch: (5)	Type: S4 36°		
	Adr:	-	
	Dm: 40	Clr: L202+R132	
	Pos: SOUTH MID		U#: 17

Ch: (6)	Type: S4 36°		
	Adr:	-	
	Dm: 7	Clr: L202+R132	
	Pos: SOUTH MID		U#: 13

Ch: (7)	Type: S4 36°		
	Adr:	-	
	Dm: 11	Clr: L202+R132	
	Pos: SOUTH MID		U#: 9

Ch: (8)	Type: S4 36°		
	Adr:	-	
	Dm: 3	Clr: L202+R132	
	Pos: SOUTH MID		U#: 5

Ch: (9)	Type: S4 36°		
	Adr:	-	
	Dm: 6	Clr: L202+R132	
	Pos: SOUTH MID		U#: 1

Ch: (10)	Type: S4 36°		
	Adr:	-	
	Dm: 63	Clr: L202+R132	
	Pos: SOUTH NEAR		U#: 9

Ch: (11)	Type: S4 36°		
	Adr:	-	
	Dm: 64	Clr: L202+R132	
	Pos: SOUTH NEAR		U#: 9

Ch: (12)	Type: S4 36°		
	Adr:	-	
	Dm: 65	Clr: L202+R132	
	Pos: SOUTH NEAR		U#: 9

Ch: (13)	Type: S4 36°		
	Adr:	-	
	Dm: 66	Clr: L202+R132	
	Pos: SOUTH NEAR		U#: 9

Ch: (14)	Type: S4 36°		
	Adr:	-	
	Dm: 31	Clr: L202+R132	
	Pos: SOUTH NEAR		U#: 9

Ch: (15)	Type: S4 36°		
	Adr:	-	
	Dm: 32	Clr: L202+R132	
	Pos: SOUTH NEAR		U#: 9

Ch: (16)	Type: S4 36°		
	Adr:	-	
	Dm: 33	Clr: L202+R132	
	Pos: SOUTH NEAR		U#: 9

Ch: (17)	Type: S4 36°		
	Adr:	-	
	Dm: 34	Clr: L202+R132	
	Pos: SOUTH NEAR		U#: 9

Ch: (18)	Type: S4 36°		
	Adr:	-	
	Dm: 35	Clr: L202+R132	
	Pos: SOUTH NEAR		U#: 9

Ch: (19)	Type: S4 36°		
	Adr:	-	
	Dm: 36	Clr: L202+R132	
	Pos: NORTH NEAR		U#: 9

Ch: (20)	Type: S4 36°		
	Adr:	-	
	Dm: 111	Clr: L202+R132	
	Pos: NORTH NEAR		U#: 9

Ch: (21)	Type: S4 36°		
	Adr:	-	
	Dm: 110	Clr: L202+R132	
	Pos: NORTH NEAR		U#: 9

Ch: (22)	Type: S4 36°		
	Adr:	-	
	Dm: 109	Clr: L202+R132	
	Pos: NORTH NEAR		U#: 9

Ch: (23)	Type: S4 36°		
	Adr:	-	
	Dm: 55	Clr: L202+R132	
	Pos: NORTH NEAR		U#: 9

Ch: (24)	Type: S4 36°		
	Adr:	-	
	Dm: 56	Clr: L202+R132	
	Pos: NORTH NEAR		U#: 9

Ch: (25)	Type: S4 36°		
	Adr:	-	
	Dm: 57	Clr: L202+R132	
	Pos: NORTH NEAR		U#: 9

Ch: (26)	Type: S4 36°		
	Adr:	-	
	Dm: 58	Clr: L202+R132	
	Pos: NORTH NEAR		U#: 9

Ch: (27)	Type: S4 36°		
	Adr:	-	
	Dm: 59	Clr: L202+R132	
	Pos: NORTH NEAR		U#: 9

Ch: (28)	Type: S4 36°		
	Adr:	-	
	Dm: 145	Clr: L202+R132	
	Pos: NORTH MID		U#: 14

Ch: (29)	Type: S4 36°		
	Adr:	-	
	Dm: 149	Clr: L202+R132	
	Pos: NORTH MID		U#: 14

Ch: (30)	Type: S4 36°		
	Adr:	-	
	Dm: 80	Clr: L202+R132	
	Pos: NORTH MID		U#: 14

Ch: (31)	Type: S4 36°		
	Adr:	-	
	Dm: 84	Clr: L202+R132	
	Pos: NORTH MID		U#: 14

Ch: (32)	Type: S4 36°		
	Adr:	-	
	Dm: 76	Clr: L202+R132	
	Pos: NORTH MID		U#: 14

Ch: (33)	Type: S4 36°		
	Adr:	-	
	Dm: 49	Clr: L202+R132	
	Pos: NORTH MID		U#: 14

Ch: (34)	Type: S4 36°		
	Adr:	-	
	Dm: 53	Clr: L202+R132	
	Pos: NORTH MID		U#: 14

Ch: (35)	Type: S4 36°		
	Adr:	-	
	Dm: 165	Clr: L202+R132	
	Pos: NORTH MID		U#: 14

Ch: (36)	Type: S4 36°		
	Adr:	-	
	Dm: 168	Clr: L202+R132	
	Pos: NORTH MID		U#: 14

Ch: (37)	Type: S4 36°		
	Adr:	-	
	Dm: 62	Clr: L202+R132	
	Pos: SOUTH NEAR		U#: 9

Ch: (38)	Type: S4 36°		
	Adr:	-	
	Dm: 12	Clr: L202+R132	
	Pos: SOUTH NEAR		U#: 9

Ch: (39)	Type: S4 36°		
	Adr:	-	
	Dm: 113	Clr: L202+R132	
	Pos: NORTH NEAR		U#: 9

Ch: (40)	Type: S4 36°		
	Adr:	-	
	Dm: 60	Clr: L202+R132	
	Pos: NORTH NEAR		U#: 9

Ch: (41)	Type: S4 26° SEA		
	Adr: 6/1	ND 204	
	Dm: 137	Clr: R132	
	Pos: SOUTH FAR		U#: 33

Ch: (42)	Type: S4 26° SEA		
	Adr: 6/10	ND 204	
	Dm: 135	Clr: R132	
	Pos: SOUTH FAR		U#: 29

Ch: (43)	Type: S4 26° SEA		
	Adr: 6/20	ND 204	
	Dm: 133	Clr: R132	
	Pos: SOUTH FAR		U#: 25

Ch: (44)	Type: S4 26° SEA		
	Adr: 6/30	ND 204	
	Dm: 17	Clr: R132	
	Pos: SOUTH FAR		U#: 21

Ch: (45)	Type: S4 26° SEA		
	Adr: 6/40	ND 204	
	Dm: 15	Clr: R132	
	Pos: SOUTH FAR		U#: 17

Ch: (46)	Type: S4 26° SEA		
	Adr: 6/50	ND 204	
	Dm: 13	Clr: R132	
	Pos: SOUTH FAR		U#: 13

Ch: (47)	Type: S4 26° SEA		
	Adr: 6/60	ND 204	
	Dm: 132	Clr: R132	
	Pos: SOUTH FAR		U#: 9

Ch: (48)	Type: S4 26° SEA		
	Adr: 6/70	ND 204	
	Dm: 129	Clr: R132	
	Pos: SOUTH FAR		U#: 5

Ch: (49)	Type: S4 26° SEA		
	Adr: 6/80	ND 204	
	Dm: 127	Clr: R132	
	Pos: SOUTH FAR		U#: 1

Ch: (50)	Type: S4 26° SEA		
	Adr: 1/1	ND 206	
	Dm: 155	Clr: R132	
	Pos: NORTH FAR		U#: 33

Ch: (51)	Type: S4 26° SEA		
	Adr: 1/10	ND 206	
	Dm: 153	Clr: R132	
	Pos: NORTH FAR		U#: 29

Ch: (52)	Type: S4 26° SEA		
	Adr: 1/20	ND 206	
	Dm: 151	Clr: R132	
	Pos: NORTH FAR		U#: 25

Ch: (53)	Type: S4 26° SEA		
	Adr: 1/30	ND 206	
	Dm: 104	Clr: R132	
	Pos: NORTH FAR		U#: 21

Ch: (54)	Type: S4 26° SEA		
	Adr: 1/40	ND 206	
	Dm: 106	Clr: R132	
	Pos: NORTH FAR		U#: 17

Ch: (55)	Type: S4 26° SEA		
	Adr: 1/50	ND 206	
	Dm: 108	Clr: R132	
	Pos: NORTH FAR		U#: 13

Ch: (56)	Type: S4 26° SEA		
	Adr: 1/60	ND 206	
	Dm: 161	Clr: R132	
	Pos: NORTH FAR		U#: 9

Ch: (57)	Type: S4 26° SEA		
	Adr: 1/70	ND 206	
	Dm: 159	Clr: R132	
	Pos: NORTH FAR		U#: 5

Ch: (58)	Type: S4 26° SEA		
	Adr: 1/80	ND 206	
	Dm: 157	Clr: R132	
	Pos: NORTH FAR		U#: 1

Ch: (59)	Type: S4 26° 750		
	Adr:	-	
	Dm: 69	Clr: L203	
	Pos: SOUTH MID		U#: 31

Ch: (60)	Type: S4 26° 750		
	Adr:	-	
	Dm: 72	Clr: L203	
	Pos: SOUTH MID		U#: 27

Ch: (61)	Type: S4 26° 750		
	Adr:	-	
	Dm: 46	Clr: L203	
	Pos: SOUTH MID		U#: 23

Ch: (62)	Type: S4 26° 750		
	Adr:	-	
	Dm: 38	Clr: L203	
	Pos: SOUTH MID		U#: 19

Ch: (63)	Type: S4 26° 750		
	Adr:	-	
	Dm: 42	Clr: L203	
	Pos: SOUTH MID		U#: 15

Ch: (64)	Type: S4 26° 750		
	Adr:	-	
	Dm: 9	Clr: L203	
	Pos: SOUTH MID		U#: 11

Ch: (65)	Type: S4 26° 750		
	Adr:	-	
	Dm: 1	Clr: L203	
	Pos: SOUTH MID		U#: 7

Ch: (66)	Type: S4 26° 750		
	Adr:	-	
	Dm: 5	Clr: L203	
	Pos: SOUTH MID		U#: 3

Ch: (67)	Type: S4 26°		
	Adr:	-	
	Dm: 147	Clr: CLR	
	Pos: NORTH MID		U#: 24

Ch: (68)	Type: S4 26° 750		
	Adr:	-	
	Dm: 150	Clr: CLR	
	Pos: NORTH MID		U#: 24

Ch: (69)	Type: S4 26° 750		
	Adr:	-	
	Dm: 82	Clr: CLR	
	Pos: NORTH MID		U#: 24

Ch: (70)	Type: S4 26° 750		
	Adr:	-	
	Dm: 74	Clr: CLR	
	Pos: NORTH MID		U#: 24

Ch: (71)	Type: S4 26° 750		
	Adr:	-	
	Dm: 78	Clr: CLR	
	Pos: NORTH MID		U#: 24

Ch: (72)	Type: S4 26° 750		
	Adr:	-	
	Dm: 51	Clr: CLR	
	Pos: NORTH MID		U#: 24

Ch: (73)	Type: S4 26° 750		
	Adr:	-	
	Dm: 163	Clr: CLR	
	Pos: NORTH MID		U#: 24

Ch: (74)	Type: S4 26° 750		
	Adr:	-	
	Dm: 167	Clr: CLR	
	Pos: NORTH MID		U#: 24

Ch: (75)	Type: 36° S4 750		
	Adr:	-	
	Dm: 70	Clr: L174	
	Pos: SOUTH MID		U#: 30

Ch: (76)	Type: 36° S4 750		
	Adr:	-	
	Dm: 43	Clr: L174	
	Pos: SOUTH MID		U#: 26

Ch: (77)	Type: 36° S4 750		
	Adr:	-	
	Dm: 47	Clr: L174	
	Pos: SOUTH MID		U#: 22

Ch: (78)	Type: 36° S4 750		
	Adr:	-	
	Dm: 39	Clr: L174	
	Pos: SOUTH MID		U#: 18

Ch: (79)	Type: 36° S4 750		
	Adr:	-	
	Dm: 41	Clr: L174	
	Pos: SOUTH MID		U#: 16

Ch: (80)	Type: 36° S4 750		
	Adr:	-	
	Dm: 8	Clr: L174	
	Pos: SOUTH MID		U#: 12

Ch: (81)	Type: 36° S4 750		
	Adr:	-	
	Dm: 12	Clr: L174	
	Pos: SOUTH MID		U#: 8

Ch: (82)	Type: 36° S4 750		
	Adr:	-	
	Dm: 4	Clr: L174	
	Pos: SOUTH MID		U#: 4

Ch: (83)	Type: 36° S4 750		
	Adr:	-	
	Dm: 148	Clr: L174	
	Pos: NORTH MID		U#: 4

Ch: (84)	Type: 36° S4 750		
	Adr:	-	
	Dm: 79	Clr: L174	
	Pos: NORTH MID		U#: 4

Ch: (85)	Type: 36° S4 750		
	Adr:	-	
	Dm: 83	Clr: L174	
	Pos: NORTH MID		U#: 4

Ch: (86)	Type: 36° S4 750		
	Adr:	-	
	Dm: 75	Clr: L174	
	Pos: NORTH MID		U#: 4

Ch: (87)	Type: 36° S4 750		
	Adr:	-	
	Dm: 77	Clr: L174	
	Pos: NORTH MID		U#: 4

Ch: (88)	Type: 36° S4 750		
	Adr:	-	
	Dm: 50	Clr: L174	
	Pos: NORTH MID		U#: 4

Ch: (89)	Type: 36° S4 750		
	Adr:	-	
	Dm: 54	Clr: L174	
	Pos: NORTH MID		U#: 4

Ch: (90)	Type: 36° S4 750		
	Adr:	-	
	Dm: 166	Clr: L174	
	Pos: NORTH MID		U#: 4

Ch: (91)	Type: MFL S4 PAR		
	Adr:	-	
	Dm: 136	Clr: L763	
	Pos: SOUTH FAR		U#: 30

Ch: (91)	Type: MFL S4 PAR		
	Adr:	-	
	Dm: 136	Clr: L763	
	Pos: SOUTH FAR		U#: 31

Ch: (91)	Type: MFL S4 PAR		
	Adr:	-	
	Dm: 136	Clr: L763	
	Pos: SOUTH FAR		U#: 32

Ch: (92)	Type: MFL S4 PAR		
	Adr:	-	
	Dm: 134	Clr: L763	
	Pos: SOUTH FAR		U#: 26

Ch: (92)	Type: MFL S4 PAR		
	Adr:	-	
	Dm: 134	Clr: L763	
	Pos: SOUTH FAR		U#: 27

Ch: (92)	Type: MFL S4 PAR		
	Adr:	-	
	Dm: 134	Clr: L763	
	Pos: SOUTH FAR		U#: 28

Ch: (93)	Type: MFL S4 PAR		
	Adr:	-	
	Dm: 18	Clr: L763	
	Pos: SOUTH FAR		U#: 22

Ch: (93)	Type: MFL S4 PAR		
	Adr:	-	
	Dm: 18	Clr: L763	
	Pos: SOUTH FAR		U#: 23

Ch: (93)	Type: MFL S4 PAR		
	Adr:	-	
	Dm: 18	Clr: L763	
	Pos: SOUTH FAR		U#: 24

Ch: (94)	Type: MFL S4 PAR		
	Adr:	-	
	Dm: 16	Clr: L763	
	Pos: SOUTH FAR		U#: 18

Ch: (94)	Type: MFL S4 PAR		
	Adr:	-	
	Dm: 16	Clr: L763	
	Pos: SOUTH FAR		U#: 19

Ch: (94)	Type: MFL S4 PAR		
	Adr:	-	
	Dm: 16	Clr: L763	
	Pos: SOUTH FAR		U#: 20

Ch: (95)	Type: MFL S4 PAR		
	Adr:	-	
	Dm: 14	Clr: L763	
	Pos: SOUTH FAR		U#: 14

Ch: (95)	Type: MFL S4 PAR		
	Adr:	-	
	Dm: 14	Clr: L763	
	Pos: SOUTH FAR		U#: 15

Ch: (95)	Type: MFL S4 PAR		
	Adr:	-	
	Dm: 14	Clr: L763	
	Pos: SOUTH FAR		U#: 16

Ch: (96)	Type: MFL S4 PAR		
	Adr:	-	
	Dm: 132	Clr: L763	
	Pos: SOUTH FAR		U#: 10

Ch: (96)	Type: MFL S4 PAR		
	Adr:	-	
	Dm: 132	Clr: L763	
	Pos: SOUTH FAR		U#: 11

Ch: (96)	Type: MFL S4 PAR		
	Adr:	-	
	Dm: 132	Clr: L763	
	Pos: SOUTH FAR		U#: 12

Ch: (97)	Type: MFL S4 PAR		
	Adr:	-	
	Dm: 130	Clr: L763	
	Pos: SOUTH FAR		U#: 6

Ch: (97)	Type: MFL S4 PAR		
	Adr:	-	
	Dm: 130	Clr: L763	
	Pos: SOUTH FAR		U#: 7

Ch: (97)	Type: MFL S4 PAR		
	Adr:	-	
	Dm: 130	Clr: L763	
	Pos: SOUTH FAR		U#: 8

Ch: (98)	Type: MFL S4 PAR		
	Adr:	-	
	Dm: 128	Clr: L763	
	Pos: SOUTH FAR		U#: 2

Ch: (98)	Type: MFL S4 PAR		
	Adr:	-	
	Dm: 128	Clr: L763	
	Pos: SOUTH FAR		U#: 3

Ch: (98)	Type: MFL S4 PAR		
	Adr:	-	
	Dm: 128	Clr: L763	
	Pos: SOUTH FAR		U#: 4

Ch: (99)	Type: MFL S4 PAR		
	Adr:	-	
	Dm: 154	Clr: L763	
	Pos: NORTH FAR		U#: 30

Ch: (99)	Type: MFL S4 PAR		
	Adr:	-	
	Dm: 154	Clr: L763	
	Pos: NORTH FAR		U#: 31

Ch: (99)	Type: MFL S4 PAR		
	Adr:	-	
	Dm: 154	Clr: L763	
	Pos: NORTH FAR		U#: 32

Ch: (100)	Type: MFL S4 PAR		
	Adr:	-	
	Dm: 152	Clr: L763	
	Pos: NORTH FAR		U#: 26

Ch: (100)	Type: MFL S4 PAR		
	Adr:	-	
	Dm: 152	Clr: L763	
	Pos: NORTH FAR		U#: 27

Ch: (100)	Type: MFL S4 PAR		
	Adr:	-	
	Dm: 152	Clr: L763	
	Pos: NORTH FAR		U#: 28

Ch: (101)	Type: MFL S4 PAR		
	Adr:	-	
	Dm: 103	Clr: L763	
	Pos: NORTH FAR		U#: 22

Ch: (101)	Type: MFL S4 PAR		
	Adr:	-	
	Dm: 103	Clr: L763	
	Pos: NORTH FAR		U#: 23

Ch: (101)	Type: MFL S4 PAR		
	Adr:	-	
	Dm: 103	Clr: L763	
	Pos: NORTH FAR		U#: 24

Ch: (102)	Type: MFL S4 PAR		
	Adr:	-	
	Dm: 105	Clr: L763	
	Pos: NORTH FAR		U#: 18

Ch: (102)	Type: MFL S4 PAR		
	Adr:	-	
	Dm: 105	Clr: L763	
	Pos: NORTH FAR		U#: 19

Ch: (102)	Type: MFL S4 PAR		
	Adr:	-	
	Dm: 105	Clr: L763	
	Pos: NORTH FAR		U#: 20

Ch: (103)	Type: MFL S4 PAR		
	Adr:	-	
	Dm: 107	Clr: L763	
	Pos: NORTH FAR		U#: 14

Ch: (103)	Type: MFL S4 PAR		
	Adr:	-	
	Dm: 107	Clr: L763	
	Pos: NORTH FAR		U#: 15

Ch: (103)	Type: MFL S4 PAR		
	Adr:	-	
	Dm: 107	Clr: L763	
	Pos: NORTH FAR		U#: 16

Ch: (104)	Type: MFL S4 PAR		
	Adr:	-	
	Dm: 162	Clr: L763	
	Pos: NORTH FAR		U#: 10

Ch: (104)	Type: MFL S4 PAR		
	Adr:	-	
	Dm: 162	Clr: L763	
	Pos: NORTH FAR		U#: 11

Ch: (104)	Type: MFL S4 PAR		
	Adr:	-	
	Dm: 162	Clr: L763	
	Pos: NORTH FAR		U#: 12

Ch: (105)	Type: MFL S4 PAR		
	Adr:	-	
	Dm: 160	Clr: L763	
	Pos: NORTH FAR		U#: 6

Ch: (105)	Type: MFL S4 PAR		
	Adr:	-	
	Dm: 160	Clr: L763	
	Pos: NORTH FAR		U#: 7

Ch: (105)	Type: MFL S4 PAR		
	Adr:	-	
	Dm: 160	Clr: L763	
	Pos: NORTH FAR		U#: 8

Ch: (106)	Type: MFL S4 PAR		
	Adr:	-	
	Dm: 158	Clr: L763	
	Pos: NORTH FAR		U#: 2

Ch: (106)	Type: MFL S4 PAR		
	Adr:	-	
	Dm: 158	Clr: L763	
	Pos: NORTH FAR		U#: 3

Ch: (106)	Type: MFL S4 PAR		
	Adr:	-	
	Dm: 158	Clr: L763	
	Pos: NORTH FAR		U#: 4

Ch: (107)	Type: S4 36° SEA		
	Adr: 5/1	ND 208	
	Dm: 61	Clr: R132	
	Pos: TAIL DOWN S.W.		U#: 1

Ch: (107)	Type: S4 36° SEA		
	Adr: 9/10	ND 205	
	Dm: 114	Clr: R132	
	Pos: TAIL DOWN N.W.		U#: 2

Ch: (108)	Type: S4 36° SEA		
	Adr: 4/10	ND 210	
	Dm: 182	Clr: R132	
	Pos: TAIL DOWN N.E.		U#: 2

Ch: (108)	Type: S4 36° SEA		
	Adr: 10/10	ND 207	
	Dm: 169	Clr: R132	
	Pos: TAIL DOWN S.E.		U#: 1

Ch: (109)	Type: S4 36° SEA		
	Adr: 5/10	ND 208	
	Dm: 138	Clr: R132	
	Pos: TAIL DOWN S.W.		U#: 2

Ch: (109)	Type: S4 36° SEA		
	Adr: 9/1	ND 205	
	Dm: 156	Clr: R132	
	Pos: TAIL DOWN N.W.		U#: 1

Ch: (110)	Type: S4 36° SEA		
	Adr: 4/1	ND 210	
	Dm: 181	Clr: R132	
	Pos: TAIL DOWN N.E.		U#: 1

Ch: (110)	Type: S4 36° SEA		
	Adr: 10/1	ND 207	
	Dm: 170	Clr: R132	
	Pos: TAIL DOWN S.E.		U#: 2

Ch: (111)	Type: S4 PAR MFL		
	Adr:	-	
	Dm: 175	Clr: R3204	
	Pos: DOOR WEST		U#: 1

Ch: (112)	Type: S4 PAR MFL		
	Adr:	-	
	Dm: 176	Clr: R3204	
	Pos: DOOR WEST		U#: 2

Ch: (113)	Type: S4 PAR MFL		
	Adr:	-	
	Dm: 183	Clr: R3204	
	Pos: DOOR EAST		U#: 1

Ch: (114)	Type: S4 PAR MFL		
	Adr:	-	
	Dm: 184	Clr: R3204	
	Pos: DOOR EAST		U#: 2

Ch: (115)	Type: TBD		
	Adr:	-	
	Dm: 174	Clr: -	
	Pos: SET		U#: 1

Ch: (116)	Type: TBD		
	Adr:	-	
	Dm: 97	Clr: -	
	Pos: SET		U#: 2

Ch: (117)	Type: TBD		
	Adr:	-	
	Dm: 98	Clr: -	
	Pos: SET		U#: 3

Ch: (118)	Type: TBD		
	Adr:	-	
	Dm: 99	Clr: -	
	Pos: SET		U#: 4

Ch: (119)	Type: TBD		
	Adr:	-	
	Dm: 100	Clr: -	
	Pos: SET		U#: 5

Ch: (120)	Type: TBD		
	Adr:	-	
	Dm: 101	Clr: -	
	Pos: SET		U#: 6

Ch: (121)	Type: TBD		
	Adr:	-	
	Dm: 102	Clr: -	
	Pos: SET		U#: 7

Ch: (122)	Type: TBD		
	Adr:	-	
	Dm: 95	Clr: -	
	Pos: SET		U#: 8

Ch: (123)	Type: TBD		
	Adr:	-	
	Dm: 96	Clr: -	
	Pos: SET		U#: 9

Ch: (124)	Type: TBD		
	Adr:	-	
	Dm: 115	Clr: -	
	Pos: SET		U#: 10

Ch: (125)	Type: TBD		
	Adr:	-	
	Dm: 116	Clr: -	
	Pos: SET		U#: 11

Ch: (126)	Type: TBD		
	Adr:	-	
	Dm: 118	Clr: -	
	Pos: SET		U#: 13.1

Ch: (127)	Type: TBD		
	Adr:	-	
	Dm: 117	Clr: -	
	Pos: SET		U#: 12

Ch: (128)	Type: TBD		
	Adr:	-	
	Dm: 119	Clr: -	
	Pos: SET		U#: 13.2

Ch: (129)	Type: TBD		
	Adr:	-	
	Dm: 120	Clr: -	
	Pos: SET		U#: 14

Ch: (130)	Type: TBD		
	Adr:	-	
	Dm: 92	Clr: -	
	Pos: SET		U#: 15

Ch: (131)	Type: TBD		
	Adr:	-	
	Dm: 91	Clr: -	
	Pos: SET		U#: 16

Ch: (132)	Type: TBD		
	Adr:	-	
	Dm:	Clr: -	
	Pos: SET		U#: 17

Ch: (133)	Type: TBD		
	Adr:	-	
	Dm: 19	Clr: -	
	Pos: SET		U#: 18

Ch: (134)	Type: TBD		
	Adr:	-	
	Dm:	Clr: -	
	Pos: SET		U#: 19

Ch: (135)	Type: TBD		
	Adr:	-	
	Dm: 20	Clr: -	
	Pos: SET		U#: 20

Ch: (136)	Type: TBD		
	Adr:	-	
	Dm:	Clr: -	
	Pos: SET		U#: 21.1

Ch: (137)	Type: TBD		
	Adr:	-	
	Dm: 24	Clr: -	
	Pos: SET		U#: 21.2

Ch: (138)	Type: TBD		
	Adr:	-	
	Dm:	Clr: -	
	Pos: SET		U#: 22

Ch: (139)	Type: TBD		
	Adr:	-	
	Dm:	Clr: -	
	Pos: SET		U#: 23

Ch: (140)	Type: TBD		
	Adr:	-	
	Dm: 21	Clr: -	
	Pos: SET		U#: 24

Ch: (141)	Type: TBD		
	Adr:	-	
	Dm: 23	Clr: -	
	Pos: SET		U#: 25

Ch: (142)	Type: TBD		
	Adr:	-	
	Dm:	Clr: -	
	Pos: SET		U#: 26

Ch: (143)	Type: TBD		
	Adr:	-	
	Dm: 22	Clr: -	
	Pos: SET		U#: 27

Ch: (144)	Type: TBD		
	Adr:	-	
	Dm: 122	Clr: -	
	Pos: SET		U#: 28

Ch: (145)	Type: TBD		
	Adr:	-	
	Dm: 121	Clr: -	
	Pos: SET		U#: 29

Ch: (152)	Type: 9568.1.1.0.0		
	Adr:	-	
	Dm: 93	Clr: -	
	Pos: SET		U#: 36

Ch: (153)	Type: PAR 30 SPOT 3200K°		
	Adr:	-	
	Dm: 94	Clr: -	
	Pos: SET		U#: 37

Ch: (201)	Type: ROGUE 1		
	Adr: 8/1	ND 216	
	Dm:	Clr: -	
	Pos: SOUTH NEAR		U#: 16

Ch: (202)	Type: ROGUE 1		
	Adr: 8/30	ND 216	
	Dm:	Clr: -	
	Pos: SOUTH NEAR		U#: 15

Ch: (203)	Type: ROGUE 1		
	Adr: 8/60	ND 216	
	Dm:	Clr: -	
	Pos: SOUTH NEAR		U#: 12

Ch: (204)	Type: ROGUE 1		
	Adr: 8/90	ND 216	
	Dm:	Clr: -	
	Pos: SOUTH NEAR		U#: 11

Ch: (205)	Type: ROGUE 1		
	Adr: 8/120	ND 216	
	Dm:	Clr: -	
	Pos: SOUTH NEAR		U#: 8

Ch: (206)	Type: ROGUE 1		
	Adr: 8/150	ND 216	
	Dm:	Clr: -	
	Pos: SOUTH NEAR		U#: 7

Ch: (207)	Type: ROGUE 1		
	Adr: 8/180	ND 216	
	Dm:	Clr: -	
	Pos: SOUTH NEAR		U#: 4

Ch: (208)	Type: ROGUE 1		
	Adr: 8/210	ND 216	
	Dm:	Clr: -	
	Pos: SOUTH NEAR		U#: 3

Ch: (209)	Type: ROGUE 1		
	Adr: 2/1	ND 202	
	Dm:	Clr: -	
	Pos: NORTH NEAR		U#: 16

Ch: (210)	Type: ROGUE 1		
	Adr: 2/30	ND 202	
	Dm:	Clr: -	
	Pos: NORTH NEAR		U#: 15

Ch: (211)	Type: ROGUE 1		
	Adr: 2/60	ND 202	
	Dm:	Clr: -	
	Pos: NORTH NEAR		U#: 12

Ch: (212)	Type: ROGUE 1		
	Adr: 2/90	ND 202	
	Dm:	Clr: -	
	Pos: NORTH NEAR		U#: 11

Ch: (213)	Type: ROGUE 1		
	Adr: 2/120	ND 202	
	Dm:	Clr: -	
	Pos: NORTH NEAR		U#: 8

Ch: (214)	Type: ROGUE 1		
	Adr: 2/150	ND 202	
	Dm:	Clr: -	
	Pos: NORTH NEAR		U#: 7

Ch: (215)	Type: ROGUE 1		
	Adr: 2/180	ND 202	
	Dm:	Clr: -	
	Pos: NORTH NEAR		U#: 4

Ch: (216)	Type: ROGUE 1		
	Adr: 2/210	ND 202	
	Dm:	Clr: -	
	Pos: NORTH NEAR		U#: 3

Ch: (217)	Type: PUNCH LIGHT		
	Adr: 3/1	ND 218	
	Dm:	Clr: -	
	Pos: GRID SOUTH		U#: 1

Ch: (218)	Type: PUNCH LIGHT		
	Adr: 3/25	ND 218	
	Dm:	Clr: -	
	Pos: GRID CENTER		U#: 7

Ch: (219)	Type: PUNCH LIGHT		
	Adr: 3/100	ND 218	
	Dm:	Clr: -	
	Pos: GRID CENTER		U#: 5

Ch: (220)	Type: PUNCH LIGHT		
	Adr: 3/125	ND 218	
	Dm:	Clr: -	
	Pos: GRID CENTER		U#: 4

Ch: (221)	Type: PUNCH LIGHT		
	Adr: 3/200	ND 218	
	Dm:	Clr: -	
	Pos: GRID CENTER		U#: 2

Ch: (222)	Type: PUNCH LIGHT		
	Adr: 3/275	ND 218	
	Dm:	Clr: -	
	Pos: GRID SOUTH		U#: 5

Ch: (223)	Type: PUNCH LIGHT		
	Adr: 3/300	ND 218	
	Dm:	Clr: -	
	Pos: GRID SOUTH		U#: 6

Ch: (224)	Type: PUNCH LIGHT		
	Adr: 3/375	ND 218	
	Dm:	Clr: -	
	Pos: GRID SOUTH		U#: 7

Ch: (225)	Type: PUNCH LIGHT		
	Adr: 3/400	ND 218	
	Dm:	Clr: -	
	Pos: GRID CENTER		U#: 2

Ch: (226)	Type: ALPHA Spot		
	Adr: 3/50	ND 220	
	Dm:	Clr: -	
	Pos: GRID CENTER		U#: 6

Ch: (227)	Type: ALPHA Spot		
	Adr: 3/150	ND 220	
	Dm:	Clr: -	
	Pos: GRID CENTER		U#: 3

Ch: (228)	Type: ALPHA Spot	
	Adr: 3/225	ND 215
	Dm:	Clr: -
	Pos: GRID CENTER	U#: 1

Ch: (229)	Type: ALPHA Spot	
	Adr: 3/325	ND 210
	Dm:	Clr: -
	Pos: GRID CENTER	U#: 4

Ch: (230)	Type: -	
	Adr:	-
	Dm: 173	Clr: -
	Pos: SET	U#: 1

Ch: (500)	Type: WFL S4 PAR	
	Adr:	-
	Dm: 45	Clr: R115
	Pos: SOUTH MID	U#: 24

Ch: (500)	Type: WFL S4 PAR	
	Adr:	-
	Dm: 68	Clr: R115
	Pos: SOUTH MID	U#: 28

Ch: (500)	Type: WFL S4 PAR	
	Adr:	-
	Dm: 68	Clr: R115
	Pos: SOUTH MID	U#: 32

Ch: (501)	Type: WFL S4 PAR	
	Adr:	-
	Dm: 2	Clr: R115
	Pos: SOUTH MID	U#: 2

Ch: (501)	Type: WFL S4 PAR	
	Adr:	-
	Dm: 2	Clr: R115
	Pos: SOUTH MID	U#: 6

Ch: (501)	Type: WFL S4 PAR	
	Adr:	-
	Dm: 10	Clr: R115
	Pos: SOUTH MID	U#: 10

Ch: (502)	Type: WFL S4 PAR	
	Adr:	-
	Dm: 81	Clr: R115
	Pos: NORTH MID	U#: 20

Ch: (502)	Type: WFL S4 PAR	
	Adr:	-
	Dm: 146	Clr: R115
	Pos: NORTH MID	U#: 23

Ch: (502)	Type: WFL S4 PAR	
	Adr:	-
	Dm: 146	Clr: R115
	Pos: NORTH MID	U#: 26

Ch: (503)	Type: WFL S4 PAR	
	Adr:	-
	Dm: 52	Clr: R115
	Pos: NORTH MID	U#: 20

Ch: (503)	Type: WFL S4 PAR	
	Adr:	-
	Dm: 164	Clr: R115
	Pos: NORTH MID	U#: 23

Ch: (503)	Type: WFL S4 PAR	
	Adr:	-
	Dm: 164	Clr: R115
	Pos: NORTH MID	U#: 26

Ch: (504)	Type: 50° Source Four	
	Adr:	-
	Dm: 37	Clr: -
	Pos: SOUTH MID	U#: 14

Ch: (504)	Type: 50° Source Four	
	Adr:	-
	Dm: 37	Clr: -
	Pos: SOUTH MID	U#: 20

Ch: (505)	Type: 50° Source Four	
	Adr:	-
	Dm: 73	Clr: -
	Pos: NORTH MID	U#: 17

Ch: (505)	Type: 50° Source Four	
	Adr:	-
	Dm: 73	Clr: -
	Pos: NORTH MID	U#: 17

Ch: (506)	Type: MDG Atmosphere APS Hazer	
	Adr: 7/1	ND 194
	Dm:	Clr: -
	Pos: -	U#:

November 2019

Antigone LX Schedule

Sunday	Monday	Tuesday	Wednesday	Thursday	Friday	Saturday
27	28	29	30	31	1	2
3	4	5	6	7	8	9
		Shop Order Due	Items Delivered: Begin Labeling and Prep. Units	Spotting Call: Rigging Requires 4 Hands - All others start prep for Practicals	Prep and label Mult and Cable	
10	11 (Veterans Day)	12	13	14	15	16
SISTER ACT STRIKE	Hang 3-12: Begin Hanging Offstage Most Units	Finish Hanging All Units	Channel Check and Troubleshooting Onstage Rehearsal 7-11	Practical Build Day	Practical Build Day	Possible Practical Build 1pm-5pm
17	18	19	20	21	22	23
FOCUS 3-7	FOCUS 3-7	TECH 7-11	TECH 7-11	TECH 7-11	Off	Off
24	25	26	27	28	29	30
Off	Thanksgiving Break	Thanksgiving Break	Thanksgiving Break	Thanksgiving Day	Thanksgiving Break	Off

December 2019

Antigone LX Schedule

Sunday	Monday	Tuesday	Wednesday	Thursday	Friday	Saturday
1	2	3	4	5	6	7
	FINAL DRESS 7-11	PREVIEW 8PM	REHEARSAL 7-11PM	OPENING 8PM	PERFORMANCE 8PM	PERFORMANCE 2PM PERFORMANCE 8PM
8	9	10	11	12	13	14
PERFORMANCE 2PM STRIKE						
15	16	17	18	19	20	21
22	23	24	25	26	27	28
29	30	31				