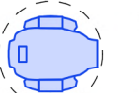





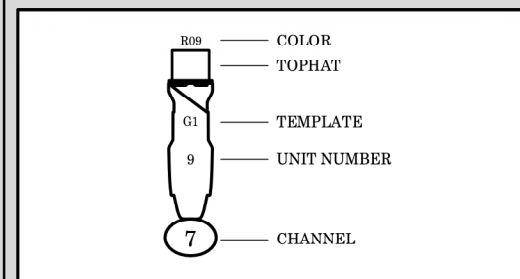


KEY

-  Martin MAC Viper  
Profile @ 1.225kw
-  Chauvet Rogue R1  
BeamWash @ 297 w  
Elation ZCL 360i @  
101 w
-  Martin Mac Aura XB  
@ 359w
-  Elation DTW Blinder  
700 @ 680 w  
Elation Cuepix 16IP @  
520 w
-  GLP Impression X4  
Bar 20 (20ch) @ 450w
-  Chauvet Rogue R1  
FX-B @ 207w
-  Chauvet AmHaze  
Stadium Open @  
1.28kw

TYPICAL



NOTES

1. BOOM POSITIONS MARKED AS DISTANCE FROM CL.
2. ALL BOOM HEIGHTS MEASURED FROM STAGE DECK UP TO CLAMP POSITION.
3. DROP COLOR, TEMPLATES, AND ACCESSORIES PRIOR TO FOCUS.
4. ALL CHANGES/SUBSTITUTIONS MUST BE APPROVED BY DESIGNER.

TEMPLATES



REVISIONS

DATE	CHANGES	WHO
11/04/22	Preliminary	MAO
11/11/22	Final	MAO

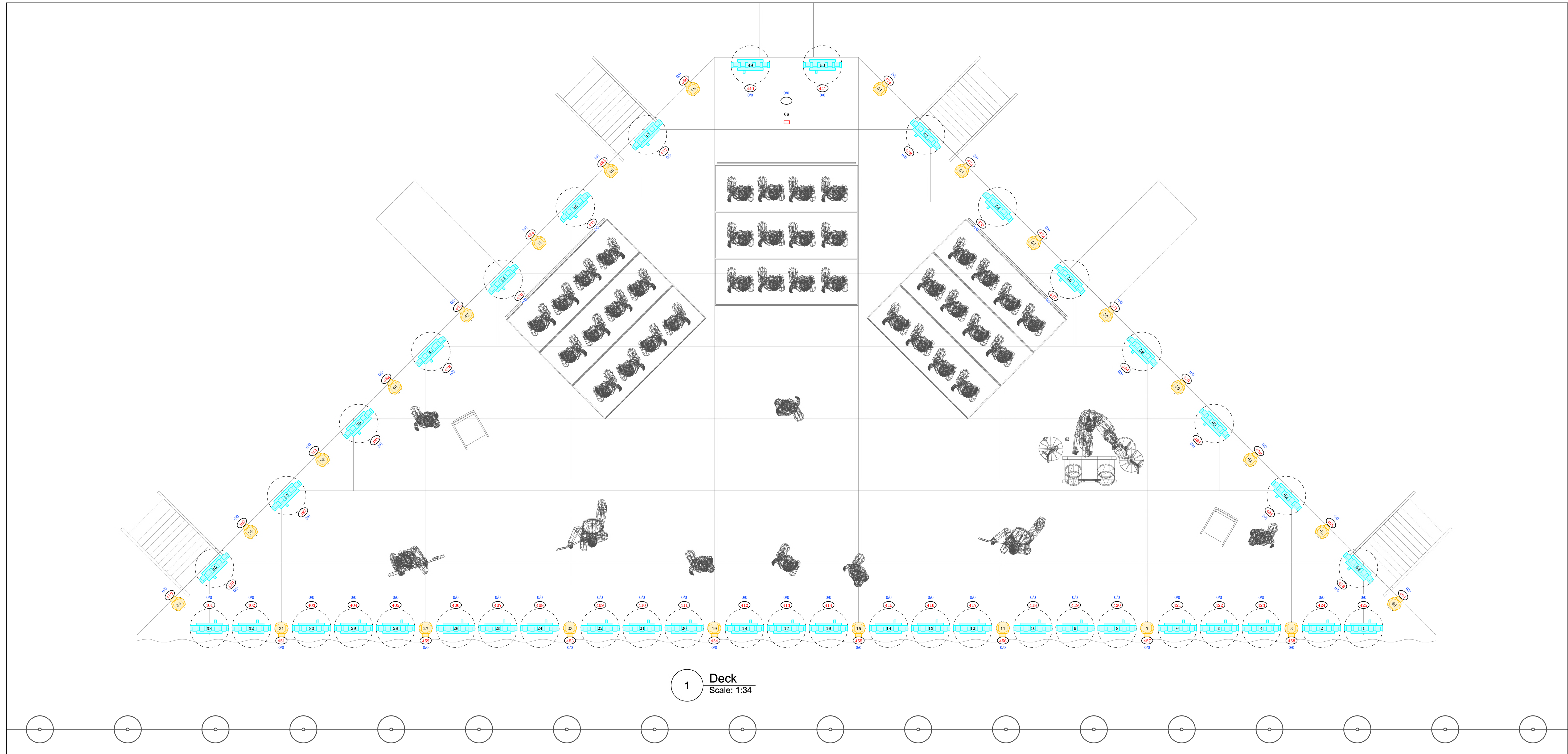
CaLARTS  
Wide Open Spaces

PRODUCER: CaLarts  
DIRECTOR: Director  
SETS: scenic  
COSTUMES: Costumes  
SOUND: Sound  
LIGHTING: Max Okst  
ASST. LX: ALD  
FE: FE  
ME: ME  
PROGRAM: Program

MO MAX OKST PLATE  
(631) 605-8525 | maxokst@gmail.com  
www.maxokst.com

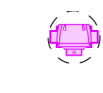



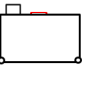
Overstage  
Various Arch D



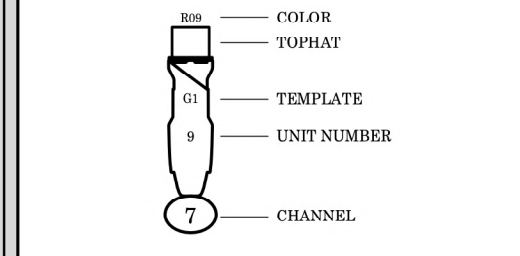


1 Deck  
Scale: 1:34

KEY

-  Martin MAC Viper  
Profile @ 1.225kw
-  Chauvet Rogue R1  
BeamWash @ 297 w  
Elation ZCL 360i @  
101 w
-  Martin Mac Aura XB  
@ 359w
-  Elation DTW Blinder  
700 @ 680 w
-  Elation Cuepix 16IP @  
520 w
-  GLP Impression X4  
Bar 20 (20ch) @ 450w
-  Chauvet Rogue R1  
FX-B @ 207w
-  Chauvet AmHaze  
Stadium Open @  
1.23kw

TYPICAL



NOTES

1. BOOM POSITIONS MARKED AS DISTANCE FROM CL
2. ALL BOOM HEIGHTS MEASURED FROM STAGE DECK UP TO CLAMP POSITION
3. DROP COLOR, TEMPLATES, AND ACCESSORIES PRIOR TO FOCUS
4. ALL CHANGES/SUBSTITUTIONS MUST BE APPROVED BY DESIGNER

TEMPLATES



REVISIONS

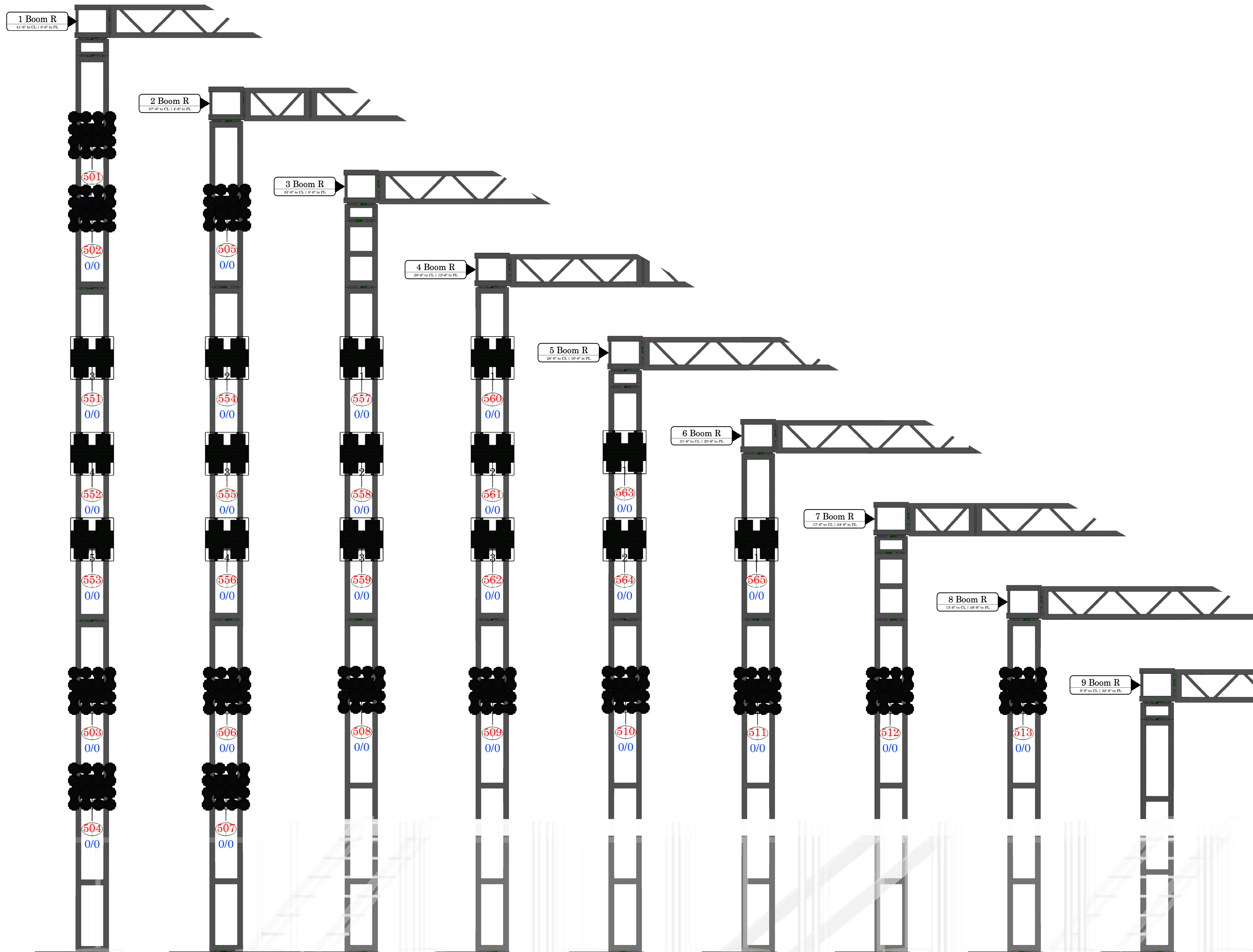
DATE	CHANGES	WHO
11/04/22	Preliminary	MAO
11/11/22	Final	MAO

CaLArTS  
Wide Open Spaces

- PRODUCER: CaArts
- DIRECTOR: Director
- SETS: scenic
- COSTUMES: Costumes
- SOUND: Sound
- LIGHTING: Max Okst
- ASST. LX: ALD
- FE: FE
- ME: ME
- PROGRAM: Program

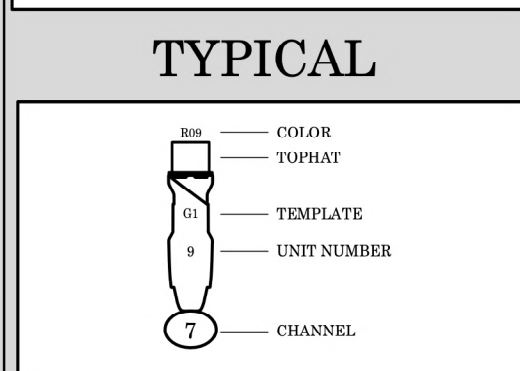
**MO MAX OKST** PLATE  
 (631) 605-8525 | maxokst@gmail.com  
 www.maxokst.com





**KEY**

- Martin MAC Viper Profile @ 1.225kw
- Chauvet Rogue R1 BeamWash @ 297 w Elation ZCL 360i @ 101 w
- Martin Mac Aura XB @ 359w
- Elation DTW Blinder 700 @ 680 w
- Elation Cuepix 16IP @ 520 w
- GLP Impression X4 Bar 20 (20ch) @ 450w
- Chauvet Rogue R1 FX-B @ 207w
- Chauvet AmHaze Stadium Open @ 1.23kw



- NOTES**
- BOOM POSITIONS MARKED AS DISTANCE FROM CL
  - ALL BOOM HEIGHTS MEASURED FROM STAGE DECK (0'-0") TO CLAMP POSITION
  - DROP COLOR, TEMPLATES, AND ACCESSORIES PRIOR TO FOCUS
  - ALL CHANGES/SUBSTITUTIONS MUST BE APPROVED BY DESIGNER

**TEMPLATES**

**REVISIONS**

DATE	CHANGES	WHO
11/04/22	Preliminary	MAO
11/11/22	Final	MAO

**CalArts**  
Wide Open Spaces

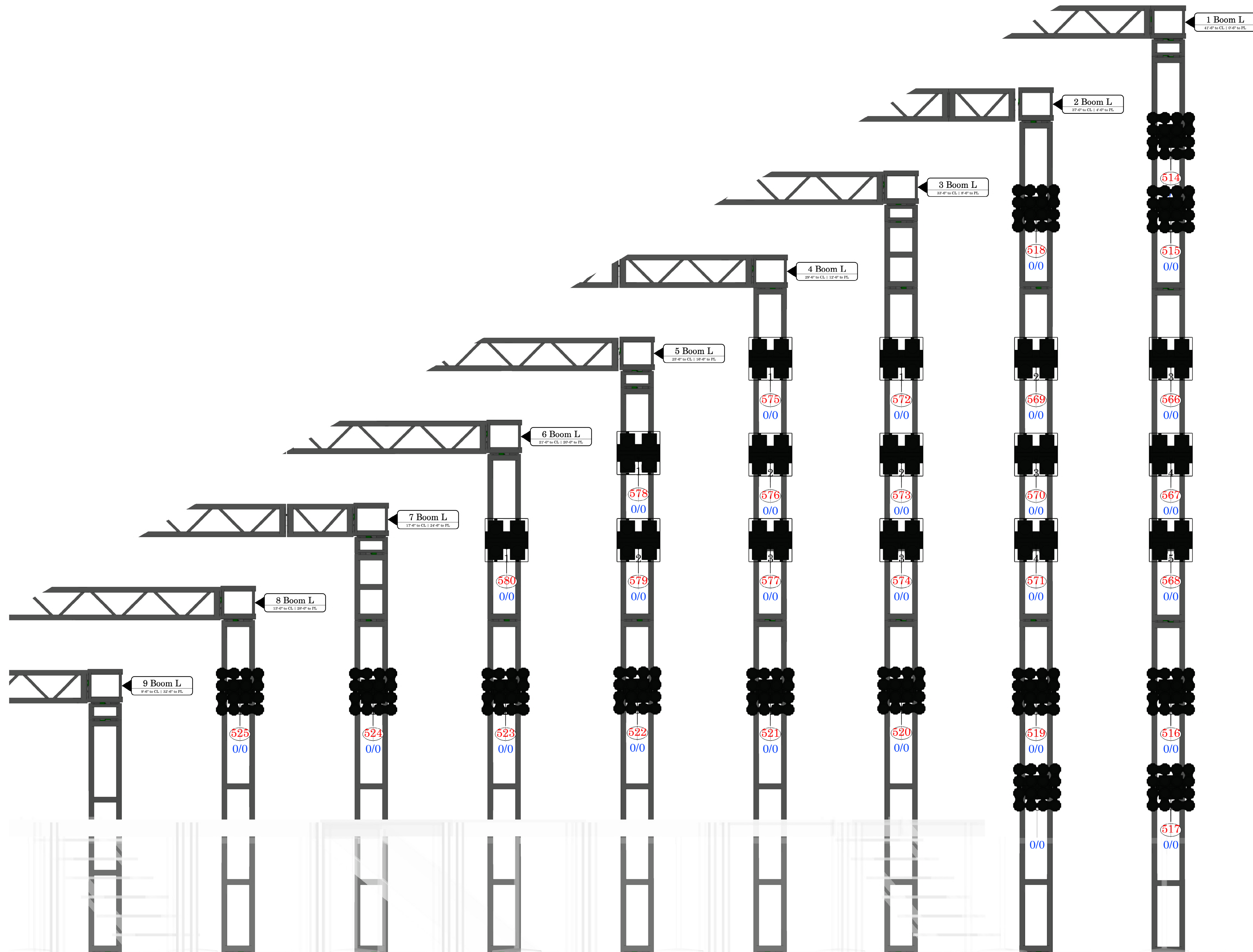
PRODUCER: CalArts  
DIRECTOR: Director  
SETS: Scenic  
COSTUMES: Costumes  
SOUND: Sound  
LIGHTING: Max Okst  
ASST. LX: ALD  
FE: FE  
ME: ME  
PROGRAM: Program

MO MAX OKST PLATE  
(631) 605-8525 | maxokst@gmail.com  
www.maxokst.com







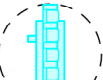
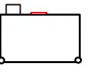
**SR Booms**  
3/4" = 1'-0" Arch D

3 OF 7

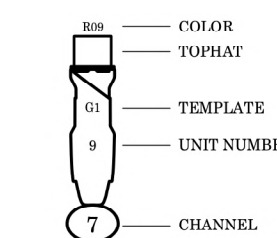




KEY

-  Martin MAC Viper  
Profile @ 1.225kw
-  Chauvet Rogue R1  
BeamWash @ 297 w  
Elation ZCL 360i @  
101 w
-  Martin Mac Aura XB  
@ 359w
-  Elation DTW Blinder  
700 @ 680 w
-  Elation Cuepix 16IP @  
520 w
-  GLP Impression X4  
Bar 20 (20ch) @ 450w
-  Chauvet Rogue R1  
FX-B @ 207w
-  Chauvet AmHaze  
Stadium Open @  
1.23kw

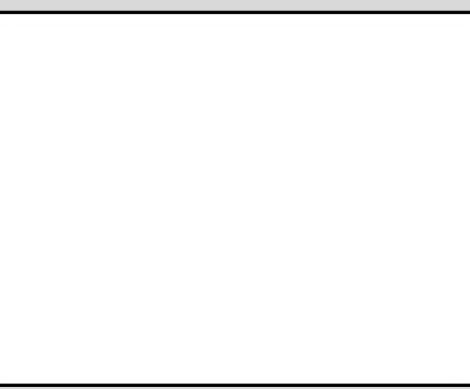
TYPICAL



NOTES

1. BOOM POSITIONS MARKED AS DISTANCE FROM CL
2. ALL BOOM HEIGHTS MEASURED FROM STAGE DECK (P-07) TO CLAMP POSITION
3. DROP COLOR, TEMPLATES, AND ACCESSORIES PRIOR TO FOCUS
4. ALL CHANGES/SUBSTITUTIONS MUST BE APPROVED BY DESIGNER

TEMPLATES




REVISIONS

DATE	CHANGES	WHO
11/04/22	Preliminary	MAO
11/11/22	Final	MAO

CaLArTS

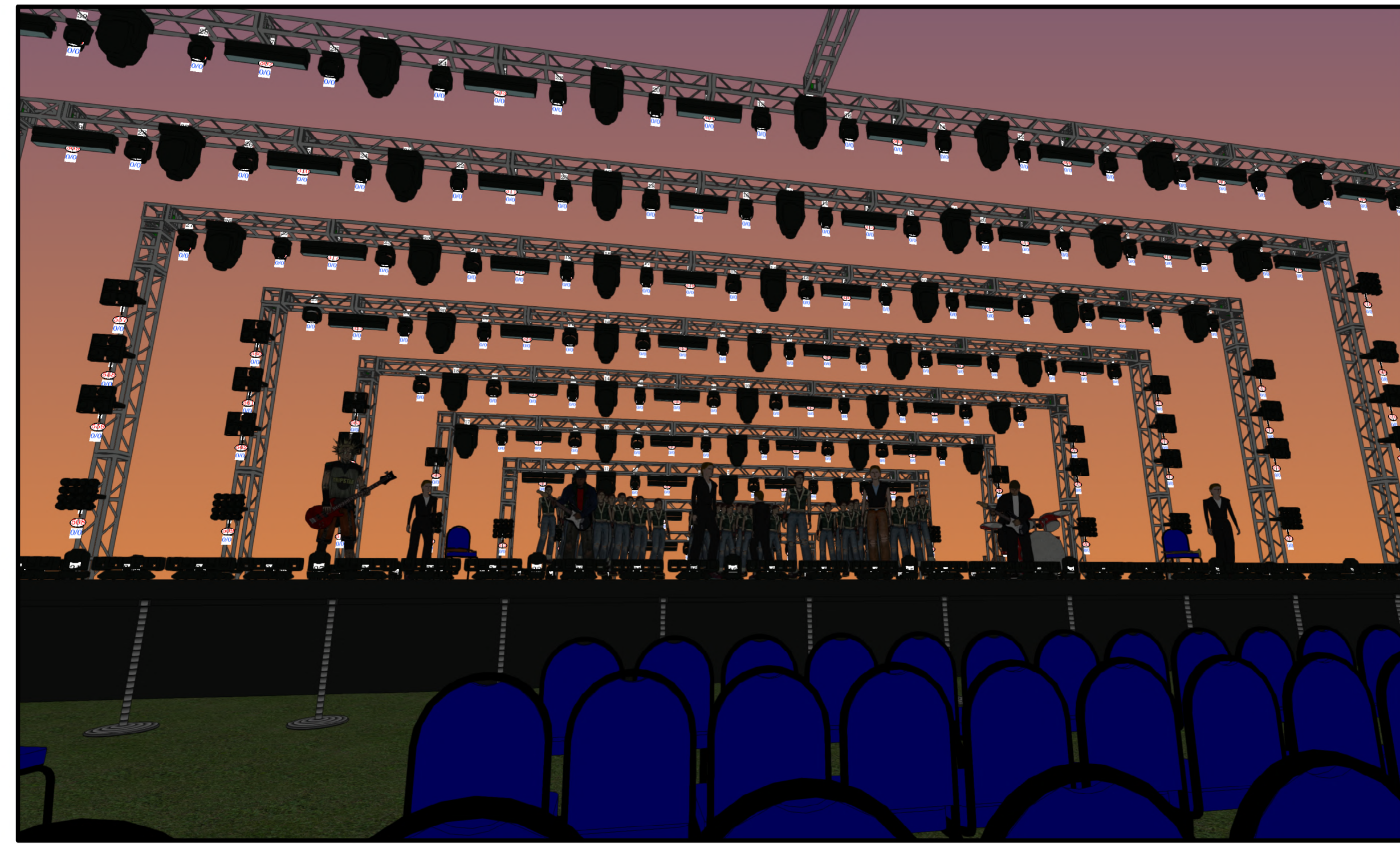
Wide Open Spaces

-  PRODUCER: CaLArTS
- DIRECTOR: Director
- SETS: Scenic
- COSTUMES: Costumes
- SOUND: Sound
- LIGHTING: Max Okst
- ASST. LX: ALD
- FE: FE
- ME: ME
- PROGRAM: Program

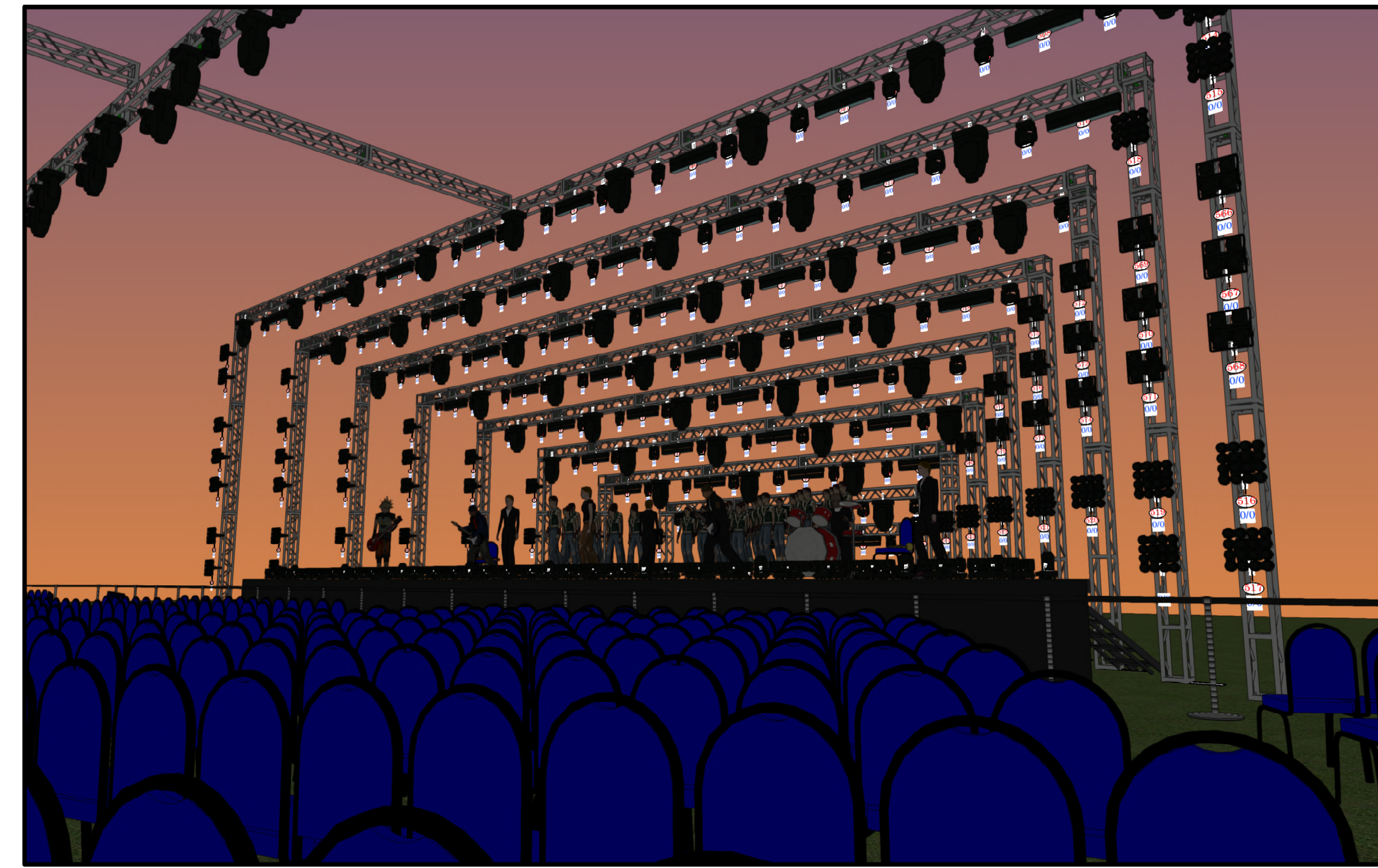
**MAX OKST** PLATE  
 (631) 605-8525 | maxokst@gmail.com  
 www.maxokst.com

**SL Booms** 4  
 3/4" = 1'-0" Arch D OF 7

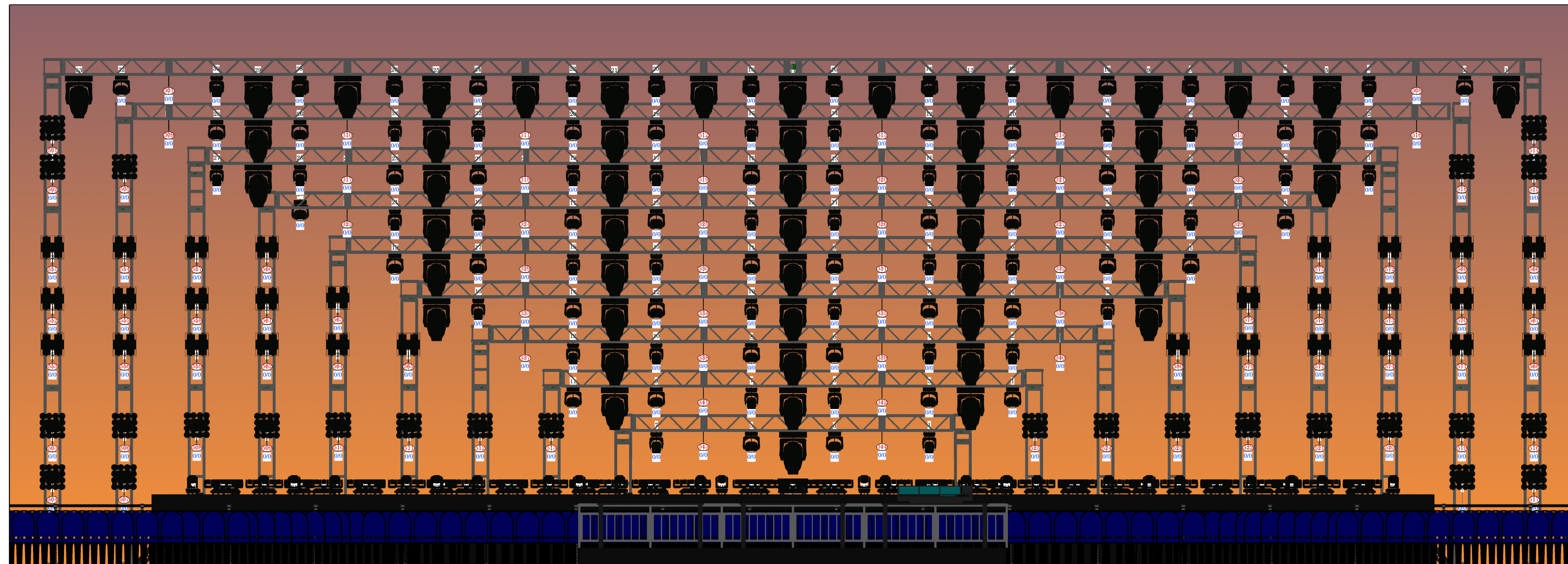







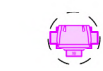





2 HL Camera  
Scale: 1/4" = 1'-0"

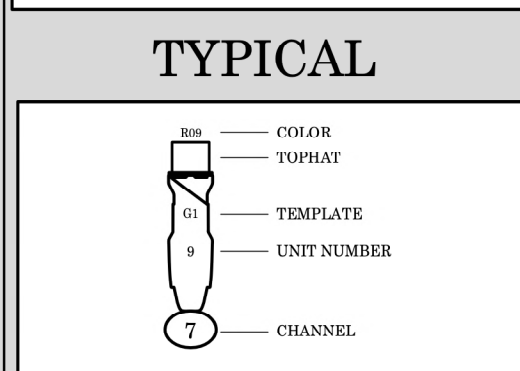


3 HR Camera  
Scale: 1/4" = 1'-0"



**KEY**

-  Martin MAC Viper Profile @ 1.225kw
-  Chauvet Rogue R1 BeamWash @ 297 w
-  Elation ZCL 360i @ 101 w
-  Martin Mac Aura XB @ 359w
-  Elation DTW Blinder 700 @ 680 w
-  Elation Cuepix 16IP @ 520 w
-  GLP Impression X4 Bar 20 (20ch) @ 450w
-  Chauvet Rogue R1 FX-B @ 207w
-  Chauvet AmHaze Stadium Open @ 1.23kw



- NOTES**
1. BOOM POSITIONS MARKED AS DISTANCE FROM CL
  2. ALL BOOM HEIGHTS MEASURED FROM STAGE DECK UP TO CLAMP POSITION
  3. DROP COLOR, TEMPLATES, AND ACCESSORIES PRIOR TO FOCUS
  4. ALL CHANGES/SUBSTITUTIONS MUST BE APPROVED BY DESIGNER

**TEMPLATES**

--

**REVISIONS**

DATE	CHANGES	WHO
11/04/22	Preliminary	MAO
11/17/22	Final	MAO

**calARTS**  
Wide Open Spaces

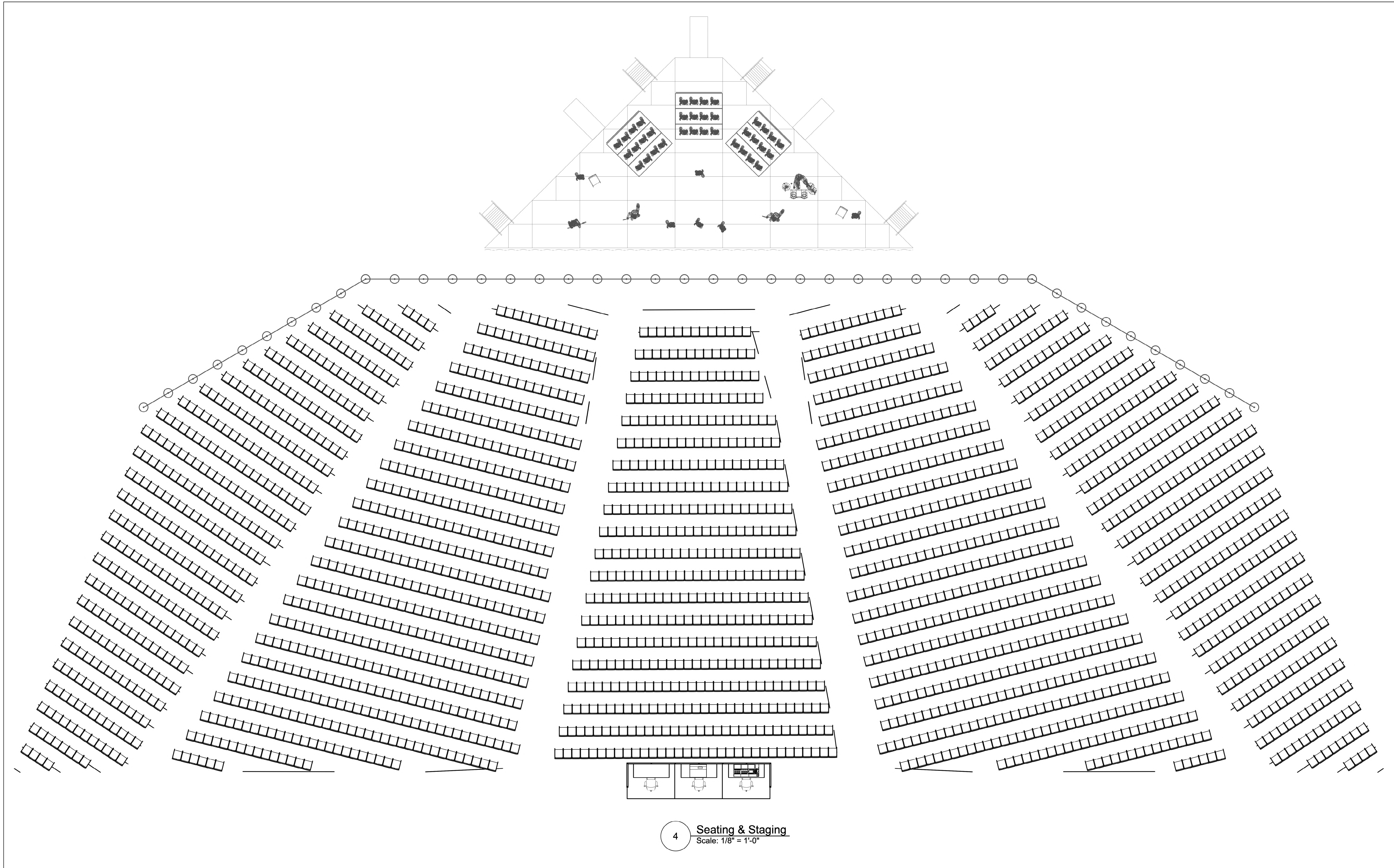
PRODUCER: CalArts  
DIRECTOR: Director  
SETS: Scenic  
COSTUMES: Costumes  
SOUND: Sound  
LIGHTING: Max Okst  
ASST. LX: ALD  
FE: FE  
ME: ME  
PROGRAM: Program

**MAX OKST** PLATE  
(631) 605-8525 | maxokst@gmail.com  
www.maxokst.com

**Elevations**  
Various Arch D


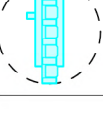
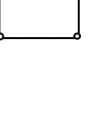
**5**  
OF 7



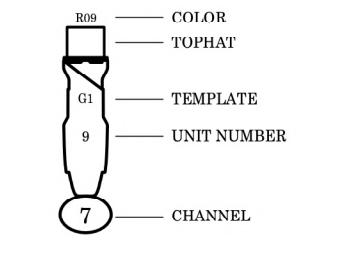


4 Seating & Staging  
Scale: 1/8" = 1'-0"

KEY

-  Martin MAC Viper Profile @ 1.225kw
-  Chauvet Rogue R1 BeamWash @ 297 w  
Elation ZCL 360i @ 101 w
-  Martin Mac Aura XB @ 359w
-  Elation DTW Blinder 700 @ 680 w  
Elation Cuepix 16IP @ 520 w
-  GLP Impression X4 Bar 20 (20ch) @ 450w
-  Chauvet Rogue R1 FX-B @ 207w
-  Chauvet AmHaze Stadium Open @ 1.23kw

TYPICAL



NOTES

1. BOOM POSITIONS MARKED AS DISTANCE FROM CL
2. ALL BOOM HEIGHTS MEASURED FROM STAGE DECK UP TO CLAMP POSITION
3. DROP COLOR, TEMPLATES, AND ACCESSORIES PRIOR TO FOCUS
4. ALL CHANGES/SUBSTITUTIONS MUST BE APPROVED BY DESIGNER

TEMPLATES

REVISIONS

DATE	CHANGES	WHO
11/04/22	Preliminary	MAO
11/11/22	Final	MAO

CalArts

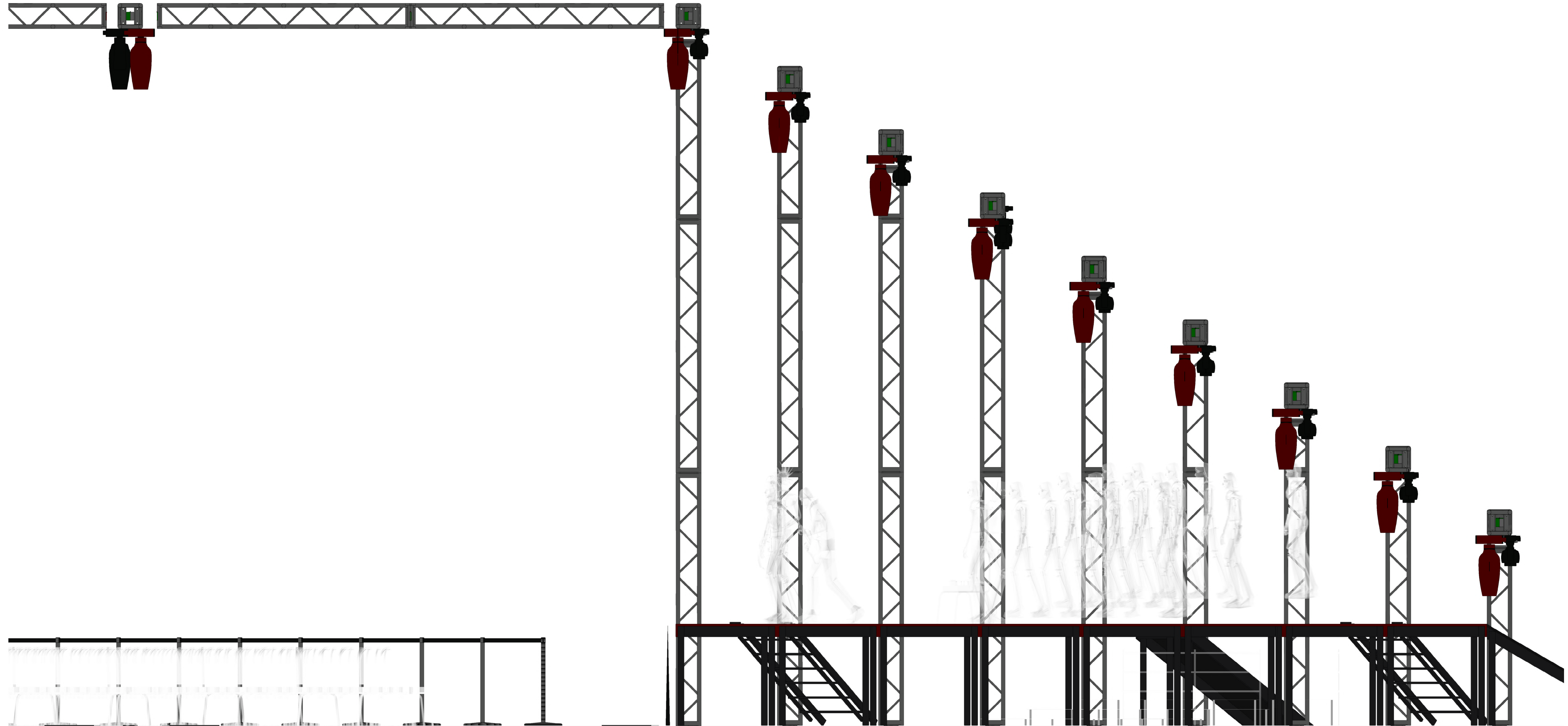
Wide Open Spaces

PRODUCER: CalArts  
 DIRECTOR: Director  
 SETS: Scenic  
 COSTUMES: Costumes  
 SOUND: Sound  
 LIGHTING: Max Okst  
 ASST. LX: ALD  
 FE: FE  
 ME: ME  
 PROGRAM: Program

MAX OKST PLATE  
 (631) 605-8525 | maxokst@gmail.com  
 www.maxokst.com

Seating  
 1/8" = 1'-0" Arch D

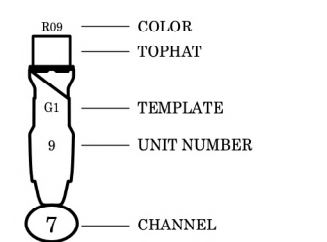




**KEY**

-  Martin MAC Viper  
Profile @ 1.225kw
-  Chauvet Rogue R1  
BeamWash @ 297 w  
Elation ZCL 360i @  
101 w
-  Martin Mac Aura XB  
@ 359w
-  Elation DTW Blinder  
700 @ 680 w
-  Elation Cuepix 16IP @  
520 w
-  GLP Impression X4  
Bar 20 (20ch) @ 450w
-  Chauvet Rogue R1  
FX-B @ 207w
-  Chauvet AmHaze  
Stadium Open @  
1.23kw

**TYPICAL**



**NOTES**

1. BOOM POSITIONS MARKED AS DISTANCE FROM CL
2. ALL BOOM HEIGHTS MEASURED FROM STAGE DECK (IF 6FT) TO CLAMP POSITION
3. DROP COLOR, TEMPLATES, AND ACCESSORIES PRIOR TO FOCUS
4. ALL CHANGES/SUBSTITUTIONS MUST BE APPROVED BY DESIGNER


**TEMPLATES**



**REVISIONS**

DATE	CHANGES	WHO
11/04/22	Preliminary	MAO
11/11/22	Final	MAO

**CaLARTS**  
Wide Open Spaces

 PRODUCER: CaLArts  
DIRECTOR: Director  
SETS: scenic  
COSTUMES: Costumes  
SOUND: Sound  
LIGHTING: Max Okst  
ASST. LX: ALD  
FE: FE  
ME: ME  
PROGRAM: Program

 **MAX OKST** PLATE  
(631) 605-8525 | maxokst@gmail.com  
www.maxokst.com

**Section** 7  
Various Arch D OF 7