

The Winter's Tale

Preliminary Research

LD: Max Okst



Max Okst | The Winter's Tale | Sicilia



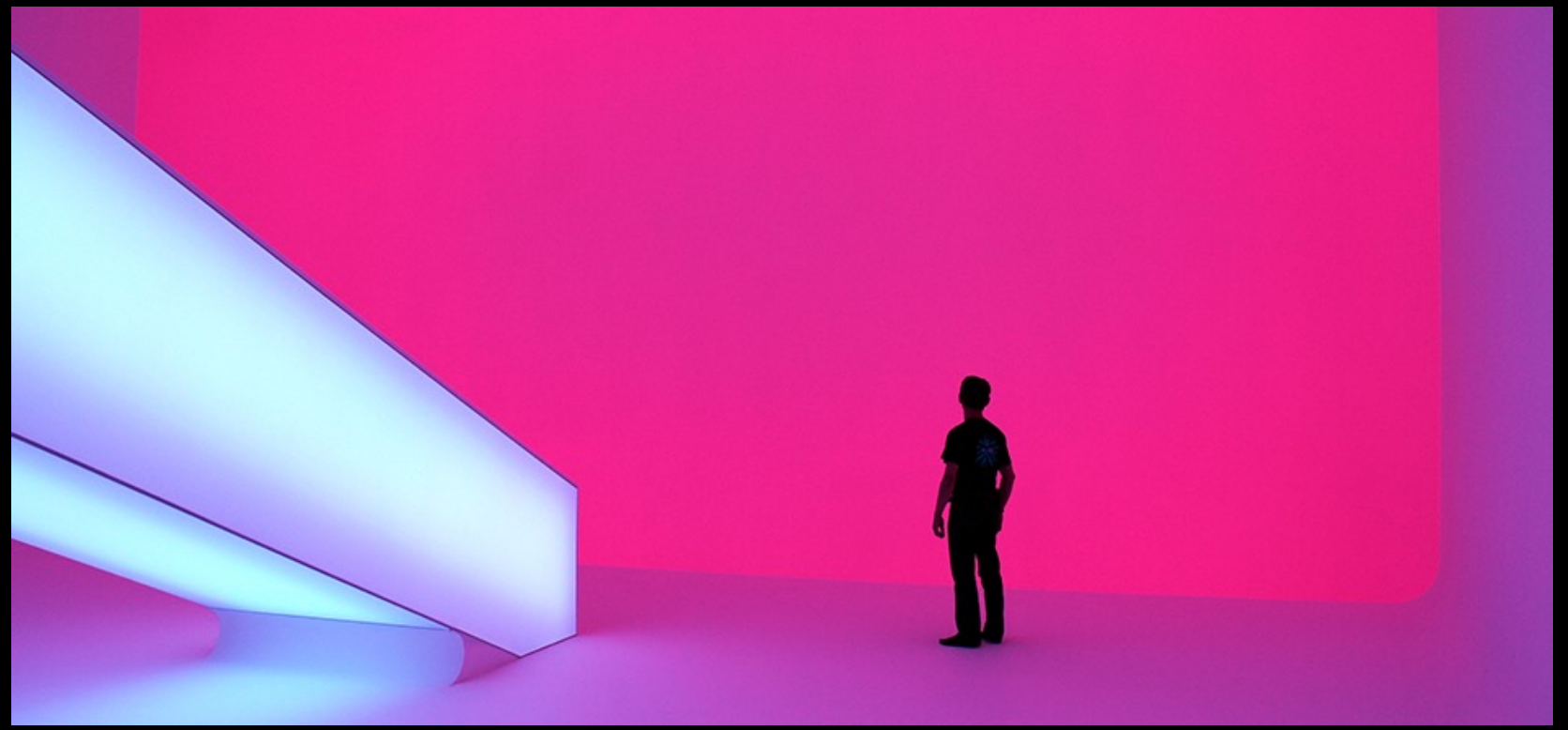
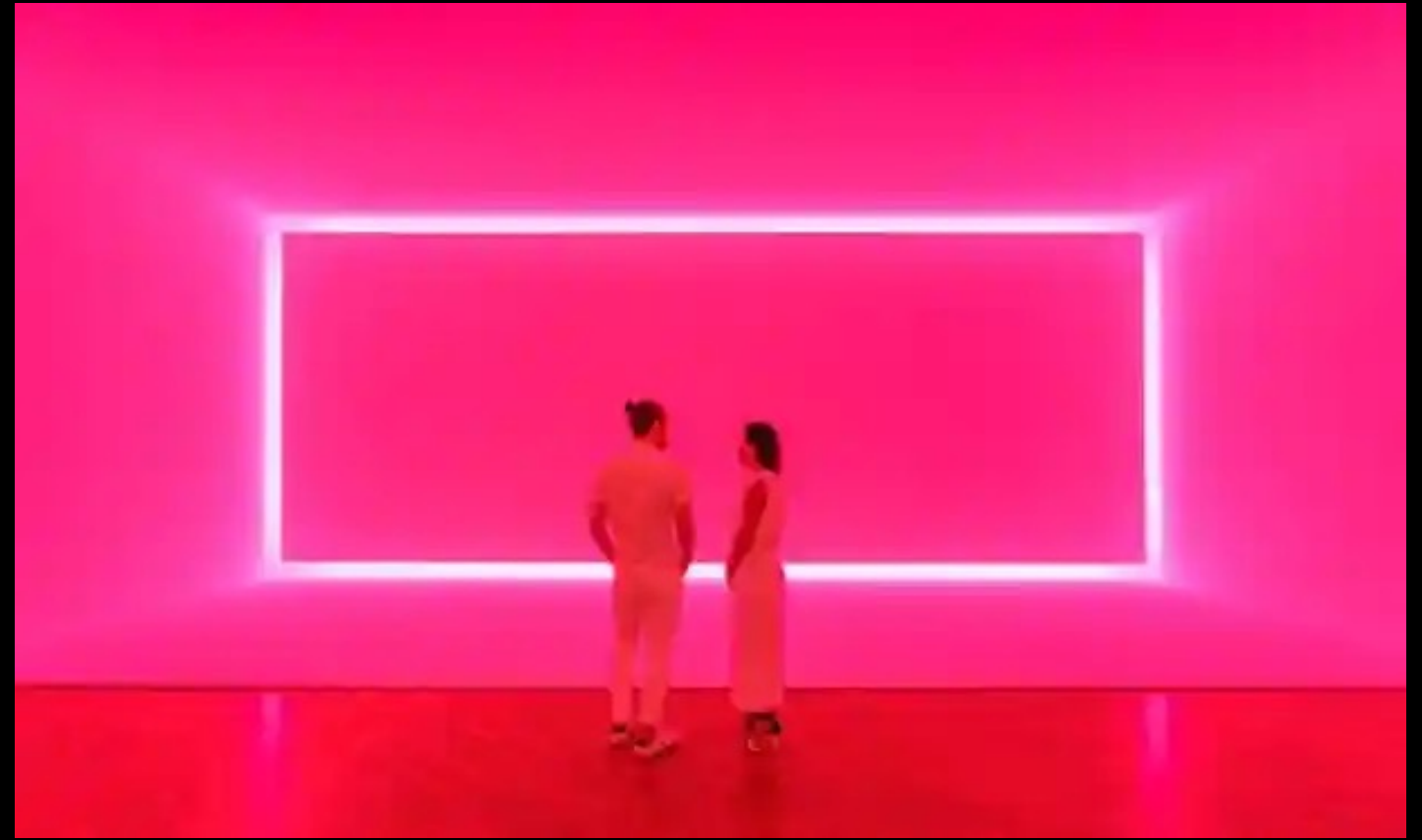
Max Okst | The Winter's Tale | Sicilia



Max Okst | The Winter's Tale | Bohemia



Max Okst | The Winter's Tale | Bohemia



Max Okst | The Winter's Tale | Bohemia



Max Okst | The Winter's Tale | Sicilia Start to Ending

Max Okst | The Winter's Tale | Systems List

Front

1. Front (C) (w/ wall) ↑
2. Front (W) (w/ wall) ↑

High Side C

3. Side (C) →
4. Side (C) ←

High Side W

5. Side (W) →
6. Side (W) ←

Statue Side W

7. Statue Radiate Side (W) →
8. Statue Radiate Side (W) ←

Low Side C

9. Side (C) →
10. Side (C) ←

Low Side W

11. Side (W) →
12. Side (W) ←

Back

13. BX (C)
14. BX (W)

Low Diag Tone

15. L Tone (C) →
16. L Tone (C) ←
17. L Tone (W) →
18. L Tone (W) ←
19. L Tink (P) →
20. L Tink (P) ←

Balcony Rail

21. L Tone (C) →
22. L Tone (C) ←
23. L Tone (W) →

Windows

24. High (C)
25. Low (C)
26. High (W)
27. Low (W)

Doors

28. High (C) ↘
29. High (C) ✓
30. Low (C) ↘
31. Low (C) ✓
32. High (W) ↘
33. High (W) ✓
34. Low (W) ↘
35. Low (W) ✓

Cyc

36. Cyc ()

Practicals

37. Portal Bulbs
38. C Chandelier
39. Statue Chandeliers x22

Wall Scrape High

40. Wall Scrape High (C)
41. Wall Scrape High (W)
42. Wall Scrape High (Scroll)
43. Wall Scrape High (Template)

Wall Scrape Mid

44. Wall Scrape Mid (C)
45. Wall Scrape Mid (W)
46. Wall Scrape Mid (Scroll)
47. Wall Scrape Mid (Template)

Wall Scrape Low

48. Wall Scrape Low (C)
49. Wall Scrape Low (W)
50. Wall Scrape Low (Scroll)
51. Wall Scrape Low (Template)

LED Tape

Curtain Warmers

Max Okst | The Winter's Tale | Systems List

52. Curtain Warmer ↗

53. Curtain Warmer ↖

Special FX

54. Hazer

House

55. House

CalArts
 School of Theatre
 12/15/22

LD: Max Okst
 maxokst@gmail.com
 (631) 605-9525

Chan	Position	U#	Instrument Type & Load	Purpose	Accessory	Color	Gobo
1	2 FOH High	10	ETC Source 4 26deg 575w	UMR F/L	6.25" TOP HAT	L201+R119	
2	2 FOH High	8	ETC Source 4 26deg 575w	UMCR F/L	6.25" TOP HAT	L201+R119	
3	2 FOH High	6	ETC Source 4 26deg 575w	UMC F/L	6.25" TOP HAT	L201+R119	
4	2 FOH High	4	ETC Source 4 26deg 575w	UMCL F/L	6.25" TOP HAT	L201+R119	
5	2 FOH High	2	ETC Source 4 26deg 575w	UML F/L	6.25" TOP HAT	L201+R119	
6	2 FOH Low	20	ETC Source 4 26deg 575w	DMR F/L	6.25" TOP HAT	L201+R119	
7	2 FOH Low	16	ETC Source 4 26deg 575w	DMCR F/L	6.25" TOP HAT	L201+R119	
8	2 FOH Low	12	ETC Source 4 26deg 575w	DMC F/L	6.25" TOP HAT	L201+R119	
9	2 FOH Low	8	ETC Source 4 26deg 575w	DMCL F/L	6.25" TOP HAT	L201+R119	
10	2 FOH Low	4	ETC Source 4 26deg 575w	DML F/L	6.25" TOP HAT	L201+R119	
11	2 FOH Low	18	ETC Source 4 26deg 575w	DR F/L	6.25" TOP HAT	L201+R119	
12	2 FOH Low	14	ETC Source 4 26deg 575w	DCR F/L	6.25" TOP HAT	L201+R119	
13	2 FOH Low	10	ETC Source 4 26deg 575w	DSC F/L	6.25" TOP HAT	L201+R119	
14	2 FOH Low	6	ETC Source 4 26deg 575w	DCL F/L	6.25" TOP HAT	L201+R119	
15	2 FOH Low	2	ETC Source 4 26deg 575w	DL F/L	6.25" TOP HAT	L201+R119	
16	Apron E	27	ETC Source 4 36deg 575w	USR F/L		L201+R119	
17	Apron E	21	ETC Source 4 36deg 575w	USCR F/L		L201+R119	
18	Apron E	17	ETC Source 4 36deg 575w	USC F/L		L201+R119	
19	Apron E	11	ETC Source 4 36deg 575w	USCL F/L		L201+R119	
20	Apron E	5	ETC Source 4 36deg 575w	USL F/L C		L201+R119	
21	2 FOH High	9	ETC Source 4 26deg 575w	UMR F/L	6.25" TOP HAT	R3409+R119	
22	2 FOH High	7	ETC Source 4 26deg 575w	UMCR F/L	6.25" TOP HAT	R3409+R119	
23	2 FOH High	5	ETC Source 4 26deg 575w	UMC F/L	6.25" TOP HAT	R3409+R119	
24	2 FOH High	3	ETC Source 4 26deg 575w	UMCL F/L	6.25" TOP HAT	R3409+R119	
25	2 FOH High	1	ETC Source 4 26deg 575w	UML F/L	6.25" TOP HAT	R3409+R119	
26	2 FOH Low	19	ETC Source 4 26deg 575w	DMR F/L	6.25" TOP HAT	R3409+R119	
27	2 FOH Low	15	ETC Source 4 26deg 575w	DMCR F/L	6.25" TOP HAT	R3409+R119	

Chan	Position	U#	Instrument Type & Load	Purpose	Accessory	Color	Gobo
28	2 FOH Low	11	ETC Source 4 26deg 575w	DMC F/L	6.25" TOP HAT	R3409+R119	
29	2 FOH Low	7	ETC Source 4 26deg 575w	DMCL F/L	6.25" TOP HAT	R3409+R119	
30	2 FOH Low	3	ETC Source 4 26deg 575w	DML F/L	6.25" TOP HAT	R3409+R119	
31	2 FOH Low	17	ETC Source 4 26deg 575w	DR F/L	6.25" TOP HAT	R3409+R119	
32	2 FOH Low	13	ETC Source 4 26deg 575w	DCR F/L	6.25" TOP HAT	R3409+R119	
33	2 FOH Low	9	ETC Source 4 26deg 575w	DSC F/L	6.25" TOP HAT	R3409+R119	
34	2 FOH Low	5	ETC Source 4 26deg 575w	DCL F/L	6.25" TOP HAT	R3409+R119	
35	2 FOH Low	1	ETC Source 4 26deg 575w	DL F/L	6.25" TOP HAT	R3409+R119	
36	Apron E	26	ETC Source 4 36deg 575w	USR F/L		R3409+R119	
37	Apron E	20	ETC Source 4 36deg 575w	USCR F/L		R3409+R119	
38	Apron E	14	ETC Source 4 36deg 575w	USC F/L		R3409+R119	
39	Apron E	10	ETC Source 4 36deg 575w	USCL F/L		R3409+R119	
40	Apron E	4	ETC Source 4 36deg 575w	USL F/L W		R3409+R119	
41	1 Electric	11	ETC Source 4 36deg 575w	F/L W		R3409+R119	
42	1 Electric	9	ETC Source 4 36deg 575w	F/L W		R3409+R119	
43	1 Electric	8	ETC Source 4 36deg 575w	F/L W		R3409+R119	
44	1 Electric	7	ETC Source 4 36deg 575w	F/L W		R3409+R119	
45	1 Electric	5	ETC Source 4 36deg 575w	F/L W		R3409+R119	
46	7 Electric	5	ETC Source 4 36deg 575w	F/L W		R3409+R119	
47	7 Electric	4	ETC Source 4 36deg 575w	F/L W		R3409+R119	
48	7 Electric	3	ETC Source 4 36deg 575w	F/L W		R3409+R119	
49	7 Electric	2	ETC Source 4 36deg 575w	F/L W		R3409+R119	
50	7 Electric	1	ETC Source 4 36deg 575w	F/L W		R3409+R119	
51	12 Electric	12	ETC Source 4 36deg 575w	F/L W		R3409+R119	
52	12 Electric	10	ETC Source 4 36deg 575w	F/L W		R3409+R119	
53	12 Electric	6	ETC Source 4 36deg 575w	F/L W		R3409+R119	
54	12 Electric	2	ETC Source 4 36deg 575w	F/L W		R3409+R119	
55	12 Electric	1	ETC Source 4 36deg 575w	F/L W		R3409+R119	
61	1 BX BM L	1	ETC Source 4 36deg 575w	AP P/E >		L200+R132	

Chan	Position	U#	Instrument Type & Load	Purpose	Accessory	Color	Gobo
62	Apron E	30	ETC Source 4 36deg 575w	AP P/E >		L200+R132	
63	Apron E	29	ETC Source 4 26deg 575w	AP P/E >		L200+R132	
64	Apron E	28	ETC Source 4 26deg 575w	AP P/E >		L200+R132	
65	Apron E	25	ETC CE Source4 19deg 575w	AP P/E >		L200+R132	
66	Apron E	22	ETC CE Source4 19deg 575w	AP P/E >		L200+R132	
67	1 BM R	1	ETC Source 4 36deg 575w	L1 P/E >		L200+R132	
68	1 Electric	15	ETC Source 4 36deg 575w	L1 P/E >		L200+R132	
69	1 Electric	14	ETC Source 4 26deg 575w	L1 P/E >		L200+R132	
70	1 Electric	13	ETC Source 4 26deg 575w	L1 P/E >		L200+R132	
71	1 Electric	12	ETC CE Source4 19deg 575w	L1 P/E >		L200+R132	
72	1 Electric	10	ETC CE Source4 19deg 575w	L1 P/E >		L200+R132	
73	1 BM R	2	ETC Source 4 36deg 575w	L2 P/E >		L200+R132	
74	3 Electric	20	ETC Source 4 36deg 575w	L2 P/E >		L200+R132	
75	3 Electric	19	ETC Source 4 26deg 575w	L2 P/E >		L200+R132	
76	3 Electric	18	ETC Source 4 26deg 575w	L2 P/E >		L200+R132	
77	3 Electric	17	ETC CE Source4 19deg 575w	L2 P/E >		L200+R132	
78	3 Electric	16	ETC CE Source4 19deg 575w	L2 P/E >		L200+R132	
79	Apron E	9	ETC CE Source4 19deg 575w	AP P/E <		L200+R132	
80	Apron E	6	ETC CE Source4 19deg 575w	AP P/E <		L200+R132	
81	Apron E	3	ETC Source 4 26deg 575w	AP P/E <		L200+R132	
82	Apron E	2	ETC Source 4 26deg 575w	AP P/E <		L200+R132	
83	Apron E	1	ETC Source 4 36deg 575w	AP P/E <		L200+R132	
84	1 BX BM L	1	ETC Source 4 36deg 575w	AP P/E <		L200+R132	
85	1 Electric	6	ETC CE Source4 19deg 575w	L1 P/E <		L200+R132	
86	1 Electric	4	ETC CE Source4 19deg 575w	L1 P/E <		L200+R132	
87	1 Electric	3	ETC Source 4 26deg 575w	L1 P/E <		L200+R132	
88	1 Electric	2	ETC Source 4 26deg 575w	L1 P/E <		L200+R132	
89	1 Electric	1	ETC Source 4 36deg 575w	L1 P/E <		L200+R132	
90	1 BM L	1	ETC Source 4 36deg 575w	L1 P/E <		L200+R132	



Chan	Position	U#	Instrument Type & Load	Purpose	Accessory	Color	Gobo
91	3 Electric	5	ETC CE Source4 19deg 575w	L2 P/E <		L200+R132	
92	3 Electric	4	ETC CE Source4 19deg 575w	L2 P/E <		L200+R132	
93	3 Electric	3	ETC Source 4 26deg 575w	L2 P/E <		L200+R132	
94	3 Electric	2	ETC Source 4 26deg 575w	L2 P/E <		L200+R132	
95	3 Electric	1	ETC Source 4 36deg 575w	L2 P/E <		L200+R132	
96	1 BM L	2	ETC Source 4 36deg 575w	L2 P/E <		L200+R132	
101	2 Electric	10	ETC Source 4 36deg 575w	L1 Side >		R3408+R119	
102	2 Electric	9	ETC Source 4 36deg 575w	L1 Side >		R3408+R119	
103	2 Electric	8	ETC Source 4 36deg 575w	L1 Side >		R3408+R119	
104	2 Electric	6	ETC Source 4 36deg 575w	L1 Side >		R3408+R119	
105	2 Electric	4	ETC Source 4 36deg 575w	L1 Side >		R3408+R119	
106	5 Electric	8	ETC Source 4 36deg 575w	L2 Side >		R3408+R119	
107	5 Electric	7	ETC Source 4 36deg 575w	L2 Side >		R3408+R119	
108	5 Electric	5	ETC Source 4 36deg 575w	L2 Side >		R3408+R119	
109	5 Electric	3	ETC Source 4 36deg 575w	L2 Side >		R3408+R119	
110	9 Electric	10	ETC Source 4 36deg 575w	L3 Side >		R3408+R119	
111	9 Electric	9	ETC Source 4 36deg 575w	L3 Side >		R3408+R119	
112	9 Electric	8	ETC Source 4 36deg 575w	L3 Side >		R3408+R119	
113	9 Electric	6	ETC Source 4 36deg 575w	L3 Side >		R3408+R119	
114	9 Electric	4	ETC Source 4 36deg 575w	L3 Side >		R3408+R119	
115	13 Electric	14	ETC Source 4 36deg 575w	L4 Side >		R3408+R119	
116	13 Electric	13	ETC Source 4 36deg 575w	L4 Side >		R3408+R119	
117	13 Electric	11	ETC Source 4 36deg 575w	L4 Side >		R3408+R119	
118	13 Electric	8	ETC Source 4 36deg 575w	L4 Side >		R3408+R119	
119	13 Electric	5	ETC Source 4 36deg 575w	L4 Side >		R3408+R119	
120	15 Electric	14	S4 ZOOM 575w	L5 Side >		R3408+R119	
121	15 Electric	13	S4 ZOOM 575w	L5 Side >		R3408+R119	
122	15 Electric	11	S4 ZOOM 575w	L5 Side >		R3408+R119	
123	15 Electric	8	S4 ZOOM 575w	L5 Side >		R3408+R119	

Chan	Position	U#	Instrument Type & Load	Purpose	Accessory	Color	Gobo
124	15 Electric	5	S4 ZOOM 575w	L5 Side >		R3408+R119	
125	2 Electric	1	ETC Source 4 36deg 575w	L1 Side <		R3408+R119	
126	2 Electric	2	ETC Source 4 36deg 575w	L1 Side <		R3408+R119	
127	2 Electric	3	ETC Source 4 36deg 575w	L1 Side <		R3408+R119	
128	2 Electric	5	ETC Source 4 36deg 575w	L1 Side <		R3408+R119	
129	2 Electric	7	ETC Source 4 36deg 575w	L1 Side <		R3408+R119	
130	5 Electric	1	ETC Source 4 36deg 575w	L2 Side <		R3408+R119	
131	5 Electric	2	ETC Source 4 36deg 575w	L2 Side <		R3408+R119	
132	5 Electric	4	ETC Source 4 36deg 575w	L2 Side <		R3408+R119	
133	5 Electric	6	ETC Source 4 36deg 575w	L2 Side <		R3408+R119	
134	9 Electric	1	ETC Source 4 36deg 575w	L3 Side <		R3408+R119	
135	9 Electric	2	ETC Source 4 36deg 575w	L3 Side <		R3408+R119	
136	9 Electric	3	ETC Source 4 36deg 575w	L3 Side <		R3408+R119	
137	9 Electric	5	ETC Source 4 36deg 575w	L3 Side <		R3408+R119	
138	9 Electric	7	ETC Source 4 36deg 575w	L3 Side <		R3408+R119	
139	13 Electric	1	ETC Source 4 36deg 575w	L4 Side <		R3408+R119	
140	13 Electric	2	ETC Source 4 36deg 575w	L4 Side <		R3408+R119	
141	13 Electric	4	ETC Source 4 36deg 575w	L4 Side <		R3408+R119	
142	13 Electric	7	ETC Source 4 36deg 575w	L4 Side <		R3408+R119	
143	13 Electric	10	ETC Source 4 36deg 575w	L4 Side <		R3408+R119	
144	15 Electric	1	S4 ZOOM 575w	L5 Side <		R3408+R119	
145	15 Electric	2	S4 ZOOM 575w	L5 Side <		R3408+R119	
146	15 Electric	4	S4 ZOOM 575w	L5 Side <		R3408+R119	
147	15 Electric	7	S4 ZOOM 575w	L5 Side <		R3408+R119	
148	15 Electric	10	S4 ZOOM 575w	L5 Side <		R3408+R119	
161	Apron E	24	ETC Source 4 26deg 575w	DSR Apron BX		L283+R119	
162	Apron E	19	ETC Source 4 26deg 575w	DSRC Apron BX		L283+R119	
163	Apron E	16	ETC Source 4 26deg 575w	DSC Apron BX		L283+R119	

Chan	Position	U#	Instrument Type & Load	Purpose	Accessory	Color	Gobo
164	Apron E	13	ETC Source 4 26deg 575w	DSL	Apron BX	L283+R119	
165	Apron E	8	ETC Source 4 26deg 575w	DSL	Apron BX	L283+R119	
166	3 Electric	15	ETC Source 4 26deg 575w	Apon	BX C	L283+R119	
167	3 Electric	13	ETC Source 4 26deg 575w	Apon	BX C	L283+R119	
168	3 Electric	11	ETC Source 4 26deg 575w	Apon	BX C	L283+R119	
169	3 Electric	9	ETC Source 4 26deg 575w	Apon	BX C	L283+R119	
170	3 Electric	7	ETC Source 4 26deg 575w	Apon	BX C	L283+R119	
171	4 Electric	10	ETC Source 4 26deg 575w	L1	BX C	L283+R119	
172	4 Electric	8	ETC Source 4 26deg 575w	L1	BX C	L283+R119	
173	4 Electric	6	ETC Source 4 26deg 575w	L1	BX C	L283+R119	
174	4 Electric	4	ETC Source 4 26deg 575w	L1	BX C	L283+R119	
175	4 Electric	2	ETC Source 4 26deg 575w	L1	BX C	L283+R119	
176	6 Electric	10	ETC Source 4 36deg 575w	L2	BX C	L283+R119	
177	6 Electric	8	ETC Source 4 36deg 575w	L2	BX C	L283+R119	
178	6 Electric	6	ETC Source 4 36deg 575w	L2	BX C	L283+R119	
179	6 Electric	4	ETC Source 4 36deg 575w	L2	BX C	L283+R119	
180	6 Electric	2	ETC Source 4 36deg 575w	L2	BX C	L283+R119	
181	Apron E	23	ETC Source 4 26deg 575w	DSR	Apron BX	R3411+R119	
182	Apron E	18	ETC Source 4 26deg 575w	DSRC	Apron BX	R3411+R119	
183	Apron E	15	ETC Source 4 26deg 575w	DSC	Apron BX	R3411+R119	
184	Apron E	12	ETC Source 4 26deg 575w	DSL	Apron BX	R3411+R119	
185	Apron E	7	ETC Source 4 26deg 575w	DSL	Apron BX	R3411+R119	
186	3 Electric	14	ETC Source 4 26deg 575w	Apon	BX W	R3411+R119	
187	3 Electric	12	ETC Source 4 26deg 575w	Apon	BX W	R3411+R119	
188	3 Electric	10	ETC Source 4 26deg 575w	Apon	BX W	R3411+R119	
189	3 Electric	8	ETC Source 4 26deg 575w	Apon	BX W	R3411+R119	
190	3 Electric	6	ETC Source 4 26deg 575w	Apon	BX W	R3411+R119	

Chan	Position	U#	Instrument Type & Load	Purpose	Accessory	Color	Gobo
191	4 Electric	9	ETC Source 4 26deg 575w	L1 BX W		R3411+R119	
192	4 Electric	7	ETC Source 4 26deg 575w	L1 BX W		R3411+R119	
193	4 Electric	5	ETC Source 4 26deg 575w	L1 BX W		R3411+R119	
194	4 Electric	3	ETC Source 4 26deg 575w	L1 BX W		R3411+R119	
195	4 Electric	1	ETC Source 4 26deg 575w	L1 BX W		R3411+R119	
196	6 Electric	9	ETC Source 4 36deg 575w	L2 BX W		R3411+R119	
197	6 Electric	7	ETC Source 4 36deg 575w	L2 BX W		R3411+R119	
198	6 Electric	5	ETC Source 4 36deg 575w	L2 BX W		R3411+R119	
199	6 Electric	3	ETC Source 4 36deg 575w	L2 BX W		R3411+R119	
200	6 Electric	1	ETC Source 4 36deg 575w	L2 BX W		R3411+R119	
201	11 Electric	9	ETC Source 4 36deg 575w	L3 BX		R3411+R119	
202	11 Electric	7	ETC Source 4 36deg 575w	L3 BX		R3411+R119	
203	11 Electric	5	ETC Source 4 36deg 575w	L3 BX		R3411+R119	
204	11 Electric	3	ETC Source 4 36deg 575w	L3 BX		R3411+R119	
205	11 Electric	1	ETC Source 4 36deg 575w	L3 BX		R3411+R119	
206	14 Electric	14	ETC Source 4 36deg 575w	L4 BX		R3411+R119	
207	14 Electric	11	ETC Source 4 36deg 575w	L4 BX		R3411+R119	
208	14 Electric	8	ETC Source 4 36deg 575w	L4 BX		R3411+R119	
209	14 Electric	4	ETC Source 4 36deg 575w	L4 BX		R3411+R119	
210	14 Electric	2	ETC Source 4 36deg 575w	L4 BX		R3411+R119	
211	16 Electric	7	ETC Source 4 36deg 575w	L5 BX		R3411+R119	
212	16 Electric	6	ETC Source 4 36deg 575w	L5 BX		R3411+R119	
213	16 Electric	4	ETC Source 4 36deg 575w	L5 BX		R3411+R119	
214	16 Electric	2	ETC Source 4 36deg 575w	L5 BX		R3411+R119	
215	16 Electric	1	ETC Source 4 36deg 575w	L5 BX		R3411+R119	
221	1 BX BM L	10	ETC CE Source4 19deg 575w	SHIN U		L719+R132	
222	1 BX BM L	11	ETC CE Source4 19deg 575w	SHIN D		L719+R132	
223	1 BM R	17	ETC CE Source4 19deg 575w	SHIN D		L719+R132	
224	1 BM R	18	ETC CE Source4 19deg 575w	SHIN U		L719+R132	

Chan	Position	U#	Instrument Type & Load	Purpose	Accessory	Color	Gobo
225	2 BM R	4	ETC CE Source4 19deg 575w	SHIN D		L719+R132	
226	3 BM R	7	ETC CE Source4 19deg 575w	SHIN D		L719+R132	
227	3 BM R	8	ETC CE Source4 19deg 575w	SHIN U		L719+R132	
228	4 BM R	7	ETC CE Source4 19deg 575w	SHIN D		L719+R132	
229	4 BM R	8	ETC CE Source4 19deg 575w	SHIN U		L719+R132	
230	5 BM R	4	ETC CE Source4 19deg 575w	SHIN U		L719+R132	
231	1 BX BM L	10	ETC CE Source4 19deg 575w	SHIN D		L719+R132	
232	1 BX BM L	11	ETC CE Source4 19deg 575w	SHIN U		L719+R132	
233	1 BM L	17	ETC CE Source4 19deg 575w	SHIN D		L719+R132	
234	1 BM L	18	ETC CE Source4 19deg 575w	SHIN U		L719+R132	
235	2 BM L	4	ETC CE Source4 19deg 575w	SHIN D		L719+R132	
236	3 BM L	7	ETC CE Source4 19deg 575w	SHIN D		L719+R132	
237	3 BM L	8	ETC CE Source4 19deg 575w	SHIN U		L719+R132	
238	4 BM L	7	ETC CE Source4 19deg 575w	SHIN D		L719+R132	
239	4 BM L	8	ETC CE Source4 19deg 575w	SHIN U		L719+R132	
240	5 BM L	4	ETC CE Source4 19deg 575w	SHIN U		L719+R132	
241	1 BX BM L	8	ETC Source4 LEDLS 19deg 117w	Mid U		R132	
242	1 BX BM L	9	ETC Source4 LEDLS 19deg 117w	MID D		R132	
243	1 BM R	15	ETC Source4 LEDLS 19deg 117w	MID D		R132	
244	1 BM R	16	ETC Source4 LEDLS 19deg 117w	Mid U		R132	
245	2 BM R	3	ETC Source4 LEDLS 19deg 117w	MID D		R132	
246	3 BM R	5	ETC Source4 LEDLS 19deg 117w	MID D		R132	
247	3 BM R	6	ETC Source4 LEDLS 19deg 117w	Mid U		R132	
248	4 BM R	5	ETC Source4 LEDLS 19deg 117w	MID D		R132	
249	4 BM R	6	ETC Source4 LEDLS 19deg 117w	Mid U		R132	
250	5 BM R	3	ETC Source4 LEDLS 19deg 117w	Mid U		R132	
251	1 BX BM L	8	ETC Source4 LEDLS 19deg 117w	MID D		R132	
252	1 BX BM L	9	ETC Source4 LEDLS 19deg 117w	Mid U		R132	
253	1 BM L	15	ETC Source4 LEDLS 19deg 117w	MID D		R132	

Chan	Position	U#	Instrument Type & Load	Purpose	Accessory	Color	Gobo
254	1 BM L	16	ETC Source4 LEDLS 19deg 117w	Mid U		<input type="radio"/> R132	
255	2 BM L	3	ETC Source4 LEDLS 19deg 117w	MID D		<input type="radio"/> R132	
256	3 BM L	5	ETC Source4 LEDLS 19deg 117w	MID D		<input type="radio"/> R132	
257	3 BM L	6	ETC Source4 LEDLS 19deg 117w	Mid U		<input type="radio"/> R132	
258	4 BM L	5	ETC Source4 LEDLS 19deg 117w	MID D		<input type="radio"/> R132	
259	4 BM L	6	ETC Source4 LEDLS 19deg 117w	Mid U		<input type="radio"/> R132	
260	5 BM L	3	ETC Source4 LEDLS 19deg 117w	Mid U		<input type="radio"/> R132	
261	1 BX BM L	6	ETC Source4 LEDLS 19deg 117w	HH U		<input type="radio"/> R132	
262	1 BX BM L	7	ETC Source4 LEDLS 19deg 117w	HH D		<input type="radio"/> R132	
263	1 BM R	13	ETC Source4 LEDLS 19deg 117w	HH D		<input type="radio"/> R132	
264	1 BM R	14	ETC Source4 LEDLS 19deg 117w	HH U		<input type="radio"/> R132	
265	2 BM R	2	ETC Source4 LEDLS 19deg 117w	HH D		<input type="radio"/> R132	
266	3 BM R	3	ETC Source4 LEDLS 19deg 117w	HH D		<input type="radio"/> R132	
267	3 BM R	4	ETC Source4 LEDLS 19deg 117w	HH U		<input type="radio"/> R132	
268	4 BM R	3	ETC Source4 LEDLS 19deg 117w	HH D		<input type="radio"/> R132	
269	4 BM R	4	ETC Source4 LEDLS 19deg 117w	HH U		<input type="radio"/> R132	
270	5 BM R	2	ETC Source4 LEDLS 19deg 117w	HH U		<input type="radio"/> R132	
271	1 BX BM L	6	ETC Source4 LEDLS 19deg 117w	HH D		<input type="radio"/> R132	
272	1 BX BM L	7	ETC Source4 LEDLS 19deg 117w	HH U		<input type="radio"/> R132	
273	1 BM L	13	ETC Source4 LEDLS 19deg 117w	HH D		<input type="radio"/> R132	
274	1 BM L	14	ETC Source4 LEDLS 19deg 117w	HH U		<input type="radio"/> R132	
275	2 BM L	2	ETC Source4 LEDLS 19deg 117w	HH D		<input type="radio"/> R132	
276	3 BM L	3	ETC Source4 LEDLS 19deg 117w	HH D		<input type="radio"/> R132	
277	3 BM L	4	ETC Source4 LEDLS 19deg 117w	HH U		<input type="radio"/> R132	
278	4 BM L	3	ETC Source4 LEDLS 19deg 117w	HH D		<input type="radio"/> R132	
279	4 BM L	4	ETC Source4 LEDLS 19deg 117w	HH U		<input type="radio"/> R132	
280	5 BM L	2	ETC Source4 LEDLS 19deg 117w	HH U		<input type="radio"/> R132	
281	1 BX BM L	4	ETC Source4 26deg 750W 750w	Wall Wash T		<input type="radio"/> R119	
282	1 BX BM L	5	ETC Source4 26deg 750W 750w	Wall Wash T		<input type="radio"/> R119	

Chan	Position	U#	Instrument Type & Load	Purpose	Accessory	Color	Gobo
283	1 BM R	11	ETC CE Source4 19deg 575w	Temp D		R119	G600
284	1 BM R	12	ETC CE Source4 19deg 575w	Temp U		R119	G600
285	2 BM R	1	ETC CE Source4 19deg 575w	Temp D		R119	G600
286	3 BM R	1	ETC CE Source4 19deg 575w	Temp D		R119	G600
287	3 BM R	2	ETC CE Source4 19deg 575w	Temp U		R119	G600
288	4 BM R	1	ETC CE Source4 19deg 575w	Temp D		R119	G600
289	4 BM R	2	ETC CE Source4 19deg 575w	Temp U		R119	G600
290	5 BM R	1	ETC CE Source4 19deg 575w	Temp U		R119	G600
291	1 BX BM L	4	ETC Source4 26deg 750W 750w	Wall Wash T		R119	G598
292	1 BX BM L	5	ETC Source4 26deg 750W 750w	Wall Wash T		R119	G598
293	1 BM L	11	ETC CE Source4 19deg 575w	Temp D		R119	G600
294	1 BM L	12	ETC CE Source4 19deg 575w	Temp U		R119	G600
295	2 BM L	1	ETC CE Source4 19deg 575w	Temp D		R119	G600
296	3 BM L	1	ETC CE Source4 19deg 575w	Temp D		R119	G600
297	3 BM L	2	ETC CE Source4 19deg 575w	Temp U		R119	G600
298	4 BM L	1	ETC CE Source4 19deg 575w	Temp D		R119	G600
299	4 BM L	2	ETC CE Source4 19deg 575w	Temp U		R119	G600
300	5 BM L	1	ETC CE Source4 19deg 575w	Temp U		R119	G600
301	1 BM R	9	ETC Source 4 26deg 575w	Wall Wash C		L161+R104	
302	1 BM R	10	ETC Source 4 26deg 575w	Wall Wash C		L161+R104	
303	1 BM L	9	ETC Source 4 26deg 575w	Wall Wash C		L161+R104	
304	1 BM L	10	ETC Source 4 26deg 575w	Wall Wash C		L161+R104	
305	1 BM R	7	ETC Source 4 26deg 575w	Wall Wash W		R316+R104	
306	1 BM R	8	ETC Source 4 26deg 575w	Wall Wash W		R316+R104	
307	1 BM L	7	ETC Source 4 26deg 575w	Wall Wash W		R316+R104	
308	1 BM L	8	ETC Source 4 26deg 575w	Wall Wash W		R316+R104	
309	1 BM R	5	ETC Source 4 26deg 575w	Wall Wash P		L192+R104	
310	1 BM R	6	ETC Source 4 26deg 575w	Wall Wash P		L192+R104	

Chan	Position	U#	Instrument Type & Load	Purpose	Accessory	Color	Gobo
311	1 BM L	5	ETC Source 4 26deg 575w	Wall Wash P		L192+R104	
312	1 BM L	6	ETC Source 4 26deg 575w	Wall Wash P		L192+R104	
313	1 BX BM L	2	ETC Source 4 26deg 575w	Practical Fill		R08+R132	
314	1 BX BM L	3	ETC Source 4 26deg 575w	Practical Fill		R08+R132	
315	1 BM R	3	ETC Source4 26deg 750W 750w	Wall Wash T		R119	G598
316	1 BM R	4	ETC Source4 26deg 750W 750w	Wall Wash T		R119	G598
317	1 BX BM L	2	ETC Source 4 26deg 575w	Practical Fill		R08+R132	
318	1 BX BM L	3	ETC Source 4 26deg 575w	Practical Fill		R08+R132	
319	1 BM L	3	ETC Source4 26deg 750W 750w	Wall Wash T		R119	G598
320	1 BM L	4	ETC Source4 26deg 750W 750w	Wall Wash T		R119	G598
321	2 BX BM R	1	ETC Source4 LEDLS 19deg 117w	SR Diag Tone	6.25" TOP HAT	R119	
322	2 BX BM R	2	ETC Source4 LEDLS 19deg 117w	SR Diag Tone	6.25" TOP HAT	R119	
323	2 BX BM R	3	ETC Source4 LEDLS 19deg 117w	SR Diag Tone	6.25" TOP HAT	R119	
324	2 BX BM R	4	ETC Source4 LEDLS 19deg 117w	SR Diag Tone	6.25" TOP HAT	R119	
325	2 BX BM R	1	ETC Source4 LEDLS 19deg 117w	SR Diag Tone	6.25" TOP HAT	R119	
326	2 BX BM R	2	ETC Source4 LEDLS 19deg 117w	SR Diag Tone	6.25" TOP HAT	R119	
327	2 BX BM R	4	ETC Source4 LEDLS 19deg 117w	SR Diag Tone	6.25" TOP HAT	R119	
328	2 BX BM R	6	ETC Source4 LEDLS 19deg 117w	SR Diag Tone	6.25" TOP HAT	R119	
329	2 BX BM L	1	ETC Source4 LEDLS 19deg 117w	SL Diag Tone	6.25" TOP HAT	R119	
330	2 BX BM L	2	ETC Source4 LEDLS 19deg 117w	SL Diag Tone	6.25" TOP HAT	R119	
331	2 BX BM L	3	ETC Source4 LEDLS 19deg 117w	SL Diag Tone	6.25" TOP HAT	R119	
332	2 BX BM L	4	ETC Source4 LEDLS 19deg 117w	SL Diag Tone	6.25" TOP HAT	R119	
333	2 BX BM L	1	ETC Source4 LEDLS 19deg 117w	SL Diag Tone	6.25" TOP HAT	R119	
334	2 BX BM L	2	ETC Source4 LEDLS 19deg 117w	SL Diag Tone	6.25" TOP HAT	R119	

Chan	Position	U#	Instrument Type & Load	Purpose	Accessory	Color	Gobo
335	2 BX BM L	4	ETC Source4 LEDLS 19deg 117w	SL Diag Tone	6.25" TOP HAT	R119	
336	2 BX BM L	6	ETC Source4 LEDLS 19deg 117w	SL Diag Tone	6.25" TOP HAT	R119	
341	Balcony Rail	10	ETC Source4 LEDLS 26deg 117w	Low Tone	6.25" TOP HAT	R132	
342	Balcony Rail	9	ETC Source4 LEDLS 26deg 117w	Low Tone	6.25" TOP HAT	R132	
343	Balcony Rail	8	ETC Source4 LEDLS 26deg 117w	Low Tone	6.25" TOP HAT	R132	
344	Balcony Rail	7	ETC Source4 LEDLS 26deg 117w	Low Tone	6.25" TOP HAT	R132	
345	Balcony Rail	6	ETC Source4 LEDLS 26deg 117w	Low Tone	6.25" TOP HAT	R132	
346	Balcony Rail	5	ETC Source4 LEDLS 26deg 117w	Low Tone	6.25" TOP HAT	R132	
347	Balcony Rail	4	ETC Source4 LEDLS 26deg 117w	Low Tone	6.25" TOP HAT	R132	
348	Balcony Rail	3	ETC Source4 LEDLS 26deg 117w	Low Tone	6.25" TOP HAT	R132	
349	Balcony Rail	2	ETC Source4 LEDLS 26deg 117w	Low Tone	6.25" TOP HAT	R132	
350	Balcony Rail	1	ETC Source4 LEDLS 26deg 117w	Low Tone	6.25" TOP HAT	R132	
351	2 BX BM R	3	ETC Source4 26deg 750W 750w	Curtain Warmer	6.25" TOP HAT	R4690+R100	
352	2 BX BM R	5	ETC Source4 26deg 750W 750w	Curtain Warmer	6.25" TOP HAT	R4690+R100	
353	2 BX BM L	3	ETC Source4 26deg 750W 750w	Curtain Warmer	6.25" TOP HAT	R4690+R100	
354	2 BX BM L	5	ETC Source4 26deg 750W 750w	Curtain Warmer	6.25" TOP HAT	R4690+R100	
357	12 Electric	8	PAR 64 MFL 1kW	Statue SP F/ L R		R3407+R104	
358	12 Electric	4	PAR 64 MFL 1kW	Statue SP F/ L L		R3407+R104	
359	14 Electric	10	PAR 64 MFL 1kW	Statue SP BX R		R3407+R104	
360	14 Electric	6	PAR 64 MFL 1kW	Statue SP BX L		R3407+R104	
361	11 Electric	6	ETC CE Source4 19deg 575w	SR Door BX C		L200+R119	
362	11 Electric	4	ETC CE Source4 19deg 575w	SL Door BX C		L200+R119	
363	1 Taildown L	7	ETC CE Source4 19deg 575w	Door C Diag		L200+R119	
364	2 Taildown L	7	ETC CE Source4 19deg 575w	Door C Diag		L200+R119	
365	1 Taildown L	9	ETC CE Source4 19deg 575w	Door C Diag		L201+R119	

Chan	Position	U#	Instrument Type & Load	Purpose	Accessory	Color	Gobo
366	2 Taildown L	9	ETC CE Source4 19deg 575w	Door C Diag		L201+R119	
367	1 Taildown L	5	ETC CE Source4 19deg 575w	Door C Diag		L202+R119	
368	2 Taildown L	5	ETC CE Source4 19deg 575w	Door C Diag		L202+R119	
369	1 Taildown L	7	ETC CE Source4 19deg 575w	Door C Diag		L203+R119	
370	2 Taildown L	7	ETC CE Source4 19deg 575w	Door C Diag		L203+R119	
371	1 Taildown L	3	ETC CE Source4 19deg 575w	Door C Diag		L200+R119	
372	2 Taildown L	3	ETC CE Source4 19deg 575w	Door C Diag		L200+R119	
373	1 Taildown L	5	ETC CE Source4 19deg 575w	Door C Diag		L200+R119	
374	2 Taildown L	5	ETC CE Source4 19deg 575w	Door C Diag		L200+R119	
375	1 Taildown L	1	ETC CE Source4 19deg 575w	Window C		L200+R119	
376	2 Taildown L	1	ETC CE Source4 19deg 575w	Window C		L200+R119	
377	1 Taildown L	1	ETC CE Source4 19deg 575w	Window C		L200+R119	
378	2 Taildown L	1	ETC CE Source4 19deg 575w	Window C		L200+R119	
381	11 Electric	8	ETC CE Source4 19deg 575w	SR Door BX W		R318+R119	
382	11 Electric	2	ETC CE Source4 19deg 575w	SL Door BX W		R318+R119	
383	1 Taildown L	8	ETC CE Source4 19deg 575w	Door W Diag		R318+R119	
384	2 Taildown L	8	ETC CE Source4 19deg 575w	Door W Diag		R318+R119	
385	1 Taildown L	10	ETC CE Source4 19deg 575w	Door W Diag		R3411+R119	
386	2 Taildown L	10	ETC CE Source4 19deg 575w	Door W Diag		R3411+R119	
387	1 Taildown L	6	ETC CE Source4 19deg 575w	Door W Diag		R3408+R119	
388	2 Taildown L	6	ETC CE Source4 19deg 575w	Door W Diag		R3408+R119	
389	1 Taildown L	8	ETC CE Source4 19deg 575w	Door W Diag		R3409+R119	
390	2 Taildown L	8	ETC CE Source4 19deg 575w	Door W Diag		R3409+R119	
391	1 Taildown L	4	ETC CE Source4 19deg 575w	Door W Diag		R318+R119	
392	2 Taildown L	4	ETC CE Source4 19deg 575w	Door W Diag		R318+R119	
393	1 Taildown L	6	ETC CE Source4 19deg 575w	Door W Diag		R318+R119	
394	2 Taildown L	6	ETC CE Source4 19deg 575w	Door W Diag		R318+R119	
395	1 Taildown L	2	ETC CE Source4 19deg 575w	Window W		R318+R119	

Chan	Position	U#	Instrument Type & Load	Purpose	Accessory	Color	Gobo
396	2 Taildown L	2	ETC CE Source4 19deg 575w	Window W		R318+R119	
397	1 Taildown L	2	ETC CE Source4 19deg 575w	Window W		R318+R119	
398	2 Taildown L	2	ETC CE Source4 19deg 575w	Window W		R318+R119	
401	6 BM R	A3	Altman Zip Strip 3 Circuit 3w	Wall Scrape		R3410	
402	6 BM R	A2	Altman Zip Strip 3 Circuit 3w	Wall Scrape		R3410	
403	6 BM R	A1	Altman Zip Strip 3 Circuit 3w	Wall Scrape		R3410	
404	6 BM R	B3	Altman Zip Strip 3 Circuit 3w	Wall Scrape		R3410	
405	6 BM R	B2	Altman Zip Strip 3 Circuit 3w	Wall Scrape		R3410	
406	6 BM R	B1	Altman Zip Strip 3 Circuit 3w	Wall Scrape		R3410	
407	6 BM R	C3	Altman Zip Strip 3 Circuit 3w	Wall Scrape		R3410	
408	6 BM R	C2	Altman Zip Strip 3 Circuit 3w	Wall Scrape		R3410	
409	6 BM R	C1	Altman Zip Strip 3 Circuit 3w	Wall Scrape		R3410	
410	6 BM L	A1	Altman Zip Strip 3 Circuit 3w	Wall Scrape		R3410	
411	6 BM L	A2	Altman Zip Strip 3 Circuit 3w	Wall Scrape		R3410	
412	6 BM L	A3	Altman Zip Strip 3 Circuit 3w	Wall Scrape		R3410	
413	6 BM L	B1	Altman Zip Strip 3 Circuit 3w	Wall Scrape		R3410	
414	6 BM L	B2	Altman Zip Strip 3 Circuit 3w	Wall Scrape		R3410	
415	6 BM L	B3	Altman Zip Strip 3 Circuit 3w	Wall Scrape		R3410	
416	6 BM L	C1	Altman Zip Strip 3 Circuit 3w	Wall Scrape		R3410	
417	6 BM L	C2	Altman Zip Strip 3 Circuit 3w	Wall Scrape		R3410	
418	6 BM L	C3	Altman Zip Strip 3 Circuit 3w	Wall Scrape		R3410	
420	Deck	11	PAR16 BIRDIE ENH 250w	Footlights		Open	
421	Deck	10	PAR16 BIRDIE ENH 250w	Footlights		Open	
422	Deck	9	PAR16 BIRDIE ENH 250w	Footlights		Open	
423	Deck	8	PAR16 BIRDIE ENH 250w	Footlights		Open	
425	Deck	6	PAR16 BIRDIE ENH 250w	Footlights		Open	
426	Deck	5	PAR16 BIRDIE ENH 250w	Footlights		Open	
427	Deck	4	PAR16 BIRDIE ENH 250w	Footlights		Open	
429	Deck	2	PAR16 BIRDIE ENH 250w	Footlights		Open	

Chan	Position	U#	Instrument Type & Load	Purpose	Accessory	Color	Gobo
430	Deck	1	PAR16 BIRDIE ENH 250w	Footlights		<input type="radio"/> Open	
431	8 Electric	H3	3 CELL SKY CYC 1kW	US Door Cyc		<input checked="" type="radio"/> R3407	
432	8 Electric	G3	3 CELL SKY CYC 1kW	US Door Cyc		<input checked="" type="radio"/> L283	
433	8 Electric	F3	3 CELL SKY CYC 1kW	US Door Cyc		<input checked="" type="radio"/> L283	
434	8 Electric	E3	3 CELL SKY CYC 1kW	US Door Cyc		<input checked="" type="radio"/> L283	
435	8 Electric	D3	3 CELL SKY CYC 1kW	US Door Cyc		<input checked="" type="radio"/> L283	
436	8 Electric	C3	3 CELL SKY CYC 1kW	US Door Cyc		<input checked="" type="radio"/> L283	
437	8 Electric	B3	3 CELL SKY CYC 1kW	US Door Cyc		<input checked="" type="radio"/> L283	
438	8 Electric	A3	3 CELL SKY CYC 1kW	US Door Cyc		<input checked="" type="radio"/> L283	
439	8 Electric	H2	3 CELL SKY CYC 1kW	US Door Cyc		<input checked="" type="radio"/> R3407	
440	8 Electric	G2	3 CELL SKY CYC 1kW	US Door Cyc		<input checked="" type="radio"/> R3407	
441	8 Electric	F2	3 CELL SKY CYC 1kW	US Door Cyc		<input checked="" type="radio"/> R3407	
442	8 Electric	E2	3 CELL SKY CYC 1kW	US Door Cyc		<input checked="" type="radio"/> R3407	
443	8 Electric	D2	3 CELL SKY CYC 1kW	US Door Cyc		<input checked="" type="radio"/> R3407	
444	8 Electric	C2	3 CELL SKY CYC 1kW	US Door Cyc		<input checked="" type="radio"/> R3407	
445	8 Electric	B2	3 CELL SKY CYC 1kW	US Door Cyc		<input checked="" type="radio"/> R3407	
446	8 Electric	A2	3 CELL SKY CYC 1kW	US Door Cyc		<input checked="" type="radio"/> R3407	
447	8 Electric	H1	3 CELL SKY CYC 1kW	US Door Cyc		<input checked="" type="radio"/> R34	
448	8 Electric	G1	3 CELL SKY CYC 1kW	US Door Cyc		<input checked="" type="radio"/> R34	
449	8 Electric	F1	3 CELL SKY CYC 1kW	US Door Cyc		<input checked="" type="radio"/> R34	
450	8 Electric	E1	3 CELL SKY CYC 1kW	US Door Cyc		<input checked="" type="radio"/> R34	
451	8 Electric	D1	3 CELL SKY CYC 1kW	US Door Cyc		<input checked="" type="radio"/> R34	
452	8 Electric	C1	3 CELL SKY CYC 1kW	US Door Cyc		<input checked="" type="radio"/> R34	
453	8 Electric	B1	3 CELL SKY CYC 1kW	US Door Cyc		<input checked="" type="radio"/> R34	
454	8 Electric	A1	3 CELL SKY CYC 1kW	US Door Cyc		<input checked="" type="radio"/> R34	
461	DS Chandelier	8	LED WW E26 Bulb	Chandelier		<input type="radio"/> RGB WW	
462	DS Chandelier	9	LED WW E26 Bulb	Chandelier		<input type="radio"/> RGB WW	
463	DS Chandelier	10	LED WW E26 Bulb	Chandelier		<input type="radio"/> RGB WW	
464	DS Chandelier	11	LED WW E26 Bulb	Chandelier		<input type="radio"/> RGB WW	

Chan	Position	U#	Instrument Type & Load	Purpose	Accessory	Color	Gobo
465	DS Chandelier	12		Chandelier		<input type="radio"/> RGB WW	
466	DS Chandelier	13	LED WW E26 Bulb	Chandelier		<input type="radio"/> RGB WW	
467	DS Chandelier	14	LED WW E26 Bulb	Chandelier		<input type="radio"/> RGB WW	
468	DS Chandelier	1	LED WW E26 Bulb	Chandelier		<input type="radio"/> RGB WW	
469	DS Chandelier	2	LED WW E26 Bulb	Chandelier		<input type="radio"/> RGB WW	
470	DS Chandelier	3	LED WW E26 Bulb	Chandelier		<input type="radio"/> RGB WW	
471	DS Chandelier	4	LED WW E26 Bulb	Chandelier		<input type="radio"/> RGB WW	
472	DS Chandelier	5	LED WW E26 Bulb	Chandelier		<input type="radio"/> RGB WW	
473	DS Chandelier	6	LED WW E26 Bulb	Chandelier		<input type="radio"/> RGB WW	
474	DS Chandelier	7	LED WW E26 Bulb	Chandelier		<input type="radio"/> RGB WW	
501	Baseboard	1	LED Tape RGB CW	Baseboard		<input type="radio"/> RGB CW	
502	Baseboard	2	LED Tape RGB CW	Baseboard		<input type="radio"/> RGB CW	
503	Baseboard	3	LED Tape RGB CW	Baseboard		<input type="radio"/> RGB CW	
504	Baseboard	4	LED Tape RGB CW	Baseboard		<input type="radio"/> RGB CW	
505	Baseboard	5	LED Tape RGB CW	Baseboard		<input type="radio"/> RGB CW	
506	Baseboard	6	LED Tape RGB CW	Baseboard		<input type="radio"/> RGB CW	
507	Baseboard	7	LED Tape RGB CW	Baseboard		<input type="radio"/> RGB CW	
508	Baseboard	8	LED Tape RGB CW	Baseboard		<input type="radio"/> RGB CW	
509	Baseboard	9	LED Tape RGB CW	Baseboard		<input type="radio"/> RGB CW	
511	Crown	1	LED Tape RGB CW	Crown		<input type="radio"/> RGB CW	
512	Crown	2	LED Tape RGB CW	Crown		<input type="radio"/> RGB CW	
513	Crown	3	LED Tape RGB CW	Crown		<input type="radio"/> RGB CW	
514	Crown	4	LED Tape RGB CW	Crown		<input type="radio"/> RGB CW	
515	Crown	5	LED Tape RGB CW	Crown		<input type="radio"/> RGB CW	
516	Crown	6	LED Tape RGB CW	Crown		<input type="radio"/> RGB CW	
517	Crown	7	LED Tape RGB CW	Crown		<input type="radio"/> RGB CW	
518	Crown	8	LED Tape RGB CW	Crown		<input type="radio"/> RGB CW	
519	Crown	9	LED Tape RGB CW	Crown		<input type="radio"/> RGB CW	
601	Portal 1	1	LED WW E26 Bulb	Portal 1 Bulb		<input type="radio"/> RGB WW	

Chan	Position	U#	Instrument Type & Load	Purpose	Accessory	Color	Gobo
602	Portal 1	2	LED WW E26 Bulb	Portal 1 Bulb		<input type="radio"/> RGB WW	
603	Portal 1	3	LED WW E26 Bulb	Portal 1 Bulb		<input type="radio"/> RGB WW	
604	Portal 1	4	LED WW E26 Bulb	Portal 1 Bulb		<input type="radio"/> RGB WW	
605	Portal 1	5	LED WW E26 Bulb	Portal 1 Bulb		<input type="radio"/> RGB WW	
607	Portal 1	6	LED WW E26 Bulb	Portal 1 Bulb		<input type="radio"/> RGB WW	
608	Portal 1	7	LED WW E26 Bulb	Portal 1 Bulb		<input type="radio"/> RGB WW	
609	Portal 1	8	LED WW E26 Bulb	Portal 1 Bulb		<input type="radio"/> RGB WW	
610	Portal 1	9	LED WW E26 Bulb	Portal 1 Bulb		<input type="radio"/> RGB WW	
611	Portal 1	10	LED WW E26 Bulb	Portal 1 Bulb		<input type="radio"/> RGB WW	
612	Portal 1	11	LED WW E26 Bulb	Portal 1 Bulb		<input type="radio"/> RGB WW	
613	Portal 1	12	LED WW E26 Bulb	Portal 1 Bulb		<input type="radio"/> RGB WW	
614	Portal 1	13	LED WW E26 Bulb	Portal 1 Bulb		<input type="radio"/> RGB WW	
615	Portal 1	14	LED WW E26 Bulb	Portal 1 Bulb		<input type="radio"/> RGB WW	
616	Portal 1	15	LED WW E26 Bulb	Portal 1 Bulb		<input type="radio"/> RGB WW	
617	Portal 1	16	LED WW E26 Bulb	Portal 1 Bulb		<input type="radio"/> RGB WW	
618	Portal 1	17	LED WW E26 Bulb	Portal 1 Bulb		<input type="radio"/> RGB WW	
619	Portal 1	18	LED WW E26 Bulb	Portal 1 Bulb		<input type="radio"/> RGB WW	
620	Portal 1	19	LED WW E26 Bulb	Portal 1 Bulb		<input type="radio"/> RGB WW	
621	Portal 1	20	LED WW E26 Bulb	Portal 1 Bulb		<input type="radio"/> RGB WW	
622	Portal 1	21	LED WW E26 Bulb	Portal 1 Bulb		<input type="radio"/> RGB WW	
623	Portal 1	22	LED WW E26 Bulb	Portal 1 Bulb		<input type="radio"/> RGB WW	
624	Portal 1	23	LED WW E26 Bulb	Portal 1 Bulb		<input type="radio"/> RGB WW	
625	Portal 1	24	LED WW E26 Bulb	Portal 1 Bulb		<input type="radio"/> RGB WW	
626	Portal 1	25	LED WW E26 Bulb	Portal 1 Bulb		<input type="radio"/> RGB WW	
627	Portal 1	26	LED WW E26 Bulb	Portal 1 Bulb		<input type="radio"/> RGB WW	
628	Portal 1	27	LED WW E26 Bulb	Portal 1 Bulb		<input type="radio"/> RGB WW	
629	Portal 1	28	LED WW E26 Bulb	Portal 1 Bulb		<input type="radio"/> RGB WW	
630	Portal 1	29	LED WW E26 Bulb	Portal 1 Bulb		<input type="radio"/> RGB WW	
631	Portal 1	30	LED WW E26 Bulb	Portal 1 Bulb		<input type="radio"/> RGB WW	

Chan	Position	U#	Instrument Type & Load	Purpose	Accessory	Color	Gobo
632	Portal 1	31	LED WW E26 Bulb	Portal 1 Bulb		<input type="radio"/> RGB WW	
633	Portal 1	32	LED WW E26 Bulb	Portal 1 Bulb		<input type="radio"/> RGB WW	
634	Portal 1	33	LED WW E26 Bulb	Portal 1 Bulb		<input type="radio"/> RGB WW	
635	Portal 1	34	LED WW E26 Bulb	Portal 1 Bulb		<input type="radio"/> RGB WW	
636	Portal 1	35	LED WW E26 Bulb	Portal 1 Bulb		<input type="radio"/> RGB WW	
637	Portal 1	36	LED WW E26 Bulb	Portal 1 Bulb		<input type="radio"/> RGB WW	
641	Portal 2	1	LED WW E26 Bulb	Portal 1 Bulb		<input type="radio"/> RGB WW	
642	Portal 2	2	LED WW E26 Bulb	Portal 1 Bulb		<input type="radio"/> RGB WW	
643	Portal 2	3	LED WW E26 Bulb	Portal 1 Bulb		<input type="radio"/> RGB WW	
644	Portal 2	4	LED WW E26 Bulb	Portal 1 Bulb		<input type="radio"/> RGB WW	
645	Portal 2	5	LED WW E26 Bulb	Portal 1 Bulb		<input type="radio"/> RGB WW	
646	Portal 2	6	LED WW E26 Bulb	Portal 1 Bulb		<input type="radio"/> RGB WW	
647	Portal 2	7	LED WW E26 Bulb	Portal 1 Bulb		<input type="radio"/> RGB WW	
648	Portal 2	8	LED WW E26 Bulb	Portal 1 Bulb		<input type="radio"/> RGB WW	
649	Portal 2	9	LED WW E26 Bulb	Portal 1 Bulb		<input type="radio"/> RGB WW	
650	Portal 2	10	LED WW E26 Bulb	Portal 1 Bulb		<input type="radio"/> RGB WW	
651	Portal 2	11	LED WW E26 Bulb	Portal 1 Bulb		<input type="radio"/> RGB WW	
652	Portal 2	12	LED WW E26 Bulb	Portal 1 Bulb		<input type="radio"/> RGB WW	
653	Portal 2	13	LED WW E26 Bulb	Portal 1 Bulb		<input type="radio"/> RGB WW	
654	Portal 2	14	LED WW E26 Bulb	Portal 1 Bulb		<input type="radio"/> RGB WW	
655	Portal 2	15	LED WW E26 Bulb	Portal 1 Bulb		<input type="radio"/> RGB WW	
656	Portal 2	16	LED WW E26 Bulb	Portal 1 Bulb		<input type="radio"/> RGB WW	
657	Portal 2	17	LED WW E26 Bulb	Portal 1 Bulb		<input type="radio"/> RGB WW	
658	Portal 2	18	LED WW E26 Bulb	Portal 1 Bulb		<input type="radio"/> RGB WW	
659	Portal 2	19	LED WW E26 Bulb	Portal 1 Bulb		<input type="radio"/> RGB WW	
660	Portal 2	20	LED WW E26 Bulb	Portal 1 Bulb		<input type="radio"/> RGB WW	
661	Portal 2	21	LED WW E26 Bulb	Portal 1 Bulb		<input type="radio"/> RGB WW	
662	Portal 2	22	LED WW E26 Bulb	Portal 1 Bulb		<input type="radio"/> RGB WW	
663	Portal 2	23	LED WW E26 Bulb	Portal 1 Bulb		<input type="radio"/> RGB WW	

Chan	Position	U#	Instrument Type & Load	Purpose	Accessory	Color	Gobo
664	Portal 2	24	LED WW E26 Bulb	Portal 1 Bulb		<input type="radio"/> RGB WW	
665	Portal 2	25	LED WW E26 Bulb	Portal 1 Bulb		<input type="radio"/> RGB WW	
666	Portal 2	26	LED WW E26 Bulb	Portal 1 Bulb		<input type="radio"/> RGB WW	
667	Portal 2	27	LED WW E26 Bulb	Portal 1 Bulb		<input type="radio"/> RGB WW	
668	Portal 2	28	LED WW E26 Bulb	Portal 1 Bulb		<input type="radio"/> RGB WW	
669	Portal 2	29	LED WW E26 Bulb	Portal 1 Bulb		<input type="radio"/> RGB WW	
670	Portal 2	30	LED WW E26 Bulb	Portal 1 Bulb		<input type="radio"/> RGB WW	
671	Portal 2	31	LED WW E26 Bulb	Portal 1 Bulb		<input type="radio"/> RGB WW	
672	Portal 2	32	LED WW E26 Bulb	Portal 1 Bulb		<input type="radio"/> RGB WW	
673	Portal 2	33	LED WW E26 Bulb	Portal 1 Bulb		<input type="radio"/> RGB WW	
674	Portal 2	34	LED WW E26 Bulb	Portal 1 Bulb		<input type="radio"/> RGB WW	
675	Portal 2	35	LED WW E26 Bulb	Portal 1 Bulb		<input type="radio"/> RGB WW	
676	Portal 2	36	LED WW E26 Bulb	Portal 1 Bulb		<input type="radio"/> RGB WW	
677	Portal 2	37	LED WW E26 Bulb	Portal 1 Bulb		<input type="radio"/> RGB WW	
681	Portal 3	1	LED WW E26 Bulb	Portal 3 Bulb		<input type="radio"/> RGB WW	
682	Portal 3	2	LED WW E26 Bulb	Portal 3 Bulb		<input type="radio"/> RGB WW	
683	Portal 3	3	LED WW E26 Bulb	Portal 3 Bulb		<input type="radio"/> RGB WW	
684	Portal 3	4	LED WW E26 Bulb	Portal 3 Bulb		<input type="radio"/> RGB WW	
685	Portal 3	5	LED WW E26 Bulb	Portal 3 Bulb		<input type="radio"/> RGB WW	
686	Portal 3	6	LED WW E26 Bulb	Portal 3 Bulb		<input type="radio"/> RGB WW	
687	Portal 3	7	LED WW E26 Bulb	Portal 3 Bulb		<input type="radio"/> RGB WW	
688	Portal 3	8	LED WW E26 Bulb	Portal 3 Bulb		<input type="radio"/> RGB WW	
689	Portal 3	9	LED WW E26 Bulb	Portal 3 Bulb		<input type="radio"/> RGB WW	
690	Portal 3	10	LED WW E26 Bulb	Portal 3 Bulb		<input type="radio"/> RGB WW	
691	Portal 3	11	LED WW E26 Bulb	Portal 3 Bulb		<input type="radio"/> RGB WW	
692	Portal 3	12	LED WW E26 Bulb	Portal 3 Bulb		<input type="radio"/> RGB WW	
693	Portal 3	13	LED WW E26 Bulb	Portal 3 Bulb		<input type="radio"/> RGB WW	
694	Portal 3	14	LED WW E26 Bulb	Portal 3 Bulb		<input type="radio"/> RGB WW	
695	Portal 3	15	LED WW E26 Bulb	Portal 3 Bulb		<input type="radio"/> RGB WW	

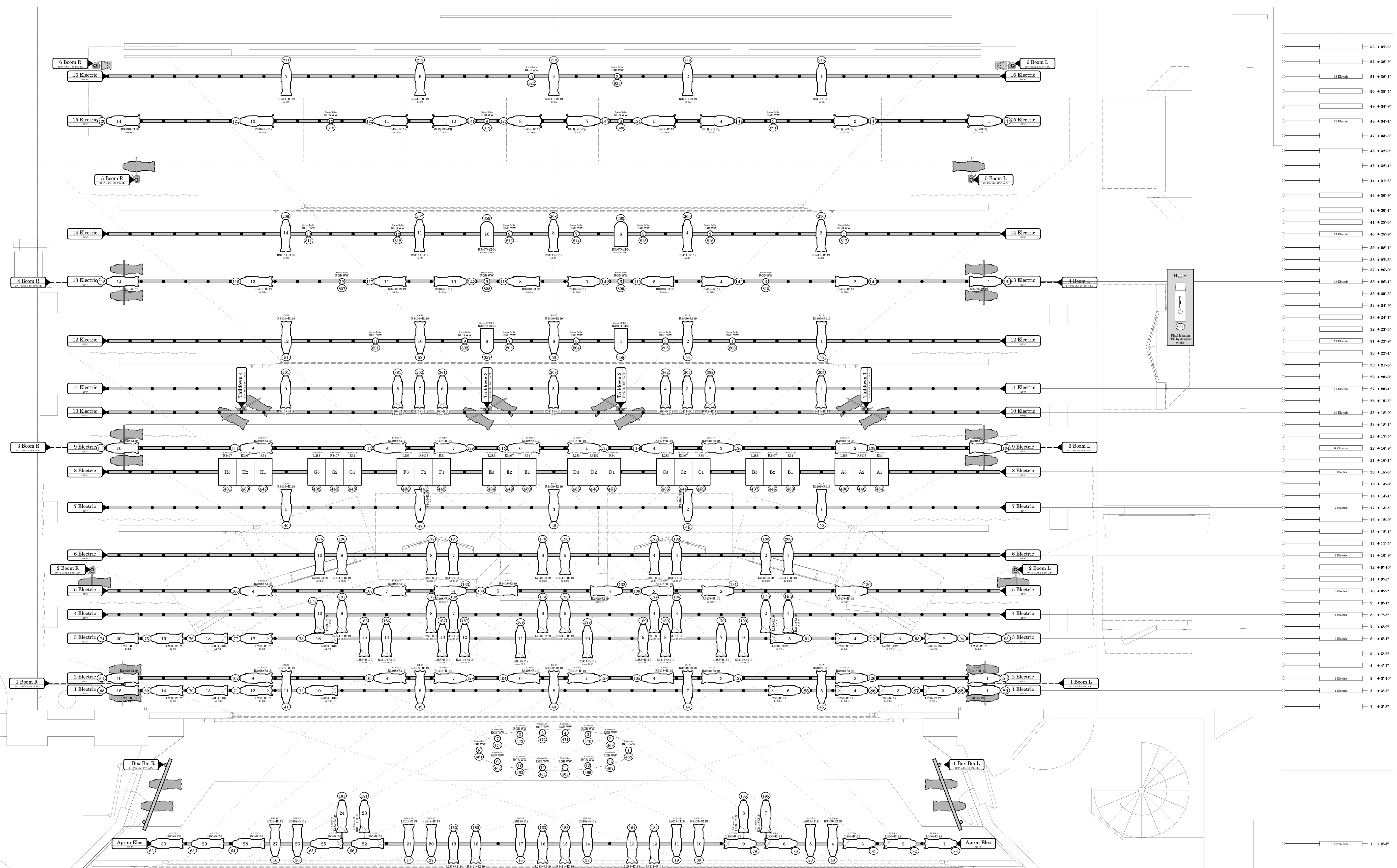
Chan	Position	U#	Instrument Type & Load	Purpose	Accessory	Color	Gobo
696	Portal 3	16	LED WW E26 Bulb	Portal 3 Bulb		<input type="radio"/> RGB WW	
697	Portal 3	17	LED WW E26 Bulb	Portal 3 Bulb		<input type="radio"/> RGB WW	
698	Portal 3	18	LED WW E26 Bulb	Portal 3 Bulb		<input type="radio"/> RGB WW	
699	Portal 3	19	LED WW E26 Bulb	Portal 3 Bulb		<input type="radio"/> RGB WW	
700	Portal 3	20	LED WW E26 Bulb	Portal 3 Bulb		<input type="radio"/> RGB WW	
701	Portal 3	21	LED WW E26 Bulb	Portal 3 Bulb		<input type="radio"/> RGB WW	
702	Portal 3	22	LED WW E26 Bulb	Portal 3 Bulb		<input type="radio"/> RGB WW	
703	Portal 3	23	LED WW E26 Bulb	Portal 3 Bulb		<input type="radio"/> RGB WW	
704	Portal 3	24	LED WW E26 Bulb	Portal 3 Bulb		<input type="radio"/> RGB WW	
705	Portal 3	25	LED WW E26 Bulb	Portal 3 Bulb		<input type="radio"/> RGB WW	
706	Portal 3	26	LED WW E26 Bulb	Portal 3 Bulb		<input type="radio"/> RGB WW	
707	Portal 3	27	LED WW E26 Bulb	Portal 3 Bulb		<input type="radio"/> RGB WW	
708	Portal 3	28	LED WW E26 Bulb	Portal 3 Bulb		<input type="radio"/> RGB WW	
709	Portal 3	29	LED WW E26 Bulb	Portal 3 Bulb		<input type="radio"/> RGB WW	
710	Portal 3	30	LED WW E26 Bulb	Portal 3 Bulb		<input type="radio"/> RGB WW	
711	Portal 3	31	LED WW E26 Bulb	Portal 3 Bulb		<input type="radio"/> RGB WW	
712	Portal 3	32	LED WW E26 Bulb	Portal 3 Bulb		<input type="radio"/> RGB WW	
713	Portal 3	33	LED WW E26 Bulb	Portal 3 Bulb		<input type="radio"/> RGB WW	
714	Portal 3	34	LED WW E26 Bulb	Portal 3 Bulb		<input type="radio"/> RGB WW	
715	Portal 3	35	LED WW E26 Bulb	Portal 3 Bulb		<input type="radio"/> RGB WW	
716	Portal 3	36	LED WW E26 Bulb	Portal 3 Bulb		<input type="radio"/> RGB WW	
717	Portal 3	37	LED WW E26 Bulb	Portal 3 Bulb		<input type="radio"/> RGB WW	
721	Portal 4	1	LED WW E26 Bulb	Portal 4 Bulb		<input type="radio"/> RGB WW	
722	Portal 4	2	LED WW E26 Bulb	Portal 4 Bulb		<input type="radio"/> RGB WW	
723	Portal 4	3	LED WW E26 Bulb	Portal 4 Bulb		<input type="radio"/> RGB WW	
724	Portal 4	4	LED WW E26 Bulb	Portal 4 Bulb		<input type="radio"/> RGB WW	
725	Portal 4	5	LED WW E26 Bulb	Portal 4 Bulb		<input type="radio"/> RGB WW	
726	Portal 4	6	LED WW E26 Bulb	Portal 4 Bulb		<input type="radio"/> RGB WW	
727	Portal 4	7	LED WW E26 Bulb	Portal 4 Bulb		<input type="radio"/> RGB WW	

Chan	Position	U#	Instrument Type & Load	Purpose	Accessory	Color	Gobo
728	Portal 4	8	LED WW E26 Bulb	Portal 4 Bulb		<input type="radio"/> RGB WW	
729	Portal 4	9	LED WW E26 Bulb	Portal 4 Bulb		<input type="radio"/> RGB WW	
730	Portal 4	10	LED WW E26 Bulb	Portal 4 Bulb		<input type="radio"/> RGB WW	
731	Portal 4	11	LED WW E26 Bulb	Portal 4 Bulb		<input type="radio"/> RGB WW	
732	Portal 4	12	LED WW E26 Bulb	Portal 4 Bulb		<input type="radio"/> RGB WW	
733	Portal 4	13	LED WW E26 Bulb	Portal 4 Bulb		<input type="radio"/> RGB WW	
734	Portal 4	14	LED WW E26 Bulb	Portal 4 Bulb		<input type="radio"/> RGB WW	
735	Portal 4	15	LED WW E26 Bulb	Portal 4 Bulb		<input type="radio"/> RGB WW	
736	Portal 4	16	LED WW E26 Bulb	Portal 4 Bulb		<input type="radio"/> RGB WW	
737	Portal 4	17	LED WW E26 Bulb	Portal 4 Bulb		<input type="radio"/> RGB WW	
738	Portal 4	18	LED WW E26 Bulb	Portal 4 Bulb		<input type="radio"/> RGB WW	
739	Portal 4	19	LED WW E26 Bulb	Portal 4 Bulb		<input type="radio"/> RGB WW	
740	Portal 4	20	LED WW E26 Bulb	Portal 4 Bulb		<input type="radio"/> RGB WW	
741	Portal 4	21	LED WW E26 Bulb	Portal 4 Bulb		<input type="radio"/> RGB WW	
742	Portal 4	22	LED WW E26 Bulb	Portal 4 Bulb		<input type="radio"/> RGB WW	
743	Portal 4	23	LED WW E26 Bulb	Portal 4 Bulb		<input type="radio"/> RGB WW	
744	Portal 4	24	LED WW E26 Bulb	Portal 4 Bulb		<input type="radio"/> RGB WW	
745	Portal 4	25	LED WW E26 Bulb	Portal 4 Bulb		<input type="radio"/> RGB WW	
746	Portal 4	26	LED WW E26 Bulb	Portal 4 Bulb		<input type="radio"/> RGB WW	
747	Portal 4	27	LED WW E26 Bulb	Portal 4 Bulb		<input type="radio"/> RGB WW	
748	Portal 4	28	LED WW E26 Bulb	Portal 4 Bulb		<input type="radio"/> RGB WW	
749	Portal 4	29	LED WW E26 Bulb	Portal 4 Bulb		<input type="radio"/> RGB WW	
750	Portal 4	30	LED WW E26 Bulb	Portal 4 Bulb		<input type="radio"/> RGB WW	
751	Portal 4	31	LED WW E26 Bulb	Portal 4 Bulb		<input type="radio"/> RGB WW	
752	Portal 4	32	LED WW E26 Bulb	Portal 4 Bulb		<input type="radio"/> RGB WW	
753	Portal 4	33	LED WW E26 Bulb	Portal 4 Bulb		<input type="radio"/> RGB WW	
754	Portal 4	34	LED WW E26 Bulb	Portal 4 Bulb		<input type="radio"/> RGB WW	
755	Portal 4	35	LED WW E26 Bulb	Portal 4 Bulb		<input type="radio"/> RGB WW	
756	Portal 4	36	LED WW E26 Bulb	Portal 4 Bulb		<input type="radio"/> RGB WW	

Chan	Position	U#	Instrument Type & Load	Purpose	Accessory	Color	Gobo
757	Portal 4	37	LED WW E26 Bulb	Portal 4 Bulb		<input type="radio"/> RGB WW	
761	Portal 5	1	LED WW E26 Bulb	Portal 5 Bulb		<input type="radio"/> RGB WW	
762	Portal 5	2	LED WW E26 Bulb	Portal 5 Bulb		<input type="radio"/> RGB WW	
763	Portal 5	3	LED WW E26 Bulb	Portal 5 Bulb		<input type="radio"/> RGB WW	
764	Portal 5	4	LED WW E26 Bulb	Portal 5 Bulb		<input type="radio"/> RGB WW	
765	Portal 5	5	LED WW E26 Bulb	Portal 5 Bulb		<input type="radio"/> RGB WW	
766	Portal 5	6	LED WW E26 Bulb	Portal 5 Bulb		<input type="radio"/> RGB WW	
767	Portal 5	7	LED WW E26 Bulb	Portal 5 Bulb		<input type="radio"/> RGB WW	
768	Portal 5	8	LED WW E26 Bulb	Portal 5 Bulb		<input type="radio"/> RGB WW	
769	Portal 5	9	LED WW E26 Bulb	Portal 5 Bulb		<input type="radio"/> RGB WW	
770	Portal 5	10	LED WW E26 Bulb	Portal 5 Bulb		<input type="radio"/> RGB WW	
771	Portal 5	11	LED WW E26 Bulb	Portal 5 Bulb		<input type="radio"/> RGB WW	
772	Portal 5	12	LED WW E26 Bulb	Portal 5 Bulb		<input type="radio"/> RGB WW	
773	Portal 5	13	LED WW E26 Bulb	Portal 5 Bulb		<input type="radio"/> RGB WW	
774	Portal 5	14	LED WW E26 Bulb	Portal 5 Bulb		<input type="radio"/> RGB WW	
775	Portal 5	15	LED WW E26 Bulb	Portal 5 Bulb		<input type="radio"/> RGB WW	
776	Portal 5	16	LED WW E26 Bulb	Portal 5 Bulb		<input type="radio"/> RGB WW	
777	Portal 5	17	LED WW E26 Bulb	Portal 5 Bulb		<input type="radio"/> RGB WW	
778	Portal 5	18	LED WW E26 Bulb	Portal 5 Bulb		<input type="radio"/> RGB WW	
779	Portal 5	19	LED WW E26 Bulb	Portal 5 Bulb		<input type="radio"/> RGB WW	
780	Portal 5	20	LED WW E26 Bulb	Portal 5 Bulb		<input type="radio"/> RGB WW	
781	Portal 5	21	LED WW E26 Bulb	Portal 5 Bulb		<input type="radio"/> RGB WW	
782	Portal 5	22	LED WW E26 Bulb	Portal 5 Bulb		<input type="radio"/> RGB WW	
783	Portal 5	23	LED WW E26 Bulb	Portal 5 Bulb		<input type="radio"/> RGB WW	
784	Portal 5	24	LED WW E26 Bulb	Portal 5 Bulb		<input type="radio"/> RGB WW	
785	Portal 5	25	LED WW E26 Bulb	Portal 5 Bulb		<input type="radio"/> RGB WW	
786	Portal 5	26	LED WW E26 Bulb	Portal 5 Bulb		<input type="radio"/> RGB WW	
787	Portal 5	27	LED WW E26 Bulb	Portal 5 Bulb		<input type="radio"/> RGB WW	
788	Portal 5	28	LED WW E26 Bulb	Portal 5 Bulb		<input type="radio"/> RGB WW	

Chan	Position	U#	Instrument Type & Load	Purpose	Accessory	Color	Gobo
789	Portal 5	29	LED WW E26 Bulb	Portal 5 Bulb		<input type="radio"/> RGB WW	
790	Portal 5	30	LED WW E26 Bulb	Portal 5 Bulb		<input type="radio"/> RGB WW	
791	Portal 5	31	LED WW E26 Bulb	Portal 5 Bulb		<input type="radio"/> RGB WW	
792	Portal 5	32	LED WW E26 Bulb	Portal 5 Bulb		<input type="radio"/> RGB WW	
793	Portal 5	33	LED WW E26 Bulb	Portal 5 Bulb		<input type="radio"/> RGB WW	
794	Portal 5	34	LED WW E26 Bulb	Portal 5 Bulb		<input type="radio"/> RGB WW	
795	Portal 5	35	LED WW E26 Bulb	Portal 5 Bulb		<input type="radio"/> RGB WW	
796	Portal 5	36	LED WW E26 Bulb	Portal 5 Bulb		<input type="radio"/> RGB WW	
797	Portal 5	37	LED WW E26 Bulb	Portal 5 Bulb		<input type="radio"/> RGB WW	
801	12 Electric	11	LED WW E26 Bulb	Statue Bulbs		<input type="radio"/> RGB WW	
802	12 Electric	9	LED WW E26 Bulb	Statue Bulbs		<input type="radio"/> RGB WW	
803	12 Electric	7	LED WW E26 Bulb	Statue Bulbs		<input type="radio"/> RGB WW	
804	12 Electric	5	LED WW E26 Bulb	Statue Bulbs		<input type="radio"/> RGB WW	
805	12 Electric	3	LED WW E26 Bulb	Statue Bulbs		<input type="radio"/> RGB WW	
806	12 Electric	1	LED WW E26 Bulb	Statue Bulbs		<input type="radio"/> RGB WW	
807	13 Electric	12	LED WW E26 Bulb	Statue Bulbs		<input type="radio"/> RGB WW	
808	13 Electric	9	LED WW E26 Bulb	Statue Bulbs		<input type="radio"/> RGB WW	
809	13 Electric	6	LED WW E26 Bulb	Statue Bulbs		<input type="radio"/> RGB WW	
810	13 Electric	3	LED WW E26 Bulb	Statue Bulbs		<input type="radio"/> RGB WW	
811	14 Electric	13	LED WW E26 Bulb	Statue Bulbs		<input type="radio"/> RGB WW	
812	14 Electric	12	LED WW E26 Bulb	Statue Bulbs		<input type="radio"/> RGB WW	
813	14 Electric	9	LED WW E26 Bulb	Statue Bulbs		<input type="radio"/> RGB WW	
814	14 Electric	7	LED WW E26 Bulb	Statue Bulbs		<input type="radio"/> RGB WW	
815	14 Electric	5	LED WW E26 Bulb	Statue Bulbs		<input type="radio"/> RGB WW	
816	14 Electric	3	LED WW E26 Bulb	Statue Bulbs		<input type="radio"/> RGB WW	
817	14 Electric	1	LED WW E26 Bulb	Statue Bulbs		<input type="radio"/> RGB WW	
818	15 Electric	12	LED WW E26 Bulb	Statue Bulbs		<input type="radio"/> RGB WW	
819	15 Electric	9	LED WW E26 Bulb	Statue Bulbs		<input type="radio"/> RGB WW	
820	15 Electric	6	LED WW E26 Bulb	Statue Bulbs		<input type="radio"/> RGB WW	

Chan	Position	U#	Instrument Type & Load	Purpose	Accessory	Color	Gobo
821	15 Electric	3	LED WW E26 Bulb	Statue Bulbs		<input type="radio"/> RGB WW	
822	16 Electric	5	LED WW E26 Bulb	Statue Bulbs		<input type="radio"/> RGB WW	
823	16 Electric	3	LED WW E26 Bulb	Statue Bulbs		<input type="radio"/> RGB WW	
901	TBD	1	MDG ATMe 715w	Haze			
911	House	1	Architecture	House			



KEY

Conventionals

- Source 4 19° @ 575w
- Source 4 26° @ 575w
- Source 4 26° @ 750w
- Source 4 36° @ 575w
- Source 4 ZOOM @ 575w
- PAR 64 MFL @ 1kw
- Par 16 Birdie @ 250w

LED Lustrs

- Source 4 Lustr 19° @ 117w
- Source 4 Lustr 26° @ 117w

Cyc & Zip

- Ianaro 3 Cell @ 1kw
- Altman ZS-3 @ 3X750

SFX

- MDG ATMe @ 715w
- Chandelier
- LED Tape

TYPICAL

- ### NOTES
- ALL UNITS ON 1" CENTERS UNLESS OTHERWISE NOTED ON PLOT
 - BOOM POSITIONS MARKED AS DISTANCE FROM CL
 - ALL BOOM HEIGHTS MEASURED FROM STAGE DECK (0'-0") TO CLAMP POSITION
 - DROP COLOR, TEMPLATES, AND ACCESSORIES PRIOR TO FOCUS
 - PLEASE HAVE SPARE CUTS OF R119 & R124 AT FOCUS
 - ALL CHANGES/SUBSTITUTIONS MUST BE APPROVED BY DESIGNER

TEMPLATES

REVISIONS

DATE	CHANGES	WHO
12/19/22	Preliminary	MAO
12/19/22	Final	MAO

CalARTS

McCart Theatre

The Winter's Tale
William Shakespeare

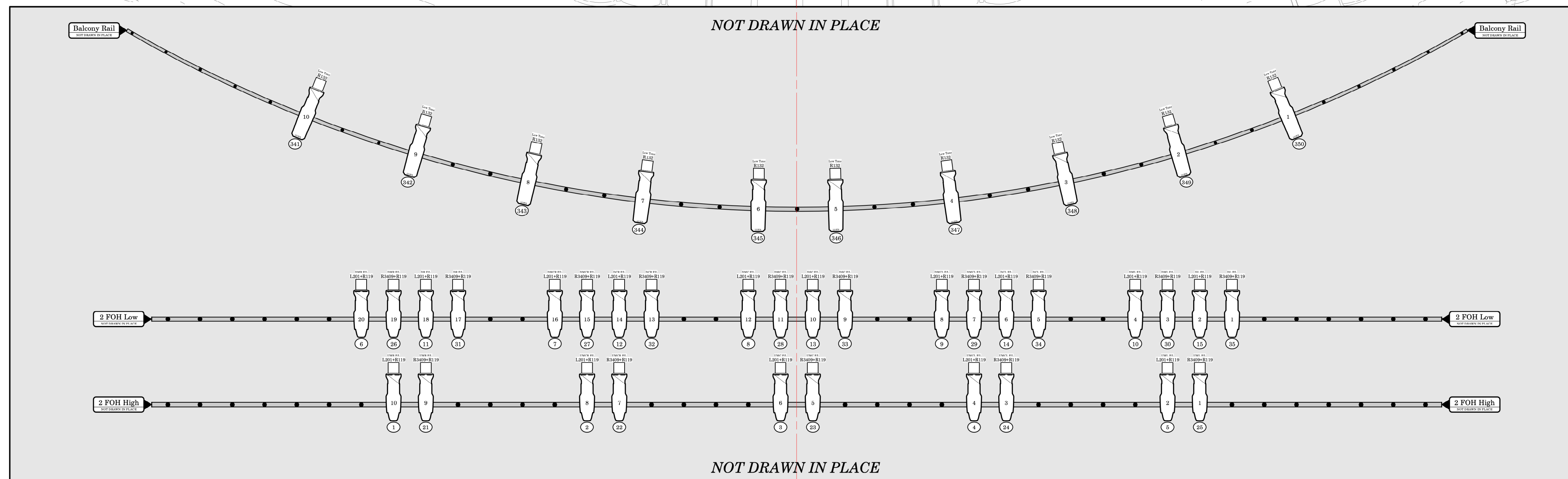
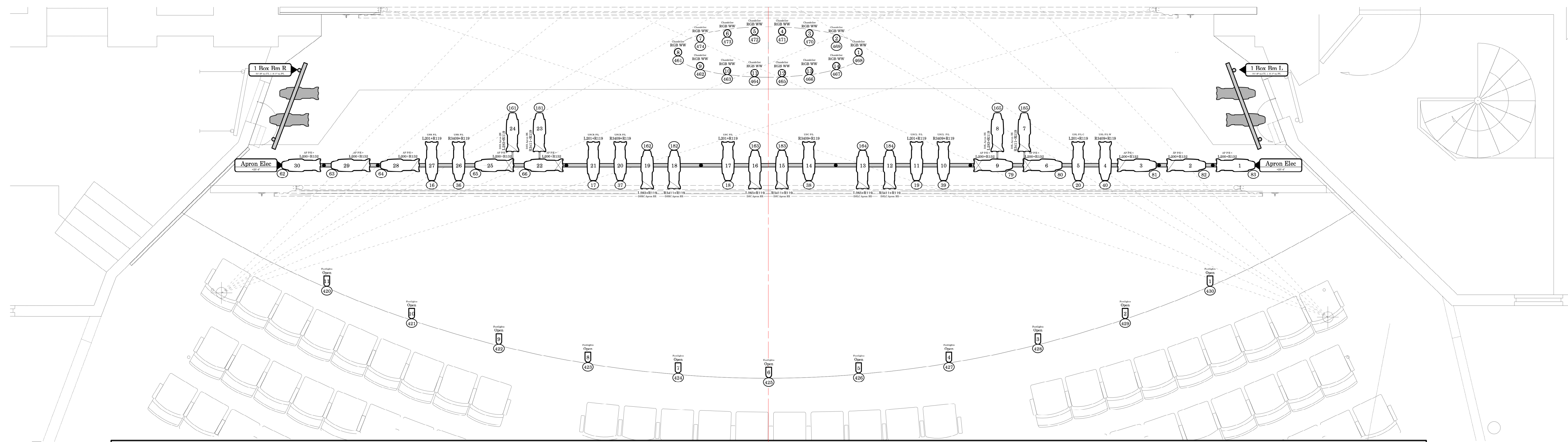
PRODUCER: CalArts
DIRECTOR: Rebecca Talchman
SETS: Christian Jones
COSTUMES: Costumes
SOUND: Sound
LIGHTING: Max Okst
ASST. LD: AID
FE: FE
ME: ME
PROGRAM: Program

MAX OKST
(631) 605-8525 | maxokst@gmail.com
www.maxokst.com

PLATE

Over Stage
3/8" = 1'0" Arch D

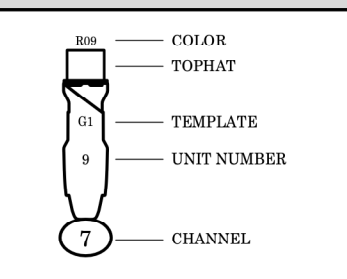
1 OF 6



KEY

- Conventionals**
- Source 4 19° @ 575w
 - Source 4 26° @ 575w
 - Source 4 26° @ 750w
 - Source 4 36° @ 575w
 - Source 4 ZOOM @ 575w
 - PAR 64 MFL @ 1kw
 - Par 16 Birdie @ 250w
- LED Lustrs**
- Source 4 Lustr 19° @ 117w
 - Source 4 Lustr 26° @ 117w
- Cyc & Zip**
- Ianaro 3 Cell @ 1kw
 - Altman ZS-3 @ 3X750
- SFX**
- MDG ATMe @ 715w
 - Chandelier
 - LED Tape

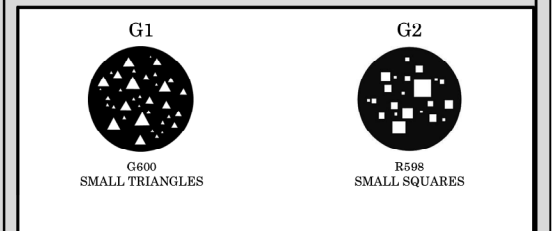
TYPICAL



NOTES

1. ALL UNITS ON 1" CENTERS UNLESS OTHERWISE NOTED ON PLOT
2. BOOM POSITIONS MARKED AS DISTANCE FROM CL
3. ALL BOOM HEIGHTS MEASURED FROM STAGE DECK (0'-0") TO CLAMP POSITION
4. DROP COLOR, TEMPLATES, AND ACCESSORIES PRIOR TO FOCUS
5. PLEASE HAVE SPARE CUTS OF R119 & R124 AT FOCUS
6. ALL CHANGES/SUBSTITUTIONS MUST BE APPROVED BY DESIGNER

TEMPLATES



REVISIONS

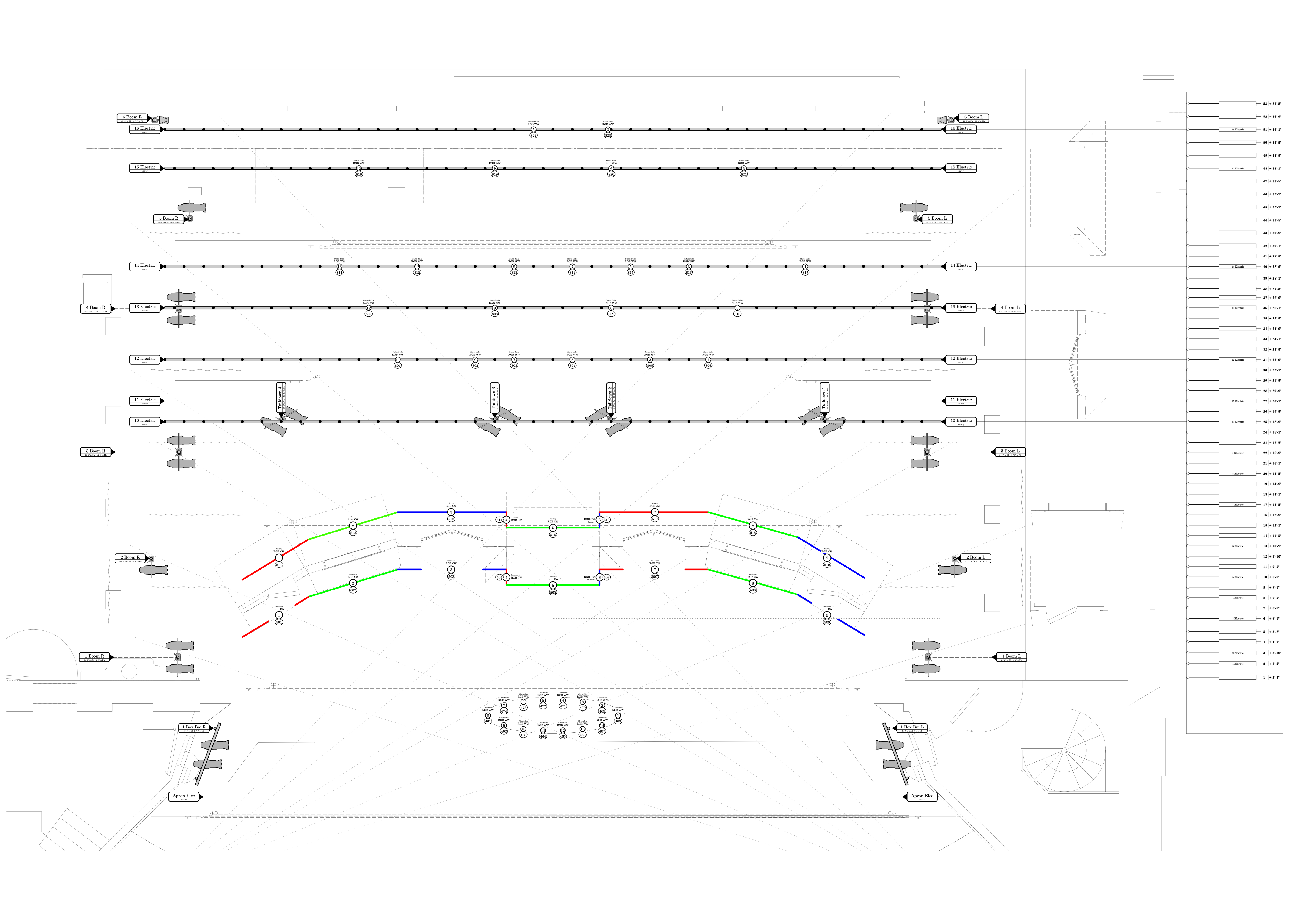
DATE	CHANGES	WHO
12/19/22	Preliminary	MAO
12/19/22	Final	MAO

CalARTS
McCart Theatre

The Winter's Tale
William Shakespeare

PRODUCER: CalArts
DIRECTOR: Rebecca Talchman
SETS: Christian Jones
COSTUMES: Costumes
SOUND: Sound
LIGHTING: Max Okst
ASST. LD: ALD
FE: FE
ME: ME
PROGRAM: Program

MAX OKST PLATE
(631) 605-8525 | maxokst@gmail.com
www.maxokst.com



KEY

Conventionals

- Source 4 19° @ 575w
- Source 4 26° @ 575w
- Source 4 26° @ 750w
- Source 4 36° @ 575w
- Source 4 ZOOM @ 575w
- PAR 64 MFL @ 1kw
- Par 16 Birdie @ 250w

LED Lustrs

- Source 4 Lustr 19° @ 117w
- Source 4 Lustr 26° @ 117w

Cyc & Zip

- Ianaro 3 Cell @ 1kw

SFX

- MDG ATMe @ 715w
- Chandelier
- LED Tape

TYPICAL

- ### NOTES
- ALL UNITS ON 1" CENTERS UNLESS OTHERWISE NOTED ON PLOT
 - BOOM POSITIONS MARKED AS DISTANCE FROM CL
 - ALL BOOM HEIGHTS MEASURED FROM STAGE DECK (0'-0") TO CLAMP POSITION
 - DROP COLOR, TEMPLATES, AND ACCESSORIES PRIOR TO FOCUS
 - PLEASE HAVE SPARE CUTS OF R119 & R124 AT FOCUS
 - ALL CHANGES/SUBSTITUTIONS MUST BE APPROVED BY DESIGNER

TEMPLATES

G1 SMALL TRIANGLES

G2 SMALL SQUARES

REVISIONS

DATE	CHANGES	WHO
12/19/22	Preliminary	MAO
12/19/22	Final	MAO

CalARTS

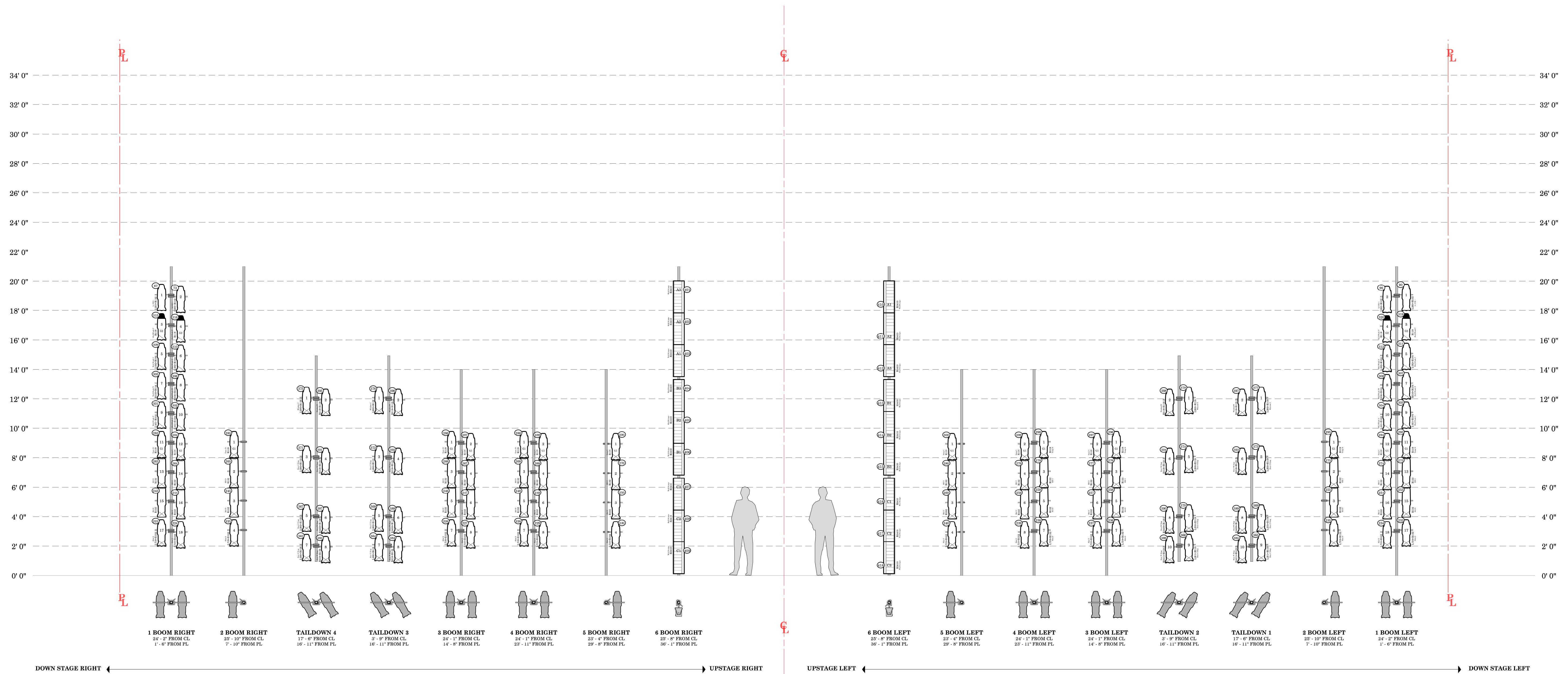
McCart Theatre

The Winter's Tale
William Shakespeare

PRODUCER: CalArts
DIRECTOR: Rebecca Talchman
SETS: Christian Jones
COSTUMES: Costumes
SOUND: Sound
LIGHTING: Max Okst
ASST. LD: AID
FE: FE
ME: ME
PROGRAM: Program

MAX OKST
PLATE
Deck | Pratics
3/8" = 1'0" Arch D

3 OF 6



KEY

Conventionals

- Source 4 19° @ 575w
- Source 4 26° @ 575w
- Source 4 26° @ 750w
- Source 4 36° @ 575w
- Source 4 ZOOM @ 575w
- PAR 64 MFL @ 1kw
- Par 16 Birdie @ 250w

LED Lustrs

- Source 4 Lustr 19° @ 117w
- Source 4 Lustr 26° @ 117w

Cyc & Zip

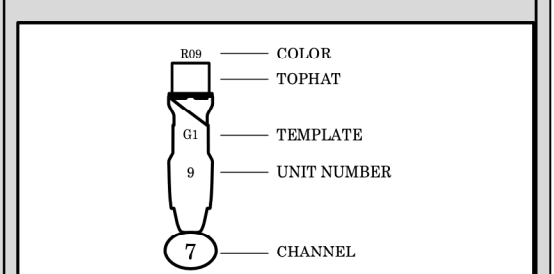
- Ianaro 3 Cell @ 1kw

- Altman ZS-3 @ 3X750

SFX

- MDG ATMe @ 715w
- Chandelier
- LED Tape

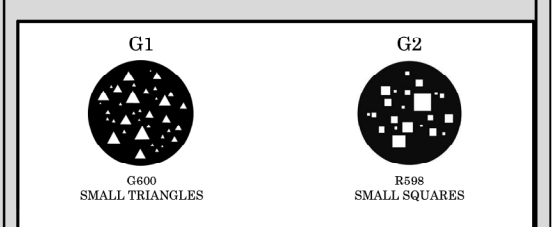
TYPICAL



NOTES

1. ALL UNITS ON 1" CENTERS UNLESS OTHERWISE NOTED ON PLOT
2. BOOM POSITIONS MARKED AS DISTANCE FROM CL
3. ALL BOOM HEIGHTS MEASURED FROM STAGE DECK (0'-0") TO CLAMP POSITION
4. DROP COLOR, TEMPLATES, AND ACCESSORIES PRIOR TO FOCUS
5. PLEASE HAVE SPARE CUTS OF R119 & R124 AT FOCUS
6. ALL CHANGES/SUBSTITUTIONS MUST BE APPROVED BY DESIGNER

TEMPLATES



REVISIONS

DATE	CHANGES	WHO
12/19/22	Preliminary	MAO
12/19/22	Final	MAO

CalARTS

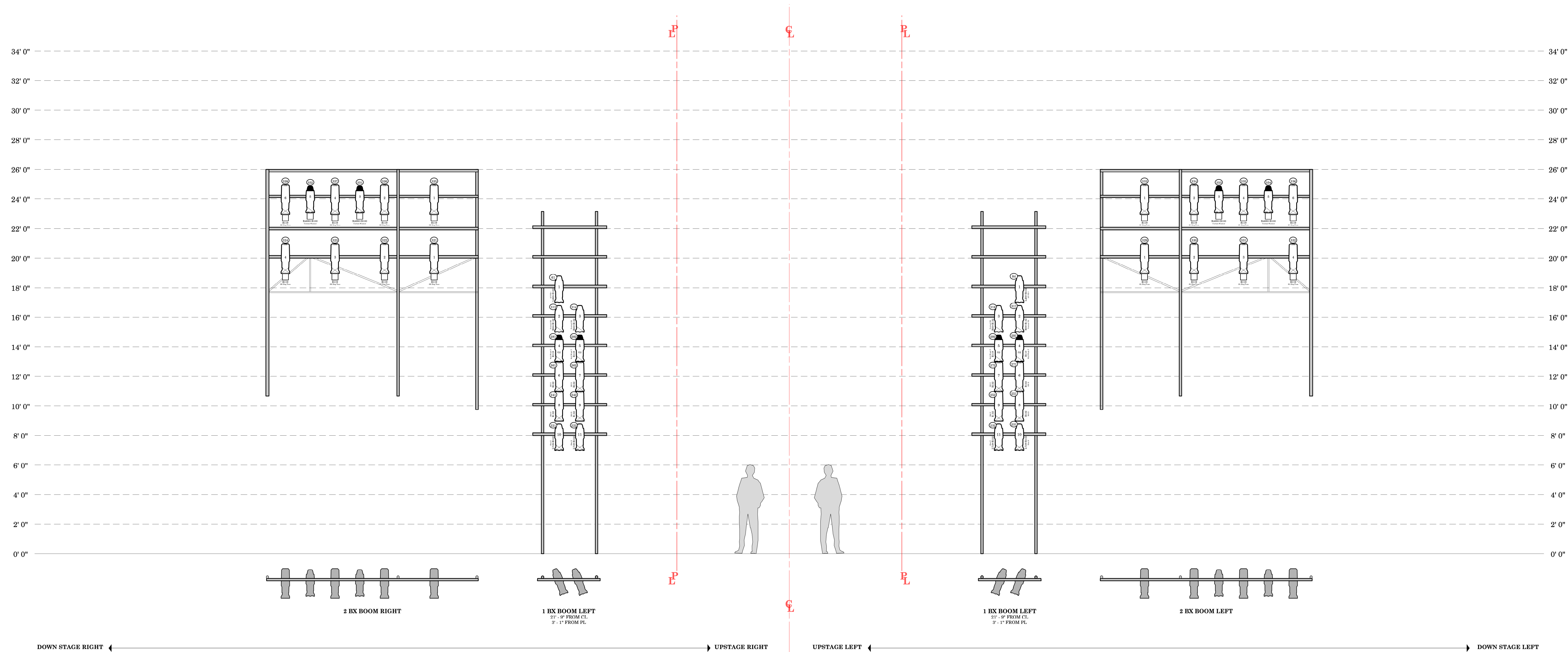
McCarter Theatre

The Winter's Tale
 William Shakespeare
 PRODUCER: CalArts
 DIRECTOR: Rebecca Talchman
 SETS: Christian Jones
 COSTUMES: Costumes
 SOUND: Sound
 LIGHTING: Max Okst
 ASST. LD: ALD
 FE: FE
 ME: ME
 PROGRAM: Program

MAX OKST PLATE
 (631) 605-8525 | maxokst@gmail.com
 www.maxokst.com

Boom Detail
 3/8" = 1'0" Arch D

4 OF 6



KEY

- Conventionals**
- Source 4 19° @ 575w
 - Source 4 26° @ 575w
 - Source 4 26° @ 750w
 - Source 4 36° @ 575w
 - Source 4 ZOOM @ 575w
 - PAR 64 MFL @ 1kw
 - Par 16 Birdie @ 250w

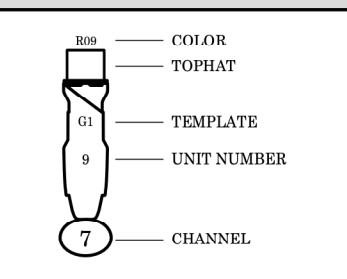
- LED Lustrs**
- Source 4 Lustr 19° @ 117w
 - Source 4 Lustr 26° @ 117w

- Cyc & Zip**
- Ianaro 3 Cell @ 1kw

- Altman ZS-3 @ 3X750

- SFX**
- MDG ATMe @ 715w
 - Chandelier
 - LED Tape

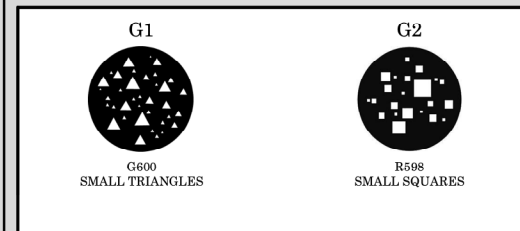
TYPICAL



NOTES

1. ALL UNITS ON 1" CENTERS UNLESS OTHERWISE NOTED ON PLOT
2. BOOM POSITIONS MARKED AS DISTANCE FROM CL
3. ALL BOOM HEIGHTS MEASURED FROM STAGE DECK (0'-0") TO CLAMP POSITION
4. DROP COLOR, TEMPLATES, AND ACCESSORIES PRIOR TO FOCUS
5. PLEASE HAVE SPARE CUTS OF R119 & R132 AT FOCUS
6. ALL CHANGES/SUBSTITUTIONS MUST BE APPROVED BY DESIGNER

TEMPLATES



REVISIONS

DATE	CHANGES	WHO
12/19/22	Preliminary	MAO
12/19/22	Final	MAO

CalARTS
McCarter Theatre

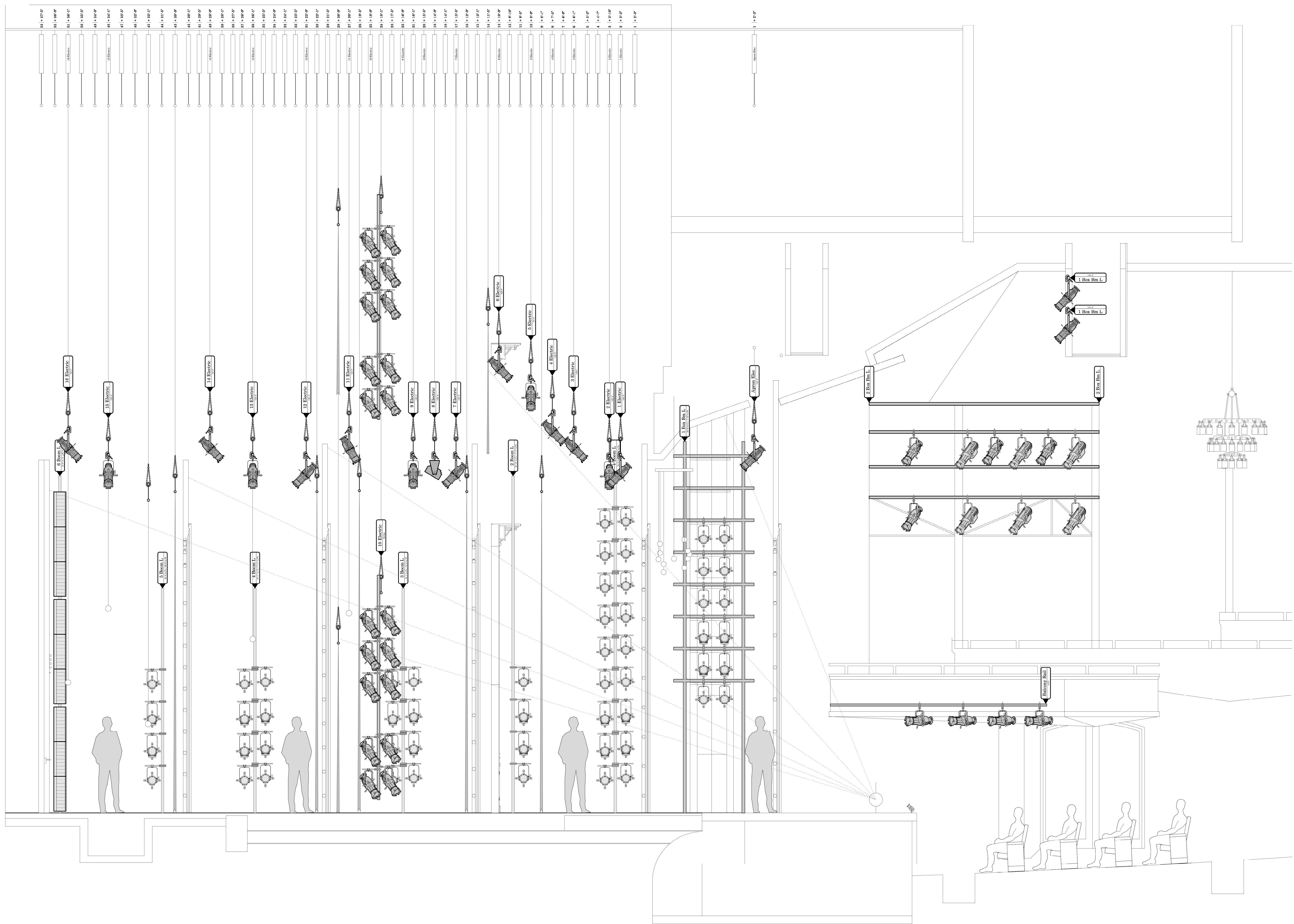
The Winter's Tale
William Shakespeare

PRODUCER: CalArts
DIRECTOR: Rebecca Talchman
SETS: Christian Jones
COSTUMES: Costance
SOUND: Sound
LIGHTING: Max Okst
ASST. LD: ALD
FE: FE
ME: ME
PROGRAM: Program

MAX OKST PLATE
(631) 605-8525 | maxokst@gmail.com
www.maxokst.com

FOH Boom
3/8" = 1'0" Arch D

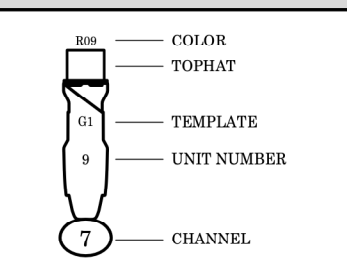
5
OF 6



KEY

- Conventionals**
- Source 4 19° @ 575w
 - Source 4 26° @ 575w
 - Source 4 26° @ 750w
 - Source 4 36° @ 575w
 - Source 4 ZOOM @ 575w
 - PAR 64 MFL @ 1kw
 - Par 16 Birdie @ 250w
- LED Lustrs**
- Source 4 Lustr 19° @ 117w
 - Source 4 Lustr 26° @ 117w
- Cyc & Zip**
- Ianaro 3 Cell @ 1kw
- Altman ZS-3 @ 3X750
- SFX**
- MDG ATMe @ 715w
 - Chandelier
 - LED Tape

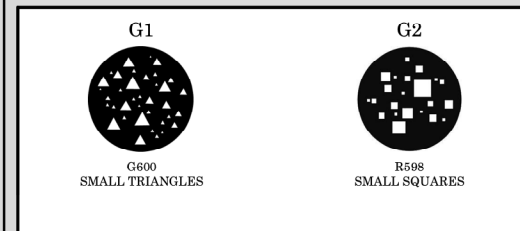
TYPICAL



NOTES

1. ALL UNITS ON 1" CENTERS UNLESS OTHERWISE NOTED ON PLOT
2. BOOM POSITIONS MARKED AS DISTANCE FROM CL
3. ALL BOOM HEIGHTS MEASURED FROM STAGE DECK (0'-0") TO CLAMP POSITION
4. DROP COLOR, TEMPLATES, AND ACCESSORIES PRIOR TO FOCUS
5. PLEASE HAVE SPARE CUTS OF R119 & R124 AT FOCUS
6. ALL CHANGES/SUBSTITUTIONS MUST BE APPROVED BY DESIGNER

TEMPLATES



REVISIONS

DATE	CHANGES	WHO
12/19/22	Preliminary	MAO
12/19/22	Final	MAO

CaLARTS
McCart Theatre

The Winter's Tale
William Shakespeare

PRODUCER: CalArts
DIRECTOR: Rebecca Talchman
SETS: Christian Jones
COSTUMES: Costumes
SOUND: Sound
LIGHTING: Max Okst
ASST. LD: ALD
FE: FE
ME: ME
PROGRAM: Program

MAX OKST
(631) 605-8525 | maxokst@gmail.com
www.maxokst.com

Section
3/8" = 1'0" Arch D