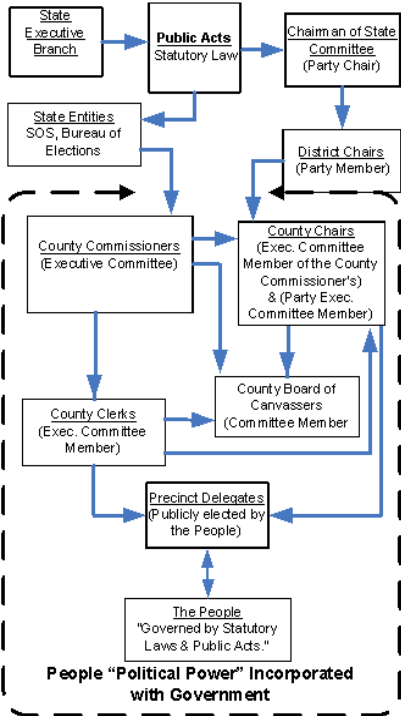


Michigan County Political Structure

Body Corporate w/ Current Democracy

All Political Power is in the Corporate **"Municipality"**

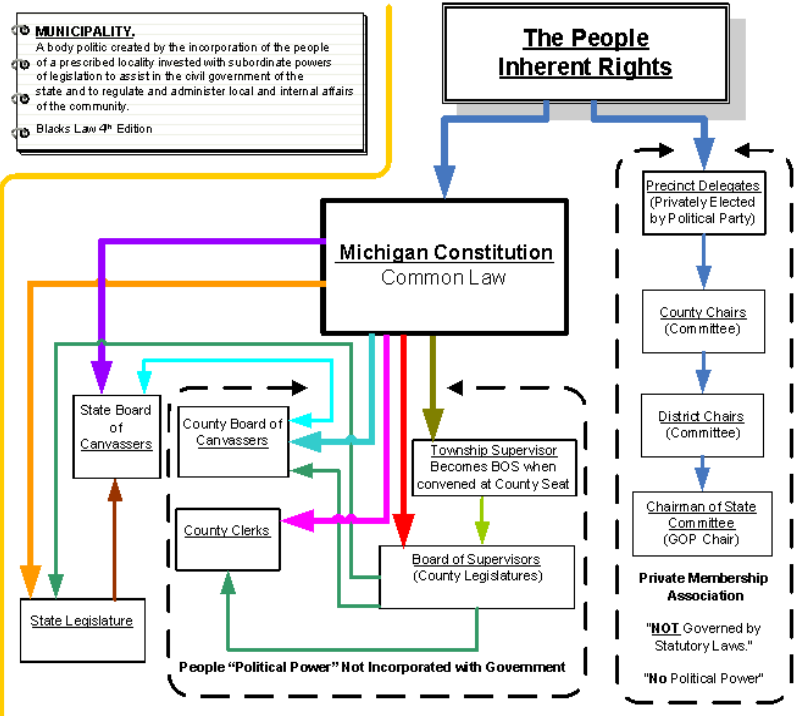


Michigan State Constitution
Article 1 Section 1
Political Power

"All political power is inherent in the people. Government is instituted for their equal benefit, security and protection."

Body Corporate w/ Constitutional Republican Form

All Political Power is in the People **"Fundamental"**



Michigan State Constitution
Article 7 Section 1

Counties: Corporate Character, Powers and Immunities

"Each organized county shall be a body corporate with powers and immunities provided by law."

Questions? Email us at: admin@wethepeoplenotices.org