

AC/AD



Examination-Diagnostic, Preparation  
Examen-Diagnóstico, preparación

## Examination - Diagnostic - Examen - Diagnóstico

### Head Mirrors and Head Bands

### Espejos reflectores y cintas frontales



ZIEGLER

**AC402**

Head mirror only, with rubber coating

Espejo reflector, solo, con recubrimiento de goma



ZIEGLER

**OF090**

Head mirror only, with metal coating

Espejo reflector, solo, con recubrimiento de metal



ZIEGLER

**AC413**

Head band of plastic, black, only

Cinta frontal de plástico negro, sola

**AC414**

Head band of plastic, white, only

Cinta frontal de plástico blanco, sola



MURPHY

**AC415**

Head band of celluloid, white, only

Cinta frontal de celuloide blanco, sola



**AC416**

Head band of plastic, white, only, soft pattern

Cinta frontal de plástico blanco, sola, modelo blando



**AC421**

Head mirror (AC402) with black plastic head band (AC413)

Espejo frontal (AC 402) con cinta de plástico negro (AC 413)

AC





## Examination - Diagnostic - Examen - Diagnóstico

Head Lights  
Lámparas frontales

AC



**AC440**

220 volts  
Transformater  
Transformador  
de 220 voltios



CLAR 55

**AC461**

Head light, 6 volt, with adjustable joint, white celluloid head band, with foam rubber pad and cord with plugs for transformer AC440

Lámpara frontal, de 6 voltios, con articulación ajustable, cinta blanca de celuloide con almohadilla de goma esponjosa y cable con clavija para el transformador AC440

**AC462**

Mirror, only, for head light AC461

Espejo, solo, para lámpara frontal AC461



**AC463**

Spare bulb

Bombilla de repuesto



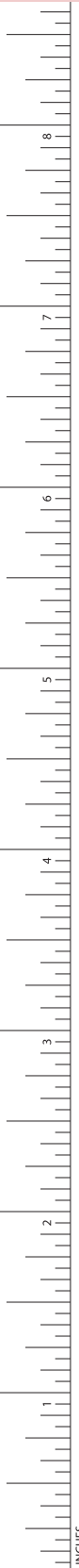
MILLIMETERS

# Examination - Diagnostic - Examen - Diagnóstico

Tongue Depressors

Espátulas baja-lenguas

AC



**OM202R**

145 mm, 5 3/4"



**OM203R**

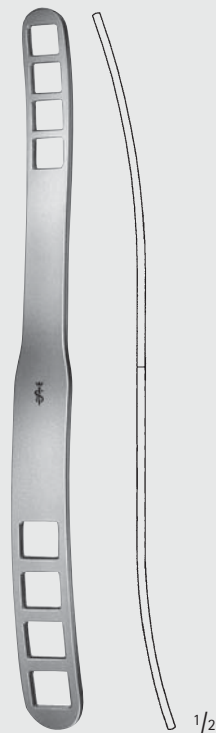
140 mm, 5 1/2"



**BUCHWALD**

**OM205R**

180 mm, 7"



**BRÜNING'S**

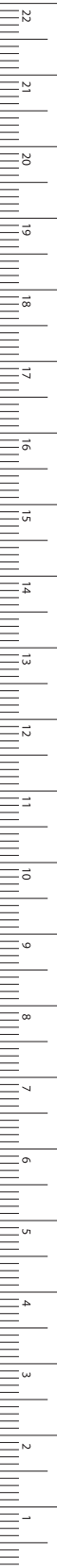
**OM208R**

190 mm, 7 1/2"



Examination - Diagnostic - Examen - Diagnóstico  
Laryngeal Mirrors  
Espejos laríngeos

AC



MILLIMETERS



**OM078R/  
AC468R**

Fig. 000  
diam. 6 mm  
Ø 6 mm



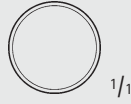
**OM079R/  
AC469R**

Fig. 00  
diam. 8 mm  
Ø 8 mm



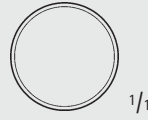
**OM080R/  
AC470R**

Fig. 0  
diam. 10 mm  
Ø 10 mm



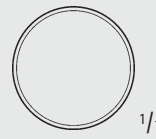
**OM081R/  
AC471R**

Fig. 1  
diam. 12 mm  
Ø 12 mm



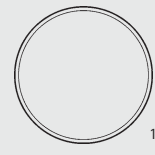
**OM082R/  
AC472R**

Fig. 2  
diam. 14 mm  
Ø 14 mm



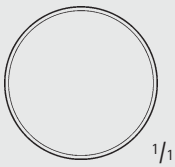
**OM083R/  
AC473R**

Fig. 3  
diam. 16 mm  
Ø 16 mm



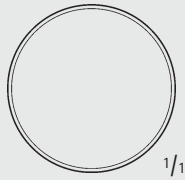
**OM084R/  
AC474R**

Fig. 4  
diam. 18 mm  
Ø 18 mm



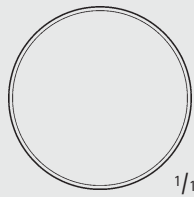
**OM085R/  
AC475R**

Fig. 5  
diam. 20 mm  
Ø 20 mm



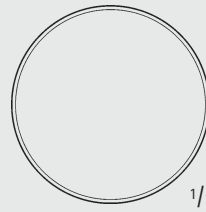
**OM086R/  
AC476R**

Fig. 6  
diam. 22 mm  
Ø 22 mm



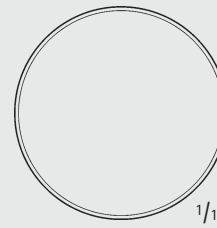
**OM087R/  
AC477R**

Fig. 7  
diam. 24 mm  
Ø 24 mm



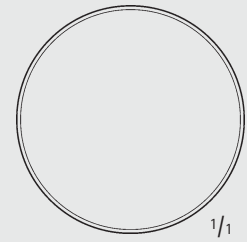
**OM088R/  
AC478R**

Fig. 8  
diam. 26 mm  
Ø 26 mm



**OM089R/  
AC479R**

Fig. 9  
diam. 28 mm  
Ø 28 mm



**OM090R/  
AC480R**

Fig. 10  
diam. 30 mm  
Ø 30 mm



**OM078R-  
OM090R**

Laryngeal mirrors  
with hexagonal handle  
Espejos laríngeos con  
mango hexagonal  
180 mm,  
7"



**AC468R-  
AC480R**

Laryngeal  
mirrors  
Espejos  
laríngeos  
120 mm,  
4 3/4"



**AC481R**

Mirror handle  
Mango para  
espejo  
110 mm,  
4 3/8"



**AC483C**

Mirror handle  
Mango para  
espejo  
105 mm,  
4 1/8"

# Examination - Diagnostic - Examen - Diagnóstico

Tuning Forks

Diapasones

AC



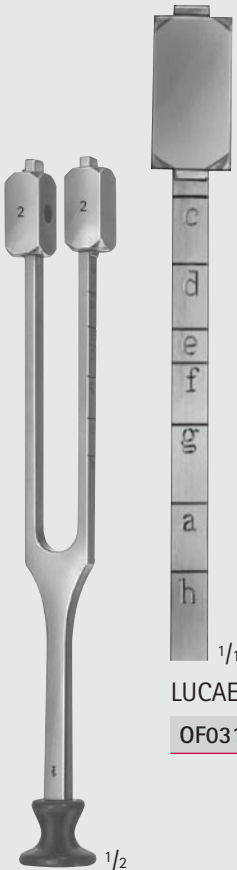
HARTMANN

- OF001N = c 128
- OF002N = c 128
- OF003N = c 128
- OF004N = c 128
- OF005N = c 128
- OF006N = c 128



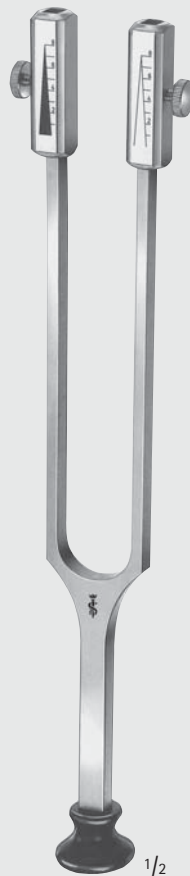
OF010N = a<sup>1</sup> 440

Tuning forks for neurologists  
Diapasones para neurólogos



LUCAE

OF031N = c 128



RYDEL-SEIFFER

OF033N

with clamps = c 64  
without clamps = c 128  
con amortiguador = c 64  
sin amortiguador = c 128





## Examination - Diagnostic - Examen - Diagnóstico

### Instruments for Measuring Instrumentos de medición



#### AA804R-AA806R

Steel ruler, stainless, graduated in millimeters and inches

Regla métrica de acero inoxidable, graduada en milímetros y pulgadas

AA804R	AA805R	AA806R
150 mm	300 mm	500 mm
6"	12"	20"

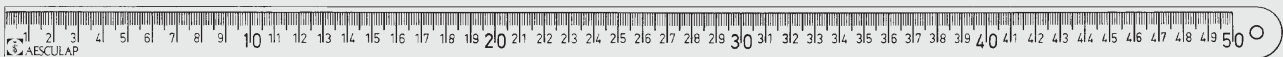
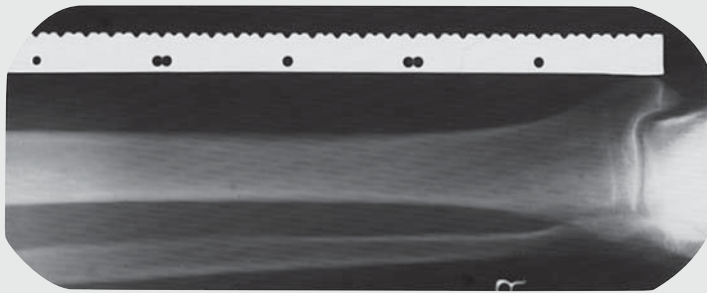


#### AA808R

Ruler for X-ray work in fracture treatment. Direct reading. Graduation from half to half cm by distinct notches at the rim. Full cms are accentuated by deeper notches. Markings of 5 cm and decimeter distance by one and two holes respectively.

Regla métrica de radiografías para los tratamientos de fractura. Con lectura directa de las medidas. Graduación en 1/2 cm por muescas bien visibles a lo largo del borde; los centímetros se diferencian de los medicentímetros por muescas profundas. Para facilitar la lectura, las distancias de 5 y 10 cm están marcadas por agujeros.

500 mm, 20"



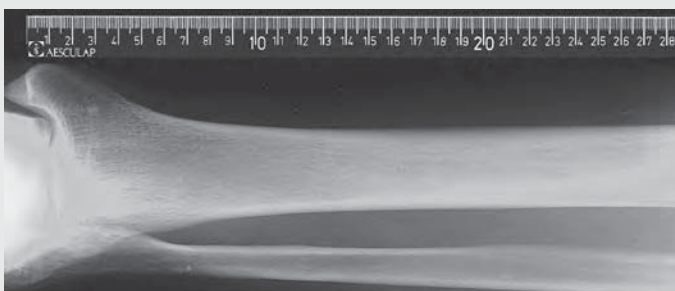
#### AA809

Plastic ruler, flexible, for X-ray work.

Can be sterilized in an autoclave at 143°C (3 bar). Figures and mm-graduation transparent to X-ray.

Regla métrica de radiografías de plástico, flexible, esterilizable en un autoclave a 143°C (3 bar) Números y graduación visibles en las radiografías

500 mm, 20"



#### AA821C-AA822C

Steel tape measure, graduated in millimeters and inches  
Cinta métrica de acero, graduada en milímetros y pulgadas

#### AA826

Tape measure of oilcloth, graduated in millimeters and inches  
Cinta métrica de tela barnizada, graduada en milímetros y pulgadas

**Note:**

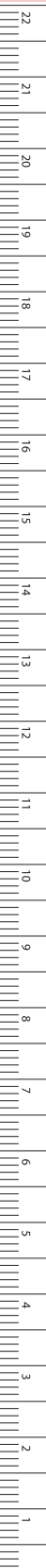
Not suitable for steam sterilization

**Nota:**

No adecuado para la esterilización a vapor.

AA821C	AA822C	AA826
1,5 m	2,0 m	1,5 m
60"	80"	60"

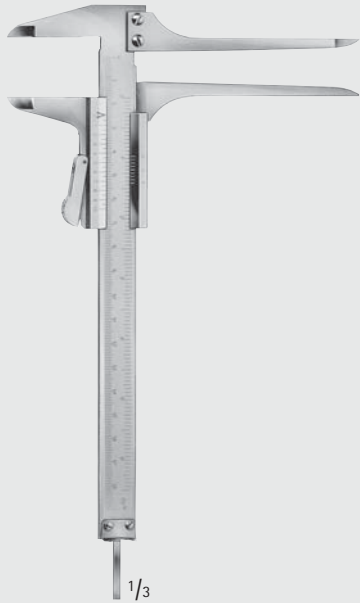
AD



MILIMETERS

## Examination - Diagnostic - Examen - Diagnóstico

Instruments for Measuring  
Instrumentos de medición



**AA845R**

Special caliper for neurosurgery  
measuring range up to 150 mm

Calibrador, especialmente para neurocirugía  
mensurable hasta 150 mm

125 mm, 5"



**AA846R**

Caliper,  
measuring range up to 150 mm

Calibrador,  
mensurable hasta 150 mm

230 mm, 9"



**AA847R**

Caliper,  
measuring range up to 100 mm

Calibrador,  
mensurable hasta 100 mm

130 mm, 5 1/8"



**AD110R**

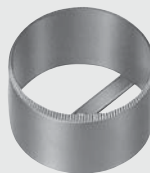
Finger goniometer

Goniómetro para dedos



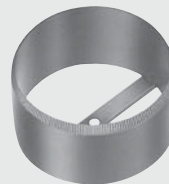
**AD123R**

diam.  
33 mm  
Ø 33 mm



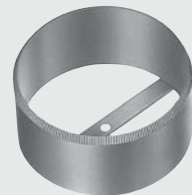
**AD125R**

diam.  
38 mm  
Ø 38 mm



**AD127R**

diam.  
42 mm  
Ø 42 mm



**AD129R**

diam.  
48 mm  
Ø 48 mm

**AD123R-AD129R**

Mamilla marker, toothed

Marcadores de mamila, dentado

AD







## Examination - Diagnostic - Examen - Diagnóstico

Preparation

Preparación

AN



**BA244R**

Razor for interchangeable blades,  
with safety clip

Navaja para hojas de afeitar, hojas inter-  
cambiables con dispositivo de seguridad



**BA245R**

Spare blades

Sales unit: PAK = Package of 10 pieces

Hojas de repuesto

Unidad de pedido: PAK = paquete de 10 unidades

70 mm, 2 3/4"

## Elektra® II



**GH201-GH204**

Maintenance for the Aesculap Elektra® II is no problem  
at all. The permanently lubricated motor does not need any  
maintenance - only the cutterheads require periodic oiling.  
The clipper is double insulated.

Electric hair clippers  
(without cutterheads)

El mantenimiento de la Aesculap Elektra® II no es  
problemático. El motor con lubricación permanente no requiere  
mantenimiento, solamente hay que lubricar con frecuencia las  
cabezas de corte. La máquina tiene doble aislamiento.

Maquinillas eléctricas para cortar el pelo  
(sin cabezas de corte)

**GH201**

110-125 volt

110-125 Volt


**GH204**

220 volt

220 Volt

Registrations:

Registros:

 conforming to directive 89/336/EEC and 73/23/EEC  
conforme a la directiva 89/336/CEE y 73/23/CEE



**GH700-GT784**

Interchangeable cutterheads

Cabezas de corte intercambiables

Height of clip

Altura del corte

GH700	1/20 mm		
GH703	1/10 mm		
GT730	1/2 mm		
GH712	1 mm		
GT736	1 mm	wide tooth	dentadura extendida
GT746	1.5 mm		
GT710	1.8 mm	fine tooth	dentadura fina
GH715	2 mm	short teeth	dientes cortos
GT742	2 mm	long teeth	dientes largos
GT754	3 mm	short teeth	dientes cortos
GT748	3 mm	long teeth	dientes largos
GT758	5 mm		
GT770	7 mm		
GT779	9 mm		
GT782	12 mm		
GT784	16 mm		

Note:

Cutterhead system - to be used interchangeably for  
Elektra II as well as for Elektra I clipper.

Nota:

Estos cabezas de corte también se pueden  
utilizar con las máquinas tipo Elektra I.

MILLIMETERS

# Examination - Diagnostic - Examen - Diagnóstico

Preparation

Preparación

Further dressing forceps see section BF

Más pinzas porta-esponjas véase sección BF



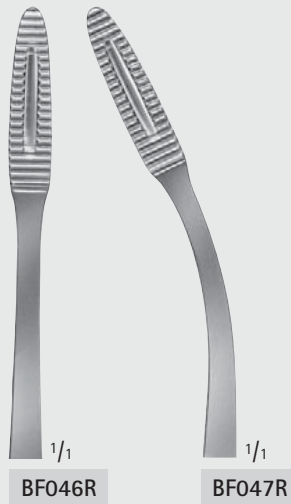
GROSS

**BF046R-BF047R**

Dressing forceps

Pinzas porta-esponjas

200 mm, 8"



AESCULAP

**BF060R-BF061R**

Dressing forceps

Pinzas porta-esponjas

220 mm, 8 3/4"

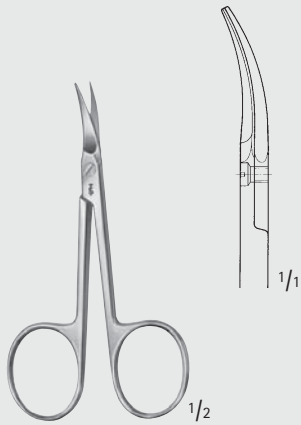
AN



# Examination - Diagnostic - Examen - Diagnóstico

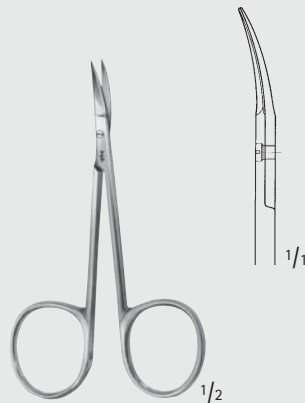
Preparation  
Preparación

AN



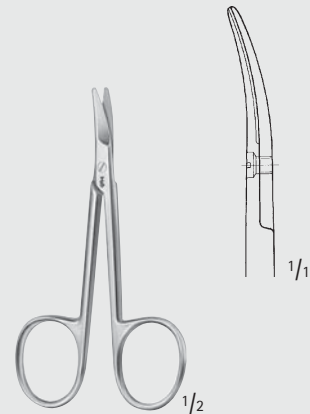
**HF400R**

Nail scissors  
Tijera para uñas  
90 mm, 3 1/2"



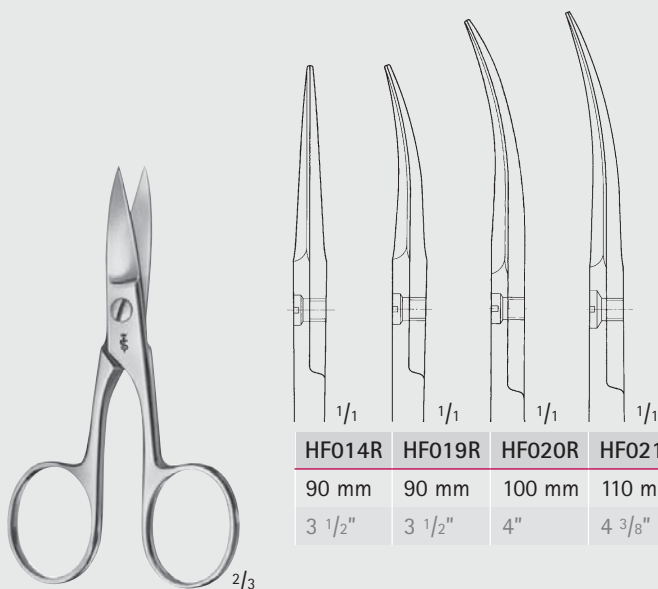
**HF409R**

Nail scissors,  
especially delicate pattern  
Tijera para uñas,  
modelo especialmente fino  
90 mm, 3 1/2"



**HF032R**

Baby nail scissors  
Tijera para uñas, para bebé  
85 mm, 3 1/8"



**HF014R-HF021R**

Nail scissors  
Tijeras para uñas

HF014R	HF019R	HF020R	HF021R
90 mm	90 mm	100 mm	110 mm
3 1/2"	3 1/2"	4"	4 3/8"



**HF028R-HF031R**

Nail scissors  
Tijeras para uñas

HF028R	HF030R	HF031R
95 mm	95 mm	105 mm
3 3/4"	3 3/4"	4 1/8"



MILLIMETERS

Examination - Diagnostic - Examen - Diagnóstico

Preparation

Preparación

AN



**BC056R-BC057R**  
90 mm, 3 1/2"



**HF213R**  
Nail cutter  
Cortauñas  
135 mm, 5 1/4"



**HF234R**  
Nail cutter  
Cortauñas  
145 mm, 5 3/4"



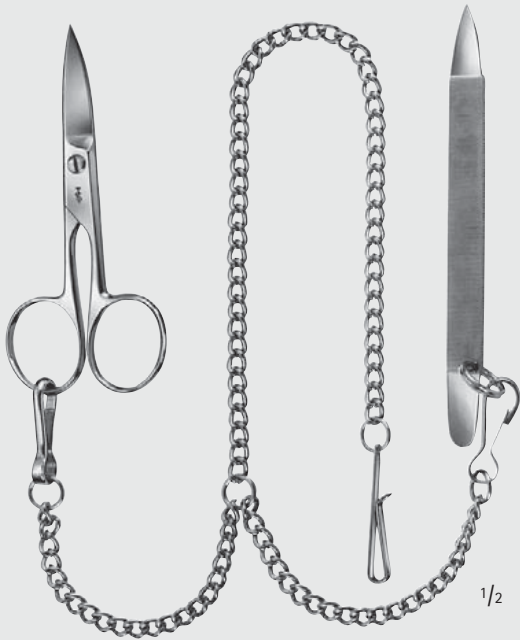
**HF250R**  
Nail cutter  
Cortauñas  
155 mm, 6"



## Examination - Diagnostic - Examen - Diagnóstico

Preparation  
Preparación

AN



**HF520R**

Nail scissors HF020R and nail file HF514R with 50 cm (19 1/2"), chromium plated-chain HF519C  
Tijera para uñas HF020R y lima HF514R, con cadena cromada de 50 cm HF519C.



**HF514R**

Nail file  
Lima de uñas  
100 mm, 4"



**HF566R**

Nail file  
Lima de uñas  
150 mm, 6"



MILLIMETERS

## Examination - Diagnostic - Examen - Diagnóstico

### Instruments for Anesthesia

### Instrumentos para anestesia

Tongue depressors see section AC

Espátulas baja-lenguas vease sección AC



1/2

**OM010**

Mouth gag wooden  
Abrebocas de madera  
140 mm, 5 1/2"



1/1

SCHMID

**OM015R**

Mouth gag, infinitely adjustable  
by thread, with 1 moveable part  
Abrebocas ajustable por rosca sin  
escalonamiento con una parte móvil



1/2

HEISTER

**OM030R**

Mouth gag  
Abrebocas  
130 mm, 5 1/8"



1/2

FERGUSSON-ACKLAND

**OM044R**

Mouth gag  
Abrebocas  
145 mm, 5 3/4"



# Examination - Diagnostic - Examen - Diagnóstico

Instruments for Anaesthesia

Instrumentos para anestesia

AN



1/2

**OM047R**

Mouth gag  
Abrebocas  
125 mm, 5"

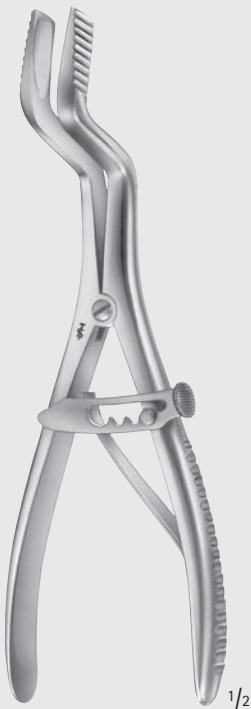


1/2

**ROSER-KÖNIG**

**OM048R**

Mouth gag  
Abrebocas  
160 mm, 6 1/4"



1/2

**ROSER-KÖNIG**

**OM049R**

Mouth gag  
Abrebocas  
185 mm, 7 1/4"



1/2

**MAGILL**

**AN379R-AN381R**

Catheter introducing forceps  
Pinzas para introducir catéteres



**AN379R**

for infants  
para niños  
pequeños

150 mm

6"



**AN380R**

for children  
para niños

200 mm

8"



1/1

**AN381R**

for adults  
para adultos

250 mm

10"



MILLIMETERS

**Examination - Diagnostic - Examen - Diagnóstico**

**Tongue Forceps**

**Pinzas saca-lenguas**

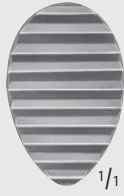
**AN**



**YOUNG**

**AN705R**

165 mm, 6 1/2"



**AN706**

1 pair of rubber pads for AN705R  
1 par de gomas de repuesto para AN705R



**COLLIN**

**AN709R-BH906R**



**AN709R**

170 mm

6 3/4"



**BH906R**

160 mm

6 1/4"



**HEYWOOD-SMITH**

**AN710R**

200 mm, 8"



1/1



**HEYWOOD-SMITH MODIF.**

**AN711R**

215 mm, 8 1/2"



1/1





# Examination - Diagnostic - Examen - Diagnóstico

Preparation  
Preparación

AN



PEAN

**BH410R**

Tubing clamp forceps  
Pinza para clampar tubos  
125 mm, 5"



KLINIKUM BERLIN

**AN908R**

Tubing clamp  
heavy pattern, long ratchet,  
therefore passage adjustable  
Pinza para clampar tubos  
modelo fuerte, cremallera  
con varios dientes de bloqueo, por eso paso regulable  
145 mm, 5 3/4"



**AN909R**

Tubing clamp forceps  
especially heavy pattern  
Pinza para clampar tubos,  
modelo muy fuerte  
165 mm, 6 1/2"



**AN910R**

Tubing clamp forceps  
especially heavy pattern  
Pinza para clampar tubos,  
modelo muy fuerte  
165 mm, 6 1/2"



MILLIMETERS

**Examination - Diagnostic - Examen - Diagnóstico**

Preparation

Preparación

**AN**



1/1

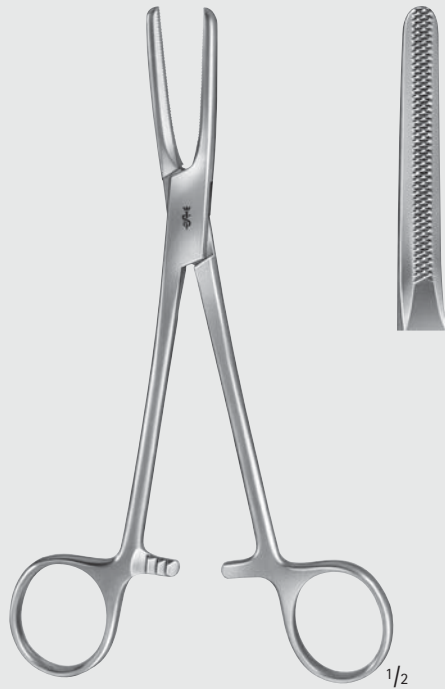
1/2

**AN911R**

Tubing clamp

Pinza para clampar tubos

180 mm, 7"



1/1

1/2

**AN912R**

Tubing clamp

Pinza para clampar tubos

180 mm, 7"



1/1

heavy wedge jaw  
boca muy estriada

1/2

**AN913R**

Tubing clamp

Pinza para clampar tubos

200 mm, 8"



1/1

MD452R	MD453R	MD454R
155 mm	185 mm	200 mm
6"	7 1/4"	8"

**MD452R-MD454R**

Tubing clamps

Pinza para clampar tubos

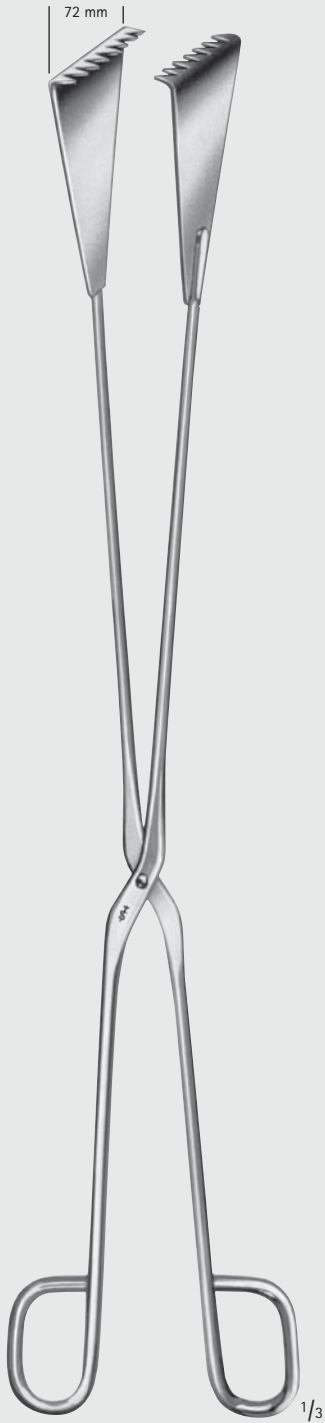




# Examination - Diagnostic - Examen - Diagnóstico

Preparation  
Preparación

AN



SAUERBRUCH

JG850R

Operating Room  
Pick-up forceps for used  
tampons and dressings  
Pinza para agarrar  
apósitos usados y torundas  
550 mm, 22"

